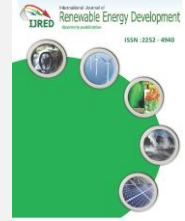




Contents list available at IJRED website

**Int. Journal of Renewable Energy Development (IJRED)**

Journal homepage: [www.ijred.com](http://www.ijred.com)



## Passive Design of Buildings for Extreme Weather Environment

S.N. Al-Zubaidy, S. Tokbolat\*, and R. Tokpatayeva

*Nazarbayev University, School of Engineering, 53, Kabanbay Batyr Ave., Astana, 010000, KAZAKHSTAN*

### Article history:

Received Dec 5, 2012  
Received in revised form Dec 18, 2012  
Accepted Jan 25, 2013  
Available online

**ABSTRACT:** Buildings account for nearly 40% of the end-use energy consumption and carbon emissions globally. Buildings, once built, are used at least for several decades. The building sector therefore holds a significant responsibility for implementing strategies to increase energy efficiency and reduce carbon emissions and thus contribute to global efforts directed toward mitigating the adverse effects of climate change. The work presented in this paper is a part of continuing efforts to identify, analyze and promote the design of low energy, sustainable buildings with special reference to the Kazakhstan locality. Demonstration of improved environmental conditions and impact on energy savings will be outlined through a case study incorporating a passive design approach and detailed computational fluid dynamics analysis for an existing building complex. The influence of orientation and configuration is discussed with reference to energy efficiency and associated wind comfort and safety. The effect of these aspects on energy consumption and comfortable wind environment has been assessed using CFD analysis and proved to be affective. Single building and multiple building configurations have been analyzed and compared. According to the findings, multiple building configurations have better wind conditions when compared with a single standing building. With respect to orientation the former one should be modeled with the fully surrounded side of a “box” opposite to the predominant wind direction whereas the latter one should be located with the rear side opposite to the wind direction. Thus, results indicated that there is a considerable influence of passive design and orientation on energy efficiency, wind comfort and safety. Careful consideration and application of the findings can potentially lead to considerable decrease of energy consumption and, therefore, allow saving money and the environment at the same time.

**Keywords:** building orientation, CFD, extreme weather conditions, low energy design, passive design, wind comfort and safety

### 1. Introduction

The construction sector is one of the major contributors to the processes of climate change (Beatti 2012). Although the built environment represents a considerable part of a country's assets, the construction sector is also one of the main consumers of natural resources with arguably the dominant environmental influence (Holm 2003). It contributes to water and air pollution, produces various types of waste and consumes a vast amount of water and other raw materials (RRCAP 2007). Socio-economic and environmental characteristics of sustainable development are especially important within the

housing sector. This is due to its significant consumption of energy and water, its impact to environmental contamination and its influence on the socio-economic aspects of population lives (DCLG 2007). Thus, the construction sector needs to ensure the sustainability of existing and new houses. Low-energy building design can reduce the negative impacts of the construction and maintenance processes. This design approach is the resourceful exploitation of the building form and its envelope with the intent of saving energy. The above could be complemented by employing renewable technologies to supplement the power requirements.

\*Corresponding author: Tel: +7(7172)706146  
Email: [stokbolat@nu.edu.kz](mailto:stokbolat@nu.edu.kz)

According to Tokbolat 2012, the synergistic integration of inherently low energy building design, intelligent systems and renewable technologies (sustainable) gives rise to a truly energy efficient building. When analyzing or designing low energy buildings, the following aspects are normally examined (Riju 2009):

- a. Site layout and orientation: analyzing the site features such as its surrounding land and climate, prevailing winds, solar resource, adjacent buildings and access to infrastructure are all predominant factors which have a direct bearing on the building shape and orientation. In urban environments, adjacent buildings can provide shading from the sun to the advantage or disadvantage of the building. These factors can be utilized, by careful design, for the benefit of the building, in terms of energy consumption (ERI 2004).
- b. Building Shape: Optimum shape of a building is one which transmits the least amount of heat from the interior to the outside during the winters and admits the minimum amount of solar radiation during the summers.
- c. Building envelope and insulation: the envelope is a highly crucial factor in the design of buildings as it performs several functions of protection from the external environment, noise, pollution and provides comfortable interiors. But most importantly, it determines the rate of flow on energy within the internal and external environment of the building. The efficiency of the envelope has a direct influence on the energy consumption of the building. It could lead to unnecessary over-sizing of the mechanical equipment, if not designed carefully. However, a proper design could help reduce the mechanical load to great extents.
- d. Façade: All-glass façade buildings seem to be extremely popular with architects and property developers all over the world. No doubt, its sleek and polished appearance is quite attractive and

greatly enhances the overall aesthetics of the building.

- e. Glazing: Designers tend to include large areas of glazed surfaces, in the form of atriums, skylights, all-glass walls and larger windows. Such features can result in intolerable internal conditions, high electricity bills for cooling (Baker & Taleb 2002). In the past, windows were inefficient and hence some restrictions were imposed on the allowable window area. Technological improvements gained in the glazing technology have been wasted on larger window-areas rather than increased efficiency. The three parameters one needs to take care of while choosing window glazing types are the solar heat gain coefficient SHGC, visible transmittance VT and U Value. SHGC is to be kept to a minimum. Other common types of window glazing are reflective-coated, low-e coated, tinted and the double or triple-glazing (Profinanse 2012).
- f. Daylighting. Shading: shading by means of external or internal devices can be utilized. External shading devices are more effective compared to internal devices such as internal roller blinds, venetian blinds etc. External shading devices may be in the form of overhangs, louvers, vertical blinds and the more complex ones will be operable which is more preferred (Smith *et al.* 2010).
- g. Natural Ventilation: Incorporating natural ventilation into today's air conditioned commercial buildings is not straightforward. In an extreme climate it is normally difficult to integrate natural ventilation. Mixed mode ventilation, if at all, is only possible during the four winter months (Bia 2010).

Kazakhstan is a rapidly emerging Central Asian country with a vast territory (the 9<sup>th</sup> largest in the world) and rich supply of open mineral and fossil fuel resources (Fig. 1). The increase of GDP of the country during the last decade of more than ten percent per annum has been caused essentially by the increased exportation of oil, gas and other raw materials. This has considerably upgraded the general socio-economic condition of the country's population (UN 2008).



Fig. 1 Kazakhstan (Maps, 2012)

Kazakhstan's current rapid progress has triggered flourishing of the construction sector. According to Pmrpublications 2008, the rate of construction productivity in Kazakhstan has increased by approximately eight times during the last ten years. A major proportion of this output is relevant to the housing construction. This is most likely due to the various governmental projects that have been undertaken with the aim of increasing the average provision of accommodation and, consequently, decreasing the considerable housing scarcity. The housing deficit in Kazakhstan is currently 100 million square meters (Today.kz 2012).

According to Yearbook 2007, the rate of investing financial resources into the housing sector in Kazakhstan increased by sixty percent in 2007 alone. Future plans are seen as more ambitious. For instance, the country plans to build nearly 6 million square meters of housing per year, improving the living conditions of nearly 350,000 families. These plans will be supported by annual financial investments with nearly 140 million USD per year (Kazrealty 2012). If all these houses are built according to low energy design principles then energy consumption of thousands of houses would considerably decrease and, therefore, save money and the environment at the same time (Tokbolat 2012).

Taking into consideration the above mentioned facts the aim of this paper is to analyze a typical set of buildings in Astana, the capital of Kazakhstan. This permits calculation of the average energy consumption in a standard building, and by modifying its key features will be able to evaluate to what extent these modifications could reduce overall energy consumption. Observations have shown that the most common type of new building in Astana is a nine-story building made of ceramic bricks (Krn.kz 2012). In order to analyze the energy saving potential of such buildings it has been decided to choose a complex that will include at least a dozen typical nine-story buildings. As a result, three identical residential complexes called micro districts Dostar-1, Dostar-2, Dostar-3 have been chosen (Bi-group.kz 2012).

Modeling and analysis of flow conditions around buildings with different configurations have been carried out by means of a specialized computational fluid dynamics (CFD) analysis tool. This analysis tool is used to calculate the distribution of temperature, velocity, pressure and other properties of fluids, in other words, to provide data on temperature and airflow distribution in and around considered buildings.

It should be mentioned here that the scope of the paper does not permit examining the effect of all design variables, therefore, emphasis will be placed on buildings' orientation and configurations. The influence of orientation and building design and proximity will also be assessed with reference to possible energy efficiency and associated environmental conditions

including wind comfort and safety. It is recommended for the further studies to take into consideration the financial aspects of the energy efficiency measures. This is also relevant to the financial equivalents of the saved energy due to incorporation of the mentioned low energy design aspects.

## 2. Approach

In order to achieve the project's objectives which are to evaluate effects of building orientation and configuration on its energy consumption and comfort of wind environment, a combination of numerical simulations using the advanced simulation software Design Builder 2012 complimented by a separate thermal energy assessment and detailed calculations has been also conducted. These were augmented by the CFD simulations which allowed observing wind flow distribution around buildings. Methodologies applied are described in detail in the following sections.

### 2.1 Input data

#### 2.1.1 Buildings description and technical characteristics

The housing development used in this study is the Dostar micro district which is located in one of the intensively developed urban areas of Astana. This district was selected due to the fact that a majority of the housing construction in Kazakhstan takes place in this area (Bi-group.kz, 2012). The Dostar is the largest district in the capital not only in size (21 hectares), but also in terms of the number of apartments; it has over three thousand flats of varying size. This work focuses only on one of three identical residential blocks as they are all built in the same manner and the same technical specifications. It is assumed that results of energy simulations, thermal assessment and CFD analysis of one complex can be applied to other as they are all will encounter similar climatic and physical conditions. To analyze the behavior of an average high-rise building while standing alone and when it is a part of a group of buildings the Dostar 2 residential complex was chosen. This complex consists of 7 typical buildings. All buildings are 9 floor buildings and six of them joined together create a «П» type box surrounding a single standing building in the center. The yard side of the complex contains three large playgrounds and a small square. Given the importance of the yard as a central leisure space, a good wind flow is important. The absence of a building which would play the role of an obstacle protecting the buildings and a yard side from the predominant winds from North-East direction is investigated. The study also assesses how changing the complex orientation can impact air flow pattern and overall behaviors. Detailed information regarding the buildings is represented in Table 1 below. It is important to note that most of the data presented below was used as an input data to the CFD code.

**Tabel 1**  
General Information

Building N	N of floors	Orientation	Description	Main features	Costs in Astana
1	9	South-East		<b>Construction material:</b> brick	
2	9	South-East		<b>Outer layer:</b> ceramic brick	
3	9	South-West	Multi-apartment residential complex with 850 apartments:	<b>Windows;</b> triple-layer glazing	<b>Energy:</b> 5 cents/kW*hr (night)
4	9	South-West	210: 36-43 m <sup>2</sup>	<b>Heating:</b> central grid	8 cents/kW*hr (daytime)
5	9	North-West	455: 56-65 m <sup>2</sup>	<b>Ventilation:</b> natural	<b>Natural gas:</b> \$2.14/m <sup>3</sup>
6	9	North-West	185: 75-81 m <sup>2</sup>	<b>Water supply:</b> national grid	<b>Heating:</b> 47 cents/m <sup>2</sup>
7	9	North-East		<b>Sewage system:</b> national grid	<b>Hot water:</b> 77 cents/m <sup>3</sup>
				<b>Ceiling height:</b> 2.5 m	<b>Cold water:</b> 77 cents/m <sup>3</sup>
				<b>Wall thickness:</b> external-690 mm	<b>Sewage:</b> 11 cents/m <sup>3</sup>
				internal btw apts (aeroconcrete) – 200mm	
				internal btw rooms (aeroconcrete) – 100mm	
				<b>Doors:</b> metal	
				<b>Bakony:</b> single-layer glazing	

### 2.1.2 Brief description of Climate in Astana

Astana is located on the northern part of Kazakhstan, and situated on the zone of steppe. The climate of Astana is acutely continental and characterized by extreme weather conditions. The compulsory building code in Kazakhstan is given in reference (CNRK 2011). The data on climate conditions of all regions of Kazakhstan are used for the design of all structures and facilities (residential, industrial, etc.). According to this code, the values of climatic parameters of Astana are as following (Table 2).

**Table 2**  
Climatic parameters of Astana for a cold/warm period of a year

Cold period	
Air temperature of the coldest 5 days with probability of 0.98, °C	-36
Air temperature of the coldest day with probability of 0.98, °C	-41
Absolute minimum air temperature, °C	-52
Average daily amplitude of air temperature during the coldest month, °C	9
Average daily relative humidity of air during the coldest month, %	80
Amount of precipitation during the period of November – March, mm	88
Predominant wind direction during the period of December – February	SW
Maximum of average wind speeds on rhumbs during January, m/s	5.9
Warm period	
Air temperature with probability of 0.98, °C	29.5
Average maximum air temperature during the warmest month, °C	27
Absolute maximum air temperature, °C	39
Average daily relative humidity of air during the warmest month, %	57
Amount of precipitation during the period of April – October, mm	238
Predominant wind direction during the period of June – August	NE
Maximum of average wind speeds on rhumbs during July, m/s	3.7

### 2.2 Thermal load calculation

#### 2.2.1 Governing relations

The thermal load calculations of the walls were carried out according to (CNRK 2002). The required value of heat transfer resistance is determined as maximum of:

$$R_0^{req} = \frac{n(t_{in} - t_{out})}{\Delta t \alpha_{in}} \quad (1)$$

where  $n = 1$ ;  $t_{in} = 25^\circ\text{C}$ ;  $t_{ext} = -36^\circ\text{C}$ ;  $\Delta t = 4^\circ\text{C}$ ;  $\alpha_{in} = 8.7 \text{ W}/(\text{m}^2 \cdot \text{C})$  from (CNRK 2002).

Another value taken from CNRK 2002 is based on a parameter  $D_d$  called as “Degree-days of the heating period”. According to CNK 2006, for Astana  $D_d$  is taken as 6286 °C·day. Interpolating the values from CNRK 2002 for  $D = 6286^\circ\text{C}\cdot\text{day}$  and calculating out from (1), one can get maximum value of  $R_0^{req} = 3.6 (\text{m}^2 \cdot \text{C})/\text{W}$ . It implies that for the walling construction the following condition should be satisfied:

$$R_0^{req} < R_0^{des} \quad (2)$$

The design value of heat transfer resistance is determined as:

$$R_0^{des} = \frac{1}{\alpha_{in}} + R_{wc} + \frac{1}{\alpha_{ext}} \quad (3)$$

where  $R_{wc} = \delta/U$ ;  $\alpha_{ext} = 23 \text{ W}/(\text{m}^2 \cdot \text{C})$  from CNRK 2002.

The wall construction consists of 4 layers description of which is given in the Table 3.

The calculated value of  $R_0^{des} = 3.63 (\text{m}^2 \cdot \text{C})/\text{W}$ . This shows that the condition (2) is satisfied. Nevertheless, it leaves the possibility of further development of the materials of the wall construction with the help of varying the structure (material type, thickness, and configuration).

**Tabel 3**  
Description of the Wall construction

Scheme	Layer	Thickness, $\delta$ , m	U-value, $W/(m^2 \cdot ^\circ C)$
	Brickwork	0.12	0.56
	Polysterene	0.0795	0.034
	Brickwork	0.5	0.56
	Cement plaster	0.013	0.58
Overall number of layers: 4			

**Tabel 4**  
Values of  $TD_{EQw}$  and SF

Parameter	Cardinal directions							
	N	NE	E	SE	S	SW	W	NW
$TD_{EQw}, ^\circ C$	1.70	2.05	2.40	1.90	1.40	1.75	2.10	1.90
SF	104	138	168	197	191	202	175	138

**2.2.2 Evaluation of the Overall Thermal Transfer Value (OTTV)**

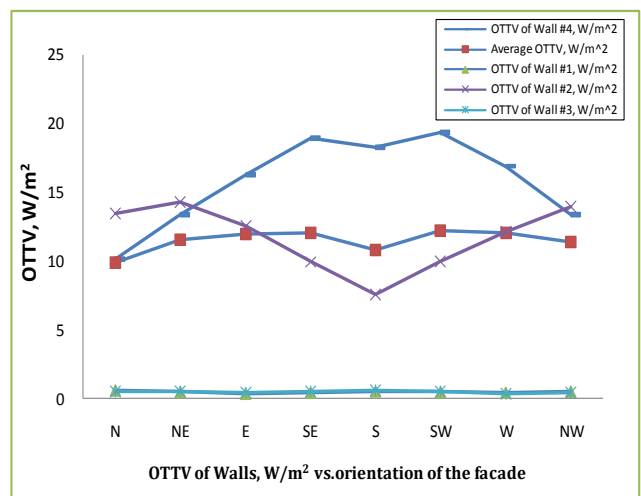
For the approximate estimation of the energy consumption of a building envelope, the calculation and comparison of the external wall OTTV value depending the orientation of the building was fulfilled on the base of HKBA 1995. The external wall OTTV value is calculated using the following formula:

$$OTTV_w = \frac{(A_w \times U \times \alpha \times TD_{EQw}) + (A_{fw} \times SC \times ESM \times SF)}{A_{ow}} \quad (4)$$

where,  $A_w = 303.264 \text{ m}^2$ ;  $U=0.275 \text{ W}/(\text{m}^2 \cdot ^\circ C)$ ;  $\alpha=0.88$ ;  $TD_{EQw}$  depends on the cardinal direction;  $A_{fw}$ : façade -  $275.4 \text{ m}^2$ ; back side -  $201.6 \text{ m}^2$ ;  $SC=0.5$  for triple glazing;  $ESM=1$  for no shading; SF depends on the cardinal direction;  $A_{ow}$ : opaque walls -  $303.264 \text{ m}^2$ , façade and back side walls -  $1462.374 \text{ m}^2$ .

Since the main variable in this study is the building orientation all other parameters were held constant. The values of the wall and fenestration areas were determined on the drawing of the plan and axonometrical view of the building. The values of the  $TD_{EQw}$  and SF are presented in Table 4. For  $TD_{EQw}$  the density of wall construction was taken into account.

The results of the calculations are presented as graphs plotted on OTTV values vs. cardinal orientations (Fig. 2). Here, denomination of the walls by numbers is shown in Fig. 3. As OTTV is considered as a criterion for the estimation of the building envelope for absorption of the external heat and release (loss) of internal heat, for energy savings its value should be minimum.



**Fig. 2** Results of OTTV calculations

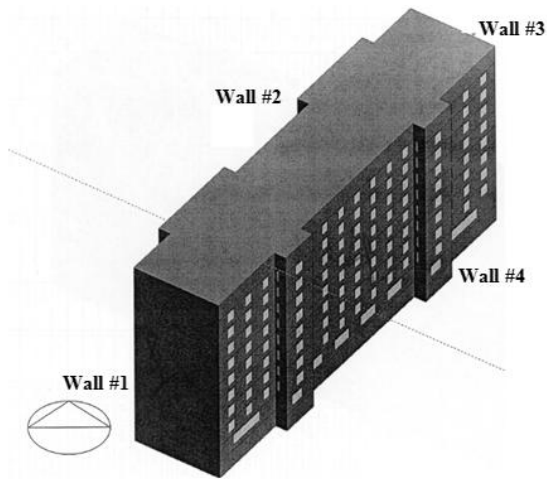


Fig. 3 Building configuration

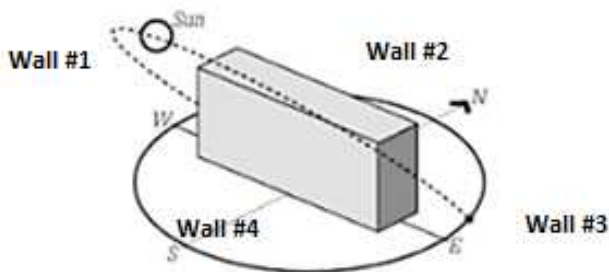


Fig. 4 Building Orientation in Northern Hemisphere (Zafirof & Al-Hafzan, 2010)

In this study, results indicate that the least heat loss corresponds to the façade of the building (Wall #4) which faces South.

According to Allen & Jano 2001 “...the most desirable orientation of a rectangular building is to align its elongated axis along the East-West direction” (Fig. 4). Moreover, in Zafirof & Al-Hafzan 2010 for the applications in hot and humid climates directing a “longer façade towards south north” is considered as right direction. Therefore it seems that the overall calculation results give reasonable and accurate estimation.

### 2.2.3 Calculation of specific (design) heating energy demand for cold season

Using the methodology provided in CNK 2006, the value of specific heating energy demand of the building for cold season has been calculated. This parameter is denominated as design, and the required one is also given in that code. From CNK 2006 for residential 8-9-floor building the required value is taken as 80 kJ/(m<sup>2</sup>·°C·day). So, the following condition of heating energy demand according to CNK 2006 code should be satisfied:

$$q_h^{des} \leq q_h^{req} = 80 \frac{kJ}{m^2 \cdot C \cdot day} \quad (5)$$

Design value is determined using following formula:

$$q_h^{des} = \frac{10^3 Q_h^y}{A_h \cdot D_d} \quad (6)$$

Here  $A_h=4800.78 \text{ m}^2$ ;  $D_d$  is the same as in 2.2.1. Useful energy for heating is calculated as:

$$Q_h^y = [Q_h - (Q_{int} + Q_s) \cdot v \cdot \xi] \beta_h \quad (7)$$

Here,

$$Q_h = 0.0864 K_m \cdot D_d \cdot A_e^{sum} \quad (8)$$

$$K_m = K_m^{tr} + K_m^{inf} \quad (9)$$

$$K_m^{tr} = \beta \left( \frac{A_w}{R_w^r} + \frac{A_f}{R_f^r} \right) \quad (10)$$

Here,  $A_w = 3531.276 \text{ m}^2$ ;  $R_w^r = 3.63 \text{ (m}^2 \cdot \text{°C)/W}$ ;  $A_f = 477 \text{ m}^2$ ;  $R_f^r = 0.6 \text{ (m}^2 \cdot \text{°C)/W}$ ;  $\beta = 1.13$ .

$$K_m^{inf} = \frac{0.28 c_n \beta_v V_h p_a^{ht} k}{A_e^{sum}} \quad (11)$$

where,  $c=1 \text{ kJ}/(\text{kg} \cdot \text{°C})$ ;  $n_a=1.11 \text{ hr}^{-1}$ ;  $\beta_v=0.85$ ;  $P_a^{ht} = 1.33 \text{ kg/m}^3$ ;  $V_h=12962.106 \text{ m}^3$ ;  $A_e^{sum}=5033.276 \text{ m}^2$ .

Domestic heat gaining is determined as:

$$Q_{int} = 0.0864 q_{int} \cdot z_{ht} \cdot A_l \quad (12)$$

Where,  $z_{ht} = 216 \text{ days}$ ;  $A_l = 3567.06 \text{ m}^2$ .

$Q_s$  can be found out as:

$$Q_s = \tau_f \cdot k_f \cdot (A_{F1} \cdot I_1 + A_{F2} \cdot I_2 + A_{F3} \cdot I_3 + A_{F4} \cdot I_4) \quad (13)$$

Here:  $\tau_f=0.5$ ;  $k_f=0.67$ ;  $A_{Fi}$ :  $A_{F1}=A_{F3}=0$ ;  $A_{F2}=201.6 \text{ m}^2$ ;  $A_{F4}=275.4 \text{ m}^2$ ;  $I_i$  depends on the cardinal direction.

Also, for (7) one should consider  $v = 0.8$ ;  $\xi = 0.95$  for system equipped with thermostat;  $\beta_h = 1.11$ . Since the orientation of the building has been the focus in this study, the only variables for the heating energy consumption of the building are values of solar radiation

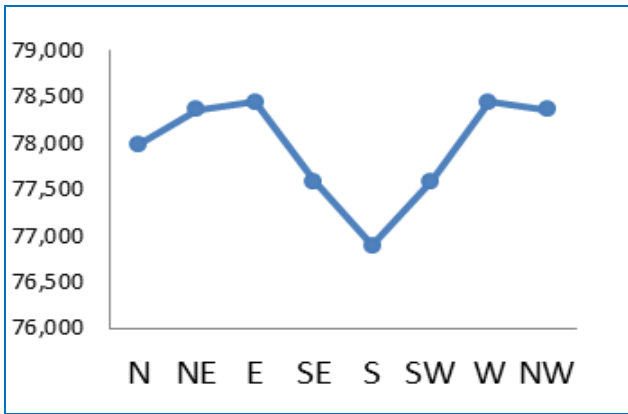


Fig. 5 Specific heating energy demand value vs. facade orientation of the building

depending on the cardinal direction. According to (7), the more value of  $Q_s$  the less useful heating energy is needed. The specific heating energy demand values calculated using (6) for different cases with various products of area of fenestration and the solar factor are found and the graph plotted on the base of these results is presented in Fig. 5.

If to consider the tendency of change for specific heating energy demand value and heat gaining through fenestration from solar radiation ( $Q_s$ ), turning the façade from NE (given orientation) to S gives increase of  $Q_s$  by 22% and decrease of  $q_{h,des}$  by  $\approx 2\%$ . Overall calculation results show that the condition (5) is satisfied for given building design case.

### 2.3 Thermal assessment validation by "Orientation vs. Energy use" simulations

At the initial stage of the study, it has been decided to choose one out of the 18 buildings and to vary its orientation systematically. Initial position (façade) of the chosen building was 35 degrees towards North-East direction. As it can be seen from the Fig. 6, turning the building in a clockwise direction leads to increase of total site energy – amount of heat and electricity consumed by a building. Turning the building in opposite direction (anti-clockwise) has shown that the building tends to gradually reduce its energy consumption. This process takes place only up to the point where elongated axis is aligned along the East-West direction. Turning the building more leads to increase of energy consumption (Fig. 7). Therefore, these results show that for the considered building the North facing direction is optimal.

The North facing direction, however, is not the only optimal direction. Drawing correlation between the building's orientation and its energy consumption in a larger scale shows that the South facing direction is also suitable (Fig. 8). In order to investigate further which direction is optimum in terms of energy saving 180

degree facing was enlarged. This allowed to observe that 185 degree direction can save 0.25% more than the North facing direction (zero degrees), Fig. 9. Therefore, this comparison has shown that the South facing direction (185 degrees) is the most optimal orientation.

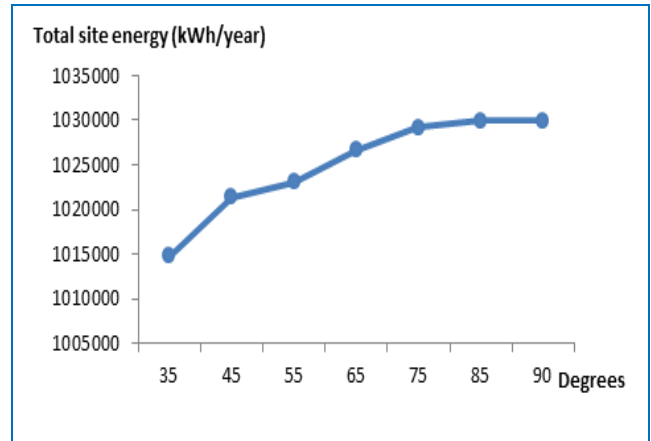


Fig. 6 Total site energy vs. Orientation

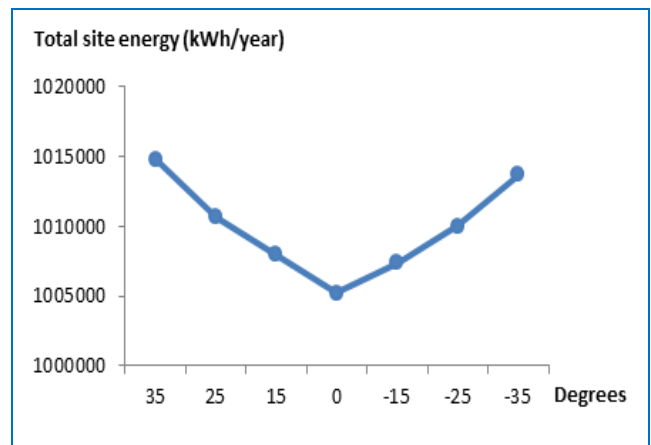


Fig. 7 Total site energy vs. Orientation

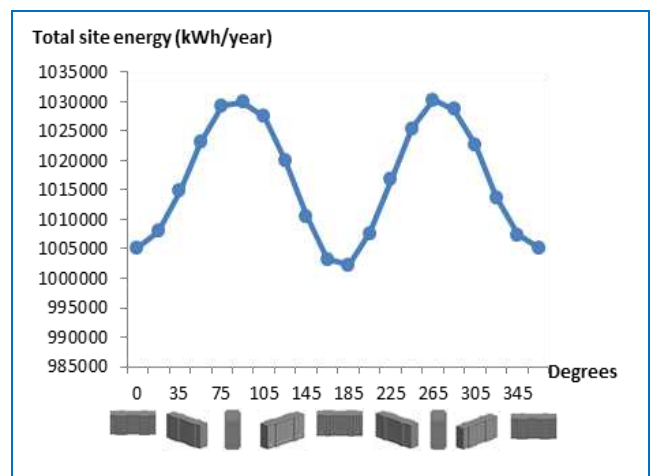


Fig. 8 Total site energy vs. Orientation

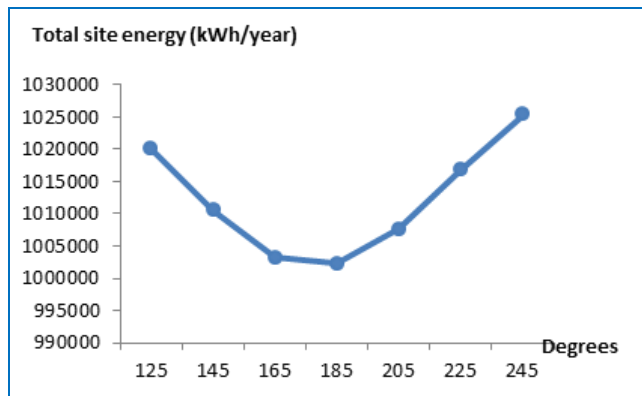


Fig. 9 Total site energy vs. Orientation

## 2.4 CFD analysis

### 2.4.1 The boundary conditions

The boundary condition has been set as initial velocity values (correspondingly  $u$ ,  $v$ ,  $\omega$ ) direction and ambient outdoor temperature which are constant through the domain; and final conditions are automatically built-in as pressure equals to atmospheric pressure. So, overall boundary conditions can be expressed as following:

$$\begin{cases} u = \text{const} = 5,9 \text{ m/s} \\ v = 0 \\ \omega = 0 \\ T = \text{ambient outdoor temperature} \\ p = p_{\text{atm}} \end{cases}$$

where  $u$  is the predominant wind velocity in this region, and  $T$  is indicated for winter period.

Calculation option data, include: *discretisation*, among built-in three discretisation schemes, Upwind scheme has been used for the calculation; *turbulence model*, turbulence was modelled using k-e model; and *iterative convergence of residual display parameters*, the maximum number of outer iterations has been set equal to 5000. Residual display parameters are mass and velocity.

### 2.4.2 Results overview

The application of CFD for pedestrian – level wind studies was initiated by the early, more general research efforts in which CFD was applied to study the wind-flow pattern around isolated (single standing) buildings (Baskaran & Kashef, 1996). In order to develop further, this paper attempted to establish correlations between orientation and configuration of a building(s) and its wind system pattern and behavior. In order to find out how the above mentioned aspects affect the wind flow distribution, it has been decided to run simulations separately for both configurations: i.e. for a single standing building and a complex (several blocks).

### The Single Standing Building Model

This model was simulated for 12 orientations of the target building: 35°, 80°, 125°, 170°, 215°, 260°, 305°, 350° (8 directions with increment of 45 degrees and starting with the initial orientation 35°) and the main 4 directions 0°, 90°, 180°, 270° (the latter ones were taken intentionally in order to compare with the previous model results and only they are presented in the table).

This type of arrangement is also one of the often encountered arrangements in Astana. Usually people living in such isolated buildings complain on lowering of indoor temperature due to winds continually blowing on the external walls and windows. The outdoor conditions are also reported to be uncomfortable mainly due to open space around a building. In fact, neighboring buildings do not provide protection from intensive winds typical to Astana if they are not surrounding the considered building (Time.kz 2012). This model is also characterized by a relatively high level of nuisance as ventilation systems joining with outdoor wind flows can create drafts in the apartments and lift shafts (E-vesti.kz 2011).

Simulations have shown that the initial orientation of the considered building is the best fit (Fig. 10). In contrast to other directions current orientation is found to be providing more comfortable environment. The yard side of the building has the lowest level of wind speed and pressure. Whilst almost all other orientations

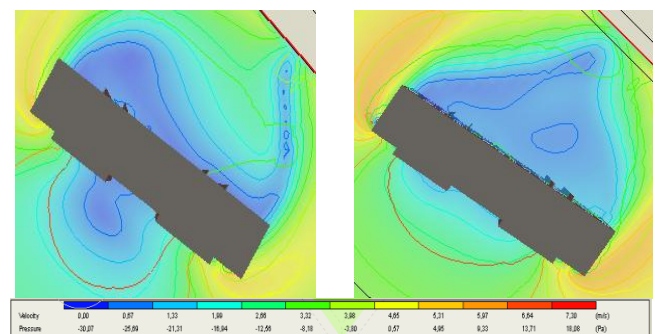


Fig. 10 Wind and pressure distribution around the single standing building at 1.35 m and 20 m height levels. Direction - 35° (initial position)

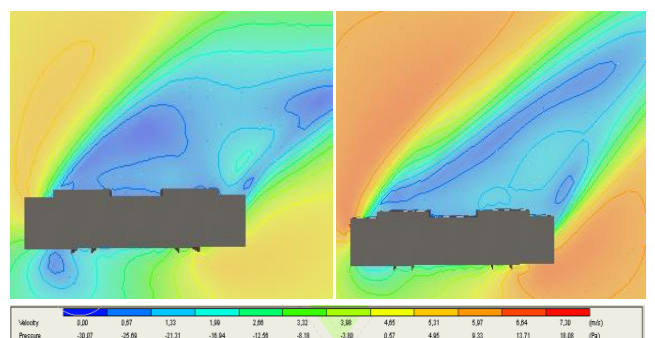


Fig. 11 Wind and pressure distribution around the single standing building at 1, 35 m and 20 m height levels. Direction - 180°

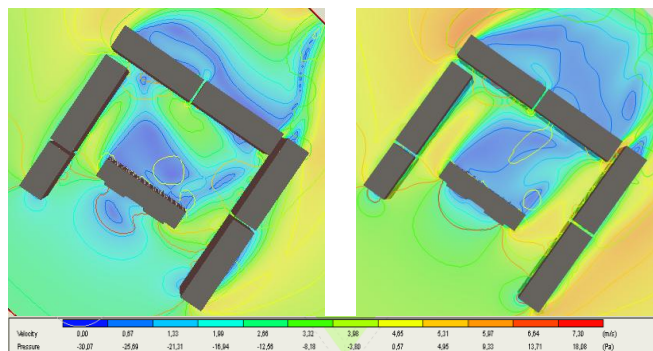


create smaller comfort zones as, for example, in case of 180° (Fig. 11), the initial direction allows creating larger propitious wind environment including the rear side of the building.

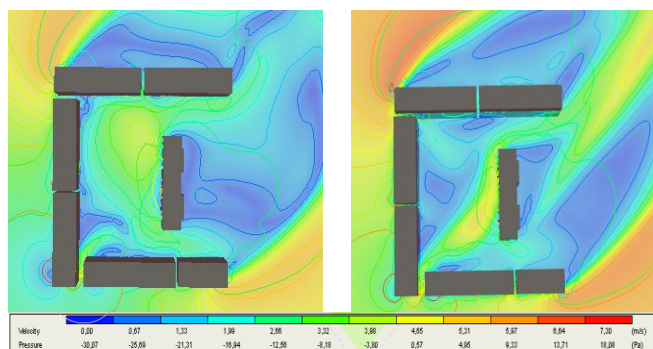
*Multiple building configurations*

Wrong placement of buildings with respect to each other, inappropriate distance between two adjacent buildings as well as their orientation with respect to the dominant wind direction can sometimes cause severe adverse effects. Durgin & Chock 1982 proved that uncomfortable wind conditions have been destructive to success of new buildings. For instance, Wise 1970 reports about supermarkets built-in in one of the blocks were left without visitors due to windy environment. Lawson & Penwarden 1975 reported that dangerous wind condition has led to death of a couple of elderly people after they were blown over by sudden wind drafts near a high-rise building. It is an often encountered situation in Astana when people are drawn back by wind and are not able to go through passing spaces (arches) between adjacent buildings (OldKurier 2012).

CFD simulations for this model were completed for five main orientations: 0°, 35°, 90°, 180°, 270°; with original direction of the target building (the one in the center of the complex) and the whole complex - 35° towards the North-East.



**Fig. 12** Wind and pressure distribution around the complex at 1, 35 m and 20 m height levels. Direction - 35° (initial position)



**Fig. 13** Wind and pressure distribution around the complex at 1, 35 m and 20 m height levels. Direction - 270°

As the complex currently exists, it was aimed to compare actual orientation with other potential alternatives. As it can be seen from the CFD images in the Figure 12, the wind flow pattern between the buildings when they are located in a box-shaped form is quite satisfactory. The yard site, where the most of time of tenants is spent, has low level of wind velocity and pressure. Images present the plan view of the computed velocity and pressure fields around the buildings at 1.35 m (pedestrian level) and 20m (middle of the domain height) from the ground level for normal wind conditions. Values of wind velocity and pressure are distinguished by color and are indicated on the scale.

However, changing the orientation of the complex has shown that there are setups that provide more favorable wind conditions. For instance, turning the object to 270° direction has allowed reducing the wind speed and pressure inside the “box”. High wind speed and pressure values noticeable in the initial position (Fig. 12) dropped down as the surrounding buildings started to hamper the effect of winds from predominant winds direction (Fig. 13).

Thus, simulation results also show that complex with the same configuration model can create different wind environments given different orientations. Comparing snapshots for different orientations (degrees) the study concluded that all simulated directions have different effects on the local flow development.

*2.4.3 Comparative assessment*

Comparison of two cases shows that multiple buildings configuration as expected, provide moderate and controlled conditions in terms of wind velocity and pressure levels than the stand alone single building model. Although there are areas where turbulence takes place but they do not seem to be excessive in nature (within the stated conditions). Figure 11 shows that the single standing building, in turn, is characterized by quite high speed wind flows around it and noticeable high pressure levels at the corners of the building. With regard to orientation both models seem to have the best fit degree with respect to North and wind direction. In the case of the building complex, most desirable conditions are created when it is turned to 270 degrees direction. It seems to be obvious as orientation of complex close to this value creates “blocking effect” to the predominant winds. The inner area seems to be protected from winds by surrounding buildings. The yard side can be categorized as sheltered. In case of a single standing building the best fit orientation is considered its initial orientation (35°). As the wind direction (225°) and the building’s façade (yard) are in the same directions they are most likely to create the most quiet and safe environment among all.

The optimal building orientation and configuration based on the results of simulations should be considered carefully and validated by on-site measurements. As this

study employs a specialized code, a proposal of the most optimal features of two different models will be purely based on the analysis of CFD results. According to the above presented comparison, it is suggested to consider the multiple buildings configuration (a box-shaped in this case) rather than a single standing building while designing future housing developments. Other types of multiple building configurations should be studied too. With respect to buildings' orientation it is recommended in case of a complex model to turn the fully surrounded side of a "box" opposite to the predominant wind direction (270° in this case). In the latter model, a building should be located with the rear side opposite to the wind direction (35° in this case).

### 3. Conclusion

This analysis presents a snapshot of the evaluation of low-energy building design strategies for the extreme weather conditions in Astana, Kazakhstan. Computational tools have allowed taking into account various climatic features common for the locality. For instance, temperature ranging between -35 to +40 C, direction of strong winds, duration of daylight time, etc. Besides, it was also possible to include a wide range of construction specific data such as used construction materials, type of activities typical to spaces in a building, HVAC system, etc. The lowest values for OTTV have been found out in case of North-South direction of the long facades of the building. Also, even though for consideration of all cardinal directions the design value of the specific heating energy demand is less than the required one, estimation of the results show that the south orientation of the main façade (with larger fenestration factor) is the most favorable case. Therefore, the optimum balance comes up when façade of the building directed to the South.

The influence of orientation and configuration is discussed with reference to energy efficiency and associated wind comfort and safety. The effect of these aspects on energy consumption and comfortable wind environment has been assessed using CFD analysis and proved to have positive correlation. This means that these two parameters actually affect the energy and wind comfort aspects. Single building and multiple building configurations have been analyzed and compared. According to the findings, multiple buildings configuration has more plane wind conditions rather than a single standing building. With respect to orientation the former one should be modeled with the fully surrounded side of a "box" opposite to the predominant wind direction whereas the latter one should be located with the rear side opposite to the wind direction. Thus, there is a potential direction in which construction industry can move. The Kazakh traditional way of building orientation is dictated not by the energy efficiency or the wind comfort and safety, but more by

atheistic aspects. According to several interviews standard planning seems to locate a new building parallel to existing roads or perpendicular to a neighboring building. In order to meet the challenges of climate change the Government has to consider all possibilities of building design optimization including suggested "orientation and configuration aspect" as well as incorporation of available sustainability practices and technologies.

### Nomenclature

$A_F$	area of fenestration, $m^2$
$A_{Fi}$	area of fenestration of $i$ -th side of the building
$A_{fw}$	area of fenestration in wall, $m^2$
$A_h$	sum of heated floor area, $m^2$
$A_l$	for residential buildings: total area of living rooms and kitchens, $m^2$
$A_{ow}$	= $A_w + A_{fw}$ , gross area of external walls, $m^2$
$A_w$	area of opaque wall, $m^2$
$A_e^{sum}$	Total area of internal walling construction
$ESM$	external shading multiplier
$I_i$	average amount of solar radiation onto vertical surface at real cloudiness during heating season with respect of the orientation of the building facades, $MJ/m^2$
$K_m$	total coefficient of heat transfer of the building which is the sum of transmission coefficient and infiltration coefficient of the building, $W/(m^2 \cdot ^\circ C)$
$\rho_{air}^{ht}$	Density of air during heating period, $kg/m^3$
$Q_{int}$	domestic heat gaining during heating period
$Q_h$	total heat loss through external walling, $MJ$
$Q_s$	heat gaining through fenestration from solar radiation during the heating period, $MJ$
$Q_{h}^u$	useful energy for heating during heating season, $MJ$
$R_w^f$	design thermal resistance of the wall construction
$R_f^f$	design thermal resistance of fenestration
$SC$	shading coefficient of fenestration in wall
$SF$	solar factor for the vertical surface, $W/m^2$
$TD_{EQw}$	equivalent temperature difference for wall, $^\circ C$
$U - U$	value of opaque wall, $W/(m^2 \cdot ^\circ C)$ ;
$V_h$	Heated volume of the building
$c$	specific heat capacity of air, $kJ/kg^\circ C$
$k$	coefficient of the impact of counter heat flow
$k_F$	coefficient of relative penetration of the solar radiation through the fenestration system
$n$	coefficient taking into account the location of the walling construction with respect to outdoor air
$n_a$	Average air ventilation, $hr^{-1}$
$t_{ext}$	air temperature of the coldest 5 days with probability of 0.98, $^\circ C$
$t_{ht}$	average external temperature during heating period, $^\circ C$
$t_{in}$	indoor air temperature, $^\circ C$
$\Delta t$	normative value of indoor and outdoor temperature drop $^\circ C$
$q_{int}$	amount of domestic heat release per 1 $m^2$ of useful area, $W/m^2$
$Z_{ht}$	duration of the heating period, days
$\alpha$	absorptivity of opaque wall
$\alpha_{in}$	coefficient of heat release (loss) of the inner surface of the wall constructions, $W/(m^2 \cdot C)$
$\beta$	Coefficient accounting for auxiliary heat loss due to orientation
$\beta_h$	coefficient accounting for additional heat consumption
$\beta_v$	coefficient of air volume decrease due to walls
$\xi$	coefficient of automatic regulation of heating supply
$\tau_F$	shading coefficient
$\nu$	coefficient taking into account ability of walling construction to accumulate or release heat

## Acknowledgment

The authors would like to thank Nazarbayev University for the research funding, "BI GROUP" construction company for making available data on building complexes and Associate Professor of Mechanical Engineering Desmond Adair for his invaluable advice and guidance throughout this study in the area of CFD simulations.

## References

- Allen, B. & Jano, C. (2001) *Fundamentals of Building Construction; Materials and Methods*, p.230. John Wiley & Sons, Inc.
- Baskaran, A. & Kashef, A. (1996) Investigation of Air Flow Around Buildings Using Computational Fluid Dynamics Techniques. *Engineering Structures*, 18(11), 861-875.
- Baker, N. & Taleb, J. (2002) The Application of the Inclined Window Method for Passive Cooling in Buildings, *Architectural Science Review*, 45.
- BBC (2010) Kazakhstan-Country Profile, <http://news.bbc.co.uk/> (accessed date 15<sup>th</sup> April, 2012).
- Beatti, C. (2012) Measuring Carbon for Urban Development Planning, *The International Journal of Climate Change: Impacts and Responses*, 2-5.
- Bia, S., Luh, P.B., Qing-Shan J., Ziyang J., Wang F. & Song C. (2010) An Integrated Control of Shading Blinds, Natural Ventilation and HVAC Systems for Energy Saving and Human Comfort, *IEEE International Conference on Automation Science and Engineering*.
- Bi-group.kz (2012) Development and Civil Construction, <http://bi-group.kz/> (accessed date 3<sup>rd</sup> April, 2012).
- CNRK (2011) Construction Climatology. Construction Norms and Regulations of Kazakhstan, 2.04-01-2010, Almaty.
- CNRK (2002) Construction Heat Engineering, 2.04-03-2002, Astana.
- CNK (1995) Construction Norms of Kazakhstan. Energy Consumption and Thermal Protection of Residential (Civil) Buildings, 2.04-21-2004, Astana.
- DCLG (2007) *Building a Greener Future: Policy Statement. Department for Communities and Local Government*. The Stationery Office, London
- DesignBuilder (2012) <http://www.designbuilder.co.uk> (accessed date 9<sup>th</sup> March, 2012)
- Durgin, F.H. & Chock, A.W. (1982) Pedestrian Level Winds: A Brief Review. *Journal of the Structural Division, Proceedings of the Amer. Soc. Of Civil Engr.*, 108.
- E-vesti.kz (2011) Security Measures in The Operation of Elevators, <http://www.e-vesti.kz> (accessed date 10<sup>th</sup> April, 2012).
- Fletcher, C., Mayer, I.F. & Eghlimi A. (2001) CFD as a Building Services Engineering Tool. *International Journal on Architectural Science*, 2(3), 67-82.
- HKBA (1995) Hong Kong Building Authority Code for OTTV in Buildings, Hong Kong.
- Holm F. (2003) Towards sustainable built environment prepared for climate change? Presentation to Global Policy Summit on the Role of Performance-Based Building Regulations in Addressing Societal Expectations, International Policies and Local Needs, National Academy of Sciences, Washington, DC.
- Kazreality (2012) Market, <http://www.kazreality.kz/ru/market/> (accessed date 13<sup>th</sup> May, 2012).
- Krn.kz (2012) Real estate, <http://www.krn.kz/index.php> (accessed date 29<sup>th</sup> April, 2012).
- Lawson, T.V. & Penwarden, A.D. (1975) The Effects of Wind on People in The Vicinity of Buildings. 4<sup>th</sup> Int.Conf. Wind Effects on Buildings and Structures, Heathrow.
- Maps (2012) <http://www.google.com>, (accessed date 13<sup>th</sup> April, 2012)
- McAlpine J. D. & Ruby M. (2004) Using CFD to Study Air Quality in Urban Microenvironments. *Chapter 1 of Environmental Sciences and Environmental Computing*. Vol. II (P. Zannetti, Editor). Published by The EnviroComp Institute.
- OldKurier (2012) Astana Established to Amaze, <http://old.kurier.lt/?r=25&a=5602>, (accessed date 20<sup>th</sup> May, 2012).
- Pmrcpublications (2008) Global Liquidity Crisis Hits The Kazakh Construction Industry, <http://www.pmrpublications.com/>, (accessed date 10<sup>th</sup> May, 2012).
- Riju, C. (2009) *Low Energy Building Design for the UAE*. MSc in Energy dissertation, School of Engineering and Physical Sciences, Heriot Watt University (Dubai Campus).
- RRCAP (2007) Industrial Pollution, Part 2, p.71, [http://www.rrcap.unep.org/reports/soe/sa\\_part2\\_3.pdf](http://www.rrcap.unep.org/reports/soe/sa_part2_3.pdf), (accessed date 16<sup>th</sup> April, 2012).
- Smith G.B. (2010) Science of Daylighting in Building, *Renewable Energy*, 15, 325-330.
- Time.kz (2012) Rich People also Get Cold, <http://www.time.kz/index.php?module=news&newsid=25783>, (accessed date 10<sup>th</sup> April, 2012).
- Today.kz (2012) Housing Deficit in Kazakhstan Reaches 100 Million Square Meters, <http://www.today.kz/ru/news/finance/2010-06-25/23580>, (accessed date 12<sup>th</sup> April, 2012)
- Tokbolat, S., Tokpatayeva, R. & Al-Zubaidy, S. (2012) Low Energy Building Designs for Extreme Weather Conditions in Central Asia. *Proceedings of the ASME 2012 International Mechanical Engineering Congress & Exposition*.
- UN (2008) Environmental Performance Reviews. Kazakhstan, Second Review, <http://www.unecp.org/>, (accessed date 4<sup>th</sup> May, 2012).
- Wise, A.F.E. (1970) Wind effects due to groups of buildings. Royal Society Symposium, Architectural Aerodynamics, London.
- Yearbook (2007) Summary Statistical Yearbook of Kazakhstan, <http://www.yearbook.com>, (accessed date 16<sup>th</sup> April, 2012).
- Zafiro, A. & Al-Hafzan (2010) Energy Efficiency Towards Building Envelope An Analysis Study Between Main Library of University of Malaya Building and Library of UiTM Perak Building, *International Journal of Environmental Science and Development*, 1(2), 208-213.