



Katalog BPS : 5205010

STATISTIK TANAMAN BUAH-BUAHAN DAN SAYURAN TAHUNAN

Statistics of Annual Fruit and Vegetable Plants

INDONESIA 2008



**BADAN PUSAT STATISTIK
STATISTICS - INDONESIA**



Katalog BPS : 5205010

STATISTIK TANAMAN BUAH-BUAHAN DAN SAYURAN TAHUNAN

Statistics of Annual Fruit and Vegetable Plants

**INDONESIA
2008**

<http://www.bps.go.id>



**BADAN PUSAT STATISTIK
STATISTICS – INDONESIA**

**STATISTIK TANAMAN BUAH-BUAHAN DAN SAYURAN TAHUNAN
INDONESIA, 2008**

***Statistics of Annual Fruit And Vegetable Plants
Indonesia, 2008***

ISBN : 978 – 979 – 724 – 936 – 6

No. Publikasi / *Publication Number* : BPS. 05120.0803
Katalog BPS / *BPS Catalogue* : 5205010

Ukuran Buku / *Book Size* : 28 cm x 21 cm
Jumlah Halaman / *Total Pages* : 56 halaman / *pages*

Naskah / *Manuscript* :
Badan Pusat Statistik, Indonesia
BPS - Statistics Indonesia

Gambar Kulit / *Cover Design* :
Sub Direktorat Publikasi Statistik
Sub Directorate of Statistical Publication

Diterbitkan oleh / *Published by* :
Badan Pusat Statistik, Indonesia
BPS - Statistics Indonesia

Dicetak oleh / *Printed by* :
Boleh dikutip dengan menyebut sumbernya
May be cited with reference to the source

<http://www.bps.go.id>

KATA PENGANTAR

Badan Pusat Statistik (BPS) bekerjasama dengan Direktorat Jenderal Hortikultura telah menyusun data tentang banyaknya tanaman yang menghasilkan dan produksi Tanaman Buah-buahan dan Tanaman Sayuran Tahunan di Indonesia.

Data dalam publikasi ini merupakan Angka Tetap Tahun 2008 dan merupakan publikasi lanjutan Statistik Tanaman Buah-Buahan dan Sayuran Tahunan Indonesia 2007. Publikasi ini menyajikan data 22 jenis tanaman buah-buahan tahunan dan 3 jenis tanaman sayuran tahunan.

Kami sampaikan ucapan terima kasih kepada semua pihak yang telah membantu dalam pengumpulan, pengolahan dan penyajian data tanaman buah-buahan dan sayuran tahunan sampai terbitnya publikasi ini. Kami sangat mengharapkan saran yang bersifat membangun demi perbaikan publikasi ini di masa yang akan datang.

Jakarta, September 2009

KEPALA BADAN PUSAT STATISTIK

RUSMAN HERIAWAN

PREFACE

BPS-Statistics Indonesia in cooperation with the Directorate General of Horticulture have been compiling data of number of harvested plant and production of Annual Fruit and Vegetable Plants in Indonesia.

Data on this publication are the final figures of 2008 and the continuation publication of Statistics of Annual Fruit and Vegetable Plants in Indonesia in 2007. This publication presents data of 22 types of annual fruit plants and 3 annual vegetable plants.

We thanks to those who help in collecting, processing and reporting data of annual fruit and vegetable plants then this publication has been published. We appreciate for any suggestions and critics to improve this publication in the future.

Jakarta, September 2009

BPS – STATISTICS INDONESIA

CHIEF STATISTICIAN

RUSMAN HERIAWAN

DAFTAR ISI

KATA PENGANTAR	i
DAFTAR ISI	ii
PENJELASAN	iii
RINGKASAN	1
1.1. Produksi dan Banyaknya Tanaman Alpukat yang Menghasilkan Menurut Propinsi 2008	8
1.2. Produksi dan Banyaknya Tanaman Belimbing yang Menghasilkan Menurut Propinsi 2008	9
1.3. Produksi dan Banyaknya Tanaman Duku/Langsap/Kokosan yang Menghasilkan Menurut Propinsi 2008	10
1.4. Produksi dan Banyaknya Tanaman Durian yang Menghasilkan Menurut Propinsi 2008	11
1.5. Produksi dan Banyaknya Tanaman Jambu Biji yang Menghasilkan Menurut Propinsi 2008.....	12
1.6. Produksi dan Banyaknya Tanaman Jambu Air yang Menghasilkan Menurut Propinsi 2008	13
1.7. Produksi dan Banyaknya Tanaman Jeruk (Siam/Kepron + Besar) yang Menghasilkan Menurut Propinsi 2008	14
1.7.1. Produksi dan Banyaknya Tanaman Jeruk Siam/Kepron yang Menghasilkan Menurut Propinsi 2008	15
1.7.2. Produksi dan Banyaknya Tanaman Jeruk Besar yang Menghasilkan Menurut Propinsi 2008	16
1.8. Produksi dan Banyaknya Tanaman Mangga yang Menghasilkan Menurut Propinsi 2008	17

CONTENTS

<i>PREFACE</i>	<i>i</i>
<i>CONTENTS</i>	<i>ii</i>
<i>EXPLANATORY NOTES</i>	<i>iii</i>
<i>SUMMARY</i>	<i>1</i>
<i>1.1. Production and Number of Harvested Plant of Avocado by Province 2008</i>	<i>8</i>
<i>1.2. Production and Number of Harvested Plant of Star Fruit by Province 2008</i>	<i>9</i>
<i>1.3. Production and Number of Harvested Plant of Duku by Province 2008</i>	<i>10</i>
<i>1.4. Production and Number of Harvested Plant of Durian by Province 2008</i>	<i>11</i>
<i>1.5. Production and Number of Harvested Plant of Guava by Province</i>	<i>12</i>
<i>1.6. Production and Number of Harvested Plant of Rose Apple by Province 2008</i>	<i>13</i>
<i>1.7. Production and Number of Harvested Plant of Orange (Orange/Tangerine + Pomelo) by Province 2008</i>	<i>14</i>
<i>1.7.1. Production and Number of Harvested Plant of Orange/Tangerine by Province 2008</i>	<i>15</i>
<i>1.7.2. Production and Number of Harvested Plant of Pomelo by Province 2008</i>	<i>16</i>
<i>1.8. Production and Number of Harvested Plant of Mango by Province 2008</i>	<i>17</i>

1.9.	Produksi dan Banyaknya Tanaman Manggis yang Menghasilkan Menurut Propinsi 2008	18	1.9.	<i>Production and Number of Harvested Plant of Mangosteen by Province 2008</i>	18
1.10.	Produksi dan Banyaknya Tanaman Nangka/Cempedak yang Menghasilkan Menurut Propinsi 2008	19	1.10.	<i>Production and Number of Harvested Plant of Jackfruit by Province 2008</i>	19
1.11.	Produksi dan Banyaknya Tanaman Nenas yang Menghasilkan Menurut Propinsi 2008.....	20	1.11.	<i>Production and Number of Harvested Plant of Pineapple by Province 2008.....</i>	20
1.12.	Produksi dan Banyaknya Tanaman Pepaya yang Menghasilkan Menurut Propinsi 2008	21	1.12.	<i>Production and Number of Harvested Plant of Papaya by Province 2008</i>	21
1.13.	Produksi dan Banyaknya Tanaman Pisang yang Menghasilkan Menurut Propinsi 2008	22	1.13.	<i>Production and Number of Harvested Plant of Banana by Province 2008</i>	22
1.14.	Produksi dan Banyaknya Tanaman Rambutan yang Menghasilkan Menurut Propinsi 2008	23	1.14.	<i>Production and Number of Harvested Plant of Rambutan by Province 2008</i>	23
1.15.	Produksi dan Banyaknya Tanaman Salak yang Menghasilkan Menurut Propinsi 2008	24	1.15.	<i>Production and Number of Harvested Plant of Salacca by Province 2008</i>	24
1.16.	Produksi dan Banyaknya Tanaman Sawo yang Menghasilkan Menurut Propinsi 2008	25	1.16.	<i>Production and Number of Harvested Plant of Sapodilla/ Star Apple by Province 2008</i>	25
1.17.	Produksi dan Banyaknya Tanaman Sirsak yang Menghasilkan Menurut Propinsi 2008	26	1.17.	<i>Production and Number of Harvested Plant of Soursop by Province 2008</i>	26
1.18.	Produksi dan Banyaknya Tanaman Markisa/Konyal yang Menghasilkan Menurut Propinsi 2008	27	1.18.	<i>Production and Number of Harvested Plant of Marquisa Fruit by Province 2008</i>	27
1.19.	Produksi dan Banyaknya Tanaman Sukun yang Menghasilkan Menurut Propinsi 2008	28	1.19.	<i>Production and Number of Harvested Plant of Breadfruit by Province 2008</i>	28
1.20.	Produksi dan Banyaknya Tanaman Apel yang Menghasilkan Menurut Propinsi 2008.....	29	1.20.	<i>Production and Number of Harvested Plant of Apple by Province 2008</i>	29
1.21.	Produksi dan Banyaknya Tanaman Anggur yang Menghasilkan Menurut Propinsi 2008	30	1.21.	<i>Production and Number of Harvested Plant of Grape by Province 2008</i>	30

1.22.	Produksi dan Banyaknya Tanaman Melinjo yang Menghasilkan Menurut Propinsi 2008.....	31
1.23.	Produksi dan Banyaknya Tanaman Petai yang Menghasilkan Menurut Propinsi 2008	32
1.24.	Produksi dan Banyaknya Tanaman Jengkol yang Menghasilkan Menurut Propinsi 2008	33
2.1.	Produksi Tanaman Buah-Buahan dan Sayuran Tahunan Triwulan I Tahun 1998 - 2008	34
2.2.	Produksi Tanaman Buah-Buahan dan Sayuran Tahunan Triwulan II Tahun 1998 - 2008	35
2.3.	Produksi Tanaman Buah-Buahan dan Sayuran Tahunan Triwulan III Tahun 1998 - 2008	36
2.4.	Produksi Tanaman Buah-Buahan dan Sayuran Tahunan Triwulan IV Tahun 1998 - 2008	37
2.5.	Produksi Tanaman Buah-Buahan dan Sayuran Tahunan Tahun 1998 - 2008	38
LAMPIRAN		
	Lampiran 1. Laporan Tanaman Buah-Buahan dan Sayuran Tahunan (SPH-BST)	39

1.22.	<i>Production and Number of Harvested Plant of Melinjo by Province 2008</i>	<i>31</i>
1.23.	<i>Production and Number of Harvested Plant of Twisted Cluster Bean by Province 2008</i>	<i>32</i>
1.24.	<i>Production and Number of Harvested Plant of Jengkol by Province 2008</i>	<i>33</i>
2.1.	<i>Production of Annual Fruit and Vegetable Plants First Quarter in 1998 - 2008.....</i>	<i>34</i>
2.2.	<i>Production of Annual Fruit and Vegetable Plants Second Quarter in 1998 - 2008</i>	<i>35</i>
2.3.	<i>Production of Annual Fruit and Vegetable Plants Third Quarter in 1998 - 2008</i>	<i>36</i>
2.4.	<i>Production of Annual Fruit and Vegetable Plants Fourth Quarter in 1998 - 2008</i>	<i>37</i>
2.5.	<i>Production of Annual Fruit and Vegetable Plants in 1998 - 2008</i>	<i>38</i>
APPENDIX		
	<i>Appendix 1. Report on Annual Fruits and Vegetables Plants (SPH-BST).....</i>	<i>39</i>

PENJELASAN

1. PENDAHULUAN

Survei Pertanian diselenggarakan oleh Badan Pusat Statistik (BPS) bekerjasama dengan Direktorat Jenderal Hortikultura. Landasan hukum pelaksanaan survei dan pengolahan hasil-hasilnya adalah :

- a. Undang-undang Nomor 16 tahun 1997.
- b. Peraturan Pemerintah Nomor 51 Tahun 1999.
- c. Keputusan Menteri Pertanian Nomor 527/Kpts/DP/1970 tanggal 9 November 1970.
- d. Keputusan Menteri Pertanian Nomor 511/Kpts/PD.310/9/2006.
- e. Instruksi Menteri Ekonomi, Keuangan dan Industri Nomor IN/05/MEKUIIN/73 tanggal 23 Januari 1973.
- f. Instruksi Menteri Dalam Negeri Nomor 3 tahun 1973.
- g. Instruksi bersama Direktur Jendral Pertanian Tanaman Pangan dan Kepala Biro Pusat Statistik Nomor SK 47/DPP/XI/1972 tanggal 20 November 1972.
- h. Instruksi bersama Direktur Jendral Pertanian Tanaman Pangan dan Kepala Biro Pusat Statistik Nomor 20/DJPTP/VI/1975,
P.2/1/II/1975
Tanggal 23 Juni 1975.
- i. Instruksi bersama Direktur Jendral Pertanian Tanaman Pangan dan Kepala Biro Pusat Statistik Nomor LHK.050.84.86,
04110.0288
Tanggal 17 Desember 1984.
- j. Naskah Kesepakatan Bersama No. 443/TU-010/A/5/06 tahun 2006
I/V/KS/2006
antara Departemen Pertanian dan Badan Pusat Statistik.

EXPLANATORY NOTES

1. INTRODUCTION

Agricultural survey is carried out by the BPS – Statistics Indonesia in cooperation with the Directorate General of Horticulture. The survey is based on the following law foundations :

- a. *Statistics Law No. 16, 1997.*
- b. *Government Regulation No. 51, 1999.*
- c. *The Agricultural Minister Decree No. 527/Kpts/DP/1970 November 9,1970.*
- d. *The Agricultural Minister Decree No. 511/Kpts/PD.310/9/2006.*
- e. *The Instruction of Minister of Economics, Finance and Industry No. IN/05/MEKUIIN/73, January 23, 1973.*
- f. *The Instruction of Minister of Home Affairs No. 3 of 1973.*
- g. *The Instruction of Director General of Food Crops and Director General of the Central Bureau of Statistics No. SK. 47/DPP/XI/1972, November 20, 1972.*
- h. *The Instruction of Director General of Food Crops and Director General of Central Bureau of Statistics No. 20/DJPTP/VI/1975, P.2/1/II/1975 June 23, 1975*
- i. *The Instruction of Director General of Food Crops and Director General of Central Bureau of Statistics No. LHK.050.84.86, 04110.0288 December 17, 1984.*
- j. *Memorandum of Understanding between Agricultural Department and BPS-Statistics Indonesia No. 443/TU-010/A/5/06 , 2006. I/V/KS/2006*

2. DATA YANG DIKUMPULKAN

Dalam Survei Pertanian dikumpulkan data tentang banyaknya tanaman yang menghasilkan dan produksi buah-buahan dan sayuran tahunan.

3. METODOLOGI

Pada dasarnya metode yang dipakai untuk survei ini adalah metode pencacahan lengkap terhadap seluruh kecamatan di Indonesia. Pengumpulan data mencakup banyaknya tanaman dan produksi buah-buahan, dilakukan secara rutin triwulanan.

4. DOKUMEN YANG DIGUNAKAN

Daftar yang digunakan dalam pengumpulan data adalah :

Jenis	Uraian	Frekuensi Pengumpulan
SPH-BST	Laporan Tanaman Buah-buahan dan Sayuran Tahunan	Triwulanan

5. ORGANISASI PENGUMPULAN DATA

Laporan tanaman buah-buahan dan sayuran tahunan diisi Triwulanan oleh KCD/Mantri Tani dan dibuat dalam rangkap 4 (empat). Aslinya dikirimkan kepada Badan Pusat Statistik, tembusannya dikirimkan ke BPS Propinsi, Dinas Pertanian Tanaman Pangan Kabupaten/Kota dan arsip petugas.

2. THE INFORMATION COLLECTED

Agricultural survey collects information on the number of trees planted and production of annual fruits and vegetables.

3. METHODOLOGY

The method used in data collection is a complete enumeration. The data are collected quarterly for annual fruits and vegetables.

4. DOCUMENTS USED

The questionnaire used to collect the data are :

Type	Description	Frequency of collection
SPH-BST	Report on Annual Fruits and Vegetables	Quarterly

5. ORGANIZATION OF DATA COLLECTION

The report on annual fruits and vegetables are fulfilled quarterly by the agricultural Extension Service each in 4 (four) copies. The original copy sent to the BPS Statistics Indonesia, while the others are sent to the Provincial Statistical office, the Food Crops Extension Service at Regency/Municipality and archiveres.

6. PENGOLAHAN

Penerbitan ini merupakan hasil pengolahan kuesioner SPH-BST (triwulanan) yang dikumpulkan dari setiap kecamatan pada tahun 2008. Data tingkat propinsi merupakan rekapitulasi angka tingkat kabupaten/kota.

7. KONSEP DAN DEFINISI

Konsep dan definisi yang disajikan hanya mencakup hal-hal yang sesuai dengan karakteristik yang ditanyakan dalam SPH-BST (Laporan tanaman buah-buahan dan sayuran tahunan).

Tanaman buah-buahan dan sayuran tahunan :

1. **Tanaman buah-buahan tahunan** adalah tanaman sumber vitamin, garam mineral dan lain-lain yang dikonsumsi dari bagian tanaman yang berupa buah dan merupakan tanaman tahunan.

Buah-buahan tahunan yang dilaporkan adalah :

1. Alpukat
2. Belimbing
3. Duku/Langsat/Kokosan
4. Durian
5. Jambu Biji
6. Jambu Air
7. Jeruk Siam/Kepron
8. Jeruk Besar
9. Mangga
10. Manggis
11. Nangka/Cempedak
12. Nenas
13. Pepaya

6. PROCESSING

This publication is as result of computation SPH-BST (quarterly) from each district in 2008. The Provincial figure is obtained by summing up the regency/municipality figures.

7. CONCEPTS AND DEFINITION

The concepts and definition used in this publication refer to the characteristics which are collected in SPH-BST (Report on annual fruit and vegetable plants)

Annual Fruit and vegetables:

1. **Annual Fruit plants** are vitamin source plants, contained mineral salt, etc., which are consumed from plant part in the form of fruits and more than one year of age.

The annual fruits which are reported, are :

1. Avocado
2. Starfruit
3. Duku
4. Durian
5. Guava
6. Rose Apple
7. Orange/Tangerine
8. Pomelo
9. Mango
10. Mangosteen
11. Jackfruit
12. Pineapple
13. Papaya

14. Pisang
15. Rambutan
16. Salak
17. Sawo
18. Sirsak
19. Markisa
20. Sukun
21. Apel
22. Anggur

2. **Tanaman sayuran tahunan** adalah tanaman sumber vitamin, garam, mineral dan lain-lain yang dikonsumsi dari bagian tanaman yang berupa daun, bunga, buah dan umbinya yang berumur lebih dari satu tahun serta berbentuk pohon.

Sayuran tahunan yang dilaporkan adalah :

1. Melinjo
2. Petai
3. Jengkol

3. **Tanaman yang menghasilkan** adalah tanaman yang pada triwulan yang bersangkutan dipetik hasilnya.

4. **Bentuk Produksi**

Bentuk produksi buah-buahan dinyatakan dalam buah segar. Khusus untuk pisang dihitung dengan tandan dan nenas dengan mahkotanya (jambul).

14. *B a n a n a*
15. *Rambutan*
16. *Salacca*
17. *Sapodilla/Star Apple*
18. *Soursop*
19. *Marquisa*
20. *Breadfruit*
21. *Apple*
22. *Grape*

2. ***Annual vegetable plants*** are vitamin source plants, contained mineral, salt, etc, which are consumed from plants part in the form of vegetables and more than one year of age.

The annual vegetables which are reported are :

1. *Melinjo*
2. *Twisted Cluster Bean*
3. *Jengkol*

3. ***Harvested plant*** are plant that are harvested at the reporting quarter

4. ***Form of production***

Form of production are expressed as fresh fruits, except for banana, which are reported in bunch and pineapple with crown.

RINGKASAN

Tanaman Buah-Buahan Tahunan

Beberapa komoditas buah-buahan mengalami peningkatan produksi pada tahun 2008 bila di bandingkan dengan tahun 2007, yaitu: Alpukat, Belimbing, Durian, Jambu Biji, Jambu Air, Jeruk Besar, Mangga, Nangka/Cempedak, Nenas, Pepaya, Pisang, Rambutan, Salak, Sawo, Markisa dan Sukun. Sedangkan produksi komoditas lain mengalami penurunan produksi, diantaranya adalah Duku/Langsak/Kokosan, Jeruk Siam/Kepron, Manggis dan Sirsak.

Pada tahun 2008 terdapat penambahan 2 komoditas tanaman buah-buahan tahunan yaitu apel dan anggur.

Tabel 1. Produksi Tanaman Buah-Buahan Tahunan Tahun 2007 dan 2008

No.	Komoditi	Produksi (ton)	
		2007	2008
(1)	(2)	(3)	(4)
1	Alpukat	201.635	244.215
2	Belimbing	59.984	72.397
3	Duku/Langsak/Kokosan	178.026	158.649
4	Durian	594.842	682.323
5	Jambu Biji	179.474	212.260
6	Jambu Air	94.015	111.495
7	Jeruk Siam/Kepron	2.551.635	2.391.011
8	Jeruk Besar	74.249	76.621
9	Mangga	1.818.619	2.105.085
10	Manggis	112.722	78.674
11	Nangka/Cempedak	601.929	675.455
12	Nenas	1.395.566	1.433.133
13	Pepaya	621.524	717.899
14	Pisang	5.454.226	6.004.615
15	Rambutan	705.823	978.259
16	Salak	805.879	862.465
17	Sawo	101.263	120.649
18	Sirsak	55.798	55.042
19	Markisa	106.788	138.027
20	Sukun	92.014	113.778
21	Apel	-	160.794
22	Anggur	-	21.970

SUMMARY

Annual Fruit Plants

Some of production of annual fruits increased in 2008 compared to 2007, there were: Avocado, Star Fruit, Durian, Guava, Rose Apple, Pomelo, Mango, Jackfruit, Pineapple, Papaya, Banana, Rambutan, Salacca, Sapodilla/Star Apple, Marquisa and Breadfruit. While the others of production of annual fruit decreased, there were: Duku, Orange/Tangerine, Mangosteen and Soursop.

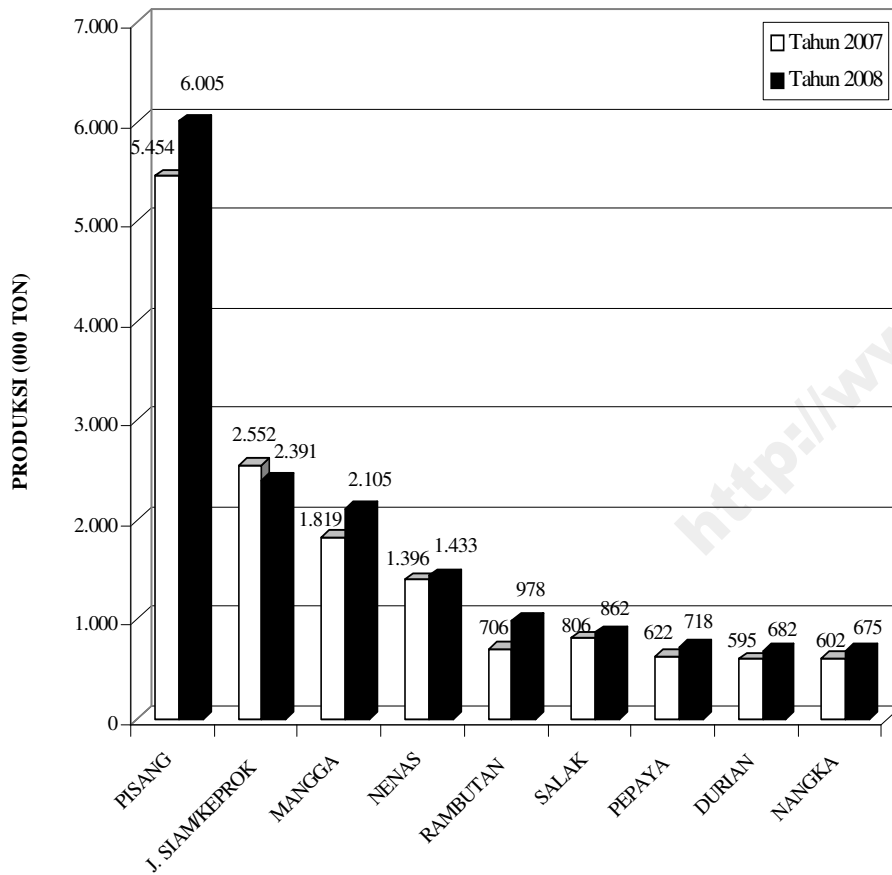
In 2008 it includes 2 commodities of annual fruit which are apple and grape.

Table 1. Production of Annual Fruit Plants in 2007 and 2008

No.	Commodity	Productions (Tons)	
		2007	2008
(1)	(2)	(3)	(4)
1	Avocado	201.635	244.215
2	Star Fruit	59.984	72.397
3	Duku	178.026	158.649
4	Durian	594.842	682.323
5	Guava	179.474	212.260
6	Rose Apple	94.015	111.495
7	Orange/Tangerine	2.551.635	2.391.011
8	Pomelo	74.249	76.621
9	Mango	1.818.619	2.105.085
10	Mangosteen	112.722	78.674
11	Jackfruit	601.929	675.455
12	Pineapple	1.395.566	1.433.133
13	Papaya	621.524	717.899
14	Banana	5.454.226	6.004.615
15	Rambutan	705.823	978.259
16	Salacca	805.879	862.465
17	Sapodilla/Star Apple	101.263	120.649
18	Soursop	55.798	55.042
19	Marquisa	106.788	138.027
20	Breadfruit	92.014	113.778
21	Apple	-	160.794
22	Grape	-	21.970

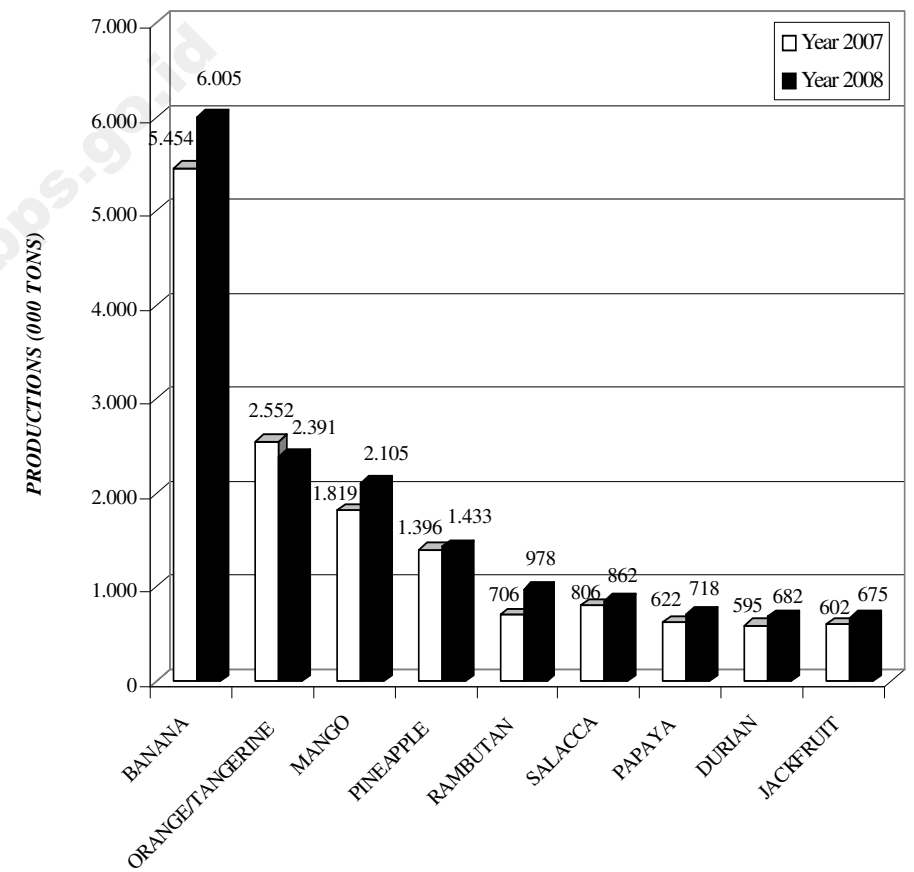
Produksi buah di Indonesia tahun 2008 yang berpotensi dari aspek produksi karena mempunyai sumbangan kumulatif hingga 92 persen terhadap total produksi Nasional meliputi tanaman: Pisang, Jeruk Siam/Kepron, Mangga, Nenas, Rambutan, Salak, Pepaya, Durian, dan Nangka/Cempedak.

Gambar 1. Produksi Tanaman Buah Potensi Tahun 2007 dan 2008



The potential fruit production of Indonesia in 2008 which share up to 92 percent of total national production are: Banana, Orange/Tangerine, Mango, Pineapple, Rambutan, Salacca, Papaya, Durian and Jackfruit.

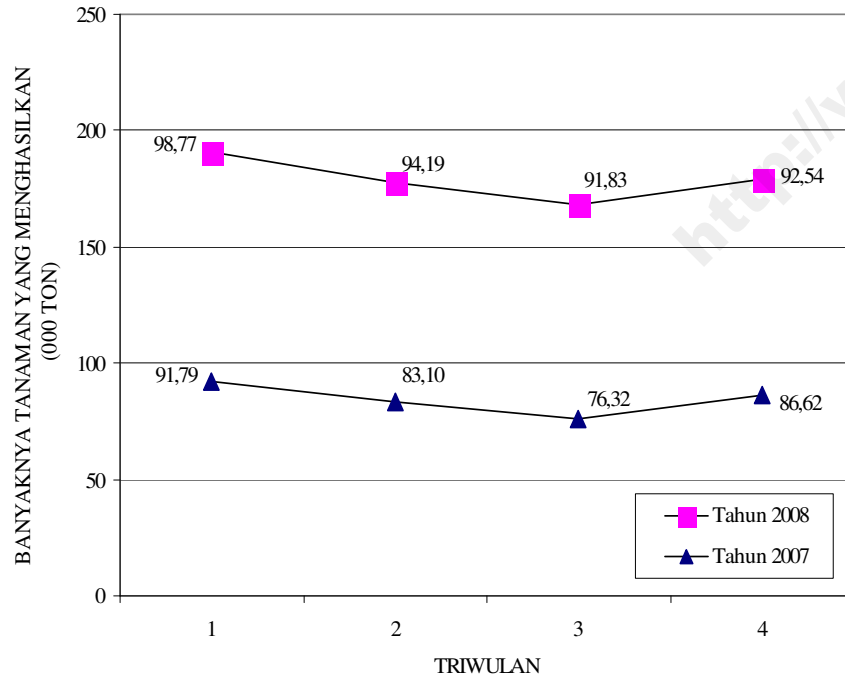
Figure 1. Production of Potential Fruit in 2007 and 2008



Tanaman pisang merupakan tanaman yang memberikan kontribusi terbesar terhadap total produksi nasional. Produksi pisang tahun 2008 sebesar 6 juta ton yang sebagian besar terdapat di pulau Jawa yang mencapai 56,69 persen atau 3,40 juta ton. Bila dilihat sebaran propinsinya, penghasil pisang terbanyak terdapat di propinsi Jawa Barat sebesar 1,31 juta ton, Propinsi Jawa Timur sebesar 1,08 juta ton dan Jawa Tengah sebesar 831 ribu ton. Jika dibandingkan tahun 2007 produksi Pisang nasional tahun 2008 mengalami peningkatan sekitar 10,09 persen.

Tanaman Pisang merupakan tanaman yang berbuah sepanjang tahun dan tidak mengenal musim. Hal ini dapat dilihat dari pola banyaknya tanaman yang menghasilkan untuk masing-masing triwulan yang relatif konstan dan paling sedikit terjadi pada triwulan III (Juli-September).

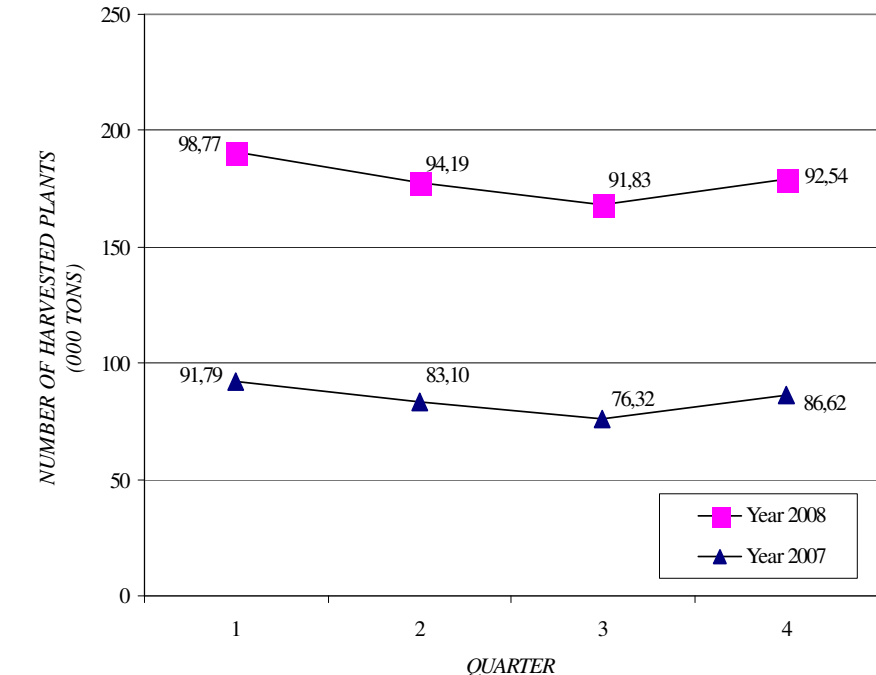
Gambar 2. Sebaran Banyaknya Tanaman Pisang Yang Menghasilkan Menurut Triwulan, Tahun 2007 dan 2008 (dalam Juta Rumpun)



Banana is plants that giving the biggest contribution of total national production. Production of banana in 2008 was 6.00 millions tons which most of them were in Jawa island with contribution of 56.69 percent or 3.40 millions tons. Distribution by province shows that Jawa Barat produced about 1.31 millions tons banana, followed by Jawa Timur about 1.08 millions thousands tons and Jawa Tengah about 831 thousands tons. Compared to 2007, production of banana in 2008 increased about 10.09 percent.

Banana is one of the annual plants which can be harvested in the whole year and it do not depend on the season. It is shown from the number of harvested plant are relatively constant for every quarter and smallest in the third quarter (July-September).

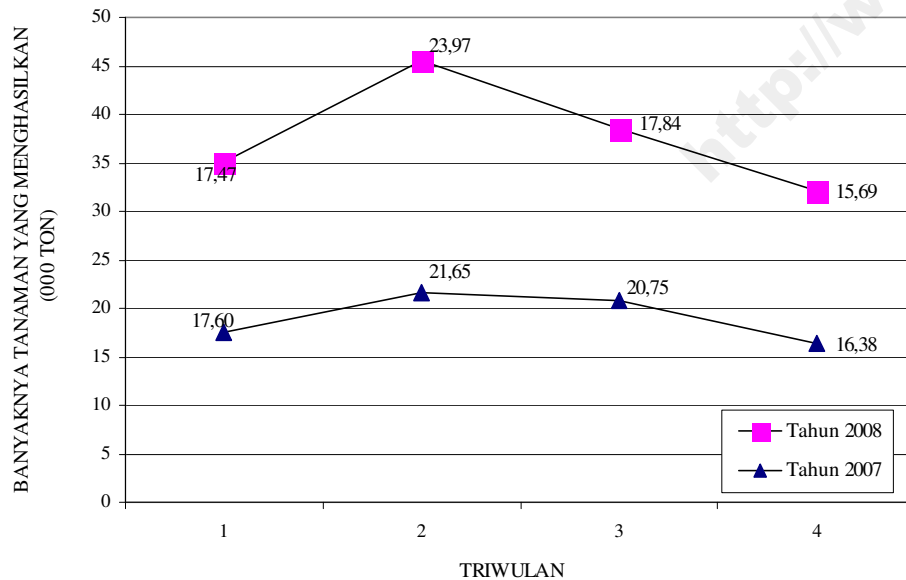
Figure 2. Distribution of Number of Harvested Plant of Banana in 2007 and 2008 (in Millions Clump)



Produksi jeruk siam/keprok pada tahun 2008 sebesar 2,39 juta ton merupakan tanaman yang menghasilkan produksi terbesar kedua setelah tanaman pisang. Pulau Sumatera merupakan pulau penghasil jeruk siam/keprok terbanyak yaitu sebesar 1,1 juta ton (46,06 persen) bila ditinjau dari sebaran per pulau. Sedangkan bila dilihat dari sebaran per propinsinya, propinsi Sumatera Utara merupakan penghasil jeruk siam/keprok terbesar dengan produksinya yang mencapai 856 ribu ton, kemudian diikuti propinsi Jawa Timur dengan produksi sebesar 496 ribu ton dan propinsi Sulawesi Barat sebesar 298 ribu ton. Produksi jeruk siam/keprok nasional tahun 2008 menurun 6,29 persen jika dibandingkan tahun 2007.

Tanaman jeruk siam/keprok juga merupakan tanaman tahunan yang berbuah sepanjang tahun seperti halnya tanaman pisang. Banyaknya tanaman yang menghasilkan tahun 2008 meningkat lebih tajam pada triwulan II (April - Juni) Sedangkan untuk triwulan I (Januari - Maret), triwulan III (Juli - September) dan triwulan IV (Oktober - Desember) relatif konstan.

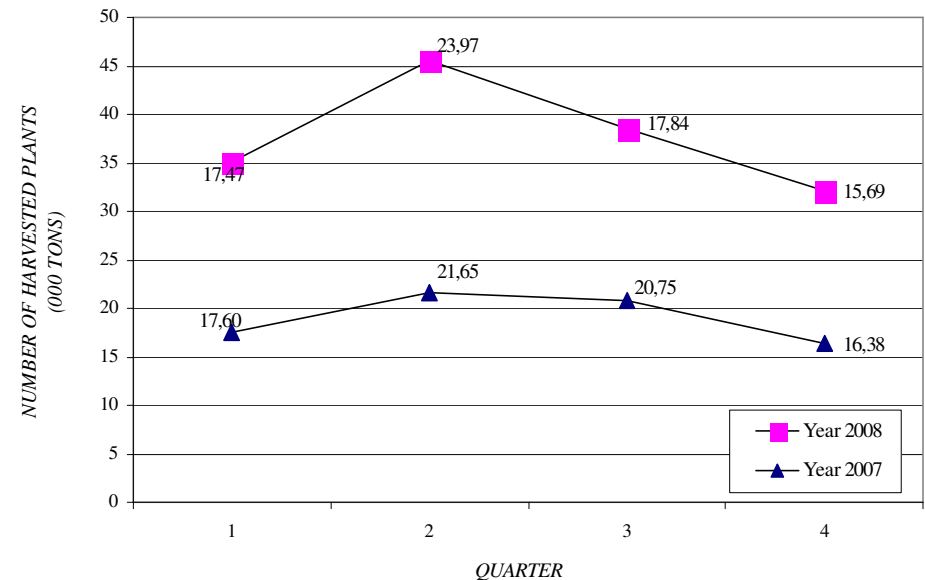
Gambar 3. Sebaran Banyaknya Tanaman Jeruk Siam/Keprok Yang Menghasilkan Menurut Triwulan, Tahun 2007 dan 2008 (dalam Juta Pohon)



Productions of orange/tangerine in 2008 is about 2.39 millions tons which is the second largest productions after banana. Sumatera island is the biggest orange/tangerine producer which has productions as 1.1 millions tons (46.06 percent) based on distribution by island. Whereas distributions by province shows that Sumatera Utara is the biggest orange/tangerine producer which production reached 856 thousands tons, then followed by Jawa Timur with production about 496 thousands tons and Sulawesi Barat as the third province which produced about 298 thousands tons. The production of orange/tangerine in 2008 decreased about 6.29 percent compared to production in 2007.

Orange/tangerine is annual plants which can be harvested in the whole year similar to banana. The number of harvested plant in 2008 increased sharply in the second quarter (April-June). While for the first quarter (January - March), third quarter (July - September) and fourth quarter (October- December) are relatively constant.

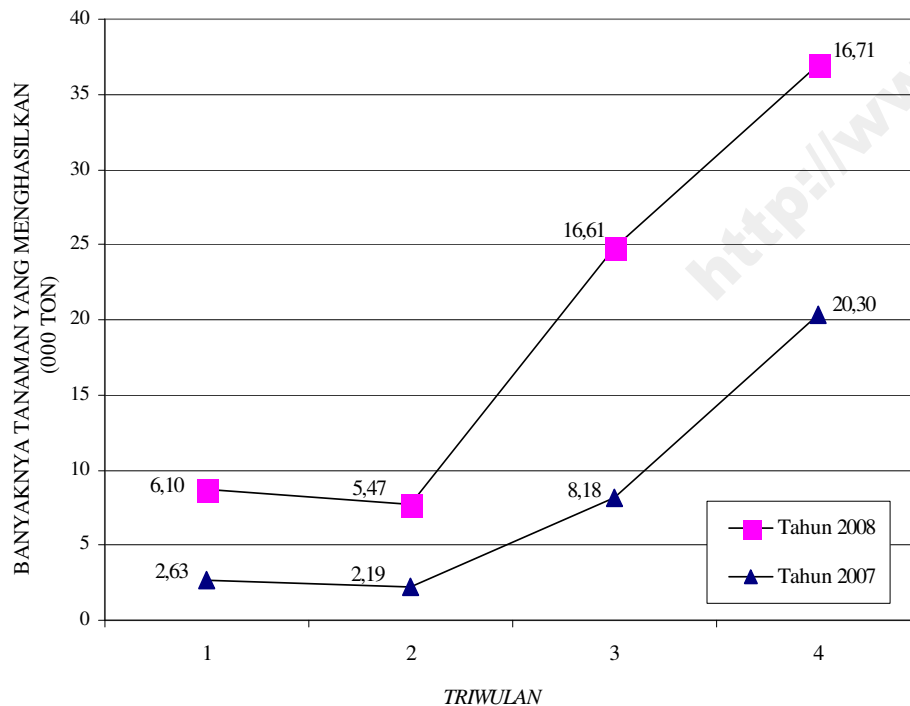
Figure 3. Distribution of Number of Harvested Plant of Orange/Tangerine in 2007 and 2008 (in Millions Plant)



Penghasil urutan ketiga tanaman buah-buahan tahunan adalah tanaman mangga. Produksi mangga tahun 2008 sebesar 2,11 juta ton. Pulau Jawa merupakan penghasil mangga terbesar dengan produksinya yang mencapai 1,58 juta ton atau 74,9 persen. Mangga banyak terdapat di propinsi Jawa Timur, Jawa Barat dan Jawa Tengah yang masing-masing menghasilkan produksi sebesar 692 ribu ton, 475 ribu ton dan 349 ribu ton. Tanaman mangga juga mengalami peningkatan produksi pada tahun 2008, yaitu meningkat 15,75 persen dibandingkan tahun 2007.

Banyaknya tanaman yang menghasilkan tertinggi terdapat pada triwulan IV (Oktober – Desember) yang biasanya disebut musim panen. Tanaman mangga merupakan tanaman yang berbuah sepanjang musim.

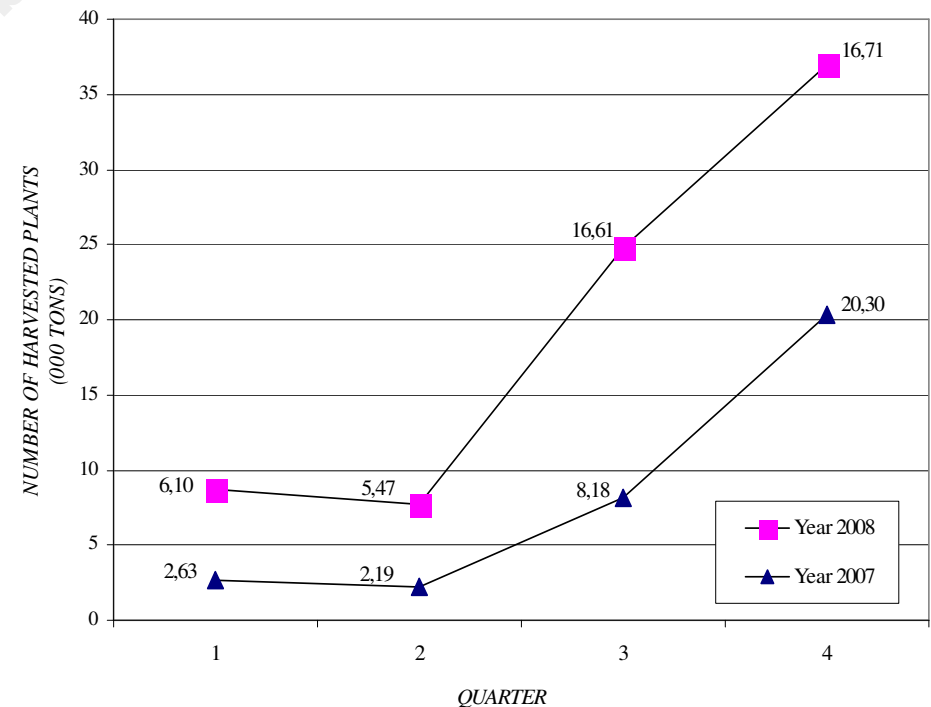
Gambar 4. Sebaran Banyaknya Tanaman Mangga yang Menghasilkan Menurut Triwulan, Tahun 2007 dan 2008 (dalam Juta Pohon).



The third biggest production of annual fruit is mango. Production of mango in 2008 is 2.11 millions tons. Jawa island is the biggest mango producer which produced about 1.58 millions tons or 74.9 percent. Mango is planted more in Jawa Timur, Jawa Barat and Jawa Tengah which produced 692 thousands tons, 475 thousands tons and 349 thousands tons, respectively. The production of mango also increased in 2008, it increased about 15.75 percent compared to 2007.

The highest number of harvested plant is in the fourth quarter (October-December) which is usually called as harvested season. Mango is annual plants and can be harvested during the season.

Figure 4. Distibution of Number of Harvested Plant of Mango in 2007 and 2008 (in Millions Plant)



Tanaman Sayuran Tahunan

Cakupan tanaman sayuran tahunan pada tahun 2008 diperluas dengan adanya tambahan 1 (satu) komoditas yaitu tanaman jengkol.

Tabel 2 memperlihatkan produksi tanaman sayuran tahunan yang terdiri dari melinjo, petai dan jengkol. Produksi melinjo tahun 2008 mengalami peningkatan sebesar 24,9 ribu ton atau 12,11 persen jika dibandingkan tahun 2007. Sedangkan produksi petai tahun 2008 mengalami kenaikan sebesar 34,9 ribu ton atau 19,51 persen jika dibandingkan tahun sebelumnya .

Tabel 2. Produksi Tanaman Sayuran Tahunan Tahun 2007 dan 2008

No	Komoditi	Produksi (ton)	
		2007	2008
(1)	(2)	(3)	(4)
1.	Melinjo	205.728	230.654
2.	Petai	178.680	213.536
3.	Jengkol	-	80.008

Tanaman Melinjo menyebar hampir di seluruh Indonesia kecuali di Propinsi Sulawesi Barat tahun 2008. Produksi Melinjo terbesar ada di delapan propinsi dengan total persentase produksi terhadap produksi nasional mencapai 89,05 persen. Sumbangan terbesar menurut propinsi secara berturut-turut adalah: Propinsi Jawa Barat sebesar 25,25 persen, Propinsi Jawa Tengah sebesar 21,61 persen, Propinsi Banten sebesar 11,29 persen, Propinsi D.I. Yogyakarta sebesar 11,04 persen, Propinsi Jawa Timur sebesar 8,25 persen, Propinsi Lampung sebesar 4,54 persen, Propinsi Nanggroe Aceh Darussalam sebesar 3,63 persen dan Propinsi Sumatera Barat sebesar 3,44 persen.

Annual Vegetable Plants

Coverage of annual vegetable plants in 2008 is wider including 1 (one) commodity that is Jengkol.

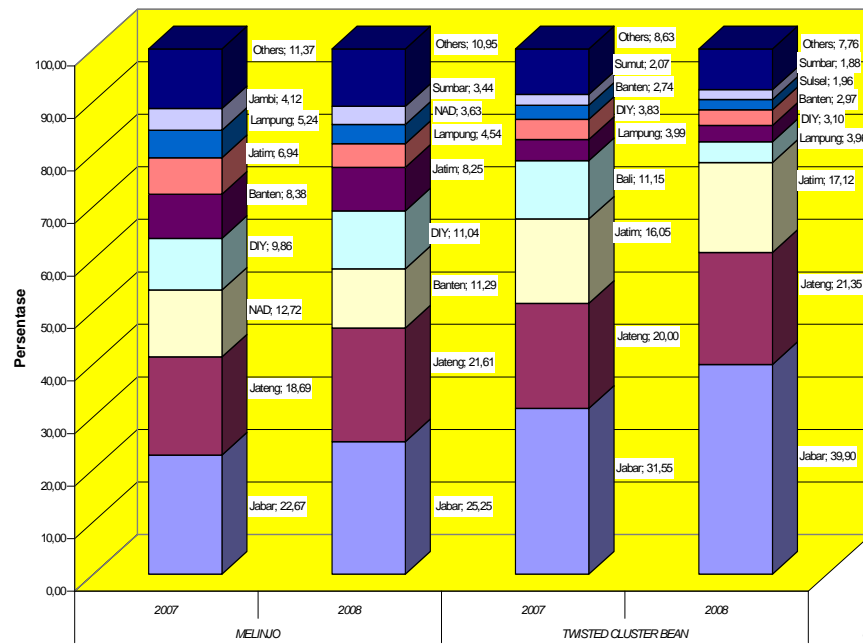
Table 2 shows that the production of annual vegetable plants covered of Melinjo, Twisted Cluster Bean and Jengkol. Production of Melinjo increased about 24.9 thousands tons or 12.11 percent in 2008 compared to 2007. Meanwhile, in the year 2008 the production of Twisted Cluster Bean increased by 34.9 thousands tons or 19.51 percent compared to the previous year.

Table 2. Production of Annual Vegetable Plants in 2007 and 2008

No	Commodity	Production (tons)	
		2007	2008
(1)	(2)	(3)	(4)
1.	Melinjo	205.728	230.654
2.	Twisted Cluster Bean	178.680	213.536
3.	Jengkol	-	80.008

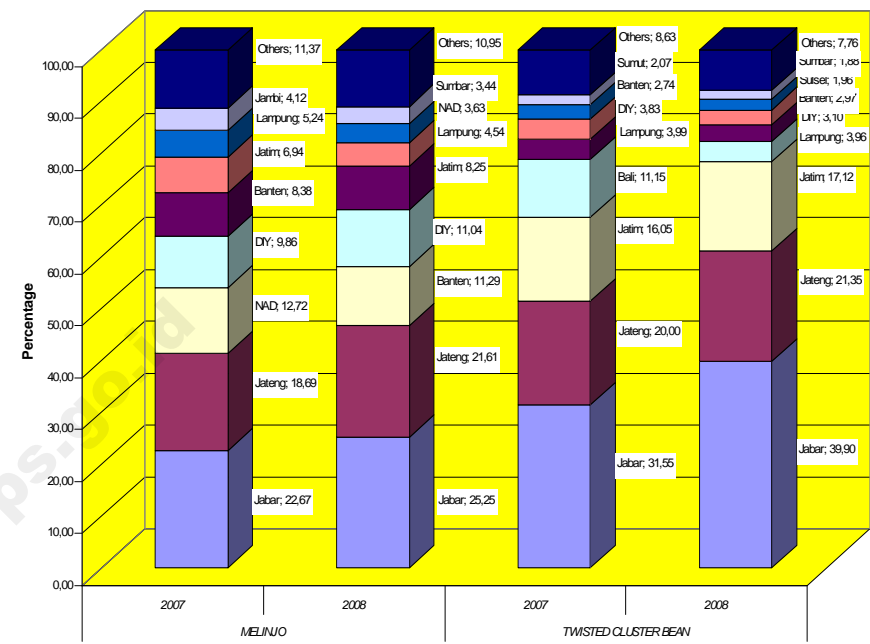
Melinjo is distributed around Indonesia except in Province Sulawesi Barat 2008. The biggest production of Melinjo is found in eight provinces with production reach out 89.05 percent. The biggest contributor for production producer of Melinjo are: Jawa Barat as 25.25 percent, Jawa Tengah as 21.61 percent, Banten as 11.29 percent, D.I. Yogyakarta as 11.04 percent, Jawa Timur as 8.25 percent, Lampung as 4.54 percent, Nanggroe Aceh Darussalam as 3.63 percent and Sumatera Barat as 3.44 percent

Gambar 5. Sebaran Produksi Melinjo dan Petai di Indonesia Tahun 2007 dan 2008



Produksi Petai terbesar ada di delapan propinsi dengan total persentase produksi terhadap produksi nasional mencapai 92,24 persen. Sumbangan terbesar menurut propinsi secara berturut-turut adalah: Propinsi Jawa Barat sebesar 39,90 persen, Propinsi Jawa Tengah sebesar 21,35 persen, Propinsi Jawa Timur sebesar 17,12 persen, Propinsi Lampung sebesar 3,96 persen, Propinsi D.I. Yogyakarta 3,10 persen, Propinsi Banten sebesar 2,97 persen, Propinsi Sulawesi Selatan sebesar 1,96 persen dan Propinsi Sumatera Barat sebesar 1,88 persen.

Figure 5. Production Distribution of Melinjo and Twisted Cluster Bean in Indonesia, 2007 and 2008



The biggest production of Twisted Cluster Bean found in eight provinces with production reach out 92.24 percent. The biggest contributor for production of Twisted Cluster Bean are: Jawa Barat as 39.90 percent, Jawa Tengah as 21.35 percent, Jawa Timur as 17.12 percent, Lampung as 3.96 percent, D.I. Yogyakarta as 3.10 percent, Banten as 2.97 percent, Sulawesi Selatan as 1.96 percent and Sumatera Barat as 1.88 percent.

Tabel 1.1. Produksi dan Banyaknya Tanaman Alpukat yang Menghasilkan Menurut Propinsi 2008
Table 1.1. Production and Number of Harvested Plant of Avocado by Province 2008

Propinsi Province	Triwulan I / Qtr I		Triwulan II / Qtr II		Triwulan III / Qtr III		Triwulan IV / Qtr IV		Total Produksi Total Production (ton)
	Tanaman yang menghasilkan Harvested Plant (Pohon/tree)	Produksi Production (ton)	Tanaman yang menghasilkan Harvested Plant (Pohon/tree)	Produksi Production (ton)	Tanaman yang menghasilkan Harvested Plant (Pohon/tree)	Produksi Production (ton)	Tanaman yang menghasilkan Harvested Plant (Pohon/tree)	Produksi Production (ton)	
(1)	(2)	(3)	(4)	(5)	(6)	(7)	(8)	(9)	(10)
1 Nanggroe Aceh Darussalam	21.589	427	12.727	418	23.560	405	4.467	136	1.386
2 Sumatera Utara	38.079	2.043	38.551	1.938	43.332	2.268	52.470	2.844	9.093
3 Sumatera Barat	110.438	4.452	118.317	8.247	126.331	8.191	123.100	8.225	29.115
4 R i a u	3.847	75	3.910	97	3.155	102	3.113	84	358
5 J a m b i	28.345	1.408	20.101	1.078	19.491	1.111	23.485	1.146	4.743
6 Sumatera Selatan	35.714	1.791	22.350	602	18.955	805	16.442	521	3.719
7 Bengkulu	11.835	687	16.981	890	18.200	1.076	14.582	725	3.378
8 Lampung	68.207	3.454	58.582	3.127	60.327	3.335	71.595	3.035	12.951
9 Bangka Belitung	2.347	71	2.341	93	1.168	65	1.541	96	325
10 Kepulauan Riau	838	12	930	13	1.340	19	655	9	53
SUMATERA	321.239	14.420	294.790	16.503	315.859	17.377	311.450	16.821	65.121
11 DKI Jakarta	849	23	614	15	256	7	340	5	50
12 Jawa Barat	381.547	20.022	233.664	11.269	220.736	10.168	315.581	30.865	72.324
13 Jawa Tengah	129.707	7.108	34.438	1.285	106.358	4.492	238.711	10.131	23.016
14 DI Yogyakarta	32.492	1.765	5.823	104	41.341	682	40.729	1.565	4.116
15 Jawa Timur	435.663	16.709	152.153	4.320	123.837	3.488	445.747	15.965	40.482
16 B a n t e n	4.109	128	3.322	80	2.859	76	5.132	138	422
J A W A	984.367	45.755	430.014	17.073	495.387	18.913	1.046.240	58.669	140.410
17 B a l i	16.886	527	6.246	306	1.794	68	16.661	531	1.432
18 Nusa Tenggara Barat	12.418	341	1.821	78	3.586	52	6.463	101	572
19 Nusa Tenggara Timur	150.825	3.711	122.245	3.729	76.216	1.743	85.502	2.362	11.545
BALI DAN NUSA TENGGARA	180.129	4.579	130.312	4.113	81.596	1.863	108.626	2.994	13.549
20 Kalimantan Barat	2.320	128	212	12	1.023	70	1.827	72	282
21 Kalimantan Tengah	486	14	633	17	461	9	492	18	58
22 Kalimantan Selatan	287	7	290	13	407	15	309	7	42
23 Kalimantan Timur	5.570	199	6.810	132	2.830	88	3.551	105	524
KALIMANTAN	8.663	348	7.945	174	4.721	182	6.179	202	906
24 Sulawesi Utara	36.885	1.431	11.270	215	19.446	1.297	32.548	1.599	4.542
25 Sulawesi Tengah	7.106	238	8.881	216	6.195	223	19.167	577	1.254
26 Sulawesi Selatan	223.636	9.674	179.900	2.461	125.287	1.856	131.859	1.827	15.818
27 Sulawesi Tenggara	1330	85	1159	46	1042	20	1269	41	192
28 Gorontalo	567	11	338	7	520	8	782	12	38
29 Sulawesi Barat	2.651	202	2.940	227	3.712	363	3.570	356	1.148
SULAWESI	272.175	11.641	204.488	3.172	156.202	3.767	189.195	4.412	22.992
30 M a l u k u	1.740	76	1.093	63	597	29	938	39	207
31 Maluku Utara	5.418	83	5.416	81	-	-	5.425	83	247
32 Papua Barat	9.953	140	9.112	121	9.353	149	9.238	130	540
33 P a p u a	1.587	22	3.324	48	1.243	13	10.588	160	243
MALUKU DAN PAPUA	18.698	321	18.945	313	11.193	191	26.189	412	1.237
I N D O N E S I A	1.785.271	77.064	1.086.494	41.348	1.064.958	42.293	1.687.879	83.510	244.215

Tabel 1.2. **Produksi dan Banyaknya Tanaman Belimbing yang Menghasilkan Menurut Propinsi 2008**
Table *Production and Number of Harvested Plant of Star Fruit by Province 2008*

Propinsi Province	Triwulan I / Qtr I		Triwulan II / Qtr II		Triwulan III / Qtr III		Triwulan IV / Qtr IV		Total Produksi Total Production (ton)
	Tanaman yang menghasilkan Harvested Plant (Pohon/tree)	Produksi Production (ton)	Tanaman yang menghasilkan Harvested Plant (Pohon/tree)	Produksi Production (ton)	Tanaman yang menghasilkan Harvested Plant (Pohon/tree)	Produksi Production (ton)	Tanaman yang menghasilkan Harvested Plant (Pohon/tree)	Produksi Production (ton)	
(1)	(2)	(3)	(4)	(5)	(6)	(7)	(8)	(9)	(10)
11 Nanggroe Aceh Darussalam	14.360	366	12.368	305	8.257	233	11.338	345	1.249
12 Sumatera Utara	50.112	967	53.379	1.028	43.598	2.560	39.948	2.261	6.816
13 Sumatera Barat	4.015	93	4.387	120	4.129	103	4.427	115	431
14 R i a u	8.305	133	8.872	165	8.370	167	8.129	173	638
15 J a m b i	5.507	94	4.561	85	4.696	81	5.696	111	371
16 Sumatera Selatan	33.937	840	18.751	338	18.985	393	21.850	433	2.004
17 Bengkulu	3.549	84	3.892	90	4.828	117	4.747	106	397
18 Lampung	24.191	657	21.182	568	23.793	602	20.865	474	2.301
19 Bangka Belitung	1.567	29	1.497	28	955	24	1.451	29	110
21 Kepulauan Riau	816	11	477	7	509	7	327	5	30
SUMATERA	146.359	3.274	129.366	2.734	118.120	4.287	118.778	4.052	14.347
31 DKI Jakarta	80.230	1.234	74.865	986	71.179	957	11.304	187	3.364
32 Jawa Barat	101.714	4.321	74.635	3.584	79.281	3.357	82.277	4.370	15.632
33 Jawa Tengah	167.868	3.392	155.027	2.962	157.088	3.115	156.902	3.079	12.548
34 DI Yogyakarta	12.534	197	6.028	84	15.625	251	11.382	188	720
35 Jawa Timur	199.747	3.876	166.769	3.094	200.920	4.150	198.285	4.408	15.528
36 B a n t e n	15.607	293	16.174	271	15.894	278	16.208	354	1.196
J A W A	577.700	13.313	493.498	10.981	539.987	12.108	476.358	12.586	48.988
51 B a l i	8.019	157	5.308	141	5.324	134	9.832	163	595
52 Nusa Tenggara Barat	7.971	154	2.842	91	3.822	70	2.822	55	370
53 Nusa Tenggara Timur	7.688	191	8.073	148	9.243	219	6.789	184	742
BALI DAN NUSA TENGGARA	23.678	502	16.223	380	18.389	423	19.443	402	1.707
61 Kalimantan Barat	8.298	147	6.445	116	6.024	107	7.210	159	529
62 Kalimantan Tengah	11.218	225	9.642	164	9.246	158	7.600	184	731
63 Kalimantan Selatan	26.371	394	30.370	513	27.293	446	27.294	445	1.798
64 Kalimantan Timur	15.934	388	17.840	377	13.084	281	12.628	287	1.333
KALIMANTAN	61.821	1.154	64.297	1.170	55.647	992	54.732	1.075	4.391
71 Sulawesi Utara	5.086	138	4.966	128	4.274	141	4.642	139	546
72 Sulawesi Tengah	2.847	77	1.581	27	1.502	24	2.416	72	200
73 Sulawesi Selatan	19.656	417	14.789	350	13.937	338	11.124	235	1.340
74 Sulawesi Tenggara	4185	113	2917	63	3445	82	4265	104	362
75 Gorontalo	997	17	820	12	646	10	263	6	45
76 Sulawesi Barat	802	13	850	16	879	15	192	6	50
SULAWESI	33.573	775	25.923	596	24.683	610	22.902	562	2.543
81 M a l u k u	1.516	43	1.120	30	518	13	510	13	99
82 Maluku Utara	857	22	857	22	857	22	-	-	66
91 Papua Barat	2.840	39	2.454	32	2.833	44	2.863	45	160
94 P a p u a	775	4	1.706	18	762	10	2.865	64	96
MALUKU DAN PAPUA	5.988	108	6.137	102	4.970	89	6.238	122	421
I N D O N E S I A	849.119	19.126	735.444	15.963	761.796	18.509	698.451	18.799	72.397

Tabel 1.3. Produksi dan Banyaknya Tanaman Duku/Langsak/Kokosan yang Menghasilkan Menurut Propinsi 2008
Table 1.3. Production and Number of Harvested Plant of Duku by Province 2008

Propinsi Province	Triwulan I / Qtr I		Triwulan II / Qtr II		Triwulan III / Qtr III		Triwulan IV / Qtr IV		Total Produksi Total Production (ton)
	Tanaman yang menghasilkan Harvested Plant (Pohon/tree)	Produksi Production (ton)	Tanaman yang menghasilkan Harvested Plant (Pohon/tree)	Produksi Production (ton)	Tanaman yang menghasilkan Harvested Plant (Pohon/tree)	Produksi Production (ton)	Tanaman yang menghasilkan Harvested Plant (Pohon/tree)	Produksi Production (ton)	
(1)	(2)	(3)	(4)	(5)	(6)	(7)	(8)	(9)	(10)
11 Nanggroe Aceh Darussalam	23.270	388	10.480	237	12.225	406	34.768	2.363	3.394
12 Sumatera Utara	21.698	1.555	21.655	1.531	75.173	5.890	90.652	7.010	15.986
13 Sumatera Barat	2.914	106	1.331	84	4.817	123	37.056	3.107	3.420
14 R i a u	22.851	533	9.655	293	12.541	364	66.566	4.110	5.300
15 J a m b i	54.458	2.429	10.911	157	22.730	544	166.065	17.478	20.608
16 Sumatera Selatan	182.204	7.834	43.111	732	50.866	757	249.629	6.121	15.444
17 Bengkulu	2.627	193	3.657	228	2.757	166	5.434	367	954
18 Lampung	53.308	2.115	21.179	411	16.719	320	41.510	2.229	5.075
19 Bangka Belitung	15.195	285	6.220	182	8.580	208	8.308	226	901
21 Kepulauan Riau	1.132	20	816	21	10.553	170	70	2	213
SUMATERA	379.657	15.458	129.015	3.876	216.961	8.948	700.058	43.013	71.295
31 DKI Jakarta	1.150	20	1.200	20	1.200	20	-	-	60
32 Jawa Barat	68.562	5.883	27.626	2.110	4.714	148	68.524	4.127	12.268
33 Jawa Tengah	140.055	6.708	60.692	2.699	18.323	353	65.223	1.815	11.575
34 DI Yogyakarta	14.500	976	2.291	47	360	8	9.586	292	1.323
35 Jawa Timur	68.659	3.898	30.512	583	20.025	653	39.548	1.535	6.669
36 B a n t e n	30.278	1.430	31.939	606	32.109	472	34.684	1.734	4.242
J A W A	323.204	18.915	154.260	6.065	76.731	1.654	217.565	9.503	36.137
51 B a l i	10.619	165	2.885	49	-	-	2.297	118	332
52 Nusa Tenggara Barat	1.795	109	1.039	22	-	-	1.742	27	158
53 Nusa Tenggara Timur	196	3	39	1	1.852	58	76	2	64
BALI DAN NUSA TENGGARA	12.610	277	3.963	72	1.852	58	4.115	147	554
61 Kalimantan Barat	46.679	763	24.443	364	22.151	598	37.154	1.743	3.468
62 Kalimantan Tengah	46.729	1.379	28.485	438	16.806	379	17.598	690	2.886
63 Kalimantan Selatan	91.154	3.661	3.086	199	2.263	77	1.239	27	3.964
64 Kalimantan Timur	52.121	1.644	22.063	448	58.070	1.072	33.679	1.208	4.372
KALIMANTAN	236.683	7.447	78.077	1.449	99.290	2.126	89.670	3.668	14.690
71 Sulawesi Utara	42.513	1.734	11.029	597	116.476	4.317	118.350	3.974	10.622
72 Sulawesi Tengah	11.054	523	37.083	781	7.707	182	41.087	1.334	2.820
73 Sulawesi Selatan	261.289	7.724	74.438	1.171	42.496	761	81.743	1.377	11.033
74 Sulawesi Tenggara	20.192	1.275	10.482	508	18.290	615	12.517	349	2.747
75 Gorontalo	8.317	124	966	20	561	10	1.159	18	172
76 Sulawesi Barat	24.818	2.282	35.903	2.379	24.773	758	4.357	432	5.851
SULAWESI	368.183	13.662	169.901	5.456	210.303	6.643	259.213	7.484	33.245
81 M a l u k u	3.941	200	9.885	532	3.018	41	3.423	156	929
82 Maluku Utara	11.562	25	-	-	-	-	40.573	118	143
91 Papua Barat	1.110	17	50	2	8.425	254	10.876	415	688
94 P a p u a	43.287	542	6.509	112	528	12	10.148	302	968
MALUKU DAN PAPUA	59.900	784	16.444	646	11.971	307	65.020	991	2.728
I N D O N E S I A	1.380.237	56.543	551.660	17.564	617.108	19.736	1.335.641	64.806	158.649

Tabel 1.4 Produksi dan Banyaknya Tanaman Durian yang Menghasilkan Menurut Propinsi 2008
Table 1.4 Production and Number of Harvested Plant of Durian by Province 2008

Propinsi Province	Triwulan I / Qtr I		Triwulan II / Qtr II		Triwulan III / Qtr III		Triwulan IV / Qtr IV		Total Produksi Total Production (ton)
	Tanaman yang menghasilkan Harvested Plant (Pohon/tree)	Produksi Production (ton)	Tanaman yang menghasilkan Harvested Plant (Pohon/tree)	Produksi Production (ton)	Tanaman yang menghasilkan Harvested Plant (Pohon/tree)	Produksi Production (ton)	Tanaman yang menghasilkan Harvested Plant (Pohon/tree)	Produksi Production (ton)	
(1)	(2)	(3)	(4)	(5)	(6)	(7)	(8)	(9)	(10)
11 Nanggroe Aceh Darussalam	27.621	1.851	55.033	1.032	26.709	1.152	84.819	4.697	8.732
12 Sumatera Utara	125.042	9.379	219.714	18.470	417.782	48.032	466.657	52.922	128.803
13 Sumatera Barat	37.982	3.297	79.609	6.793	113.012	9.564	227.918	22.320	41.974
14 R i a u	141.283	2.000	80.747	1.560	166.164	3.587	110.209	3.424	10.571
15 J a m b i	60.464	2.156	6.302	104	24.127	509	162.080	10.713	13.482
16 Sumatera Selatan	227.077	10.918	48.932	704	94.625	2.777	239.519	9.760	24.159
17 Bengkulu	89.821	7.838	211.846	8.590	82.528	5.480	66.183	4.996	26.904
18 Lampung	251.035	16.912	106.861	3.074	83.298	1.685	215.759	9.540	31.211
19 Bangka Belitung	18.734	432	11.806	340	11.179	589	43.957	1.056	2.417
21 Kepulauan Riau	45.008	542	73.398	2.997	63.094	831	14.492	181	4.551
SUMATERA	1.024.067	55.325	894.248	43.664	1.082.518	74.206	1.631.593	119.609	292.804
31 DKI Jakarta	2.845	71	2.798	34	1.605	21	150	3	129
32 Jawa Barat	410.697	48.560	106.134	7.754	43.790	1.067	532.542	33.716	91.097
33 Jawa Tengah	508.081	27.018	64.471	3.399	98.426	4.727	664.050	29.875	65.019
34 DI Yogyakarta	59.929	3.821	2.728	39	68	7	49.349	2.421	6.288
35 Jawa Timur	815.771	52.227	95.307	4.019	82.504	3.350	538.370	31.482	91.078
36 B a n t e n	172.865	9.314	108.811	1.534	21.520	399	279.424	12.027	23.274
J A W A	1.970.188	141.011	380.249	16.779	247.913	9.571	2.063.885	109.524	276.885
51 B a l i	59.178	4.106	9.855	594	611	19	57.070	3.684	8.403
52 Nusa Tenggara Barat	30.342	2.235	850	94	10.900	161	20.485	799	3.289
53 Nusa Tenggara Timur	5.427	130	8.472	303	5.444	218	4.327	136	787
BALI DAN NUSA TENGGARA	94.947	6.471	19.177	991	16.955	398	81.882	4.619	12.479
61 Kalimantan Barat	135.103	4.502	151.627	4.147	75.090	1.350	131.063	6.437	16.436
62 Kalimantan Tengah	104.838	3.323	38.421	885	65.998	1.268	86.814	2.564	8.040
63 Kalimantan Selatan	125.250	6.156	3.437	118	6.922	412	54.301	2.590	9.276
64 Kalimantan Timur	143.622	3.877	21.670	547	23.962	518	43.181	1.133	6.075
KALIMANTAN	508.813	17.858	215.155	5.697	171.972	3.548	315.359	12.724	39.827
71 Sulawesi Utara	18.992	1.277	10.893	835	118.993	5.166	106.699	4.222	11.500
72 Sulawesi Tengah	55.738	3.747	40.109	1.107	26.906	2.291	35.667	2.051	9.196
73 Sulawesi Selatan	311.626	12.198	68.176	2.387	59.112	791	103.500	5.728	21.104
74 Sulawesi Tenggara	29.045	1.127	3.498	257	72	3	5.505	499	1.886
75 Gorontalo	4.889	87	1.162	18	275	4	5.321	115	224
76 Sulawesi Barat	39.454	2.554	12.973	993	3.475	306	1.436	94	3.947
SULAWESI	459.744	20.990	136.811	5.597	208.833	8.561	258.128	12.709	47.857
81 M a l u k u	25.933	2.376	20.042	1.606	200	20	16.291	1.336	5.338
82 Maluku Utara	37.612	1.283	-	-	-	-	37.612	692	1.975
91 Papua Barat	6.534	160	4.471	60	12.257	892	8.457	845	1.957
94 P a p u a	124.435	1.760	10.255	220	2.648	65	55.426	1.156	3.201
MALUKU DAN PAPUA	194.514	5.579	34.768	1.886	15.105	977	117.786	4.029	12.471
I N D O N E S I A	4.252.273	247.234	1.680.408	74.614	1.743.296	97.261	4.468.633	263.214	682.323

Tabel 1.5 **Produksi dan Banyaknya Tanaman Jambu Biji yang Menghasilkan Menurut Propinsi 2008**
Table **1.5** **Production and Number of Harvested Plant of Guava by Province 2008**

Propinsi Province	Triwulan I / Qtr I		Triwulan II / Qtr II		Triwulan III / Qtr III		Triwulan IV / Qtr IV		Total Produksi Total Production (ton)
	Tanaman yang menghasilkan Harvested Plant (Pohon/tree)	Produksi Production (ton)	Tanaman yang menghasilkan Harvested Plant (Pohon/tree)	Produksi Production (ton)	Tanaman yang menghasilkan Harvested Plant (Pohon/tree)	Produksi Production (ton)	Tanaman yang menghasilkan Harvested Plant (Pohon/tree)	Produksi Production (ton)	
(1)	(2)	(3)	(4)	(5)	(6)	(7)	(8)	(9)	(10)
11 Nanggroe Aceh Darussalam	13.285	265	23.146	627	15.025	324	12.333	256	1.472
12 Sumatera Utara	212.993	3.898	187.831	3.400	195.609	6.803	209.102	8.681	22.782
13 Sumatera Barat	20.085	442	21.723	337	33.351	403	15.924	317	1.499
14 R i a u	37.188	495	33.140	646	34.596	684	36.619	785	2.610
15 J a m b i	20.812	357	17.341	252	18.003	267	18.926	327	1.203
16 Sumatera Selatan	74.341	1.580	52.962	732	48.573	780	57.829	826	3.918
17 Bengkulu	11.137	177	11.533	202	13.791	230	12.731	185	794
18 Lampung	54.921	1.009	50.997	794	49.788	766	51.374	847	3.416
19 Bangka Belitung	12.094	244	7.951	103	27.218	506	26.500	494	1.347
21 Kepulauan Riau	2.066	22	941	9	1.335	29	876	19	79
SUMATERA	458.922	8.489	407.565	7.102	437.289	10.792	442.214	12.737	39.120
31 DKI Jakarta	14.663	239	10.291	95	14.432	166	7.463	92	592
32 Jawa Barat	620.118	19.547	445.377	18.444	335.439	14.319	433.765	20.410	72.720
33 Jawa Tengah	425.144	6.824	282.711	4.490	354.157	6.266	353.553	5.833	23.413
34 DI Yogyakarta	116.552	1.860	46.040	442	77.377	1.032	79.808	1.194	4.528
35 Jawa Timur	430.273	7.166	217.612	3.330	254.110	3.997	223.080	3.443	17.936
36 B a n t e n	88.181	1.447	60.341	1.178	68.947	860	86.849	1.705	5.190
J A W A	1.694.931	37.083	1.062.372	27.979	1.104.462	26.640	1.184.518	32.677	124.379
51 B a l i	55.647	608	32.225	345	22.638	338	32.375	382	1.673
52 Nusa Tenggara Barat	290.012	5.255	247.183	4.310	247.639	2.519	289.408	3.503	15.587
53 Nusa Tenggara Timur	119.506	3.319	68.183	1.477	104.936	1.623	96.100	1.160	7.579
BALI DAN NUSA TENGGARA	465.165	9.182	347.591	6.132	375.213	4.480	417.883	5.045	24.839
61 Kalimantan Barat	22.085	295	24.863	346	41.707	745	31.555	531	1.917
62 Kalimantan Tengah	29.412	369	22.989	235	22.738	299	23.653	478	1.381
63 Kalimantan Selatan	50.880	752	42.840	616	40.721	617	43.912	632	2.617
64 Kalimantan Timur	33.651	607	30.171	457	26.006	376	28.081	436	1.876
KALIMANTAN	136.028	2.023	120.863	1.654	131.172	2.037	127.201	2.077	7.791
71 Sulawesi Utara	12.815	195	10.361	183	11.168	180	12.424	256	814
72 Sulawesi Tengah	8.884	265	5.688	148	6.602	132	15.040	233	778
73 Sulawesi Selatan	333.731	6.900	146.958	2.148	130.890	1.488	114.074	1.577	12.113
74 Sulawesi Tenggara	20.550	390	6.902	105	11.567	304	6.730	69	868
75 Gorontalo	4.553	42	4.423	44	2.737	26	2.911	27	139
76 Sulawesi Barat	10.915	133	10.651	92	5.178	52	3.815	39	316
SULAWESI	391.448	7.925	184.983	2.720	168.142	2.182	154.994	2.201	15.028
81 M a l u k u	2.438	46	3.676	94	1.193	33	1.545	39	212
82 Maluku Utara	6.210	276	-	-	6.125	244	-	-	520
91 Papua Barat	2.242	30	2.780	26	5.161	48	4.829	42	146
94 P a p u a	3.328	26	3.569	40	2.788	31	12.024	128	225
MALUKU DAN PAPUA	14.218	378	10.025	160	15.267	356	18.398	209	1.103
I N D O N E S I A	3.160.712	65.080	2.133.399	45.747	2.231.545	46.487	2.345.208	54.946	212.260

Tabel 1.6 **Produksi dan Banyaknya Tanaman Jambu Air yang Menghasilkan Menurut Propinsi 2008**
Table 1.6 **Production and Number of Harvested Plant of Rose Apple by Province 2008**

Propinsi Province	Triwulan I / Qtr I		Triwulan II / Qtr II		Triwulan III / Qtr III		Triwulan IV / Qtr IV		Total Produksi Total Production (ton)
	Tanaman yang menghasilkan Harvested Plant (Pohon/tree)	Produksi Production (ton)	Tanaman yang menghasilkan Harvested Plant (Pohon/tree)	Produksi Production (ton)	Tanaman yang menghasilkan Harvested Plant (Pohon/tree)	Produksi Production (ton)	Tanaman yang menghasilkan Harvested Plant (Pohon/tree)	Produksi Production (ton)	
(1)	(2)	(3)	(4)	(5)	(6)	(7)	(8)	(9)	(10)
11 Nanggroe Aceh Darussalam	16.906	358	18.939	303	11.291	202	11.922	307	1.170
12 Sumatera Utara	68.080	2.222	86.676	2.536	91.319	3.526	89.192	4.511	12.795
13 Sumatera Barat	10.279	391	25.103	565	19.851	479	25.170	705	2.140
14 R i a u	25.527	231	21.746	362	73.932	3.553	77.380	3.616	7.762
15 J a m b i	15.950	358	12.884	333	12.826	292	17.560	466	1.449
16 Sumatera Selatan	41.913	836	37.686	993	37.650	652	45.848	1.252	3.733
17 Bengkulu	8.520	242	7.320	201	8.454	235	8.284	162	840
18 Lampung	57.165	1.560	54.845	1.019	44.970	918	57.233	1.515	5.012
19 Bangka Belitung	8.525	133	7.451	118	8.560	257	7.707	162	670
21 Kepulauan Riau	1.873	41	977	36	1.383	37	987	32	146
SUMATERA	254.738	6.372	273.627	6.466	310.236	10.151	341.283	12.728	35.717
31 DKI Jakarta	18.399	170	14.469	113	19.730	195	8.598	82	560
32 Jawa Barat	125.626	4.721	105.114	5.496	111.109	8.196	165.666	12.137	30.550
33 Jawa Tengah	135.469	3.057	145.411	3.780	182.512	4.607	202.978	4.745	16.189
34 DI Yogyakarta	3.262	25	10.089	222	22.834	718	15.846	496	1.461
35 Jawa Timur	75.472	1.686	83.210	1.197	161.133	4.269	158.444	2.651	9.803
36 B a n t e n	38.193	518	39.368	672	40.354	537	64.190	675	2.402
J A W A	396.421	10.177	397.661	11.480	537.672	18.522	615.722	20.786	60.965
51 B a l i	3.376	53	6.237	119	12.341	337	17.036	482	991
52 Nusa Tenggara Barat	33.593	750	18.318	239	42.969	531	37.967	438	1.958
53 Nusa Tenggara Timur	14.081	279	12.234	236	14.225	396	8.787	263	1.174
BALI DAN NUSA TENGGARA	51.050	1.082	36.789	594	69.535	1.264	63.790	1.183	4.123
61 Kalimantan Barat	15.257	200	24.067	695	18.329	290	23.608	380	1.565
62 Kalimantan Tengah	15.729	206	10.862	98	11.577	179	10.435	214	697
63 Kalimantan Selatan	22.464	266	30.572	376	30.321	452	32.830	471	1.565
64 Kalimantan Timur	15.423	341	15.839	214	12.736	212	18.611	306	1.073
KALIMANTAN	68.873	1.013	81.340	1.383	72.963	1.133	85.484	1.371	4.900
71 Sulawesi Utara	7.150	178	3.658	80	7.250	201	3.670	69	528
72 Sulawesi Tengah	5.704	209	8.202	133	5.680	89	10.780	202	633
73 Sulawesi Selatan	23.851	402	15.268	348	14.655	327	15.482	286	1.363
74 Sulawesi Tenggara	7.057	257	3.822	138	17.434	152	14.252	204	751
75 Gorontalo	2.349	27	2.395	21	2.367	18	1.071	10	76
76 Sulawesi Barat	12.559	344	12.551	70	3.142	68	1.381	8	490
SULAWESI	58.670	1.417	45.896	790	50.528	855	46.636	779	3.841
81 M a l u k u	2.943	60	1.158	31	460	12	1.517	46	149
82 Maluku Utara	11.251	385	11.251	385	11.251	385	11.251	385	1.540
91 Papua Barat	960	5	685	3	4.173	19	4.339	18	45
94 P a p u a	3.552	26	2.287	42	3.081	33	18.380	114	215
MALUKU DAN PAPUA	18.706	476	15.381	461	18.965	449	35.487	563	1.949
I N D O N E S I A	848.458	20.537	850.694	21.174	1.059.899	32.374	1.188.402	37.410	111.495

Tabel 1.7 **Produksi dan Banyaknya Tanaman Jeruk (Siam/Kepron + Besar) yang Menghasilkan Menurut Propinsi 2008**
Table 1.7 **Production and Number of Harvested Plant of Orange (Orange/Tangerine + Pomelo) by Province 2008**

Propinsi Province	Triwulan I / Qtr I		Triwulan II / Qtr II		Triwulan III / Qtr III		Triwulan IV / Qtr IV		Total Produksi Total Production (ton)
	Tanaman yang menghasilkan Harvested Plant (Pohon/tree)	Produksi Production (ton)	Tanaman yang menghasilkan Harvested Plant (Pohon/tree)	Produksi Production (ton)	Tanaman yang menghasilkan Harvested Plant (Pohon/tree)	Produksi Production (ton)	Tanaman yang menghasilkan Harvested Plant (Pohon/tree)	Produksi Production (ton)	
(1)	(2)	(3)	(4)	(5)	(6)	(7)	(8)	(9)	(10)
11 Nanggroe Aceh Darussalam	104.403	3.889	102.247	4.215	89.304	3.194	94.314	3.091	14.389
12 Sumatera Utara	3.264.443	178.265	5.194.327	325.297	3.149.853	169.234	3.110.309	185.712	858.508
13 Sumatera Barat	154.366	4.416	225.848	5.400	199.311	6.561	230.309	8.319	24.696
14 R i a u	302.977	5.058	291.074	5.934	345.620	7.074	304.175	9.007	27.073
15 J a m b i	286.374	10.115	267.278	8.579	280.566	9.085	286.697	8.841	36.620
16 Sumatera Selatan	782.715	12.597	1.012.442	18.284	1.005.321	23.465	676.187	9.887	64.233
17 Bengkulu	90.049	3.861	94.901	2.975	95.678	2.330	120.183	5.109	14.275
18 Lampung	474.324	7.177	818.694	39.004	614.171	14.816	272.621	4.260	65.257
19 Bangka Belitung	59.929	1.204	68.894	876	60.690	3.700	145.947	5.015	10.795
21 Kepulauan Riau	4.665	55	3.555	45	4.151	59	2.609	31	190
SUMATERA	5.524.245	226.637	8.079.260	410.609	5.844.665	239.518	5.243.351	239.272	1.116.036
31 DKI Jakarta	100	1	100	1	110	1	-	-	3
32 Jawa Barat	273.789	4.969	279.137	5.239	237.785	5.117	285.494	12.586	27.911
33 Jawa Tengah	144.986	3.005	744.503	15.976	451.864	6.928	456.852	7.818	33.727
34 DI Yogyakarta	19.436	536	31.927	464	20.604	366	27.637	514	1.880
35 Jawa Timur	3.313.355	83.586	6.686.318	301.694	3.913.279	84.090	2.500.863	51.494	520.864
36 B a n t e n	9.300	204	23.642	493	12.836	207	16.314	236	1.140
J A W A	3.760.966	92.301	7.765.627	323.867	4.636.478	96.709	3.287.160	72.648	585.525
51 B a l i	860.515	12.795	1.171.841	12.053	1.181.780	22.575	1.120.526	23.809	71.232
52 Nusa Tenggara Barat	20.274	816	27.224	570	41.696	1.043	46.646	1.054	3.483
53 Nusa Tenggara Timur	357.031	6.937	428.967	10.121	325.351	7.606	253.815	3.653	28.317
BALI DAN NUSA TENGGARA	1.237.820	20.548	1.628.032	22.744	1.548.827	31.224	1.420.987	28.516	103.032
61 Kalimantan Barat	3.387.585	57.025	2.888.057	41.508	3.372.769	39.970	2.972.356	43.290	181.793
62 Kalimantan Tengah	98.280	1.502	65.603	1.084	57.549	1.743	65.242	1.836	6.165
63 Kalimantan Selatan	631.224	17.012	873.840	21.581	651.472	23.083	718.921	17.404	79.080
64 Kalimantan Timur	104.663	3.169	114.490	3.143	87.567	1.944	96.004	2.235	10.491
KALIMANTAN	4.221.752	78.708	3.941.990	67.316	4.169.357	66.740	3.852.523	64.765	277.529
71 Sulawesi Utara	17.001	481	10.145	323	15.610	542	15.455	518	1.864
72 Sulawesi Tengah	263.798	3.004	291.169	5.849	168.261	2.212	203.957	2.549	13.614
73 Sulawesi Selatan	389.443	7.496	571.703	10.555	210.073	4.201	545.132	11.442	33.694
74 Sulawesi Tenggara	209.364	4.725	323.914	6.046	343.175	4.303	111.396	4.007	19.081
75 Gorontalo	11.279	209	10.108	255	6.651	110	6.774	96	670
76 Sulawesi Barat	2.037.966	82.410	1.564.928	74.429	1.157.213	78.020	903.129	66.624	301.483
SULAWESI	2.928.851	98.325	2.771.967	97.457	1.900.983	89.388	1.785.843	85.236	370.406
81 M a l u k u	40.000	1.062	50.324	1.745	6.399	257	28.257	968	4.032
82 Maluku Utara	235.637	1.393	240.265	1.393	240.265	1.393	-	-	4.179
91 Papua Barat	1.955	38	481	7	6.293	77	5.060	51	173
94 P a p u a	63.660	978	36.846	647	13.974	191	416.508	4.904	6.720
MALUKU DAN PAPUA	341.252	3.471	327.916	3.792	266.931	1.918	449.825	5.923	15.104
I N D O N E S I A	18.014.886	519.990	24.514.792	925.785	18.367.241	525.497	16.039.689	496.360	2.467.632

Tabel 1.7.1 **Produksi dan Banyaknya Tanaman Jeruk Siam/Keprok yang Menghasilkan Menurut Propinsi 2008**
Table **1.7.1** **Production and Number of Harvested Plant of Orange/Tangerine by Province 2008**

Propinsi Province	Triwulan I / Qtr I		Triwulan II / Qtr II		Triwulan III / Qtr III		Triwulan IV / Qtr IV		Total Produksi Total Production (ton)
	Tanaman yang menghasilkan Harvested Plant (Pohon/tree)	Produksi Production (ton)	Tanaman yang menghasilkan Harvested Plant (Pohon/tree)	Produksi Production (ton)	Tanaman yang menghasilkan Harvested Plant (Pohon/tree)	Produksi Production (ton)	Tanaman yang menghasilkan Harvested Plant (Pohon/tree)	Produksi Production (ton)	
(1)	(2)	(3)	(4)	(5)	(6)	(7)	(8)	(9)	(10)
11 Nanggroe Aceh Darussalam	64.514	1.346	68.740	1.439	59.043	1.226	62.889	1.592	5.603
12 Sumatera Utara	3.249.074	177.862	5.167.599	324.492	3.125.169	168.599	3.084.122	185.064	856.017
13 Sumatera Barat	153.659	4.369	225.270	5.374	198.419	6.527	229.468	8.286	24.556
14 R i a u	297.133	4.966	284.537	5.821	340.292	6.985	296.282	8.869	26.641
15 J a m b i	284.889	10.016	265.371	8.495	279.044	9.042	285.105	8.794	36.347
16 Sumatera Selatan	777.567	12.334	1.009.603	18.193	1.003.051	23.386	671.568	9.760	63.673
17 Bengkulu	79.521	3.539	85.202	2.763	86.037	2.084	110.104	4.849	13.235
18 Lampung	468.300	6.946	815.378	38.849	608.561	14.705	268.833	3.991	64.491
19 Bangka Belitung	57.810	1.116	68.091	818	59.999	3.656	145.182	4.982	10.572
21 Kepulauan Riau	2.848	29	2.821	35	2.813	40	1.934	21	125
SUMATERA	5.435.315	222.523	7.992.612	406.279	5.762.428	236.250	5.155.487	236.208	1.101.260
31 DKI Jakarta	100	1	100	1	110	1	-	-	3
32 Jawa Barat	251.591	3.659	259.648	4.552	222.475	4.663	266.346	11.659	24.533
33 Jawa Tengah	125.996	2.256	709.333	14.408	428.932	6.336	403.214	5.971	28.971
34 DI Yogyakarta	18.348	497	31.651	457	19.572	341	25.416	441	1.736
35 Jawa Timur	3.113.869	80.294	6.517.682	287.084	3.664.192	77.936	2.493.355	51.261	496.575
36 B a n t e n	8.701	188	22.566	462	9.706	143	14.498	198	991
J A W A	3.518.605	86.895	7.540.980	306.964	4.344.987	89.420	3.202.829	69.530	552.809
51 B a l i	856.771	12.725	1.169.722	11.877	1.179.938	22.421	1.117.609	23.569	70.592
52 Nusa Tenggara Barat	15.635	642	22.912	431	27.203	656	21.502	421	2.150
53 Nusa Tenggara Timur	316.774	5.453	363.769	7.020	287.811	6.468	222.875	2.633	21.574
BALI DAN NUSA TENGGARA	1.189.180	18.820	1.556.403	19.328	1.494.952	29.545	1.361.986	26.623	94.316
61 Kalimantan Barat	3.382.820	56.896	2.884.232	41.374	3.367.829	39.860	2.965.674	43.098	181.228
62 Kalimantan Tengah	90.097	1.235	61.981	1.009	55.851	1.701	63.521	1.769	5.714
63 Kalimantan Selatan	599.862	16.489	845.330	20.989	621.345	22.370	690.463	16.754	76.602
64 Kalimantan Timur	100.054	3.000	106.325	2.992	83.972	1.851	86.470	2.045	9.888
KALIMANTAN	4.172.833	77.620	3.897.868	66.364	4.128.997	65.782	3.806.128	63.666	273.432
71 Sulawesi Utara	10.747	299	5.040	133	10.626	359	10.453	331	1.122
72 Sulawesi Tengah	262.522	2.880	289.068	5.690	166.483	2.163	200.691	2.423	13.156
73 Sulawesi Selatan	305.115	4.537	482.160	6.148	182.528	3.069	516.136	10.447	24.201
74 Sulawesi Tenggara	204.257	4.593	320.012	5.881	334.709	3.995	102.448	3.786	18.255
75 Gorontalo	8.352	153	6.774	189	6.539	107	4.488	63	512
76 Sulawesi Barat	2.029.236	81.697	1.553.874	73.460	1.146.300	77.160	895.340	65.840	298.157
SULAWESI	2.820.229	94.159	2.656.928	91.501	1.847.185	86.853	1.729.556	82.890	355.403
81 M a l u k u	39.786	1.055	50.174	1.735	5.999	227	27.880	952	3.969
82 Maluku Utara	231.100	1.132	235.025	1.132	235.025	1.132	-	-	3.396
91 Papua Barat	1.279	13	305	3	6.172	75	4.929	49	140
94 P a p u a	62.883	956	35.692	622	13.076	160	396.722	4.548	6.286
MALUKU DAN PAPUA	335.048	3.156	321.196	3.492	260.272	1.594	429.531	5.549	13.791
I N D O N E S I A	17.471.210	503.173	23.965.987	893.928	17.838.821	509.444	15.685.517	484.466	2.391.011

Tabel 1.7.2 **Produksi dan Banyaknya Tanaman Jeruk Besar yang Menghasilkan Menurut Propinsi 2008**
Table **Production and Number of Harvested Plant of Pomelo by Province 2008**

Propinsi Province	Triwulan I / Qtr I		Triwulan II / Qtr II		Triwulan III / Qtr III		Triwulan IV / Qtr IV		Total Produksi Total Production (ton)
	Tanaman yang menghasilkan Harvested Plant (Pohon/tree)	Produksi Production (ton)	Tanaman yang menghasilkan Harvested Plant (Pohon/tree)	Produksi Production (ton)	Tanaman yang menghasilkan Harvested Plant (Pohon/tree)	Produksi Production (ton)	Tanaman yang menghasilkan Harvested Plant (Pohon/tree)	Produksi Production (ton)	
(1)	(2)	(3)	(4)	(5)	(6)	(7)	(8)	(9)	(10)
11 Nanggroe Aceh Darussalam	39.889	2.543	33.507	2.776	30.261	1.968	31.425	1.499	8.786
12 Sumatera Utara	15.369	403	26.728	805	24.684	635	26.187	648	2.491
13 Sumatera Barat	707	47	578	26	892	34	841	33	140
14 R i a u	5.844	92	6.537	113	5.328	89	7.893	138	432
15 J a m b i	1.485	99	1.907	84	1.522	43	1.592	47	273
16 Sumatera Selatan	5.148	263	2.839	91	2.270	79	4.619	127	560
17 Bengkulu	10.528	322	9.699	212	9.641	246	10.079	260	1.040
18 Lampung	6.024	231	3.316	155	5.610	111	3.788	269	766
19 Bangka Belitung	2.119	88	803	58	691	44	765	33	223
21 Kepulauan Riau	1.817	26	734	10	1.338	19	675	10	65
SUMATERA	88.930	4.114	86.648	4.330	82.237	3.268	87.864	3.064	14.776
31 DKI Jakarta	-	-	-	-	-	-	-	-	-
32 Jawa Barat	22.198	1.310	19.489	687	15.310	454	19.148	927	3.378
33 Jawa Tengah	18.990	749	35.170	1.568	22.932	592	53.638	1.847	4.756
34 DI Yogyakarta	1.088	39	276	7	1.032	25	2.221	73	144
35 Jawa Timur	199.486	3.292	168.636	14.610	249.087	6.154	7.508	233	24.289
36 B a n t e n	599	16	1.076	31	3.130	64	1.816	38	149
J A W A	242.361	5.406	224.647	16.903	291.491	7.289	84.331	3.118	32.716
51 B a l i	3.744	70	2.119	176	1.842	154	2.917	240	640
52 Nusa Tenggara Barat	4.639	174	4.312	139	14.493	387	25.144	633	1.333
53 Nusa Tenggara Timur	40.257	1.484	65.198	3.101	37.540	1.138	30.940	1.020	6.743
BALI DAN NUSA TENGGARA	48.640	1.728	71.629	3.416	53.875	1.679	59.001	1.893	8.716
61 Kalimantan Barat	4.765	129	3.825	134	4.940	110	6.682	192	565
62 Kalimantan Tengah	8.183	267	3.622	75	1.698	42	1.721	67	451
63 Kalimantan Selatan	31.362	523	28.510	592	30.127	713	28.458	650	2.478
64 Kalimantan Timur	4.609	169	8.165	151	3.595	93	9.534	190	603
KALIMANTAN	48.919	1.088	44.122	952	40.360	958	46.395	1.099	4.097
71 Sulawesi Utara	6.254	182	5.105	190	4.984	183	5.002	187	742
72 Sulawesi Tengah	1.276	124	2.101	159	1.778	49	3.266	126	458
73 Sulawesi Selatan	84.328	2.959	89.543	4.407	27.545	1.132	28.996	995	9.493
74 Sulawesi Tenggara	5.107	132	3.902	165	8.466	308	8.948	221	826
75 Gorontalo	2.927	56	3.334	66	112	3	2.286	33	158
76 Sulawesi Barat	8.730	713	11.054	969	10.913	860	7.789	784	3.326
SULAWESI	108.622	4.166	115.039	5.956	53.798	2.535	56.287	2.346	15.003
81 M a l u k u	214	7	150	10	400	30	377	16	63
82 Maluku Utara	4.537	261	5.240	261	5.240	261	-	-	783
91 Papua Barat	676	25	176	4	121	2	131	2	33
94 P a p u a	777	22	1.154	25	898	31	19.786	356	434
MALUKU DAN PAPUA	6.204	315	6.720	300	6.659	324	20.294	374	1.313
I N D O N E S I A	543.676	16.817	548.805	31.857	528.420	16.053	354.172	11.894	76.621

Tabel 1.8 **Produksi dan Banyaknya Tanaman Mangga yang Menghasilkan Menurut Propinsi 2008**
 Table **1.8** **Production and Number of Harvested Plant of Mango by Province 2008**

Propinsi Province	Triwulan I / Qtr I		Triwulan II / Qtr II		Triwulan III / Qtr III		Triwulan IV / Qtr IV		Total Produksi Total Production (ton)
	Tanaman yang menghasilkan Harvested Plant (Pohon/tree)	Produksi Production (ton)	Tanaman yang menghasilkan Harvested Plant (Pohon/tree)	Produksi Production (ton)	Tanaman yang menghasilkan Harvested Plant (Pohon/tree)	Produksi Production (ton)	Tanaman yang menghasilkan Harvested Plant (Pohon/tree)	Produksi Production (ton)	
(1)	(2)	(3)	(4)	(5)	(6)	(7)	(8)	(9)	(10)
11 Nanggroe Aceh Darussalam	102.770	3.304	83.221	3.553	90.303	3.936	72.348	4.419	15.212
12 Sumatera Utara	95.251	5.551	80.443	4.101	120.435	7.330	148.624	9.383	26.365
13 Sumatera Barat	15.259	1.342	28.805	1.554	31.169	1.691	27.508	1.806	6.393
14 R i a u	47.719	1.064	43.500	1.162	44.420	1.773	63.582	2.013	6.012
15 J a m b i	8.842	610	6.029	364	9.642	543	14.397	1.155	2.672
16 Sumatera Selatan	62.710	2.102	41.440	1.059	91.918	3.519	92.737	2.799	9.479
17 Bengkulu	6.729	561	9.287	646	22.580	1.480	10.458	797	3.484
18 Lampung	253.489	7.914	116.279	3.049	284.362	15.829	276.534	16.054	42.846
19 Bangka Belitung	15.947	645	6.480	185	9.352	347	20.033	722	1.899
21 Kepulauan Riau	5.523	113	3.675	74	2.278	48	783	20	255
SUMATERA	614.239	23.206	419.159	15.747	706.459	36.496	727.004	39.168	114.617
31 DKI Jakarta	30.287	718	25.980	592	27.122	734	30.310	647	2.691
32 Jawa Barat	795.130	43.008	693.659	44.561	2.253.026	163.138	2.630.362	224.070	474.777
33 Jawa Tengah	634.214	21.521	890.992	28.551	4.021.835	177.869	2.693.657	120.867	348.808
34 DI Yogyakarta	36.711	777	36.928	3.340	197.482	6.331	545.386	24.171	34.619
35 Jawa Timur	1.113.950	54.395	1.195.381	42.569	6.175.723	308.447	6.372.187	286.493	691.904
36 B a n t e n	90.557	4.475	108.833	3.042	173.200	5.098	388.777	11.350	23.965
J A W A	2.700.849	124.894	2.951.773	122.655	12.848.388	661.617	12.660.679	667.598	1.576.764
51 B a l i	120.234	3.876	82.626	3.534	629.861	26.719	610.814	33.515	67.644
52 Nusa Tenggara Barat	229.291	14.919	195.121	4.408	654.492	20.091	591.023	21.902	61.320
53 Nusa Tenggara Timur	589.424	17.237	657.749	17.140	884.894	31.014	785.107	44.503	109.894
BALI DAN NUSA TENGGARA	938.949	36.032	935.496	25.082	2.169.247	77.824	1.986.944	99.920	238.858
61 Kalimantan Barat	17.477	969	17.595	496	15.690	511	14.093	380	2.356
62 Kalimantan Tengah	41.103	1.736	33.732	1.036	12.013	314	32.334	1.576	4.662
63 Kalimantan Selatan	47.121	2.116	20.638	756	39.856	1.329	72.223	1.955	6.156
64 Kalimantan Timur	38.543	2.170	30.498	1.553	62.328	2.127	31.418	1.431	7.281
KALIMANTAN	144.244	6.991	102.463	3.841	129.887	4.281	150.068	5.342	20.455
71 Sulawesi Utara	53.723	2.234	31.309	2.221	80.525	4.773	74.214	3.132	12.360
72 Sulawesi Tengah	60.994	3.298	75.731	1.618	41.118	2.939	74.433	3.854	11.709
73 Sulawesi Selatan	1.436.904	41.032	843.615	30.706	477.162	14.647	736.414	20.941	107.326
74 Sulawesi Tenggara	16.875	1.326	19.571	1.115	43.768	1.018	51.489	1.932	5.391
75 Gorontalo	51.888	1.062	33.435	681	31.162	711	30.782	655	3.109
76 Sulawesi Barat	16.545	957	35.599	1.370	52.056	2.827	74.532	2.073	7.227
SULAWESI	1.636.929	49.909	1.039.260	37.711	725.791	26.915	1.041.864	32.587	147.122
81 M a l u k u	34.899	1.472	8.636	284	3.882	112	17.625	534	2.402
82 Maluku Utara	15.325	153	-	-	12.213	153	12.213	153	459
91 Papua Barat	4.937	158	360	8	9.305	252	6.355	127	545
94 P a p u a	12.570	304	13.674	392	4.316	115	111.558	3.052	3.863
MALUKU DAN PAPUA	67.731	2.087	22.670	684	29.716	632	147.751	3.866	7.269
I N D O N E S I A	6.102.941	243.119	5.470.821	205.720	16.609.488	807.765	16.714.310	848.481	2.105.085

Tabel 1.9 **Produksi dan Banyaknya Tanaman Manggis yang Menghasilkan Menurut Propinsi 2008**
Table 1.9 **Production and Number of Harvested Plant of Mangosteen by Province 2008**

Propinsi Province	Triwulan I / Qtr I		Triwulan II / Qtr II		Triwulan III / Qtr III		Triwulan IV / Qtr IV		Total Produksi Total Production (ton)
	Tanaman yang menghasilkan Harvested Plant (Pohon/tree)	Produksi Production (ton)	Tanaman yang menghasilkan Harvested Plant (Pohon/tree)	Produksi Production (ton)	Tanaman yang menghasilkan Harvested Plant (Pohon/tree)	Produksi Production (ton)	Tanaman yang menghasilkan Harvested Plant (Pohon/tree)	Produksi Production (ton)	
(1)	(2)	(3)	(4)	(5)	(6)	(7)	(8)	(9)	(10)
11 Nanggroe Aceh Darussalam	2.201	42	3.679	102	6.819	84	9.637	337	565
12 Sumatera Utara	14.275	928	26.787	1.473	34.557	2.560	66.943	4.426	9.387
13 Sumatera Barat	35.174	1.490	13.399	588	25.049	1.072	141.969	10.782	13.932
14 R i a u	32.569	360	33.961	570	37.499	682	51.185	1.054	2.666
15 J a m b i	5.881	356	3.071	95	9.460	127	19.673	865	1.443
16 Sumatera Selatan	24.937	390	8.012	115	7.135	93	16.338	179	777
17 Bengkulu	4.021	208	5.418	255	6.917	315	72.808	3.857	4.635
18 Lampung	13.906	178	16.677	597	11.454	161	16.447	183	1.119
19 Bangka Belitung	24.341	1.217	9.496	506	10.825	646	12.247	268	2.637
21 Kepulauan Riau	995	10	2.736	57	5.020	42	452	6	115
SUMATERA	158.300	5.179	123.236	4.358	154.735	5.782	407.699	21.957	37.276
31 DKI Jakarta	905	51	-	-	-	-	-	-	51
32 Jawa Barat	128.290	9.663	24.134	2.431	28.785	826	147.054	10.818	23.738
33 Jawa Tengah	41.923	1.215	3.750	45	11.571	158	24.225	545	1.963
34 DI Yogyakarta	16.870	538	1.142	9	277	13	16.854	473	1.033
35 Jawa Timur	75.180	2.541	17.894	315	9.571	131	64.578	2.553	5.540
36 B a n t e n	30.951	376	70.627	938	23.685	234	48.683	787	2.335
J A W A	294.119	14.384	117.547	3.738	73.889	1.362	301.394	15.176	34.660
51 B a l i	22.547	612	1.165	79	-	-	9.478	136	827
52 Nusa Tenggara Barat	11.177	306	1.388	121	65	6	5.653	194	627
53 Nusa Tenggara Timur	53	4	46	1	-	-	40	1	6
BALI DAN NUSA TENGGARA	33.777	922	2.599	201	65	6	15.171	331	1.460
61 Kalimantan Barat	4.093	75	4.246	66	7.013	85	11.770	163	389
62 Kalimantan Tengah	9.693	246	3.641	104	5.889	171	6.997	208	729
63 Kalimantan Selatan	18.472	339	1.035	23	2.205	24	3.335	46	432
64 Kalimantan Timur	5.366	221	2.147	41	718	23	936	20	305
KALIMANTAN	37.624	881	11.069	234	15.825	303	23.038	437	1.855
71 Sulawesi Utara	8.621	342	1.727	65	10.897	433	11.918	492	1.332
72 Sulawesi Tengah	2.581	49	6.465	130	2.816	73	3.352	77	329
73 Sulawesi Selatan	6.978	128	44.915	579	30.380	575	2.835	42	1.324
74 Sulawesi Tenggara	90	5	-	-	11	1	36	2	8
75 Gorontalo	-	-	-	-	-	-	94	1	1
76 Sulawesi Barat	596	56	396	38	387	35	209	14	143
SULAWESI	18.866	580	53.503	812	44.491	1.117	18.444	628	3.137
81 M a l u k u	2.753	109	1.533	70	275	22	340	15	216
82 Maluku Utara	3.425	70	-	-	-	-	-	-	70
91 Papua Barat	-	-	-	-	-	-	-	-	-
94 P a p u a	-	-	-	-	-	-	-	-	-
MALUKU DAN PAPUA	6.178	179	1.533	70	275	22	340	15	286
I N D O N E S I A	548.864	22.125	309.487	9.413	289.280	8.592	766.086	38.544	78.674

Tabel 1.10 **Produksi dan Banyaknya Tanaman Nangka/Cempedak yang Menghasilkan Menurut Propinsi 2008**
Table **Production and Number of Harvested Plant of Jackfruit by Province 2008**

Propinsi Province	Triwulan I / Qtr I		Triwulan II / Qtr II		Triwulan III / Qtr III		Triwulan IV / Qtr IV		Total Produksi Total Production (ton)
	Tanaman yang menghasilkan Harvested Plant (Pohon/tree)	Produksi Production (ton)	Tanaman yang menghasilkan Harvested Plant (Pohon/tree)	Produksi Production (ton)	Tanaman yang menghasilkan Harvested Plant (Pohon/tree)	Produksi Production (ton)	Tanaman yang menghasilkan Harvested Plant (Pohon/tree)	Produksi Production (ton)	
(1)	(2)	(3)	(4)	(5)	(6)	(7)	(8)	(9)	(10)
11 Nanggroe Aceh Darussalam	33.627	892	34.184	968	24.644	652	17.412	759	3.271
12 Sumatera Utara	77.610	4.475	79.238	4.482	95.888	7.308	111.380	7.743	24.008
13 Sumatera Barat	44.720	1.776	40.736	1.561	43.077	1.632	49.406	2.344	7.313
14 R i a u	82.749	1.733	96.220	3.302	97.091	3.691	98.862	3.723	12.449
15 J a m b i	95.167	3.141	90.428	2.100	90.745	2.954	109.077	4.230	12.425
16 Sumatera Selatan	135.834	5.287	64.490	2.026	70.396	2.373	113.585	3.814	13.500
17 Bengkulu	25.190	1.442	32.122	1.201	25.863	1.373	24.238	1.511	5.527
18 Lampung	275.217	7.889	233.125	6.814	234.010	7.349	247.244	6.994	29.046
19 Bangka Belitung	37.009	1.431	41.817	1.574	23.279	972	36.851	1.293	5.270
21 Kepulauan Riau	27.889	651	15.564	628	31.615	973	10.520	255	2.507
SUMATERA	835.012	28.717	727.924	24.656	736.608	29.277	818.575	32.666	115.316
31 DKI Jakarta	6.501	137	5.660	88	7.253	113	1.562	30	368
32 Jawa Barat	401.981	21.882	272.785	20.195	319.401	22.781	404.954	46.417	111.275
33 Jawa Tengah	723.587	28.737	579.539	33.095	833.277	27.435	878.045	33.706	122.973
34 DI Yogyakarta	93.963	4.754	75.377	1.408	114.712	5.952	160.925	7.765	19.879
35 Jawa Timur	339.850	14.676	288.329	7.577	555.362	26.274	1.030.961	50.544	99.071
36 B a n t e n	42.139	1.332	36.180	900	37.966	1.006	61.241	2.088	5.326
J A W A	1.608.021	71.518	1.257.870	63.263	1.867.971	83.561	2.537.688	140.550	358.892
51 B a l i	109.963	3.558	91.549	3.479	93.112	3.537	127.683	5.071	15.645
52 Nusa Tenggara Barat	254.823	14.241	261.660	10.631	408.132	12.990	388.870	11.829	49.691
53 Nusa Tenggara Timur	174.616	6.289	140.727	4.998	219.640	8.805	272.160	10.796	30.888
BALI DAN NUSA TENGGARA	539.402	24.088	493.936	19.108	720.884	25.332	788.713	27.696	96.224
61 Kalimantan Barat	55.240	1.644	69.226	1.946	75.082	2.380	94.296	3.169	9.139
62 Kalimantan Tengah	160.629	4.002	146.472	3.362	80.877	2.488	85.551	2.892	12.744
63 Kalimantan Selatan	106.117	3.041	79.464	2.953	87.064	2.444	93.437	2.999	11.437
64 Kalimantan Timur	135.476	5.068	127.756	3.895	118.450	3.884	178.083	5.332	18.179
KALIMANTAN	457.462	13.755	422.918	12.156	361.473	11.196	451.367	14.392	51.499
71 Sulawesi Utara	26.929	1.015	14.819	571	24.803	1.236	17.084	511	3.333
72 Sulawesi Tengah	34.767	1.558	32.878	827	24.869	1.356	37.180	1.342	5.083
73 Sulawesi Selatan	348.684	10.889	243.095	5.422	165.889	3.474	213.359	4.712	24.497
74 Sulawesi Tenggara	21.204	1.122	7.712	492	34.723	1.794	42.725	2.055	5.463
75 Gorontalo	13.599	214	12.026	204	11.151	222	8.243	152	792
76 Sulawesi Barat	34.189	2.289	62.138	3.929	53.363	1.678	20.022	1.692	9.588
SULAWESI	479.372	17.087	372.668	11.445	314.798	9.760	338.613	10.464	48.756
81 M a l u k u	8.061	382	6.209	384	2.254	129	2.679	89	984
82 Maluku Utara	16.852	540	-	-	-	-	-	-	540
91 Papua Barat	2.336	33	3.418	52	11.899	817	10.268	725	1.627
94 P a p u a	20.124	415	10.322	204	19.815	476	31.285	522	1.617
MALUKU DAN PAPUA	47.373	1.370	19.949	640	33.968	1.422	44.232	1.336	4.768
I N D O N E S I A	3.966.642	156.535	3.295.265	131.268	4.035.702	160.548	4.979.188	227.104	675.455

Tabel 1.11 Produksi dan Banyaknya Tanaman Nenas yang Menghasilkan Menurut Propinsi 2008
Table 1.11 Production and Number of Harvested Plant of Pineapple by Province 2008

Propinsi Province	Triwulan I / Qtr I		Triwulan II / Qtr II		Triwulan III / Qtr III		Triwulan IV / Qtr IV		Total Produksi Total Production (ton)
	Tanaman yang menghasilkan Harvested Plant (Pohon/tree)	Produksi Production (ton)	Tanaman yang menghasilkan Harvested Plant (Pohon/tree)	Produksi Production (ton)	Tanaman yang menghasilkan Harvested Plant (Pohon/tree)	Produksi Production (ton)	Tanaman yang menghasilkan Harvested Plant (Pohon/tree)	Produksi Production (ton)	
(1)	(2)	(3)	(4)	(5)	(6)	(7)	(8)	(9)	(10)
11 Nanggroe Aceh Darussalam	217.176	249	388.366	533	50.199	83	62.642	117	982
12 Sumatera Utara	23.684.904	32.165	4.633.379	9.909	21.241.805	41.035	24.044.209	61.157	144.266
13 Sumatera Barat	132.171	157	208.171	254	115.279	245	127.218	276	932
14 R i a u	12.761.964	13.688	12.425.530	12.965	9.442.747	9.618	9.039.412	9.314	45.585
15 J a m b i	1.503.009	4.415	1.191.145	3.489	1.520.168	4.495	1.547.027	4.205	16.604
16 Sumatera Selatan	16.598.597	20.708	14.124.619	17.019	15.834.564	36.743	14.822.848	22.327	96.797
17 Bengkulu	53.323	124	126.478	176	74.287	171	62.896	154	625
18 Lampung	79.004.129	79.377	114.006.866	114.920	127.667.595	128.136	163.893.649	164.164	486.597
19 Bangka Belitung	1.261.676	3.283	446.759	703	434.352	881	533.547	915	5.782
21 Kepulauan Riau	1.004.118	1.066	968.797	981	958.112	974	952.844	953	3.974
SUMATERA	136.221.067	155.232	148.520.110	160.949	177.339.108	222.381	215.086.292	263.582	802.144
31 DKI Jakarta	1.000	3	-	-	-	-	-	-	3
32 Jawa Barat	53.753.510	107.015	28.671.562	107.690	40.684.962	101.468	48.350.311	96.749	412.922
33 Jawa Tengah	4.453.692	7.361	4.894.159	7.851	6.959.115	9.890	3.909.207	6.260	31.362
34 DI Yogyakarta	65.821	123	39.850	81	69.346	94	74.009	253	551
35 Jawa Timur	10.044.606	29.784	7.595.695	7.681	11.348.531	11.495	56.264.946	62.126	111.086
36 B a n t e n	22.820	59	49.126	97	30.057	61	53.943	88	305
J A W A	68.341.449	144.345	41.250.392	123.400	59.092.011	123.008	108.652.416	165.476	556.229
51 B a l i	172.582	236	76.434	97	135.672	212	309.408	545	1.090
52 Nusa Tenggara Barat	476.883	1.666	160.975	385	568.385	1.033	252.002	517	3.601
53 Nusa Tenggara Timur	480.959	867	284.661	543	636.148	1.289	1.485.106	2.975	5.674
BALI DAN NUSA TENGGARA	1.130.424	2.769	522.070	1.025	1.340.205	2.534	2.046.516	4.037	10.365
61 Kalimantan Barat	2.061.544	2.663	4.021.793	4.715	5.045.401	5.784	5.259.024	7.158	20.320
62 Kalimantan Tengah	3.794.093	3.986	3.656.497	3.810	3.541.641	4.175	3.693.917	4.721	16.692
63 Kalimantan Selatan	547.126	1.206	481.073	1.048	257.846	562	349.373	786	3.602
64 Kalimantan Timur	3.697.053	5.264	696.748	2.023	913.277	1.638	3.448.172	6.094	15.019
KALIMANTAN	10.099.816	13.119	8.856.111	11.596	9.758.165	12.159	12.750.486	18.759	55.633
71 Sulawesi Utara	1.389.608	1.683	671.805	1.260	543.258	811	922.092	1.241	4.995
72 Sulawesi Tengah	77.158	159	83.448	174	54.293	104	124.735	234	671
73 Sulawesi Selatan	357.096	532	210.968	313	279.526	445	207.631	341	1.631
74 Sulawesi Tenggara	27.147	66	15.836	29	75.298	167	72.699	188	450
75 Gorontalo	67.137	79	72.743	80	31.817	46	49.890	63	268
76 Sulawesi Barat	41.242	64	51.870	71	50.723	122	22.379	46	303
SULAWESI	1.959.388	2.583	1.106.670	1.927	1.034.915	1.695	1.399.426	2.113	8.318
81 M a l u k u	41.742	75	29.955	55	17.553	34	27.166	47	211
82 Maluku Utara	5.861	10	-	-	5.240	6	5.240	9	25
91 Papua Barat	3.545	5	1.500	3	19.931	21	23.808	24	53
94 P a p u a	22.776	30	17.668	20	17.668	22	61.284	83	155
MALUKU DAN PAPUA	73.924	120	49.123	78	60.392	83	117.498	163	444
I N D O N E S I A	217.826.068	318.168	200.304.476	298.975	248.624.796	361.860	340.052.634	454.130	1.433.133

Tabel 1.12 **Produksi dan Banyaknya Tanaman Pepaya yang Menghasilkan Menurut Propinsi 2008**
 Table **1.12** **Production and Number of Harvested Plant of Papaya by Province 2008**

Propinsi Province	Triwulan I / Qtr I		Triwulan II / Qtr II		Triwulan III / Qtr III		Triwulan IV / Qtr IV		Total Produksi Total Production (ton)
	Tanaman yang menghasilkan Harvested Plant (Pohon/tree)	Produksi Production (ton)	Tanaman yang menghasilkan Harvested Plant (Pohon/tree)	Produksi Production (ton)	Tanaman yang menghasilkan Harvested Plant (Pohon/tree)	Produksi Production (ton)	Tanaman yang menghasilkan Harvested Plant (Pohon/tree)	Produksi Production (ton)	
(1)	(2)	(3)	(4)	(5)	(6)	(7)	(8)	(9)	(10)
11 Nanggroe Aceh Darussalam	92.025	1.149	93.791	1.268	47.034	936	44.061	940	4.293
12 Sumatera Utara	278.205	6.080	278.846	5.657	239.286	5.488	265.561	6.062	23.287
13 Sumatera Barat	108.161	2.263	108.379	1.527	101.209	2.130	105.255	2.980	8.900
14 R i a u	109.125	1.026	118.663	1.569	117.274	1.430	178.781	2.541	6.566
15 J a m b i	94.425	1.977	297.922	11.271	271.084	11.152	93.941	1.554	25.954
16 Sumatera Selatan	104.243	1.630	73.266	1.389	92.445	1.279	103.336	1.202	5.500
17 Bengkulu	44.146	2.189	43.478	1.789	55.971	2.040	45.351	1.923	7.941
18 Lampung	1.179.698	23.121	1.266.657	23.622	1.305.237	11.614	1.322.493	12.107	70.464
19 Bangka Belitung	29.622	412	30.533	384	24.378	342	29.867	339	1.477
21 Kepulauan Riau	13.373	184	21.473	210	24.688	593	61.182	449	1.436
SUMATERA	2.053.023	40.031	2.333.008	48.686	2.278.606	37.004	2.249.828	30.097	155.818
31 DKI Jakarta	16.125	344	7.821	68	8.182	73	1.863	23	508
32 Jawa Barat	918.740	33.046	891.576	16.870	790.611	18.243	743.963	18.403	86.562
33 Jawa Tengah	1.019.452	14.266	1.025.427	13.769	1.031.168	15.463	1.036.883	15.552	59.050
34 DI Yogyakarta	203.785	2.666	191.568	2.812	170.983	2.801	173.445	2.956	11.235
35 Jawa Timur	1.947.820	38.780	2.195.784	47.260	1.869.919	35.910	2.106.052	88.730	210.680
36 B a n t e n	102.115	1.168	85.787	1.054	82.669	1.051	105.183	1.580	4.853
J A W A	4.208.037	90.270	4.397.963	81.833	3.953.532	73.541	4.167.389	127.244	372.888
51 B a l i	149.707	3.103	152.161	1.901	149.076	2.528	142.297	2.196	9.728
52 Nusa Tenggara Barat	119.381	3.407	112.739	2.036	105.539	1.028	109.807	994	7.465
53 Nusa Tenggara Timur	539.207	12.032	602.343	11.617	778.455	21.678	723.341	18.921	64.248
BALI DAN NUSA TENGGARA	808.295	18.542	867.243	15.554	1.033.070	25.234	975.445	22.111	81.441
61 Kalimantan Barat	49.371	746	57.728	979	52.761	712	52.018	580	3.017
62 Kalimantan Tengah	64.056	707	71.674	697	36.441	377	36.774	655	2.436
63 Kalimantan Selatan	68.327	1.059	74.971	995	71.102	1.151	69.373	1.161	4.366
64 Kalimantan Timur	318.375	9.516	319.169	15.784	270.634	13.737	200.207	8.034	47.071
KALIMANTAN	500.129	12.028	523.542	18.455	430.938	15.977	358.372	10.430	56.890
71 Sulawesi Utara	39.196	1.442	42.484	1.121	53.993	1.357	30.810	1.110	5.030
72 Sulawesi Tengah	31.862	617	38.811	580	34.765	714	53.710	756	2.667
73 Sulawesi Selatan	390.922	11.317	360.229	5.373	317.125	5.755	309.628	5.134	27.579
74 Sulawesi Tenggara	47.187	846	30.205	294	87.231	1.148	76.385	894	3.182
75 Gorontalo	20.514	201	19.690	187	16.224	164	12.215	160	712
76 Sulawesi Barat	17.692	230	23.672	462	22.531	297	9.565	212	1.201
SULAWESI	547.373	14.653	515.091	8.017	531.869	9.435	492.313	8.266	40.371
81 M a l u k u	33.848	1.095	34.240	1.084	18.176	619	26.482	830	3.628
82 Maluku Utara	27.418	950	27.418	1.459	27.418	415	27.418	441	3.265
91 Papua Barat	6.409	49	4.893	81	14.719	444	13.342	436	1.010
94 P a p u a	98.674	725	61.244	484	88.308	802	98.576	577	2.588
MALUKU DAN PAPUA	166.349	2.819	127.795	3.108	148.621	2.280	165.818	2.284	10.491
I N D O N E S I A	8.283.206	178.343	8.764.642	175.653	8.376.636	163.471	8.409.165	200.432	717.899

Tabel 1.13 **Produksi dan Banyaknya Tanaman Pisang yang Menghasilkan Menurut Propinsi 2008**
Table **Production and Number of Harvested Plant of Banana by Province 2008**

Propinsi Province	Triwulan I / Qtr I		Triwulan II / Qtr II		Triwulan III / Qtr III		Triwulan IV / Qtr IV		Total Produksi Total Production (ton)
	Tanaman yang menghasilkan Harvested Plant (Pohon/tree)	Produksi Production (ton)	Tanaman yang menghasilkan Harvested Plant (Pohon/tree)	Produksi Production (ton)	Tanaman yang menghasilkan Harvested Plant (Pohon/tree)	Produksi Production (ton)	Tanaman yang menghasilkan Harvested Plant (Pohon/tree)	Produksi Production (ton)	
(1)	(2)	(3)	(4)	(5)	(6)	(7)	(8)	(9)	(10)
11 Nanggroe Aceh Darussalam	684.528	11.066	600.747	6.922	505.756	5.955	434.135	5.384	29.327
12 Sumatera Utara	2.500.934	41.406	2.610.488	35.801	3.772.335	57.423	4.531.822	98.494	233.124
13 Sumatera Barat	1.186.480	21.666	1.324.881	19.098	1.245.436	18.430	1.271.533	21.739	80.933
14 R i a u	1.001.409	5.188	881.879	6.488	1.089.397	8.498	1.244.178	8.834	29.008
15 J a m b i	428.460	10.595	441.246	8.050	519.264	7.669	527.486	8.208	34.522
16 Sumatera Selatan	4.880.040	97.183	3.918.784	66.990	5.191.519	83.369	3.411.957	72.468	320.010
17 Bengkulu	490.030	18.453	464.803	8.254	505.805	10.788	444.873	14.946	52.441
18 Lampung	7.206.529	174.339	10.423.926	138.921	7.757.808	175.221	8.476.448	154.221	642.702
19 Bangka Belitung	407.184	4.308	283.339	6.616	154.172	1.960	280.143	3.028	15.912
21 Kepulauan Riau	48.806	349	41.803	313	26.213	282	23.301	191	1.135
SUMATERA	18.834.400	384.553	20.991.896	297.453	20.767.705	369.595	20.645.876	387.513	1.439.114
31 DKI Jakarta	37.176	967	29.358	192	38.796	277	10.967	259	1.695
32 Jawa Barat	19.293.947	283.522	17.656.071	449.034	14.556.842	242.302	14.949.806	339.077	1.313.935
33 Jawa Tengah	16.361.613	217.050	16.110.083	200.457	16.127.037	206.731	16.294.893	206.920	831.158
34 DI Yogyakarta	1.205.040	16.999	1.117.351	18.131	852.935	13.077	917.384	12.353	60.560
35 Jawa Timur	21.052.810	316.579	16.370.449	199.454	20.026.679	277.085	19.486.807	288.952	1.082.070
36 B a n t e n	2.974.330	29.273	2.901.017	31.828	2.670.566	24.442	3.712.819	28.928	114.471
J A W A	60.924.916	864.390	54.184.329	899.096	54.272.855	763.914	55.372.676	876.489	3.403.889
51 B a l i	2.798.823	36.222	2.523.454	28.933	2.644.860	35.663	3.004.507	38.058	138.876
52 Nusa Tenggara Barat	1.056.511	21.250	1.428.094	14.518	976.658	11.826	971.385	15.102	62.696
53 Nusa Tenggara Timur	3.095.792	48.536	3.185.933	48.406	2.357.633	42.651	2.607.779	51.749	191.342
BALI DAN NUSA TENGGARA	6.951.126	106.008	7.137.481	91.857	5.979.151	90.140	6.583.671	104.909	392.914
61 Kalimantan Barat	1.160.631	10.263	1.269.324	8.894	1.205.452	39.396	1.396.332	51.155	109.708
62 Kalimantan Tengah	506.403	3.838	485.163	4.372	327.717	4.258	466.840	7.600	20.068
63 Kalimantan Selatan	2.254.419	19.285	1.327.636	39.983	1.639.850	20.549	991.255	11.703	91.520
64 Kalimantan Timur	1.516.095	19.030	1.661.712	21.270	1.431.008	17.543	1.729.237	19.238	77.081
KALIMANTAN	5.437.548	52.416	4.743.835	74.519	4.604.027	81.746	4.583.664	89.696	298.377
71 Sulawesi Utara	763.127	14.578	750.319	13.897	764.120	14.350	650.901	14.099	56.924
72 Sulawesi Tengah	440.714	6.315	492.814	6.438	315.904	6.444	452.640	7.017	26.214
73 Sulawesi Selatan	3.113.015	66.495	3.804.385	62.770	2.873.485	37.801	2.571.225	52.763	219.829
74 Sulawesi Tenggara	391.386	14.279	280.936	6.511	502.139	9.256	433.899	12.953	42.999
75 Gorontalo	299.661	3.013	169.068	1.756	254.431	2.609	99.725	981	8.359
76 Sulawesi Barat	430.457	4.230	586.764	9.720	649.098	5.113	204.973	2.301	21.364
SULAWESI	5.438.360	108.910	6.084.286	101.092	5.359.177	75.573	4.413.363	90.114	375.689
81 M a l u k u	164.407	2.910	88.137	1.960	34.680	476	39.372	647	5.993
82 Maluku Utara	685.314	18.496	685.314	18.496	530.332	18.496	530.121	18.496	73.984
91 Papua Barat	24.291	325	23.904	848	61.044	1.672	58.519	1.656	4.501
94 P a p u a	305.220	2.568	250.466	3.233	218.938	2.722	307.845	1.631	10.154
MALUKU DAN PAPUA	1.179.232	24.299	1.047.821	24.537	844.994	23.366	935.857	22.430	94.632
I N D O N E S I A	98.765.582	1.540.576	94.189.648	1.488.554	91.827.909	1.404.334	92.535.107	1.571.151	6.004.615

Tabel 1.14 **Produksi dan Banyaknya Tanaman Rambutan yang Menghasilkan Menurut Propinsi 2008**
 Table **1.14** *Production and Number of Harvested Plant of Rambutan by Province 2008*

Propinsi Province	Triwulan I / Qtr I		Triwulan II / Qtr II		Triwulan III / Qtr III		Triwulan IV / Qtr IV		Total Produksi Total Production (ton)
	Tanaman yang menghasilkan Harvested Plant (Pohon/tree)	Produksi Production (ton)	Tanaman yang menghasilkan Harvested Plant (Pohon/tree)	Produksi Production (ton)	Tanaman yang menghasilkan Harvested Plant (Pohon/tree)	Produksi Production (ton)	Tanaman yang menghasilkan Harvested Plant (Pohon/tree)	Produksi Production (ton)	
(1)	(2)	(3)	(4)	(5)	(6)	(7)	(8)	(9)	(10)
11 Nanggroe Aceh Darussalam	97.761	1.177	50.843	962	78.479	3.199	200.441	9.573	14.911
12 Sumatera Utara	50.332	3.926	125.118	10.547	182.825	16.053	394.495	37.113	67.639
13 Sumatera Barat	42.827	1.793	103.571	3.796	110.592	4.639	267.625	14.398	24.626
14 R i a u	88.668	1.131	97.962	1.325	156.394	3.386	257.192	6.008	11.850
15 J a m b i	412.403	4.569	6.383	87	15.157	307	497.253	37.713	42.676
16 Sumatera Selatan	249.023	9.176	38.491	626	72.416	2.109	259.708	9.232	21.143
17 Bengkulu	29.781	1.621	56.347	1.976	63.594	3.150	36.548	2.055	8.802
18 Lampung	514.123	21.163	79.928	1.450	96.098	1.331	343.966	9.158	33.102
19 Bangka Belitung	28.866	881	28.860	981	17.810	500	24.452	759	3.121
21 Kepulauan Riau	17.125	186	68.626	663	69.419	986	54.025	610	2.445
SUMATERA	1.530.909	45.623	656.129	22.413	862.784	35.660	2.335.705	126.619	230.315
31 DKI Jakarta	24.700	430	5.335	48	5.605	69	10.154	148	695
32 Jawa Barat	1.624.621	153.346	225.433	23.980	67.413	4.953	1.166.115	93.113	275.392
33 Jawa Tengah	1.634.410	69.467	152.578	3.415	183.375	5.861	1.392.035	42.031	120.774
34 DI Yogyakarta	249.541	16.792	23.043	1.328	211	11	236.705	9.325	27.456
35 Jawa Timur	1.625.432	67.005	208.388	8.743	177.641	8.498	1.141.198	53.599	137.845
36 B a n t e n	188.500	6.031	127.748	1.656	104.298	1.576	366.376	10.404	19.667
J A W A	5.347.204	313.071	742.525	39.170	538.543	20.968	4.312.583	208.620	581.829
51 B a l i	286.055	10.649	31.196	1.017	1.120	28	208.899	6.657	18.351
52 Nusa Tenggara Barat	136.258	4.001	3.573	161	2.478	95	119.956	2.203	6.460
53 Nusa Tenggara Timur	37.102	1.439	30.464	1.550	31.603	1.186	28.808	939	5.114
BALI DAN NUSA TENGGARA	459.415	16.089	65.233	2.728	35.201	1.309	357.663	9.799	29.925
61 Kalimantan Barat	58.927	1.124	123.879	2.164	163.624	2.951	221.969	4.334	10.573
62 Kalimantan Tengah	333.732	8.376	150.971	3.031	89.699	1.492	191.607	6.089	18.988
63 Kalimantan Selatan	344.623	10.707	93.582	2.812	65.601	1.559	187.244	5.175	20.253
64 Kalimantan Timur	251.158	12.086	48.589	722	239.710	21.187	156.748	4.146	38.141
KALIMANTAN	988.440	32.293	417.021	8.729	558.634	27.189	757.568	19.744	87.955
71 Sulawesi Utara	80.689	3.220	11.968	137	119.869	4.683	107.500	5.675	13.715
72 Sulawesi Tengah	27.623	1.087	47.781	1.316	46.285	2.336	49.774	830	5.569
73 Sulawesi Selatan	312.933	8.558	120.540	1.648	93.591	895	190.860	2.264	13.365
74 Sulawesi Tenggara	63.552	4.068	11.157	672	39.690	1.315	35.767	1.525	7.580
75 Gorontalo	887	11	378	4	345	5	880	13	33
76 Sulawesi Barat	21.470	494	18.081	1.776	3.190	220	761	63	2.553
SULAWESI	507.154	17.438	209.905	5.553	302.970	9.454	385.542	10.370	42.815
81 M a l u k u	2.008	64	1.326	82	683	39	225	9	194
82 Maluku Utara	33.215	1.567	-	-	-	-	25.421	1.567	3.134
91 Papua Barat	2.510	20	20	0	20.167	302	24.315	437	759
94 P a p u a	75.060	766	24.380	334	7.243	104	14.202	129	1.333
MALUKU DAN PAPUA	112.793	2.417	25.726	416	28.093	445	64.163	2.142	5.420
I N D O N E S I A	8.945.915	426.931	2.116.539	79.009	2.326.225	95.025	8.213.224	377.294	978.259

Tabel 1.15 **Produksi dan Banyaknya Tanaman Salak yang Menghasilkan Menurut Propinsi 2008**
Table **Production and Number of Harvested Plant of Salacca by Province 2008**

Propinsi Province	Triwulan I / Qtr I		Triwulan II / Qtr II		Triwulan III / Qtr III		Triwulan IV / Qtr IV		Total Produksi Total Production (ton)
	Tanaman yang menghasilkan Harvested Plant (Pohon/tree)	Produksi Production (ton)	Tanaman yang menghasilkan Harvested Plant (Pohon/tree)	Produksi Production (ton)	Tanaman yang menghasilkan Harvested Plant (Pohon/tree)	Produksi Production (ton)	Tanaman yang menghasilkan Harvested Plant (Pohon/tree)	Produksi Production (ton)	
(1)	(2)	(3)	(4)	(5)	(6)	(7)	(8)	(9)	(10)
11 Nanggroe Aceh Darussalam	35.132	49	37.571	49	17.319	49	6.841	40	187
12 Sumatera Utara	11.061.661	78.233	11.941.325	47.670	11.401.727	48.176	11.419.632	55.432	229.511
13 Sumatera Barat	120.021	460	117.533	625	122.908	613	126.951	607	2.305
14 R i a u	61.118	150	61.576	158	61.495	193	54.747	132	633
15 J a m b i	26.449	38	29.186	114	27.424	99	25.500	45	296
16 Sumatera Selatan	47.822	312	43.257	257	49.476	206	76.834	560	1.335
17 Bengkulu	119.394	753	109.990	561	130.192	856	97.913	540	2.710
18 Lampung	392.783	1.507	272.140	2.336	291.362	1.226	293.307	1.643	6.712
19 Bangka Belitung	104.124	358	60.240	222	56.751	227	65.991	260	1.067
21 Kepulauan Riau	24.946	29	22.834	25	53.291	58	1.909	4	116
SUMATERA	11.993.450	81.889	12.695.652	52.017	12.211.945	51.703	12.169.625	59.263	244.872
31 DKI Jakarta	36.989	71	100	1	100	1	-	-	73
32 Jawa Barat	12.850.920	43.627	8.236.786	27.157	3.360.969	10.093	14.674.608	62.593	143.470
33 Jawa Tengah	15.509.607	72.576	13.873.158	53.462	12.895.294	40.186	16.293.370	84.949	251.173
34 DI Yogyakarta	4.620.930	17.595	4.554.483	11.706	4.577.250	16.049	4.632.882	14.579	59.929
35 Jawa Timur	3.530.399	20.382	2.042.379	10.171	1.463.365	8.328	4.130.833	14.406	53.287
36 B a n t e n	56.260	201	49.688	108	22.106	47	180.246	415	771
J A W A	36.605.105	154.452	28.756.594	102.605	22.319.084	74.704	39.911.939	176.942	508.703
51 B a l i	7.664.377	20.370	2.384.610	9.180	4.318.379	14.034	4.178.938	12.829	56.413
52 Nusa Tenggara Barat	3.616	32	3.382	10	612	3	208	1	46
53 Nusa Tenggara Timur	53.226	201	39.141	280	23.168	126	47.335	217	824
BALI DAN NUSA TENGGARA	7.721.219	20.603	2.427.133	9.470	4.342.159	14.163	4.226.481	13.047	57.283
61 Kalimantan Barat	89.754	425	106.424	389	90.172	390	82.324	394	1.598
62 Kalimantan Tengah	109.925	277	113.738	257	34.469	182	28.425	158	874
63 Kalimantan Selatan	55.368	359	55.133	220	46.556	268	43.825	274	1.121
64 Kalimantan Timur	805.932	7.192	835.193	8.671	754.056	7.837	720.717	7.463	31.163
KALIMANTAN	1.060.979	8.253	1.110.488	9.537	925.253	8.677	875.291	8.289	34.756
71 Sulawesi Utara	170.951	1.890	135.139	1.193	102.495	1.207	111.170	1.263	5.553
72 Sulawesi Tengah	15.175	93	20.023	164	14.593	109	20.279	149	515
73 Sulawesi Selatan	361.959	2.199	422.053	2.974	405.576	1.493	416.513	2.287	8.953
74 Sulawesi Tenggara	24.266	134	11.747	77	9.149	48	8.971	63	322
75 Gorontalo	219	1	190	1	195	1	195	0	3
76 Sulawesi Barat	8.296	13	11.568	27	4.880	26	7.424	36	102
SULAWESI	580.866	4.330	600.720	4.436	536.888	2.884	564.552	3.798	15.448
81 M a l u k u	14.453	69	499	2	1.069	8	10.421	43	122
82 Maluku Utara	8.270	100	8.270	100	8.270	100	-	-	300
91 Papua Barat	42.545	120	37.968	126	32.988	102	3.517	9	357
94 P a p u a	40.276	145	26.408	108	35.449	186	123.816	185	624
MALUKU DAN PAPUA	105.544	434	73.145	336	77.776	396	137.754	237	1.403
I N D O N E S I A	58.067.163	269.961	45.663.732	178.401	40.413.105	152.527	57.885.642	261.576	862.465

Tabel 1.16. Produksi dan Banyaknya Tanaman Sawo yang Menghasilkan Menurut Propinsi 2008
Table 1.16. Production and Number of Harvested Plant of Sapodilla/Star Apple by Province 2008

Propinsi Province	Triwulan I / Qtr I		Triwulan II / Qtr II		Triwulan III / Qtr III		Triwulan IV / Qtr IV		Total Produksi Total Production (ton)
	Tanaman yang menghasilkan Harvested Plant (Pohon/tree)	Produksi Production (ton)	Tanaman yang menghasilkan Harvested Plant (Pohon/tree)	Produksi Production (ton)	Tanaman yang menghasilkan Harvested Plant (Pohon/tree)	Produksi Production (ton)	Tanaman yang menghasilkan Harvested Plant (Pohon/tree)	Produksi Production (ton)	
(1)	(2)	(3)	(4)	(5)	(6)	(7)	(8)	(9)	(10)
11 Nanggroe Aceh Darussalam	20.651	688	18.358	668	13.237	488	18.845	675	2.519
12 Sumatera Utara	69.676	2.671	68.370	2.110	35.349	1.701	68.001	4.239	10.721
13 Sumatera Barat	67.234	4.620	62.365	3.776	62.350	4.092	67.574	2.622	15.110
14 R i a u	35.998	679	32.545	697	36.792	854	37.898	772	3.002
15 J a m b i	23.909	592	21.934	570	19.588	590	24.601	766	2.518
16 Sumatera Selatan	56.360	1.782	44.151	1.127	52.506	1.466	55.382	1.485	5.860
17 Bengkulu	15.993	557	19.385	511	18.323	541	16.647	405	2.014
18 Lampung	123.490	3.824	120.528	4.335	127.687	3.650	109.820	3.475	15.284
19 Bangka Belitung	5.104	139	3.109	83	3.423	100	4.393	136	458
21 Kepulauan Riau	2.185	38	1.614	28	1.727	31	1.354	24	121
SUMATERA	420.600	15.590	392.359	13.905	370.982	13.513	404.515	14.599	57.607
31 DKI Jakarta	2.031	45	2.018	40	2.882	54	1.247	26	165
32 Jawa Barat	109.009	5.808	72.721	4.764	68.122	3.447	45.874	4.859	18.878
33 Jawa Tengah	63.212	1.843	71.927	1.909	84.998	2.368	88.691	2.716	8.836
34 DI Yogyakarta	54.626	2.206	31.965	1.423	58.093	2.458	40.147	1.261	7.348
35 Jawa Timur	62.293	1.847	52.135	1.490	83.320	2.858	68.844	1.877	8.072
36 B a n t e n	21.368	502	14.131	404	14.908	365	23.244	711	1.982
J A W A	312.539	12.251	244.897	10.030	312.323	11.550	268.047	11.450	45.281
51 B a l i	23.850	628	30.546	674	33.225	908	39.740	1.216	3.426
52 Nusa Tenggara Barat	38.325	1.378	39.282	1.844	37.593	1.584	43.658	1.809	6.615
53 Nusa Tenggara Timur	4.561	106	4.386	103	12.029	507	3.914	96	812
BALI DAN NUSA TENGGARA	66.736	2.112	74.214	2.621	82.847	2.999	87.312	3.121	10.853
61 Kalimantan Barat	19.121	960	16.666	335	5.234	118	7.327	231	1.644
62 Kalimantan Tengah	8.265	187	8.188	241	6.160	133	6.310	158	719
63 Kalimantan Selatan	26.725	545	16.073	376	24.772	627	30.635	650	2.198
64 Kalimantan Timur	11.288	396	14.813	374	17.718	476	15.011	420	1.666
KALIMANTAN	65.399	2.088	55.740	1.326	53.884	1.354	59.283	1.459	6.227
71 Sulawesi Utara	-	-	-	-	-	-	-	-	-
72 Sulawesi Tengah	783	18	1.098	27	315	12	1.537	36	93
73 Sulawesi Selatan	7.258	142	4.138	134	4.162	171	4.228	86	533
74 Sulawesi Tenggara	316	15	289	13	300	9	332	7	44
75 Gorontalo	15	0	-	-	-	-	-	-	-
76 Sulawesi Barat	104	3	84	2	142	4	99	2	11
SULAWESI	8.476	178	5.609	176	4.919	196	6.196	131	681
81 M a l u k u	-	-	-	-	-	-	-	-	-
82 Maluku Utara	-	-	-	-	-	-	-	-	-
91 Papua Barat	-	-	-	-	-	-	-	-	-
94 P a p u a	-	-	-	-	-	-	-	-	-
MALUKU DAN PAPUA	-	-	-	-	-	-	-	-	-
I N D O N E S I A	873.750	32.219	772.819	28.058	824.955	29.612	825.353	30.760	120.649

Tabel 1.17. Produksi dan Banyaknya Tanaman Sirsak yang Menghasilkan Menurut Propinsi 2008
Table 1.17. Production and Number of Harvested Plant of Soursop by Province 2008

Propinsi Province	Triwulan I / Qtr I		Triwulan II / Qtr II		Triwulan III / Qtr III		Triwulan IV / Qtr IV		Total Produksi Total Production (ton)
	Tanaman yang menghasilkan Harvested Plant (Pohon/tree)	Produksi Production (ton)	Tanaman yang menghasilkan Harvested Plant (Pohon/tree)	Produksi Production (ton)	Tanaman yang menghasilkan Harvested Plant (Pohon/tree)	Produksi Production (ton)	Tanaman yang menghasilkan Harvested Plant (Pohon/tree)	Produksi Production (ton)	
(1)	(2)	(3)	(4)	(5)	(6)	(7)	(8)	(9)	(10)
11 Nanggroe Aceh Darussalam	8.656	99	7.650	81	6.094	64	4.203	67	311
12 Sumatera Utara	19.664	326	18.257	267	16.518	323	17.183	407	1.323
13 Sumatera Barat	4.730	78	4.558	58	5.213	89	5.867	110	335
14 R i a u	10.047	94	8.503	76	9.465	89	10.371	90	349
15 J a m b i	6.912	84	6.709	68	7.279	63	7.164	75	290
16 Sumatera Selatan	27.591	331	21.907	270	22.662	252	22.660	219	1.072
17 Bengkulu	6.225	99	6.636	85	6.199	79	7.988	85	348
18 Lampung	21.119	315	17.935	203	20.915	249	23.145	286	1.053
19 Bangka Belitung	1.240	20	841	13	836	15	901	16	64
21 Kepulauan Riau	2.744	18	2.592	17	2.610	16	2.517	16	67
SUMATERA	108.928	1.464	95.588	1.138	97.791	1.239	101.999	1.371	5.212
31 DKI Jakarta	165	2	495	5	327	7	305	7	21
32 Jawa Barat	182.981	5.163	103.937	3.259	128.965	2.633	155.366	6.188	17.243
33 Jawa Tengah	113.980	1.374	63.846	751	67.479	743	78.508	1.012	3.880
34 DI Yogyakarta	44.021	476	17.261	164	26.573	232	22.686	225	1.097
35 Jawa Timur	202.362	2.992	109.885	1.473	120.323	1.859	129.907	1.950	8.274
36 B a n t e n	25.033	266	22.957	219	20.205	178	35.479	329	992
J A W A	568.542	10.273	318.381	5.871	363.872	5.652	422.251	9.711	31.507
51 B a l i	10.791	84	9.444	73	4.733	48	9.937	68	273
52 Nusa Tenggara Barat	291.738	5.672	103.559	738	87.327	657	207.336	1.485	8.552
53 Nusa Tenggara Timur	63.707	819	60.233	732	59.742	663	57.032	809	3.023
BALI DAN NUSA TENGGARA	366.236	6.575	173.236	1.543	151.802	1.368	274.305	2.362	11.848
61 Kalimantan Barat	8.861	79	11.042	120	10.485	125	9.855	111	435
62 Kalimantan Tengah	9.260	94	7.192	89	5.160	46	4.798	51	280
63 Kalimantan Selatan	26.705	324	32.402	395	32.978	380	32.887	369	1.468
64 Kalimantan Timur	18.818	214	20.483	212	16.809	179	16.951	207	812
KALIMANTAN	63.644	711	71.119	816	65.432	730	64.491	738	2.995
71 Sulawesi Utara	14.530	163	14.868	165	15.010	160	13.476	170	658
72 Sulawesi Tengah	5.672	133	4.409	64	4.575	63	6.601	98	358
73 Sulawesi Selatan	52.538	481	40.618	526	15.203	152	17.740	187	1.346
74 Sulawesi Tenggara	6.951	103	5.554	83	25.465	391	26.392	307	884
75 Gorontalo	1.137	12	798	6	818	6	687	5	29
76 Sulawesi Barat	1.090	11	368	5	682	8	343	4	28
SULAWESI	81.918	903	66.615	849	61.753	780	65.239	771	3.303
81 M a l u k u	3.217	34	2.283	25	300	3	890	11	73
82 Maluku Utara	-	-	-	-	-	-	-	-	-
91 Papua Barat	2.829	17	1.810	11	2.415	20	1.675	18	66
94 P a p u a	986	8	739	7	706	8	1.266	15	38
MALUKU DAN PAPUA	7.032	59	4.832	43	3.421	31	3.831	44	177
I N D O N E S I A	1.196.300	19.985	729.771	10.260	744.071	9.800	932.116	14.997	55.042

Tabel 1.18. Produksi dan Banyaknya Tanaman Markisa yang Menghasilkan Menurut Propinsi 2008
Table 1.18. Production and Number of Harvested Plant of Marquisa by Province 2008

Propinsi Province	Triwulan I / Qtr I		Triwulan II / Qtr II		Triwulan III / Qtr III		Triwulan IV / Qtr IV		Total Produksi Total Production (ton)
	Tanaman yang menghasilkan Harvested Plant (Pohon/tree)	Produksi Production (ton)	Tanaman yang menghasilkan Harvested Plant (Pohon/tree)	Produksi Production (ton)	Tanaman yang menghasilkan Harvested Plant (Pohon/tree)	Produksi Production (ton)	Tanaman yang menghasilkan Harvested Plant (Pohon/tree)	Produksi Production (ton)	
(1)	(2)	(3)	(4)	(5)	(6)	(7)	(8)	(9)	(10)
11 Nanggroe Aceh Darussalam	1.003	37	1.413	34	1.857	11	722	15	97
12 Sumatera Utara	303.865	2.417	301.728	1.881	176.709	1.748	140.841	4.983	11.029
13 Sumatera Barat	1.177.367	29.879	1.180.384	31.940	1.180.348	28.460	1.192.864	28.656	118.935
14 R i a u	533	2	388	2	549	2	752	4	10
15 J a m b i	616	15	674	7	995	6	626	6	34
16 Sumatera Selatan	2.609	11	2.263	22	1.696	6	369	3	42
17 Bengkulu	442	10	323	4	248	3	244	3	20
18 Lampung	510	10	345	6	457	7	851	11	34
19 Bangka Belitung	-	-	-	-	-	-	-	-	-
21 Kepulauan Riau	2.515	13	2.512	13	2.512	10	2.512	11	47
SUMATERA	1.489.460	32.394	1.490.030	33.909	1.365.371	30.253	1.339.781	33.692	130.248
31 DKI Jakarta	15	0	15	0	20	0	-	-	1
32 Jawa Barat	10.174	172	4.235	24	3.864	16	6.206	139	351
33 Jawa Tengah	1.758	25	454	5	1.114	34	1.195	20	84
34 DI Yogyakarta	1.187	4	1.543	5	1.641	6	728	6	21
35 Jawa Timur	1.079	21	253	2	1.007	27	540	13	63
36 B a n t e n	1.842	15	1.489	8	1.359	7	1.912	11	41
J A W A	16.055	237	7.989	44	9.005	90	10.581	189	561
51 B a l i	2.716	18	4.239	32	4.401	31	3.623	25	106
52 Nusa Tenggara Barat	177	5	75	1	394	7	924	6	19
53 Nusa Tenggara Timur	1.995	69	156	1	4.123	73	529	4	147
BALI DAN NUSA TENGGARA	4.888	92	4.470	34	8.918	111	5.076	35	272
61 Kalimantan Barat	60	1	88	1	37	1	58	1	4
62 Kalimantan Tengah	-	-	-	-	-	-	-	-	-
63 Kalimantan Selatan	-	-	-	-	-	-	-	-	-
64 Kalimantan Timur	10	0	15	0	15	0	15	0	1
KALIMANTAN	70	1	103	1	52	1	73	1	5
71 Sulawesi Utara	-	-	-	-	-	-	-	-	-
72 Sulawesi Tengah	-	-	35	1	-	-	-	-	1
73 Sulawesi Selatan	120.713	2.329	234.232	2.364	84.406	810	73.559	627	6.130
74 Sulawesi Tenggara	-	-	-	-	-	-	-	-	-
75 Gorontalo	-	-	-	-	-	-	-	-	-
76 Sulawesi Barat	29.400	504	29.560	95	34.867	111	29.472	95	805
SULAWESI	150.113	2.833	263.827	2.460	119.273	921	103.031	722	6.936
81 M a l u k u	-	-	-	-	-	-	-	-	-
82 Maluku Utara	-	-	-	-	-	-	-	-	-
91 Papua Barat	-	-	-	-	-	-	-	-	-
94 P a p u a	-	-	-	-	-	-	1.085	5	5
MALUKU DAN PAPUA	-	-	-	-	-	-	1.085	5	5
I N D O N E S I A	1.660.586	35.558	1.766.419	36.449	1.502.619	31.377	1.459.627	34.644	138.027

Statistik Tanaman Buah-buahan dan Sayuran Tahunan 2008

Tabel 1.19. Produksi dan Banyaknya Tanaman Sukun yang Menghasilkan Menurut Propinsi 2008
Table 1.19. Production and Number of Harvested Plant of Breadfruit by Province 2008

Propinsi Province	Triwulan I / Qtr I		Triwulan II / Qtr II		Triwulan III / Qtr III		Triwulan IV / Qtr IV		Total Produksi Total Production (ton)
	Tanaman yang menghasilkan Harvested Plant (Pohon/tree)	Produksi Production (ton)	Tanaman yang menghasilkan Harvested Plant (Pohon/tree)	Produksi Production (ton)	Tanaman yang menghasilkan Harvested Plant (Pohon/tree)	Produksi Production (ton)	Tanaman yang menghasilkan Harvested Plant (Pohon/tree)	Produksi Production (ton)	
(1)	(2)	(3)	(4)	(5)	(6)	(7)	(8)	(9)	(10)
11 Nanggroe Aceh Darussalam	2.985	83	7.853	133	2.364	58	5.237	223	497
12 Sumatera Utara	6.273	320	3.329	161	2.968	132	5.035	213	826
13 Sumatera Barat	1.839	77	2.308	68	1.560	41	1.936	45	231
14 R i a u	8.710	124	7.640	143	8.066	257	12.130	228	752
15 J a m b i	13.736	463	24.524	1.229	25.286	1.373	20.947	1.042	4.107
16 Sumatera Selatan	44.046	862	35.641	766	35.869	838	42.749	1.149	3.615
17 Bengkulu	5.046	272	6.653	254	5.813	255	5.163	223	1.004
18 Lampung	54.611	1.225	38.020	987	45.860	1.064	63.481	1.283	4.559
19 Bangka Belitung	3.740	128	3.248	79	3.840	94	3.305	85	386
21 Kepulauan Riau	4.180	57	1.033	14	3.156	56	1.074	26	153
SUMATERA	145.166	3.611	130.249	3.834	134.782	4.168	161.057	4.517	16.130
31 DKI Jakarta	1.045	14	1.319	18	1.246	19	197	5	56
32 Jawa Barat	142.031	8.449	83.752	5.205	114.539	9.864	152.332	15.483	39.001
33 Jawa Tengah	148.296	5.187	96.300	2.757	167.407	5.730	209.713	6.123	19.797
34 DI Yogyakarta	102.291	1.980	79.495	1.118	101.333	2.220	48.839	1.840	7.158
35 Jawa Timur	89.237	3.284	53.665	1.546	61.399	2.212	67.373	1.881	8.923
36 B a n t e n	28.415	780	22.047	432	52.802	791	114.862	1.740	3.743
J A W A	511.315	19.694	336.578	11.076	498.726	20.836	593.316	27.072	78.678
51 B a l i	2.194	48	1.698	31	724	51	723	45	175
52 Nusa Tenggara Barat	2.341	89	1.099	43	999	32	965	25	189
53 Nusa Tenggara Timur	21.376	504	13.620	310	34.297	1.100	12.232	300	2.214
BALI DAN NUSA TENGGARA	25.911	641	16.417	384	36.020	1.183	13.920	370	2.578
61 Kalimantan Barat	8.643	142	8.979	155	8.100	169	8.685	168	634
62 Kalimantan Tengah	10.725	332	9.838	321	7.661	215	6.041	187	1.055
63 Kalimantan Selatan	17.650	627	16.238	314	18.095	564	16.638	518	2.023
64 Kalimantan Timur	37.001	1.561	28.956	816	21.754	676	32.123	777	3.830
KALIMANTAN	74.019	2.662	64.011	1.606	55.610	1.624	63.487	1.650	7.542
71 Sulawesi Utara	2.200	80	3.625	94	3.929	99	3.629	98	371
72 Sulawesi Tengah	2.144	44	1.953	52	2.064	43	4.788	107	246
73 Sulawesi Selatan	107.037	3.040	15.853	519	33.052	790	32.066	847	5.196
74 Sulawesi Tenggara	7.504	211	2.259	40	9.218	321	13.249	370	942
75 Gorontalo	482	9	128	2	187	3	155	3	17
76 Sulawesi Barat	3.758	107	3.830	140	2.422	158	653	44	449
SULAWESI	123.125	3.491	27.648	847	50.872	1.414	54.540	1.469	7.221
81 M a l u k u	5.448	268	5.173	212	855	32	1.089	78	590
82 Maluku Utara	5.430	234	5.525	234	-	-	-	-	468
91 Papua Barat	1.672	20	490	6	3.040	91	1.986	45	162
94 P a p u a	9.588	102	11.589	248	1.512	24	6.258	35	409
MALUKU DAN PAPUA	22.138	624	22.777	700	5.407	147	9.333	158	1.629
I N D O N E S I A	901.674	30.723	597.680	18.447	781.417	29.372	895.653	35.236	113.778

Tabel 1.20. Produksi dan Banyaknya Tanaman Apel yang Menghasilkan Menurut Propinsi 2008
Table 1.20. Production and Number of Harvested Plant of Apple by Province 2008

Propinsi Province	Triwulan I / Qtr I		Triwulan II / Qtr II		Triwulan III / Qtr III		Triwulan IV / Qtr IV		Total Produksi Total Production (ton)
	Tanaman yang menghasilkan Harvested Plant (Pohon/tree)	Produksi Production (ton)	Tanaman yang menghasilkan Harvested Plant (Pohon/tree)	Produksi Production (ton)	Tanaman yang menghasilkan Harvested Plant (Pohon/tree)	Produksi Production (ton)	Tanaman yang menghasilkan Harvested Plant (Pohon/tree)	Produksi Production (ton)	
(1)	(2)	(3)	(4)	(5)	(6)	(7)	(8)	(9)	(10)
11 Nanggroe Aceh Darussalam	-	-	-	-	-	-	-	-	-
12 Sumatera Utara	-	-	-	-	-	-	-	-	-
13 Sumatera Barat	-	-	-	-	-	-	-	-	-
14 R i a u	-	-	-	-	-	-	-	-	-
15 J a m b i	-	-	-	-	-	-	-	-	-
16 Sumatera Selatan	-	-	-	-	-	-	-	-	-
17 Bengkulu	-	-	-	-	-	-	-	-	-
18 Lampung	-	-	-	-	-	-	-	-	-
19 Bangka Belitung	-	-	-	-	-	-	-	-	-
21 Kepulauan Riau	-	-	-	-	-	-	-	-	-
SUMATERA	-	-	-	-	-	-	-	-	-
31 DKI Jakarta	-	-	-	-	-	-	-	-	-
32 Jawa Barat	20	1	20	0	30	0	30	0	2
33 Jawa Tengah	-	-	-	-	-	-	-	-	-
34 DI Yogyakarta	-	-	-	-	-	-	-	-	-
35 Jawa Timur	1.090.769	22.819	1.857.875	57.462	1.915.325	27.739	2.241.192	52.762	160.782
36 B a n t e n	-	-	-	-	-	-	-	-	-
J A W A	1.090.789	22.820	1.857.895	57.462	1.915.355	27.739	2.241.222	52.762	160.784
51 B a l i	-	-	-	-	-	-	-	-	-
52 Nusa Tenggara Barat	605	2	-	-	-	-	605	8	10
53 Nusa Tenggara Timur	-	-	-	-	-	-	-	-	-
BALI DAN NUSA TENGGARA	605	2	-	-	-	-	605	8	10
61 Kalimantan Barat	-	-	-	-	-	-	-	-	-
62 Kalimantan Tengah	-	-	-	-	-	-	-	-	-
63 Kalimantan Selatan	-	-	-	-	-	-	-	-	-
64 Kalimantan Timur	-	-	-	-	-	-	-	-	-
KALIMANTAN	-	-	-	-	-	-	-	-	-
71 Sulawesi Utara	-	-	-	-	-	-	-	-	-
72 Sulawesi Tengah	-	-	-	-	-	-	-	-	-
73 Sulawesi Selatan	-	-	-	-	-	-	-	-	-
74 Sulawesi Tenggara	-	-	-	-	-	-	-	-	-
75 Gorontalo	-	-	-	-	-	-	-	-	-
76 Sulawesi Barat	-	-	-	-	-	-	-	-	-
SULAWESI	-	-	-	-	-	-	-	-	-
81 M a l u k u	-	-	-	-	-	-	-	-	-
82 Maluku Utara	-	-	-	-	-	-	-	-	-
91 Papua Barat	-	-	-	-	-	-	-	-	-
94 P a p u a	-	-	-	-	-	-	-	-	-
MALUKU DAN PAPUA	-	-	-	-	-	-	-	-	-
I N D O N E S I A	1.091.394	22.822	1.857.895	57.462	1.915.355	27.739	2.241.827	52.770	160.794

Statistik Tanaman Buah-buahan dan Sayuran Tahunan 2008

Tabel 1.21. Produksi dan Banyaknya Tanaman Anggur yang Menghasilkan Menurut Propinsi 2008
Table 1.21. Production and Number of Harvested Plant of Grape by Province 2008

Propinsi Province	Triwulan I / Qtr I		Triwulan II / Qtr II		Triwulan III / Qtr III		Triwulan IV / Qtr IV		Total Produksi Total Production (ton)
	Tanaman yang menghasilkan Harvested Plant (Pohon/tree)	Produksi Production (ton)	Tanaman yang menghasilkan Harvested Plant (Pohon/tree)	Produksi Production (ton)	Tanaman yang menghasilkan Harvested Plant (Pohon/tree)	Produksi Production (ton)	Tanaman yang menghasilkan Harvested Plant (Pohon/tree)	Produksi Production (ton)	
(1)	(2)	(3)	(4)	(5)	(6)	(7)	(8)	(9)	(10)
11 Nanggroe Aceh Darussalam	-	-	-	-	-	-	-	-	-
12 Sumatera Utara	-	-	-	-	-	-	-	-	-
13 Sumatera Barat	-	-	-	-	-	-	-	-	-
14 R i a u	-	-	-	-	-	-	-	-	-
15 J a m b i	-	-	-	-	-	-	-	-	-
16 Sumatera Selatan	-	-	-	-	-	-	-	-	-
17 Bengkulu	-	-	-	-	-	-	-	-	-
18 Lampung	-	-	-	-	-	-	-	-	-
19 Bangka Belitung	-	-	-	-	-	-	-	-	-
21 Kepulauan Riau	-	-	-	-	-	-	-	-	-
SUMATERA	-	-	-	-	-	-	-	-	-
31 DKI Jakarta	-	-	-	-	-	-	-	-	-
32 Jawa Barat	12	0	51	1	40	0	173	3	4
33 Jawa Tengah	660	2	26	1	323	3	566	6	12
34 DI Yogyakarta	-	-	-	-	-	-	-	-	-
35 Jawa Timur	1.926	39	468	11	6.967	101	5.338	68	219
36 B a n t e n	-	-	-	-	-	-	-	-	-
J A W A	2.598	41	545	13	7.330	104	6.077	77	235
51 B a l i	391.664	5.948	295.586	3.757	282.605	4.994	347.630	7.027	21.726
52 Nusa Tenggara Barat	6	0	99	1	74	1	84	1	3
53 Nusa Tenggara Timur	-	-	-	-	-	-	-	-	-
BALI DAN NUSA TENGGARA	391.670	5.948	295.685	3.758	282.679	4.995	347.714	7.028	21.729
61 Kalimantan Barat	-	-	-	-	-	-	-	-	-
62 Kalimantan Tengah	-	-	-	-	-	-	-	-	-
63 Kalimantan Selatan	-	-	-	-	-	-	-	-	-
64 Kalimantan Timur	-	-	-	-	-	-	-	-	-
KALIMANTAN	-	-	-	-	-	-	-	-	-
71 Sulawesi Utara	-	-	-	-	-	-	-	-	-
72 Sulawesi Tengah	167	2	-	-	118	1	206	3	6
73 Sulawesi Selatan	-	-	-	-	-	-	-	-	-
74 Sulawesi Tenggara	-	-	-	-	-	-	-	-	-
75 Gorontalo	-	-	-	-	-	-	-	-	-
76 Sulawesi Barat	-	-	-	-	-	-	-	-	-
SULAWESI	167	2	-	-	118	1	206	3	6
81 M a l u k u	-	-	-	-	-	-	-	-	-
82 Maluku Utara	-	-	-	-	-	-	-	-	-
91 Papua Barat	-	-	-	-	-	-	-	-	-
94 P a p u a	-	-	-	-	-	-	-	-	-
MALUKU DAN PAPUA	-	-	-	-	-	-	-	-	-
I N D O N E S I A	394.435	5.991	296.230	3.771	290.127	5.100	353.997	7.108	21.970

Statistik Tanaman Buah-buahan dan Sayuran Tahunan 2008

Tabel 1.22. Produksi dan Banyaknya Tanaman Melinjo yang Menghasilkan Menurut Propinsi 2008
Table 1.22. Production and Number of Harvested Plant of Melinjo by Province 2008

Propinsi Province	Triwulan I / Qtr I		Triwulan II / Qtr II		Triwulan III / Qtr III		Triwulan IV / Qtr IV		Total Produksi Total Production (ton)
	Tanaman yang menghasilkan Harvested Plant (Pohon/tree)	Produksi Production (ton)	Tanaman yang menghasilkan Harvested Plant (Pohon/tree)	Produksi Production (ton)	Tanaman yang menghasilkan Harvested Plant (Pohon/tree)	Produksi Production (ton)	Tanaman yang menghasilkan Harvested Plant (Pohon/tree)	Produksi Production (ton)	
(1)	(2)	(3)	(4)	(5)	(6)	(7)	(8)	(9)	(10)
11 Nanggroe Aceh Darussalam	281.921	3.337	174.316	1.701	219.814	2.067	125.355	1.267	8.372
12 Sumatera Utara	48.396	1.261	70.032	1.823	71.997	1.904	63.865	1.714	6.702
13 Sumatera Barat	163.761	3.255	154.575	1.811	140.531	1.475	145.716	1.404	7.945
14 R i a u	47.280	435	52.371	484	53.445	513	51.881	497	1.929
15 J a m b i	84.065	1.264	80.706	996	85.139	804	74.309	805	3.869
16 Sumatera Selatan	39.617	515	26.877	296	27.159	332	38.572	415	1.558
17 Bengkulu	30.866	791	28.097	459	31.563	449	32.441	441	2.140
18 Lampung	197.330	2.876	127.169	1.919	172.483	2.981	192.281	2.705	10.481
19 Bangka Belitung	19.821	225	10.707	148	6.534	81	9.343	99	553
21 Kepulauan Riau	4.649	45	1.400	16	3.894	37	1.396	16	114
SUMATERA	917.706	14.004	726.250	9.653	812.559	10.643	735.159	9.363	43.663
31 DKI Jakarta	1.220	16	2.393	25	1.022	13	762	12	66
32 Jawa Barat	838.947	15.256	444.134	12.790	453.875	13.858	432.837	16.346	58.250
33 Jawa Tengah	745.627	10.385	748.985	9.696	910.163	13.278	1.006.768	16.483	49.842
34 DI Yogyakarta	344.619	6.153	363.386	5.243	408.005	6.919	493.072	7.143	25.458
35 Jawa Timur	323.170	4.838	328.479	4.138	302.599	3.782	500.385	6.280	19.038
36 B a n t e n	482.305	5.704	632.562	6.562	497.930	5.104	787.533	8.681	26.051
J A W A	2.735.888	42.352	2.519.939	38.454	2.573.594	42.954	3.221.357	54.945	178.705
51 B a l i	5.048	70	8.353	94	3.460	52	6.301	71	287
52 Nusa Tenggara Barat	36.593	621	31.796	313	28.174	281	47.796	457	1.672
53 Nusa Tenggara Timur	3.446	83	5.599	56	2.550	26	4.194	45	210
BALI DAN NUSA TENGGARA	45.087	774	45.748	463	34.184	359	58.291	573	2.169
61 Kalimantan Barat	15.100	178	13.091	151	11.665	150	17.029	194	673
62 Kalimantan Tengah	18.725	219	22.509	283	18.442	177	12.342	146	825
63 Kalimantan Selatan	10.706	131	6.031	61	7.305	71	9.457	101	364
64 Kalimantan Timur	39.330	751	35.971	667	23.129	481	39.305	640	2.539
KALIMANTAN	83.861	1.279	77.602	1.162	60.541	879	78.133	1.081	4.401
71 Sulawesi Utara	3.900	102	5.140	108	4.255	110	3.085	89	409
72 Sulawesi Tengah	1.904	19	1.580	23	996	14	968	15	71
73 Sulawesi Selatan	900	22	1.005	13	1.005	11	1.468	15	61
74 Sulawesi Tenggara	4.629	87	2.604	46	3.190	40	3.497	64	237
75 Gorontalo	515	5	15	0	515	5	15	0	10
76 Sulawesi Barat	-	-	-	-	-	-	-	-	-
SULAWESI	11.848	235	10.344	190	9.961	180	9.033	183	788
81 M a l u k u	890	16	657	13	451	8	361	8	45
82 Maluku Utara	13.606	205	13.606	205	13.606	205	13.606	205	820
91 Papua Barat	133	1	192	2	296	3	46	1	7
94 P a p u a	886	7	225	2	223	2	3.844	45	56
MALUKU DAN PAPUA	15.515	229	14.680	222	14.576	218	17.857	259	928
I N D O N E S I A	3.809.905	58.873	3.394.563	50.144	3.505.415	55.233	4.119.830	66.404	230.654

Tabel

1.23.

Produksi dan Banyaknya Tanaman Petai yang Menghasilkan Menurut Propinsi 2008

Table

Production and Number of Harvested Plant of Twisted Cluster Bean by Province 2008

Propinsi Province	Triwulan I / Qtr I		Triwulan II / Qtr II		Triwulan III / Qtr III		Triwulan IV / Qtr IV		Total Produksi Total Production (ton)
	Tanaman yang menghasilkan Harvested Plant (Pohon/tree)	Produksi Production (ton)	Tanaman yang menghasilkan Harvested Plant (Pohon/tree)	Produksi Production (ton)	Tanaman yang menghasilkan Harvested Plant (Pohon/tree)	Produksi Production (ton)	Tanaman yang menghasilkan Harvested Plant (Pohon/tree)	Produksi Production (ton)	
(1)	(2)	(3)	(4)	(5)	(6)	(7)	(8)	(9)	(10)
11 Nanggroe Aceh Darussalam	582	8	1.329	22	2.641	77	1.537	46	153
12 Sumatera Utara	50.022	822	70.788	1.102	49.643	920	62.091	1.113	3.957
13 Sumatera Barat	20.979	633	41.475	1.055	38.134	1.053	43.060	1.276	4.017
14 R i a u	13.960	198	11.592	161	9.818	151	9.876	171	681
15 J a m b i	19.811	513	5.571	143	12.835	205	20.874	644	1.505
16 Sumatera Selatan	40.785	869	20.292	302	30.496	447	46.754	751	2.369
17 Bengkulu	6.429	259	10.759	339	12.562	415	11.926	392	1.405
18 Lampung	107.784	3.162	58.480	1.292	76.880	1.577	108.709	2.418	8.449
19 Bangka Belitung	8.797	148	5.403	122	4.851	109	9.374	177	556
21 Kepulauan Riau	12.719	185	10.795	154	11.129	165	1.154	49	553
SUMATERA	281.868	6.797	236.484	4.692	248.989	5.119	315.355	7.037	23.645
31 DKI Jakarta	50	1	100	5	122	5	72	1	12
32 Jawa Barat	362.445	15.261	185.042	10.411	498.612	29.501	414.173	30.022	85.195
33 Jawa Tengah	767.654	17.590	119.641	3.336	496.762	9.221	683.904	15.442	45.589
34 DI Yogyakarta	60.177	1.937	44.256	1.497	62.739	1.702	68.884	1.489	6.625
35 Jawa Timur	439.356	12.998	86.629	1.685	277.747	7.401	545.945	14.474	36.558
36 B a n t e n	60.905	1.526	34.033	616	74.422	1.133	169.380	3.067	6.342
J A W A	1.690.587	49.313	469.701	17.550	1.410.404	48.963	1.882.358	64.495	180.321
51 B a l i	-	-	-	-	-	-	-	-	-
52 Nusa Tenggara Barat	-	-	-	-	-	-	-	-	-
53 Nusa Tenggara Timur	1.533	51	228	5	303	6	1.762	34	96
BALI DAN NUSA TENGGARA	1.533	51	228	5	303	6	1.762	34	96
61 Kalimantan Barat	19.984	309	16.434	258	19.613	363	32.495	478	1.408
62 Kalimantan Tengah	19.252	345	18.623	338	11.790	170	16.114	224	1.077
63 Kalimantan Selatan	16.296	343	13.546	254	14.711	314	25.722	502	1.413
64 Kalimantan Timur	11.498	374	6.348	135	3.739	102	6.977	216	827
KALIMANTAN	67.030	1.371	54.951	985	49.853	949	81.308	1.420	4.725
71 Sulawesi Utara	100	5	-	-	-	-	-	-	5
72 Sulawesi Tengah	564	7	340	10	238	5	691	24	46
73 Sulawesi Selatan	113.155	2.186	36.356	441	59.151	1.000	44.694	553	4.180
74 Sulawesi Tenggara	3.233	76	1.775	33	3.969	156	3.057	113	378
75 Gorontalo	149	2	15	0	10	0	20	0	2
76 Sulawesi Barat	185	4	10	0	193	5	35	1	10
SULAWESI	117.386	2.280	38.496	484	63.561	1.166	48.497	691	4.621
81 M a l u k u	665	17	77	3	158	4	29	0	24
82 Maluku Utara	860	14	860	14	-	-	875	14	42
91 Papua Barat	9	0	142	2	122	2	19	1	5
94 P a p u a	845	11	157	2	37	0	3.018	44	57
MALUKU DAN PAPUA	2.379	42	1.236	21	317	6	3.941	59	128
I N D O N E S I A	2.160.783	59.854	801.096	23.737	1.773.427	56.209	2.333.221	73.736	213.536

Tabel 1.24. Produksi dan Banyaknya Tanaman Jengkol yang Menghasilkan Menurut Propinsi 2008
Table 1.24. Production and Number of Harvested Plant of Jengkol by Province 2008

Propinsi Province	Triwulan I / Qtr I		Triwulan II / Qtr II		Triwulan III / Qtr III		Triwulan IV / Qtr IV		Total Produksi Total Production (ton)
	Tanaman yang menghasilkan Harvested Plant (Pohon/tree)	Produksi Production (ton)	Tanaman yang menghasilkan Harvested Plant (Pohon/tree)	Produksi Production (ton)	Tanaman yang menghasilkan Harvested Plant (Pohon/tree)	Produksi Production (ton)	Tanaman yang menghasilkan Harvested Plant (Pohon/tree)	Produksi Production (ton)	
(1)	(2)	(3)	(4)	(5)	(6)	(7)	(8)	(9)	(10)
11 Nanggroe Aceh Darussalam	493	68	1.393	20	1.473	42	431	6	136
12 Sumatera Utara	15.129	557	17.787	551	15.567	708	11.712	894	2.710
13 Sumatera Barat	12.422	651	40.903	2.302	41.694	1.996	58.404	2.489	7.438
14 R i a u	3.242	164	8.883	80	8.664	744	7.274	105	1.093
15 J a m b i	55.837	1.138	26.380	844	31.436	620	70.026	1.356	3.958
16 Sumatera Selatan	98.597	3.768	25.703	382	56.649	420	67.644	1.153	5.723
17 Bengkulu	30.778	2.361	56.728	4.442	36.978	3.587	35.741	2.831	13.221
18 Lampung	128.755	5.204	93.043	4.152	128.977	2.409	114.947	4.004	15.769
19 Bangka Belitung	4.685	25	4.175	95	5.475	123	6.111	259	502
21 Kepulauan Riau	3.906	38	2.353	23	3.784	31	2.571	50	142
SUMATERA	353.844	13.974	277.348	12.891	330.697	10.680	374.861	13.147	50.692
31 DKI Jakarta	-	-	11.300	82	-	-	-	-	82
32 Jawa Barat	102.186	5.100	33.462	986	44.928	2.133	77.238	5.029	13.248
33 Jawa Tengah	73.988	2.112	32.501	2.183	65.466	1.261	152.649	5.873	11.429
34 DI Yogyakarta	480	14	450	11	-	-	10	0	25
35 Jawa Timur	-	-	8	0	8	0	38	0	1
36 B a n t e n	10.081	77	10.927	45	25.425	228	72.956	681	1.031
J A W A	186.735	7.303	88.648	3.307	135.827	3.622	302.891	11.583	25.816
51 B a l i	-	-	-	-	-	-	-	-	-
52 Nusa Tenggara Barat	-	-	-	-	-	-	-	-	-
53 Nusa Tenggara Timur	-	-	-	-	-	-	-	-	-
BALI DAN NUSA TENGGARA	-	-	-	-	-	-	-	-	-
61 Kalimantan Barat	87.966	1.233	85.043	166	19.379	314	19.950	804	2.517
62 Kalimantan Tengah	5.681	165	4.497	163	4.737	52	3.531	21	401
63 Kalimantan Selatan	3.999	149	1.864	46	1.798	79	5.269	93	367
64 Kalimantan Timur	3.144	45	1.827	18	1.689	21	1.503	31	115
KALIMANTAN	100.790	1.592	93.231	393	27.603	466	30.253	949	3.400
71 Sulawesi Utara	820	8	400	4	642	4	-	-	16
72 Sulawesi Tengah	-	-	15	2	139	0	340	8	10
73 Sulawesi Selatan	900	1	714	70	9	0	13	1	72
74 Sulawesi Tenggara	-	-	-	-	-	-	-	-	-
75 Gorontalo	-	-	18	0	-	-	-	-	0
76 Sulawesi Barat	-	-	16	2	3	0	-	-	2
SULAWESI	1.720	9	1.163	78	793	4	353	9	100
81 M a l u k u	-	-	-	-	-	-	-	-	-
82 Maluku Utara	-	-	-	-	-	-	-	-	-
91 Papua Barat	-	-	-	-	-	-	-	-	-
94 P a p u a	-	-	-	-	-	-	-	-	-
MALUKU DAN PAPUA	-	-	-	-	-	-	-	-	-
I N D O N E S I A	643.089	22.878	460.390	16.669	494.920	14.772	708.358	25.688	80.008

Tabel 2.1 **Produksi Tanaman Buah-Buahan dan Sayuran Tahunan Triwulan I Tahun 1998 - 2008**
Table 2.1 **Production of Annual Fruit and Vegetable Plants First Quarter in 1998 - 2008**

KOMODITI COMMODITY	PRODUKSI BUAH-BUAHAN DAN SAYURAN TAHUNAN (TON) / PRODUCTION OF FRUIT AND VEGETABLE PLANTS (TONS)										
	TRIWULAN I / QUARTER I										
	1998	1999	2000	2001	2002	2003	2004	2005	2006	2007	2008
(1)	(2)	(3)	(4)	(5)	(6)	(7)	(8)	(9)	(10)	(11)	(12)
ALPUKAT/ AVOCADO	50.384	41.685	52.879	45.085	69.513	104.147	67.630	63.065	70.109	65.165	77.064
BELIMBING / STAR FRUIT	13.639	12.445	10.719	15.042	13.217	25.899	17.790	14.808	16.817	14.610	19.126
DUKU/LANGSAT/KOKOSAN / DUKU	53.053	10.631	81.091	45.581	95.521	123.688	66.512	95.258	41.826	104.572	56.543
DURIAN / DURIAN	119.483	40.339	114.250	116.201	147.956	227.064	166.728	214.823	183.783	288.790	247.234
JAMBU BIJI / GUAVA	43.767	46.693	37.632	49.802	45.171	80.062	64.797	55.525	54.180	50.204	65.080
JAMBU AIR / ROSE APPLE	8.540	11.365	12.702	17.607	21.940	27.991	20.404	23.454	21.813	16.230	20.573
JERUK SIAM/KEPROK / ORANGE/TANGERINE	-	-	-	-	-	-	463.083	516.213	626.928	563.866	503.173
JERUK BESAR / POMELO	-	-	-	-	-	-	17.669	11.523	14.842	12.278	16.817
JERUK / ORANGE	123.870	91.016	182.309	140.859	212.007	307.555	480.755	527.737	641.770	576.143	519.990
MANGGA / MANGO	103.487	76.214	85.892	114.057	164.417	167.972	82.993	120.939	104.451	124.565	243.119
MANGGIS / MANGOSTEEN	14.786	1.605	16.544	7.989	22.221	39.153	23.310	31.705	13.590	70.290	22.125
NANGKA/CEMPEDAK / JACKFRUIT	81.868	69.985	88.789	96.776	120.641	178.386	156.140	154.544	159.040	129.888	156.535
NENAS / PINEAPPLE	91.792	95.535	101.930	135.779	143.776	127.994	82.730	168.999	146.519	194.808 ^{*)}	318.168
PEPAYA / PAPAYA	109.962	133.653	140.934	123.583	174.999	159.494	211.252	133.585	167.478	148.550	178.343
PISANG / BANANA	837.655	1.056.477	950.366	1.170.139	1.099.363	1.163.383	1.506.313	1.384.956	1.321.432	1.385.951	1.540.576
RAMBUTAN / RAMBUTAN	164.043	72.841	156.367	165.288	155.231	349.490	216.063	344.312	316.077	442.772	426.931
SALAK / SALACCA	73.101	161.748	145.551	187.456	143.330	229.440	307.519	276.105	404.093	191.259	269.961
SAWO / SAPODILLA/STAR APPLE	12.155	13.330	13.170	16.816	17.338	22.508	18.265	23.764	23.061	23.692	32.219
SIRSAK / SOURSOUP	12.600	14.858	12.255	13.164	15.573	30.387	31.600	22.057	29.108	13.092	19.985
MARKISA / MARQUISA	-	-	-	-	-	27.372	9.653	26.531	19.835	18.052	35.558
SUKUN / BREADFRUIT	9.575	7.041	12.073	13.146	14.944	18.267	15.547	17.595	21.935	18.902	30.723
MELINJO / MELINJO	27.838	28.257	26.953	37.495	42.371	50.135	58.631	48.907	56.514	46.257	58.873
PETAJ / TWISTED CLUSTER BEAN	34.869	11.280	20.830	17.195	16.358	58.261	37.173	44.923	31.768	65.793	59.854

^{*)} Revisi Data Nenas Tahun 2007/ Revised pineapple data in 2007
 Statistik Tanaman Buah-buahan dan Sayuran Tahunan 2008

Tabel
Table

2.2

Produksi Tanaman Buah-Buahan dan Sayuran Tahunan Triwulan II Tahun 1998 - 2008
Production of Annual Fruit and Vegetable Plants Second Quarter in 1998 - 2008

KOMODITI COMMODITY	PRODUKSI BUAH-BUAHAN DAN SAYURAN TAHUNAN (TON) / PRODUCTION OF FRUIT AND VEGETABLE PLANTS (TONS)										
	TRIWULAN II / QUARTER II										
	1998	1999	2000	2001	2002	2003	2004	2005	2006	2007	2008
(1)	(2)	(3)	(4)	(5)	(6)	(7)	(8)	(9)	(10)	(11)	(12)
ALPUKAT/ AVOCADO	24.669	19.023	28.632	26.297	47.109	38.399	34.762	38.383	37.538	28.657	41.348
BELIMBING / STAR FRUIT	8.842	11.999	11.244	12.148	11.228	12.780	16.876	18.199	17.042	13.954	15.963
DUKU/LANGSAT/KOKOSAN / DUKU	18.656	8.325	10.100	14.828	40.983	32.089	18.426	24.175	21.353	32.416	17.564
DURIAN / DURIAN	24.735	34.492	23.654	38.311	74.507	91.492	49.259	73.122	94.687	76.200	74.614
JAMBU BIJI / GUAVA	38.693	32.586	22.914	26.519	26.683	54.042	42.171	34.851	41.395	34.647	45.747
JAMBU AIR / ROSE APPLE	10.246	11.516	16.819	14.100	17.100	26.791	25.200	19.804	24.979	14.136	21.174
JERUK SIAM/KEPROK / ORANGE/TANGERINE	-	-	-	-	-	-	630.787	650.326	824.651	634.660	893.928
JERUK BESAR / POMELO	-	-	-	-	-	-	41.559	34.224	43.324	31.856	31.857
JERUK / ORANGE	127.121	114.105	223.653	240.161	271.487	422.690	672.346	684.549	867.975	666.515	925.785
MANGGA / MANGO	38.984	64.676	54.475	137.107	101.307	150.281	81.210	69.607	88.247	96.303	205.720
MANGGIS / MANGOSTEEN	2.823	1.749	2.898	3.663	7.526	9.334	7.575	10.770	5.747	20.586	9.413
NANGKA/CEMPEDAK / JACKFRUIT	59.539	62.408	58.832	84.288	89.048	113.622	151.375	170.989	116.456	95.144	131.268
NENAS / PINEAPPLE	73.780	80.486	80.242	84.921	130.263	201.820	58.219	128.330	135.987	454.971 ^{*)}	298.975
PEPAYA / PAPAYA	167.371	107.361	104.159	167.598	142.764	155.840	168.613	138.677	154.458	142.548	175.653
PISANG / BANANA	783.695	796.044	793.065	1.174.968	1.051.417	911.977	1.070.559	1.157.232	1.251.570	1.344.261	1.488.554
RAMBUTAN / RAMBUTAN	19.266	19.937	13.931	24.114	51.333	69.621	28.616	65.066	50.856	41.520	79.009
SALAK / SALACCA	62.811	143.612	111.762	216.609	174.991	241.985	175.139	181.547	133.033	89.977	178.401
SAWO / SAPODILLA/STAR APPLE	10.545	11.944	13.619	15.168	14.561	18.118	18.886	18.582	19.455	23.845	28.058
SIRSAK / SOURSOUP	9.982	11.817	7.279	11.507	12.669	11.709	19.438	14.632	15.017	9.382	10.260
MARKISA / MARQUISA	-	-	-	-	-	12.065	29.127	25.641	35.470	24.880	36.449
SUKUN / BREADFRUIT	3.244	13.870	5.152	9.057	9.616	11.279	11.087	14.094	18.843	14.018	18.447
MELINJO / MELINJO	25.369	32.422	33.037	37.233	38.835	64.743	48.971	45.982	51.467	42.823	50.144
PETAJ / TWISTED CLUSTER BEAN	4.513	4.914	4.010	7.937	7.361	14.157	11.388	11.886	17.245	20.483	23.737

*) Revisi Data Nenas Tahun 2007/ Revised pineapple data in 2007
Statistik Tanaman Buah-buahan dan Sayuran Tahunan 2008

Tabel
Table 2.3

Produksi Tanaman Buah-Buahan dan Sayuran Tahunan Triwulan III Tahun 1998 - 2008
Production of Annual Fruit and Vegetable Plants Third Quarter in 1998 - 2008

KOMODITI COMMODITY	PRODUKSI BUAH-BUAHAN DAN SAYURAN TAHUNAN (TON) / PRODUCTION OF FRUIT AND VEGETABLE PLANTS (TONS)										
	TRIWULAN III / QUARTER III										
	1998	1999	2000	2001	2002	2003	2004	2005	2006	2007	2008
(1)	(2)	(3)	(4)	(5)	(6)	(7)	(8)	(9)	(10)	(11)	(12)
ALPUKAT/ AVOCADO	23.880	26.624	30.015	32.647	45.193	43.300	38.151	28.596	38.630	31.550	42.293
BELIMBING / STAR FRUIT	11.757	8.727	11.426	13.043	14.090	14.909	21.492	15.972	16.240	16.829	18.509
DUKU/LANGSAT/KOKOSAN / DUKU	11.545	8.401	12.493	16.104	32.729	23.729	11.980	19.683	29.220	19.624	19.736
DURIAN / DURIAN	27.853	45.959	28.828	52.212	83.591	91.396	78.573	101.509	96.887	57.167	97.261
JAMBU BIJI / GUAVA	27.967	22.140	22.148	26.331	41.265	51.416	49.717	42.542	45.462	45.779	46.487
JAMBU AIR / ROSE APPLE	13.588	15.994	12.328	21.751	24.238	28.873	32.335	35.111	36.960	26.437	32.374
JERUK SIAM/KEPROK / ORANGE/TANGERINE	-	-	-	-	-	-	363.498	522.603	570.241	637.427	509.444
JERUK BESAR / POMELO	-	-	-	-	-	-	8.960	9.924	18.194	19.044	16.053
JERUK / ORANGE	144.559	73.189	116.088	168.965	299.014	458.300	372.459	532.527	588.435	656.400	525.497
MANGGA / MANGO	61.068	271.647	196.796	246.342	386.354	514.434	370.139	329.259	454.245	384.349	807.765
MANGGIS / MANGOSTEEN	1.855	2.758	1.350	3.962	7.465	9.298	7.008	8.812	9.114	8.583	8.592
NANGKA/CEMPEDAK / JACKFRUIT	81.773	65.106	57.358	90.320	121.632	168.687	176.110	168.556	137.901	144.243	160.548
NENAS / PINEAPPLE	82.916	75.049	71.488	140.119	92.174	213.816	206.655	343.439	367.795	363.242 ^{*)}	361.860
PEPAYA / PAPAYA	102.135	108.424	77.221	105.538	132.759	170.515	187.615	122.886	149.844	160.602	163.471
PISANG / BANANA	712.576	945.907	837.313	947.884	1.009.513	984.160	1.114.743	1.319.391	1.231.444	1.238.376	1.404.334
RAMBUTAN / RAMBUTAN	28.451	20.293	15.143	29.086	61.915	79.039	88.133	53.194	50.851	62.288	95.025
SALAK / SALACCA	60.962	66.902	47.644	129.646	289.899	271.917	157.701	109.836	130.119	301.463	152.527
SAWO / SAPODILLA/STAR APPLE	11.284	10.456	9.559	14.827	16.284	18.806	22.246	19.917	27.140	25.228	29.612
SIRSAK / SOURSOUP	6.906	9.269	5.945	10.366	12.500	11.720	12.887	18.575	13.867	13.445	9.800
MARKISA / MARQUISA	-	-	-	-	-	11.374	6.879	15.757	25.506	27.256	31.377
SUKUN / BREADFRUIT	5.610	5.570	4.187	6.235	9.537	13.241	19.919	18.171	16.158	21.366	29.372
MELINJO / MELINJO	37.759	21.025	26.285	36.369	35.354	62.110	38.005	33.474	47.961	52.782	55.233
PETAJ / TWISTED CLUSTER BEAN	4.688	12.436	8.170	11.069	10.430	13.823	30.297	24.419	29.394	24.825	56.209

*) Revisi Data Nenas Tahun 2007/ Revised pineapple data in 2007
Statistik Tanaman Buah-buahan dan Sayuran Tahunan 2008

Tabel
Table

2.4

Produksi Tanaman Buah-buahan dan Sayuran Tahunan Triwulan IV Tahun 1998 - 2008
Production of Annual Fruit and Vegetable Plants Fourth Quarter in 1998 - 2008

KOMODITI COMMODITY	PRODUKSI BUAH-BUAHAN DAN SAYURAN TAHUNAN (TON) / PRODUCTION OF FRUIT AND VEGETABLE PLANTS (TONS)										
	TRIWULAN IV / QUARTER IV										
	1998	1999	2000	2001	2002	2003	2004	2005	2006	2007	2008
(1)	(2)	(3)	(4)	(5)	(6)	(7)	(8)	(9)	(10)	(11)	(12)
ALPUKAT/ AVOCADO	32.017	23.561	783	37.674	76.367	70.113	81.231	97.533	93.186	76.263	83.510
BELIMBING / STAR FRUIT	13.352	6.480	398	12.924	18.218	13.673	21.959	16.988	20.199	14.591	18.799
DUKU/LANGSAT/KOKOSAN / DUKU	8.890	10.940	1.202	36.558	39.117	53.580	49.149	24.273	65.256	21.414	64.806
DURIAN / DURIAN	38.045	52.615	5.960	140.394	219.010	331.879	381.342	176.750	372.491	172.685	263.214
JAMBU BIJI / GUAVA	38.035	12.285	2.079	34.946	49.001	53.587	53.635	45.592	55.143	48.844	54.946
JAMBU AIR / ROSE APPLE	17.510	10.511	754	19.603	34.018	31.554	39.637	32.336	44.896	37.212	37.410
JERUK SIAM/KEPROK / ORANGE/TANGERINE	-	-	-	-	-	-	537.388	461.077	458.032	715.682	484.466
JERUK BESAR / POMELO	-	-	-	-	-	-	8.135	8.129	9.331	11.071	11.894
JERUK / ORANGE	95.387	70.331	6.824	141.448	185.624	341.279	545.524	469.206	467.363	726.753	496.360
MANGGA / MANGO	396.520	246.737	24.311	425.788	750.828	693.787	903.323	893.079	975.054	1.213.402	848.481
MANGGIS / MANGOSTEEN	4.047	4.575	297	10.198	24.843	21.288	24.224	13.424	44.183	13.263	38.544
NANGKA/CEMPEDAK / JACKFRUIT	130.801	68.323	7.570	143.695	205.863	233.959	227.170	218.604	270.507	232.654	227.104
NENAS / PINEAPPLE	78.468	49.164	1.202	134.149	189.375	133.459	362.314	284.314	777.480	382.545 ^{*)}	454.130
PEPAYA / PAPAYA	110.480	72.413	4.109	103.852	154.672	140.896	165.131	153.509	171.671	169.824	200.432
PISANG / BANANA	842.823	374.411	47.715	1.007.431	1.224.091	1.177.635	1.182.824	1.316.028	1.233.026	1.485.638	1.571.151
RAMBUTAN / RAMBUTAN	66.119	89.762	5.845	132.387	208.462	317.288	377.045	213.007	383.293	159.243	377.294
SALAK / SALACCA	156.374	85.091	1.634	147.544	159.795	185.271	160.616	370.442	194.705	223.180	261.576
SAWO / SAPODILLA/STAR APPLE	12.775	8.934	1.342	16.200	21.296	24.445	28.634	21.523	37.513	28.498	30.760
SIRSAK / SOURSOUP	10.870	4.920	761	11.914	12.232	14.610	18.413	20.503	26.381	19.879	14.997
MARKISA / MARQUISA	-	-	-	-	-	21.088	13.775	14.963	38.872	36.600	34.644
SUKUN / BREADFRUIT	7.387	6.403	1.096	12.598	13.452	19.645	20.441	23.777	31.403	37.728	35.236
MELINJO / MELINJO	36.170	21.492	5.554	58.805	51.324	67.876	64.023	82.473	83.267	63.866	66.404
PETAJ / TWISTED CLUSTER BEAN	9.738	7.378	6.122	21.606	28.545	47.858	56.857	44.360	69.861	67.579	73.736

^{*)} Revisi Data Nenas Tahun 2007/ Revised pineapple data in 2007
 Statistik Tanaman Buah-buahan dan Sayuran Tahunan 2008

Tabel
Table

2.5

Produksi Tanaman Buah-Buahan dan Sayuran Tahunan Tahun 1998 - 2008
Production of Annual Fruit and Vegetable Plants in 1998 - 2008

KOMODITI COMMODITY	PRODUKSI BUAH-BUAHAN DAN SAYURAN TAHUNAN (TON) / PRODUCTION OF FRUIT AND VEGETABLE PLANTS (TONS)										
	TAHUN / YEAR										
	1998	1999	2000	2001	2002	2003	2004	2005	2006	2007	2008
(1)	(2)	(3)	(4)	(5)	(6)	(7)	(8)	(9)	(10)	(11)	(12)
ALPUKAT/ AVOCADO	130.950	110.893	112.309	141.703	238.182	255.959	221.774	227.577	239.463	201.635	244.215
BELIMBING / STAR FRUIT	47.590	39.651	33.787	53.157	56.753	67.261	78.117	65.967	70.298	59.984	72.397
DUKU/LANGSAT/KOKOSAN / DUKU	92.144	38.297	104.886	113.071	208.350	233.086	146.067	163.389	157.655	178.026	158.649
DURIAN / DURIAN	210.116	173.405	172.692	347.118	525.064	741.831	675.902	566.204	747.848	594.842	682.323
JAMBU BIJI / GUAVA	148.462	113.704	84.773	137.598	162.120	239.107	210.320	178.510	196.180	179.474	212.260
JAMBU AIR / ROSE APPLE	49.884	49.386	42.603	73.061	97.296	115.209	117.576	110.705	128.648	94.015	111.495
JERUK SIAM/KEPROK / ORANGE/TANGERINE	-	-	-	-	-	-	1.994.756	2.150.219	2.479.852	2.551.635	2.391.011
JERUK BESAR / POMELO	-	-	-	-	-	-	76.323	63.800	85.691	74.249	76.621
JERUK / ORANGE	490.937	348.641	528.874	691.433	968.132	1.529.824	2.071.079	2.214.019	2.565.543	2.625.884	2.467.632
MANGGA / MANGO	600.059	659.274	361.474	923.294	1.402.906	1.526.474	1.437.665	1.412.884	1.621.997	1.818.619	2.105.085
MANGGIS / MANGOSTEEN	23.511	10.687	21.089	25.812	62.055	79.073	62.117	64.711	72.634	112.722	78.674
NANGKA/CEMPEDAK / JACKFRUIT	353.981	265.822	212.549	415.079	537.184	694.654	710.795	712.693	683.904	601.929	675.455
NENAS / PINEAPPLE	326.956	300.234	254.862	494.968	555.588	677.089	709.918	925.082	1.427.781	1.395.566 ^{*)}	1.433.133
PEPAYA / PAPAYA	489.948	421.851	326.423	500.571	605.194	626.745	732.611	548.657	643.451	621.524	717.899
PISANG / BANANA	3.176.749	3.172.839	2.628.459	4.300.422	4.384.384	4.177.155	4.874.439	5.177.607	5.037.472	5.454.226	6.004.615
RAMBUTAN / RAMBUTAN	277.879	202.833	191.286	350.875	476.941	815.438	709.857	675.579	801.077	705.823	978.259
SALAK / SALACCA	353.248	457.353	306.591	681.255	768.015	928.613	800.975	937.930	861.950	805.879	862.465
SAWO / SAPODILLA/STAR APPLE	46.759	44.664	37.690	63.011	69.479	83.877	88.031	83.786	107.169	101.263	120.649
SIRSAK / SOURSOUP	40.358	40.864	26.240	46.951	52.974	68.426	82.338	75.767	84.373	55.798	55.042
MARKISA / MARQUISA	-	-	-	-	-	71.899	59.434	82.892	119.683	106.788	138.027
SUKUN / BREADFRUIT	25.816	32.884	22.508	41.036	47.549	62.432	66.994	73.637	88.339	92.014	113.778
MELINJO / MELINJO	127.136	103.196	91.829	169.902	167.884	244.864	209.630	210.836	239.209	205.728	230.654
PETAJ / TWISTED CLUSTER BEAN	53.808	36.008	39.132	57.807	62.694	134.099	135.715	125.588	148.268	178.680	213.536

**) Revisi Data Nenas Tahun 2007/ Revised pineapple data in 2007*
Statistik Tanaman Buah-buahan dan Sayuran Tahunan 2008

DATA

MENCERDASKAN BANGSA



BADAN PUSAT STATISTIK

Jl. dr. Sutomo No. 6-8 Jakarta 10710
Telp. : (021) 3841195, 3842508, 3810291-4, Fax. : (021) 3857046
Homepage : <http://www.bps.go.id> E-mail : bpsHQ@bps.go.id