

**Proyeksi
Penduduk Kabupaten/Kota
Provinsi Riau**

2010-2020



**BADAN PUSAT STATISTIK
UNITED NATIONS POPULATION FUND**

JAKARTA 2015



BADAN PUSAT STATISTIK



**Proyeksi
Penduduk Kabupaten/Kota
Provinsi Riau**

2010-2020



**PROYEKSI PENDUDUK KABUPATEN/KOTA
TAHUN 2010 – 2020 PROVINSI RIAU**

Pengarah:

Drs. Razali Ritonga, MA

Tim Teknis:

Dr. Indra Murty Surbakti, MA; Poetrijanti, S.Si; Dendi Handiyatmo SST, M.Si;
Hermawan Agustina, S.Kom;

Penyusun/Penulis:

Elfrida Zoraya, S.Si

Ikhsan Fahmi, SST

Pengolah Data:

Parwoto SST, M.Stat

Layout:

Sri Wahyuni, SST, SE, M.Si

<http://www.bps.go.id>

KATA PENGANTAR

Proyeksi Penduduk Indonesia tahun 2010 - 2035 yang merupakan proyeksi penduduk untuk tingkat nasional dan provinsi telah diterbitkan pada tahun 2013. Untuk memenuhi kebutuhan data penduduk pada tingkat kabupaten/kota maka disusun proyeksi ini berdasarkan hasil Sensus Penduduk 2010 dan sesuai dengan asumsi penghitungan proyeksi nasional dan provinsi. Adapun metode yang digunakan memanfaatkan tren pertumbuhan penduduk sejak tahun 2000, dimana data kabupaten/kota sudah tersedia.

Publikasi Proyeksi Kabupaten/Kota disusun untuk periode 2010 - 2020 dengan tujuan untuk menunjang perencanaan pada tingkat kabupaten/kota di masa kini dan mendatang. Periode yang disampaikan cukup singkat dengan pertimbangan agar tren yang digunakan tidak terlalu menyimpang, sehingga hasil proyeksi ini masih dianggap realistis. Dengan demikian, untuk saat ini Badan Pusat Statistik telah menyediakan data proyeksi penduduk tingkat nasional, provinsi, dan kabupaten/kota yang dapat dimanfaatkan oleh semua pengguna data.

Penyusunan buku ini merupakan hasil kerja sama antara BPS dan UNFPA. Kami mengucapkan terima kasih kepada semua pihak yang telah membantu penyusunan buku ini. Semoga bermanfaat dan dapat memenuhi kebutuhan semua pihak yang memerlukan, khususnya bagi pihak yang berminat pada masalah sosial dan kependudukan.

Jakarta, Juni 2015

Kepala Badan Pusat Statistik,



Dr. Suryamin, M.Sc

<http://www.bps.go.id>

DAFTAR ISI

	Halaman
KATA PENGANTAR	iii
DAFTAR ISI	v
BAB I. PENDAHULUAN	1
BAB II. METODOLOGI	3
LAMPIRAN	
Tabel I.1 Proyeksi Penduduk Menurut Kabupaten/Kota dan Jenis Kelamin Tahun 2010 - 2020	7
Tabel I.2 Rasio Jenis Kelamin Menurut Kabupaten/Kota Tahun 2010 - 2020	10
Tabel I.3 Rasio Ketergantungan Menurut Kabupaten/Kota Tahun 2010 - 2020.....	11
Tabel I.4 Persentase Penduduk Perkotaan Menurut Kabupaten/Kota Tahun 2010 - 2020	12
Tabel I.5 Persentase Penduduk Lansia Menurut Kabupaten/Kota Tahun 2010 - 2020..	13
Gambar I Piramida Penduduk Menurut Kabupaten/Kota Tahun 2010 - 2020.....	14
Tabel II Proyeksi Penduduk Menurut Jenis Kelamin dan Kelompok Umur Tahun 2010 - 2020	26

<http://www.bps.go.id>

BAB I

PENDAHULUAN

Informasi mengenai jumlah penduduk untuk wilayah kabupaten/kota pada suatu waktu tertentu dibutuhkan dalam perencanaan program dan penentuan kebijakan di wilayah tersebut. Ketersediaan data penduduk dapat dipenuhi dari hasil sensus penduduk ataupun survei tentang kependudukan namun sayangnya tidak setiap tahun tersedia. Oleh karena itu, perlu dibuat suatu perkiraan mengenai jumlah penduduk untuk wilayah kabupaten/kota untuk mengisi kekosongan pada tahun-tahun tertentu atau untuk masa yang akan datang. Ketersediaan data penduduk selain jumlahnya juga dilengkapi dengan karakteristik jenis kelamin dan umur.

Secara nasional dan pada tingkat provinsi informasi penduduk masa yang datang diproyeksikan menggunakan metode komponen, dimana metode tersebut mempertimbangkan pengaruh kelahiran, kematian, dan perpindahan. Untuk tingkat kabupaten/kota dilakukan estimasi penduduk dengan mempertimbangkan laju pertumbuhan untuk masing-masing kabupaten/kota, dimana jumlahnya dipagu dari hasil proyeksi provinsinya. Metode estimasi yang digunakan untuk memperkirakan penduduk masa yang akan datang menggunakan metode geometrik. Pemilihan metode ini didasarkan kesesuaian pertambahan secara geometrik dengan perkembangan jumlah penduduk dan disadari bahwa belum dapat dilakukannya proyeksi komponen untuk kabupaten/kota karena komponen pertumbuhan belum tersedia lengkap.

Proyeksi penduduk kabupaten/kota menurut kelompok umur, dan jenis kelamin yang disajikan dalam publikasi ini mencakup kurun waktu sepuluh tahun, mulai tahun 2010 sampai dengan 2020. Pembuatan proyeksi dengan kurun waktu singkat ini dimaksudkan agar hasilnya dapat digunakan untuk berbagai keperluan terutama perencanaan di masa datang.

<http://www.bps.go.id>

BAB II

METODOLOGI

Estimasi penduduk dengan metode geometrik menggunakan asumsi bahwa jumlah penduduk akan bertambah secara geometrik menggunakan dasar perhitungan bunga majemuk. Laju pertumbuhan penduduk (*rate of growth*) dianggap sama untuk setiap tahun. Berikut formula yang digunakan pada metode geometrik:

$$P_t = P_0(1+r)^t$$

$$r = \left(\frac{P_t}{P_0}\right)^{\frac{1}{t}} - 1$$

dimana:

- P_t = jumlah penduduk pada tahun t
- P_0 = jumlah penduduk pada tahun awal
- r = laju pertumbuhan penduduk
- t = periode waktu antara tahun dasar dan tahun t (dalam tahun)

Data yang dibutuhkan:

- Jumlah penduduk Indonesia hasil proyeksi penduduk 2010 - 2020 yang dirinci menurut provinsi.
- Jumlah penduduk kabupaten/kota hasil SP2000, SP2010, khusus untuk kabupaten/kota di Provinsi Aceh dan Pulau Nias menggunakan data hasil SPAN2005.

Tahapan menghitung proyeksi penduduk kabupaten/kota:

1. Menentukan sumber data dari hasil sensus penduduk dan menyiapkan dua data penduduk untuk tahun yang berbeda pada suatu wilayah yang akan diestimasi.
2. Menghitung rata-rata laju pertumbuhan penduduk (LPP) per tahun dengan metode geometrik berdasarkan jumlah penduduk dari dua data.

3. Melakukan proses prorata, agar penjumlahan penduduk untuk semua kabupaten/kota menjadi sama dengan penduduk provinsi (penduduk provinsi sebagai kontrol).
4. Jumlah penduduk per kabupaten/kota ini selanjutnya akan digunakan sebagai kontrol untuk menghitung jumlah penduduk menurut kota/desa, jenis kelamin, maupun menurut kelompok umur.
5. Estimasi penduduk untuk karakteristik jenis kelamin diolah terlebih dahulu, kemudian dilanjutkan dengan estimasi penduduk perkotaan dan perdesaan.
6. Melakukan proses iterasi untuk penduduk kabupaten/kota menurut jenis kelamin dan kelompok umur, dengan jumlah penduduk provinsi sebagai kontrol.
7. Untuk kabupaten/kota pemekaran yang pada saat sensus belum terbentuk, data ditelusuri menggunakan data SP2000, SPAN2005, dan SP2010.

LAMPIRAN

<http://www.tips.go.id>

Tabel I.1.1
 PROYEKSI PENDUDUK
 MENURUT KABUPATEN/KOTA DAN JENIS KELAMIN
 TAHUN 2010 - 2020

RIAU

LAKI-LAKI

KABUPATEN/KOTA	2010	2011	2012	2013	2014	2015	2016	2017	2018	2019	2020
(1)	(2)	(3)	(4)	(5)	(6)	(7)	(8)	(9)	(10)	(11)	(12)
KUANTAN SINGINGI	150.816	151.395	155.523	157.597	159.480	161.377	163.213	164.769	166.372	167.794	169.174
INDRAGIRI HULU	187.896	191.261	197.295	201.555	205.907	210.219	214.402	218.496	222.518	226.505	230.404
INDRAGIRI HILIR	344.792	347.543	347.619	352.183	356.791	361.315	366.043	370.603	375.236	379.805	384.327
PELALAWAN	156.709	169.421	174.719	184.113	193.732	203.753	214.268	225.234	236.404	247.994	260.021
S I A K	194.981	201.382	207.710	213.938	220.122	226.311	232.553	238.837	244.985	251.317	257.392
KAMPAR	355.981	365.595	376.984	387.096	397.107	407.228	417.085	427.065	436.940	446.693	456.276
ROKAN HULU	246.116	260.672	268.799	280.317	292.022	304.050	316.506	329.047	341.765	354.914	368.181
BENGKALIS	257.435	258.926	266.899	271.227	275.390	279.255	283.225	286.865	290.382	293.804	297.011
ROKAN HILIR	286.183	295.330	304.379	313.251	322.117	331.027	339.900	348.782	357.682	366.420	375.110
KEPULAUAN MERANTI	90.479	90.967	91.295	91.938	92.403	93.017	93.488	93.961	94.577	95.110	95.727
KOTA PEKANBARU	464.311	477.699	492.557	505.769	519.515	533.217	546.400	559.917	573.206	586.299	599.272
KOTA DUMAI	131.235	133.645	137.715	140.776	143.900	146.792	149.791	152.731	155.638	158.287	161.068
JUMLAH	2.866.934	2.943.836	3.021.494	3.099.760	3.178.486	3.257.561	3.336.874	3.416.307	3.495.705	3.574.942	3.653.963

Tabel I.1.2
 PROYEKSI PENDUDUK
 MENURUT KABUPATEN/KOTA DAN JENIS KELAMIN
 TAHUN 2010 - 2020

RIAU

PEREMPUAN

KABUPATEN/KOTA	2010	2011	2012	2013	2014	2015	2016	2017	2018	2019	2020
(1)	(2)	(3)	(4)	(5)	(6)	(7)	(8)	(9)	(10)	(11)	(12)
KUANTAN SINGINGI	142.498	143.073	147.108	149.121	151.139	152.899	154.722	156.447	158.041	159.522	160.904
INDRAGIRI HULU	177.525	180.813	186.519	190.799	194.994	199.212	203.331	207.401	211.416	215.284	219.127
INDRAGIRI HILIR	325.707	328.355	328.800	333.347	337.823	342.419	346.991	351.631	356.160	360.793	365.486
PELALAWAN	147.888	160.118	165.150	174.097	183.489	193.237	203.230	213.554	224.376	235.628	247.053
S I A K	184.108	190.378	196.383	202.360	208.377	214.530	220.499	226.577	232.685	238.679	244.807
KAMPAR	336.198	345.641	356.522	366.280	376.064	385.777	395.617	405.322	414.897	424.424	433.935
ROKAN HULU	232.380	246.407	254.225	265.166	276.554	288.228	299.960	312.161	324.645	337.206	350.140
BENGKALIS	243.200	244.678	252.490	256.691	260.748	264.732	268.458	272.216	275.846	279.199	282.419
ROKAN HILIR	270.392	279.089	288.024	296.528	305.116	313.653	322.342	330.881	339.536	348.077	356.673
KEPULAUAN MERANTI	85.510	86.037	86.292	86.901	87.491	88.078	88.664	89.336	89.795	90.406	90.902
KOTA PEKANBARU	438.727	451.548	465.795	478.905	491.952	504.901	518.166	531.171	544.153	557.060	569.798
KOTA DUMAI	123.861	126.268	130.307	133.313	136.209	139.175	142.117	144.907	147.654	150.525	153.098
JUMLAH	2.707.994	2.782.405	2.857.615	2.933.508	3.009.956	3.086.841	3.164.097	3.241.604	3.319.204	3.396.803	3.474.342

Tabel I.1.3
 PROYEKSI PENDUDUK
 MENURUT KABUPATEN/KOTA DAN JENIS KELAMIN
 TAHUN 2010 - 2020

RIAU

LAKI-LAKI + PEREMPUAN

KABUPATEN/KOTA	2010	2011	2012	2013	2014	2015	2016	2017	2018	2019	2020
(1)	(2)	(3)	(4)	(5)	(6)	(7)	(8)	(9)	(10)	(11)	(12)
KUANTAN SINGINGI	293.314	294.468	302.631	306.718	310.619	314.276	317.935	321.216	324.413	327.316	330.078
INDRAGIRI HULU	365.421	372.074	383.814	392.354	400.901	409.431	417.733	425.897	433.934	441.789	449.531
INDRAGIRI HILIR	670.499	675.898	676.419	685.530	694.614	703.734	713.034	722.234	731.396	740.598	749.813
PELALAWAN	304.597	329.539	339.869	358.210	377.221	396.990	417.498	438.788	460.780	483.622	507.074
S I A K	379.089	391.760	404.093	416.298	428.499	440.841	453.052	465.414	477.670	489.996	502.199
KAMPAR	692.179	711.236	733.506	753.376	773.171	793.005	812.702	832.387	851.837	871.117	890.211
ROKAN HULU	478.496	507.079	523.024	545.483	568.576	592.278	616.466	641.208	666.410	692.120	718.321
BENGKALIS	500.635	503.604	519.389	527.918	536.138	543.987	551.683	559.081	566.228	573.003	579.430
ROKAN HILIR	556.575	574.419	592.403	609.779	627.233	644.680	662.242	679.663	697.218	714.497	731.783
KEPULAUAN MERANTI	175.989	177.004	177.587	178.839	179.894	181.095	182.152	183.297	184.372	185.516	186.629
KOTA PEKANBARU	903.038	929.247	958.352	984.674	1.011.467	1.038.118	1.064.566	1.091.088	1.117.359	1.143.359	1.169.070
KOTA DUMAI	255.096	259.913	268.022	274.089	280.109	285.967	291.908	297.638	303.292	308.812	314.166
JUMLAH	5.574.928	5.726.241	5.879.109	6.033.268	6.188.442	6.344.402	6.500.971	6.657.911	6.814.909	6.971.745	7.128.305

Tabel I.2
RASIO JENIS KELAMIN
MENURUT KABUPATEN/KOTA
TAHUN 2010 - 2020

RIAU

KABUPATEN/KOTA	2010	2011	2012	2013	2014	2015	2016	2017	2018	2019	2020
(1)	(2)	(3)	(4)	(5)	(6)	(7)	(8)	(9)	(10)	(11)	(12)
KUANTAN SINGINGI	105,84	105,82	105,72	105,68	105,52	105,54	105,49	105,32	105,27	105,19	105,14
INDRAGIRI HULU	105,84	105,78	105,78	105,64	105,60	105,53	105,44	105,35	105,25	105,21	105,15
INDRAGIRI HILIR	105,86	105,84	105,72	105,65	105,61	105,52	105,49	105,40	105,36	105,27	105,16
PELALAWAN	105,96	105,81	105,79	105,75	105,58	105,44	105,43	105,47	105,36	105,25	105,25
S I A K	105,91	105,78	105,77	105,72	105,64	105,49	105,47	105,41	105,29	105,29	105,14
KAMPAR	105,88	105,77	105,74	105,68	105,60	105,56	105,43	105,36	105,31	105,25	105,15
ROKAN HULU	105,91	105,79	105,73	105,71	105,59	105,49	105,52	105,41	105,27	105,25	105,15
BENGKALIS	105,85	105,82	105,71	105,66	105,62	105,49	105,50	105,38	105,27	105,23	105,17
ROKAN HILIR	105,84	105,82	105,68	105,64	105,57	105,54	105,45	105,41	105,34	105,27	105,17
KEPULAUAN MERANTI	105,81	105,73	105,80	105,80	105,61	105,61	105,44	105,18	105,33	105,20	105,31
KOTA PEKANBARU	105,83	105,79	105,75	105,61	105,60	105,61	105,45	105,41	105,34	105,25	105,17
KOTA DUMAI	105,95	105,84	105,69	105,60	105,65	105,47	105,40	105,40	105,41	105,16	105,21
JUMLAH	105,87	105,80	105,73	105,67	105,60	105,53	105,46	105,39	105,32	105,24	105,17

Tabel I.3
RASIO KETERGANTUNGAN
MENURUT KABUPATEN/KOTA
TAHUN 2010 - 2020

RIAU

KABUPATEN/KOTA	2010	2011	2012	2013	2014	2015	2016	2017	2018	2019	2020
(1)	(2)	(3)	(4)	(5)	(6)	(7)	(8)	(9)	(10)	(11)	(12)
KUANTAN SINGINGI	53,71	53,01	52,41	51,88	51,40	50,98	50,55	50,14	49,79	49,49	49,25
INDRAGIRI HULU	53,28	52,61	52,04	51,53	51,07	50,65	50,22	49,78	49,40	49,05	48,73
INDRAGIRI HILIR	51,32	50,66	50,10	49,59	49,14	48,74	48,33	47,92	47,56	47,23	46,97
PELALAWAN	54,62	53,99	53,45	52,98	52,55	52,13	51,70	51,27	50,87	50,50	50,13
S I A K	57,87	57,14	56,53	55,98	55,48	55,01	54,53	54,05	53,61	53,19	52,80
KAMPAR	56,96	56,26	55,67	55,14	54,67	54,23	53,77	53,32	52,92	52,55	52,22
ROKAN HULU	60,07	59,33	58,71	58,16	57,65	57,17	56,67	56,18	55,74	55,32	54,93
BENGKALIS	56,14	55,41	54,79	54,23	53,72	53,26	52,77	52,30	51,88	51,48	51,13
ROKAN HILIR	61,53	60,77	60,14	59,56	59,04	58,54	58,02	57,49	57,00	56,54	56,13
KEPULAUAN MERANTI	53,34	52,62	52,02	51,47	50,97	50,54	50,10	49,68	49,31	48,99	48,74
KOTA PEKANBARU	44,98	44,47	44,04	43,67	43,35	43,04	42,74	42,44	42,17	41,92	41,69
KOTA DUMAI	53,98	53,28	52,68	52,14	51,65	51,18	50,69	50,21	49,78	49,37	49,00
JUMLAH	54,09	53,45	52,89	52,40	51,96	51,56	51,13	50,72	50,35	50,00	49,69

Tabel I.4
 PERSENTASE PENDUDUK PERKOTAAN
 MENURUT KABUPATEN/KOTA
 TAHUN 2010 - 2020

RIAU

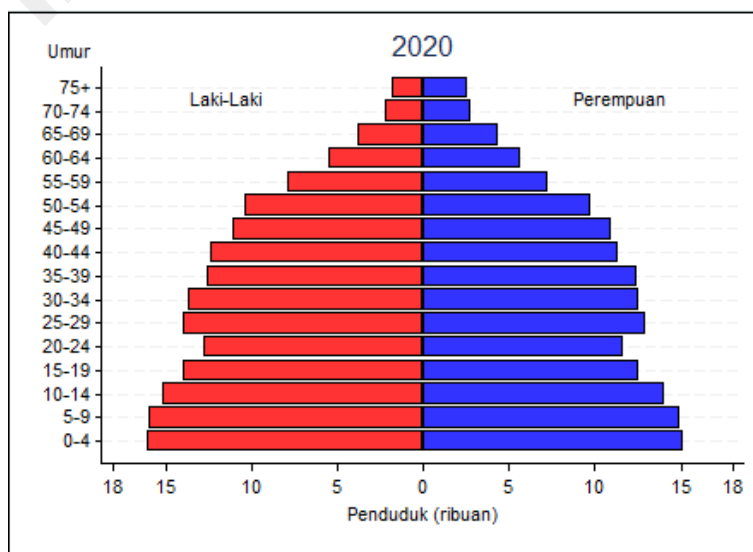
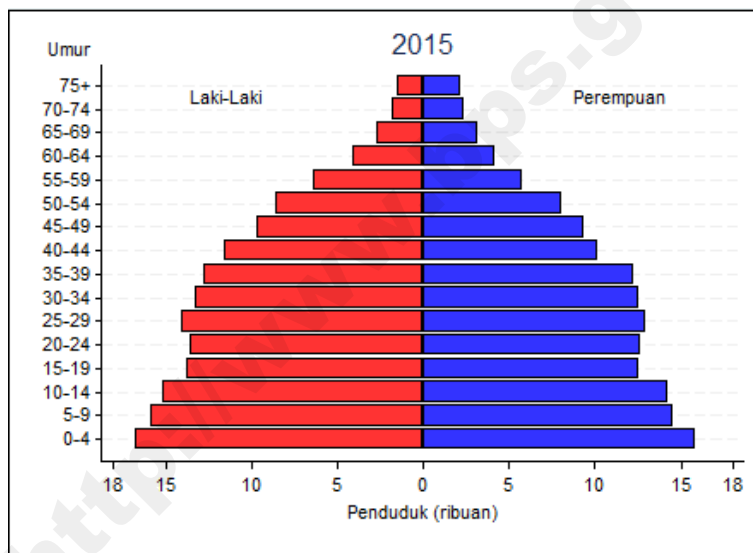
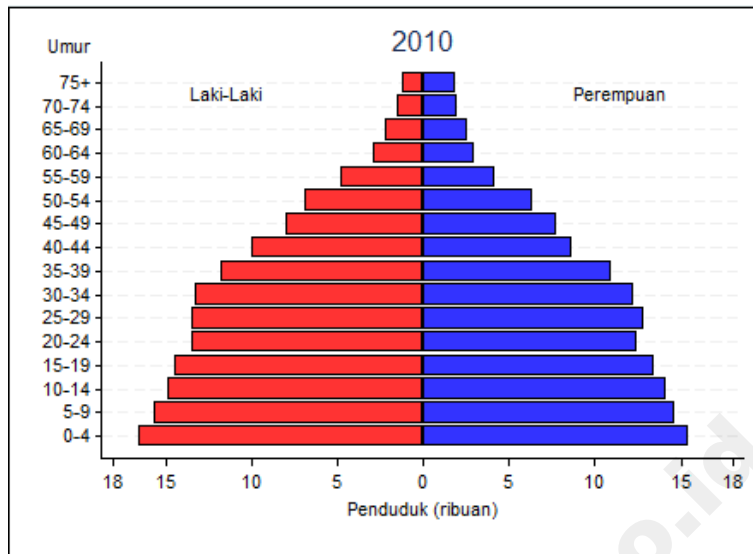
KABUPATEN/KOTA	2010	2011	2012	2013	2014	2015	2016	2017	2018	2019	2020
(1)	(2)	(3)	(4)	(5)	(6)	(7)	(8)	(9)	(10)	(11)	(12)
KUANTAN SINGINGI	14,13	14,23	14,32	14,40	14,50	14,59	14,69	14,79	14,89	14,99	15,09
INDRAGIRI HULU	23,63	23,72	23,81	23,91	23,99	24,08	24,18	24,28	24,38	24,48	24,58
INDRAGIRI HILIR	15,59	15,68	15,77	15,86	15,95	16,05	16,15	16,24	16,34	16,44	16,54
PELALAWAN	21,96	22,06	22,14	22,23	22,32	22,42	22,52	22,62	22,72	22,82	22,92
S I A K	42,74	42,83	42,93	43,01	43,11	43,19	43,30	43,40	43,50	43,59	43,69
KAMPAR	23,34	23,43	23,52	23,61	23,71	23,79	23,90	24,00	24,10	24,20	24,30
ROKAN HULU	13,77	13,86	13,95	14,04	14,13	14,22	14,32	14,42	14,52	14,62	14,72
BENGKALIS	50,06	50,15	50,24	50,33	50,42	50,51	50,61	50,71	50,81	50,91	51,01
ROKAN HILIR	22,20	22,29	22,38	22,47	22,56	22,65	22,75	22,85	22,95	23,05	23,15
KEPULAUAN MERANTI	32,72	32,81	32,90	32,99	33,08	33,17	33,27	33,37	33,47	33,57	33,67
KOTA PEKANBARU	98,25	98,34	98,43	98,52	98,61	98,70	98,80	98,90	99,00	99,10	99,20
KOTA DUMAI	68,51	68,60	68,69	68,78	68,87	68,96	69,06	69,16	69,26	69,36	69,46
JUMLAH	39,17	39,27	39,36	39,45	39,54	39,62	39,72	39,83	39,93	40,03	40,13

Tabel I.5
PERSENTASE PENDUDUK LANSIA
MENURUT KABUPATEN/KOTA
TAHUN 2010 - 2020

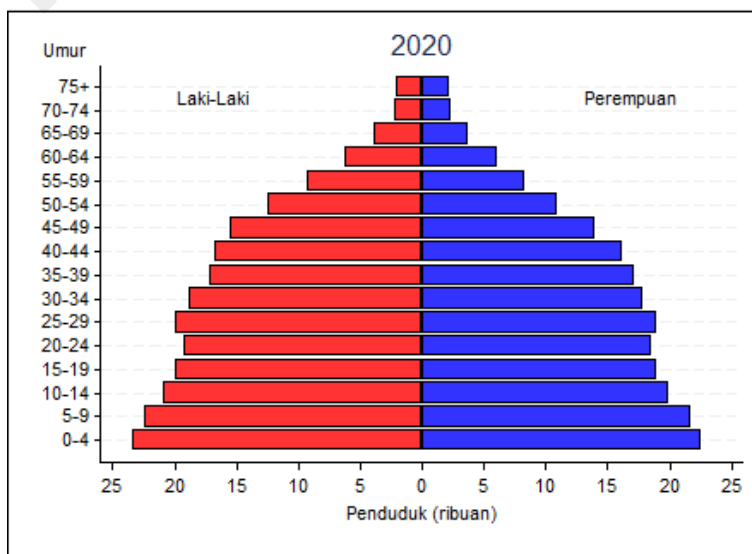
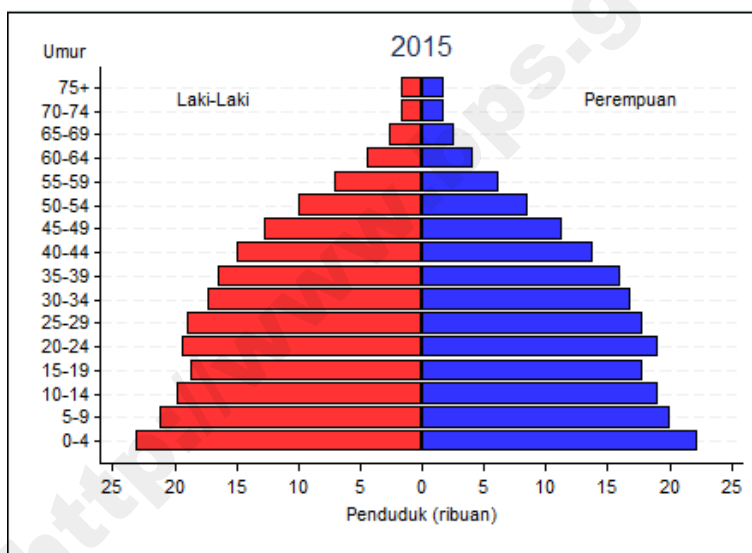
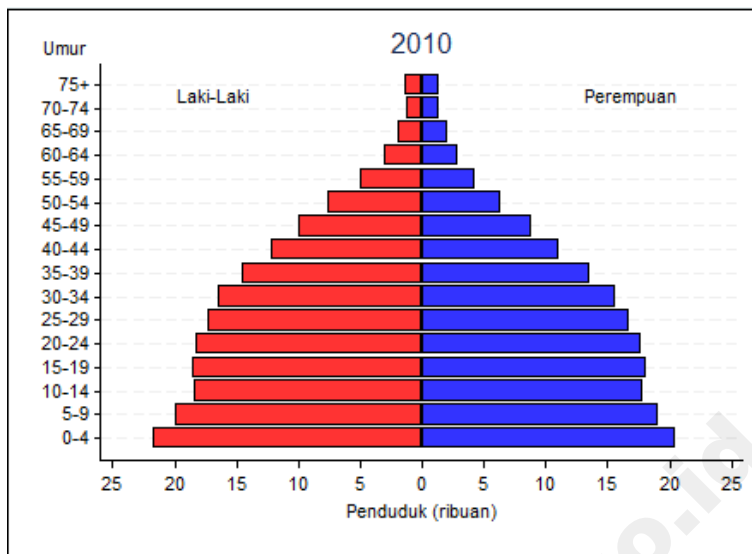
RIAU

KABUPATEN/KOTA	2010	2011	2012	2013	2014	2015	2016	2017	2018	2019	2020
(1)	(2)	(3)	(4)	(5)	(6)	(7)	(8)	(9)	(10)	(11)	(12)
KUANTAN SINGINGI	5,86	6,03	6,22	6,43	6,68	6,95	7,25	7,58	7,93	8,30	8,69
INDRAGIRI HULU	4,20	4,34	4,48	4,65	4,84	5,05	5,28	5,54	5,81	6,09	6,39
INDRAGIRI HILIR	5,19	5,35	5,54	5,75	5,98	6,25	6,53	6,84	7,17	7,52	7,88
PELALAWAN	2,61	2,70	2,79	2,91	3,04	3,18	3,34	3,51	3,69	3,88	4,08
S I A K	2,81	2,90	3,00	3,12	3,25	3,40	3,57	3,75	3,94	4,14	4,35
KAMPAR	3,83	3,95	4,08	4,23	4,41	4,60	4,81	5,04	5,29	5,55	5,82
ROKAN HULU	3,69	3,81	3,94	4,09	4,26	4,46	4,67	4,90	5,14	5,40	5,67
BENGKALIS	4,25	4,38	4,53	4,70	4,90	5,12	5,35	5,61	5,89	6,18	6,48
ROKAN HILIR	3,61	3,73	3,86	4,01	4,17	4,36	4,57	4,79	5,03	5,28	5,53
KEPULAUAN MERANTI	6,29	6,48	6,69	6,93	7,20	7,51	7,83	8,19	8,58	8,98	9,39
KOTA PEKANBARU	3,63	3,74	3,87	4,02	4,19	4,38	4,58	4,81	5,05	5,31	5,57
KOTA DUMAI	3,93	4,06	4,20	4,36	4,55	4,75	4,98	5,22	5,48	5,75	6,03
JUMLAH	4,04	4,16	4,29	4,44	4,62	4,82	5,03	5,26	5,51	5,78	6,05

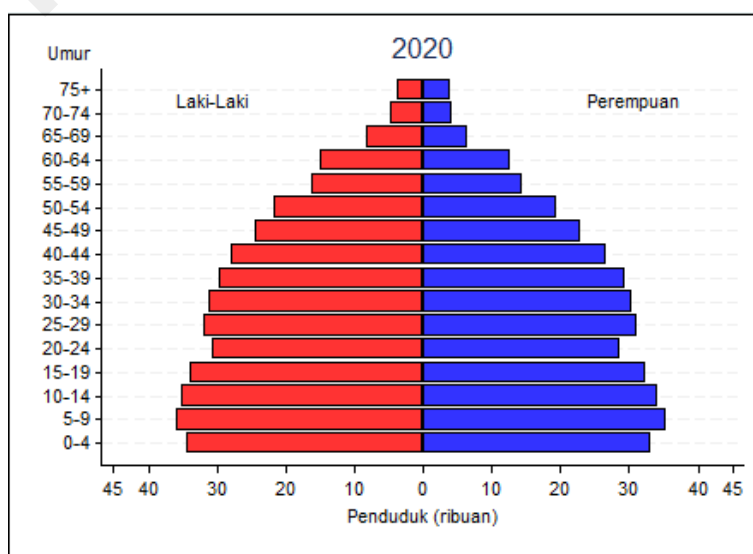
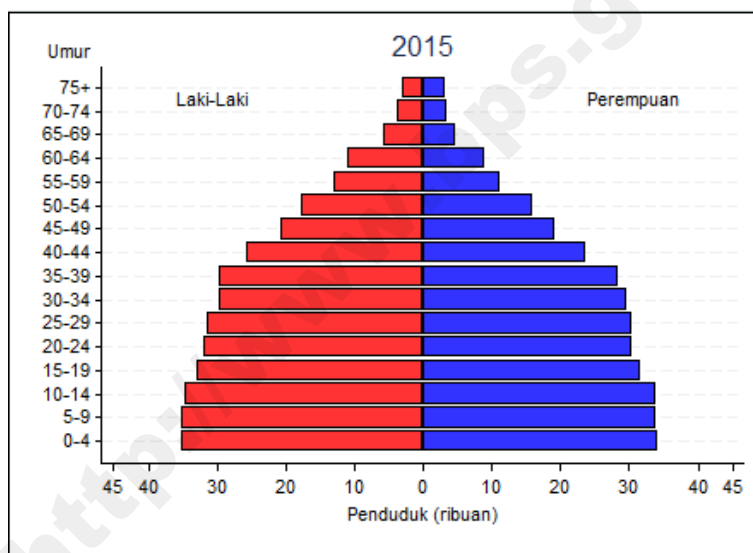
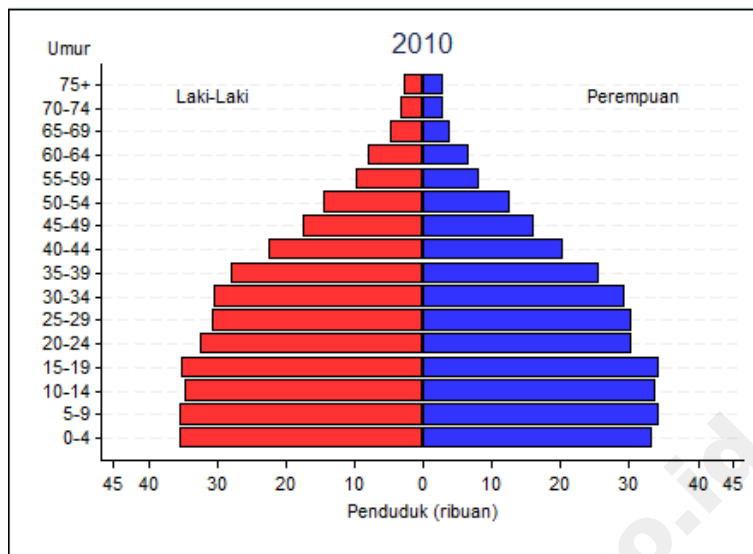
Gambar I.1
 PIRAMIDA PENDUDUK KUANTAN SINGINGI
 TAHUN 2010 – 2020



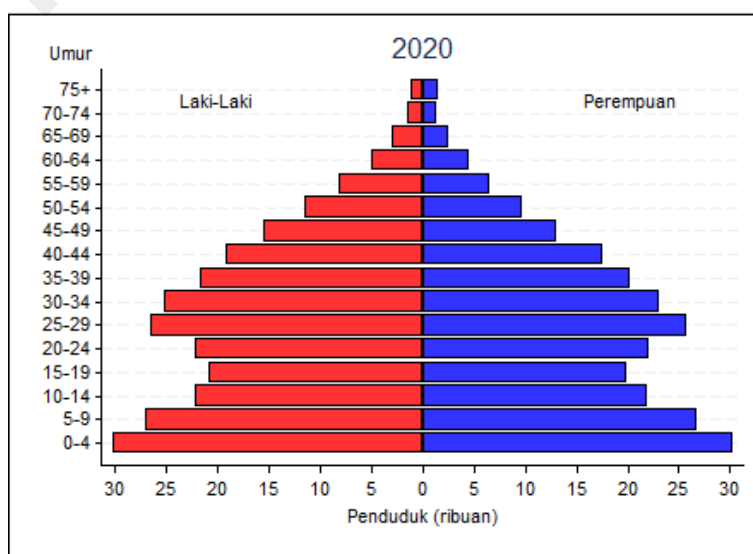
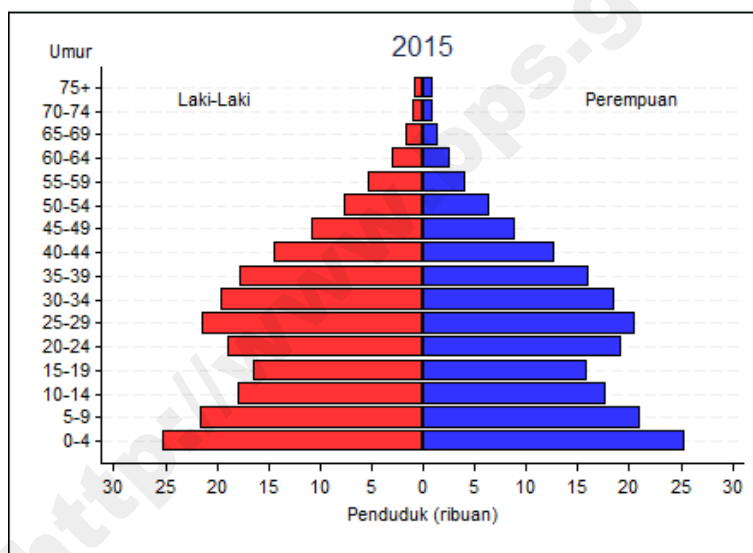
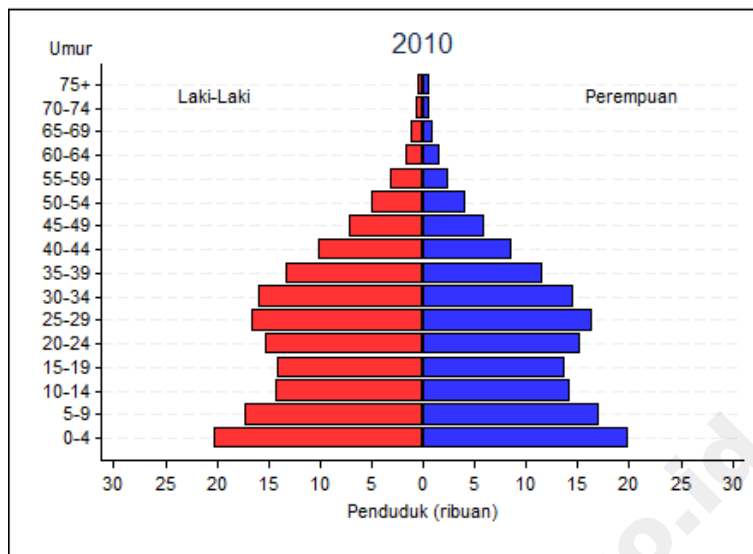
Gambar I.2
 PIRAMIDA PENDUDUK INDRAGIRI HULU
 TAHUN 2010 – 2020



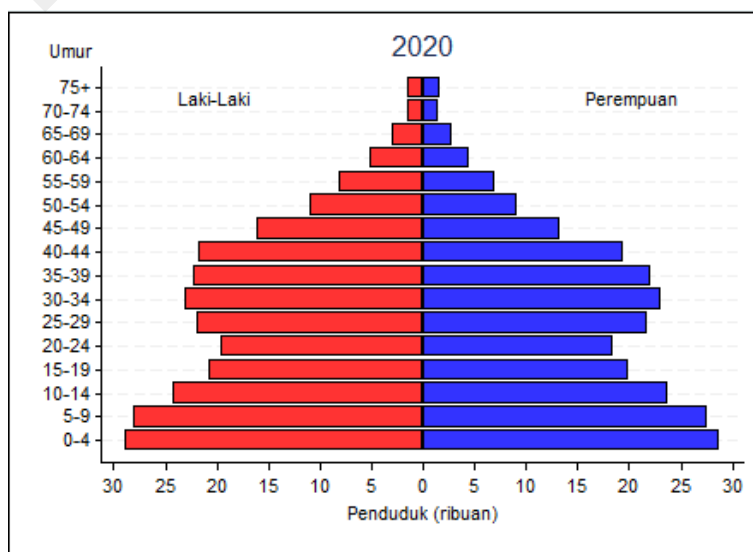
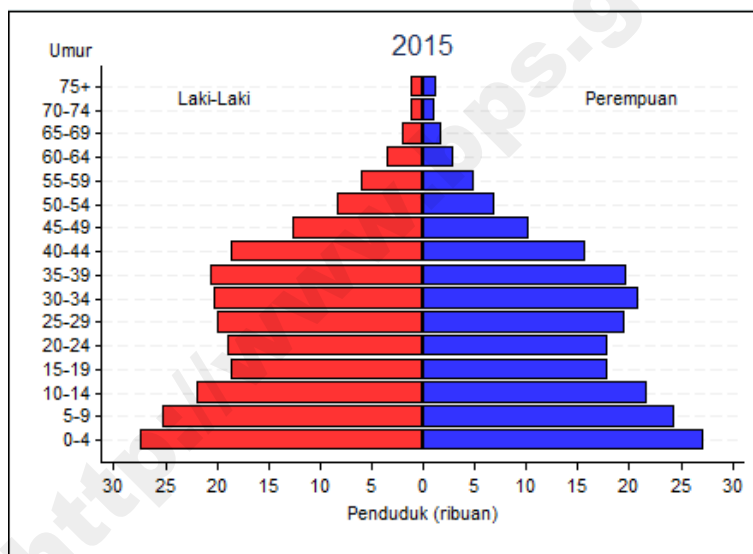
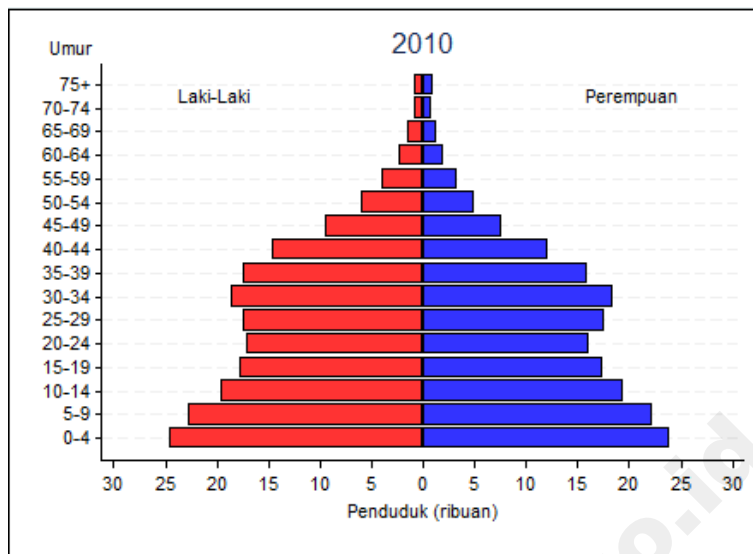
Gambar I.3
 PIRAMIDA PENDUDUK INDRAGIRI HILIR
 TAHUN 2010 – 2020



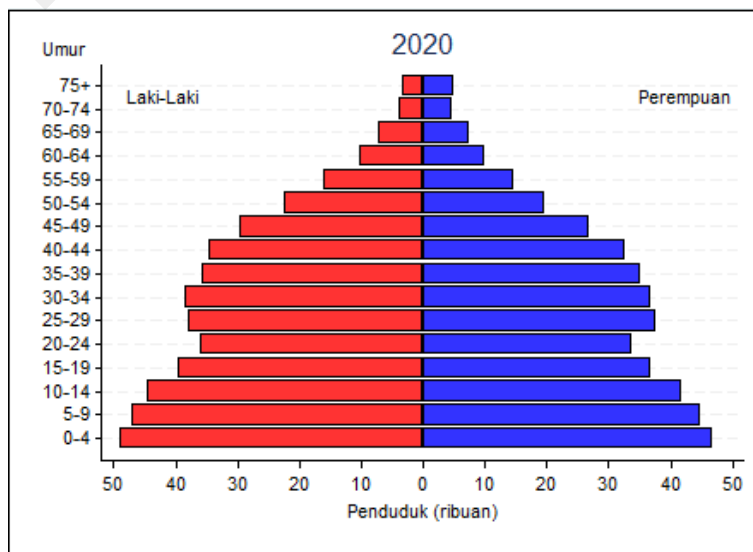
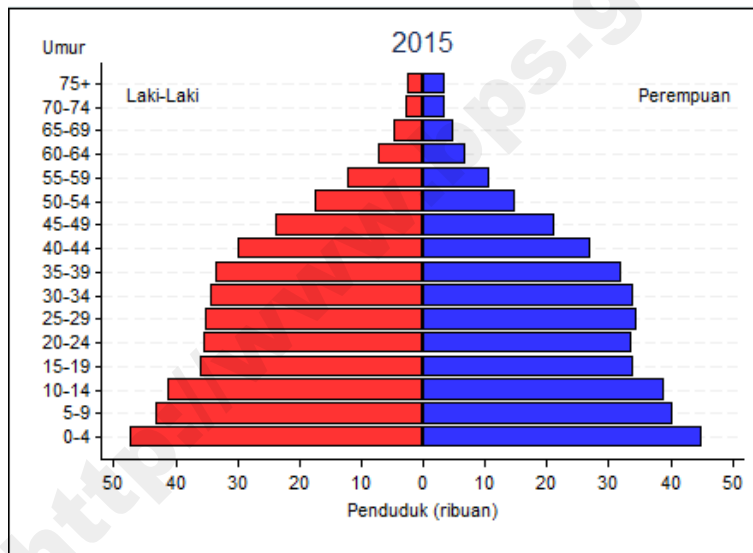
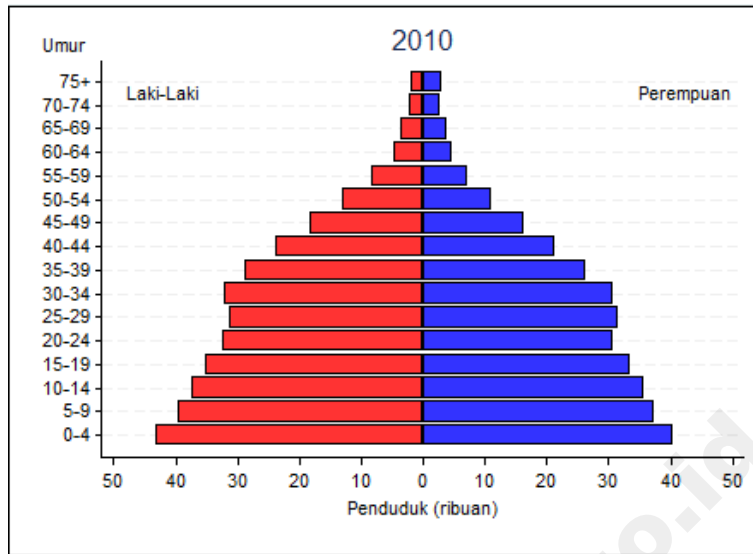
Gambar I.4
 PIRAMIDA PENDUDUK PELALAWAN
 TAHUN 2010 – 2020



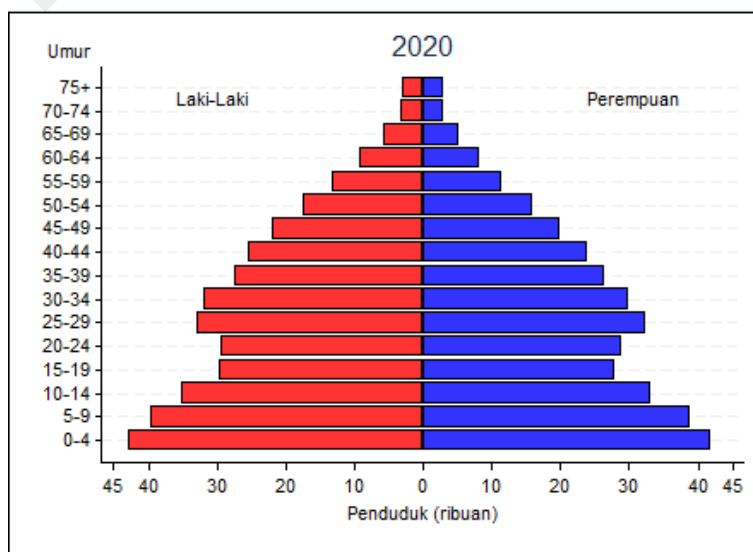
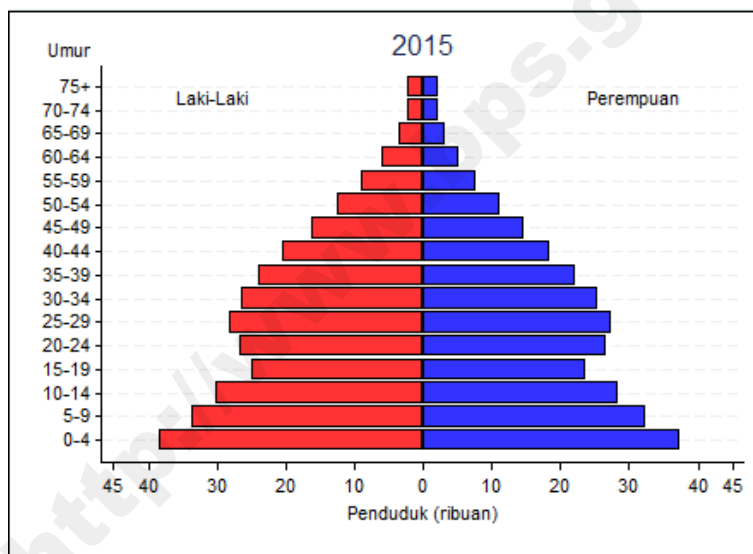
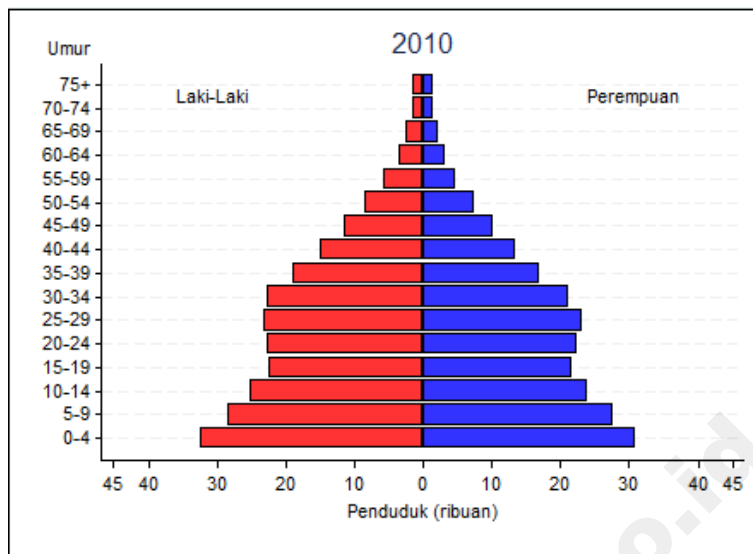
Gambar I.5
 PIRAMIDA PENDUDUK SIAK
 TAHUN 2010 – 2020



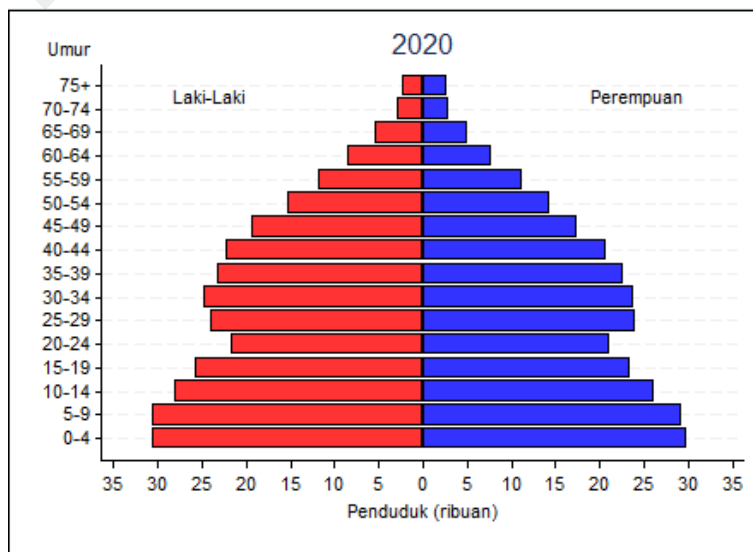
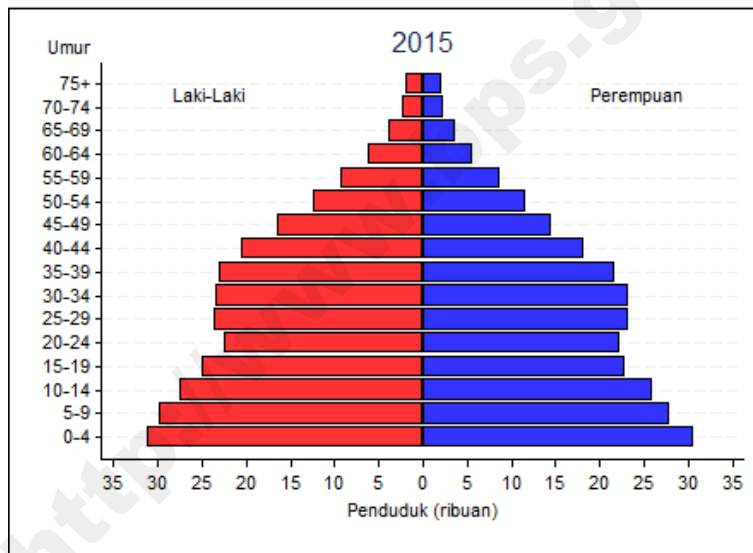
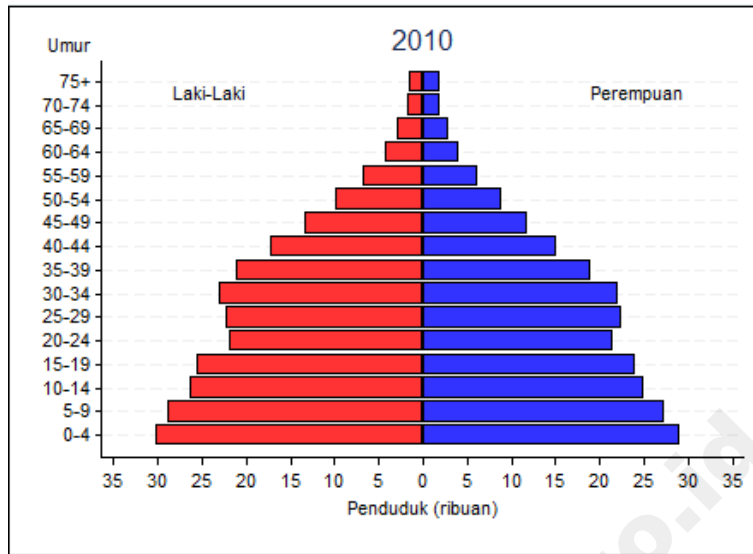
Gambar I.6
 PIRAMIDA PENDUDUK KAMPAR
 TAHUN 2010 – 2020



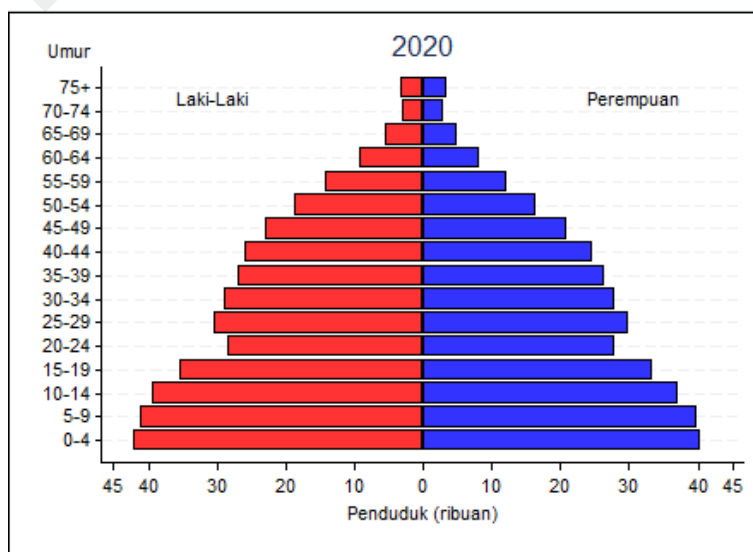
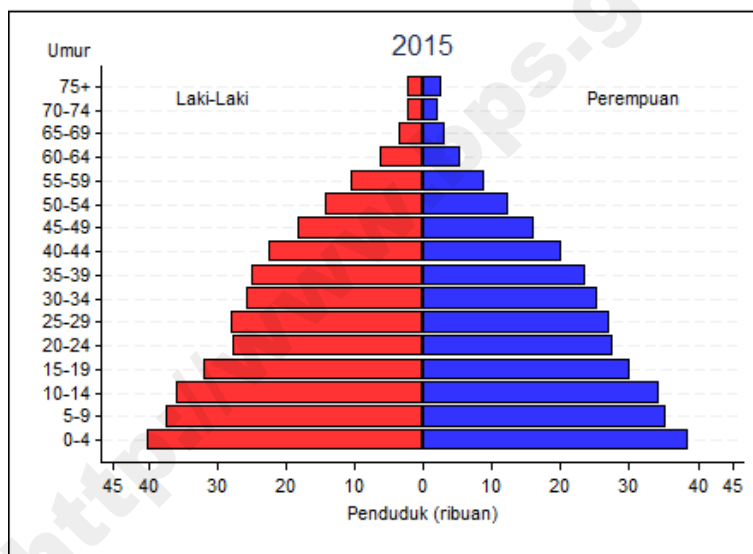
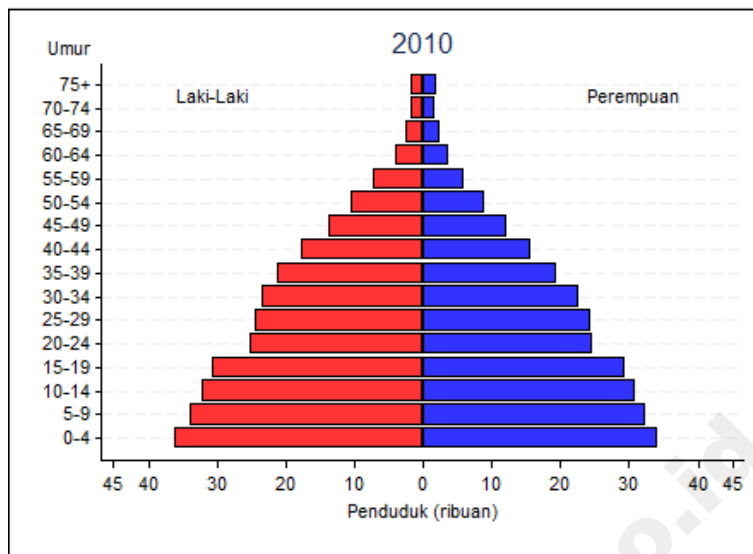
Gambar I.7
 PIRAMIDA PENDUDUK ROKAN HULU
 TAHUN 2010 – 2020



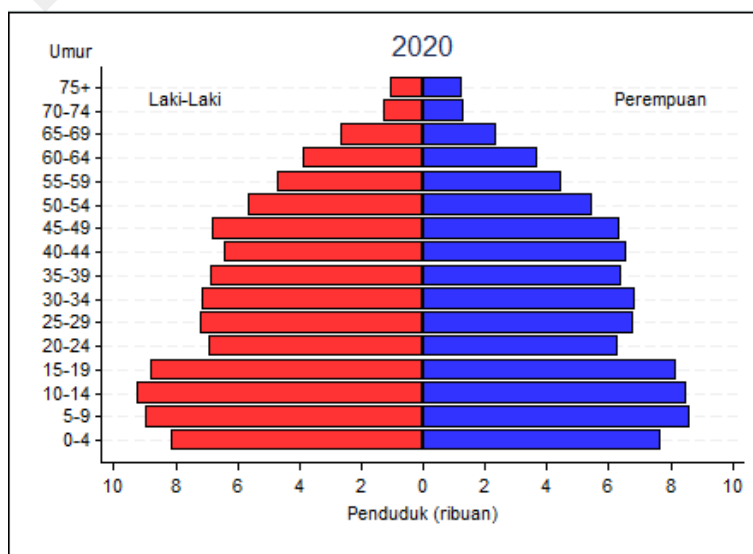
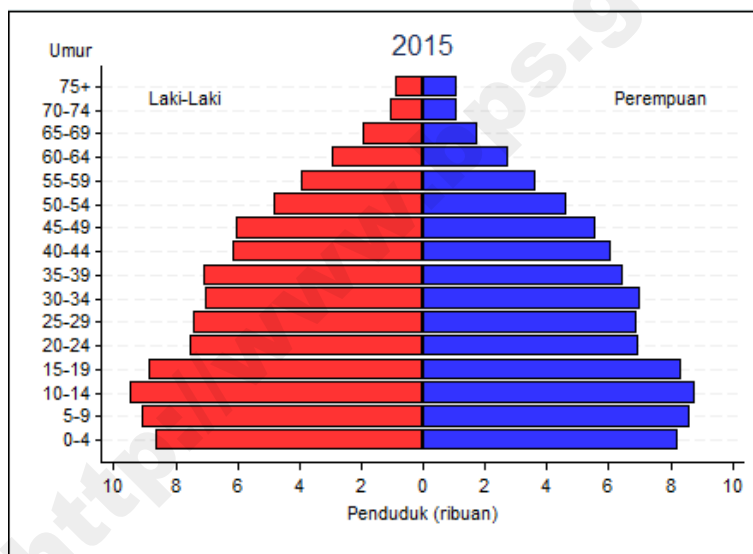
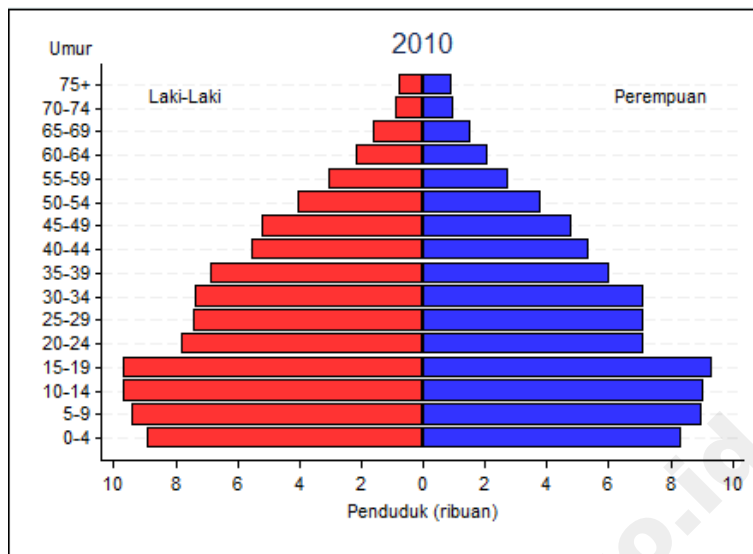
Gambar I.8
 PIRAMIDA PENDUDUK BENGKALIS
 TAHUN 2010 – 2020



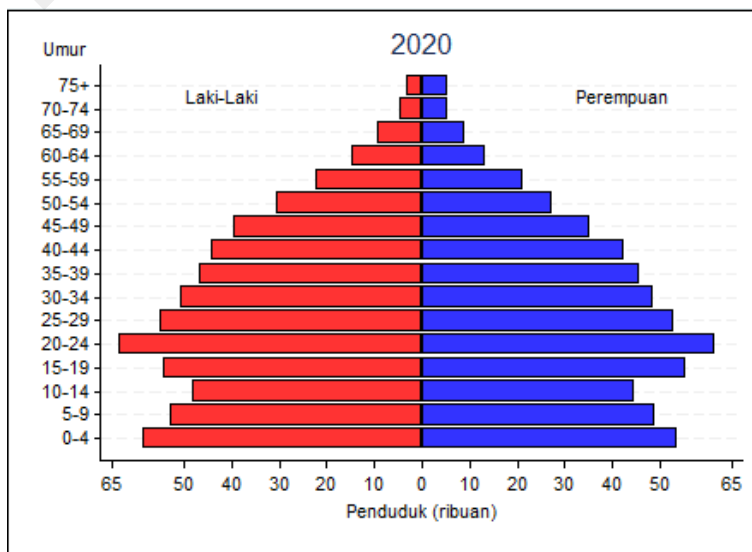
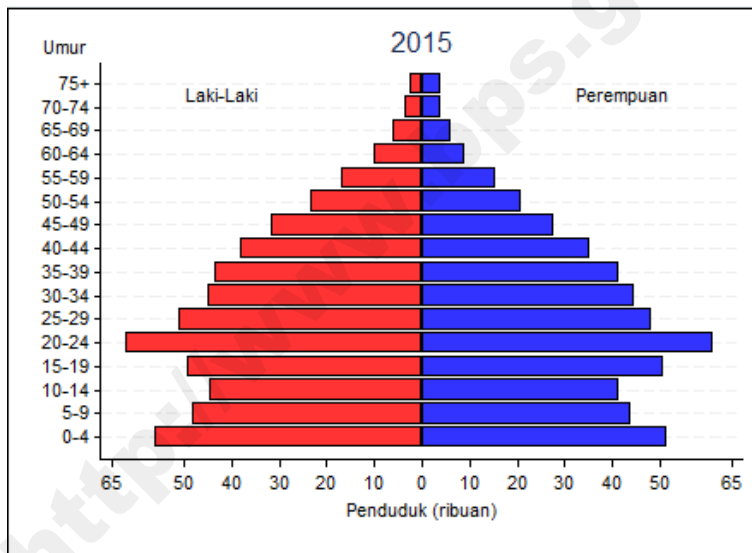
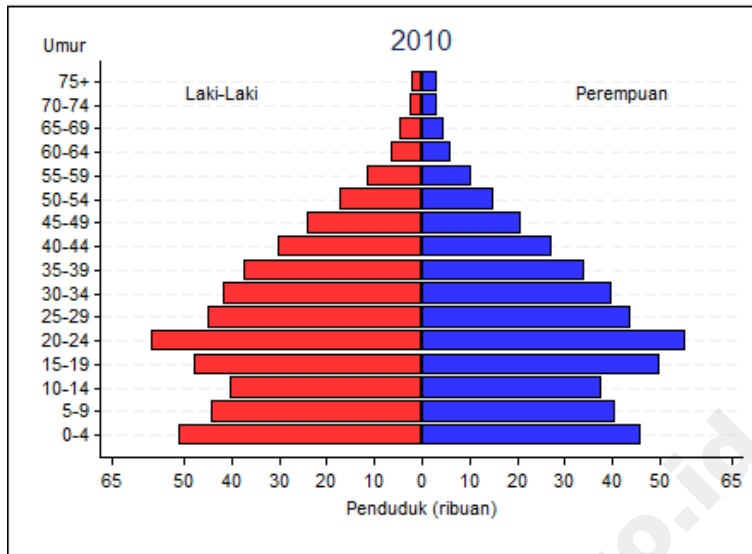
Gambar I.9
 PIRAMIDA PENDUDUK ROKAN HILIR
 TAHUN 2010 – 2020



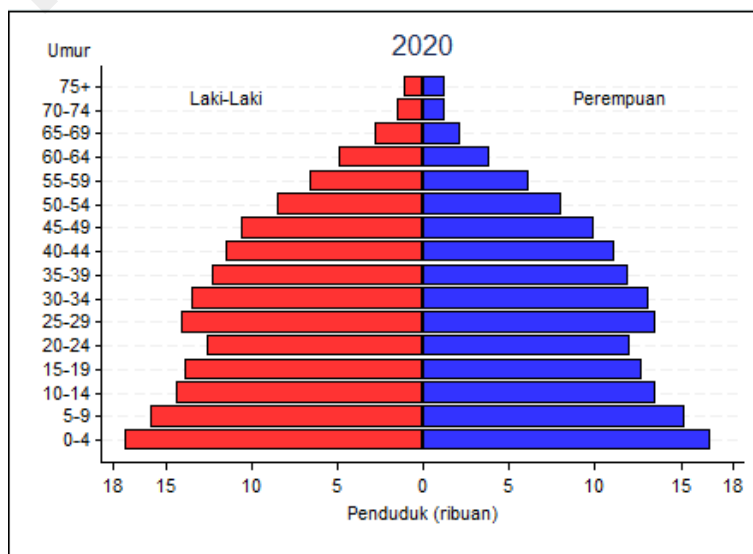
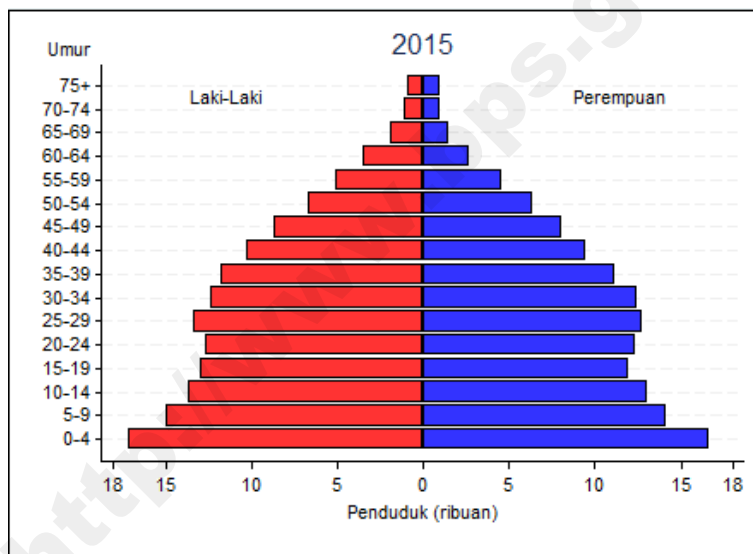
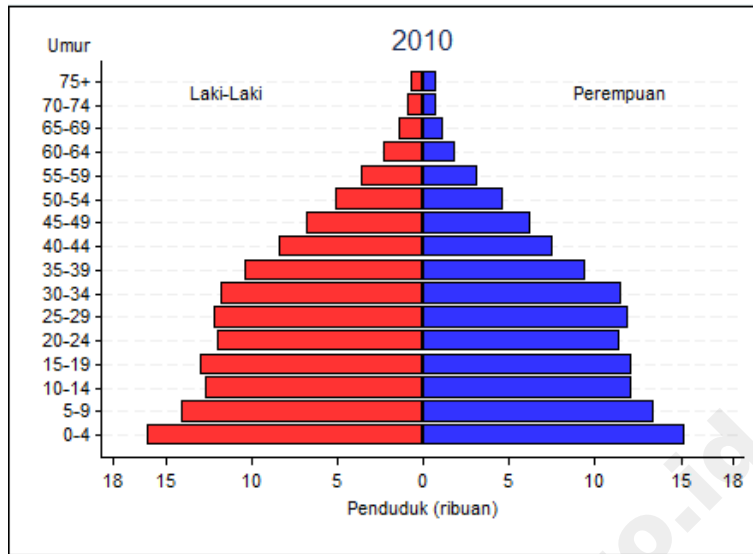
Gambar I.10
 PIRAMIDA PENDUDUK KEPUALAUAN MERANTI
 TAHUN 2010 – 2020



Gambar I.11
 PIRAMIDA PENDUDUK KOTA PEKANBARU
 TAHUN 2010 – 2020



Gambar I.12
 PIRAMIDA PENDUDUK KOTA DUMAI
 TAHUN 2010 – 2020



Tabel II.1.1
 PROYEKSI PENDUDUK
 MENURUT JENIS KELAMIN DAN KELOMPOK UMUR
 TAHUN 2010 - 2020

KUANTAN SINGINGI											LAKI-LAKI
KELOMPOK UMUR	2010	2011	2012	2013	2014	2015	2016	2017	2018	2019	2020
(1)	(2)	(3)	(4)	(5)	(6)	(7)	(8)	(9)	(10)	(11)	(12)
0-4	16.514	16.411	16.727	16.816	16.875	16.766	16.680	16.552	16.417	16.257	16.086
5-9	15.690	15.573	15.765	15.755	15.716	15.837	15.903	15.970	16.044	16.091	15.974
10-14	14.820	14.704	14.959	15.018	15.083	15.152	15.188	15.145	15.117	15.067	15.169
15-19	14.467	14.134	14.136	13.976	13.853	13.805	13.826	13.854	13.889	13.933	13.982
20-24	13.429	13.437	13.717	13.750	13.681	13.530	13.336	13.130	12.955	12.818	12.750
25-29	13.436	13.378	13.650	13.758	13.884	14.055	14.195	14.264	14.272	14.182	14.004
30-34	13.298	13.118	13.262	13.249	13.269	13.241	13.308	13.364	13.446	13.549	13.694
35-39	11.804	11.974	12.385	12.577	12.655	12.717	12.665	12.605	12.572	12.575	12.531
40-44	9.983	10.229	10.707	11.034	11.327	11.605	11.882	12.098	12.267	12.327	12.370
45-49	7.953	8.184	8.623	8.965	9.298	9.627	9.958	10.267	10.567	10.839	11.091
50-54	6.918	7.187	7.611	7.937	8.266	8.621	8.958	9.301	9.660	10.012	10.359
55-59	4.770	5.052	5.448	5.776	6.090	6.395	6.708	6.999	7.291	7.589	7.908
60-64	2.877	3.032	3.299	3.552	3.814	4.077	4.360	4.641	4.918	5.186	5.445
65-69	2.150	2.207	2.310	2.399	2.519	2.686	2.858	3.065	3.299	3.543	3.783
70-74	1.476	1.521	1.606	1.673	1.735	1.792	1.858	1.921	1.997	2.099	2.239
75+	1.231	1.254	1.318	1.362	1.415	1.471	1.530	1.593	1.661	1.727	1.789
JUMLAH	150.816	151.395	155.523	157.597	159.480	161.377	163.213	164.769	166.372	167.794	169.174

Tabel II.1.2
 PROYEKSI PENDUDUK
 MENURUT JENIS KELAMIN DAN KELOMPOK UMUR
 TAHUN 2010 - 2020

KUANTAN SINGINGI											PEREMPUAN
KELOMPOK UMUR	2010	2011	2012	2013	2014	2015	2016	2017	2018	2019	2020
(1)	(2)	(3)	(4)	(5)	(6)	(7)	(8)	(9)	(10)	(11)	(12)
0-4	15.409	15.362	15.710	15.850	15.972	15.874	15.767	15.640	15.487	15.313	15.124
5-9	14.641	14.473	14.630	14.557	14.485	14.570	14.680	14.795	14.910	15.004	14.906
10-14	14.126	13.928	14.158	14.201	14.254	14.272	14.253	14.194	14.107	14.009	14.081
15-19	13.409	13.110	13.070	12.845	12.662	12.527	12.472	12.487	12.506	12.528	12.531
20-24	12.425	12.399	12.680	12.731	12.725	12.613	12.444	12.219	11.983	11.781	11.635
25-29	12.805	12.687	12.842	12.837	12.867	12.932	13.027	13.119	13.150	13.111	12.979
30-34	12.266	12.226	12.477	12.524	12.561	12.547	12.553	12.511	12.486	12.487	12.535
35-39	10.962	11.160	11.613	11.891	12.121	12.276	12.350	12.413	12.438	12.448	12.421
40-44	8.665	8.882	9.312	9.617	9.914	10.188	10.475	10.740	10.983	11.174	11.307
45-49	7.766	7.995	8.422	8.750	9.083	9.404	9.736	10.062	10.378	10.675	10.966
50-54	6.364	6.666	7.097	7.423	7.753	8.083	8.402	8.726	9.055	9.384	9.709
55-59	4.203	4.439	4.818	5.156	5.489	5.789	6.119	6.425	6.714	6.999	7.292
60-64	3.020	3.164	3.393	3.605	3.850	4.131	4.410	4.718	5.044	5.360	5.650
65-69	2.630	2.682	2.810	2.918	3.044	3.183	3.368	3.565	3.786	4.036	4.332
70-74	1.957	2.011	2.109	2.183	2.260	2.339	2.412	2.494	2.590	2.703	2.829
75+	1.850	1.889	1.967	2.033	2.099	2.171	2.254	2.339	2.424	2.510	2.607
JUMLAH	142.498	143.073	147.108	149.121	151.139	152.899	154.722	156.447	158.041	159.522	160.904

Tabel II.1.3
 PROYEKSI PENDUDUK
 MENURUT JENIS KELAMIN DAN KELOMPOK UMUR
 TAHUN 2010 - 2020

KUANTAN SINGINGI											LAKI-LAKI + PEREMPUAN
KELOMPOK UMUR	2010	2011	2012	2013	2014	2015	2016	2017	2018	2019	2020
(1)	(2)	(3)	(4)	(5)	(6)	(7)	(8)	(9)	(10)	(11)	(12)
0-4	31.923	31.773	32.437	32.666	32.847	32.640	32.447	32.192	31.904	31.570	31.210
5-9	30.331	30.046	30.395	30.312	30.201	30.407	30.583	30.765	30.954	31.095	30.880
10-14	28.946	28.632	29.117	29.219	29.337	29.424	29.441	29.339	29.224	29.076	29.250
15-19	27.876	27.244	27.206	26.821	26.515	26.332	26.298	26.341	26.395	26.461	26.513
20-24	25.854	25.836	26.397	26.481	26.406	26.143	25.780	25.349	24.938	24.599	24.385
25-29	26.241	26.065	26.492	26.595	26.751	26.987	27.222	27.383	27.422	27.293	26.983
30-34	25.564	25.344	25.739	25.773	25.830	25.788	25.861	25.875	25.932	26.036	26.229
35-39	22.766	23.134	23.998	24.468	24.776	24.993	25.015	25.018	25.010	25.023	24.952
40-44	18.648	19.111	20.019	20.651	21.241	21.793	22.357	22.838	23.250	23.501	23.677
45-49	15.719	16.179	17.045	17.715	18.381	19.031	19.694	20.329	20.945	21.514	22.057
50-54	13.282	13.853	14.708	15.360	16.019	16.704	17.360	18.027	18.715	19.396	20.068
55-59	8.973	9.491	10.266	10.932	11.579	12.184	12.827	13.424	14.005	14.588	15.200
60-64	5.897	6.196	6.692	7.157	7.664	8.208	8.770	9.359	9.962	10.546	11.095
65-69	4.780	4.889	5.120	5.317	5.563	5.869	6.226	6.630	7.085	7.579	8.115
70-74	3.433	3.532	3.715	3.856	3.995	4.131	4.270	4.415	4.587	4.802	5.068
75+	3.081	3.143	3.285	3.395	3.514	3.642	3.784	3.932	4.085	4.237	4.396
JUMLAH	293.314	294.468	302.631	306.718	310.619	314.276	317.935	321.216	324.413	327.316	330.078

Tabel II.2.1
 PROYEKSI PENDUDUK
 MENURUT JENIS KELAMIN DAN KELOMPOK UMUR
 TAHUN 2010 - 2020

INDRAGIRI HULU

LAKI-LAKI

KELOMPOK UMUR	2010	2011	2012	2013	2014	2015	2016	2017	2018	2019	2020
(1)	(2)	(3)	(4)	(5)	(6)	(7)	(8)	(9)	(10)	(11)	(12)
0-4	21.686	21.875	22.415	22.741	23.064	23.149	23.254	23.327	23.368	23.388	23.383
5-9	19.942	20.090	20.443	20.619	20.789	21.163	21.458	21.784	22.101	22.406	22.474
10-14	18.475	18.605	19.027	19.278	19.568	19.861	20.101	20.262	20.427	20.578	20.933
15-19	18.616	18.460	18.559	18.518	18.552	18.678	18.888	19.131	19.372	19.644	19.917
20-24	18.261	18.549	19.035	19.255	19.364	19.347	19.255	19.163	19.097	19.099	19.194
25-29	17.301	17.485	17.934	18.243	18.608	19.029	19.404	19.712	19.921	20.008	19.963
30-34	16.543	16.564	16.835	16.971	17.180	17.320	17.576	17.841	18.129	18.464	18.857
35-39	14.574	15.005	15.600	15.989	16.261	16.509	16.601	16.701	16.824	17.010	17.126
40-44	12.236	12.726	13.390	13.927	14.449	14.955	15.461	15.912	16.297	16.554	16.783
45-49	10.043	10.491	11.111	11.658	12.222	12.783	13.353	13.917	14.466	14.997	15.506
50-54	7.559	7.974	8.487	8.933	9.403	9.906	10.395	10.909	11.444	11.988	12.532
55-59	5.025	5.400	5.856	6.264	6.676	7.082	7.501	7.911	8.325	8.758	9.221
60-64	3.006	3.216	3.517	3.823	4.149	4.480	4.838	5.203	5.571	5.937	6.300
65-69	1.978	2.060	2.169	2.273	2.412	2.599	2.792	3.026	3.289	3.570	3.852
70-74	1.320	1.380	1.465	1.540	1.615	1.686	1.765	1.844	1.936	2.056	2.217
75+	1.331	1.381	1.452	1.523	1.595	1.672	1.760	1.853	1.951	2.048	2.146
JUMLAH	187.896	191.261	197.295	201.555	205.907	210.219	214.402	218.496	222.518	226.505	230.404

Tabel II.2.2
 PROYEKSI PENDUDUK
 MENURUT JENIS KELAMIN DAN KELOMPOK UMUR
 TAHUN 2010 - 2020

INDRAGIRI HULU											PEREMPUAN
KELOMPOK UMUR	2010	2011	2012	2013	2014	2015	2016	2017	2018	2019	2020
(1)	(2)	(3)	(4)	(5)	(6)	(7)	(8)	(9)	(10)	(11)	(12)
0-4	20.491	20.762	21.337	21.766	22.165	22.295	22.393	22.457	22.497	22.498	22.484
5-9	19.094	19.183	19.490	19.612	19.716	20.073	20.446	20.832	21.241	21.617	21.730
10-14	17.849	17.888	18.272	18.535	18.800	19.050	19.235	19.369	19.473	19.561	19.894
15-19	18.141	18.024	18.063	17.953	17.884	17.911	18.030	18.254	18.496	18.739	18.967
20-24	17.751	18.001	18.501	18.785	18.968	19.025	18.976	18.843	18.699	18.593	18.586
25-29	16.745	16.860	17.155	17.341	17.561	17.867	18.198	18.532	18.790	18.948	18.978
30-34	15.563	15.763	16.166	16.409	16.628	16.809	17.004	17.141	17.305	17.506	17.785
35-39	13.557	14.030	14.672	15.190	15.644	16.034	16.310	16.574	16.800	17.005	17.169
40-44	11.128	11.593	12.215	12.755	13.285	13.818	14.361	14.888	15.395	15.835	16.214
45-49	8.851	9.261	9.807	10.300	10.804	11.323	11.850	12.386	12.925	13.453	13.984
50-54	6.362	6.774	7.252	7.671	8.097	8.545	8.977	9.432	9.899	10.377	10.865
55-59	4.263	4.577	4.993	5.405	5.814	6.207	6.635	7.045	7.447	7.854	8.279
60-64	2.877	3.061	3.299	3.539	3.820	4.149	4.476	4.846	5.243	5.636	6.011
65-69	2.006	2.078	2.187	2.296	2.419	2.555	2.731	2.920	3.133	3.378	3.671
70-74	1.422	1.484	1.563	1.635	1.709	1.790	1.865	1.950	2.048	2.160	2.284
75+	1.425	1.474	1.547	1.607	1.680	1.761	1.844	1.932	2.025	2.124	2.226
JUMLAH	177.525	180.813	186.519	190.799	194.994	199.212	203.331	207.401	211.416	215.284	219.127

Tabel II.2.3
 PROYEKSI PENDUDUK
 MENURUT JENIS KELAMIN DAN KELOMPOK UMUR
 TAHUN 2010 - 2020

INDRAGIRI HULU

LAKI-LAKI + PEREMPUAN

KELOMPOK UMUR	2010	2011	2012	2013	2014	2015	2016	2017	2018	2019	2020
(1)	(2)	(3)	(4)	(5)	(6)	(7)	(8)	(9)	(10)	(11)	(12)
0-4	42.177	42.637	43.752	44.507	45.229	45.444	45.647	45.784	45.865	45.886	45.867
5-9	39.036	39.273	39.933	40.231	40.505	41.236	41.904	42.616	43.342	44.023	44.204
10-14	36.324	36.493	37.299	37.813	38.368	38.911	39.336	39.631	39.900	40.139	40.827
15-19	36.757	36.484	36.622	36.471	36.436	36.589	36.918	37.385	37.868	38.383	38.884
20-24	36.012	36.550	37.536	38.040	38.332	38.372	38.231	38.006	37.796	37.692	37.780
25-29	34.046	34.345	35.089	35.584	36.169	36.896	37.602	38.244	38.711	38.956	38.941
30-34	32.106	32.327	33.001	33.380	33.808	34.129	34.580	34.982	35.434	35.970	36.642
35-39	28.131	29.035	30.272	31.179	31.905	32.543	32.911	33.275	33.624	34.015	34.295
40-44	23.364	24.319	25.605	26.682	27.734	28.773	29.822	30.800	31.692	32.389	32.997
45-49	18.894	19.752	20.918	21.958	23.026	24.106	25.203	26.303	27.391	28.450	29.490
50-54	13.921	14.748	15.739	16.604	17.500	18.451	19.372	20.341	21.343	22.365	23.397
55-59	9.288	9.977	10.849	11.669	12.490	13.289	14.136	14.956	15.772	16.612	17.500
60-64	5.883	6.277	6.816	7.362	7.969	8.629	9.314	10.049	10.814	11.573	12.311
65-69	3.984	4.138	4.356	4.569	4.831	5.154	5.523	5.946	6.422	6.948	7.523
70-74	2.742	2.864	3.028	3.175	3.324	3.476	3.630	3.794	3.984	4.216	4.501
75+	2.756	2.855	2.999	3.130	3.275	3.433	3.604	3.785	3.976	4.172	4.372
JUMLAH	365.421	372.074	383.814	392.354	400.901	409.431	417.733	425.897	433.934	441.789	449.531

Tabel II.3.1
 PROYEKSI PENDUDUK
 MENURUT JENIS KELAMIN DAN KELOMPOK UMUR
 TAHUN 2010 - 2020

INDRAGIRI HILIR

LAKI-LAKI

KELOMPOK UMUR	2010	2011	2012	2013	2014	2015	2016	2017	2018	2019	2020
(1)	(2)	(3)	(4)	(5)	(6)	(7)	(8)	(9)	(10)	(11)	(12)
0-4	35.407	35.342	35.085	35.272	35.445	35.251	35.136	34.975	34.794	34.582	34.350
5-9	35.446	35.336	34.839	34.819	34.779	35.084	35.298	35.558	35.823	36.068	35.945
10-14	34.570	34.448	34.133	34.269	34.464	34.659	34.808	34.817	34.857	34.872	35.240
15-19	35.160	34.500	33.606	33.227	32.981	32.901	33.014	33.182	33.366	33.600	33.846
20-24	32.399	32.563	32.378	32.454	32.337	32.012	31.614	31.223	30.897	30.689	30.640
25-29	30.713	30.716	30.525	30.768	31.092	31.509	31.879	32.137	32.251	32.168	31.886
30-34	30.332	30.053	29.594	29.563	29.649	29.617	29.824	30.041	30.314	30.663	31.109
35-39	27.992	28.519	28.729	29.176	29.401	29.574	29.507	29.461	29.469	29.588	29.596
40-44	22.537	23.194	23.645	24.369	25.052	25.689	26.352	26.917	27.372	27.613	27.814
45-49	17.510	18.101	18.573	19.310	20.056	20.787	21.545	22.283	23.002	23.681	24.324
50-54	14.512	15.146	15.619	16.289	16.990	17.736	18.465	19.231	20.033	20.842	21.642
55-59	9.852	10.478	11.006	11.669	12.321	12.950	13.610	14.244	14.884	15.552	16.265
60-64	7.881	8.343	8.840	9.521	10.240	10.955	11.741	12.530	13.321	14.098	14.860
65-69	4.699	4.844	4.938	5.129	5.394	5.756	6.137	6.602	7.127	7.680	8.236
70-74	3.134	3.244	3.336	3.474	3.608	3.733	3.880	4.021	4.191	4.423	4.737
75+	2.648	2.716	2.773	2.874	2.982	3.102	3.233	3.381	3.535	3.686	3.837
JUMLAH	344.792	347.543	347.619	352.183	356.791	361.315	366.043	370.603	375.236	379.805	384.327

Tabel II.3.2
 PROYEKSI PENDUDUK
 MENURUT JENIS KELAMIN DAN KELOMPOK UMUR
 TAHUN 2010 - 2020

INDRAGIRI HILIR											PEREMPUAN
KELOMPOK UMUR	2010	2011	2012	2013	2014	2015	2016	2017	2018	2019	2020
(1)	(2)	(3)	(4)	(5)	(6)	(7)	(8)	(9)	(10)	(11)	(12)
0-4	33.439	33.519	33.425	33.778	34.086	33.991	33.864	33.711	33.522	33.322	33.108
5-9	34.420	34.214	33.726	33.619	33.498	33.808	34.159	34.549	34.967	35.365	35.342
10-14	33.945	33.658	33.360	33.518	33.693	33.848	33.901	33.886	33.822	33.766	34.147
15-19	34.286	33.703	32.773	32.266	31.852	31.626	31.582	31.737	31.922	32.148	32.350
20-24	30.318	30.419	30.335	30.511	30.534	30.365	30.043	29.610	29.167	28.820	28.644
25-29	30.397	30.281	29.897	29.937	30.051	30.307	30.625	30.954	31.155	31.223	31.092
30-34	29.399	29.454	29.306	29.460	29.587	29.649	29.752	29.773	29.842	30.006	30.315
35-39	25.662	26.273	26.660	27.344	27.911	28.364	28.624	28.871	29.054	29.228	29.339
40-44	20.343	20.965	21.438	22.173	22.889	23.602	24.335	25.037	25.704	26.280	26.750
45-49	16.128	16.694	17.153	17.846	18.554	19.275	20.009	20.758	21.501	22.239	22.980
50-54	12.676	13.352	13.866	14.531	15.197	15.899	16.572	17.279	18.003	18.756	19.528
55-59	8.276	8.789	9.306	9.978	10.638	11.260	11.939	12.585	13.206	13.840	14.510
60-64	6.736	7.091	7.409	7.869	8.408	9.060	9.691	10.420	11.198	11.974	12.704
65-69	3.971	4.068	4.157	4.324	4.509	4.715	4.996	5.294	5.629	6.030	6.515
70-74	2.851	2.942	3.008	3.116	3.228	3.350	3.458	3.594	3.750	3.924	4.118
75+	2.860	2.933	2.981	3.077	3.188	3.300	3.441	3.573	3.718	3.872	4.044
JUMLAH	325.707	328.355	328.800	333.347	337.823	342.419	346.991	351.631	356.160	360.793	365.486

Tabel II.3.3
 PROYEKSI PENDUDUK
 MENURUT JENIS KELAMIN DAN KELOMPOK UMUR
 TAHUN 2010 - 2020

INDRAGIRI HILIR											LAKI-LAKI + PEREMPUAN
KELOMPOK UMUR	2010	2011	2012	2013	2014	2015	2016	2017	2018	2019	2020
(1)	(2)	(3)	(4)	(5)	(6)	(7)	(8)	(9)	(10)	(11)	(12)
0-4	68.846	68.861	68.510	69.050	69.531	69.242	69.000	68.686	68.316	67.904	67.458
5-9	69.866	69.550	68.565	68.438	68.277	68.892	69.457	70.107	70.790	71.433	71.287
10-14	68.515	68.106	67.493	67.787	68.157	68.507	68.709	68.703	68.679	68.638	69.387
15-19	69.446	68.203	66.379	65.493	64.833	64.527	64.596	64.919	65.288	65.748	66.196
20-24	62.717	62.982	62.713	62.965	62.871	62.377	61.657	60.833	60.064	59.509	59.284
25-29	61.110	60.997	60.422	60.705	61.143	61.816	62.504	63.091	63.406	63.391	62.978
30-34	59.731	59.507	58.900	59.023	59.236	59.266	59.576	59.814	60.156	60.669	61.424
35-39	53.654	54.792	55.389	56.520	57.312	57.938	58.131	58.332	58.523	58.816	58.935
40-44	42.880	44.159	45.083	46.542	47.941	49.291	50.687	51.954	53.076	53.893	54.564
45-49	33.638	34.795	35.726	37.156	38.610	40.062	41.554	43.041	44.503	45.920	47.304
50-54	27.188	28.498	29.485	30.820	32.187	33.635	35.037	36.510	38.036	39.598	41.170
55-59	18.128	19.267	20.312	21.647	22.959	24.210	25.549	26.829	28.090	29.392	30.775
60-64	14.617	15.434	16.249	17.390	18.648	20.015	21.432	22.950	24.519	26.072	27.564
65-69	8.670	8.912	9.095	9.453	9.903	10.471	11.133	11.896	12.756	13.710	14.751
70-74	5.985	6.186	6.344	6.590	6.836	7.083	7.338	7.615	7.941	8.347	8.855
75+	5.508	5.649	5.754	5.951	6.170	6.402	6.674	6.954	7.253	7.558	7.881
JUMLAH	670.499	675.898	676.419	685.530	694.614	703.734	713.034	722.234	731.396	740.598	749.813

Tabel II.4.1
 PROYEKSI PENDUDUK
 MENURUT JENIS KELAMIN DAN KELOMPOK UMUR
 TAHUN 2010 - 2020

PELALAWAN											LAKI-LAKI
KELOMPOK UMUR	2010	2011	2012	2013	2014	2015	2016	2017	2018	2019	2020
(1)	(2)	(3)	(4)	(5)	(6)	(7)	(8)	(9)	(10)	(11)	(12)
0-4	20.241	21.718	22.280	23.353	24.437	25.313	26.268	27.233	28.175	29.123	30.084
5-9	17.348	18.590	18.940	19.735	20.527	21.568	22.591	23.703	24.835	26.003	26.949
10-14	14.224	15.235	15.599	16.328	17.100	17.912	18.729	19.510	20.315	21.135	22.213
15-19	14.056	14.824	14.922	15.382	15.898	16.519	17.258	18.066	18.893	19.786	20.727
20-24	15.254	16.477	16.931	17.694	18.357	18.929	19.462	20.020	20.604	21.281	22.098
25-29	16.648	17.896	18.378	19.312	20.323	21.450	22.595	23.725	24.762	25.684	26.477
30-34	15.997	17.037	17.337	18.055	18.856	19.618	20.568	21.577	22.646	23.821	25.134
35-39	13.358	14.628	15.226	16.123	16.917	17.726	18.413	19.147	19.919	20.799	21.636
40-44	10.149	11.226	11.826	12.708	13.603	14.529	15.518	16.508	17.459	18.315	19.187
45-49	7.232	8.036	8.519	9.236	9.989	10.782	11.635	12.534	13.455	14.405	15.389
50-54	4.999	5.608	5.977	6.498	7.058	7.674	8.318	9.024	9.775	10.576	11.422
55-59	3.182	3.638	3.949	4.364	4.799	5.254	5.749	6.266	6.809	7.399	8.048
60-64	1.720	1.956	2.142	2.407	2.695	3.002	3.351	3.723	4.117	4.532	4.969
65-69	1.109	1.229	1.294	1.402	1.534	1.707	1.894	2.121	2.383	2.670	2.977
70-74	654	728	773	839	907	978	1.058	1.142	1.239	1.360	1.514
75+	538	595	626	677	732	792	861	935	1.018	1.105	1.197
JUMLAH	156.709	169.421	174.719	184.113	193.732	203.753	214.268	225.234	236.404	247.994	260.021

Tabel II.4.2
 PROYEKSI PENDUDUK
 MENURUT JENIS KELAMIN DAN KELOMPOK UMUR
 TAHUN 2010 - 2020

PELALAWAN												PEREMPUAN											
KELOMPOK UMUR	2010	2011	2012	2013	2014	2015	2016	2017	2018	2019	2020												
(1)	(2)	(3)	(4)	(5)	(6)	(7)	(8)	(9)	(10)	(11)	(12)												
0-4	19.915	21.481	22.111	23.284	24.493	25.451	26.397	27.341	28.300	29.266	30.213												
5-9	17.015	18.201	18.520	19.242	19.989	21.022	22.114	23.266	24.512	25.792	26.781												
10-14	14.223	15.179	15.531	16.263	17.043	17.840	18.604	19.347	20.100	20.878	21.936												
15-19	13.724	14.521	14.575	14.955	15.392	15.927	16.557	17.310	18.124	18.986	19.853												
20-24	15.266	16.488	16.970	17.788	18.557	19.227	19.804	20.307	20.825	21.412	22.114												
25-29	16.395	17.578	17.915	18.698	19.565	20.565	21.632	22.746	23.831	24.847	25.710												
30-34	14.644	15.795	16.227	17.005	17.808	18.598	19.426	20.220	21.093	22.060	23.152												
35-39	11.538	12.717	13.324	14.244	15.167	16.066	16.884	17.723	18.567	19.434	20.271												
40-44	8.705	9.659	10.195	10.990	11.829	12.714	13.649	14.611	15.619	16.621	17.581												
45-49	5.971	6.653	7.057	7.652	8.294	8.982	9.708	10.478	11.301	12.167	13.065												
50-54	4.107	4.657	4.993	5.453	5.949	6.484	7.038	7.633	8.281	8.975	9.708												
55-59	2.457	2.809	3.069	3.432	3.818	4.212	4.653	5.104	5.576	6.080	6.623												
60-64	1.591	1.803	1.946	2.153	2.401	2.696	3.001	3.356	3.753	4.172	4.597												
65-69	998	1.101	1.161	1.259	1.370	1.492	1.647	1.817	2.011	2.243	2.517												
70-74	638	709	748	808	874	945	1.016	1.098	1.191	1.297	1.417												
75+	701	767	808	871	940	1.016	1.100	1.197	1.292	1.398	1.515												
JUMLAH	147.888	160.118	165.150	174.097	183.489	193.237	203.230	213.554	224.376	235.628	247.053												

Tabel II.4.3
 PROYEKSI PENDUDUK
 MENURUT JENIS KELAMIN DAN KELOMPOK UMUR
 TAHUN 2010 - 2020

PELALAWAN											
LAKI-LAKI + PEREMPUAN											
KELOMPOK UMUR	2010	2011	2012	2013	2014	2015	2016	2017	2018	2019	2020
(1)	(2)	(3)	(4)	(5)	(6)	(7)	(8)	(9)	(10)	(11)	(12)
0-4	40.156	43.199	44.391	46.637	48.930	50.764	52.665	54.574	56.475	58.389	60.297
5-9	34.363	36.791	37.460	38.977	40.516	42.590	44.705	46.969	49.347	51.795	53.730
10-14	28.447	30.414	31.130	32.591	34.143	35.752	37.333	38.857	40.415	42.013	44.149
15-19	27.780	29.345	29.497	30.337	31.290	32.446	33.815	35.376	37.017	38.772	40.580
20-24	30.520	32.965	33.901	35.482	36.914	38.156	39.266	40.327	41.429	42.693	44.212
25-29	33.043	35.474	36.293	38.010	39.888	42.015	44.227	46.471	48.593	50.531	52.187
30-34	30.641	32.832	33.564	35.060	36.664	38.216	39.994	41.797	43.739	45.881	48.286
35-39	24.896	27.345	28.550	30.367	32.084	33.792	35.297	36.870	38.486	40.233	41.907
40-44	18.854	20.885	22.021	23.698	25.432	27.243	29.167	31.119	33.078	34.936	36.768
45-49	13.203	14.689	15.576	16.888	18.283	19.764	21.343	23.012	24.756	26.572	28.454
50-54	9.106	10.265	10.970	11.951	13.007	14.158	15.356	16.657	18.056	19.551	21.130
55-59	5.639	6.447	7.018	7.796	8.617	9.466	10.402	11.370	12.385	13.479	14.671
60-64	3.311	3.759	4.088	4.560	5.096	5.698	6.352	7.079	7.870	8.704	9.566
65-69	2.107	2.330	2.455	2.661	2.904	3.199	3.541	3.938	4.394	4.913	5.494
70-74	1.292	1.437	1.521	1.647	1.781	1.923	2.074	2.240	2.430	2.657	2.931
75+	1.239	1.362	1.434	1.548	1.672	1.808	1.961	2.132	2.310	2.503	2.712
JUMLAH	304.597	329.539	339.869	358.210	377.221	396.990	417.498	438.788	460.780	483.622	507.074

Tabel II.5.1
PROYEKSI PENDUDUK
MENURUT JENIS KELAMIN DAN KELOMPOK UMUR
TAHUN 2010 - 2020

SIAK	LAKI-LAKI										
KELOMPOK UMUR	2010	2011	2012	2013	2014	2015	2016	2017	2018	2019	2020
(1)	(2)	(3)	(4)	(5)	(6)	(7)	(8)	(9)	(10)	(11)	(12)
0-4	24.610	25.213	25.857	26.480	27.082	27.409	27.781	28.127	28.426	28.720	28.966
5-9	22.832	23.360	23.794	24.223	24.627	25.280	25.863	26.500	27.123	27.758	28.088
10-14	19.573	20.019	20.492	20.955	21.450	21.953	22.419	22.808	23.198	23.590	24.207
15-19	17.805	17.932	18.046	18.174	18.360	18.639	19.019	19.442	19.861	20.331	20.795
20-24	17.107	17.648	18.127	18.508	18.768	18.908	18.988	19.073	19.175	19.359	19.628
25-29	17.393	17.854	18.329	18.818	19.355	19.961	20.536	21.056	21.468	21.766	21.906
30-34	18.569	18.883	19.209	19.546	19.952	20.283	20.768	21.278	21.813	22.428	23.106
35-39	17.393	18.189	18.927	19.580	20.081	20.556	20.856	21.180	21.522	21.967	22.311
40-44	14.589	15.411	16.229	17.037	17.826	18.603	19.405	20.160	20.827	21.356	21.844
45-49	9.553	10.136	10.743	11.378	12.028	12.686	13.371	14.064	14.750	15.436	16.100
50-54	6.052	6.482	6.906	7.336	7.788	8.273	8.759	9.278	9.819	10.384	10.949
55-59	4.071	4.443	4.821	5.207	5.595	5.986	6.396	6.809	7.227	7.676	8.153
60-64	2.255	2.448	2.680	2.940	3.218	3.504	3.819	4.146	4.477	4.817	5.156
65-69	1.437	1.521	1.602	1.695	1.813	1.970	2.137	2.337	2.563	2.808	3.057
70-74	866	921	978	1.037	1.096	1.154	1.219	1.286	1.362	1.462	1.589
75+	876	922	970	1.024	1.083	1.146	1.217	1.293	1.374	1.459	1.537
JUMLAH	194.981	201.382	207.710	213.938	220.122	226.311	232.553	238.837	244.985	251.317	257.392

Tabel II.5.2
 PROYEKSI PENDUDUK
 MENURUT JENIS KELAMIN DAN KELOMPOK UMUR
 TAHUN 2010 - 2020

SIAK	PEREMPUAN										
KELOMPOK UMUR	2010	2011	2012	2013	2014	2015	2016	2017	2018	2019	2020
(1)	(2)	(3)	(4)	(5)	(6)	(7)	(8)	(9)	(10)	(11)	(12)
0-4	23.911	24.628	25.344	26.076	26.791	27.201	27.554	27.891	28.197	28.466	28.727
5-9	22.171	22.647	23.037	23.383	23.723	24.378	25.046	25.754	26.502	27.223	27.633
10-14	19.457	19.823	20.276	20.746	21.234	21.717	22.118	22.479	22.812	23.130	23.757
15-19	17.408	17.583	17.642	17.688	17.780	17.974	18.250	18.648	19.071	19.502	19.934
20-24	16.036	16.533	17.014	17.426	17.758	17.980	18.088	18.127	18.154	18.219	18.389
25-29	17.529	17.942	18.284	18.645	19.057	19.570	20.107	20.663	21.145	21.520	21.766
30-34	18.489	19.032	19.539	20.000	20.451	20.864	21.291	21.663	22.080	22.548	23.137
35-39	15.955	16.785	17.577	18.357	19.078	19.740	20.256	20.771	21.256	21.715	22.139
40-44	12.091	12.806	13.516	14.237	14.966	15.716	16.481	17.246	18.011	18.713	19.355
45-49	7.655	8.144	8.636	9.150	9.686	10.246	10.818	11.414	12.023	12.634	13.266
50-54	4.907	5.314	5.696	6.080	6.474	6.898	7.311	7.751	8.212	8.688	9.187
55-59	3.290	3.592	3.924	4.285	4.653	5.014	5.409	5.798	6.187	6.586	7.011
60-64	1.983	2.148	2.316	2.504	2.726	2.989	3.251	3.555	3.883	4.215	4.542
65-69	1.393	1.466	1.545	1.637	1.740	1.854	1.998	2.156	2.333	2.539	2.786
70-74	849	901	950	1.002	1.058	1.117	1.175	1.239	1.314	1.395	1.490
75+	984	1.034	1.087	1.144	1.202	1.272	1.346	1.422	1.505	1.586	1.688
JUMLAH	184.108	190.378	196.383	202.360	208.377	214.530	220.499	226.577	232.685	238.679	244.807

Tabel II.5.3
PROYEKSI PENDUDUK
MENURUT JENIS KELAMIN DAN KELOMPOK UMUR
TAHUN 2010 - 2020

SIAK

LAKI-LAKI + PEREMPUAN

KELOMPOK UMUR	2010	2011	2012	2013	2014	2015	2016	2017	2018	2019	2020
(1)	(2)	(3)	(4)	(5)	(6)	(7)	(8)	(9)	(10)	(11)	(12)
0-4	48.521	49.841	51.201	52.556	53.873	54.610	55.335	56.018	56.623	57.186	57.693
5-9	45.003	46.007	46.831	47.606	48.350	49.658	50.909	52.254	53.625	54.981	55.721
10-14	39.030	39.842	40.768	41.701	42.684	43.670	44.537	45.287	46.010	46.720	47.964
15-19	35.213	35.515	35.688	35.862	36.140	36.613	37.269	38.090	38.932	39.833	40.729
20-24	33.143	34.181	35.141	35.934	36.526	36.888	37.076	37.200	37.329	37.578	38.017
25-29	34.922	35.796	36.613	37.463	38.412	39.531	40.643	41.719	42.613	43.286	43.672
30-34	37.058	37.915	38.748	39.546	40.403	41.147	42.059	42.941	43.893	44.976	46.243
35-39	33.348	34.974	36.504	37.937	39.159	40.296	41.112	41.951	42.778	43.682	44.450
40-44	26.680	28.217	29.745	31.274	32.792	34.319	35.886	37.406	38.838	40.069	41.199
45-49	17.208	18.280	19.379	20.528	21.714	22.932	24.189	25.478	26.773	28.070	29.366
50-54	10.959	11.796	12.602	13.416	14.262	15.171	16.070	17.029	18.031	19.072	20.136
55-59	7.361	8.035	8.745	9.492	10.248	11.000	11.805	12.607	13.414	14.262	15.164
60-64	4.238	4.596	4.996	5.444	5.944	6.493	7.070	7.701	8.360	9.032	9.698
65-69	2.830	2.987	3.147	3.332	3.553	3.824	4.135	4.493	4.896	5.347	5.843
70-74	1.715	1.822	1.928	2.039	2.154	2.271	2.394	2.525	2.676	2.857	3.079
75+	1.860	1.956	2.057	2.168	2.285	2.418	2.563	2.715	2.879	3.045	3.225
JUMLAH	379.089	391.760	404.093	416.298	428.499	440.841	453.052	465.414	477.670	489.996	502.199

Tabel II.6.1
 PROYEKSI PENDUDUK
 MENURUT JENIS KELAMIN DAN KELOMPOK UMUR
 TAHUN 2010 - 2020

KAMPAR											LAKI-LAKI
KELOMPOK UMUR	2010	2011	2012	2013	2014	2015	2016	2017	2018	2019	2020
(1)	(2)	(3)	(4)	(5)	(6)	(7)	(8)	(9)	(10)	(11)	(12)
0-4	43.234	44.029	45.127	46.051	46.934	47.349	47.802	48.213	48.562	48.851	49.083
5-9	39.696	40.373	41.097	41.691	42.239	43.223	44.042	44.956	45.856	46.726	47.106
10-14	37.459	38.085	38.959	39.703	40.498	41.315	42.023	42.592	43.174	43.713	44.685
15-19	35.092	35.132	35.331	35.459	35.697	36.124	36.714	37.389	38.064	38.796	39.531
20-24	32.519	33.345	34.229	34.827	35.195	35.345	35.352	35.377	35.446	35.631	35.986
25-29	31.202	31.836	32.664	33.419	34.252	35.211	36.083	36.858	37.450	37.805	37.905
30-34	32.018	32.366	32.905	33.366	33.939	34.392	35.074	35.798	36.574	37.443	38.426
35-39	28.831	29.970	31.168	32.130	32.838	33.508	33.862	34.257	34.695	35.254	35.672
40-44	23.919	25.116	26.434	27.652	28.832	29.993	31.161	32.250	33.204	33.901	34.543
45-49	18.303	19.303	20.449	21.581	22.734	23.902	25.090	26.293	27.482	28.634	29.752
50-54	12.924	13.763	14.651	15.511	16.408	17.375	18.321	19.334	20.392	21.472	22.554
55-59	8.387	9.102	9.871	10.622	11.375	12.129	12.911	13.693	14.486	15.318	16.206
60-64	4.706	5.082	5.560	6.078	6.629	7.195	7.811	8.446	9.091	9.739	10.381
65-69	3.478	3.657	3.850	4.059	4.330	4.685	5.060	5.516	6.029	6.575	7.133
70-74	2.222	2.348	2.492	2.634	2.774	2.912	3.065	3.219	3.397	3.628	3.932
75+	1.991	2.088	2.197	2.313	2.433	2.570	2.714	2.874	3.038	3.207	3.381
JUMLAH	355.981	365.595	376.984	387.096	397.107	407.228	417.085	427.065	436.940	446.693	456.276

Tabel II.6.2
PROYEKSI PENDUDUK
MENURUT JENIS KELAMIN DAN KELOMPOK UMUR
TAHUN 2010 - 2020

KAMPAR											PEREMPUAN
KELOMPOK UMUR	2010	2011	2012	2013	2014	2015	2016	2017	2018	2019	2020
(1)	(2)	(3)	(4)	(5)	(6)	(7)	(8)	(9)	(10)	(11)	(12)
0-4	40.496	41.437	42.601	43.665	44.686	45.156	45.579	45.937	46.226	46.466	46.663
5-9	37.478	38.027	38.645	39.070	39.475	40.369	41.335	42.324	43.353	44.343	44.792
10-14	35.602	36.028	36.817	37.519	38.246	38.931	39.509	39.977	40.376	40.762	41.664
15-19	33.530	33.643	33.727	33.676	33.712	33.916	34.313	34.911	35.536	36.186	36.804
20-24	30.657	31.399	32.283	32.932	33.422	33.677	33.763	33.689	33.581	33.557	33.708
25-29	31.590	32.125	32.702	33.217	33.817	34.560	35.384	36.206	36.878	37.371	37.617
30-34	30.725	31.424	32.234	32.867	33.476	33.994	34.566	35.015	35.517	36.110	36.872
35-39	26.404	27.593	28.867	30.031	31.086	32.012	32.732	33.423	34.039	34.630	35.134
40-44	21.308	22.416	23.632	24.793	25.953	27.118	28.331	29.510	30.664	31.705	32.623
45-49	16.192	17.111	18.123	19.125	20.163	21.226	22.331	23.452	24.584	25.716	26.862
50-54	10.932	11.754	12.589	13.378	14.192	15.044	15.891	16.771	17.684	18.629	19.605
55-59	7.148	7.749	8.456	9.196	9.943	10.662	11.455	12.222	12.978	13.755	14.573
60-64	4.591	4.936	5.320	5.737	6.222	6.789	7.358	8.005	8.700	9.401	10.080
65-69	3.898	4.080	4.296	4.532	4.798	5.101	5.481	5.892	6.352	6.887	7.512
70-74	2.721	2.865	3.024	3.179	3.342	3.513	3.678	3.867	4.084	4.328	4.601
75+	2.926	3.054	3.206	3.363	3.531	3.709	3.911	4.121	4.345	4.578	4.825
JUMLAH	336.198	345.641	356.522	366.280	376.064	385.777	395.617	405.322	414.897	424.424	433.935

Tabel II.6.3
PROYEKSI PENDUDUK
MENURUT JENIS KELAMIN DAN KELOMPOK UMUR
TAHUN 2010 - 2020

KAMPAR											LAKI-LAKI + PEREMPUAN
KELOMPOK UMUR	2010	2011	2012	2013	2014	2015	2016	2017	2018	2019	2020
(1)	(2)	(3)	(4)	(5)	(6)	(7)	(8)	(9)	(10)	(11)	(12)
0-4	83.730	85.466	87.728	89.716	91.620	92.505	93.381	94.150	94.788	95.317	95.746
5-9	77.174	78.400	79.742	80.761	81.714	83.592	85.377	87.280	89.209	91.069	91.898
10-14	73.061	74.113	75.776	77.222	78.744	80.246	81.532	82.569	83.550	84.475	86.349
15-19	68.622	68.775	69.058	69.135	69.409	70.040	71.027	72.300	73.600	74.982	76.335
20-24	63.176	64.744	66.512	67.759	68.617	69.022	69.115	69.066	69.027	69.188	69.694
25-29	62.792	63.961	65.366	66.636	68.069	69.771	71.467	73.064	74.328	75.176	75.522
30-34	62.743	63.790	65.139	66.233	67.415	68.386	69.640	70.813	72.091	73.553	75.298
35-39	55.235	57.563	60.035	62.161	63.924	65.520	66.594	67.680	68.734	69.884	70.806
40-44	45.227	47.532	50.066	52.445	54.785	57.111	59.492	61.760	63.868	65.606	67.166
45-49	34.495	36.414	38.572	40.706	42.897	45.128	47.421	49.745	52.066	54.350	56.614
50-54	23.856	25.517	27.240	28.889	30.600	32.419	34.212	36.105	38.076	40.101	42.159
55-59	15.535	16.851	18.327	19.818	21.318	22.791	24.366	25.915	27.464	29.073	30.779
60-64	9.297	10.018	10.880	11.815	12.851	13.984	15.169	16.451	17.791	19.140	20.461
65-69	7.376	7.737	8.146	8.591	9.128	9.786	10.541	11.408	12.381	13.462	14.645
70-74	4.943	5.213	5.516	5.813	6.116	6.425	6.743	7.086	7.481	7.956	8.533
75+	4.917	5.142	5.403	5.676	5.964	6.279	6.625	6.995	7.383	7.785	8.206
JUMLAH	692.179	711.236	733.506	753.376	773.171	793.005	812.702	832.387	851.837	871.117	890.211

Tabel II.7.1
 PROYEKSI PENDUDUK
 MENURUT JENIS KELAMIN DAN KELOMPOK UMUR
 TAHUN 2010 - 2020

ROKAN HULU

LAKI-LAKI

KELOMPOK UMUR	2010	2011	2012	2013	2014	2015	2016	2017	2018	2019	2020
(1)	(2)	(3)	(4)	(5)	(6)	(7)	(8)	(9)	(10)	(11)	(12)
0-4	32.321	33.957	34.812	36.087	37.355	38.273	39.277	40.231	41.147	42.055	42.925
5-9	28.503	29.905	30.450	31.379	32.288	33.555	34.758	36.031	37.318	38.635	39.566
10-14	25.252	26.484	27.100	28.053	29.063	30.111	31.135	32.047	32.985	33.933	35.236
15-19	22.497	23.234	23.371	23.827	24.363	25.037	25.868	26.753	27.656	28.640	29.644
20-24	22.693	24.004	24.646	25.475	26.146	26.666	27.114	27.556	28.034	28.632	29.375
25-29	23.147	24.363	25.003	25.987	27.052	28.242	29.421	30.519	31.487	32.293	32.895
30-34	22.775	23.749	24.150	24.876	25.700	26.448	27.421	28.422	29.485	30.668	31.975
35-39	18.951	20.320	21.138	22.136	22.978	23.813	24.463	25.132	25.844	26.683	27.428
40-44	15.024	16.275	17.134	18.207	19.282	20.371	21.514	22.612	23.641	24.522	25.383
45-49	11.539	12.554	13.304	14.261	15.259	16.292	17.386	18.502	19.637	20.787	21.943
50-54	8.587	9.432	10.045	10.802	11.605	12.481	13.378	14.338	15.353	16.426	17.528
55-59	5.806	6.499	7.049	7.707	8.382	9.076	9.821	10.578	11.362	12.207	13.121
60-64	3.558	3.964	4.336	4.816	5.337	5.881	6.489	7.127	7.790	8.477	9.182
65-69	2.416	2.622	2.760	2.956	3.203	3.520	3.865	4.279	4.748	5.261	5.798
70-74	1.514	1.649	1.752	1.881	2.012	2.145	2.295	2.447	2.623	2.847	3.133
75+	1.533	1.661	1.749	1.867	1.997	2.139	2.301	2.473	2.655	2.848	3.049
JUMLAH	246.116	260.672	268.799	280.317	292.022	304.050	316.506	329.047	341.765	354.914	368.181

Tabel II.7.2
 PROYEKSI PENDUDUK
 MENURUT JENIS KELAMIN DAN KELOMPOK UMUR
 TAHUN 2010 - 2020

ROKAN HULU											PEREMPUAN
KELOMPOK UMUR	2010	2011	2012	2013	2014	2015	2016	2017	2018	2019	2020
(1)	(2)	(3)	(4)	(5)	(6)	(7)	(8)	(9)	(10)	(11)	(12)
0-4	30.914	32.638	33.580	34.959	36.361	37.351	38.289	39.222	40.127	40.987	41.839
5-9	27.692	28.995	29.488	30.284	31.102	32.334	33.617	34.985	36.432	37.865	38.877
10-14	24.009	25.074	25.640	26.544	27.502	28.458	29.326	30.163	30.974	31.772	33.012
15-19	21.622	22.387	22.461	22.780	23.178	23.708	24.358	25.189	26.069	26.970	27.887
20-24	22.292	23.561	24.241	25.117	25.907	26.534	27.013	27.396	27.769	28.200	28.799
25-29	23.202	24.347	24.803	25.590	26.476	27.507	28.599	29.745	30.801	31.721	32.452
30-34	21.209	22.389	22.988	23.811	24.650	25.446	26.272	27.049	27.893	28.813	29.902
35-39	16.832	18.155	19.009	20.091	21.142	22.134	22.986	23.862	24.711	25.544	26.343
40-44	13.327	14.468	15.263	16.266	17.307	18.383	19.504	20.651	21.815	22.922	23.974
45-49	10.248	11.173	11.844	12.697	13.605	14.560	15.554	16.607	17.698	18.812	19.972
50-54	7.571	8.401	9.000	9.716	10.475	11.288	12.107	12.989	13.927	14.907	15.944
55-59	4.824	5.396	5.893	6.511	7.156	7.802	8.514	9.234	9.971	10.739	11.562
60-64	3.228	3.580	3.863	4.226	4.656	5.167	5.689	6.292	6.954	7.639	8.324
65-69	2.318	2.502	2.637	2.826	3.039	3.278	3.575	3.902	4.274	4.706	5.221
70-74	1.513	1.647	1.737	1.853	1.980	2.117	2.249	2.403	2.580	2.777	2.995
75+	1.579	1.694	1.778	1.895	2.018	2.161	2.308	2.472	2.650	2.832	3.037
JUMLAH	232.380	246.407	254.225	265.166	276.554	288.228	299.960	312.161	324.645	337.206	350.140

Tabel II.7.3
PROYEKSI PENDUDUK
MENURUT JENIS KELAMIN DAN KELOMPOK UMUR
TAHUN 2010 - 2020

ROKAN HULU

LAKI-LAKI + PEREMPUAN

KELOMPOK UMUR	2010	2011	2012	2013	2014	2015	2016	2017	2018	2019	2020
(1)	(2)	(3)	(4)	(5)	(6)	(7)	(8)	(9)	(10)	(11)	(12)
0-4	63.235	66.595	68.392	71.046	73.716	75.624	77.566	79.453	81.274	83.042	84.764
5-9	56.195	58.900	59.938	61.663	63.390	65.889	68.375	71.016	73.750	76.500	78.443
10-14	49.261	51.558	52.740	54.597	56.565	58.569	60.461	62.210	63.959	65.705	68.248
15-19	44.119	45.621	45.832	46.607	47.541	48.745	50.226	51.942	53.725	55.610	57.531
20-24	44.985	47.565	48.887	50.592	52.053	53.200	54.127	54.952	55.803	56.832	58.174
25-29	46.349	48.710	49.806	51.577	53.528	55.749	58.020	60.264	62.288	64.014	65.347
30-34	43.984	46.138	47.138	48.687	50.350	51.894	53.693	55.471	57.378	59.481	61.877
35-39	35.783	38.475	40.147	42.227	44.120	45.947	47.449	48.994	50.555	52.227	53.771
40-44	28.351	30.743	32.397	34.473	36.589	38.754	41.018	43.263	45.456	47.444	49.357
45-49	21.787	23.727	25.148	26.958	28.864	30.852	32.940	35.109	37.335	39.599	41.915
50-54	16.158	17.833	19.045	20.518	22.080	23.769	25.485	27.327	29.280	31.333	33.472
55-59	10.630	11.895	12.942	14.218	15.538	16.878	18.335	19.812	21.333	22.946	24.683
60-64	6.786	7.544	8.199	9.042	9.993	11.048	12.178	13.419	14.744	16.116	17.506
65-69	4.734	5.124	5.397	5.782	6.242	6.798	7.440	8.181	9.022	9.967	11.019
70-74	3.027	3.296	3.489	3.734	3.992	4.262	4.544	4.850	5.203	5.624	6.128
75+	3.112	3.355	3.527	3.762	4.015	4.300	4.609	4.945	5.305	5.680	6.086
JUMLAH	478.496	507.079	523.024	545.483	568.576	592.278	616.466	641.208	666.410	692.120	718.321

Tabel II.8.1
PROYEKSI PENDUDUK
MENURUT JENIS KELAMIN DAN KELOMPOK UMUR
TAHUN 2010 - 2020

BENGKALIS

LAKI-LAKI

KELOMPOK UMUR	2010	2011	2012	2013	2014	2015	2016	2017	2018	2019	2020
(1)	(2)	(3)	(4)	(5)	(6)	(7)	(8)	(9)	(10)	(11)	(12)
0-4	30.225	30.128	30.850	31.136	31.387	31.286	31.249	31.151	31.015	30.851	30.651
5-9	28.939	28.809	29.299	29.396	29.456	29.781	30.025	30.289	30.541	30.773	30.676
10-14	26.430	26.301	26.881	27.093	27.332	27.550	27.727	27.773	27.829	27.860	28.163
15-19	25.614	25.098	25.218	25.032	24.923	24.919	25.058	25.222	25.381	25.580	25.773
20-24	21.914	21.995	22.557	22.700	22.689	22.513	22.280	22.033	21.823	21.691	21.663
25-29	22.236	22.207	22.762	23.034	23.350	23.717	24.046	24.275	24.382	24.337	24.129
30-34	23.122	22.877	23.237	23.304	23.445	23.474	23.687	23.892	24.130	24.426	24.789
35-39	21.066	21.434	22.269	22.706	22.951	23.140	23.137	23.133	23.159	23.270	23.283
40-44	17.302	17.784	18.697	19.346	19.952	20.506	21.078	21.560	21.943	22.152	22.321
45-49	13.298	13.727	14.529	15.164	15.800	16.413	17.046	17.655	18.241	18.792	19.309
50-54	9.799	10.215	10.865	11.374	11.901	12.452	12.991	13.549	14.125	14.708	15.277
55-59	6.824	7.248	7.853	8.359	8.852	9.326	9.823	10.295	10.766	11.257	11.778
60-64	4.329	4.577	5.002	5.409	5.834	6.256	6.718	7.181	7.642	8.093	8.531
65-69	2.991	3.079	3.237	3.376	3.561	3.809	4.070	4.383	4.737	5.107	5.479
70-74	1.815	1.875	1.990	2.079	2.167	2.247	2.340	2.430	2.534	2.676	2.867
75+	1.531	1.572	1.653	1.719	1.790	1.866	1.950	2.044	2.134	2.231	2.322
JUMLAH	257.435	258.926	266.899	271.227	275.390	279.255	283.225	286.865	290.382	293.804	297.011

Tabel II.8.2
PROYEKSI PENDUDUK
MENURUT JENIS KELAMIN DAN KELOMPOK UMUR
TAHUN 2010 - 2020

BENGKALIS

PEREMPUAN

KELOMPOK UMUR	2010	2011	2012	2013	2014	2015	2016	2017	2018	2019	2020
(1)	(2)	(3)	(4)	(5)	(6)	(7)	(8)	(9)	(10)	(11)	(12)
0-4	28.999	29.020	29.830	30.237	30.596	30.577	30.502	30.403	30.265	30.077	29.866
5-9	27.396	27.186	27.625	27.620	27.596	27.912	28.240	28.599	28.977	29.304	29.267
10-14	25.030	24.775	25.312	25.511	25.716	25.891	25.962	25.982	25.959	25.911	26.184
15-19	23.974	23.529	23.582	23.286	23.049	22.934	22.927	23.068	23.230	23.385	23.518
20-24	21.414	21.451	22.050	22.245	22.320	22.243	22.036	21.748	21.445	21.191	21.047
25-29	22.545	22.423	22.824	22.928	23.079	23.330	23.603	23.886	24.066	24.114	23.998
30-34	22.151	22.159	22.726	22.919	23.082	23.181	23.291	23.335	23.415	23.537	23.761
35-39	18.970	19.389	20.285	20.871	21.365	21.761	21.990	22.210	22.377	22.508	22.579
40-44	15.183	15.620	16.470	17.086	17.685	18.279	18.872	19.443	19.986	20.434	20.789
45-49	11.784	12.179	12.898	13.463	14.032	14.610	15.188	15.777	16.360	16.923	17.476
50-54	8.917	9.372	10.032	10.546	11.059	11.594	12.101	12.631	13.176	13.723	14.276
55-59	6.221	6.596	7.195	7.734	8.268	8.766	9.304	9.817	10.311	10.803	11.314
60-64	3.966	4.168	4.491	4.785	5.130	5.539	5.935	6.385	6.865	7.338	7.780
65-69	2.941	3.009	3.170	3.307	3.460	3.630	3.853	4.096	4.363	4.676	5.045
70-74	1.879	1.938	2.042	2.124	2.206	2.295	2.373	2.465	2.575	2.699	2.834
75+	1.830	1.864	1.958	2.029	2.105	2.190	2.281	2.371	2.476	2.576	2.685
JUMLAH	243.200	244.678	252.490	256.691	260.748	264.732	268.458	272.216	275.846	279.199	282.419

Tabel II.8.3
PROYEKSI PENDUDUK
MENURUT JENIS KELAMIN DAN KELOMPOK UMUR
TAHUN 2010 - 2020

BENGKALIS

LAKI-LAKI + PEREMPUAN

KELOMPOK UMUR	2010	2011	2012	2013	2014	2015	2016	2017	2018	2019	2020
(1)	(2)	(3)	(4)	(5)	(6)	(7)	(8)	(9)	(10)	(11)	(12)
0-4	59.224	59.148	60.680	61.373	61.983	61.863	61.751	61.554	61.280	60.928	60.517
5-9	56.335	55.995	56.924	57.016	57.052	57.693	58.265	58.888	59.518	60.077	59.943
10-14	51.460	51.076	52.193	52.604	53.048	53.441	53.689	53.755	53.788	53.771	54.347
15-19	49.588	48.627	48.800	48.318	47.972	47.853	47.985	48.290	48.611	48.965	49.291
20-24	43.328	43.446	44.607	44.945	45.009	44.756	44.316	43.781	43.268	42.882	42.710
25-29	44.781	44.630	45.586	45.962	46.429	47.047	47.649	48.161	48.448	48.451	48.127
30-34	45.273	45.036	45.963	46.223	46.527	46.655	46.978	47.227	47.545	47.963	48.550
35-39	40.036	40.823	42.554	43.577	44.316	44.901	45.127	45.343	45.536	45.778	45.862
40-44	32.485	33.404	35.167	36.432	37.637	38.785	39.950	41.003	41.929	42.586	43.110
45-49	25.082	25.906	27.427	28.627	29.832	31.023	32.234	33.432	34.601	35.715	36.785
50-54	18.716	19.587	20.897	21.920	22.960	24.046	25.092	26.180	27.301	28.431	29.553
55-59	13.045	13.844	15.048	16.093	17.120	18.092	19.127	20.112	21.077	22.060	23.092
60-64	8.295	8.745	9.493	10.194	10.964	11.795	12.653	13.566	14.507	15.431	16.311
65-69	5.932	6.088	6.407	6.683	7.021	7.439	7.923	8.479	9.100	9.783	10.524
70-74	3.694	3.813	4.032	4.203	4.373	4.542	4.713	4.895	5.109	5.375	5.701
75+	3.361	3.436	3.611	3.748	3.895	4.056	4.231	4.415	4.610	4.807	5.007
JUMLAH	500.635	503.604	519.389	527.918	536.138	543.987	551.683	559.081	566.228	573.003	579.430

Tabel II.9.1
 PROYEKSI PENDUDUK
 MENURUT JENIS KELAMIN DAN KELOMPOK UMUR
 TAHUN 2010 - 2020

ROKAN HILIR

LAKI-LAKI

KELOMPOK UMUR	2010	2011	2012	2013	2014	2015	2016	2017	2018	2019	2020
(1)	(2)	(3)	(4)	(5)	(6)	(7)	(8)	(9)	(10)	(11)	(12)
0-4	36.192	37.052	37.971	38.847	39.696	40.139	40.626	41.066	41.463	41.797	42.090
5-9	33.859	34.619	35.236	35.837	36.402	37.332	38.140	39.017	39.893	40.738	41.159
10-14	32.198	32.909	33.659	34.391	35.169	35.959	36.673	37.250	37.848	38.403	39.346
15-19	30.599	30.794	30.965	31.157	31.447	31.894	32.499	33.172	33.852	34.575	35.309
20-24	25.110	25.883	26.567	27.101	27.458	27.636	27.714	27.795	27.916	28.121	28.465
25-29	24.409	25.037	25.684	26.346	27.074	27.893	28.656	29.337	29.880	30.226	30.376
30-34	23.559	23.940	24.335	24.739	25.230	25.624	26.201	26.801	27.447	28.158	28.964
35-39	21.166	22.117	22.998	23.769	24.357	24.910	25.237	25.589	25.977	26.452	26.827
40-44	17.585	18.563	19.534	20.487	21.417	22.329	23.258	24.126	24.900	25.474	26.016
45-49	13.797	14.628	15.495	16.394	17.315	18.245	19.202	20.167	21.129	22.061	22.976
50-54	10.420	11.156	11.874	12.604	13.367	14.187	14.999	15.864	16.770	17.696	18.630
55-59	7.124	7.770	8.426	9.091	9.760	10.430	11.132	11.831	12.547	13.296	14.098
60-64	4.079	4.429	4.844	5.310	5.807	6.315	6.874	7.450	8.038	8.630	9.220
65-69	2.571	2.718	2.861	3.025	3.233	3.508	3.798	4.149	4.545	4.968	5.402
70-74	1.701	1.805	1.916	2.031	2.145	2.256	2.381	2.506	2.651	2.837	3.080
75+	1.814	1.910	2.014	2.122	2.240	2.370	2.510	2.662	2.826	2.988	3.152
JUMLAH	286.183	295.330	304.379	313.251	322.117	331.027	339.900	348.782	357.682	366.420	375.110

Tabel II.9.2
 PROYEKSI PENDUDUK
 MENURUT JENIS KELAMIN DAN KELOMPOK UMUR
 TAHUN 2010 - 2020

ROKAN HILIR											PEREMPUAN
KELOMPOK UMUR	2010	2011	2012	2013	2014	2015	2016	2017	2018	2019	2020
(1)	(2)	(3)	(4)	(5)	(6)	(7)	(8)	(9)	(10)	(11)	(12)
0-4	34.136	35.095	36.127	37.138	38.115	38.618	39.090	39.493	39.862	40.176	40.461
5-9	32.349	32.979	33.558	34.027	34.480	35.358	36.301	37.261	38.282	39.258	39.768
10-14	30.894	31.416	32.145	32.852	33.588	34.284	34.885	35.388	35.851	36.291	37.197
15-19	29.438	29.683	29.792	29.835	29.956	30.221	30.660	31.267	31.923	32.596	33.246
20-24	24.715	25.434	26.182	26.784	27.259	27.541	27.685	27.693	27.691	27.747	27.956
25-29	24.434	24.964	25.447	25.921	26.462	27.119	27.842	28.560	29.177	29.649	29.925
30-34	22.601	23.224	23.856	24.395	24.918	25.372	25.868	26.270	26.726	27.247	27.899
35-39	19.300	20.267	21.231	22.150	22.994	23.744	24.347	24.921	25.459	25.969	26.420
40-44	15.643	16.534	17.454	18.365	19.282	20.200	21.164	22.098	23.030	23.879	24.636
45-49	12.232	12.985	13.772	14.577	15.413	16.269	17.161	18.071	18.999	19.930	20.872
50-54	8.855	9.565	10.258	10.933	11.632	12.362	13.095	13.853	14.654	15.480	16.334
55-59	5.861	6.385	6.978	7.610	8.256	8.878	9.567	10.233	10.901	11.583	12.309
60-64	3.644	3.934	4.245	4.587	4.986	5.459	5.932	6.471	7.058	7.648	8.226
65-69	2.491	2.619	2.761	2.919	3.101	3.299	3.554	3.826	4.135	4.492	4.915
70-74	1.754	1.859	1.963	2.067	2.179	2.298	2.411	2.542	2.692	2.860	3.045
75+	2.045	2.146	2.255	2.368	2.495	2.631	2.780	2.934	3.096	3.272	3.464
JUMLAH	270.392	279.089	288.024	296.528	305.116	313.653	322.342	330.881	339.536	348.077	356.673

Tabel II.9.3
 PROYEKSI PENDUDUK
 MENURUT JENIS KELAMIN DAN KELOMPOK UMUR
 TAHUN 2010 - 2020

ROKAN HILIR											LAKI-LAKI + PEREMPUAN
KELOMPOK UMUR	2010	2011	2012	2013	2014	2015	2016	2017	2018	2019	2020
(1)	(2)	(3)	(4)	(5)	(6)	(7)	(8)	(9)	(10)	(11)	(12)
0-4	70.328	72.147	74.098	75.985	77.811	78.757	79.716	80.559	81.325	81.973	82.551
5-9	66.208	67.598	68.794	69.864	70.882	72.690	74.441	76.278	78.175	79.996	80.927
10-14	63.092	64.325	65.804	67.243	68.757	70.243	71.558	72.638	73.699	74.694	76.543
15-19	60.037	60.477	60.757	60.992	61.403	62.115	63.159	64.439	65.775	67.171	68.555
20-24	49.825	51.317	52.749	53.885	54.717	55.177	55.399	55.488	55.607	55.868	56.421
25-29	48.843	50.001	51.131	52.267	53.536	55.012	56.498	57.897	59.057	59.875	60.301
30-34	46.160	47.164	48.191	49.134	50.148	50.996	52.069	53.071	54.173	55.405	56.863
35-39	40.466	42.384	44.229	45.919	47.351	48.654	49.584	50.510	51.436	52.421	53.247
40-44	33.228	35.097	36.988	38.852	40.699	42.529	44.422	46.224	47.930	49.353	50.652
45-49	26.029	27.613	29.267	30.971	32.728	34.514	36.363	38.238	40.128	41.991	43.848
50-54	19.275	20.721	22.132	23.537	24.999	26.549	28.094	29.717	31.424	33.176	34.964
55-59	12.985	14.155	15.404	16.701	18.016	19.308	20.699	22.064	23.448	24.879	26.407
60-64	7.723	8.363	9.089	9.897	10.793	11.774	12.806	13.921	15.096	16.278	17.446
65-69	5.062	5.337	5.622	5.944	6.334	6.807	7.352	7.975	8.680	9.460	10.317
70-74	3.455	3.664	3.879	4.098	4.324	4.554	4.792	5.048	5.343	5.697	6.125
75+	3.859	4.056	4.269	4.490	4.735	5.001	5.290	5.596	5.922	6.260	6.616
JUMLAH	556.575	574.419	592.403	609.779	627.233	644.680	662.242	679.663	697.218	714.497	731.783

Tabel II.10.1
PROYEKSI PENDUDUK
MENURUT JENIS KELAMIN DAN KELOMPOK UMUR
TAHUN 2010 - 2020

KEPULAUAN MERANTI

LAKI-LAKI

KELOMPOK UMUR	2010	2011	2012	2013	2014	2015	2016	2017	2018	2019	2020
(1)	(2)	(3)	(4)	(5)	(6)	(7)	(8)	(9)	(10)	(11)	(12)
0-4	8.903	8.859	8.819	8.806	8.772	8.662	8.557	8.444	8.341	8.227	8.117
5-9	9.410	9.351	9.245	9.177	9.088	9.102	9.075	9.065	9.068	9.059	8.968
10-14	9.673	9.609	9.547	9.520	9.491	9.478	9.432	9.355	9.299	9.232	9.267
15-19	9.716	9.504	9.283	9.116	8.970	8.885	8.835	8.805	8.792	8.786	8.790
20-24	7.798	7.813	7.789	7.756	7.660	7.531	7.369	7.216	7.091	6.989	6.931
25-29	7.407	7.384	7.358	7.367	7.380	7.426	7.446	7.442	7.415	7.338	7.226
30-34	7.386	7.296	7.204	7.148	7.106	7.047	7.033	7.025	7.038	7.064	7.120
35-39	6.888	6.996	7.067	7.129	7.120	7.112	7.032	6.962	6.915	6.889	6.845
40-44	5.525	5.669	5.795	5.931	6.045	6.155	6.257	6.337	6.398	6.405	6.408
45-49	5.213	5.371	5.527	5.708	5.876	6.047	6.211	6.370	6.529	6.670	6.805
50-54	4.018	4.180	4.322	4.477	4.628	4.798	4.951	5.113	5.287	5.458	5.630
55-59	3.047	3.231	3.403	3.584	3.750	3.915	4.077	4.231	4.389	4.551	4.727
60-64	2.180	2.301	2.444	2.614	2.786	2.961	3.143	3.327	3.512	3.688	3.861
65-69	1.622	1.666	1.705	1.757	1.832	1.942	2.052	2.188	2.346	2.508	2.672
70-74	909	939	968	1.002	1.030	1.058	1.089	1.120	1.160	1.214	1.292
75+	784	798	819	846	869	898	929	961	997	1.032	1.068
JUMLAH	90.479	90.967	91.295	91.938	92.403	93.017	93.488	93.961	94.577	95.110	95.727

Tabel II.10.2
 PROYEKSI PENDUDUK
 MENURUT JENIS KELAMIN DAN KELOMPOK UMUR
 TAHUN 2010 - 2020

KEPULAUAN MERANTI

PEREMPUAN

KELOMPOK UMUR	2010	2011	2012	2013	2014	2015	2016	2017	2018	2019	2020
(1)	(2)	(3)	(4)	(5)	(6)	(7)	(8)	(9)	(10)	(11)	(12)
0-4	8.350	8.344	8.325	8.347	8.353	8.261	8.159	8.063	7.940	7.827	7.703
5-9	9.007	8.925	8.802	8.703	8.601	8.608	8.624	8.656	8.678	8.705	8.617
10-14	9.080	8.975	8.899	8.870	8.845	8.810	8.750	8.679	8.577	8.493	8.506
15-19	9.329	9.142	8.893	8.685	8.504	8.373	8.291	8.269	8.235	8.225	8.198
20-24	7.151	7.153	7.136	7.119	7.068	6.970	6.839	6.689	6.524	6.393	6.293
25-29	7.118	7.069	6.982	6.934	6.903	6.903	6.916	6.938	6.918	6.876	6.782
30-34	7.164	7.153	7.121	7.102	7.076	7.032	6.996	6.947	6.898	6.878	6.882
35-39	6.008	6.132	6.226	6.336	6.419	6.470	6.477	6.482	6.461	6.448	6.411
40-44	5.393	5.539	5.667	5.815	5.952	6.085	6.219	6.349	6.454	6.541	6.593
45-49	4.787	4.940	5.077	5.240	5.405	5.568	5.731	5.899	6.051	6.209	6.354
50-54	3.806	3.996	4.150	4.314	4.474	4.640	4.797	4.962	5.121	5.292	5.457
55-59	2.740	2.902	3.071	3.265	3.454	3.623	3.808	3.982	4.139	4.302	4.467
60-64	2.100	2.203	2.307	2.432	2.580	2.754	2.923	3.116	3.315	3.514	3.692
65-69	1.534	1.567	1.599	1.652	1.709	1.774	1.864	1.963	2.067	2.199	2.350
70-74	981	1.009	1.031	1.060	1.092	1.123	1.150	1.185	1.224	1.272	1.323
75+	962	988	1.006	1.027	1.056	1.084	1.120	1.157	1.193	1.232	1.274
JUMLAH	85.510	86.037	86.292	86.901	87.491	88.078	88.664	89.336	89.795	90.406	90.902

Tabel II.10.3
PROYEKSI PENDUDUK
MENURUT JENIS KELAMIN DAN KELOMPOK UMUR
TAHUN 2010 - 2020

KEPULAUAN MERANTI

LAKI-LAKI + PEREMPUAN

KELOMPOK UMUR	2010	2011	2012	2013	2014	2015	2016	2017	2018	2019	2020
(1)	(2)	(3)	(4)	(5)	(6)	(7)	(8)	(9)	(10)	(11)	(12)
0-4	17.253	17.203	17.144	17.153	17.125	16.923	16.716	16.507	16.281	16.054	15.820
5-9	18.417	18.276	18.047	17.880	17.689	17.710	17.699	17.721	17.746	17.764	17.585
10-14	18.753	18.584	18.446	18.390	18.336	18.288	18.182	18.034	17.876	17.725	17.773
15-19	19.045	18.646	18.176	17.801	17.474	17.258	17.126	17.074	17.027	17.011	16.988
20-24	14.949	14.966	14.925	14.875	14.728	14.501	14.208	13.905	13.615	13.382	13.224
25-29	14.525	14.453	14.340	14.301	14.283	14.329	14.362	14.380	14.333	14.214	14.008
30-34	14.550	14.449	14.325	14.250	14.182	14.079	14.029	13.972	13.936	13.942	14.002
35-39	12.896	13.128	13.293	13.465	13.539	13.582	13.509	13.444	13.376	13.337	13.256
40-44	10.918	11.208	11.462	11.746	11.997	12.240	12.476	12.686	12.852	12.946	13.001
45-49	10.000	10.311	10.604	10.948	11.281	11.615	11.942	12.269	12.580	12.879	13.159
50-54	7.824	8.176	8.472	8.791	9.102	9.438	9.748	10.075	10.408	10.750	11.087
55-59	5.787	6.133	6.474	6.849	7.204	7.538	7.885	8.213	8.528	8.853	9.194
60-64	4.280	4.504	4.751	5.046	5.366	5.715	6.066	6.443	6.827	7.202	7.553
65-69	3.156	3.233	3.304	3.409	3.541	3.716	3.916	4.151	4.413	4.707	5.022
70-74	1.890	1.948	1.999	2.062	2.122	2.181	2.239	2.305	2.384	2.486	2.615
75+	1.746	1.786	1.825	1.873	1.925	1.982	2.049	2.118	2.190	2.264	2.342
JUMLAH	175.989	177.004	177.587	178.839	179.894	181.095	182.152	183.297	184.372	185.516	186.629

Tabel II.11.1
PROYEKSI PENDUDUK
MENURUT JENIS KELAMIN DAN KELOMPOK UMUR
TAHUN 2010 - 2020

KOTA PEKANBARU

LAKI-LAKI

KELOMPOK UMUR	2010	2011	2012	2013	2014	2015	2016	2017	2018	2019	2020
(1)	(2)	(3)	(4)	(5)	(6)	(7)	(8)	(9)	(10)	(11)	(12)
0-4	51.258	52.277	53.565	54.656	55.782	56.337	56.922	57.467	57.929	58.308	58.623
5-9	44.162	44.983	45.777	46.436	47.106	48.258	49.212	50.281	51.329	52.334	52.792
10-14	40.186	40.916	41.845	42.642	43.553	44.478	45.279	45.936	46.601	47.214	48.292
15-19	47.881	48.009	48.269	48.437	48.825	49.466	50.314	51.290	52.256	53.290	54.340
20-24	57.025	58.560	60.094	61.137	61.867	62.200	62.262	62.368	62.537	62.901	63.573
25-29	45.109	46.088	47.271	48.358	49.632	51.078	52.384	53.560	54.463	55.012	55.196
30-34	41.917	42.436	43.131	43.727	44.537	45.183	46.118	47.116	48.174	49.350	50.678
35-39	37.508	39.044	40.591	41.843	42.821	43.746	44.238	44.801	45.406	46.167	46.746
40-44	30.359	31.927	33.591	35.138	36.684	38.205	39.721	41.152	42.402	43.315	44.166
45-49	24.153	25.512	27.017	28.511	30.073	31.654	33.254	34.885	36.487	38.044	39.554
50-54	17.326	18.480	19.668	20.819	22.054	23.382	24.670	26.061	27.508	28.983	30.461
55-59	11.558	12.559	13.618	14.656	15.714	16.776	17.870	18.971	20.086	21.250	22.497
60-64	6.591	7.131	7.799	8.527	9.311	10.118	10.990	11.895	12.814	13.734	14.651
65-69	4.557	4.799	5.051	5.326	5.691	6.167	6.662	7.270	7.953	8.677	9.419
70-74	2.714	2.870	3.046	3.221	3.398	3.571	3.762	3.954	4.175	4.462	4.840
75+	2.007	2.108	2.224	2.335	2.467	2.598	2.742	2.910	3.086	3.258	3.444
JUMLAH	464.311	477.699	492.557	505.769	519.515	533.217	546.400	559.917	573.206	586.299	599.272

Tabel II.11.2
 PROYEKSI PENDUDUK
 MENURUT JENIS KELAMIN DAN KELOMPOK UMUR
 TAHUN 2010 - 2020

KOTA PEKANBARU

PEREMPUAN

KELOMPOK UMUR	2010	2011	2012	2013	2014	2015	2016	2017	2018	2019	2020
(1)	(2)	(3)	(4)	(5)	(6)	(7)	(8)	(9)	(10)	(11)	(12)
0-4	46.049	47.165	48.500	49.762	50.967	51.549	52.090	52.551	52.948	53.278	53.540
5-9	40.636	41.264	41.938	42.432	42.907	43.917	45.021	46.149	47.331	48.466	48.994
10-14	37.707	38.197	39.032	39.811	40.616	41.378	42.037	42.577	43.057	43.509	44.506
15-19	50.086	50.294	50.428	50.412	50.516	50.880	51.546	52.497	53.504	54.542	55.514
20-24	55.438	56.832	58.437	59.659	60.589	61.102	61.325	61.252	61.140	61.167	61.489
25-29	43.998	44.783	45.588	46.340	47.202	48.281	49.489	50.689	51.697	52.451	52.831
30-34	40.043	40.993	42.050	42.918	43.748	44.461	45.259	45.895	46.610	47.435	48.471
35-39	34.017	35.588	37.235	38.770	40.166	41.395	42.383	43.317	44.174	44.990	45.678
40-44	27.504	28.957	30.535	32.058	33.584	35.119	36.735	38.297	39.840	41.236	42.454
45-49	20.981	22.189	23.509	24.830	26.199	27.604	29.072	30.560	32.081	33.592	35.114
50-54	15.029	16.170	17.318	18.424	19.551	20.741	21.939	23.175	24.468	25.804	27.174
55-59	10.354	11.239	12.262	13.340	14.430	15.485	16.651	17.780	18.901	20.055	21.263
60-64	5.975	6.429	6.925	7.471	8.106	8.855	9.607	10.464	11.390	12.324	13.227
65-69	4.630	4.855	5.111	5.391	5.711	6.067	6.529	7.018	7.570	8.213	8.972
70-74	3.068	3.236	3.413	3.589	3.772	3.972	4.162	4.380	4.631	4.909	5.219
75+	3.212	3.357	3.514	3.698	3.888	4.095	4.321	4.570	4.811	5.089	5.352
JUMLAH	438.727	451.548	465.795	478.905	491.952	504.901	518.166	531.171	544.153	557.060	569.798

Tabel II.11.3
 PROYEKSI PENDUDUK
 MENURUT JENIS KELAMIN DAN KELOMPOK UMUR
 TAHUN 2010 - 2020

KOTA PEKANBARU

LAKI-LAKI + PEREMPUAN

KELOMPOK UMUR	2010	2011	2012	2013	2014	2015	2016	2017	2018	2019	2020
(1)	(2)	(3)	(4)	(5)	(6)	(7)	(8)	(9)	(10)	(11)	(12)
0-4	97.307	99.442	102.065	104.418	106.749	107.886	109.012	110.018	110.877	111.586	112.163
5-9	84.798	86.247	87.715	88.868	90.013	92.175	94.233	96.430	98.660	100.800	101.786
10-14	77.893	79.113	80.877	82.453	84.169	85.856	87.316	88.513	89.658	90.723	92.798
15-19	97.967	98.303	98.697	98.849	99.341	100.346	101.860	103.787	105.760	107.832	109.854
20-24	112.463	115.392	118.531	120.796	122.456	123.302	123.587	123.620	123.677	124.068	125.062
25-29	89.107	90.871	92.859	94.698	96.834	99.359	101.873	104.249	106.160	107.463	108.027
30-34	81.960	83.429	85.181	86.645	88.285	89.644	91.377	93.011	94.784	96.785	99.149
35-39	71.525	74.632	77.826	80.613	82.987	85.141	86.621	88.118	89.580	91.157	92.424
40-44	57.863	60.884	64.126	67.196	70.268	73.324	76.456	79.449	82.242	84.551	86.620
45-49	45.134	47.701	50.526	53.341	56.272	59.258	62.326	65.445	68.568	71.636	74.668
50-54	32.355	34.650	36.986	39.243	41.605	44.123	46.609	49.236	51.976	54.787	57.635
55-59	21.912	23.798	25.880	27.996	30.144	32.261	34.521	36.751	38.987	41.305	43.760
60-64	12.566	13.560	14.724	15.998	17.417	18.973	20.597	22.359	24.204	26.058	27.878
65-69	9.187	9.654	10.162	10.717	11.402	12.234	13.191	14.288	15.523	16.890	18.391
70-74	5.782	6.106	6.459	6.810	7.170	7.543	7.924	8.334	8.806	9.371	10.059
75+	5.219	5.465	5.738	6.033	6.355	6.693	7.063	7.480	7.897	8.347	8.796
JUMLAH	903.038	929.247	958.352	984.674	1.011.467	1.038.118	1.064.566	1.091.088	1.117.359	1.143.359	1.169.070

Tabel II.12.1
 PROYEKSI PENDUDUK
 MENURUT JENIS KELAMIN DAN KELOMPOK UMUR
 TAHUN 2010 - 2020

KOTA DUMAI

LAKI-LAKI

KELOMPOK UMUR	2010	2011	2012	2013	2014	2015	2016	2017	2018	2019	2020
(1)	(2)	(3)	(4)	(5)	(6)	(7)	(8)	(9)	(10)	(11)	(12)
0-4	16.056	16.205	16.586	16.839	17.088	17.137	17.223	17.285	17.328	17.326	17.330
5-9	14.081	14.193	14.428	14.562	14.689	14.942	15.157	15.395	15.628	15.830	15.885
10-14	12.672	12.767	13.043	13.224	13.430	13.621	13.791	13.908	14.031	14.121	14.370
15-19	12.951	12.848	12.905	12.884	12.915	12.992	13.145	13.320	13.496	13.673	13.869
20-24	11.960	12.154	12.460	12.613	12.692	12.669	12.615	12.562	12.525	12.516	12.584
25-29	12.138	12.273	12.576	12.800	13.064	13.349	13.618	13.840	13.996	14.044	14.019
30-34	11.803	11.824	12.006	12.110	12.266	12.356	12.544	12.740	12.954	13.182	13.467
35-39	10.387	10.700	11.114	11.397	11.599	11.765	11.837	11.914	12.008	12.130	12.219
40-44	8.369	8.708	9.154	9.526	9.889	10.226	10.577	10.892	11.161	11.327	11.490
45-49	6.811	7.119	7.532	7.907	8.294	8.668	9.059	9.446	9.825	10.176	10.527
50-54	5.097	5.379	5.718	6.023	6.343	6.678	7.010	7.361	7.725	8.086	8.456
55-59	3.597	3.868	4.190	4.485	4.783	5.069	5.371	5.668	5.969	6.273	6.606
60-64	2.344	2.510	2.741	2.981	3.237	3.493	3.774	4.061	4.351	4.634	4.917
65-69	1.417	1.478	1.554	1.629	1.731	1.861	2.001	2.171	2.361	2.560	2.765
70-74	865	907	960	1.010	1.059	1.105	1.158	1.209	1.271	1.350	1.455
75+	687	712	748	786	821	861	911	959	1.009	1.059	1.109
JUMLAH	131.235	133.645	137.715	140.776	143.900	146.792	149.791	152.731	155.638	158.287	161.068

Tabel II.12.2
 PROYEKSI PENDUDUK
 MENURUT JENIS KELAMIN DAN KELOMPOK UMUR
 TAHUN 2010 - 2020

KOTA DUMAI

PEREMPUAN

KELOMPOK UMUR	2010	2011	2012	2013	2014	2015	2016	2017	2018	2019	2020
(1)	(2)	(3)	(4)	(5)	(6)	(7)	(8)	(9)	(10)	(11)	(12)
0-4	15.232	15.446	15.881	16.201	16.491	16.590	16.670	16.711	16.735	16.759	16.738
5-9	13.404	13.478	13.698	13.784	13.854	14.106	14.376	14.643	14.924	15.207	15.280
10-14	12.176	12.213	12.480	12.658	12.836	13.008	13.141	13.229	13.295	13.373	13.594
15-19	12.136	12.069	12.098	12.024	11.973	11.992	12.076	12.222	12.379	12.558	12.704
20-24	11.468	11.640	11.968	12.150	12.265	12.306	12.279	12.188	12.091	12.038	12.026
25-29	11.966	12.059	12.275	12.408	12.563	12.783	13.028	13.263	13.441	13.570	13.584
30-34	11.514	11.670	11.968	12.148	12.306	12.441	12.592	12.691	12.811	12.975	13.178
35-39	9.449	9.787	10.239	10.603	10.916	11.193	11.391	11.574	11.729	11.887	11.995
40-44	7.611	7.936	8.364	8.735	9.095	9.463	9.838	10.195	10.540	10.856	11.107
45-49	6.312	6.610	7.001	7.354	7.712	8.082	8.462	8.841	9.222	9.610	9.981
50-54	4.712	5.018	5.375	5.684	5.997	6.328	6.652	6.985	7.331	7.693	8.051
55-59	3.164	3.399	3.709	4.015	4.315	4.609	4.928	5.228	5.526	5.835	6.150
60-64	1.876	1.996	2.151	2.304	2.484	2.700	2.913	3.157	3.416	3.681	3.926
65-69	1.208	1.251	1.317	1.384	1.455	1.537	1.643	1.752	1.875	2.025	2.197
70-74	795	829	875	914	956	1.001	1.042	1.091	1.146	1.207	1.274
75+	838	867	908	947	991	1.036	1.086	1.137	1.193	1.251	1.313
JUMLAH	123.861	126.268	130.307	133.313	136.209	139.175	142.117	144.907	147.654	150.525	153.098

Tabel II.12.3
 PROYEKSI PENDUDUK
 MENURUT JENIS KELAMIN DAN KELOMPOK UMUR
 TAHUN 2010 - 2020

KOTA DUMAI

LAKI-LAKI + PEREMPUAN

KELOMPOK UMUR	2010	2011	2012	2013	2014	2015	2016	2017	2018	2019	2020
(1)	(2)	(3)	(4)	(5)	(6)	(7)	(8)	(9)	(10)	(11)	(12)
0-4	31.288	31.651	32.467	33.040	33.579	33.727	33.893	33.996	34.063	34.085	34.068
5-9	27.485	27.671	28.126	28.346	28.543	29.048	29.533	30.038	30.552	31.037	31.165
10-14	24.848	24.980	25.523	25.882	26.266	26.629	26.932	27.137	27.326	27.494	27.964
15-19	25.087	24.917	25.003	24.908	24.888	24.984	25.221	25.542	25.875	26.231	26.573
20-24	23.428	23.794	24.428	24.763	24.957	24.975	24.894	24.750	24.616	24.554	24.610
25-29	24.104	24.332	24.851	25.208	25.627	26.132	26.646	27.103	27.437	27.614	27.603
30-34	23.317	23.494	23.974	24.258	24.572	24.797	25.136	25.431	25.765	26.157	26.645
35-39	19.836	20.487	21.353	22.000	22.515	22.958	23.228	23.488	23.737	24.017	24.214
40-44	15.980	16.644	17.518	18.261	18.984	19.689	20.415	21.087	21.701	22.183	22.597
45-49	13.123	13.729	14.533	15.261	16.006	16.750	17.521	18.287	19.047	19.786	20.508
50-54	9.809	10.397	11.093	11.707	12.340	13.006	13.662	14.346	15.056	15.779	16.507
55-59	6.761	7.267	7.899	8.500	9.098	9.678	10.299	10.896	11.495	12.108	12.756
60-64	4.220	4.506	4.892	5.285	5.721	6.193	6.687	7.218	7.767	8.315	8.843
65-69	2.625	2.729	2.871	3.013	3.186	3.398	3.644	3.923	4.236	4.585	4.962
70-74	1.660	1.736	1.835	1.924	2.015	2.106	2.200	2.300	2.417	2.557	2.729
75+	1.525	1.579	1.656	1.733	1.812	1.897	1.997	2.096	2.202	2.310	2.422
JUMLAH	255.096	259.913	268.022	274.089	280.109	285.967	291.908	297.638	303.292	308.812	314.166

DATA

MENCERDASKAN BANGSA

<http://www.bps.go.id>



BADAN PUSAT STATISTIK

Jl. Dr. Sutomo 6-8 Jakarta 10710

Tel. : (021) 3841195, 3842508, 3810291-4 Fax. : (021) 3857046

Homepage : <http://www.bps.go.id> E-mail : bpsHQ@bps.go.id