

**Proyeksi
Penduduk Kabupaten/Kota
Provinsi Banten**

2010-2020



**BADAN PUSAT STATISTIK
UNITED NATIONS POPULATION FUND**

JAKARTA 2015



BADAN PUSAT STATISTIK



**Proyeksi
Penduduk Kabupaten/Kota
Provinsi Banten**

2010-2020



**PROYEKSI PENDUDUK KABUPATEN/KOTA
TAHUN 2010 – 2020 PROVINSI BANTEN**

Pengarah:

Drs. Razali Ritonga, MA

Tim Teknis:

Dr. Indra Murty Surbakti, MA; Poetrijanti, S.Si; Dendi Handiyatmo SST, M.Si;
Hermawan Agustina, S.Kom;

Penyusun/Penulis:

Nuraini, S.ST

Yogo Aryo Jatmiko, S.ST

Pengolah Data:

Trophy Endah Rahayu, M.Si

Layout:

Subekti, M.Sc

<http://www.bps.go.id>

KATA PENGANTAR

Proyeksi Penduduk Indonesia tahun 2010 - 2035 yang merupakan proyeksi penduduk untuk tingkat nasional dan provinsi telah diterbitkan pada tahun 2013. Untuk memenuhi kebutuhan data penduduk pada tingkat kabupaten/kota maka disusun proyeksi ini berdasarkan hasil Sensus Penduduk 2010 dan sesuai dengan asumsi penghitungan proyeksi nasional dan provinsi. Adapun metode yang digunakan memanfaatkan tren pertumbuhan penduduk sejak tahun 2000, dimana data kabupaten/kota sudah tersedia.

Publikasi Proyeksi Kabupaten/Kota disusun untuk periode 2010 - 2020 dengan tujuan untuk menunjang perencanaan pada tingkat kabupaten/kota di masa kini dan mendatang. Periode yang disampaikan cukup singkat dengan pertimbangan agar tren yang digunakan tidak terlalu menyimpang, sehingga hasil proyeksi ini masih dianggap realistis. Dengan demikian, untuk saat ini Badan Pusat Statistik telah menyediakan data proyeksi penduduk tingkat nasional, provinsi, dan kabupaten/kota yang dapat dimanfaatkan oleh semua pengguna data.

Penyusunan buku ini merupakan hasil kerja sama antara BPS dan UNFPA. Kami mengucapkan terima kasih kepada semua pihak yang telah membantu penyusunan buku ini. Semoga bermanfaat dan dapat memenuhi kebutuhan semua pihak yang memerlukan, khususnya bagi pihak yang berminat pada masalah sosial dan kependudukan.

Jakarta, Juni 2015

Kepala Badan Pusat Statistik,



Dr. Suryamin, M.Sc

<http://www.bps.go.id>

DAFTAR ISI

	Halaman
KATA PENGANTAR	iii
DAFTAR ISI	v
BAB I. PENDAHULUAN	1
BAB II. METODOLOGI	3
LAMPIRAN	
Tabel I.1 Proyeksi Penduduk Menurut Kabupaten/Kota dan Jenis Kelamin Tahun 2010 - 2020	7
Tabel I.2 Rasio Jenis Kelamin Menurut Kabupaten/Kota Tahun 2010 - 2020	10
Tabel I.3 Rasio Ketergantungan Menurut Kabupaten/Kota Tahun 2010 - 2020.....	11
Tabel I.4 Persentase Penduduk Perkotaan Menurut Kabupaten/Kota Tahun 2010 - 2020	12
Tabel I.5 Persentase Penduduk Lansia Menurut Kabupaten/Kota Tahun 2010 - 2020..	13
Gambar I Piramida Penduduk Menurut Kabupaten/Kota Tahun 2010 - 2020.....	14
Tabel II Proyeksi Penduduk Menurut Jenis Kelamin dan Kelompok Umur Tahun 2010 - 2020	22

<http://www.bps.go.id>

BAB I

PENDAHULUAN

Informasi mengenai jumlah penduduk untuk wilayah kabupaten/kota pada suatu waktu tertentu dibutuhkan dalam perencanaan program dan penentuan kebijakan di wilayah tersebut. Ketersediaan data penduduk dapat dipenuhi dari hasil sensus penduduk ataupun survei tentang kependudukan namun sayangnya tidak setiap tahun tersedia. Oleh karena itu, perlu dibuat suatu perkiraan mengenai jumlah penduduk untuk wilayah kabupaten/kota untuk mengisi kekosongan pada tahun-tahun tertentu atau untuk masa yang akan datang. Ketersediaan data penduduk selain jumlahnya juga dilengkapi dengan karakteristik jenis kelamin dan umur.

Secara nasional dan pada tingkat provinsi informasi penduduk masa yang datang diproyeksikan menggunakan metode komponen, dimana metode tersebut mempertimbangkan pengaruh kelahiran, kematian, dan perpindahan. Untuk tingkat kabupaten/kota dilakukan estimasi penduduk dengan mempertimbangkan laju pertumbuhan untuk masing-masing kabupaten/kota, dimana jumlahnya dipagu dari hasil proyeksi provinsinya. Metode estimasi yang digunakan untuk memperkirakan penduduk masa yang akan datang menggunakan metode geometrik. Pemilihan metode ini didasarkan kesesuaian pertambahan secara geometrik dengan perkembangan jumlah penduduk dan disadari bahwa belum dapat dilakukannya proyeksi komponen untuk kabupaten/kota karena komponen pertumbuhan belum tersedia lengkap.

Proyeksi penduduk kabupaten/kota menurut kelompok umur, dan jenis kelamin yang disajikan dalam publikasi ini mencakup kurun waktu sepuluh tahun, mulai tahun 2010 sampai dengan 2020. Pembuatan proyeksi dengan kurun waktu singkat ini dimaksudkan agar hasilnya dapat digunakan untuk berbagai keperluan terutama perencanaan di masa datang.

<http://www.bps.go.id>

BAB II

METODOLOGI

Estimasi penduduk dengan metode geometrik menggunakan asumsi bahwa jumlah penduduk akan bertambah secara geometrik menggunakan dasar perhitungan bunga majemuk. Laju pertumbuhan penduduk (*rate of growth*) dianggap sama untuk setiap tahun. Berikut formula yang digunakan pada metode geometrik:

$$P_t = P_0(1+r)^t$$

$$r = \left(\frac{P_t}{P_0}\right)^{\frac{1}{t}} - 1$$

dimana:

- P_t = jumlah penduduk pada tahun t
- P_0 = jumlah penduduk pada tahun awal
- r = laju pertumbuhan penduduk
- t = periode waktu antara tahun dasar dan tahun t (dalam tahun)

Data yang dibutuhkan:

- Jumlah penduduk Indonesia hasil proyeksi penduduk 2010 - 2020 yang dirinci menurut provinsi.
- Jumlah penduduk kabupaten/kota hasil SP2000, SP2010, khusus untuk kabupaten/kota di Provinsi Aceh dan Pulau Nias menggunakan data hasil SPAN2005.

Tahapan menghitung proyeksi penduduk kabupaten/kota:

1. Menentukan sumber data dari hasil sensus penduduk dan menyiapkan dua data penduduk untuk tahun yang berbeda pada suatu wilayah yang akan diestimasi.
2. Menghitung rata-rata laju pertumbuhan penduduk (LPP) per tahun dengan metode geometrik berdasarkan jumlah penduduk dari dua data.

3. Melakukan proses prorata, agar penjumlahan penduduk untuk semua kabupaten/kota menjadi sama dengan penduduk provinsi (penduduk provinsi sebagai kontrol).
4. Jumlah penduduk per kabupaten/kota ini selanjutnya akan digunakan sebagai kontrol untuk menghitung jumlah penduduk menurut kota/desa, jenis kelamin, maupun menurut kelompok umur.
5. Estimasi penduduk untuk karakteristik jenis kelamin diolah terlebih dahulu, kemudian dilanjutkan dengan estimasi penduduk perkotaan dan perdesaan.
6. Melakukan proses iterasi untuk penduduk kabupaten/kota menurut jenis kelamin dan kelompok umur, dengan jumlah penduduk provinsi sebagai kontrol.
7. Untuk kabupaten/kota pemekaran yang pada saat sensus belum terbentuk, data ditelusuri menggunakan data SP2000, SPAN2005, dan SP2010.

LAMPIRAN

<http://www.ips.go.id>

Tabel I.1.1
 PROYEKSI PENDUDUK
 MENURUT KABUPATEN/KOTA DAN JENIS KELAMIN
 TAHUN 2010 - 2020

BANTEN

LAKI-LAKI

KABUPATEN/KOTA	2010	2011	2012	2013	2014	2015	2016	2017	2018	2019	2020
(1)	(2)	(3)	(4)	(5)	(6)	(7)	(8)	(9)	(10)	(11)	(12)
PANDEGLANG	590.399	595.201	599.699	604.603	607.304	610.412	613.108	615.297	617.012	618.304	619.200
LEBAK	620.598	627.500	633.998	640.002	645.703	650.912	655.607	659.796	663.511	666.802	669.498
TANGERANG	1.461.578	1.512.883	1.564.979	1.617.090	1.671.390	1.724.915	1.779.102	1.833.470	1.887.915	1.942.490	1.996.977
SERANG	715.492	722.894	729.792	736.297	742.298	747.808	752.703	757.089	760.808	764.097	766.593
KOTA TANGERANG	924.491	948.894	973.192	997.398	1.021.298	1.045.113	1.068.606	1.091.787	1.114.613	1.136.898	1.158.791
KOTA CILEGON	192.500	196.301	200.000	203.502	207.002	210.505	213.803	217.000	220.105	223.002	225.800
KOTA SERANG	298.198	304.699	311.199	317.501	323.701	329.806	335.803	341.597	347.305	352.601	357.899
KOTA TANGERANG SELATAN	655.196	679.098	703.297	727.802	752.600	777.713	802.908	828.392	854.013	879.701	905.296
JUMLAH	5.458.452	5.587.470	5.716.156	5.844.195	5.971.296	6.097.184	6.221.640	6.344.428	6.465.282	6.583.895	6.700.054

Tabel I.1.2
 PROYEKSI PENDUDUK
 MENURUT KABUPATEN/KOTA DAN JENIS KELAMIN
 TAHUN 2010 - 2020

BANTEN

PEREMPUAN

KABUPATEN/KOTA	2010	2011	2012	2013	2014	2015	2016	2017	2018	2019	2020
(1)	(2)	(3)	(4)	(5)	(6)	(7)	(8)	(9)	(10)	(11)	(12)
PANDEGLANG	563.808	568.704	573.207	578.403	581.101	584.499	587.404	589.906	591.999	593.605	594.807
LEBAK	588.609	595.405	601.808	607.904	613.602	618.900	623.805	628.307	632.299	635.806	638.908
TANGERANG	1.390.604	1.440.194	1.490.702	1.540.690	1.593.386	1.645.679	1.698.393	1.751.300	1.804.778	1.858.297	1.911.903
SERANG	693.304	700.800	707.903	714.597	720.796	726.493	731.799	736.502	740.693	744.300	747.403
KOTA TANGERANG	884.007	907.701	931.406	954.998	978.596	1.001.992	1.025.100	1.048.104	1.070.691	1.093.003	1.114.906
KOTA CILEGON	183.904	187.602	191.203	194.802	198.301	201.601	204.902	208.103	211.200	214.203	217.003
KOTA SERANG	282.604	288.902	295.103	301.301	307.400	313.399	319.201	325.003	330.499	336.002	341.203
KOTA TANGERANG SELATAN	643.308	667.004	691.108	715.601	740.399	765.496	790.904	816.507	842.295	868.205	894.309
JUMLAH	5.230.148	5.356.312	5.482.440	5.608.296	5.733.581	5.858.059	5.981.508	6.103.732	6.224.454	6.343.421	6.460.442

Tabel I.1.3
 PROYEKSI PENDUDUK
 MENURUT KABUPATEN/KOTA DAN JENIS KELAMIN
 TAHUN 2010 - 2020

BANTEN

LAKI-LAKI + PEREMPUAN

KABUPATEN/KOTA	2010	2011	2012	2013	2014	2015	2016	2017	2018	2019	2020
(1)	(2)	(3)	(4)	(5)	(6)	(7)	(8)	(9)	(10)	(11)	(12)
PANDEGLANG	1.154.207	1.163.905	1.172.906	1.183.006	1.188.405	1.194.911	1.200.512	1.205.203	1.209.011	1.211.909	1.214.007
LEBAK	1.209.207	1.222.905	1.235.806	1.247.906	1.259.305	1.269.812	1.279.412	1.288.103	1.295.810	1.302.608	1.308.406
TANGERANG	2.852.182	2.953.077	3.055.681	3.157.780	3.264.776	3.370.594	3.477.495	3.584.770	3.692.693	3.800.787	3.908.880
SERANG	1.408.796	1.423.694	1.437.695	1.450.894	1.463.094	1.474.301	1.484.502	1.493.591	1.501.501	1.508.397	1.513.996
KOTA TANGERANG	1.808.498	1.856.595	1.904.598	1.952.396	1.999.894	2.047.105	2.093.706	2.139.891	2.185.304	2.229.901	2.273.697
KOTA CILEGON	376.404	383.903	391.203	398.304	405.303	412.106	418.705	425.103	431.305	437.205	442.803
KOTA SERANG	580.802	593.601	606.302	618.802	631.101	643.205	655.004	666.600	677.804	688.603	699.102
KOTA TANGERANG SELATAN	1.298.504	1.346.102	1.394.405	1.443.403	1.492.999	1.543.209	1.593.812	1.644.899	1.696.308	1.747.906	1.799.605
JUMLAH	10.688.600	10.943.782	11.198.596	11.452.491	11.704.877	11.955.243	12.203.148	12.448.160	12.689.736	12.927.316	13.160.496

Tabel I.2
RASIO JENIS KELAMIN
MENURUT KABUPATEN/KOTA
TAHUN 2010 - 2020

BANTEN

KABUPATEN/KOTA	2010	2011	2012	2013	2014	2015	2016	2017	2018	2019	2020
(1)	(2)	(3)	(4)	(5)	(6)	(7)	(8)	(9)	(10)	(11)	(12)
PANDEGLANG	104,72	104,66	104,62	104,53	104,51	104,43	104,38	104,30	104,23	104,16	104,10
LEBAK	105,43	105,39	105,35	105,28	105,23	105,17	105,10	105,01	104,94	104,88	104,79
TANGERANG	105,10	105,05	104,98	104,96	104,90	104,81	104,75	104,69	104,61	104,53	104,45
SERANG	103,20	103,15	103,09	103,04	102,98	102,93	102,86	102,80	102,72	102,66	102,57
KOTA TANGERANG	104,58	104,54	104,49	104,44	104,36	104,30	104,24	104,17	104,10	104,02	103,94
KOTA CILEGON	104,67	104,64	104,60	104,47	104,39	104,42	104,34	104,28	104,22	104,11	104,05
KOTA SERANG	105,52	105,47	105,45	105,38	105,30	105,24	105,20	105,11	105,09	104,94	104,89
KOTA TANGERANG SELATAN	101,85	101,81	101,76	101,71	101,65	101,60	101,52	101,46	101,39	101,32	101,23
JUMLAH	104,37	104,32	104,26	104,21	104,15	104,08	104,01	103,94	103,87	103,79	103,71

Tabel I.3
RASIO KETERGANTUNGAN
MENURUT KABUPATEN/KOTA
TAHUN 2010 - 2020

BANTEN

KABUPATEN/KOTA	2010	2011	2012	2013	2014	2015	2016	2017	2018	2019	2020
(1)	(2)	(3)	(4)	(5)	(6)	(7)	(8)	(9)	(10)	(11)	(12)
PANDEGLANG	61,29	60,57	59,90	59,30	58,83	58,46	58,15	57,90	57,73	57,59	57,44
LEBAK	57,97	57,29	56,65	56,09	55,64	55,30	55,02	54,79	54,64	54,52	54,40
TANGERANG	47,00	46,58	46,19	45,86	45,61	45,42	45,26	45,13	45,06	45,00	44,91
SERANG	53,75	53,17	52,63	52,16	51,80	51,53	51,31	51,14	51,04	50,96	50,87
KOTA TANGERANG	39,81	39,44	39,09	38,79	38,54	38,34	38,14	37,97	37,84	37,72	37,58
KOTA CILEGON	46,71	46,22	45,75	45,34	45,01	44,75	44,50	44,30	44,15	44,02	43,86
KOTA SERANG	52,05	51,53	51,04	50,62	50,28	50,03	49,80	49,62	49,50	49,38	49,23
KOTA TANGERANG SELATAN	40,79	40,34	39,93	39,57	39,27	39,04	38,83	38,64	38,51	38,39	38,25
JUMLAH	48,62	48,06	47,54	47,08	46,71	46,41	46,14	45,91	45,74	45,59	45,42

Tabel I.4
 PERSENTASE PENDUDUK PERKOTAAN
 MENURUT KABUPATEN/KOTA
 TAHUN 2010 - 2020

BANTEN

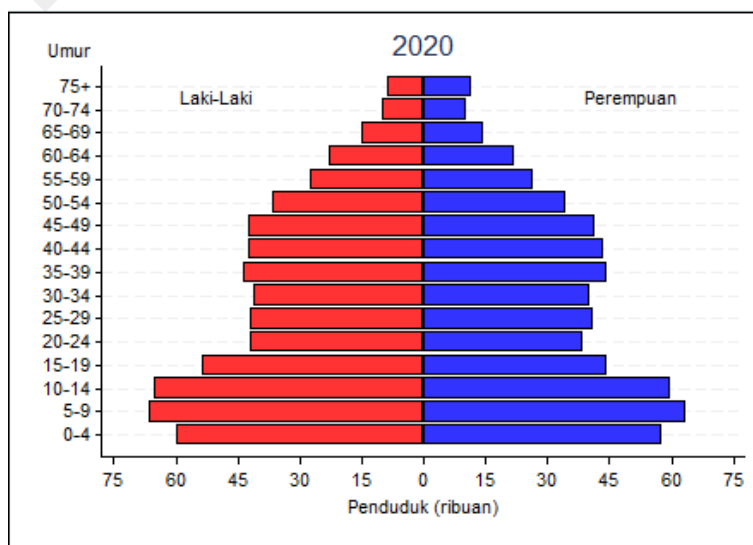
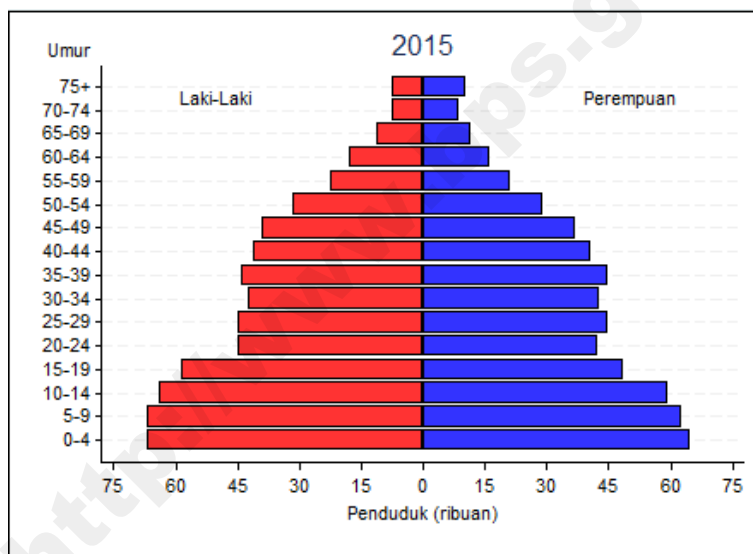
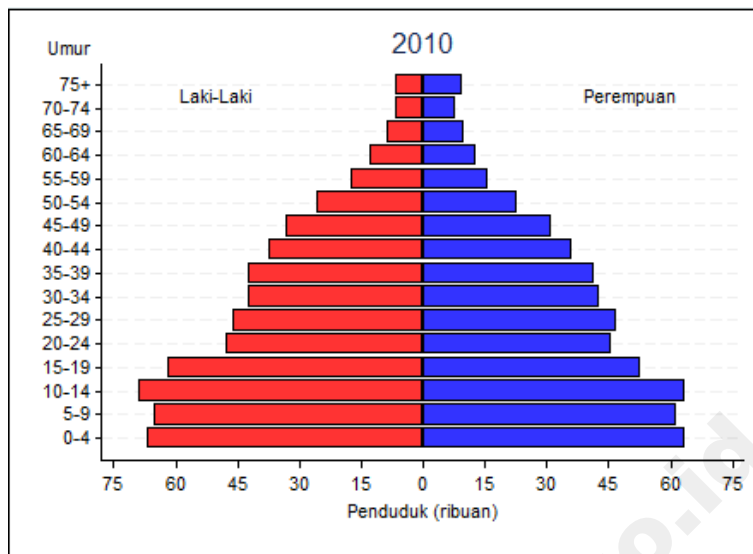
KABUPATEN/KOTA	2010	2011	2012	2013	2014	2015	2016	2017	2018	2019	2020
(1)	(2)	(3)	(4)	(5)	(6)	(7)	(8)	(9)	(10)	(11)	(12)
PANDEGLANG	27,82	27,88	27,94	28,00	28,05	28,11	28,30	28,49	28,68	28,86	29,05
LEBAK	13,84	13,87	13,90	13,92	13,95	13,98	14,07	14,17	14,26	14,36	14,45
TANGERANG	82,00	82,17	82,34	82,51	82,68	82,85	83,40	83,96	84,51	85,06	85,61
SERANG	31,07	31,14	31,20	31,26	31,33	31,39	31,60	31,81	32,02	32,23	32,44
KOTA TANGERANG	100,00	100,00	100,00	100,00	100,00	100,00	100,00	100,00	100,00	100,00	100,00
KOTA CILEGON	96,15	96,35	96,54	96,74	96,95	97,14	97,70	98,26	98,81	99,37	99,93
KOTA SERANG	74,16	74,31	74,47	74,62	74,77	74,93	75,43	75,93	76,42	76,93	77,42
KOTA TANGERANG SELATAN	100,00	100,00	100,00	100,00	100,00	100,00	100,00	100,00	100,00	100,00	100,00
JUMLAH	67,01	67,14	67,28	67,42	67,56	67,70	68,15	68,60	69,05	69,50	69,95

Tabel I.5
 PERSENTASE PENDUDUK LANSIA
 MENURUT KABUPATEN/KOTA
 TAHUN 2010 - 2020

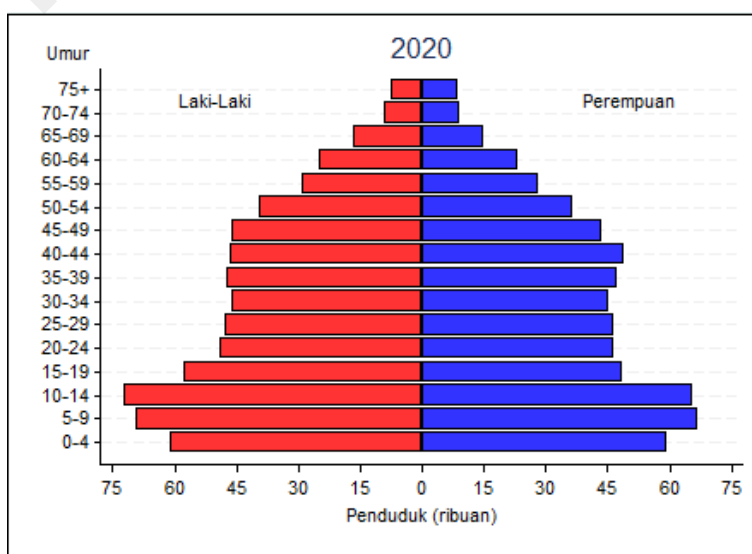
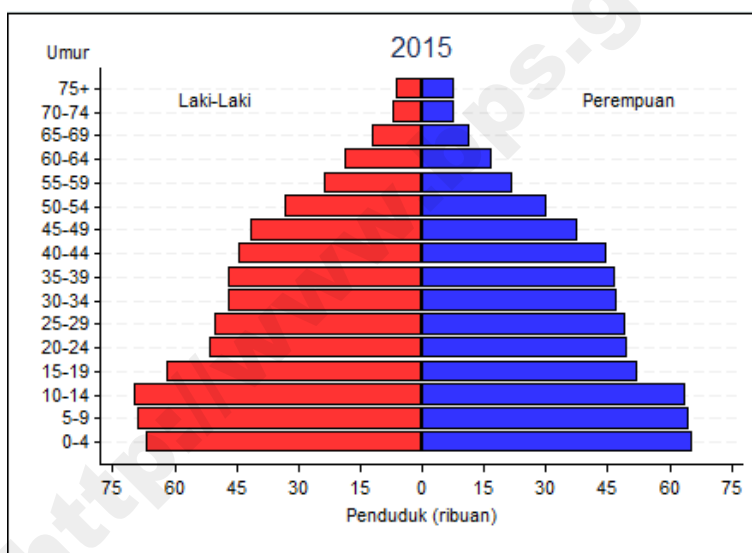
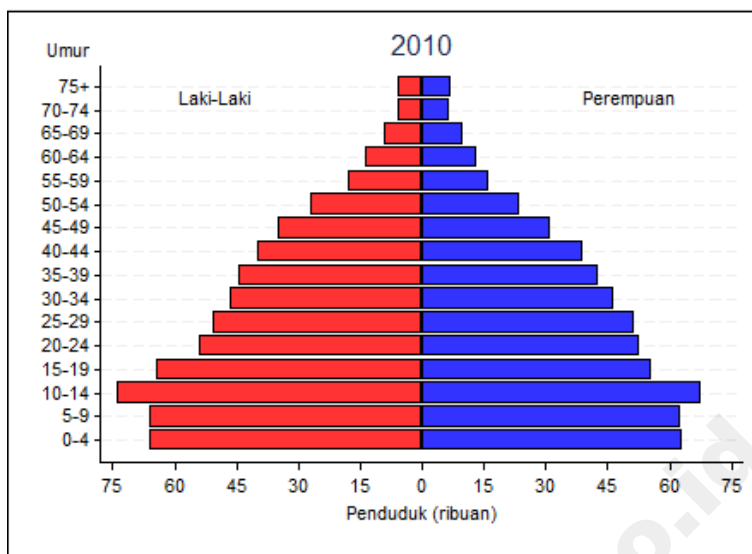
BANTEN

KABUPATEN/KOTA	2010	2011	2012	2013	2014	2015	2016	2017	2018	2019	2020
(1)	(2)	(3)	(4)	(5)	(6)	(7)	(8)	(9)	(10)	(11)	(12)
PANDEGLANG	6,55	6,70	6,88	7,10	7,34	7,63	7,94	8,29	8,67	9,07	9,50
LEBAK	5,89	6,04	6,22	6,42	6,66	6,94	7,23	7,56	7,92	8,30	8,71
TANGERANG	3,91	4,01	4,14	4,28	4,45	4,65	4,86	5,09	5,35	5,63	5,92
SERANG	5,24	5,39	5,55	5,74	5,97	6,22	6,50	6,81	7,14	7,50	7,87
KOTA TANGERANG	3,53	3,62	3,73	3,86	4,01	4,19	4,38	4,59	4,83	5,07	5,33
KOTA CILEGON	3,95	4,05	4,17	4,32	4,49	4,68	4,90	5,13	5,39	5,67	5,96
KOTA SERANG	3,74	3,85	3,97	4,11	4,28	4,47	4,67	4,90	5,15	5,42	5,70
KOTA TANGERANG SELATAN	4,15	4,25	4,37	4,51	4,68	4,88	5,09	5,33	5,59	5,87	6,16
JUMLAH	4,55	4,66	4,79	4,94	5,12	5,32	5,55	5,80	6,07	6,37	6,67

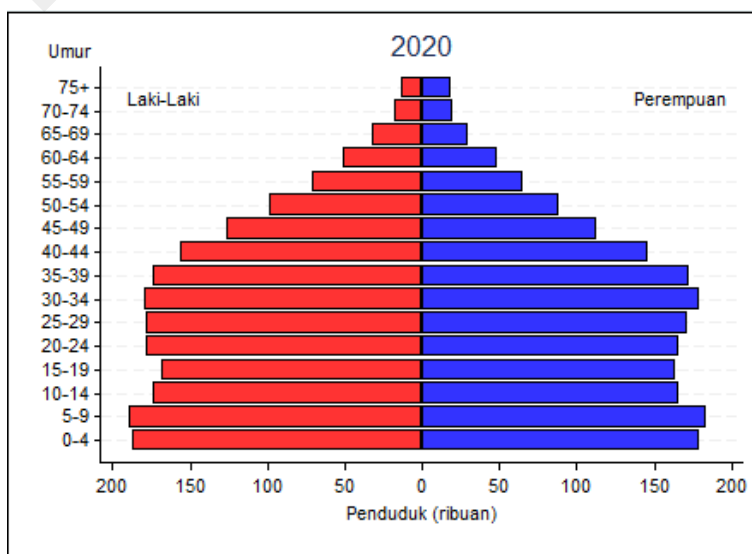
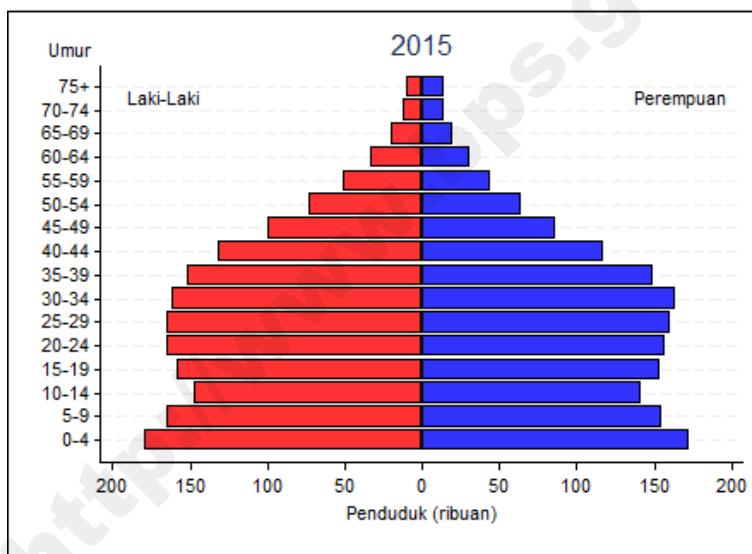
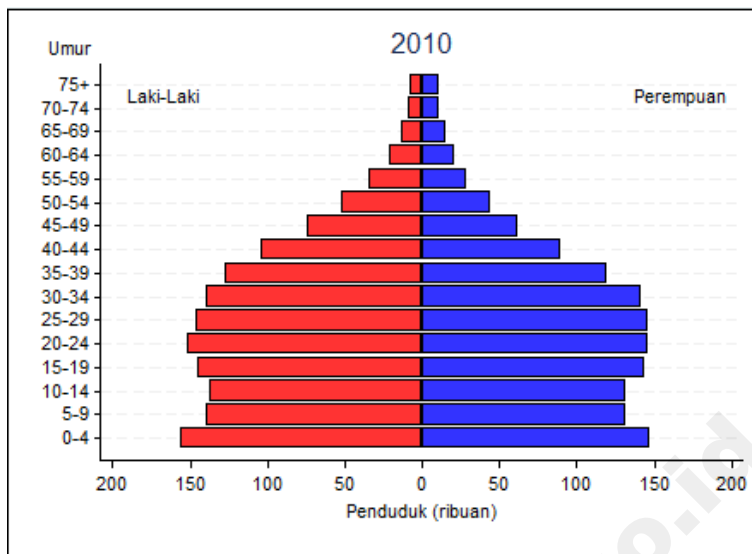
Gambar I.1
 PIRAMIDA PENDUDUK PANDEGLANG
 TAHUN 2010 – 2020



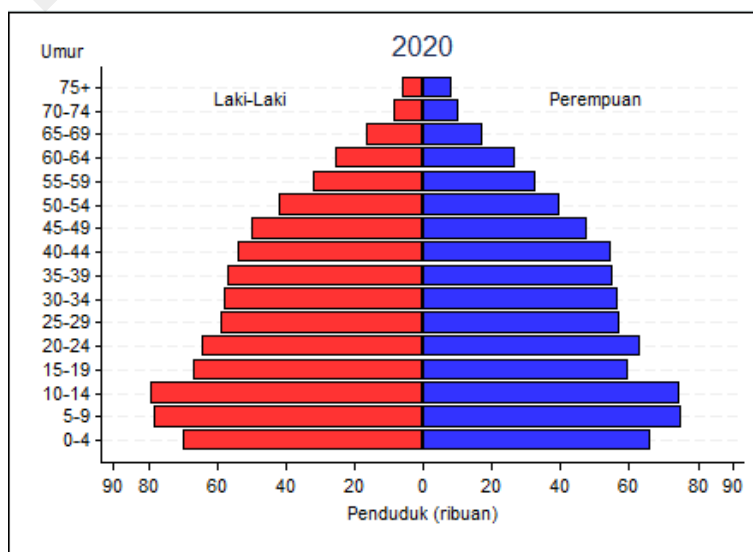
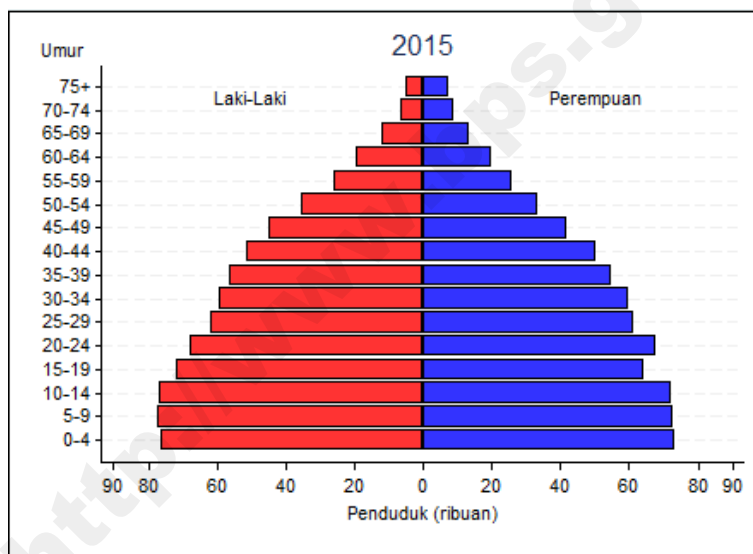
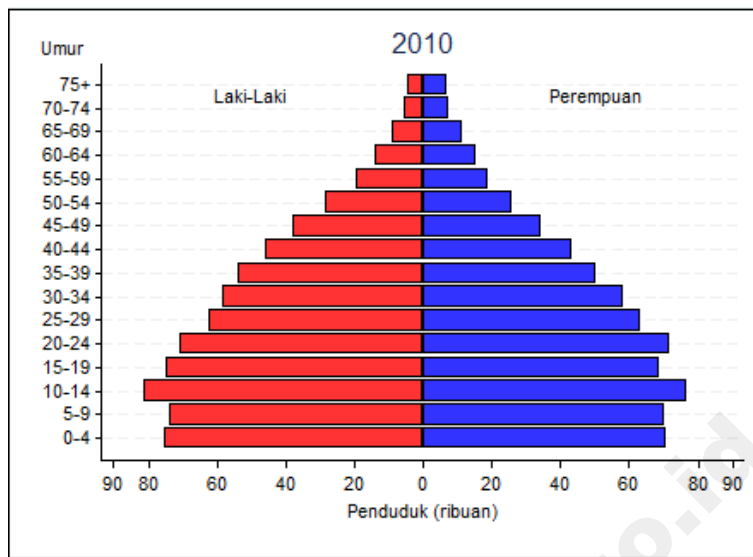
Gambar I.2
 PIRAMIDA PENDUDUK LEBAK
 TAHUN 2010 – 2020



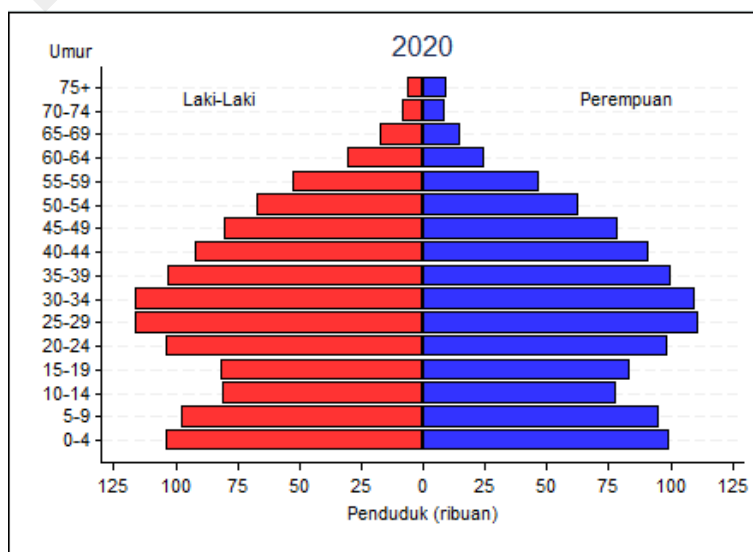
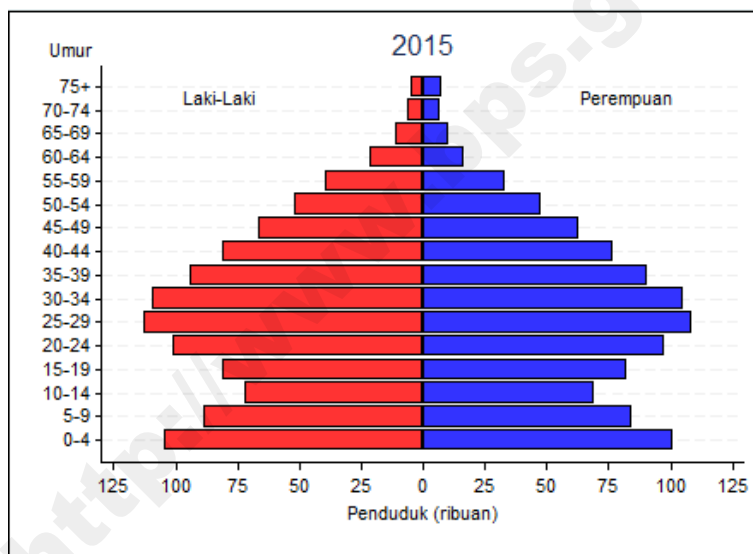
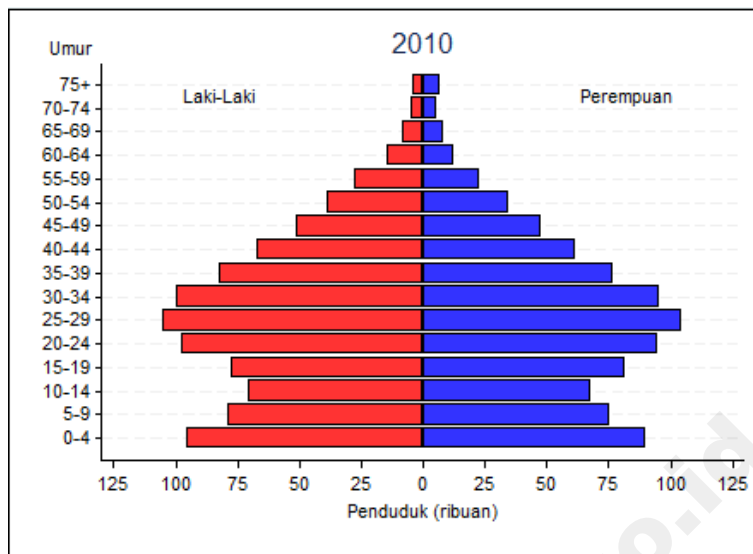
Gambar I.3
 PIRAMIDA PENDUDUK TANGERANG
 TAHUN 2010 – 2020



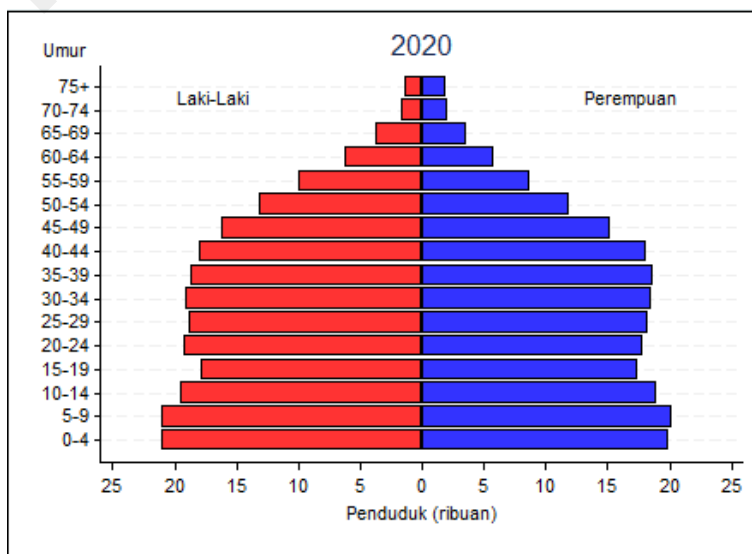
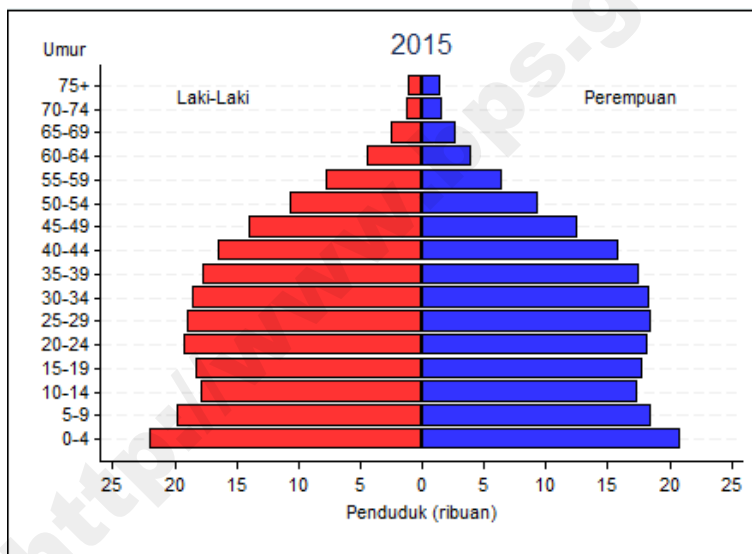
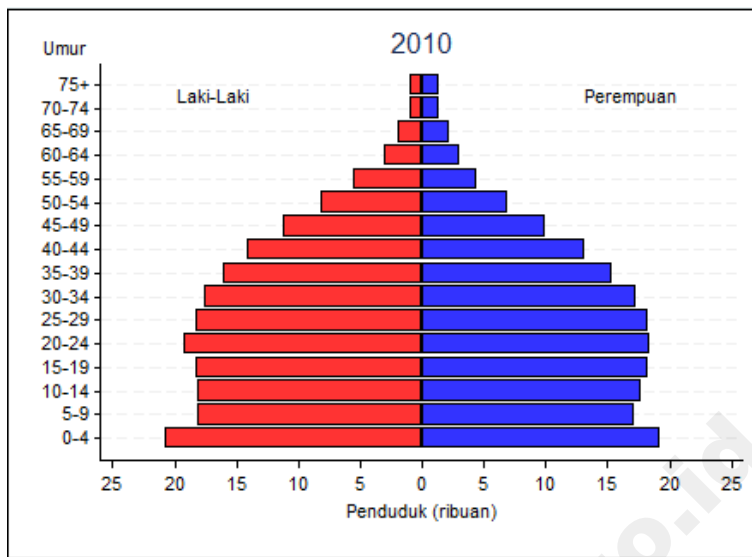
Gambar I.4
 PIRAMIDA PENDUDUK SERANG
 TAHUN 2010 – 2020



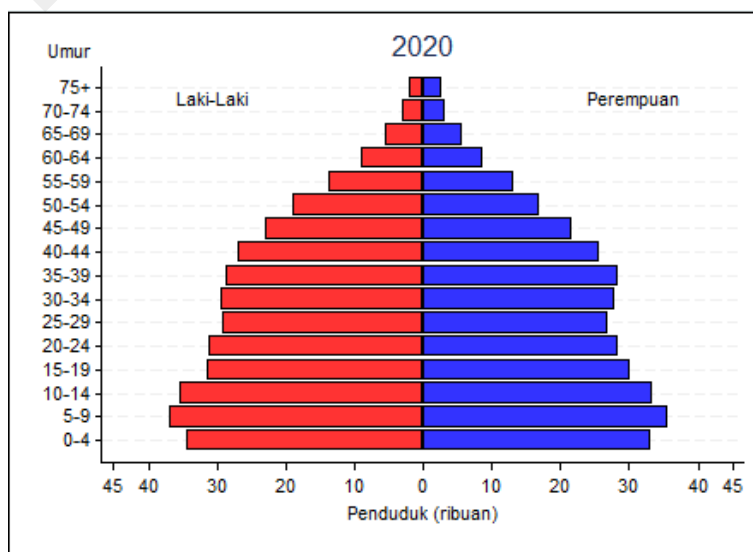
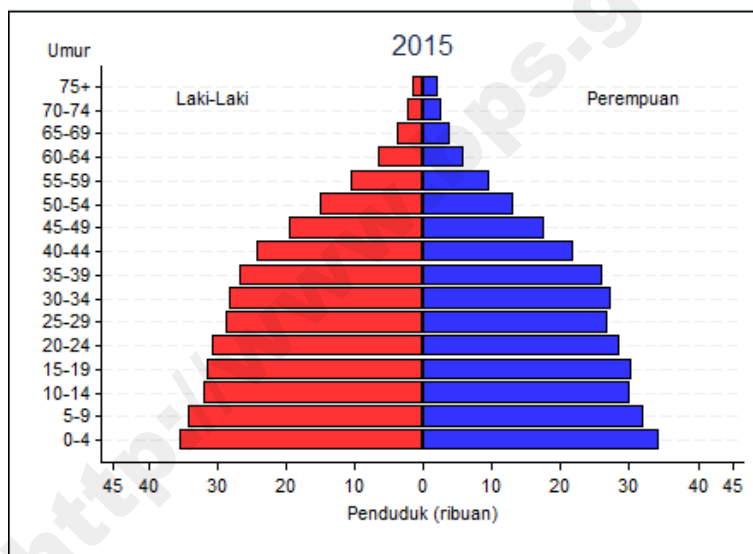
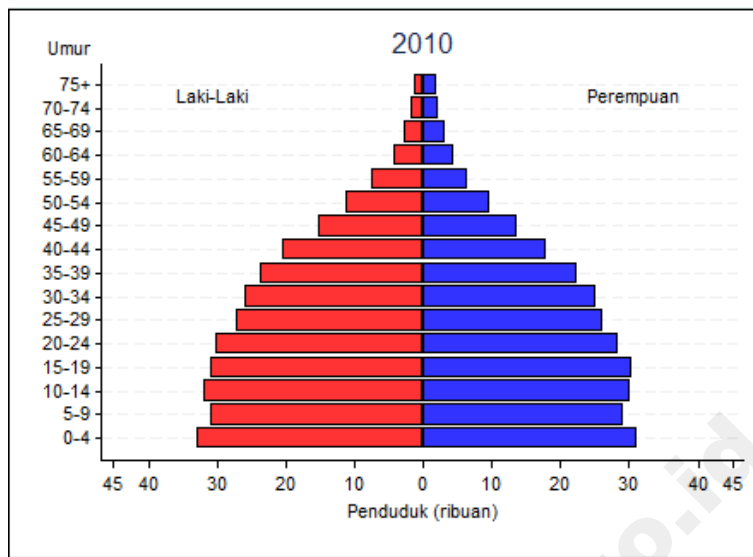
Gambar I.5
 PIRAMIDA PENDUDUK KOTA TANGERANG
 TAHUN 2010 – 2020



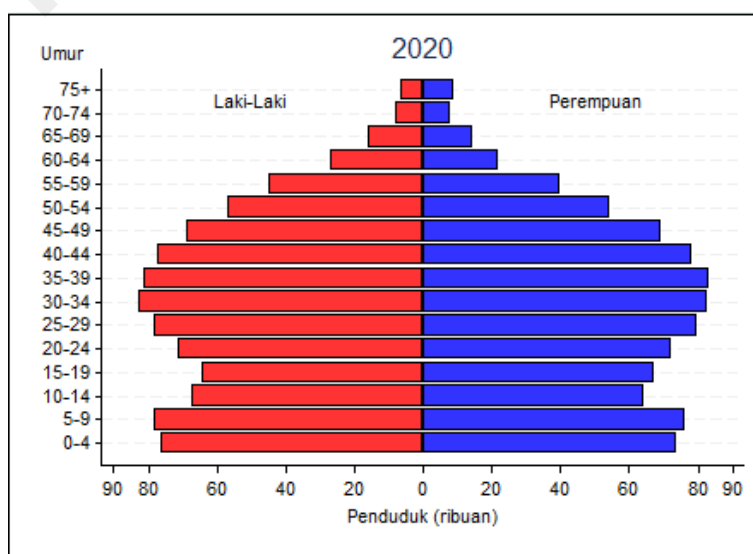
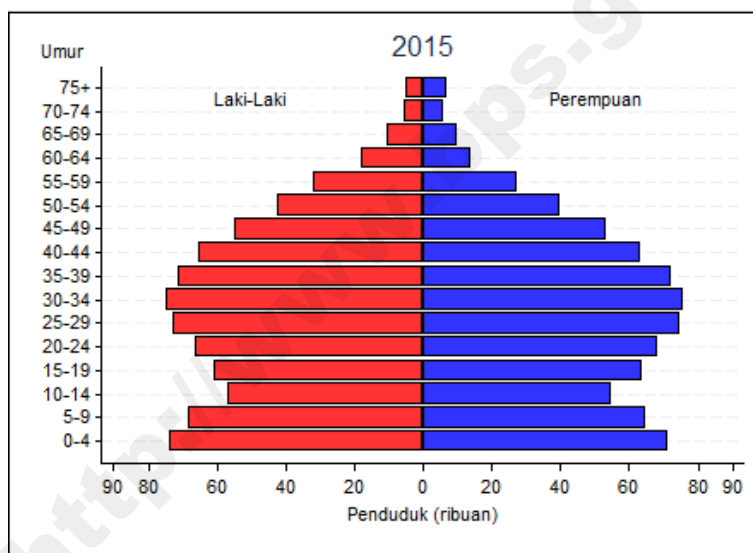
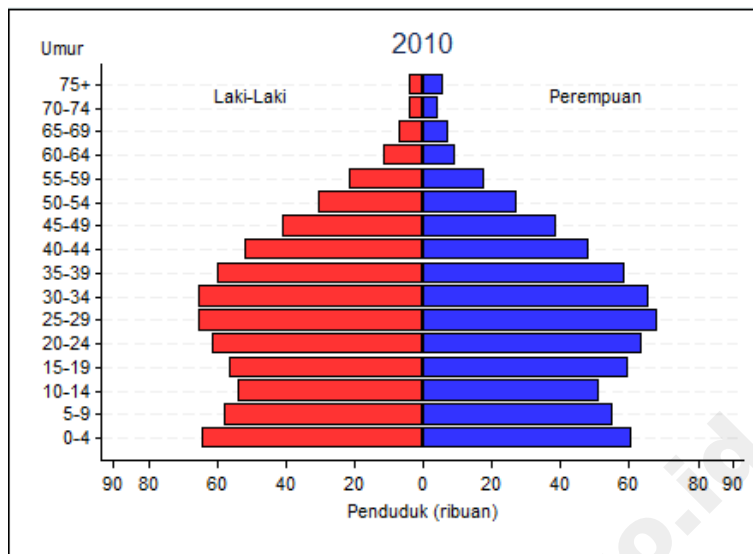
Gambar I.6
 PIRAMIDA PENDUDUK KOTA CILEGON
 TAHUN 2010 – 2020



Gambar I.7
 PIRAMIDA PENDUDUK KOTA SERANG
 TAHUN 2010 – 2020



Gambar 1.8
 PIRAMIDA PENDUDUK KOTA TANGERANG SELATAN
 TAHUN 2010 – 2020



Tabel II.1.1
 PROYEKSI PENDUDUK
 MENURUT JENIS KELAMIN DAN KELOMPOK UMUR
 TAHUN 2010 - 2020

PANDEGLANG

LAKI-LAKI

KELOMPOK UMUR	2010	2011	2012	2013	2014	2015	2016	2017	2018	2019	2020
(1)	(2)	(3)	(4)	(5)	(6)	(7)	(8)	(9)	(10)	(11)	(12)
0-4	66.804	67.562	67.963	68.069	67.623	66.705	65.461	64.140	62.754	61.321	59.853
5-9	65.166	64.902	64.973	65.514	66.022	66.844	67.542	67.870	67.813	67.416	66.468
10-14	68.807	67.796	66.654	65.540	64.456	63.839	63.514	63.510	63.879	64.411	65.175
15-19	61.770	61.121	60.599	60.122	59.318	58.427	57.426	56.308	55.149	54.184	53.552
20-24	47.682	47.352	46.895	46.391	45.674	44.975	44.388	43.889	43.368	42.744	42.007
25-29	46.113	46.040	45.835	45.612	45.254	44.934	44.527	44.001	43.379	42.696	41.981
30-34	42.494	42.544	42.641	42.732	42.653	42.470	42.306	42.017	41.655	41.305	40.940
35-39	42.330	42.860	43.236	43.606	43.702	43.906	43.878	43.894	43.841	43.755	43.510
40-44	37.563	38.523	39.391	40.195	40.742	41.195	41.644	41.934	42.160	42.255	42.404
45-49	33.205	34.373	35.584	36.838	37.917	38.930	39.885	40.734	41.458	42.049	42.492
50-54	25.906	27.076	28.187	29.312	30.372	31.523	32.592	33.691	34.781	35.808	36.733
55-59	17.407	18.495	19.583	20.672	21.666	22.638	23.629	24.564	25.473	26.402	27.375
60-64	13.043	13.766	14.650	15.662	16.666	17.683	18.793	19.896	20.976	22.018	23.016
65-69	8.722	9.096	9.479	9.935	10.481	11.198	11.821	12.576	13.423	14.301	15.177
70-74	6.609	6.806	7.010	7.225	7.417	7.613	7.953	8.297	8.690	9.190	9.825
75+	6.778	6.889	7.019	7.178	7.341	7.532	7.749	7.976	8.213	8.449	8.692
JUMLAH	590.399	595.201	599.699	604.603	607.304	610.412	613.108	615.297	617.012	618.304	619.200

Tabel II.1.2
 PROYEKSI PENDUDUK
 MENURUT JENIS KELAMIN DAN KELOMPOK UMUR
 TAHUN 2010 - 2020

PANDEGLANG

PEREMPUAN

KELOMPOK UMUR	2010	2011	2012	2013	2014	2015	2016	2017	2018	2019	2020
(1)	(2)	(3)	(4)	(5)	(6)	(7)	(8)	(9)	(10)	(11)	(12)
0-4	63.288	64.343	64.961	65.400	65.196	64.606	63.337	62.006	60.617	59.179	57.710
5-9	61.308	61.047	61.115	61.520	61.892	62.544	63.499	64.032	64.273	64.116	63.480
10-14	63.647	62.618	61.596	60.703	59.749	59.171	58.826	58.808	59.016	59.405	59.964
15-19	52.882	52.033	51.227	50.509	49.554	48.651	47.698	46.766	45.855	45.070	44.496
20-24	45.545	45.105	44.575	43.995	43.180	42.377	41.617	40.905	40.186	39.437	38.654
25-29	47.001	46.707	46.219	45.759	45.120	44.658	44.117	43.500	42.759	41.961	41.108
30-34	42.605	42.862	43.078	43.246	43.079	42.736	42.356	41.805	41.212	40.617	40.122
35-39	41.544	42.378	43.073	43.771	44.220	44.711	44.888	45.030	45.044	44.878	44.458
40-44	35.942	37.061	38.134	39.213	40.044	40.817	41.572	42.193	42.742	43.204	43.639
45-49	30.952	32.151	33.350	34.600	35.700	36.827	37.916	38.963	39.943	40.818	41.565
50-54	22.924	24.248	25.486	26.711	27.823	28.998	30.074	31.151	32.216	33.257	34.269
55-59	15.778	16.715	17.811	19.032	20.169	21.260	22.454	23.564	24.622	25.656	26.711
60-64	12.943	13.451	13.987	14.629	15.384	16.367	17.334	18.473	19.701	20.917	22.049
65-69	9.923	10.115	10.412	10.792	11.178	11.596	12.047	12.521	13.068	13.761	14.634
70-74	7.925	8.199	8.405	8.585	8.726	8.900	9.082	9.352	9.682	10.039	10.410
75+	9.601	9.671	9.778	9.938	10.087	10.280	10.587	10.837	11.063	11.290	11.538
JUMLAH	563.808	568.704	573.207	578.403	581.101	584.499	587.404	589.906	591.999	593.605	594.807

Tabel II.1.3
 PROYEKSI PENDUDUK
 MENURUT JENIS KELAMIN DAN KELOMPOK UMUR
 TAHUN 2010 - 2020

PANDEGLANG

LAKI-LAKI + PEREMPUAN

KELOMPOK UMUR	2010	2011	2012	2013	2014	2015	2016	2017	2018	2019	2020
(1)	(2)	(3)	(4)	(5)	(6)	(7)	(8)	(9)	(10)	(11)	(12)
0-4	130.092	131.905	132.924	133.469	132.819	131.311	128.798	126.146	123.371	120.500	117.563
5-9	126.474	125.949	126.088	127.034	127.914	129.388	131.041	131.902	132.086	131.532	129.948
10-14	132.454	130.414	128.250	126.243	124.205	123.010	122.340	122.318	122.895	123.816	125.139
15-19	114.652	113.154	111.826	110.631	108.872	107.078	105.124	103.074	101.004	99.254	98.048
20-24	93.227	92.457	91.470	90.386	88.854	87.352	86.005	84.794	83.554	82.181	80.661
25-29	93.114	92.747	92.054	91.371	90.374	89.592	88.644	87.501	86.138	84.657	83.089
30-34	85.099	85.406	85.719	85.978	85.732	85.206	84.662	83.822	82.867	81.922	81.062
35-39	83.874	85.238	86.309	87.377	87.922	88.617	88.766	88.924	88.885	88.633	87.968
40-44	73.505	75.584	77.525	79.408	80.786	82.012	83.216	84.127	84.902	85.459	86.043
45-49	64.157	66.524	68.934	71.438	73.617	75.757	77.801	79.697	81.401	82.867	84.057
50-54	48.830	51.324	53.673	56.023	58.195	60.521	62.666	64.842	66.997	69.065	71.002
55-59	33.185	35.210	37.394	39.704	41.835	43.898	46.083	48.128	50.095	52.058	54.086
60-64	25.986	27.217	28.637	30.291	32.050	34.050	36.127	38.369	40.677	42.935	45.065
65-69	18.645	19.211	19.891	20.727	21.659	22.794	23.868	25.097	26.491	28.062	29.811
70-74	14.534	15.005	15.415	15.810	16.143	16.513	17.035	17.649	18.372	19.229	20.235
75+	16.379	16.560	16.797	17.116	17.428	17.812	18.336	18.813	19.276	19.739	20.230
JUMLAH	1.154.207	1.163.905	1.172.906	1.183.006	1.188.405	1.194.911	1.200.512	1.205.203	1.209.011	1.211.909	1.214.007

Tabel II.2.1
PROYEKSI PENDUDUK
MENURUT JENIS KELAMIN DAN KELOMPOK UMUR
TAHUN 2010 - 2020

LEBAK

LAKI-LAKI

KELOMPOK UMUR	2010	2011	2012	2013	2014	2015	2016	2017	2018	2019	2020
(1)	(2)	(3)	(4)	(5)	(6)	(7)	(8)	(9)	(10)	(11)	(12)
0-4	66.119	67.085	67.690	67.904	67.776	67.070	66.018	64.882	63.672	62.408	61.085
5-9	66.100	66.045	66.321	66.978	67.815	68.880	69.810	70.358	70.515	70.315	69.522
10-14	73.991	73.137	72.126	71.034	70.187	69.738	69.593	69.798	70.418	71.220	72.268
15-19	64.491	64.021	63.668	63.269	62.717	61.970	61.093	60.085	59.025	58.171	57.652
20-24	53.925	53.726	53.369	52.879	52.308	51.670	51.152	50.729	50.279	49.707	48.988
25-29	50.828	50.912	50.841	50.673	50.513	50.314	50.011	49.570	49.014	48.392	47.715
30-34	46.396	46.600	46.850	47.023	47.157	47.106	47.065	46.883	46.620	46.370	46.092
35-39	44.537	45.241	45.776	46.242	46.563	46.929	47.040	47.198	47.285	47.337	47.206
40-44	40.086	41.245	42.303	43.235	44.030	44.663	45.284	45.737	46.124	46.368	46.664
45-49	34.949	36.296	37.690	39.080	40.413	41.628	42.777	43.819	44.733	45.510	46.119
50-54	26.871	28.176	29.422	30.644	31.903	33.218	34.448	35.717	36.984	38.193	39.291
55-59	17.823	18.999	20.176	21.333	22.464	23.546	24.652	25.705	26.737	27.796	28.903
60-64	13.678	14.484	15.460	16.554	17.700	18.841	20.081	21.325	22.551	23.745	24.889
65-69	9.193	9.617	10.055	10.553	11.188	11.990	12.695	13.549	14.503	15.500	16.494
70-74	5.974	6.172	6.377	6.584	6.790	6.992	7.326	7.665	8.054	8.542	9.159
75+	5.637	5.744	5.874	6.017	6.179	6.357	6.562	6.776	6.997	7.228	7.451
JUMLAH	620.598	627.500	633.998	640.002	645.703	650.912	655.607	659.796	663.511	666.802	669.498

Tabel II.2.2
 PROYEKSI PENDUDUK
 MENURUT JENIS KELAMIN DAN KELOMPOK UMUR
 TAHUN 2010 - 2020

LEBAK

PEREMPUAN

KELOMPOK UMUR	2010	2011	2012	2013	2014	2015	2016	2017	2018	2019	2020
(1)	(2)	(3)	(4)	(5)	(6)	(7)	(8)	(9)	(10)	(11)	(12)
0-4	63.110	64.372	65.206	65.746	65.884	65.503	64.442	63.306	62.095	60.828	59.521
5-9	62.489	62.427	62.703	63.221	63.936	64.823	66.043	66.833	67.303	67.369	66.926
10-14	67.475	66.605	65.734	64.885	64.200	63.790	63.640	63.845	64.282	64.927	65.760
15-19	55.682	54.969	54.300	53.622	52.888	52.100	51.259	50.434	49.621	48.936	48.481
20-24	52.764	52.426	51.985	51.389	50.702	49.930	49.208	48.535	47.849	47.119	46.342
25-29	51.294	51.139	50.770	50.343	49.896	49.551	49.122	48.600	47.935	47.197	46.394
30-34	46.355	46.789	47.181	47.440	47.503	47.277	47.023	46.574	46.067	45.556	45.148
35-39	42.757	43.764	44.634	45.430	46.140	46.812	47.163	47.480	47.652	47.635	47.345
40-44	38.855	40.193	41.492	42.729	43.863	44.854	45.841	46.686	47.448	48.122	48.767
45-49	31.249	32.568	33.896	35.223	36.537	37.816	39.077	40.301	41.462	42.518	43.451
50-54	23.689	25.140	26.510	27.830	29.141	30.472	31.715	32.965	34.206	35.433	36.633
55-59	16.117	17.130	18.316	19.602	20.882	22.085	23.406	24.651	25.841	27.019	28.225
60-64	13.131	13.688	14.275	14.950	15.798	16.863	17.924	19.169	20.517	21.861	23.126
65-69	9.815	10.033	10.353	10.749	11.180	11.627	12.114	12.624	13.213	13.952	14.891
70-74	6.710	6.967	7.163	7.325	7.481	7.656	7.833	8.092	8.401	8.737	9.080
75+	7.117	7.195	7.290	7.420	7.571	7.741	7.995	8.212	8.407	8.597	8.818
JUMLAH	588.609	595.405	601.808	607.904	613.602	618.900	623.805	628.307	632.299	635.806	638.908

Tabel II.2.3
 PROYEKSI PENDUDUK
 MENURUT JENIS KELAMIN DAN KELOMPOK UMUR
 TAHUN 2010 - 2020

LEBAK

LAKI-LAKI + PEREMPUAN

KELOMPOK UMUR	2010	2011	2012	2013	2014	2015	2016	2017	2018	2019	2020
(1)	(2)	(3)	(4)	(5)	(6)	(7)	(8)	(9)	(10)	(11)	(12)
0-4	129.229	131.457	132.896	133.650	133.660	132.573	130.460	128.188	125.767	123.236	120.606
5-9	128.589	128.472	129.024	130.199	131.751	133.703	135.853	137.191	137.818	137.684	136.448
10-14	141.466	139.742	137.860	135.919	134.387	133.528	133.233	133.643	134.700	136.147	138.028
15-19	120.173	118.990	117.968	116.891	115.605	114.070	112.352	110.519	108.646	107.107	106.133
20-24	106.689	106.152	105.354	104.268	103.010	101.600	100.360	99.264	98.128	96.826	95.330
25-29	102.122	102.051	101.611	101.016	100.409	99.865	99.133	98.170	96.949	95.589	94.109
30-34	92.751	93.389	94.031	94.463	94.660	94.383	94.088	93.457	92.687	91.926	91.240
35-39	87.294	89.005	90.410	91.672	92.703	93.741	94.203	94.678	94.937	94.972	94.551
40-44	78.941	81.438	83.795	85.964	87.893	89.517	91.125	92.423	93.572	94.490	95.431
45-49	66.198	68.864	71.586	74.303	76.950	79.444	81.854	84.120	86.195	88.028	89.570
50-54	50.560	53.316	55.932	58.474	61.044	63.690	66.163	68.682	71.190	73.626	75.924
55-59	33.940	36.129	38.492	40.935	43.346	45.631	48.058	50.356	52.578	54.815	57.128
60-64	26.809	28.172	29.735	31.504	33.498	35.704	38.005	40.494	43.068	45.606	48.015
65-69	19.008	19.650	20.408	21.302	22.368	23.617	24.809	26.173	27.716	29.452	31.385
70-74	12.684	13.139	13.540	13.909	14.271	14.648	15.159	15.757	16.455	17.279	18.239
75+	12.754	12.939	13.164	13.437	13.750	14.098	14.557	14.988	15.404	15.825	16.269
JUMLAH	1.209.207	1.222.905	1.235.806	1.247.906	1.259.305	1.269.812	1.279.412	1.288.103	1.295.810	1.302.608	1.308.406

Tabel II.3.1
PROYEKSI PENDUDUK
MENURUT JENIS KELAMIN DAN KELOMPOK UMUR
TAHUN 2010 - 2020

TANGERANG

LAKI-LAKI

KELOMPOK UMUR	2010	2011	2012	2013	2014	2015	2016	2017	2018	2019	2020
(1)	(2)	(3)	(4)	(5)	(6)	(7)	(8)	(9)	(10)	(11)	(12)
0-4	156.513	162.728	168.311	173.082	177.296	179.995	181.846	183.461	184.850	186.028	186.993
5-9	139.301	142.623	146.810	151.990	157.931	164.568	171.189	177.124	182.253	186.601	189.470
10-14	137.522	139.295	140.811	142.162	144.161	146.949	150.513	154.968	160.519	166.691	173.700
15-19	145.558	148.065	150.941	153.759	156.419	158.566	160.446	161.991	163.384	165.324	168.272
20-24	151.817	154.989	157.822	160.300	162.732	164.921	167.573	170.600	173.597	176.217	178.348
25-29	146.585	150.450	154.006	157.354	160.976	164.501	167.825	170.757	173.359	175.736	177.951
30-34	140.053	144.143	148.549	152.843	157.305	161.211	165.323	169.053	172.596	176.264	179.925
35-39	127.050	132.242	137.167	142.041	146.778	151.777	156.147	160.834	165.432	170.041	174.141
40-44	104.027	109.677	115.312	120.811	126.265	131.400	136.742	141.779	146.801	151.524	156.600
45-49	74.252	79.019	84.112	89.401	94.879	100.265	105.750	111.203	116.556	121.754	126.708
50-54	52.380	56.278	60.242	64.321	68.722	73.410	78.134	83.167	88.416	93.749	99.043
55-59	33.982	37.117	40.403	43.795	47.323	50.892	54.690	58.535	62.515	66.727	71.257
60-64	21.602	23.439	25.647	28.145	30.885	33.729	36.902	40.224	43.674	47.215	50.825
65-69	13.744	14.738	15.796	16.991	18.485	20.324	22.090	24.200	26.594	29.185	31.893
70-74	9.062	9.596	10.160	10.754	11.380	12.019	12.928	13.891	14.983	16.316	17.962
75+	8.130	8.484	8.890	9.341	9.853	10.388	11.004	11.683	12.386	13.118	13.889
JUMLAH	1.461.578	1.512.883	1.564.979	1.617.090	1.671.390	1.724.915	1.779.102	1.833.470	1.887.915	1.942.490	1.996.977

Tabel II.3.2
 PROYEKSI PENDUDUK
 MENURUT JENIS KELAMIN DAN KELOMPOK UMUR
 TAHUN 2010 - 2020

TANGERANG

PEREMPUAN

KELOMPOK UMUR	2010	2011	2012	2013	2014	2015	2016	2017	2018	2019	2020
(1)	(2)	(3)	(4)	(5)	(6)	(7)	(8)	(9)	(10)	(11)	(12)
0-4	146.641	153.353	159.341	164.703	169.488	172.996	174.751	176.294	177.644	178.774	179.705
5-9	131.866	135.057	139.142	143.814	149.349	155.448	162.617	168.973	174.822	179.777	183.462
10-14	131.519	133.098	134.742	136.329	138.506	141.282	144.732	149.093	154.226	160.035	166.528
15-19	144.328	146.133	148.133	150.024	152.004	153.744	155.349	156.944	158.615	160.702	163.548
20-24	145.943	148.672	151.204	153.223	155.228	156.917	158.794	160.833	162.892	164.785	166.489
25-29	145.900	149.129	151.855	154.351	157.085	160.135	162.998	165.613	167.798	169.731	171.393
30-34	141.710	146.638	151.665	156.325	160.731	164.219	167.715	170.598	173.354	176.127	179.320
35-39	120.012	125.950	131.760	137.492	143.396	149.345	154.515	159.736	164.695	169.145	172.698
40-44	89.102	94.532	100.149	105.777	111.555	117.172	123.025	128.731	134.465	140.183	146.001
45-49	62.369	66.654	71.163	75.813	80.763	85.828	91.087	96.495	102.008	107.500	112.882
50-54	43.751	47.624	51.528	55.462	59.642	64.033	68.439	73.056	77.888	82.896	88.055
55-59	28.500	31.053	34.070	37.394	40.932	44.452	48.395	52.361	56.406	60.610	65.053
60-64	21.399	22.879	24.478	26.298	28.536	31.269	34.126	37.477	41.198	45.089	48.991
65-69	15.081	15.806	16.731	17.813	19.034	20.327	21.750	23.284	25.045	27.173	29.795
70-74	11.040	11.745	12.390	12.994	13.636	14.329	15.064	15.980	17.055	18.236	19.500
75+	11.443	11.871	12.351	12.878	13.501	14.183	15.036	15.832	16.667	17.534	18.483
JUMLAH	1.390.604	1.440.194	1.490.702	1.540.690	1.593.386	1.645.679	1.698.393	1.751.300	1.804.778	1.858.297	1.911.903

Tabel II.3.3
PROYEKSI PENDUDUK
MENURUT JENIS KELAMIN DAN KELOMPOK UMUR
TAHUN 2010 - 2020

TANGERANG

LAKI-LAKI + PEREMPUAN

KELOMPOK UMUR	2010	2011	2012	2013	2014	2015	2016	2017	2018	2019	2020
(1)	(2)	(3)	(4)	(5)	(6)	(7)	(8)	(9)	(10)	(11)	(12)
0-4	303.154	316.081	327.652	337.785	346.784	352.991	356.597	359.755	362.494	364.802	366.698
5-9	271.167	277.680	285.952	295.804	307.280	320.016	333.806	346.097	357.075	366.378	372.932
10-14	269.041	272.393	275.553	278.491	282.667	288.231	295.245	304.061	314.745	326.726	340.228
15-19	289.886	294.198	299.074	303.783	308.423	312.310	315.795	318.935	321.999	326.026	331.820
20-24	297.760	303.661	309.026	313.523	317.960	321.838	326.367	331.433	336.489	341.002	344.837
25-29	292.485	299.579	305.861	311.705	318.061	324.636	330.823	336.370	341.157	345.467	349.344
30-34	281.763	290.781	300.214	309.168	318.036	325.430	333.038	339.651	345.950	352.391	359.245
35-39	247.062	258.192	268.927	279.533	290.174	301.122	310.662	320.570	330.127	339.186	346.839
40-44	193.129	204.209	215.461	226.588	237.820	248.572	259.767	270.510	281.266	291.707	302.601
45-49	136.621	145.673	155.275	165.214	175.642	186.093	196.837	207.698	218.564	229.254	239.590
50-54	96.131	103.902	111.770	119.783	128.364	137.443	146.573	156.223	166.304	176.645	187.098
55-59	62.482	68.170	74.473	81.189	88.255	95.344	103.085	110.896	118.921	127.337	136.310
60-64	43.001	46.318	50.125	54.443	59.421	64.998	71.028	77.701	84.872	92.304	99.816
65-69	28.825	30.544	32.527	34.804	37.519	40.651	43.840	47.484	51.639	56.358	61.688
70-74	20.102	21.341	22.550	23.748	25.016	26.348	27.992	29.871	32.038	34.552	37.462
75+	19.573	20.355	21.241	22.219	23.354	24.571	26.040	27.515	29.053	30.652	32.372
JUMLAH	2.852.182	2.953.077	3.055.681	3.157.780	3.264.776	3.370.594	3.477.495	3.584.770	3.692.693	3.800.787	3.908.880

Tabel II.4.1
PROYEKSI PENDUDUK
MENURUT JENIS KELAMIN DAN KELOMPOK UMUR
TAHUN 2010 - 2020

SERANG

LAKI-LAKI

KELOMPOK UMUR	2010	2011	2012	2013	2014	2015	2016	2017	2018	2019	2020
(1)	(2)	(3)	(4)	(5)	(6)	(7)	(8)	(9)	(10)	(11)	(12)
0-4	75.254	76.346	77.027	77.290	77.157	76.380	75.208	73.950	72.600	71.197	69.717
5-9	74.004	73.933	74.236	74.994	75.941	77.159	78.228	78.885	79.090	78.909	78.051
10-14	81.140	80.194	79.080	77.901	76.985	76.519	76.386	76.649	77.364	78.285	79.470
15-19	74.731	74.176	73.761	73.318	72.689	71.849	70.857	69.723	68.521	67.565	66.992
20-24	70.829	70.559	70.085	69.460	68.718	67.906	67.249	66.724	66.158	65.441	64.519
25-29	62.373	62.466	62.375	62.185	61.998	61.775	61.425	60.912	60.254	59.523	58.714
30-34	58.247	58.495	58.804	59.037	59.215	59.171	59.140	58.942	58.634	58.352	58.024
35-39	53.624	54.464	55.105	55.679	56.072	56.535	56.689	56.908	57.036	57.129	56.994
40-44	46.096	47.421	48.636	49.717	50.641	51.386	52.118	52.666	53.135	53.444	53.807
45-49	37.859	39.313	40.820	42.335	43.786	45.117	46.379	47.533	48.546	49.413	50.095
50-54	28.562	29.944	31.265	32.574	33.916	35.325	36.646	38.016	39.381	40.690	41.878
55-59	19.701	20.998	22.297	23.584	24.836	26.040	27.274	28.453	29.607	30.796	32.036
60-64	13.956	14.776	15.771	16.890	18.061	19.233	20.509	21.789	23.049	24.283	25.465
65-69	9.078	9.496	9.928	10.423	11.049	11.847	12.548	13.399	14.349	15.343	16.334
70-74	5.603	5.789	5.978	6.174	6.368	6.560	6.876	7.200	7.567	8.029	8.612
75+	4.435	4.524	4.624	4.736	4.866	5.006	5.171	5.340	5.517	5.698	5.885
JUMLAH	715.492	722.894	729.792	736.297	742.298	747.808	752.703	757.089	760.808	764.097	766.593

Tabel II.4.2
 PROYEKSI PENDUDUK
 MENURUT JENIS KELAMIN DAN KELOMPOK UMUR
 TAHUN 2010 - 2020

SERANG

PEREMPUAN

KELOMPOK UMUR	2010	2011	2012	2013	2014	2015	2016	2017	2018	2019	2020
(1)	(2)	(3)	(4)	(5)	(6)	(7)	(8)	(9)	(10)	(11)	(12)
0-4	70.485	71.885	72.819	73.426	73.579	73.159	71.979	70.706	69.357	67.938	66.473
5-9	70.276	70.197	70.506	71.084	71.888	72.889	74.265	75.142	75.677	75.748	75.242
10-14	76.648	75.650	74.659	73.690	72.909	72.444	72.281	72.507	73.007	73.738	74.683
15-19	68.817	67.941	67.128	66.301	65.405	64.435	63.407	62.376	61.368	60.518	59.949
20-24	71.793	71.328	70.727	69.918	68.987	67.938	66.967	66.058	65.132	64.141	63.083
25-29	63.221	63.025	62.569	62.042	61.491	61.065	60.542	59.898	59.079	58.167	57.176
30-34	58.507	59.046	59.538	59.865	59.943	59.660	59.345	58.776	58.140	57.494	56.978
35-39	50.079	51.257	52.281	53.220	54.058	54.848	55.268	55.639	55.843	55.824	55.476
40-44	43.491	44.988	46.444	47.838	49.108	50.224	51.341	52.289	53.148	53.909	54.634
45-49	34.427	35.874	37.336	38.796	40.241	41.649	43.038	44.383	45.656	46.819	47.839
50-54	25.930	27.510	29.007	30.446	31.876	33.332	34.693	36.055	37.413	38.751	40.057
55-59	18.829	20.012	21.392	22.884	24.374	25.772	27.307	28.748	30.132	31.503	32.903
60-64	15.247	15.908	16.614	17.426	18.428	19.666	20.908	22.348	23.904	25.450	26.906
65-69	11.203	11.469	11.846	12.305	12.820	13.358	13.937	14.546	15.249	16.118	17.198
70-74	7.601	7.885	8.113	8.304	8.489	8.690	8.910	9.212	9.576	9.977	10.397
75+	6.750	6.825	6.924	7.052	7.200	7.364	7.611	7.819	8.012	8.205	8.409
JUMLAH	693.304	700.800	707.903	714.597	720.796	726.493	731.799	736.502	740.693	744.300	747.403

Tabel II.4.3
PROYEKSI PENDUDUK
MENURUT JENIS KELAMIN DAN KELOMPOK UMUR
TAHUN 2010 - 2020

SERANG

LAKI-LAKI + PEREMPUAN

KELOMPOK UMUR	2010	2011	2012	2013	2014	2015	2016	2017	2018	2019	2020
(1)	(2)	(3)	(4)	(5)	(6)	(7)	(8)	(9)	(10)	(11)	(12)
0-4	145.739	148.231	149.846	150.716	150.736	149.539	147.187	144.656	141.957	139.135	136.190
5-9	144.280	144.130	144.742	146.078	147.829	150.048	152.493	154.027	154.767	154.657	153.293
10-14	157.788	155.844	153.739	151.591	149.894	148.963	148.667	149.156	150.371	152.023	154.153
15-19	143.548	142.117	140.889	139.619	138.094	136.284	134.264	132.099	129.889	128.083	126.941
20-24	142.622	141.887	140.812	139.378	137.705	135.844	134.216	132.782	131.290	129.582	127.602
25-29	125.594	125.491	124.944	124.227	123.489	122.840	121.967	120.810	119.333	117.690	115.890
30-34	116.754	117.541	118.342	118.902	119.158	118.831	118.485	117.718	116.774	115.846	115.002
35-39	103.703	105.721	107.386	108.899	110.130	111.383	111.957	112.547	112.879	112.953	112.470
40-44	89.587	92.409	95.080	97.555	99.749	101.610	103.459	104.955	106.283	107.353	108.441
45-49	72.286	75.187	78.156	81.131	84.027	86.766	89.417	91.916	94.202	96.232	97.934
50-54	54.492	57.454	60.272	63.020	65.792	68.657	71.339	74.071	76.794	79.441	81.935
55-59	38.530	41.010	43.689	46.468	49.210	51.812	54.581	57.201	59.739	62.299	64.939
60-64	29.203	30.684	32.385	34.316	36.489	38.899	41.417	44.137	46.953	49.733	52.371
65-69	20.281	20.965	21.774	22.728	23.869	25.205	26.485	27.945	29.598	31.461	33.532
70-74	13.204	13.674	14.091	14.478	14.857	15.250	15.786	16.412	17.143	18.006	19.009
75+	11.185	11.349	11.548	11.788	12.066	12.370	12.782	13.159	13.529	13.903	14.294
JUMLAH	1.408.796	1.423.694	1.437.695	1.450.894	1.463.094	1.474.301	1.484.502	1.493.591	1.501.501	1.508.397	1.513.996

Tabel II.5.1
PROYEKSI PENDUDUK
MENURUT JENIS KELAMIN DAN KELOMPOK UMUR
TAHUN 2010 - 2020

KOTA TANGERANG

LAKI-LAKI

KELOMPOK UMUR	2010	2011	2012	2013	2014	2015	2016	2017	2018	2019	2020
(1)	(2)	(3)	(4)	(5)	(6)	(7)	(8)	(9)	(10)	(11)	(12)
0-4	95.329	98.152	100.531	102.422	103.835	104.434	104.508	104.459	104.289	103.993	103.601
5-9	78.949	80.048	81.595	83.693	86.066	88.848	91.548	93.841	95.680	97.066	97.679
10-14	70.476	70.692	70.767	70.783	71.037	71.736	72.783	74.238	76.198	78.403	80.972
15-19	77.798	78.370	79.115	79.846	80.391	80.734	80.920	80.938	80.890	81.103	81.813
20-24	97.489	98.562	99.385	100.013	100.482	100.884	101.537	102.410	103.259	103.859	104.175
25-29	105.501	107.232	108.699	110.033	111.405	112.783	113.972	114.888	115.574	116.088	116.501
30-34	99.682	101.598	103.685	105.695	107.658	109.302	111.028	112.481	113.791	115.147	116.489
35-39	82.525	85.065	87.375	89.641	91.675	93.913	95.704	97.661	99.537	101.375	102.892
40-44	67.168	70.130	73.015	75.788	78.393	80.820	83.311	85.578	87.800	89.796	91.976
45-49	51.564	54.341	57.281	60.320	63.355	66.327	69.295	72.192	74.978	77.602	80.040
50-54	38.933	41.424	43.909	46.448	49.113	51.977	54.797	57.785	60.873	63.955	66.964
55-59	27.682	29.942	32.277	34.662	37.069	39.492	42.038	44.577	47.172	49.891	52.804
60-64	14.309	15.375	16.660	18.117	19.673	21.284	23.065	24.910	26.799	28.706	30.627
65-69	8.115	8.615	9.142	9.746	10.493	11.430	12.303	13.355	14.543	15.812	17.125
70-74	4.771	5.003	5.246	5.501	5.761	6.029	6.423	6.836	7.306	7.883	8.604
75+	4.200	4.345	4.510	4.690	4.892	5.120	5.374	5.638	5.924	6.219	6.529
JUMLAH	924.491	948.894	973.192	997.398	1.021.298	1.045.113	1.068.606	1.091.787	1.114.613	1.136.898	1.158.791

Tabel II.5.2
PROYEKSI PENDUDUK
MENURUT JENIS KELAMIN DAN KELOMPOK UMUR
TAHUN 2010 - 2020

KOTA TANGERANG

PEREMPUAN

KELOMPOK UMUR	2010	2011	2012	2013	2014	2015	2016	2017	2018	2019	2020
(1)	(2)	(3)	(4)	(5)	(6)	(7)	(8)	(9)	(10)	(11)	(12)
0-4	89.690	92.856	95.522	97.832	99.639	100.729	100.788	100.748	100.583	100.318	99.945
5-9	75.290	76.344	77.869	79.746	81.967	84.500	87.557	90.151	92.406	94.171	95.248
10-14	67.758	67.888	68.038	68.213	68.591	69.299	70.314	71.778	73.562	75.650	78.019
15-19	81.367	81.574	81.880	82.178	82.415	82.572	82.641	82.731	82.836	83.167	83.891
20-24	95.041	95.852	96.516	96.908	97.171	97.295	97.526	97.883	98.223	98.475	98.617
25-29	104.189	105.432	106.287	107.042	107.818	108.864	109.759	110.500	110.924	111.195	111.287
30-34	95.380	97.727	100.079	102.213	104.014	105.253	106.460	107.285	107.997	108.723	109.706
35-39	76.668	79.662	82.511	85.318	88.079	90.865	93.120	95.392	97.449	99.183	100.364
40-44	61.304	64.378	67.506	70.630	73.703	76.653	79.696	82.608	85.469	88.278	91.103
45-49	47.885	50.654	53.532	56.502	59.562	62.678	65.865	69.112	72.357	75.537	78.581
50-54	34.494	37.158	39.791	42.428	45.150	48.002	50.816	53.743	56.763	59.863	63.013
55-59	22.482	24.252	26.346	28.659	31.054	33.409	36.035	38.640	41.249	43.929	46.731
60-64	12.075	12.762	13.492	14.330	15.380	16.697	18.045	19.647	21.424	23.266	25.075
65-69	8.335	8.644	9.058	9.548	10.090	10.663	11.298	11.970	12.747	13.703	14.892
70-74	5.466	5.758	6.012	6.246	6.487	6.749	7.024	7.383	7.804	8.265	8.747
75+	6.583	6.760	6.967	7.205	7.476	7.764	8.156	8.533	8.898	9.280	9.687
JUMLAH	884.007	907.701	931.406	954.998	978.596	1.001.992	1.025.100	1.048.104	1.070.691	1.093.003	1.114.906

Tabel II.5.3
 PROYEKSI PENDUDUK
 MENURUT JENIS KELAMIN DAN KELOMPOK UMUR
 TAHUN 2010 - 2020

KOTA TANGERANG

LAKI-LAKI + PEREMPUAN

KELOMPOK UMUR	2010	2011	2012	2013	2014	2015	2016	2017	2018	2019	2020
(1)	(2)	(3)	(4)	(5)	(6)	(7)	(8)	(9)	(10)	(11)	(12)
0-4	185.019	191.008	196.053	200.254	203.474	205.163	205.296	205.207	204.872	204.311	203.546
5-9	154.239	156.392	159.464	163.439	168.033	173.348	179.105	183.992	188.086	191.237	192.927
10-14	138.234	138.580	138.805	138.996	139.628	141.035	143.097	146.016	149.760	154.053	158.991
15-19	159.165	159.944	160.995	162.024	162.806	163.306	163.561	163.669	163.726	164.270	165.704
20-24	192.530	194.414	195.901	196.921	197.653	198.179	199.063	200.293	201.482	202.334	202.792
25-29	209.690	212.664	214.986	217.075	219.223	221.647	223.731	225.388	226.498	227.283	227.788
30-34	195.062	199.325	203.764	207.908	211.672	214.555	217.488	219.766	221.788	223.870	226.195
35-39	159.193	164.727	169.886	174.959	179.754	184.778	188.824	193.053	196.986	200.558	203.256
40-44	128.472	134.508	140.521	146.418	152.096	157.473	163.007	168.186	173.269	178.074	183.079
45-49	99.449	104.995	110.813	116.822	122.917	129.005	135.160	141.304	147.335	153.139	158.621
50-54	73.427	78.582	83.700	88.876	94.263	99.979	105.613	111.528	117.636	123.818	129.977
55-59	50.164	54.194	58.623	63.321	68.123	72.901	78.073	83.217	88.421	93.820	99.535
60-64	26.384	28.137	30.152	32.447	35.053	37.981	41.110	44.557	48.223	51.972	55.702
65-69	16.450	17.259	18.200	19.294	20.583	22.093	23.601	25.325	27.290	29.515	32.017
70-74	10.237	10.761	11.258	11.747	12.248	12.778	13.447	14.219	15.110	16.148	17.351
75+	10.783	11.105	11.477	11.895	12.368	12.884	13.530	14.171	14.822	15.499	16.216
JUMLAH	1.808.498	1.856.595	1.904.598	1.952.396	1.999.894	2.047.105	2.093.706	2.139.891	2.185.304	2.229.901	2.273.697

Tabel II.6.1
 PROYEKSI PENDUDUK
 MENURUT JENIS KELAMIN DAN KELOMPOK UMUR
 TAHUN 2010 - 2020

KOTA CILEGON

LAKI-LAKI

KELOMPOK UMUR	2010	2011	2012	2013	2014	2015	2016	2017	2018	2019	2020
(1)	(2)	(3)	(4)	(5)	(6)	(7)	(8)	(9)	(10)	(11)	(12)
0-4	20.784	21.266	21.640	21.891	22.044	22.028	21.892	21.731	21.546	21.330	21.098
5-9	18.156	18.293	18.527	18.867	19.273	19.768	20.229	20.591	20.849	21.000	20.980
10-14	18.180	18.121	18.024	17.899	17.844	17.903	18.039	18.273	18.626	19.027	19.509
15-19	18.232	18.251	18.305	18.342	18.345	18.305	18.220	18.099	17.963	17.880	17.908
20-24	19.223	19.313	19.349	19.332	19.294	19.246	19.236	19.268	19.293	19.266	19.187
25-29	18.290	18.474	18.607	18.700	18.807	18.917	18.985	19.005	18.987	18.935	18.864
30-34	17.547	17.772	18.021	18.237	18.453	18.615	18.779	18.894	18.980	19.068	19.154
35-39	16.038	16.429	16.765	17.077	17.349	17.658	17.869	18.110	18.330	18.534	18.677
40-44	14.100	14.629	15.134	15.595	16.024	16.415	16.803	17.141	17.465	17.733	18.035
45-49	11.219	11.750	12.304	12.866	13.422	13.962	14.487	14.987	15.459	15.885	16.266
50-54	8.212	8.682	9.144	9.604	10.087	10.606	11.105	11.630	12.166	12.690	13.193
55-59	5.603	6.022	6.449	6.876	7.306	7.732	8.174	8.609	9.046	9.499	9.982
60-64	3.098	3.307	3.560	3.843	4.146	4.457	4.797	5.144	5.497	5.846	6.192
65-69	1.880	1.983	2.092	2.213	2.368	2.562	2.739	2.951	3.192	3.446	3.707
70-74	1.006	1.048	1.093	1.138	1.184	1.231	1.302	1.376	1.460	1.564	1.695
75+	932	961	986	1.022	1.056	1.100	1.147	1.191	1.246	1.299	1.353
JUMLAH	192.500	196.301	200.000	203.502	207.002	210.505	213.803	217.000	220.105	223.002	225.800

Tabel II.6.2
 PROYEKSI PENDUDUK
 MENURUT JENIS KELAMIN DAN KELOMPOK UMUR
 TAHUN 2010 - 2020

KOTA CILEGON

PEREMPUAN

KELOMPOK UMUR	2010	2011	2012	2013	2014	2015	2016	2017	2018	2019	2020
(1)	(2)	(3)	(4)	(5)	(6)	(7)	(8)	(9)	(10)	(11)	(12)
0-4	19.190	19.742	20.174	20.529	20.768	20.839	20.704	20.542	20.357	20.154	19.920
5-9	17.110	17.241	17.468	17.774	18.144	18.564	19.100	19.523	19.864	20.092	20.164
10-14	17.661	17.586	17.507	17.437	17.415	17.464	17.593	17.827	18.135	18.512	18.942
15-19	18.195	18.124	18.069	18.016	17.943	17.841	17.730	17.618	17.511	17.451	17.465
20-24	18.427	18.467	18.470	18.425	18.350	18.234	18.149	18.079	18.007	17.918	17.802
25-29	18.295	18.398	18.422	18.435	18.444	18.484	18.504	18.492	18.425	18.332	18.205
30-34	17.303	17.618	17.918	18.185	18.378	18.458	18.539	18.544	18.534	18.521	18.541
35-39	15.292	15.787	16.242	16.684	17.104	17.511	17.821	18.117	18.372	18.560	18.634
40-44	13.112	13.684	14.250	14.815	15.352	15.844	16.356	16.828	17.281	17.716	18.135
45-49	9.935	10.444	10.967	11.500	12.043	12.578	13.126	13.673	14.212	14.729	15.207
50-54	6.966	7.459	7.936	8.409	8.889	9.381	9.860	10.352	10.854	11.363	11.867
55-59	4.484	4.807	5.189	5.610	6.036	6.446	6.905	7.348	7.786	8.232	8.688
60-64	2.988	3.143	3.305	3.495	3.729	4.016	4.310	4.656	5.034	5.420	5.793
65-69	2.168	2.238	2.329	2.442	2.565	2.697	2.840	2.992	3.167	3.380	3.643
70-74	1.406	1.472	1.527	1.576	1.627	1.681	1.741	1.818	1.911	2.013	2.119
75+	1.372	1.392	1.430	1.470	1.514	1.563	1.624	1.694	1.750	1.810	1.878
JUMLAH	183.904	187.602	191.203	194.802	198.301	201.601	204.902	208.103	211.200	214.203	217.003

Tabel II.6.3
 PROYEKSI PENDUDUK
 MENURUT JENIS KELAMIN DAN KELOMPOK UMUR
 TAHUN 2010 - 2020

KOTA CILEGON

LAKI-LAKI + PEREMPUAN

KELOMPOK UMUR	2010	2011	2012	2013	2014	2015	2016	2017	2018	2019	2020
(1)	(2)	(3)	(4)	(5)	(6)	(7)	(8)	(9)	(10)	(11)	(12)
0-4	39.974	41.008	41.814	42.420	42.812	42.867	42.596	42.273	41.903	41.484	41.018
5-9	35.266	35.534	35.995	36.641	37.417	38.332	39.329	40.114	40.713	41.092	41.144
10-14	35.841	35.707	35.531	35.336	35.259	35.367	35.632	36.100	36.761	37.539	38.451
15-19	36.427	36.375	36.374	36.358	36.288	36.146	35.950	35.717	35.474	35.331	35.373
20-24	37.650	37.780	37.819	37.757	37.644	37.480	37.385	37.347	37.300	37.184	36.989
25-29	36.585	36.872	37.029	37.135	37.251	37.401	37.489	37.497	37.412	37.267	37.069
30-34	34.850	35.390	35.939	36.422	36.831	37.073	37.318	37.438	37.514	37.589	37.695
35-39	31.330	32.216	33.007	33.761	34.453	35.169	35.690	36.227	36.702	37.094	37.311
40-44	27.212	28.313	29.384	30.410	31.376	32.259	33.159	33.969	34.746	35.449	36.170
45-49	21.154	22.194	23.271	24.366	25.465	26.540	27.613	28.660	29.671	30.614	31.473
50-54	15.178	16.141	17.080	18.013	18.976	19.987	20.965	21.982	23.020	24.053	25.060
55-59	10.087	10.829	11.638	12.486	13.342	14.178	15.079	15.957	16.832	17.731	18.670
60-64	6.086	6.450	6.865	7.338	7.875	8.473	9.107	9.800	10.531	11.266	11.985
65-69	4.048	4.221	4.421	4.655	4.933	5.259	5.579	5.943	6.359	6.826	7.350
70-74	2.412	2.520	2.620	2.714	2.811	2.912	3.043	3.194	3.371	3.577	3.814
75+	2.304	2.353	2.416	2.492	2.570	2.663	2.771	2.885	2.996	3.109	3.231
JUMLAH	376.404	383.903	391.203	398.304	405.303	412.106	418.705	425.103	431.305	437.205	442.803

Tabel II.7.1
PROYEKSI PENDUDUK
MENURUT JENIS KELAMIN DAN KELOMPOK UMUR
TAHUN 2010 - 2020

KOTA SERANG

LAKI-LAKI

KELOMPOK UMUR	2010	2011	2012	2013	2014	2015	2016	2017	2018	2019	2020
(1)	(2)	(3)	(4)	(5)	(6)	(7)	(8)	(9)	(10)	(11)	(12)
0-4	32.819	33.691	34.410	34.941	35.305	35.382	35.281	35.131	34.942	34.689	34.418
5-9	30.912	31.248	31.761	32.470	33.280	34.233	35.148	35.892	36.458	36.822	36.904
10-14	31.855	31.857	31.801	31.702	31.711	31.909	32.258	32.780	33.518	34.337	35.317
15-19	30.849	30.983	31.188	31.371	31.482	31.504	31.464	31.351	31.214	31.159	31.305
20-24	30.173	30.414	30.581	30.671	30.713	30.726	30.815	30.962	31.102	31.144	31.114
25-29	27.282	27.647	27.945	28.195	28.451	28.701	28.902	29.022	29.086	29.085	29.072
30-34	26.021	26.442	26.908	27.338	27.755	28.079	28.419	28.682	28.908	29.123	29.344
35-39	23.735	24.393	24.984	25.547	26.040	26.580	26.992	27.438	27.861	28.250	28.558
40-44	20.326	21.159	21.967	22.725	23.429	24.068	24.722	25.297	25.856	26.329	26.858
45-49	15.316	16.092	16.915	17.752	18.584	19.386	20.183	20.946	21.673	22.332	22.940
50-54	11.350	12.040	12.726	13.418	14.140	14.910	15.664	16.455	17.269	18.064	18.838
55-59	7.485	8.073	8.678	9.288	9.901	10.510	11.147	11.775	12.414	13.072	13.779
60-64	4.365	4.676	5.052	5.476	5.927	6.389	6.899	7.425	7.955	8.484	9.014
65-69	2.719	2.879	3.046	3.237	3.474	3.770	4.044	4.372	4.745	5.136	5.540
70-74	1.725	1.802	1.885	1.970	2.056	2.144	2.277	2.414	2.569	2.761	3.001
75+	1.266	1.303	1.352	1.400	1.453	1.515	1.588	1.655	1.735	1.814	1.897
JUMLAH	298.198	304.699	311.199	317.501	323.701	329.806	335.803	341.597	347.305	352.601	357.899

Tabel II.7.2
 PROYEKSI PENDUDUK
 MENURUT JENIS KELAMIN DAN KELOMPOK UMUR
 TAHUN 2010 - 2020

KOTA SERANG

PEREMPUAN

KELOMPOK UMUR	2010	2011	2012	2013	2014	2015	2016	2017	2018	2019	2020
(1)	(2)	(3)	(4)	(5)	(6)	(7)	(8)	(9)	(10)	(11)	(12)
0-4	31.028	32.024	32.828	33.510	34.004	34.243	34.119	33.961	33.748	33.510	33.224
5-9	29.188	29.507	29.993	30.612	31.348	32.192	33.217	34.058	34.748	35.256	35.489
10-14	30.046	30.012	29.973	29.951	30.006	30.199	30.512	31.016	31.637	32.392	33.244
15-19	30.387	30.366	30.370	30.375	30.346	30.281	30.180	30.087	29.985	29.974	30.087
20-24	28.455	28.609	28.707	28.727	28.699	28.620	28.567	28.548	28.508	28.455	28.353
25-29	26.251	26.481	26.602	26.699	26.792	26.944	27.050	27.119	27.094	27.042	26.929
30-34	25.234	25.773	26.305	26.775	27.146	27.363	27.563	27.660	27.712	27.779	27.892
35-39	22.515	23.319	24.068	24.802	25.508	26.212	26.747	27.285	27.742	28.111	28.308
40-44	17.916	18.759	19.604	20.447	21.259	22.028	22.809	23.550	24.253	24.944	25.621
45-49	13.742	14.494	15.264	16.059	16.868	17.682	18.505	19.339	20.154	20.951	21.693
50-54	9.600	10.313	11.007	11.699	12.407	13.142	13.853	14.591	15.340	16.107	16.876
55-59	6.575	7.070	7.652	8.291	8.946	9.584	10.289	10.982	11.664	12.365	13.088
60-64	4.394	4.636	4.896	5.193	5.560	6.010	6.470	7.007	7.600	8.205	8.793
65-69	3.230	3.343	3.494	3.673	3.873	4.088	4.317	4.564	4.843	5.188	5.609
70-74	2.139	2.249	2.339	2.423	2.508	2.601	2.697	2.825	2.974	3.136	3.306
75+	1.904	1.947	2.001	2.065	2.130	2.210	2.306	2.411	2.497	2.587	2.691
JUMLAH	282.604	288.902	295.103	301.301	307.400	313.399	319.201	325.003	330.499	336.002	341.203

Tabel II.7.3
 PROYEKSI PENDUDUK
 MENURUT JENIS KELAMIN DAN KELOMPOK UMUR
 TAHUN 2010 - 2020

KOTA SERANG

LAKI-LAKI + PEREMPUAN

KELOMPOK UMUR	2010	2011	2012	2013	2014	2015	2016	2017	2018	2019	2020
(1)	(2)	(3)	(4)	(5)	(6)	(7)	(8)	(9)	(10)	(11)	(12)
0-4	63.847	65.715	67.238	68.451	69.309	69.625	69.400	69.092	68.690	68.199	67.642
5-9	60.100	60.755	61.754	63.082	64.628	66.425	68.365	69.950	71.206	72.078	72.393
10-14	61.901	61.869	61.774	61.653	61.717	62.108	62.770	63.796	65.155	66.729	68.561
15-19	61.236	61.349	61.558	61.746	61.828	61.785	61.644	61.438	61.199	61.133	61.392
20-24	58.628	59.023	59.288	59.398	59.412	59.346	59.382	59.510	59.610	59.599	59.467
25-29	53.533	54.128	54.547	54.894	55.243	55.645	55.952	56.141	56.180	56.127	56.001
30-34	51.255	52.215	53.213	54.113	54.901	55.442	55.982	56.342	56.620	56.902	57.236
35-39	46.250	47.712	49.052	50.349	51.548	52.792	53.739	54.723	55.603	56.361	56.866
40-44	38.242	39.918	41.571	43.172	44.688	46.096	47.531	48.847	50.109	51.273	52.479
45-49	29.058	30.586	32.179	33.811	35.452	37.068	38.688	40.285	41.827	43.283	44.633
50-54	20.950	22.353	23.733	25.117	26.547	28.052	29.517	31.046	32.609	34.171	35.714
55-59	14.060	15.143	16.330	17.579	18.847	20.094	21.436	22.757	24.078	25.437	26.867
60-64	8.759	9.312	9.948	10.669	11.487	12.399	13.369	14.432	15.555	16.689	17.807
65-69	5.949	6.222	6.540	6.910	7.347	7.858	8.361	8.936	9.588	10.324	11.149
70-74	3.864	4.051	4.224	4.393	4.564	4.745	4.974	5.239	5.543	5.897	6.307
75+	3.170	3.250	3.353	3.465	3.583	3.725	3.894	4.066	4.232	4.401	4.588
JUMLAH	580.802	593.601	606.302	618.802	631.101	643.205	655.004	666.600	677.804	688.603	699.102

Tabel II.8.1
 PROYEKSI PENDUDUK
 MENURUT JENIS KELAMIN DAN KELOMPOK UMUR
 TAHUN 2010 - 2020

KOTA TANGERANG SELATAN

LAKI-LAKI

KELOMPOK UMUR	2010	2011	2012	2013	2014	2015	2016	2017	2018	2019	2020
(1)	(2)	(3)	(4)	(5)	(6)	(7)	(8)	(9)	(10)	(11)	(12)
0-4	64.551	67.049	69.271	71.177	72.782	73.822	74.491	75.083	75.589	76.009	76.340
5-9	58.018	59.344	61.017	63.120	65.471	68.160	70.817	73.202	75.262	76.994	78.113
10-14	53.704	54.344	54.872	55.356	56.034	57.066	58.378	60.050	62.149	64.489	67.142
15-19	56.143	57.054	58.097	59.135	60.052	60.822	61.468	62.001	62.482	63.174	64.246
20-24	61.217	62.437	63.505	64.452	65.315	66.132	67.115	68.263	69.405	70.396	71.187
25-29	65.104	66.756	68.258	69.686	71.163	72.655	74.034	75.258	76.341	77.325	78.234
30-34	65.230	67.071	69.045	70.984	72.926	74.668	76.480	78.134	79.706	81.334	82.954
35-39	59.957	62.348	64.598	66.840	68.947	71.229	73.193	75.319	77.409	79.500	81.350
40-44	51.834	54.598	57.336	60.023	62.624	65.111	67.675	70.103	72.525	74.800	77.240
45-49	40.741	43.314	46.055	48.912	51.817	54.708	57.632	60.548	63.411	66.182	68.818
50-54	30.458	32.693	34.955	37.293	39.773	42.448	45.124	47.987	50.974	54.005	57.008
55-59	21.583	23.553	25.611	27.737	29.921	32.145	34.502	36.895	39.370	41.990	44.803
60-64	11.576	12.549	13.716	15.042	16.476	17.976	19.644	21.392	23.208	25.071	26.965
65-69	7.044	7.544	8.076	8.682	9.429	10.358	11.243	12.305	13.513	14.817	16.180
70-74	4.144	4.383	4.637	4.903	5.179	5.466	5.873	6.303	6.793	7.391	8.131
75+	3.892	4.061	4.248	4.460	4.691	4.947	5.239	5.549	5.876	6.224	6.585
JUMLAH	655.196	679.098	703.297	727.802	752.600	777.713	802.908	828.392	854.013	879.701	905.296

Tabel II.8.2
 PROYEKSI PENDUDUK
 MENURUT JENIS KELAMIN DAN KELOMPOK UMUR
 TAHUN 2010 - 2020

KOTA TANGERANG SELATAN

PEREMPUAN

KELOMPOK UMUR	2010	2011	2012	2013	2014	2015	2016	2017	2018	2019	2020
(1)	(2)	(3)	(4)	(5)	(6)	(7)	(8)	(9)	(10)	(11)	(12)
0-4	60.904	63.616	66.015	68.206	70.059	71.429	72.084	72.660	73.156	73.570	73.916
5-9	55.263	56.536	58.170	60.096	62.299	64.773	67.692	70.282	72.649	74.655	76.145
10-14	51.192	51.746	52.319	52.912	53.661	54.675	55.958	57.598	59.530	61.728	64.203
15-19	59.974	60.664	61.429	62.198	62.915	63.571	64.174	64.780	65.410	66.219	67.359
20-24	63.830	64.952	65.980	66.834	67.593	68.262	69.021	69.866	70.712	71.492	72.203
25-29	68.232	69.670	70.861	72.002	73.159	74.502	75.762	76.917	77.871	78.718	79.454
30-34	65.905	68.118	70.361	72.489	74.401	75.934	77.473	78.740	79.942	81.165	82.594
35-39	58.523	61.336	64.074	66.823	69.558	72.360	74.781	77.240	79.568	81.663	83.338
40-44	48.513	51.394	54.361	57.370	60.368	63.312	66.386	69.379	72.384	75.373	78.436
45-49	38.814	41.420	44.155	47.016	49.982	53.041	56.212	59.475	62.785	66.085	69.322
50-54	27.271	29.637	32.014	34.434	36.954	39.626	42.305	45.116	48.054	51.100	54.244
55-59	17.703	19.267	21.110	23.166	25.315	27.466	29.881	32.305	34.775	37.342	40.061
60-64	9.668	10.308	10.992	11.775	12.743	13.952	15.209	16.703	18.366	20.110	21.861
65-69	7.283	7.622	8.055	8.568	9.134	9.735	10.403	11.119	11.939	12.941	14.181
70-74	4.532	4.818	5.073	5.318	5.567	5.841	6.127	6.493	6.918	7.386	7.879
75+	5.701	5.900	6.139	6.394	6.691	7.017	7.436	7.834	8.236	8.658	9.113
JUMLAH	643.308	667.004	691.108	715.601	740.399	765.496	790.904	816.507	842.295	868.205	894.309

Tabel II.8.3
PROYEKSI PENDUDUK
MENURUT JENIS KELAMIN DAN KELOMPOK UMUR
TAHUN 2010 - 2020

KOTA TANGERANG SELATAN

LAKI-LAKI + PEREMPUAN

KELOMPOK UMUR	2010	2011	2012	2013	2014	2015	2016	2017	2018	2019	2020
(1)	(2)	(3)	(4)	(5)	(6)	(7)	(8)	(9)	(10)	(11)	(12)
0-4	125.455	130.665	135.286	139.383	142.841	145.251	146.575	147.743	148.745	149.579	150.256
5-9	113.281	115.880	119.187	123.216	127.770	132.933	138.509	143.484	147.911	151.649	154.258
10-14	104.896	106.090	107.191	108.268	109.695	111.741	114.336	117.648	121.679	126.217	131.345
15-19	116.117	117.718	119.526	121.333	122.967	124.393	125.642	126.781	127.892	129.393	131.605
20-24	125.047	127.389	129.485	131.286	132.908	134.394	136.136	138.129	140.117	141.888	143.390
25-29	133.336	136.426	139.119	141.688	144.322	147.157	149.796	152.175	154.212	156.043	157.688
30-34	131.135	135.189	139.406	143.473	147.327	150.602	153.953	156.874	159.648	162.499	165.548
35-39	118.480	123.684	128.672	133.663	138.505	143.589	147.974	152.559	156.977	161.163	164.688
40-44	100.347	105.992	111.697	117.393	122.992	128.423	134.061	139.482	144.909	150.173	155.676
45-49	79.555	84.734	90.210	95.928	101.799	107.749	113.844	120.023	126.196	132.267	138.140
50-54	57.729	62.330	66.969	71.727	76.727	82.074	87.429	93.103	99.028	105.105	111.252
55-59	39.286	42.820	46.721	50.903	55.236	59.611	64.383	69.200	74.145	79.332	84.864
60-64	21.244	22.857	24.708	26.817	29.219	31.928	34.853	38.095	41.574	45.181	48.826
65-69	14.327	15.166	16.131	17.250	18.563	20.093	21.646	23.424	25.452	27.758	30.361
70-74	8.676	9.201	9.710	10.221	10.746	11.307	12.000	12.796	13.711	14.777	16.010
75+	9.593	9.961	10.387	10.854	11.382	11.964	12.675	13.383	14.112	14.882	15.698
JUMLAH	1.298.504	1.346.102	1.394.405	1.443.403	1.492.999	1.543.209	1.593.812	1.644.899	1.696.308	1.747.906	1.799.605

DATA

MENCERDASKAN BANGSA

<http://www.bps.go.id>



BADAN PUSAT STATISTIK

Jl. Dr. Sutomo 6-8 Jakarta 10710

Tel. : (021) 3841195, 3842508, 3810291-4 Fax. : (021) 3857046

Homepage : <http://www.bps.go.id> E-mail : bpsHQ@bps.go.id