

**Proyeksi
Penduduk Kabupaten/Kota
Provinsi Bali**

2010-2020



**BADAN PUSAT STATISTIK
UNITED NATIONS POPULATION FUND**

JAKARTA 2015



BADAN PUSAT STATISTIK



**Proyeksi
Penduduk Kabupaten/Kota
Provinsi Bali**

2010-2020



**PROYEKSI PENDUDUK KABUPATEN/KOTA
TAHUN 2010 – 2020 PROVINSI BALI**

Pengarah:

Drs. Razali Ritonga, MA

Tim Teknis:

Dr. Indra Murty Surbakti, MA; Poetrijanti, S.Si; Dendi Handiyatmo SST, M.Si;
Hermawan Agustina, S.Kom;

Penyusun/Penulis:

Subekti, M.Sc

Parwoto SST, M.Stat

Pengolah Data:

Ari Purbowati, S.Si

Layout:

Nuraini, S.ST

<http://www.bps.go.id>

KATA PENGANTAR

Proyeksi Penduduk Indonesia tahun 2010 - 2035 yang merupakan proyeksi penduduk untuk tingkat nasional dan provinsi telah diterbitkan pada tahun 2013. Untuk memenuhi kebutuhan data penduduk pada tingkat kabupaten/kota maka disusun proyeksi ini berdasarkan hasil Sensus Penduduk 2010 dan sesuai dengan asumsi penghitungan proyeksi nasional dan provinsi. Adapun metode yang digunakan memanfaatkan tren pertumbuhan penduduk sejak tahun 2000, dimana data kabupaten/kota sudah tersedia.

Publikasi Proyeksi Kabupaten/Kota disusun untuk periode 2010 - 2020 dengan tujuan untuk menunjang perencanaan pada tingkat kabupaten/kota di masa kini dan mendatang. Periode yang disampaikan cukup singkat dengan pertimbangan agar tren yang digunakan tidak terlalu menyimpang, sehingga hasil proyeksi ini masih dianggap realistis. Dengan demikian, untuk saat ini Badan Pusat Statistik telah menyediakan data proyeksi penduduk tingkat nasional, provinsi, dan kabupaten/kota yang dapat dimanfaatkan oleh semua pengguna data.

Penyusunan buku ini merupakan hasil kerja sama antara BPS dan UNFPA. Kami mengucapkan terima kasih kepada semua pihak yang telah membantu penyusunan buku ini. Semoga bermanfaat dan dapat memenuhi kebutuhan semua pihak yang memerlukan, khususnya bagi pihak yang berminat pada masalah sosial dan kependudukan.

Jakarta, Juni 2015

Kepala Badan Pusat Statistik,



Dr. Suryamin, M.Sc

<http://www.bps.go.id>

DAFTAR ISI

	Halaman
KATA PENGANTAR	iii
DAFTAR ISI	v
BAB I. PENDAHULUAN	1
BAB II. METODOLOGI	3
LAMPIRAN	
Tabel I.1 Proyeksi Penduduk Menurut Kabupaten/Kota dan Jenis Kelamin Tahun 2010 - 2020	7
Tabel I.2 Rasio Jenis Kelamin Menurut Kabupaten/Kota Tahun 2010 - 2020	10
Tabel I.3 Rasio Ketergantungan Menurut Kabupaten/Kota Tahun 2010 - 2020.....	11
Tabel I.4 Persentase Penduduk Perkotaan Menurut Kabupaten/Kota Tahun 2010 - 2020	12
Tabel I.5 Persentase Penduduk Lansia Menurut Kabupaten/Kota Tahun 2010 - 2020..	13
Gambar I Piramida Penduduk Menurut Kabupaten/Kota Tahun 2010 - 2020.....	14
Tabel II Proyeksi Penduduk Menurut Jenis Kelamin dan Kelompok Umur Tahun 2010 - 2020	23

<http://www.bps.go.id>

BAB I

PENDAHULUAN

Informasi mengenai jumlah penduduk untuk wilayah kabupaten/kota pada suatu waktu tertentu dibutuhkan dalam perencanaan program dan penentuan kebijakan di wilayah tersebut. Ketersediaan data penduduk dapat dipenuhi dari hasil sensus penduduk ataupun survei tentang kependudukan namun sayangnya tidak setiap tahun tersedia. Oleh karena itu, perlu dibuat suatu perkiraan mengenai jumlah penduduk untuk wilayah kabupaten/kota untuk mengisi kekosongan pada tahun-tahun tertentu atau untuk masa yang akan datang. Ketersediaan data penduduk selain jumlahnya juga dilengkapi dengan karakteristik jenis kelamin dan umur.

Secara nasional dan pada tingkat provinsi informasi penduduk masa yang datang diproyeksikan menggunakan metode komponen, dimana metode tersebut mempertimbangkan pengaruh kelahiran, kematian, dan perpindahan. Untuk tingkat kabupaten/kota dilakukan estimasi penduduk dengan mempertimbangkan laju pertumbuhan untuk masing-masing kabupaten/kota, dimana jumlahnya dipagu dari hasil proyeksi provinsinya. Metode estimasi yang digunakan untuk memperkirakan penduduk masa yang akan datang menggunakan metode geometrik. Pemilihan metode ini didasarkan kesesuaian pertambahan secara geometrik dengan perkembangan jumlah penduduk dan disadari bahwa belum dapat dilakukannya proyeksi komponen untuk kabupaten/kota karena komponen pertumbuhan belum tersedia lengkap.

Proyeksi penduduk kabupaten/kota menurut kelompok umur, dan jenis kelamin yang disajikan dalam publikasi ini mencakup kurun waktu sepuluh tahun, mulai tahun 2010 sampai dengan 2020. Pembuatan proyeksi dengan kurun waktu singkat ini dimaksudkan agar hasilnya dapat digunakan untuk berbagai keperluan terutama perencanaan di masa datang.

<http://www.bps.go.id>

BAB II

METODOLOGI

Estimasi penduduk dengan metode geometrik menggunakan asumsi bahwa jumlah penduduk akan bertambah secara geometrik menggunakan dasar perhitungan bunga majemuk. Laju pertumbuhan penduduk (*rate of growth*) dianggap sama untuk setiap tahun. Berikut formula yang digunakan pada metode geometrik:

$$P_t = P_0(1+r)^t$$

$$r = \left(\frac{P_t}{P_0}\right)^{\frac{1}{t}} - 1$$

dimana:

- P_t = jumlah penduduk pada tahun t
- P_0 = jumlah penduduk pada tahun awal
- r = laju pertumbuhan penduduk
- t = periode waktu antara tahun dasar dan tahun t (dalam tahun)

Data yang dibutuhkan:

- Jumlah penduduk Indonesia hasil proyeksi penduduk 2010 - 2020 yang dirinci menurut provinsi.
- Jumlah penduduk kabupaten/kota hasil SP2000, SP2010, khusus untuk kabupaten/kota di Provinsi Aceh dan Pulau Nias menggunakan data hasil SPAN2005.

Tahapan menghitung proyeksi penduduk kabupaten/kota:

1. Menentukan sumber data dari hasil sensus penduduk dan menyiapkan dua data penduduk untuk tahun yang berbeda pada suatu wilayah yang akan diestimasi.
2. Menghitung rata-rata laju pertumbuhan penduduk (LPP) per tahun dengan metode geometrik berdasarkan jumlah penduduk dari dua data.

3. Melakukan proses prorata, agar penjumlahan penduduk untuk semua kabupaten/kota menjadi sama dengan penduduk provinsi (penduduk provinsi sebagai kontrol).
4. Jumlah penduduk per kabupaten/kota ini selanjutnya akan digunakan sebagai kontrol untuk menghitung jumlah penduduk menurut kota/desa, jenis kelamin, maupun menurut kelompok umur.
5. Estimasi penduduk untuk karakteristik jenis kelamin diolah terlebih dahulu, kemudian dilanjutkan dengan estimasi penduduk perkotaan dan perdesaan.
6. Melakukan proses iterasi untuk penduduk kabupaten/kota menurut jenis kelamin dan kelompok umur, dengan jumlah penduduk provinsi sebagai kontrol.
7. Untuk kabupaten/kota pemekaran yang pada saat sensus belum terbentuk, data ditelusuri menggunakan data SP2000, SPAN2005, dan SP2010.

LAMPIRAN

<http://www.ips.go.id>

Tabel I.1.1
PROYEKSI PENDUDUK
MENURUT KABUPATEN/KOTA DAN JENIS KELAMIN
TAHUN 2010 - 2020

BALI

LAKI-LAKI

KABUPATEN/KOTA	2010	2011	2012	2013	2014	2015	2016	2017	2018	2019	2020
(1)	(2)	(3)	(4)	(5)	(6)	(7)	(8)	(9)	(10)	(11)	(12)
JEMBRANA	130.373	131.202	132.121	132.982	133.933	134.794	135.699	136.391	137.298	138.026	138.669
TABANAN	209.602	211.093	212.373	213.805	215.061	216.520	217.704	219.038	220.176	221.177	222.406
BADUNG	278.817	285.980	293.243	300.422	307.408	314.285	321.282	328.223	335.088	341.899	348.434
GIANYAR	238.020	240.508	242.767	245.393	247.497	249.926	252.186	254.381	256.383	258.491	260.605
KLUNGKUNG	84.609	85.096	85.459	86.033	86.537	86.867	87.413	87.695	88.211	88.615	88.996
BANGLI	109.271	110.002	110.611	111.171	111.966	112.635	113.100	113.935	114.365	114.916	115.529
KARANG ASEM	198.896	200.084	201.244	202.231	203.371	204.423	205.501	206.515	207.619	208.339	209.394
BULELENG	311.870	313.891	315.909	318.026	319.970	321.889	323.780	325.622	327.289	328.959	330.704
KOTA DENPASAR	404.719	413.878	423.314	431.958	440.937	449.666	458.277	466.651	475.083	483.692	491.501
JUMLAH	1.966.177	1.991.734	2.017.041	2.042.021	2.066.680	2.091.005	2.114.942	2.138.451	2.161.512	2.184.114	2.206.238

Tabel I.1.2
PROYEKSI PENDUDUK
MENURUT KABUPATEN/KOTA DAN JENIS KELAMIN

TAHUN 2010 - 2020

BALI

PEREMPUAN

KABUPATEN/KOTA	2010	2011	2012	2013	2014	2015	2016	2017	2018	2019	2020
(1)	(2)	(3)	(4)	(5)	(6)	(7)	(8)	(9)	(10)	(11)	(12)
JEMBRANA	132.224	133.166	134.119	135.025	135.862	136.788	137.621	138.546	139.290	140.108	140.929
TABANAN	212.729	213.996	215.448	216.825	218.218	219.397	220.785	221.996	223.334	224.532	225.588
BADUNG	267.877	274.924	281.768	288.585	295.288	302.144	308.732	315.251	321.833	328.328	334.769
GIANYAR	233.579	235.951	238.412	240.631	243.029	245.219	247.397	249.519	251.725	253.684	255.739
KLUNGKUNG	86.492	87.028	87.401	87.856	88.309	88.804	89.257	89.689	90.056	90.460	90.900
BANGLI	106.840	107.372	108.080	108.818	109.342	109.977	110.719	111.159	111.796	112.380	112.896
KARANG ASEM	198.913	199.915	200.956	202.074	203.180	204.279	205.302	206.307	207.181	208.284	209.096
BULELENG	314.338	316.430	318.399	320.272	322.326	324.325	326.296	327.982	329.891	331.609	333.291
KOTA DENPASAR	388.254	397.047	405.612	414.236	422.656	430.895	439.018	447.628	455.536	463.424	471.378
JUMLAH	1.941.246	1.965.829	1.990.195	2.014.322	2.038.210	2.061.828	2.085.127	2.108.077	2.130.642	2.152.809	2.174.586

Tabel I.1.3
 PROYEKSI PENDUDUK
 MENURUT KABUPATEN/KOTA DAN JENIS KELAMIN

TAHUN 2010 - 2020

BALI

LAKI-LAKI + PEREMPUAN

KABUPATEN/KOTA	2010	2011	2012	2013	2014	2015	2016	2017	2018	2019	2020
(1)	(2)	(3)	(4)	(5)	(6)	(7)	(8)	(9)	(10)	(11)	(12)
JEMBRANA	262.597	264.368	266.240	268.007	269.795	271.582	273.320	274.937	276.588	278.134	279.598
TABANAN	422.331	425.089	427.821	430.630	433.279	435.917	438.489	441.034	443.510	445.709	447.994
BADUNG	546.694	560.904	575.011	589.007	602.696	616.429	630.014	643.474	656.921	670.227	683.203
GIANYAR	471.599	476.459	481.179	486.024	490.526	495.145	499.583	503.900	508.108	512.175	516.344
KLUNGKUNG	171.101	172.124	172.860	173.889	174.846	175.671	176.670	177.384	178.267	179.075	179.896
BANGLI	216.111	217.374	218.691	219.989	221.308	222.612	223.819	225.094	226.161	227.296	228.425
KARANG ASEM	397.809	399.999	402.200	404.305	406.551	408.702	410.803	412.822	414.800	416.623	418.490
BULELENG	626.208	630.321	634.308	638.298	642.296	646.214	650.076	653.604	657.180	660.568	663.995
KOTA DENPASAR	792.973	810.925	828.926	846.194	863.593	880.561	897.295	914.279	930.619	947.116	962.879
JUMLAH	3.907.423	3.957.563	4.007.236	4.056.343	4.104.890	4.152.833	4.200.069	4.246.528	4.292.154	4.336.923	4.380.824

Tabel I.2
RASIO JENIS KELAMIN
MENURUT KABUPATEN/KOTA
TAHUN 2010 - 2020

BALI

KABUPATEN/KOTA	2010	2011	2012	2013	2014	2015	2016	2017	2018	2019	2020
(1)	(2)	(3)	(4)	(5)	(6)	(7)	(8)	(9)	(10)	(11)	(12)
JEMBRANA	98,60	98,53	98,51	98,49	98,58	98,54	98,60	98,44	98,57	98,51	98,40
TABANAN	98,53	98,64	98,57	98,61	98,55	98,69	98,60	98,67	98,59	98,51	98,59
BADUNG	104,08	104,02	104,07	104,10	104,10	104,02	104,07	104,11	104,12	104,13	104,08
GIANYAR	101,90	101,93	101,83	101,98	101,84	101,92	101,94	101,95	101,85	101,89	101,90
KLUNGKUNG	97,82	97,78	97,78	97,93	97,99	97,82	97,93	97,78	97,95	97,96	97,91
BANGLI	102,28	102,45	102,34	102,16	102,40	102,42	102,15	102,50	102,30	102,26	102,33
KARANG ASEM	99,99	100,08	100,14	100,08	100,09	100,07	100,10	100,10	100,21	100,03	100,14
BULELENG	99,21	99,20	99,22	99,30	99,27	99,25	99,23	99,28	99,21	99,20	99,22
KOTA DENPASAR	104,24	104,24	104,36	104,28	104,33	104,36	104,39	104,25	104,29	104,37	104,27
JUMLAH	101,28	101,32	101,35	101,38	101,40	101,42	101,43	101,44	101,45	101,45	101,46

Tabel I.3
 RASIO KETERGANTUNGAN
 MENURUT KABUPATEN/KOTA
 TAHUN 2010 - 2020

BALI

KABUPATEN/KOTA	2010	2011	2012	2013	2014	2015	2016	2017	2018	2019	2020
(1)	(2)	(3)	(4)	(5)	(6)	(7)	(8)	(9)	(10)	(11)	(12)
JEMBRANA	47,98	47,65	47,32	47,01	46,72	46,33	45,90	45,35	44,83	44,36	43,91
TABANAN	46,02	45,70	45,41	45,14	44,90	44,61	44,29	43,88	43,53	43,22	42,95
BADUNG	43,71	43,50	43,28	43,07	42,89	42,63	42,32	41,90	41,50	41,12	40,75
GIANYAR	47,09	46,85	46,61	46,39	46,19	45,90	45,56	45,12	44,71	44,33	43,97
KLUNGKUNG	53,79	53,43	53,08	52,75	52,45	52,06	51,63	51,10	50,61	50,17	49,79
BANGLI	53,56	53,25	52,95	52,66	52,38	52,01	51,60	51,07	50,58	50,13	49,73
KARANG ASEM	56,62	56,29	55,97	55,66	55,36	54,96	54,49	53,90	53,35	52,83	52,35
BULELENG	52,94	52,59	52,26	51,93	51,63	51,22	50,76	50,16	49,59	49,07	48,58
KOTA DENPASAR	38,65	38,44	38,22	38,01	37,82	37,56	37,25	36,84	36,44	36,05	35,66
JUMLAH	47,17	46,85	46,54	46,25	45,98	45,62	45,22	44,71	44,24	43,79	43,37

Tabel I.4
 PERSENTASE PENDUDUK PERKOTAAN
 MENURUT KABUPATEN/KOTA
 TAHUN 2010 - 2020

BALI

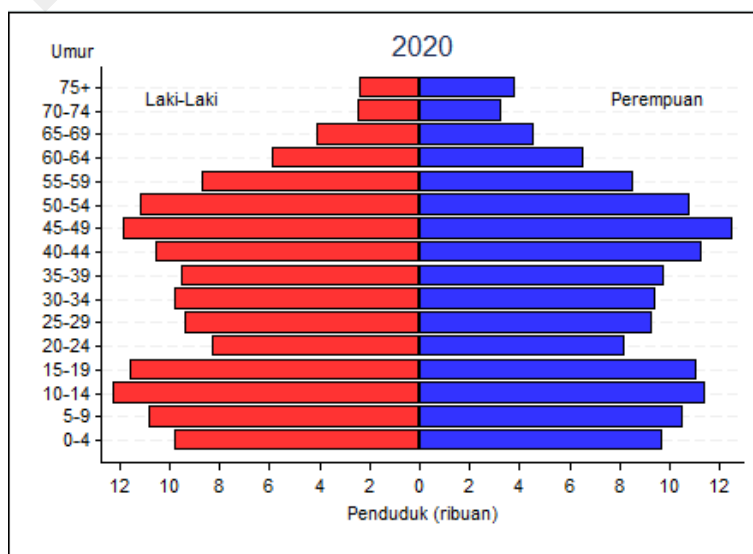
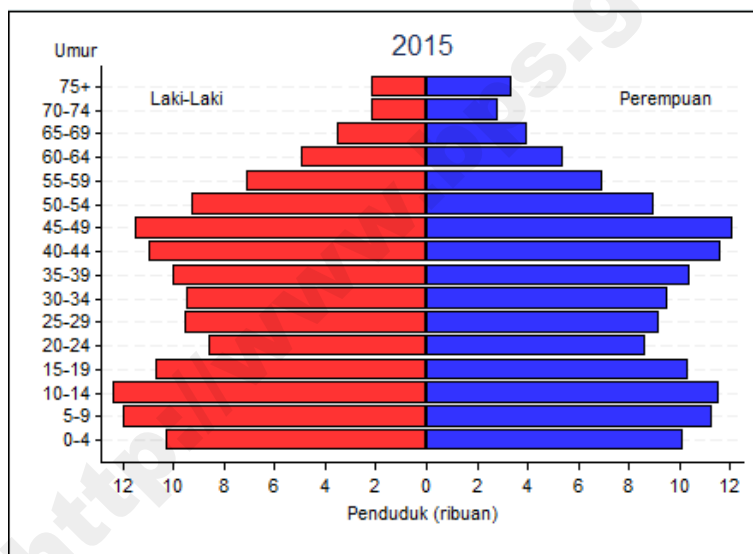
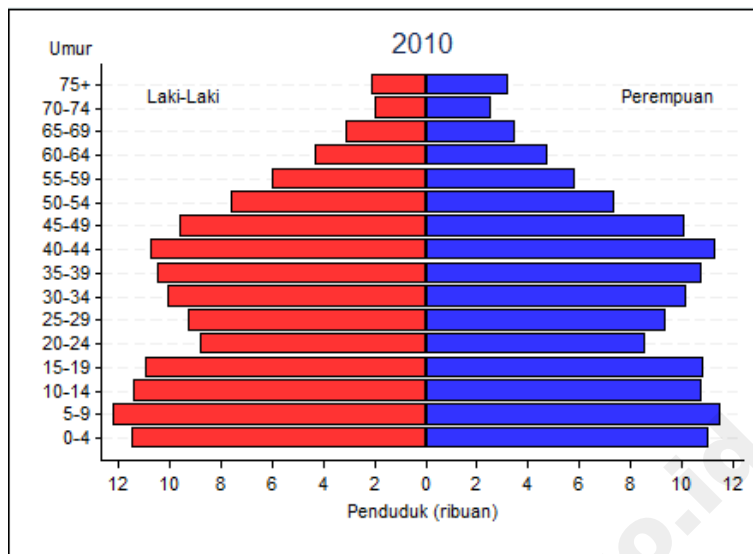
KABUPATEN/KOTA	2010	2011	2012	2013	2014	2015	2016	2017	2018	2019	2020
(1)	(2)	(3)	(4)	(5)	(6)	(7)	(8)	(9)	(10)	(11)	(12)
JEMBRANA	47,33	48,40	49,47	50,53	51,59	52,66	53,60	54,54	55,49	56,43	57,37
TABANAN	38,30	39,37	40,43	41,50	42,56	43,63	44,57	45,51	46,45	47,39	48,33
BADUNG	81,66	82,73	83,80	84,87	85,93	87,00	87,95	88,89	89,83	90,77	91,71
GIANYAR	68,55	69,62	70,68	71,75	72,82	73,88	74,82	75,77	76,70	77,65	78,59
KLUNGKUNG	51,40	52,46	53,53	54,59	55,65	56,72	57,66	58,60	59,55	60,49	61,43
BANGLI	21,65	22,72	23,79	24,85	25,92	26,98	27,93	28,87	29,81	30,75	31,69
KARANG ASEM	22,56	23,62	24,70	25,76	26,83	27,90	28,84	29,78	30,72	31,66	32,60
BULELENG	44,78	45,84	46,91	47,97	49,04	50,11	51,05	51,99	52,93	53,87	54,81
KOTA DENPASAR	100,00	100,00	100,00	100,00	100,00	100,00	100,00	100,00	100,00	100,00	100,00
JUMLAH	60,21	61,27	62,34	63,41	64,48	65,54	66,49	67,43	68,37	69,31	70,25

Tabel I.5
PERSENTASE PENDUDUK LANSIA
MENURUT KABUPATEN/KOTA
TAHUN 2010 - 2020

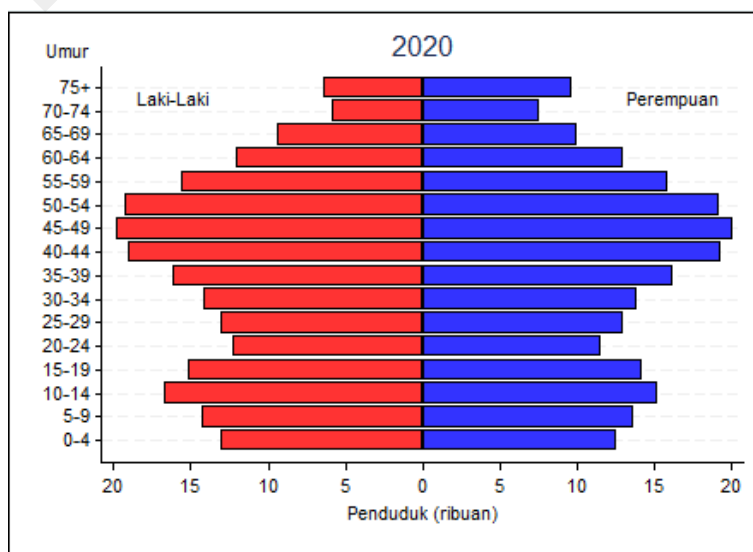
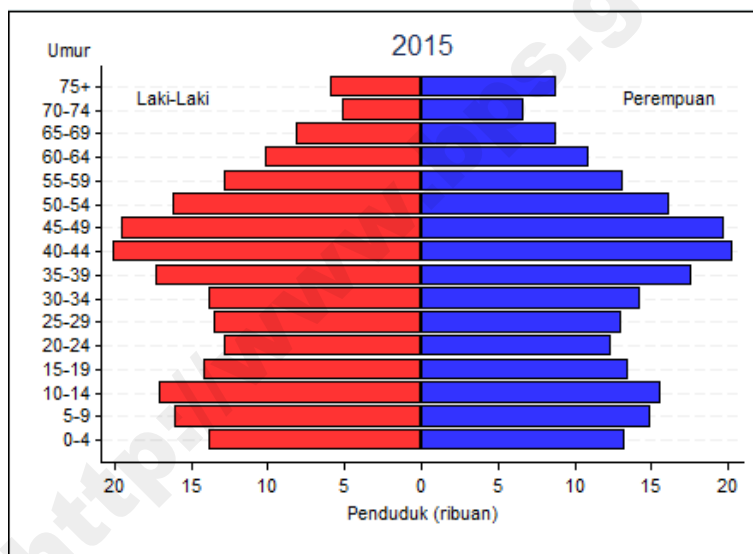
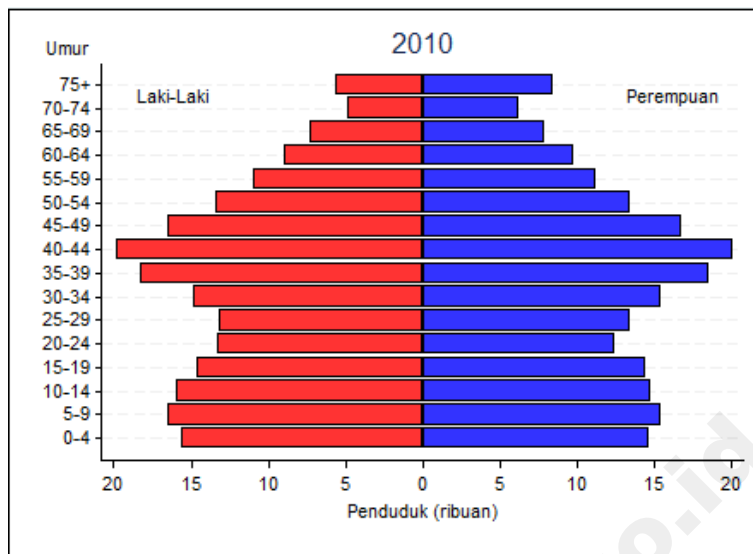
BALI

KABUPATEN/KOTA	2010	2011	2012	2013	2014	2015	2016	2017	2018	2019	2020
(1)	(2)	(3)	(4)	(5)	(6)	(7)	(8)	(9)	(10)	(11)	(12)
JEMBRANA	9,78	9,88	10,00	10,15	10,32	10,52	10,74	10,99	11,26	11,55	11,87
TABANAN	13,97	14,08	14,22	14,39	14,60	14,85	15,12	15,43	15,77	16,14	16,53
BADUNG	7,38	7,48	7,59	7,72	7,87	8,05	8,24	8,45	8,68	8,93	9,19
GIANYAR	10,90	11,02	11,17	11,33	11,53	11,76	12,00	12,28	12,58	12,91	13,26
KLUNGKUNG	13,99	14,11	14,27	14,45	14,67	14,91	15,19	15,50	15,85	16,22	16,62
BANGLI	12,38	12,51	12,65	12,83	13,03	13,27	13,53	13,82	14,15	14,50	14,87
KARANG ASEM	12,45	12,58	12,73	12,91	13,12	13,36	13,63	13,93	14,26	14,61	14,99
BULELENG	10,47	10,58	10,71	10,86	11,04	11,26	11,48	11,74	12,03	12,34	12,67
KOTA DENPASAR	4,48	4,55	4,62	4,71	4,82	4,94	5,06	5,20	5,36	5,52	5,70
JUMLAH	9,67	9,75	9,85	9,97	10,12	10,30	10,49	10,71	10,96	11,22	11,51

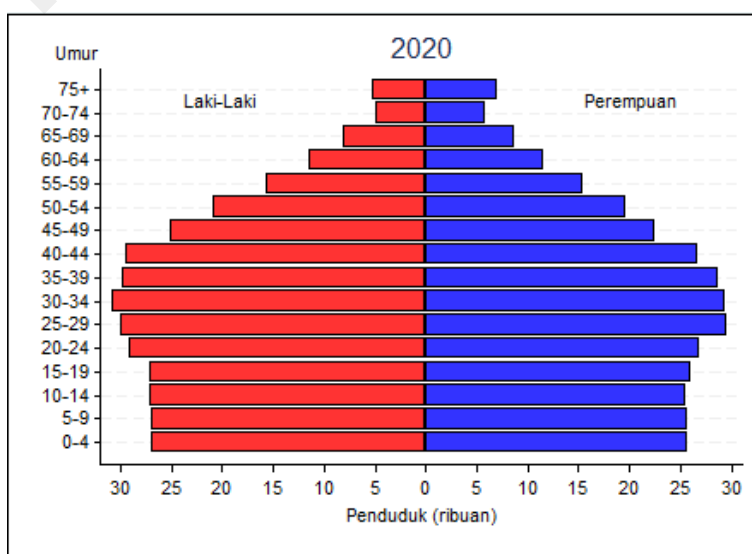
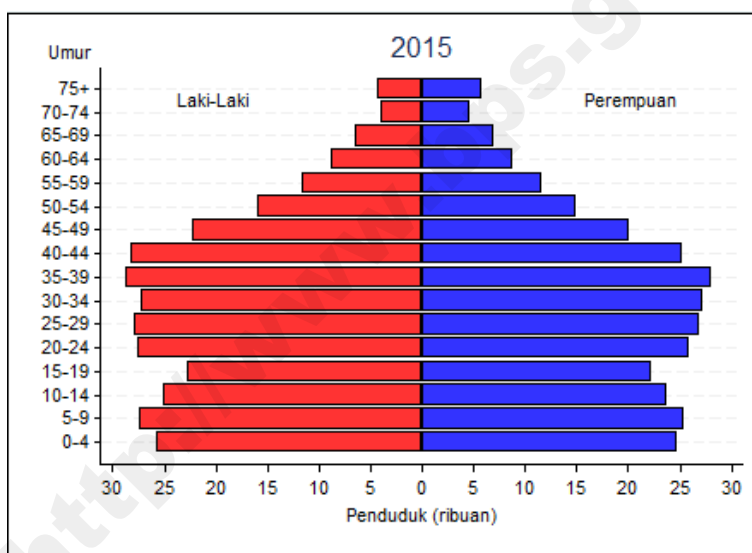
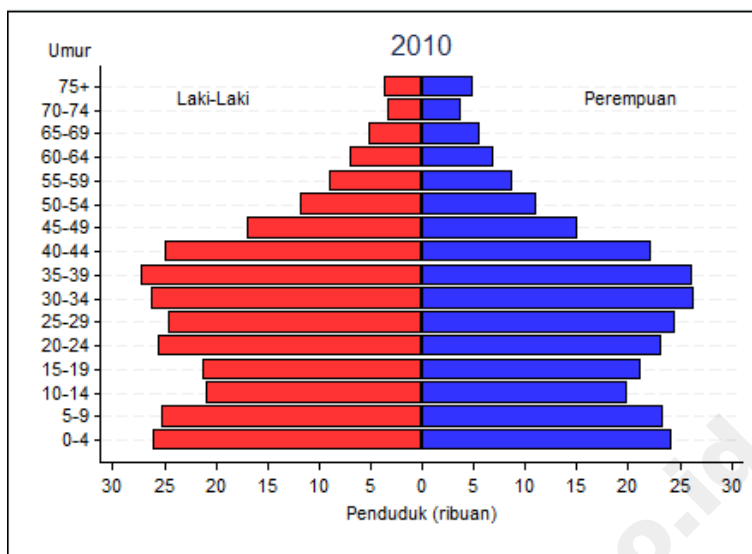
Gambar I.1
 PIRAMIDA PENDUDUK JEMBRANA
 TAHUN 2010 – 2020



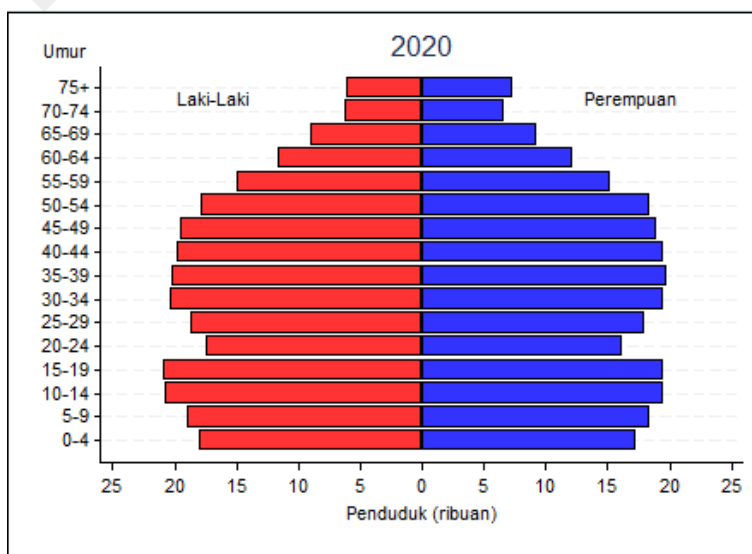
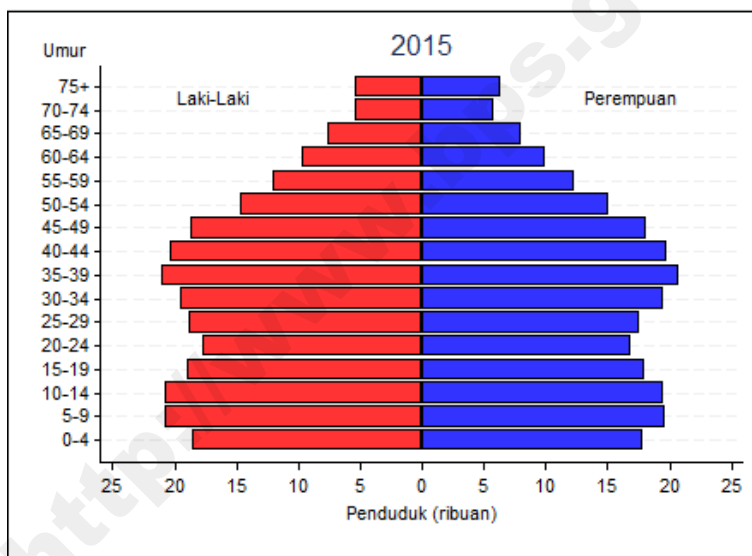
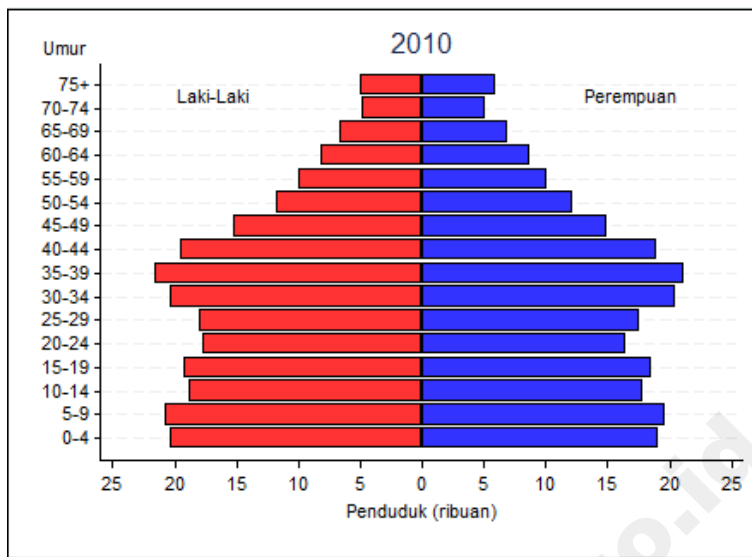
Gambar I.2
 PIRAMIDA PENDUDUK TABANAN
 TAHUN 2010 – 2020



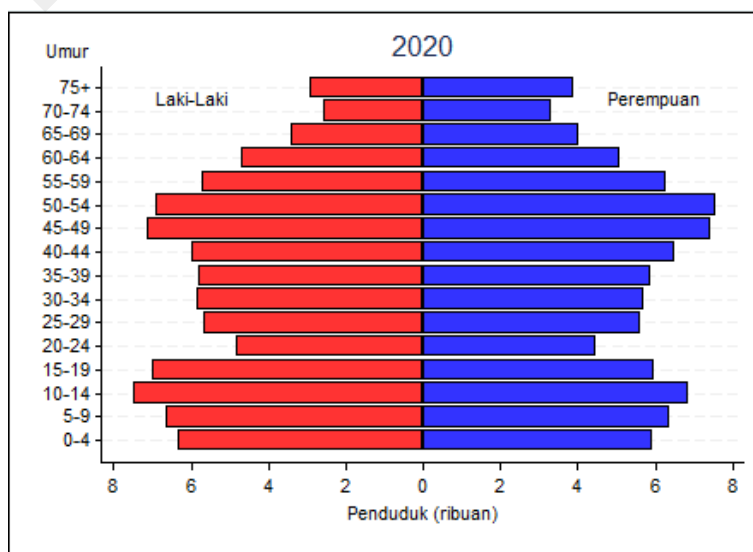
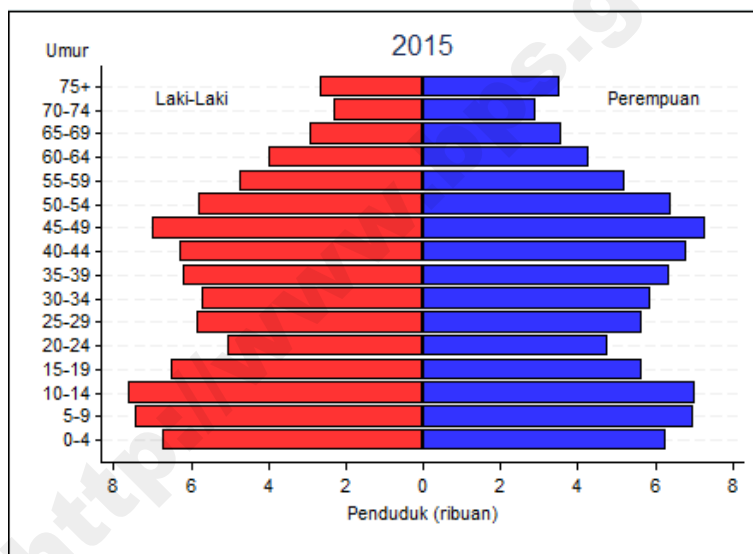
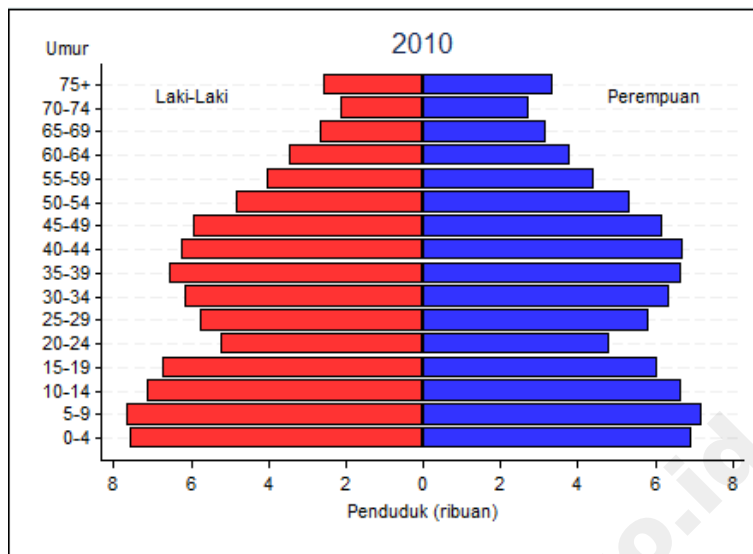
Gambar 1.3
 PIRAMIDA PENDUDUK BADUNG
 TAHUN 2010 – 2020



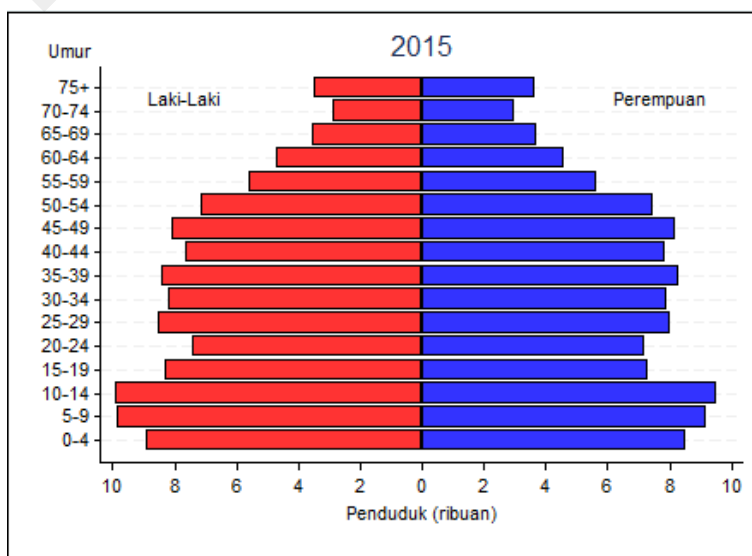
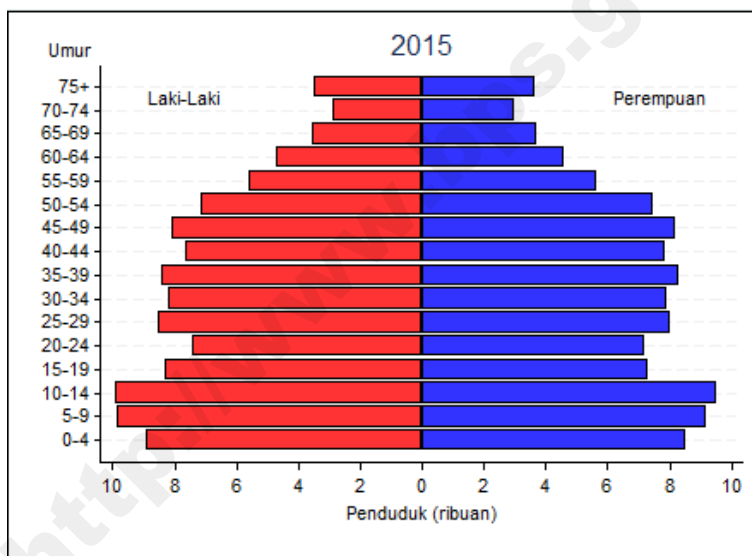
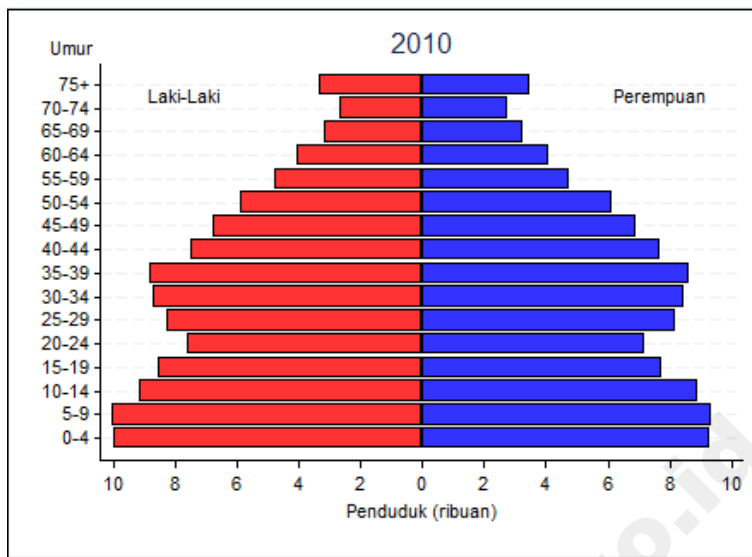
Gambar I.4
 PIRAMIDA PENDUDUK GIANYAR
 TAHUN 2010 – 2020



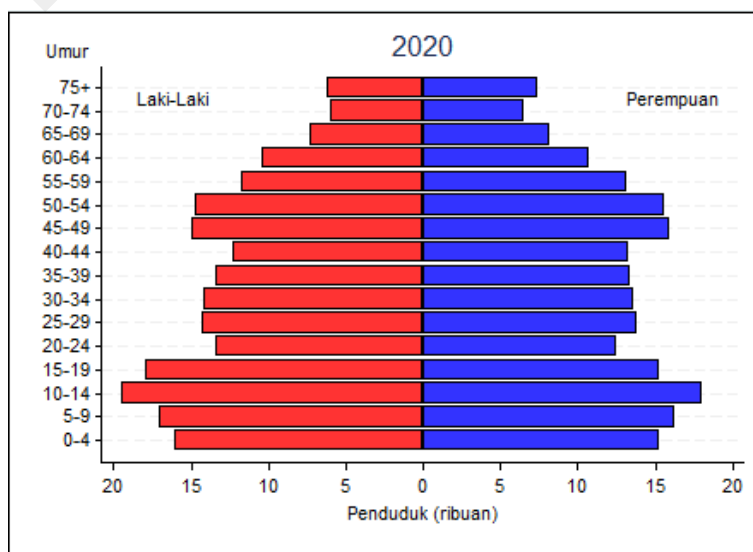
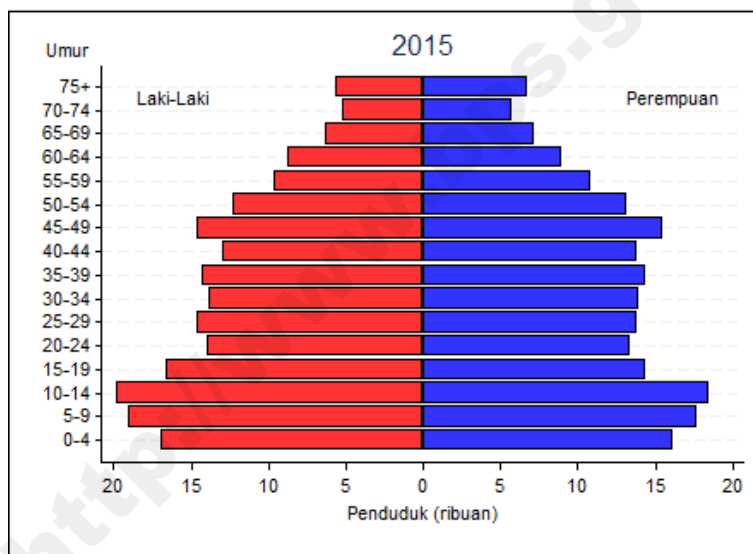
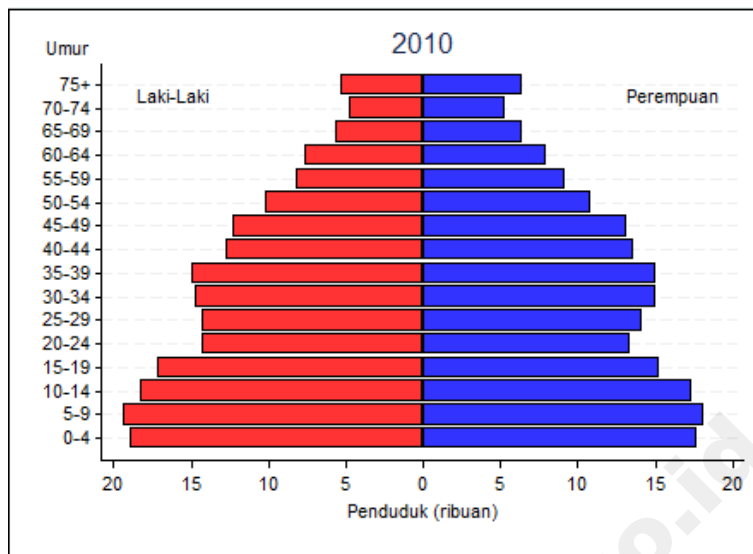
Gambar I.5
 PIRAMIDA PENDUDUK KLUNGKUNG
 TAHUN 2010 – 2020



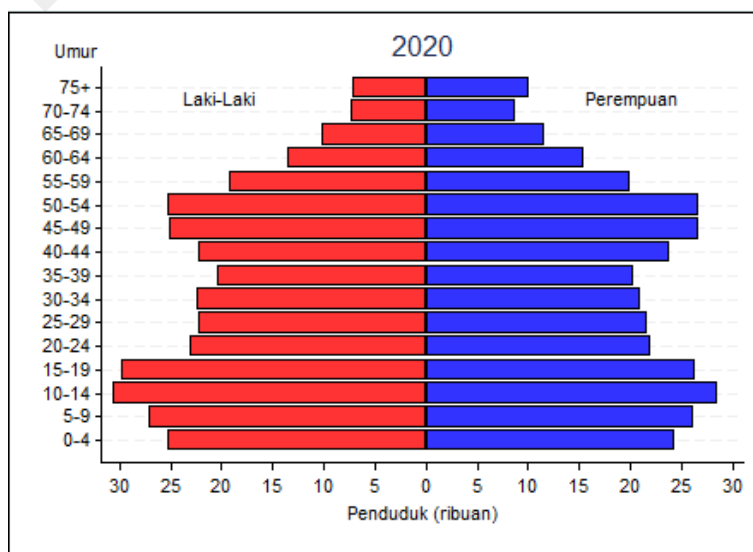
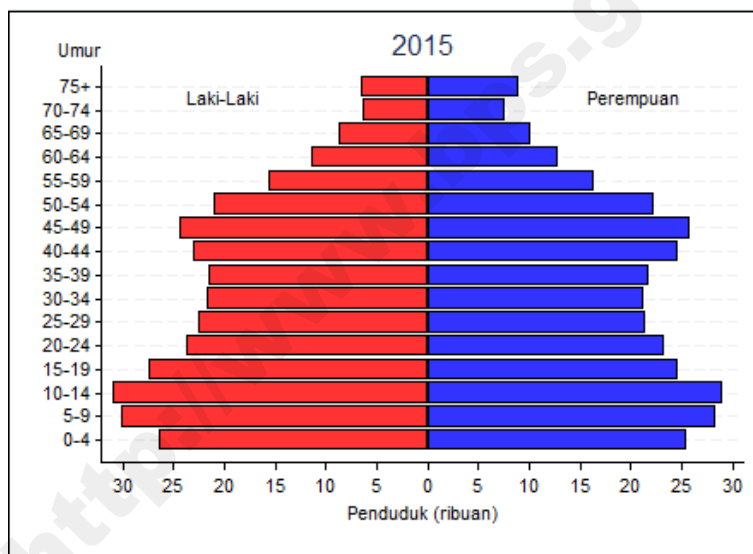
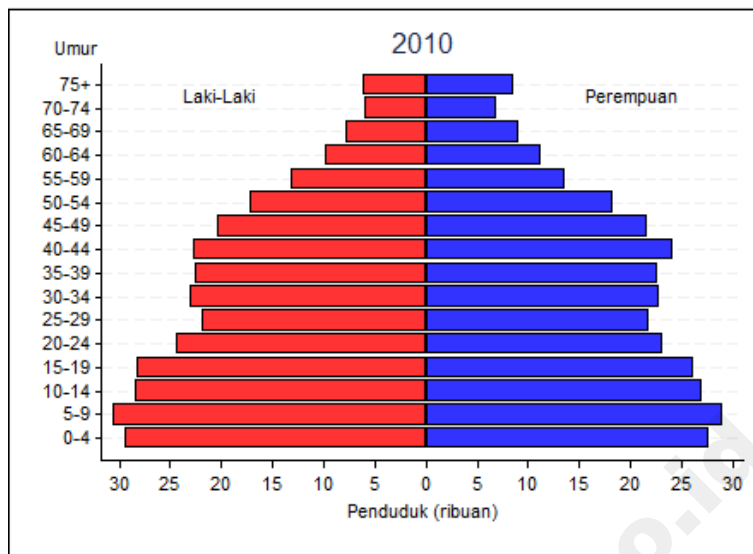
Gambar I.6
 PIRAMIDA PENDUDUK BANGLI
 TAHUN 2010 – 2020



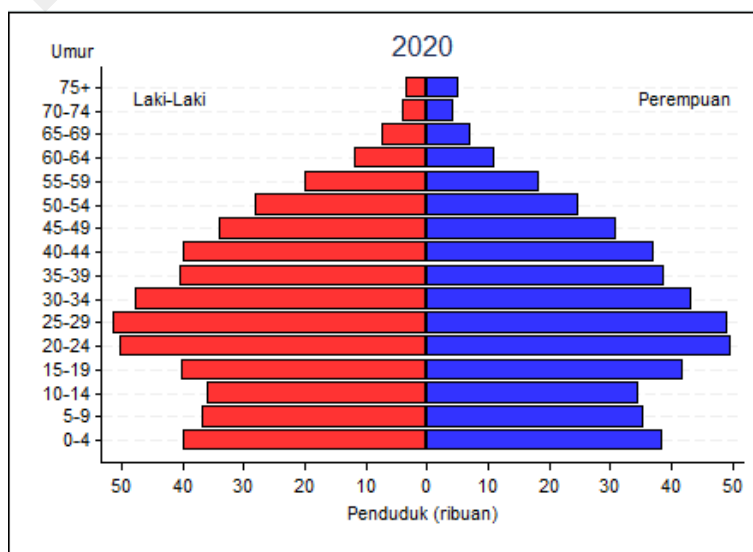
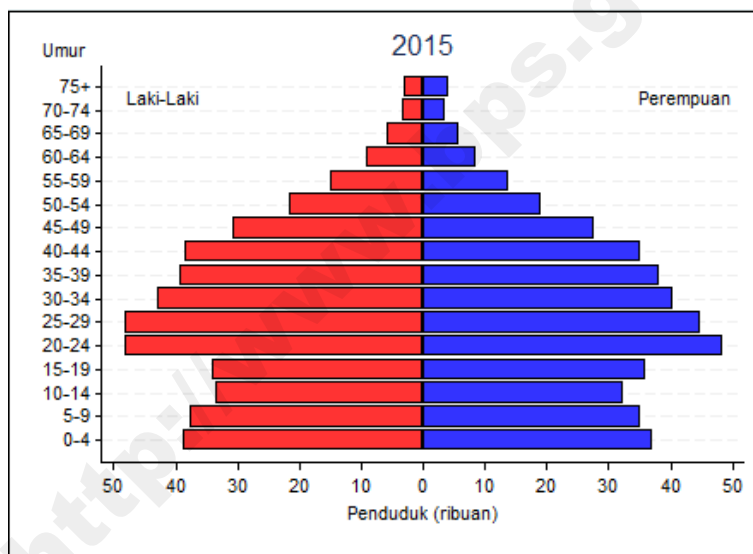
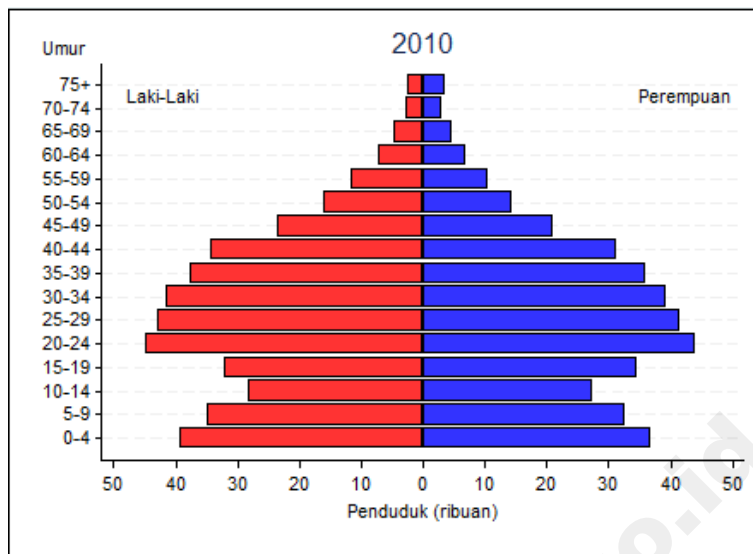
Gambar I.7
 PIRAMIDA PENDUDUK KARANG ASEM
 TAHUN 2010 – 2020



Gambar I.8
 PIRAMIDA PENDUDUK BULELENG
 TAHUN 2010 – 2020



Gambar I.9
 PIRAMIDA PENDUDUK KOTA DENPASAR
 TAHUN 2010 – 2020



Tabel II.1.1
PROYEKSI PENDUDUK
MENURUT JENIS KELAMIN DAN KELOMPOK UMUR
TAHUN 2010 - 2020

JEMBRANA

LAKI-LAKI

KELOMPOK UMUR	2010	2011	2012	2013	2014	2015	2016	2017	2018	2019	2020
(1)	(2)	(3)	(4)	(5)	(6)	(7)	(8)	(9)	(10)	(11)	(12)
0-4	11.507	11.217	10.939	10.680	10.474	10.292	10.202	10.100	10.018	9.926	9.835
5-9	12.199	12.301	12.299	12.261	12.162	11.999	11.725	11.438	11.193	10.985	10.805
10-14	11.405	11.522	11.741	11.955	12.195	12.374	12.503	12.504	12.493	12.396	12.238
15-19	10.983	10.851	10.752	10.664	10.607	10.678	10.800	10.993	11.208	11.426	11.593
20-24	8.803	8.827	8.824	8.788	8.725	8.597	8.498	8.404	8.335	8.275	8.320
25-29	9.296	9.296	9.328	9.388	9.489	9.551	9.597	9.594	9.574	9.509	9.379
30-34	10.097	9.929	9.795	9.664	9.567	9.514	9.529	9.562	9.640	9.741	9.810
35-39	10.508	10.457	10.372	10.270	10.147	10.037	9.890	9.754	9.643	9.545	9.496
40-44	10.772	10.867	10.950	11.000	11.020	10.988	10.953	10.862	10.776	10.647	10.537
45-49	9.627	10.102	10.570	10.998	11.306	11.512	11.646	11.742	11.830	11.862	11.841
50-54	7.611	7.869	8.137	8.420	8.815	9.266	9.748	10.202	10.640	10.942	11.153
55-59	6.014	6.219	6.430	6.643	6.868	7.095	7.354	7.607	7.889	8.263	8.696
60-64	4.305	4.387	4.512	4.660	4.816	4.967	5.151	5.330	5.522	5.716	5.913
65-69	3.147	3.206	3.264	3.328	3.422	3.546	3.625	3.732	3.865	4.003	4.134
70-74	2.012	2.052	2.091	2.126	2.157	2.180	2.233	2.278	2.332	2.405	2.498
75+	2.087	2.100	2.117	2.137	2.163	2.198	2.245	2.289	2.340	2.385	2.421
JUMLAH	130.373	131.202	132.121	132.982	133.933	134.794	135.699	136.391	137.298	138.026	138.669

Tabel II.1.2
PROYEKSI PENDUDUK
MENURUT JENIS KELAMIN DAN KELOMPOK UMUR
TAHUN 2010 - 2020

JEMBRANA

PEREMPUAN

KELOMPOK UMUR	2010	2011	2012	2013	2014	2015	2016	2017	2018	2019	2020
(1)	(2)	(3)	(4)	(5)	(6)	(7)	(8)	(9)	(10)	(11)	(12)
0-4	11.058	10.854	10.637	10.451	10.300	10.199	10.100	10.013	9.914	9.826	9.742
5-9	11.557	11.667	11.680	11.634	11.521	11.346	11.144	10.940	10.760	10.621	10.533
10-14	10.813	10.898	11.082	11.273	11.464	11.604	11.720	11.747	11.706	11.610	11.445
15-19	10.899	10.742	10.596	10.461	10.344	10.340	10.414	10.590	10.762	10.949	11.080
20-24	8.624	8.708	8.775	8.790	8.747	8.674	8.541	8.423	8.308	8.216	8.208
25-29	9.376	9.254	9.161	9.117	9.141	9.228	9.324	9.404	9.428	9.395	9.325
30-34	10.212	10.072	9.947	9.822	9.687	9.540	9.423	9.335	9.296	9.337	9.436
35-39	10.810	10.772	10.698	10.606	10.504	10.420	10.280	10.166	10.041	9.919	9.781
40-44	11.363	11.468	11.560	11.625	11.650	11.639	11.611	11.547	11.457	11.363	11.285
45-49	10.143	10.645	11.129	11.577	11.890	12.113	12.240	12.364	12.445	12.501	12.511
50-54	7.401	7.692	7.964	8.229	8.583	9.017	9.472	9.918	10.322	10.619	10.831
55-59	5.831	6.010	6.241	6.495	6.743	6.978	7.255	7.520	7.775	8.125	8.540
60-64	4.779	4.885	4.983	5.092	5.238	5.436	5.612	5.836	6.079	6.323	6.553
65-69	3.523	3.586	3.676	3.780	3.884	3.982	4.076	4.168	4.265	4.395	4.569
70-74	2.607	2.670	2.719	2.762	2.803	2.854	2.914	2.998	3.091	3.184	3.275
75+	3.228	3.243	3.271	3.311	3.363	3.418	3.495	3.577	3.641	3.725	3.815
JUMLAH	132.224	133.166	134.119	135.025	135.862	136.788	137.621	138.546	139.290	140.108	140.929

Tabel II.1.3
PROYEKSI PENDUDUK
MENURUT JENIS KELAMIN DAN KELOMPOK UMUR
TAHUN 2010 - 2020

JEMBRANA

LAKI-LAKI + PEREMPUAN

KELOMPOK UMUR	2010	2011	2012	2013	2014	2015	2016	2017	2018	2019	2020
(1)	(2)	(3)	(4)	(5)	(6)	(7)	(8)	(9)	(10)	(11)	(12)
0-4	22.565	22.071	21.576	21.131	20.774	20.491	20.302	20.113	19.932	19.752	19.577
5-9	23.756	23.968	23.979	23.895	23.683	23.345	22.869	22.378	21.953	21.606	21.338
10-14	22.218	22.420	22.823	23.228	23.659	23.978	24.223	24.251	24.199	24.006	23.683
15-19	21.882	21.593	21.348	21.125	20.951	21.018	21.214	21.583	21.970	22.375	22.673
20-24	17.427	17.535	17.599	17.578	17.472	17.271	17.039	16.827	16.643	16.491	16.528
25-29	18.672	18.550	18.489	18.505	18.630	18.779	18.921	18.998	19.002	18.904	18.704
30-34	20.309	20.001	19.742	19.486	19.254	19.054	18.952	18.897	18.936	19.078	19.246
35-39	21.318	21.229	21.070	20.876	20.651	20.457	20.170	19.920	19.684	19.464	19.277
40-44	22.135	22.335	22.510	22.625	22.670	22.627	22.564	22.409	22.233	22.010	21.822
45-49	19.770	20.747	21.699	22.575	23.196	23.625	23.886	24.106	24.275	24.363	24.352
50-54	15.012	15.561	16.101	16.649	17.398	18.283	19.220	20.120	20.962	21.561	21.984
55-59	11.845	12.229	12.671	13.138	13.611	14.073	14.609	15.127	15.664	16.388	17.236
60-64	9.084	9.272	9.495	9.752	10.054	10.403	10.763	11.166	11.601	12.039	12.466
65-69	6.670	6.792	6.940	7.108	7.306	7.528	7.701	7.900	8.130	8.398	8.703
70-74	4.619	4.722	4.810	4.888	4.960	5.034	5.147	5.276	5.423	5.589	5.773
75+	5.315	5.343	5.388	5.448	5.526	5.616	5.740	5.866	5.981	6.110	6.236
JUMLAH	262.597	264.368	266.240	268.007	269.795	271.582	273.320	274.937	276.588	278.134	279.598

Tabel II.2.1
PROYEKSI PENDUDUK
MENURUT JENIS KELAMIN DAN KELOMPOK UMUR
TAHUN 2010 - 2020

TABANAN

LAKI-LAKI

KELOMPOK UMUR	2010	2011	2012	2013	2014	2015	2016	2017	2018	2019	2020
(1)	(2)	(3)	(4)	(5)	(6)	(7)	(8)	(9)	(10)	(11)	(12)
0-4	15.631	15.225	14.809	14.438	14.118	13.854	13.692	13.547	13.393	13.237	13.100
5-9	16.474	16.598	16.553	16.477	16.296	16.056	15.642	15.250	14.877	14.562	14.307
10-14	15.895	16.045	16.305	16.580	16.862	17.087	17.215	17.205	17.133	16.956	16.722
15-19	14.656	14.467	14.296	14.161	14.045	14.118	14.238	14.483	14.718	14.966	15.166
20-24	13.256	13.283	13.244	13.170	13.038	12.834	12.642	12.493	12.354	12.234	12.285
25-29	13.221	13.210	13.222	13.288	13.389	13.461	13.484	13.473	13.400	13.275	13.077
30-34	14.839	14.581	14.345	14.135	13.950	13.853	13.838	13.875	13.942	14.053	14.140
35-39	18.256	18.150	17.957	17.753	17.492	17.280	16.974	16.730	16.486	16.277	16.178
40-44	19.817	19.976	20.076	20.139	20.116	20.032	19.910	19.729	19.508	19.226	19.005
45-49	16.466	17.262	18.016	18.719	19.185	19.509	19.679	19.829	19.909	19.914	19.858
50-54	13.433	13.879	14.316	14.788	15.437	16.208	17.000	17.779	18.482	18.960	19.303
55-59	11.007	11.370	11.728	12.098	12.470	12.866	13.297	13.744	14.207	14.845	15.604
60-64	8.923	9.084	9.318	9.608	9.901	10.199	10.546	10.906	11.262	11.626	12.013
65-69	7.259	7.387	7.500	7.638	7.829	8.102	8.262	8.498	8.774	9.062	9.350
70-74	4.832	4.921	5.004	5.080	5.137	5.187	5.294	5.399	5.514	5.669	5.880
75+	5.637	5.655	5.684	5.733	5.796	5.874	5.991	6.098	6.217	6.315	6.418
JUMLAH	209.602	211.093	212.373	213.805	215.061	216.520	217.704	219.038	220.176	221.177	222.406

Tabel II.2.2
PROYEKSI PENDUDUK
MENURUT JENIS KELAMIN DAN KELOMPOK UMUR
TAHUN 2010 - 2020

TABANAN

PEREMPUAN

KELOMPOK UMUR	2010	2011	2012	2013	2014	2015	2016	2017	2018	2019	2020
(1)	(2)	(3)	(4)	(5)	(6)	(7)	(8)	(9)	(10)	(11)	(12)
0-4	14.604	14.291	13.976	13.701	13.480	13.304	13.154	12.992	12.846	12.696	12.543
5-9	15.450	15.551	15.533	15.437	15.260	14.977	14.685	14.368	14.106	13.890	13.727
10-14	14.752	14.819	15.040	15.261	15.495	15.625	15.756	15.737	15.659	15.489	15.212
15-19	14.392	14.143	13.920	13.708	13.532	13.480	13.549	13.732	13.935	14.138	14.258
20-24	12.437	12.521	12.588	12.587	12.501	12.352	12.147	11.936	11.752	11.589	11.535
25-29	13.457	13.242	13.080	12.989	13.003	13.080	13.192	13.260	13.273	13.190	13.048
30-34	15.419	15.160	14.940	14.715	14.490	14.225	14.022	13.851	13.774	13.796	13.890
35-39	18.474	18.357	18.193	17.995	17.789	17.585	17.321	17.070	16.835	16.585	16.293
40-44	20.043	20.164	20.283	20.350	20.359	20.270	20.181	20.010	19.821	19.609	19.409
45-49	16.717	17.497	18.250	18.940	19.418	19.716	19.882	20.016	20.125	20.155	20.102
50-54	13.475	13.961	14.419	14.869	15.484	16.206	16.993	17.733	18.430	18.907	19.219
55-59	11.170	11.484	11.893	12.348	12.798	13.198	13.696	14.148	14.604	15.219	15.944
60-64	9.774	9.960	10.139	10.340	10.615	10.979	11.309	11.725	12.195	12.652	13.067
65-69	7.904	8.022	8.207	8.422	8.639	8.826	9.014	9.185	9.383	9.642	9.991
70-74	6.226	6.359	6.463	6.548	6.636	6.733	6.863	7.036	7.239	7.442	7.629
75+	8.435	8.465	8.524	8.615	8.719	8.841	9.021	9.197	9.357	9.533	9.721
JUMLAH	212.729	213.996	215.448	216.825	218.218	219.397	220.785	221.996	223.334	224.532	225.588

Tabel II.2.3
 PROYEKSI PENDUDUK
 MENURUT JENIS KELAMIN DAN KELOMPOK UMUR
 TAHUN 2010 - 2020

TABANAN

LAKI-LAKI + PEREMPUAN

KELOMPOK UMUR	2010	2011	2012	2013	2014	2015	2016	2017	2018	2019	2020
(1)	(2)	(3)	(4)	(5)	(6)	(7)	(8)	(9)	(10)	(11)	(12)
0-4	30.235	29.516	28.785	28.139	27.598	27.158	26.846	26.539	26.239	25.933	25.643
5-9	31.924	32.149	32.086	31.914	31.556	31.033	30.327	29.618	28.983	28.452	28.034
10-14	30.647	30.864	31.345	31.841	32.357	32.712	32.971	32.942	32.792	32.445	31.934
15-19	29.048	28.610	28.216	27.869	27.577	27.598	27.787	28.215	28.653	29.104	29.424
20-24	25.693	25.804	25.832	25.757	25.539	25.186	24.789	24.429	24.106	23.823	23.820
25-29	26.678	26.452	26.302	26.277	26.392	26.541	26.676	26.733	26.673	26.465	26.125
30-34	30.258	29.741	29.285	28.850	28.440	28.078	27.860	27.726	27.716	27.849	28.030
35-39	36.730	36.507	36.150	35.748	35.281	34.865	34.295	33.800	33.321	32.862	32.471
40-44	39.860	40.140	40.359	40.489	40.475	40.302	40.091	39.739	39.329	38.835	38.414
45-49	33.183	34.759	36.266	37.659	38.603	39.225	39.561	39.845	40.034	40.069	39.960
50-54	26.908	27.840	28.735	29.657	30.921	32.414	33.993	35.512	36.912	37.867	38.522
55-59	22.177	22.854	23.621	24.446	25.268	26.064	26.993	27.892	28.811	30.064	31.548
60-64	18.697	19.044	19.457	19.948	20.516	21.178	21.855	22.631	23.457	24.278	25.080
65-69	15.163	15.409	15.707	16.060	16.468	16.928	17.276	17.683	18.157	18.704	19.341
70-74	11.058	11.280	11.467	11.628	11.773	11.920	12.157	12.435	12.753	13.111	13.509
75+	14.072	14.120	14.208	14.348	14.515	14.715	15.012	15.295	15.574	15.848	16.139
JUMLAH	422.331	425.089	427.821	430.630	433.279	435.917	438.489	441.034	443.510	445.709	447.994

Tabel II.3.1
PROYEKSI PENDUDUK
MENURUT JENIS KELAMIN DAN KELOMPOK UMUR
TAHUN 2010 - 2020

BADUNG

LAKI-LAKI

KELOMPOK UMUR	2010	2011	2012	2013	2014	2015	2016	2017	2018	2019	2020
(1)	(2)	(3)	(4)	(5)	(6)	(7)	(8)	(9)	(10)	(11)	(12)
0-4	26.101	25.997	25.884	25.792	25.774	25.804	26.050	26.286	26.513	26.732	26.924
5-9	25.190	25.953	26.494	26.955	27.242	27.386	27.252	27.096	26.970	26.931	26.928
10-14	20.967	21.643	22.516	23.399	24.318	25.140	25.875	26.373	26.795	27.054	27.152
15-19	21.256	21.458	21.706	21.975	22.270	22.840	23.529	24.411	25.310	26.254	27.076
20-24	25.534	26.160	26.702	27.140	27.457	27.570	27.745	27.965	28.213	28.500	29.127
25-29	24.586	25.119	25.735	26.433	27.220	27.919	28.568	29.113	29.542	29.853	29.931
30-34	26.216	26.342	26.528	26.715	26.946	27.302	27.854	28.485	29.206	30.031	30.746
35-39	27.284	27.739	28.091	28.387	28.580	28.805	28.903	29.055	29.212	29.423	29.760
40-44	25.003	25.772	26.514	27.183	27.750	28.193	28.621	28.929	29.181	29.336	29.515
45-49	16.868	18.085	19.319	20.516	21.487	22.294	22.969	23.605	24.181	24.674	25.041
50-54	11.820	12.489	13.186	13.922	14.850	15.908	17.043	18.179	19.282	20.178	20.906
55-59	8.942	9.445	9.973	10.516	11.074	11.659	12.309	12.975	13.682	14.587	15.603
60-64	6.905	7.189	7.549	7.954	8.378	8.804	9.300	9.807	10.332	10.881	11.443
65-69	5.147	5.356	5.565	5.794	6.069	6.407	6.673	7.002	7.376	7.769	8.160
70-74	3.288	3.424	3.564	3.698	3.821	3.936	4.104	4.268	4.447	4.664	4.924
75+	3.710	3.809	3.917	4.043	4.172	4.318	4.487	4.674	4.846	5.032	5.198
JUMLAH	278.817	285.980	293.243	300.422	307.408	314.285	321.282	328.223	335.088	341.899	348.434

Tabel II.3.2
 PROYEKSI PENDUDUK
 MENURUT JENIS KELAMIN DAN KELOMPOK UMUR
 TAHUN 2010 - 2020

BADUNG

PEREMPUAN

KELOMPOK UMUR	2010	2011	2012	2013	2014	2015	2016	2017	2018	2019	2020
(1)	(2)	(3)	(4)	(5)	(6)	(7)	(8)	(9)	(10)	(11)	(12)
0-4	24.154	24.232	24.243	24.309	24.437	24.670	24.890	25.097	25.308	25.505	25.692
5-9	23.409	24.151	24.678	25.084	25.339	25.433	25.451	25.420	25.451	25.555	25.751
10-14	19.963	20.559	21.340	22.151	22.982	23.711	24.393	24.874	25.240	25.455	25.495
15-19	21.245	21.401	21.547	21.704	21.895	22.312	22.885	23.676	24.503	25.350	26.066
20-24	23.310	24.065	24.751	25.310	25.689	25.968	26.053	26.131	26.236	26.382	26.771
25-29	24.623	24.837	25.094	25.485	26.065	26.820	27.607	28.328	28.918	29.306	29.555
30-34	26.413	26.622	26.837	27.036	27.199	27.302	27.468	27.689	28.073	28.671	29.433
35-39	26.274	26.763	27.132	27.450	27.727	28.036	28.184	28.357	28.517	28.646	28.687
40-44	22.200	22.897	23.557	24.178	24.715	25.173	25.583	25.890	26.158	26.397	26.642
45-49	15.142	16.245	17.332	18.397	19.274	20.014	20.601	21.168	21.702	22.167	22.542
50-54	11.078	11.765	12.431	13.109	13.950	14.933	15.978	17.021	18.035	18.873	19.558
55-59	8.763	9.235	9.784	10.390	11.006	11.607	12.294	12.963	13.648	14.498	15.487
60-64	6.950	7.259	7.557	7.881	8.263	8.743	9.189	9.728	10.321	10.920	11.498
65-69	5.583	5.809	6.080	6.379	6.685	6.986	7.283	7.574	7.891	8.270	8.734
70-74	3.821	4.000	4.159	4.309	4.462	4.632	4.818	5.045	5.296	5.551	5.797
75+	4.949	5.084	5.246	5.413	5.600	5.804	6.055	6.290	6.536	6.782	7.061
JUMLAH	267.877	274.924	281.768	288.585	295.288	302.144	308.732	315.251	321.833	328.328	334.769

Tabel II.3.3
PROYEKSI PENDUDUK
MENURUT JENIS KELAMIN DAN KELOMPOK UMUR
TAHUN 2010 - 2020

BADUNG

LAKI-LAKI + PEREMPUAN

KELOMPOK UMUR	2010	2011	2012	2013	2014	2015	2016	2017	2018	2019	2020
(1)	(2)	(3)	(4)	(5)	(6)	(7)	(8)	(9)	(10)	(11)	(12)
0-4	50.255	50.229	50.127	50.101	50.211	50.474	50.940	51.383	51.821	52.237	52.616
5-9	48.599	50.104	51.172	52.039	52.581	52.819	52.703	52.516	52.421	52.486	52.679
10-14	40.930	42.202	43.856	45.550	47.300	48.851	50.268	51.247	52.035	52.509	52.647
15-19	42.501	42.859	43.253	43.679	44.165	45.152	46.414	48.087	49.813	51.604	53.142
20-24	48.844	50.225	51.453	52.450	53.146	53.538	53.798	54.096	54.449	54.882	55.898
25-29	49.209	49.956	50.829	51.918	53.285	54.739	56.175	57.441	58.460	59.159	59.486
30-34	52.629	52.964	53.365	53.751	54.145	54.604	55.322	56.174	57.279	58.702	60.179
35-39	53.558	54.502	55.223	55.837	56.307	56.841	57.087	57.412	57.729	58.069	58.447
40-44	47.203	48.669	50.071	51.361	52.465	53.366	54.204	54.819	55.339	55.733	56.157
45-49	32.010	34.330	36.651	38.913	40.761	42.308	43.570	44.773	45.883	46.841	47.583
50-54	22.898	24.254	25.617	27.031	28.800	30.841	33.021	35.200	37.317	39.051	40.464
55-59	17.705	18.680	19.757	20.906	22.080	23.266	24.603	25.938	27.330	29.085	31.090
60-64	13.855	14.448	15.106	15.835	16.641	17.547	18.489	19.535	20.653	21.801	22.941
65-69	10.730	11.165	11.645	12.173	12.754	13.393	13.956	14.576	15.267	16.039	16.894
70-74	7.109	7.424	7.723	8.007	8.283	8.568	8.922	9.313	9.743	10.215	10.721
75+	8.659	8.893	9.163	9.456	9.772	10.122	10.542	10.964	11.382	11.814	12.259
JUMLAH	546.694	560.904	575.011	589.007	602.696	616.429	630.014	643.474	656.921	670.227	683.203

Tabel II.4.1
PROYEKSI PENDUDUK
MENURUT JENIS KELAMIN DAN KELOMPOK UMUR
TAHUN 2010 - 2020

GIANYAR

LAKI-LAKI

KELOMPOK UMUR	2010	2011	2012	2013	2014	2015	2016	2017	2018	2019	2020
(1)	(2)	(3)	(4)	(5)	(6)	(7)	(8)	(9)	(10)	(11)	(12)
0-4	20.393	19.979	19.548	19.184	18.856	18.604	18.496	18.384	18.262	18.147	18.041
5-9	20.761	21.040	21.106	21.148	21.023	20.828	20.410	19.991	19.595	19.286	19.033
10-14	18.764	19.052	19.475	19.934	20.379	20.762	21.042	21.127	21.138	21.038	20.836
15-19	19.194	19.059	18.945	18.890	18.830	19.033	19.307	19.733	20.148	20.600	20.966
20-24	17.775	17.913	17.969	17.987	17.898	17.711	17.553	17.427	17.314	17.241	17.389
25-29	17.941	18.029	18.153	18.363	18.598	18.801	18.944	19.016	19.004	18.930	18.731
30-34	20.291	20.054	19.845	19.684	19.528	19.499	19.591	19.735	19.927	20.196	20.406
35-39	21.590	21.592	21.486	21.383	21.176	21.034	20.785	20.582	20.377	20.232	20.196
40-44	19.509	19.780	19.996	20.191	20.274	20.298	20.294	20.204	20.072	19.891	19.749
45-49	15.288	16.123	16.924	17.702	18.236	18.646	18.918	19.153	19.321	19.431	19.463
50-54	11.772	12.233	12.691	13.198	13.848	14.619	15.423	16.206	16.925	17.461	17.854
55-59	10.035	10.425	10.819	11.232	11.639	12.073	12.553	13.034	13.537	14.224	15.015
60-64	8.196	8.393	8.660	8.986	9.312	9.643	10.029	10.419	10.812	11.223	11.646
65-69	6.588	6.745	6.886	7.059	7.275	7.569	7.763	8.022	8.323	8.641	8.956
70-74	4.894	5.014	5.129	5.241	5.328	5.409	5.553	5.689	5.837	6.035	6.287
75+	5.029	5.077	5.135	5.211	5.297	5.397	5.525	5.659	5.791	5.915	6.037
JUMLAH	238.020	240.508	242.767	245.393	247.497	249.926	252.186	254.381	256.383	258.491	260.605

Tabel II.4.2
 PROYEKSI PENDUDUK
 MENURUT JENIS KELAMIN DAN KELOMPOK UMUR
 TAHUN 2010 - 2020

GIANYAR

PEREMPUAN

KELOMPOK UMUR	2010	2011	2012	2013	2014	2015	2016	2017	2018	2019	2020
(1)	(2)	(3)	(4)	(5)	(6)	(7)	(8)	(9)	(10)	(11)	(12)
0-4	19.055	18.777	18.480	18.218	18.036	17.910	17.794	17.676	17.568	17.444	17.328
5-9	19.625	19.888	19.992	19.980	19.875	19.624	19.340	19.027	18.775	18.574	18.456
10-14	17.809	18.016	18.398	18.775	19.182	19.467	19.725	19.813	19.817	19.690	19.450
15-19	18.555	18.358	18.182	18.005	17.887	17.926	18.108	18.452	18.821	19.184	19.455
20-24	16.456	16.686	16.880	16.972	16.964	16.868	16.666	16.469	16.299	16.147	16.160
25-29	17.590	17.426	17.315	17.288	17.414	17.625	17.868	18.066	18.175	18.147	18.051
30-34	20.515	20.311	20.144	19.953	19.768	19.521	19.339	19.205	19.191	19.313	19.553
35-39	21.175	21.185	21.129	21.019	20.907	20.795	20.586	20.404	20.225	20.016	19.771
40-44	18.952	19.200	19.434	19.609	19.739	19.777	19.790	19.731	19.645	19.528	19.437
45-49	14.894	15.695	16.475	17.194	17.738	18.117	18.367	18.591	18.786	18.906	18.960
50-54	12.162	12.686	13.188	13.673	14.328	15.090	15.903	16.687	17.434	17.967	18.363
55-59	10.079	10.435	10.873	11.355	11.839	12.287	12.813	13.311	13.812	14.458	15.235
60-64	8.643	8.869	9.085	9.317	9.620	10.013	10.368	10.808	11.299	11.779	12.235
65-69	6.968	7.119	7.333	7.568	7.809	8.027	8.239	8.442	8.666	8.948	9.324
70-74	5.152	5.299	5.420	5.521	5.629	5.749	5.892	6.077	6.291	6.496	6.687
75+	5.949	6.001	6.084	6.184	6.294	6.423	6.599	6.760	6.921	7.087	7.274
JUMLAH	233.579	235.951	238.412	240.631	243.029	245.219	247.397	249.519	251.725	253.684	255.739

Tabel II.4.3
PROYEKSI PENDUDUK
MENURUT JENIS KELAMIN DAN KELOMPOK UMUR
TAHUN 2010 - 2020

GIANYAR

LAKI-LAKI + PEREMPUAN

KELOMPOK UMUR	2010	2011	2012	2013	2014	2015	2016	2017	2018	2019	2020
(1)	(2)	(3)	(4)	(5)	(6)	(7)	(8)	(9)	(10)	(11)	(12)
0-4	39.448	38.756	38.028	37.402	36.892	36.514	36.290	36.060	35.830	35.591	35.369
5-9	40.386	40.928	41.098	41.128	40.898	40.452	39.750	39.018	38.370	37.860	37.489
10-14	36.573	37.068	37.873	38.709	39.561	40.229	40.767	40.940	40.955	40.728	40.286
15-19	37.749	37.417	37.127	36.895	36.717	36.959	37.415	38.185	38.969	39.784	40.421
20-24	34.231	34.599	34.849	34.959	34.862	34.579	34.219	33.896	33.613	33.388	33.549
25-29	35.531	35.455	35.468	35.651	36.012	36.426	36.812	37.082	37.179	37.077	36.782
30-34	40.806	40.365	39.989	39.637	39.296	39.020	38.930	38.940	39.118	39.509	39.959
35-39	42.765	42.777	42.615	42.402	42.083	41.829	41.371	40.986	40.602	40.248	39.967
40-44	38.461	38.980	39.430	39.800	40.013	40.075	40.084	39.935	39.717	39.419	39.186
45-49	30.182	31.818	33.399	34.896	35.974	36.763	37.285	37.744	38.107	38.337	38.423
50-54	23.934	24.919	25.879	26.871	28.176	29.709	31.326	32.893	34.359	35.428	36.217
55-59	20.114	20.860	21.692	22.587	23.478	24.360	25.366	26.345	27.349	28.682	30.250
60-64	16.839	17.262	17.745	18.303	18.932	19.656	20.397	21.227	22.111	23.002	23.881
65-69	13.556	13.864	14.219	14.627	15.084	15.596	16.002	16.464	16.989	17.589	18.280
70-74	10.046	10.313	10.549	10.762	10.957	11.158	11.445	11.766	12.128	12.531	12.974
75+	10.978	11.078	11.219	11.395	11.591	11.820	12.124	12.419	12.712	13.002	13.311
JUMLAH	471.599	476.459	481.179	486.024	490.526	495.145	499.583	503.900	508.108	512.175	516.344

Tabel II.5.1
PROYEKSI PENDUDUK
MENURUT JENIS KELAMIN DAN KELOMPOK UMUR
TAHUN 2010 - 2020

KLUNGKUNG

LAKI-LAKI

KELOMPOK UMUR	2010	2011	2012	2013	2014	2015	2016	2017	2018	2019	2020
(1)	(2)	(3)	(4)	(5)	(6)	(7)	(8)	(9)	(10)	(11)	(12)
0-4	7.581	7.384	7.179	7.006	6.858	6.716	6.648	6.562	6.495	6.421	6.351
5-9	7.664	7.720	7.697	7.670	7.592	7.465	7.283	7.084	6.919	6.776	6.654
10-14	7.112	7.178	7.292	7.423	7.556	7.641	7.711	7.688	7.665	7.589	7.480
15-19	6.755	6.669	6.586	6.531	6.482	6.503	6.568	6.666	6.784	6.900	6.987
20-24	5.231	5.242	5.224	5.199	5.152	5.061	4.994	4.923	4.874	4.830	4.846
25-29	5.739	5.735	5.735	5.770	5.820	5.839	5.857	5.840	5.815	5.763	5.674
30-34	6.139	6.032	5.931	5.850	5.778	5.727	5.729	5.732	5.767	5.816	5.847
35-39	6.551	6.513	6.441	6.375	6.287	6.196	6.097	5.994	5.914	5.843	5.803
40-44	6.234	6.284	6.312	6.339	6.337	6.298	6.269	6.198	6.136	6.049	5.976
45-49	5.922	6.210	6.475	6.735	6.911	7.012	7.083	7.121	7.160	7.163	7.141
50-54	4.811	4.971	5.123	5.298	5.538	5.801	6.094	6.358	6.617	6.792	6.911
55-59	4.045	4.179	4.307	4.448	4.589	4.725	4.890	5.043	5.220	5.459	5.732
60-64	3.479	3.541	3.630	3.748	3.867	3.975	4.114	4.246	4.391	4.534	4.681
65-69	2.641	2.687	2.727	2.780	2.852	2.946	3.007	3.086	3.192	3.297	3.400
70-74	2.130	2.170	2.204	2.239	2.268	2.285	2.336	2.376	2.429	2.500	2.591
75+	2.575	2.581	2.596	2.622	2.650	2.677	2.733	2.778	2.833	2.883	2.922
JUMLAH	84.609	85.096	85.459	86.033	86.537	86.867	87.413	87.695	88.211	88.615	88.996

Tabel II.5.2
 PROYEKSI PENDUDUK
 MENURUT JENIS KELAMIN DAN KELOMPOK UMUR
 TAHUN 2010 - 2020

KLUNGKUNG

PEREMPUAN

KELOMPOK UMUR	2010	2011	2012	2013	2014	2015	2016	2017	2018	2019	2020
(1)	(2)	(3)	(4)	(5)	(6)	(7)	(8)	(9)	(10)	(11)	(12)
0-4	6.931	6.790	6.629	6.495	6.382	6.306	6.225	6.148	6.067	5.993	5.923
5-9	7.238	7.293	7.270	7.221	7.132	7.004	6.860	6.709	6.576	6.469	6.395
10-14	6.675	6.713	6.798	6.894	6.994	7.058	7.108	7.097	7.048	6.968	6.845
15-19	6.083	5.982	5.876	5.781	5.701	5.681	5.701	5.775	5.846	5.928	5.979
20-24	4.837	4.874	4.893	4.890	4.851	4.797	4.709	4.628	4.547	4.480	4.461
25-29	5.828	5.741	5.661	5.619	5.618	5.656	5.699	5.725	5.722	5.680	5.622
30-34	6.384	6.283	6.181	6.087	5.989	5.881	5.791	5.716	5.675	5.680	5.720
35-39	6.694	6.658	6.586	6.510	6.429	6.362	6.258	6.166	6.070	5.976	5.873
40-44	6.750	6.798	6.825	6.846	6.843	6.816	6.778	6.717	6.643	6.569	6.503
45-49	6.200	6.495	6.765	7.018	7.187	7.301	7.357	7.402	7.428	7.437	7.416
50-54	5.338	5.533	5.707	5.881	6.119	6.410	6.713	7.004	7.269	7.451	7.575
55-59	4.425	4.554	4.708	4.884	5.058	5.218	5.409	5.586	5.756	5.992	6.283
60-64	3.811	3.888	3.952	4.027	4.131	4.272	4.401	4.558	4.731	4.906	5.071
65-69	3.204	3.255	3.324	3.408	3.495	3.572	3.647	3.717	3.790	3.895	4.034
70-74	2.722	2.782	2.822	2.859	2.896	2.939	2.994	3.068	3.153	3.237	3.319
75+	3.372	3.389	3.404	3.436	3.484	3.531	3.607	3.673	3.735	3.799	3.881
JUMLAH	86.492	87.028	87.401	87.856	88.309	88.804	89.257	89.689	90.056	90.460	90.900

Tabel II.5.3
 PROYEKSI PENDUDUK
 MENURUT JENIS KELAMIN DAN KELOMPOK UMUR
 TAHUN 2010 - 2020

KLUNGKUNG

LAKI-LAKI + PEREMPUAN

KELOMPOK UMUR	2010	2011	2012	2013	2014	2015	2016	2017	2018	2019	2020
(1)	(2)	(3)	(4)	(5)	(6)	(7)	(8)	(9)	(10)	(11)	(12)
0-4	14.512	14.174	13.808	13.501	13.240	13.022	12.873	12.710	12.562	12.414	12.274
5-9	14.902	15.013	14.967	14.891	14.724	14.469	14.143	13.793	13.495	13.245	13.049
10-14	13.787	13.891	14.090	14.317	14.550	14.699	14.819	14.785	14.713	14.557	14.325
15-19	12.838	12.651	12.462	12.312	12.183	12.184	12.269	12.441	12.630	12.828	12.966
20-24	10.068	10.116	10.117	10.089	10.003	9.858	9.703	9.551	9.421	9.310	9.307
25-29	11.567	11.476	11.396	11.389	11.438	11.495	11.556	11.565	11.537	11.443	11.296
30-34	12.523	12.315	12.112	11.937	11.767	11.608	11.520	11.448	11.442	11.496	11.567
35-39	13.245	13.171	13.027	12.885	12.716	12.558	12.355	12.160	11.984	11.819	11.676
40-44	12.984	13.082	13.137	13.185	13.180	13.114	13.047	12.915	12.779	12.618	12.479
45-49	12.122	12.705	13.240	13.753	14.098	14.313	14.440	14.523	14.588	14.600	14.557
50-54	10.149	10.504	10.830	11.179	11.657	12.211	12.807	13.362	13.886	14.243	14.486
55-59	8.470	8.733	9.015	9.332	9.647	9.943	10.299	10.629	10.976	11.451	12.015
60-64	7.290	7.429	7.582	7.775	7.998	8.247	8.515	8.804	9.122	9.440	9.752
65-69	5.845	5.942	6.051	6.188	6.347	6.518	6.654	6.803	6.982	7.192	7.434
70-74	4.852	4.952	5.026	5.098	5.164	5.224	5.330	5.444	5.582	5.737	5.910
75+	5.947	5.970	6.000	6.058	6.134	6.208	6.340	6.451	6.568	6.682	6.803
JUMLAH	171.101	172.124	172.860	173.889	174.846	175.671	176.670	177.384	178.267	179.075	179.896

Tabel II.6.1
PROYEKSI PENDUDUK
MENURUT JENIS KELAMIN DAN KELOMPOK UMUR
TAHUN 2010 - 2020

BANGLI

LAKI-LAKI

KELOMPOK UMUR	2010	2011	2012	2013	2014	2015	2016	2017	2018	2019	2020
(1)	(2)	(3)	(4)	(5)	(6)	(7)	(8)	(9)	(10)	(11)	(12)
0-4	9.973	9.732	9.482	9.248	9.071	8.909	8.807	8.735	8.636	8.547	8.467
5-9	10.027	10.121	10.111	10.068	9.989	9.851	9.598	9.382	9.151	8.971	8.823
10-14	9.163	9.268	9.432	9.596	9.789	9.929	10.005	10.025	9.981	9.893	9.766
15-19	8.547	8.452	8.367	8.291	8.248	8.299	8.370	8.537	8.675	8.833	8.959
20-24	7.594	7.623	7.613	7.573	7.520	7.409	7.301	7.233	7.153	7.092	7.129
25-29	8.287	8.296	8.315	8.360	8.452	8.505	8.521	8.536	8.490	8.420	8.303
30-34	8.737	8.601	8.476	8.355	8.272	8.223	8.214	8.256	8.296	8.375	8.433
35-39	8.830	8.796	8.717	8.622	8.519	8.424	8.276	8.180	8.059	7.968	7.928
40-44	7.482	7.556	7.607	7.633	7.649	7.623	7.578	7.529	7.443	7.346	7.269
45-49	6.787	7.128	7.451	7.744	7.963	8.106	8.177	8.261	8.293	8.307	8.291
50-54	5.867	6.072	6.273	6.484	6.790	7.135	7.484	7.847	8.157	8.381	8.539
55-59	4.765	4.932	5.095	5.258	5.437	5.615	5.803	6.014	6.217	6.504	6.844
60-64	4.065	4.147	4.261	4.394	4.542	4.684	4.843	5.021	5.185	5.360	5.544
65-69	3.154	3.215	3.270	3.330	3.425	3.546	3.617	3.731	3.852	3.983	4.114
70-74	2.671	2.725	2.775	2.817	2.859	2.889	2.950	3.015	3.080	3.171	3.293
75+	3.322	3.338	3.366	3.398	3.441	3.488	3.556	3.633	3.697	3.765	3.827
JUMLAH	109.271	110.002	110.611	111.171	111.966	112.635	113.100	113.935	114.365	114.916	115.529

Tabel II.6.2
PROYEKSI PENDUDUK
MENURUT JENIS KELAMIN DAN KELOMPOK UMUR
TAHUN 2010 - 2020

BANGLI

PEREMPUAN

KELOMPOK UMUR	2010	2011	2012	2013	2014	2015	2016	2017	2018	2019	2020
(1)	(2)	(3)	(4)	(5)	(6)	(7)	(8)	(9)	(10)	(11)	(12)
0-4	9.303	9.113	8.931	8.776	8.637	8.544	8.463	8.362	8.280	8.196	8.109
5-9	9.378	9.448	9.455	9.421	9.315	9.161	9.004	8.809	8.664	8.541	8.454
10-14	8.910	8.960	9.112	9.270	9.414	9.517	9.615	9.607	9.572	9.483	9.331
15-19	7.745	7.620	7.512	7.415	7.321	7.304	7.358	7.456	7.577	7.698	7.775
20-24	7.206	7.263	7.317	7.334	7.287	7.216	7.108	6.988	6.887	6.805	6.785
25-29	8.168	8.044	7.962	7.924	7.932	7.997	8.084	8.127	8.146	8.112	8.038
30-34	8.489	8.356	8.251	8.148	8.023	7.889	7.791	7.697	7.660	7.681	7.748
35-39	8.628	8.583	8.522	8.450	8.358	8.281	8.173	8.055	7.958	7.849	7.723
40-44	7.694	7.751	7.809	7.856	7.862	7.844	7.825	7.760	7.700	7.628	7.562
45-49	6.896	7.226	7.553	7.858	8.057	8.197	8.286	8.343	8.399	8.426	8.418
50-54	6.140	6.370	6.592	6.813	7.098	7.444	7.823	8.168	8.499	8.733	8.891
55-59	4.741	4.878	5.064	5.270	5.464	5.648	5.872	6.069	6.272	6.547	6.868
60-64	4.064	4.146	4.227	4.319	4.436	4.598	4.747	4.923	5.128	5.331	5.514
65-69	3.270	3.324	3.406	3.506	3.597	3.682	3.769	3.839	3.926	4.042	4.195
70-74	2.752	2.814	2.866	2.911	2.951	3.002	3.065	3.148	3.244	3.341	3.425
75+	3.456	3.476	3.501	3.547	3.590	3.653	3.736	3.808	3.884	3.967	4.060
JUMLAH	106.840	107.372	108.080	108.818	109.342	109.977	110.719	111.159	111.796	112.380	112.896

Tabel II.6.3
PROYEKSI PENDUDUK
MENURUT JENIS KELAMIN DAN KELOMPOK UMUR
TAHUN 2010 - 2020

BANGLI

LAKI-LAKI + PEREMPUAN

KELOMPOK UMUR	2010	2011	2012	2013	2014	2015	2016	2017	2018	2019	2020
(1)	(2)	(3)	(4)	(5)	(6)	(7)	(8)	(9)	(10)	(11)	(12)
0-4	19.276	18.845	18.413	18.024	17.708	17.453	17.270	17.097	16.916	16.743	16.576
5-9	19.405	19.569	19.566	19.489	19.304	19.012	18.602	18.191	17.815	17.512	17.277
10-14	18.073	18.228	18.544	18.866	19.203	19.446	19.620	19.632	19.553	19.376	19.097
15-19	16.292	16.072	15.879	15.706	15.569	15.603	15.728	15.993	16.252	16.531	16.734
20-24	14.800	14.886	14.930	14.907	14.807	14.625	14.409	14.221	14.040	13.897	13.914
25-29	16.455	16.340	16.277	16.284	16.384	16.502	16.605	16.663	16.636	16.532	16.341
30-34	17.226	16.957	16.727	16.503	16.295	16.112	16.005	15.953	15.956	16.056	16.181
35-39	17.458	17.379	17.239	17.072	16.877	16.705	16.449	16.235	16.017	15.817	15.651
40-44	15.176	15.307	15.416	15.489	15.511	15.467	15.403	15.289	15.143	14.974	14.831
45-49	13.683	14.354	15.004	15.602	16.020	16.303	16.463	16.604	16.692	16.733	16.709
50-54	12.007	12.442	12.865	13.297	13.888	14.579	15.307	16.015	16.656	17.114	17.430
55-59	9.506	9.810	10.159	10.528	10.901	11.263	11.675	12.083	12.489	13.051	13.712
60-64	8.129	8.293	8.488	8.713	8.978	9.282	9.590	9.944	10.313	10.691	11.058
65-69	6.424	6.539	6.676	6.836	7.022	7.228	7.386	7.570	7.778	8.025	8.309
70-74	5.423	5.539	5.641	5.728	5.810	5.891	6.015	6.163	6.324	6.512	6.718
75+	6.778	6.814	6.867	6.945	7.031	7.141	7.292	7.441	7.581	7.732	7.887
JUMLAH	216.111	217.374	218.691	219.989	221.308	222.612	223.819	225.094	226.161	227.296	228.425

Tabel II.7.1
 PROYEKSI PENDUDUK
 MENURUT JENIS KELAMIN DAN KELOMPOK UMUR
 TAHUN 2010 - 2020

KARANG ASEM

LAKI-LAKI

KELOMPOK UMUR	2010	2011	2012	2013	2014	2015	2016	2017	2018	2019	2020
(1)	(2)	(3)	(4)	(5)	(6)	(7)	(8)	(9)	(10)	(11)	(12)
0-4	18.970	18.501	18.034	17.587	17.229	16.912	16.741	16.569	16.409	16.222	16.069
5-9	19.396	19.567	19.556	19.473	19.292	19.015	18.552	18.094	17.681	17.313	17.027
10-14	18.307	18.504	18.844	19.169	19.530	19.794	19.974	19.971	19.921	19.723	19.468
15-19	17.144	16.945	16.779	16.628	16.520	16.612	16.779	17.075	17.381	17.679	17.933
20-24	14.330	14.375	14.363	14.288	14.172	13.951	13.768	13.611	13.482	13.355	13.423
25-29	14.263	14.270	14.311	14.388	14.524	14.606	14.654	14.647	14.593	14.462	14.260
30-34	14.720	14.484	14.278	14.074	13.916	13.824	13.830	13.871	13.963	14.079	14.177
35-39	14.972	14.905	14.776	14.615	14.424	14.254	14.023	13.828	13.648	13.482	13.411
40-44	12.699	12.817	12.908	12.953	12.963	12.911	12.852	12.742	12.620	12.443	12.310
45-49	12.245	12.856	13.442	13.973	14.348	14.596	14.744	14.861	14.947	14.955	14.928
50-54	10.167	10.518	10.871	11.235	11.748	12.339	12.961	13.560	14.121	14.491	14.765
55-59	8.208	8.490	8.776	9.057	9.350	9.651	9.990	10.330	10.697	11.182	11.762
60-64	7.647	7.796	8.014	8.265	8.535	8.794	9.105	9.419	9.745	10.062	10.408
65-69	5.634	5.739	5.839	5.949	6.109	6.324	6.458	6.646	6.874	7.101	7.333
70-74	4.820	4.916	5.009	5.088	5.154	5.205	5.322	5.429	5.553	5.711	5.931
75+	5.374	5.401	5.444	5.489	5.557	5.635	5.748	5.862	5.984	6.079	6.189
JUMLAH	198.896	200.084	201.244	202.231	203.371	204.423	205.501	206.515	207.619	208.339	209.394

Tabel II.7.2
 PROYEKSI PENDUDUK
 MENURUT JENIS KELAMIN DAN KELOMPOK UMUR
 TAHUN 2010 - 2020

KARANG ASEM

PEREMPUAN

KELOMPOK UMUR	2010	2011	2012	2013	2014	2015	2016	2017	2018	2019	2020
(1)	(2)	(3)	(4)	(5)	(6)	(7)	(8)	(9)	(10)	(11)	(12)
0-4	17.667	17.306	16.930	16.615	16.360	16.173	15.991	15.814	15.632	15.473	15.298
5-9	18.205	18.342	18.324	18.231	18.039	17.730	17.390	17.032	16.717	16.486	16.304
10-14	17.388	17.487	17.751	18.031	18.324	18.514	18.668	18.667	18.569	18.393	18.078
15-19	15.303	15.050	14.814	14.599	14.420	14.381	14.455	14.662	14.871	15.111	15.242
20-24	13.379	13.488	13.564	13.575	13.495	13.358	13.133	12.920	12.716	12.559	12.509
25-29	14.119	13.905	13.737	13.652	13.676	13.780	13.904	13.992	14.002	13.936	13.797
30-34	15.038	14.799	14.592	14.387	14.178	13.938	13.743	13.587	13.506	13.546	13.650
35-39	15.003	14.922	14.795	14.649	14.493	14.351	14.140	13.948	13.754	13.567	13.339
40-44	13.616	13.715	13.799	13.860	13.875	13.839	13.783	13.677	13.544	13.417	13.292
45-49	13.120	13.744	14.345	14.902	15.290	15.548	15.687	15.809	15.890	15.937	15.905
50-54	10.872	11.275	11.651	12.025	12.535	13.141	13.785	14.400	14.962	15.373	15.637
55-59	9.157	9.426	9.764	10.143	10.522	10.868	11.278	11.661	12.036	12.562	13.174
60-64	7.988	8.147	8.296	8.469	8.697	9.010	9.287	9.638	10.020	10.414	10.763
65-69	6.443	6.550	6.702	6.884	7.065	7.232	7.389	7.538	7.702	7.926	8.217
70-74	5.252	5.372	5.461	5.538	5.616	5.711	5.822	5.979	6.156	6.335	6.490
75+	6.363	6.387	6.431	6.514	6.595	6.705	6.847	6.983	7.104	7.249	7.401
JUMLAH	198.913	199.915	200.956	202.074	203.180	204.279	205.302	206.307	207.181	208.284	209.096

Tabel II.7.3
PROYEKSI PENDUDUK
MENURUT JENIS KELAMIN DAN KELOMPOK UMUR
TAHUN 2010 - 2020

KARANG ASEM

LAKI-LAKI + PEREMPUAN

KELOMPOK UMUR	2010	2011	2012	2013	2014	2015	2016	2017	2018	2019	2020
(1)	(2)	(3)	(4)	(5)	(6)	(7)	(8)	(9)	(10)	(11)	(12)
0-4	36.637	35.807	34.964	34.202	33.589	33.085	32.732	32.383	32.041	31.695	31.367
5-9	37.601	37.909	37.880	37.704	37.331	36.745	35.942	35.126	34.398	33.799	33.331
10-14	35.695	35.991	36.595	37.200	37.854	38.308	38.642	38.638	38.490	38.116	37.546
15-19	32.447	31.995	31.593	31.227	30.940	30.993	31.234	31.737	32.252	32.790	33.175
20-24	27.709	27.863	27.927	27.863	27.667	27.309	26.901	26.531	26.198	25.914	25.932
25-29	28.382	28.175	28.048	28.040	28.200	28.386	28.558	28.639	28.595	28.398	28.057
30-34	29.758	29.283	28.870	28.461	28.094	27.762	27.573	27.458	27.469	27.625	27.827
35-39	29.975	29.827	29.571	29.264	28.917	28.605	28.163	27.776	27.402	27.049	26.750
40-44	26.315	26.532	26.707	26.813	26.838	26.750	26.635	26.419	26.164	25.860	25.602
45-49	25.365	26.600	27.787	28.875	29.638	30.144	30.431	30.670	30.837	30.892	30.833
50-54	21.039	21.793	22.522	23.260	24.283	25.480	26.746	27.960	29.083	29.864	30.402
55-59	17.365	17.916	18.540	19.200	19.872	20.519	21.268	21.991	22.733	23.744	24.936
60-64	15.635	15.943	16.310	16.734	17.232	17.804	18.392	19.057	19.765	20.476	21.171
65-69	12.077	12.289	12.541	12.833	13.174	13.556	13.847	14.184	14.576	15.027	15.550
70-74	10.072	10.288	10.470	10.626	10.770	10.916	11.144	11.408	11.709	12.046	12.421
75+	11.737	11.788	11.875	12.003	12.152	12.340	12.595	12.845	13.088	13.328	13.590
JUMLAH	397.809	399.999	402.200	404.305	406.551	408.702	410.803	412.822	414.800	416.623	418.490

Tabel II.8.1
PROYEKSI PENDUDUK
MENURUT JENIS KELAMIN DAN KELOMPOK UMUR
TAHUN 2010 - 2020

BULELENG

LAKI-LAKI

KELOMPOK UMUR	2010	2011	2012	2013	2014	2015	2016	2017	2018	2019	2020
(1)	(2)	(3)	(4)	(5)	(6)	(7)	(8)	(9)	(10)	(11)	(12)
0-4	29.503	28.786	28.077	27.434	26.893	26.425	26.182	25.942	25.695	25.457	25.238
5-9	30.542	30.824	30.824	30.754	30.489	30.080	29.377	28.684	28.033	27.510	27.075
10-14	28.457	28.773	29.321	29.881	30.464	30.911	31.220	31.248	31.176	30.933	30.557
15-19	28.229	27.914	27.659	27.460	27.299	27.480	27.781	28.301	28.816	29.372	29.818
20-24	24.332	24.420	24.416	24.334	24.151	23.802	23.507	23.265	23.050	22.883	23.016
25-29	21.958	21.976	22.054	22.215	22.440	22.590	22.684	22.699	22.622	22.464	22.168
30-34	23.045	22.682	22.376	22.098	21.863	21.742	21.770	21.861	22.010	22.240	22.414
35-39	22.585	22.492	22.312	22.109	21.836	21.600	21.271	20.997	20.730	20.520	20.429
40-44	22.657	22.876	23.053	23.178	23.209	23.143	23.058	22.884	22.671	22.397	22.179
45-49	20.340	21.363	22.353	23.279	23.917	24.356	24.627	24.851	24.999	25.066	25.040
50-54	17.272	17.877	18.489	19.142	20.031	21.061	22.142	23.191	24.155	24.841	25.333
55-59	13.234	13.698	14.166	14.645	15.132	15.634	16.198	16.768	17.365	18.193	19.154
60-64	9.832	10.028	10.314	10.657	11.011	11.356	11.772	12.191	12.614	13.054	13.512
65-69	7.780	7.931	8.073	8.241	8.467	8.775	8.968	9.240	9.560	9.895	10.228
70-74	5.939	6.058	6.178	6.285	6.372	6.441	6.592	6.732	6.888	7.099	7.378
75+	6.165	6.193	6.244	6.314	6.396	6.493	6.631	6.768	6.905	7.035	7.165
JUMLAH	311.870	313.891	315.909	318.026	319.970	321.889	323.780	325.622	327.289	328.959	330.704

Tabel II.8.2
 PROYEKSI PENDUDUK
 MENURUT JENIS KELAMIN DAN KELOMPOK UMUR
 TAHUN 2010 - 2020

45

BULELENG											PEREMPUAN
KELOMPOK UMUR	2010	2011	2012	2013	2014	2015	2016	2017	2018	2019	2020
(1)	(2)	(3)	(4)	(5)	(6)	(7)	(8)	(9)	(10)	(11)	(12)
0-4	27.771	27.248	26.681	26.194	25.821	25.554	25.303	25.036	24.802	24.561	24.324
5-9	28.990	29.253	29.259	29.118	28.844	28.386	27.879	27.319	26.871	26.508	26.262
10-14	27.054	27.252	27.689	28.141	28.630	28.956	29.243	29.259	29.167	28.902	28.461
15-19	26.147	25.759	25.382	25.030	24.751	24.719	24.885	25.258	25.677	26.100	26.379
20-24	23.239	23.461	23.616	23.646	23.530	23.315	22.960	22.601	22.293	22.026	21.982
25-29	21.846	21.552	21.313	21.193	21.255	21.440	21.662	21.813	21.872	21.779	21.599
30-34	22.904	22.579	22.282	21.980	21.684	21.338	21.063	20.835	20.748	20.819	21.015
35-39	22.656	22.571	22.398	22.189	21.978	21.786	21.493	21.220	20.964	20.690	20.377
40-44	24.160	24.373	24.549	24.667	24.726	24.684	24.618	24.446	24.259	24.045	23.857
45-49	21.702	22.770	23.787	24.724	25.398	25.855	26.121	26.342	26.529	26.623	26.616
50-54	18.325	19.029	19.684	20.329	21.212	22.263	23.385	24.448	25.451	26.165	26.659
55-59	13.702	14.120	14.646	15.227	15.812	16.352	16.994	17.585	18.187	18.985	19.942
60-64	11.286	11.528	11.755	12.011	12.354	12.811	13.222	13.728	14.300	14.863	15.392
65-69	9.044	9.203	9.426	9.686	9.956	10.202	10.440	10.656	10.907	11.234	11.668
70-74	6.987	7.156	7.280	7.389	7.501	7.637	7.795	8.009	8.258	8.504	8.732
75+	8.525	8.576	8.652	8.748	8.874	9.027	9.233	9.427	9.606	9.805	10.026
JUMLAH	314.338	316.430	318.399	320.272	322.326	324.325	326.296	327.982	329.891	331.609	333.291

Tabel II.8.3
PROYEKSI PENDUDUK
MENURUT JENIS KELAMIN DAN KELOMPOK UMUR
TAHUN 2010 - 2020

BULELENG

LAKI-LAKI + PEREMPUAN

KELOMPOK UMUR	2010	2011	2012	2013	2014	2015	2016	2017	2018	2019	2020
(1)	(2)	(3)	(4)	(5)	(6)	(7)	(8)	(9)	(10)	(11)	(12)
0-4	57.274	56.034	54.758	53.628	52.714	51.979	51.485	50.978	50.497	50.018	49.562
5-9	59.532	60.077	60.083	59.872	59.333	58.466	57.256	56.003	54.904	54.018	53.337
10-14	55.511	56.025	57.010	58.022	59.094	59.867	60.463	60.507	60.343	59.835	59.018
15-19	54.376	53.673	53.041	52.490	52.050	52.199	52.666	53.559	54.493	55.472	56.197
20-24	47.571	47.881	48.032	47.980	47.681	47.117	46.467	45.866	45.343	44.909	44.998
25-29	43.804	43.528	43.367	43.408	43.695	44.030	44.346	44.512	44.494	44.243	43.767
30-34	45.949	45.261	44.658	44.078	43.547	43.080	42.833	42.696	42.758	43.059	43.429
35-39	45.241	45.063	44.710	44.298	43.814	43.386	42.764	42.217	41.694	41.210	40.806
40-44	46.817	47.249	47.602	47.845	47.935	47.827	47.676	47.330	46.930	46.442	46.036
45-49	42.042	44.133	46.140	48.003	49.315	50.211	50.748	51.193	51.528	51.689	51.656
50-54	35.597	36.906	38.173	39.471	41.243	43.324	45.527	47.639	49.606	51.006	51.992
55-59	26.936	27.818	28.812	29.872	30.944	31.986	33.192	34.353	35.552	37.178	39.096
60-64	21.118	21.556	22.069	22.668	23.365	24.167	24.994	25.919	26.914	27.917	28.904
65-69	16.824	17.134	17.499	17.927	18.423	18.977	19.408	19.896	20.467	21.129	21.896
70-74	12.926	13.214	13.458	13.674	13.873	14.078	14.387	14.741	15.146	15.603	16.110
75+	14.690	14.769	14.896	15.062	15.270	15.520	15.864	16.195	16.511	16.840	17.191
JUMLAH	626.208	630.321	634.308	638.298	642.296	646.214	650.076	653.604	657.180	660.568	663.995

Tabel II.9.1
PROYEKSI PENDUDUK
MENURUT JENIS KELAMIN DAN KELOMPOK UMUR
TAHUN 2010 - 2020

KOTA DENPASAR

LAKI-LAKI

KELOMPOK UMUR	2010	2011	2012	2013	2014	2015	2016	2017	2018	2019	2020
(1)	(2)	(3)	(4)	(5)	(6)	(7)	(8)	(9)	(10)	(11)	(12)
0-4	39.438	39.202	38.975	38.723	38.646	38.638	38.932	39.197	39.468	39.755	39.963
5-9	35.003	35.991	36.689	37.220	37.565	37.711	37.454	37.159	36.919	36.829	36.755
10-14	28.291	29.148	30.277	31.375	32.563	33.619	34.531	35.119	35.618	35.927	35.989
15-19	32.091	32.330	32.657	32.966	33.363	34.172	35.130	36.367	37.641	39.005	40.152
20-24	44.920	45.931	46.813	47.444	47.934	48.065	48.276	48.549	48.897	49.343	50.336
25-29	42.866	43.708	44.716	45.797	47.095	48.239	49.260	50.089	50.743	51.224	51.263
30-34	41.471	41.589	41.821	41.997	42.300	42.801	43.582	44.468	45.514	46.752	47.780
35-39	37.718	38.267	38.699	38.994	39.204	39.462	39.518	39.638	39.782	40.027	40.412
40-44	34.410	35.395	36.358	37.172	37.893	38.447	38.953	39.285	39.560	39.731	39.899
45-49	23.410	25.053	26.721	28.297	29.596	30.668	31.530	32.332	33.065	33.704	34.142
50-54	16.153	17.034	17.958	18.907	20.142	21.547	23.040	24.519	25.962	27.143	28.067
55-59	11.620	12.255	12.918	13.581	14.285	15.018	15.823	16.643	17.523	18.661	19.926
60-64	7.346	7.640	8.006	8.411	8.845	9.287	9.787	10.300	10.835	11.398	11.963
65-69	4.679	4.862	5.046	5.237	5.475	5.774	6.003	6.284	6.605	6.952	7.292
70-74	2.705	2.814	2.922	3.023	3.119	3.208	3.339	3.464	3.605	3.774	3.980
75+	2.598	2.659	2.738	2.814	2.912	3.010	3.119	3.238	3.346	3.467	3.582
JUMLAH	404.719	413.878	423.314	431.958	440.937	449.666	458.277	466.651	475.083	483.692	491.501

Tabel II.9.2
 PROYEKSI PENDUDUK
 MENURUT JENIS KELAMIN DAN KELOMPOK UMUR
 TAHUN 2010 - 2020

KOTA DENPASAR

PEREMPUAN

KELOMPOK UMUR	2010	2011	2012	2013	2014	2015	2016	2017	2018	2019	2020
(1)	(2)	(3)	(4)	(5)	(6)	(7)	(8)	(9)	(10)	(11)	(12)
0-4	36.758	36.791	36.738	36.788	36.930	37.203	37.481	37.797	38.054	38.307	38.561
5-9	32.723	33.686	34.353	34.873	35.177	35.233	35.212	35.171	35.159	35.262	35.507
10-14	27.442	28.197	29.215	30.283	31.375	32.301	33.193	33.849	34.294	34.547	34.576
15-19	34.659	34.838	35.015	35.227	35.494	36.103	36.993	38.272	39.549	40.878	41.998
20-24	43.998	45.308	46.502	47.471	48.112	48.521	48.617	48.779	48.907	49.132	49.826
25-29	41.561	41.819	42.157	42.744	43.661	44.831	46.091	47.307	48.217	48.812	49.191
30-34	39.422	39.644	39.894	40.132	40.319	40.376	40.545	40.864	41.352	42.176	43.265
35-39	36.055	36.647	37.079	37.460	37.790	38.130	38.279	38.514	38.674	38.809	38.831
40-44	31.346	32.257	33.129	33.951	34.659	35.227	35.751	36.186	36.504	36.792	37.101
45-49	21.150	22.634	24.108	25.550	26.732	27.697	28.479	29.268	29.959	30.565	31.059
50-54	14.352	15.211	16.040	16.894	17.949	19.172	20.488	21.830	23.096	24.136	24.994
55-59	10.577	11.114	11.758	12.472	13.195	13.890	14.693	15.498	16.288	17.284	18.440
60-64	6.819	7.102	7.381	7.683	8.047	8.494	8.919	9.440	10.002	10.576	11.128
65-69	4.750	4.927	5.146	5.397	5.651	5.892	6.131	6.374	6.631	6.938	7.321
70-74	2.961	3.089	3.208	3.318	3.432	3.558	3.693	3.870	4.053	4.248	4.429
75+	3.681	3.783	3.889	3.993	4.133	4.267	4.453	4.609	4.797	4.962	5.151
JUMLAH	388.254	397.047	405.612	414.236	422.656	430.895	439.018	447.628	455.536	463.424	471.378

Tabel II.9.3
PROYEKSI PENDUDUK
MENURUT JENIS KELAMIN DAN KELOMPOK UMUR
TAHUN 2010 - 2020

KOTA DENPASAR

LAKI-LAKI + PEREMPUAN

KELOMPOK UMUR	2010	2011	2012	2013	2014	2015	2016	2017	2018	2019	2020
(1)	(2)	(3)	(4)	(5)	(6)	(7)	(8)	(9)	(10)	(11)	(12)
0-4	76.196	75.993	75.713	75.511	75.576	75.841	76.413	76.994	77.522	78.062	78.524
5-9	67.726	69.677	71.042	72.093	72.742	72.944	72.666	72.330	72.078	72.091	72.262
10-14	55.733	57.345	59.492	61.658	63.938	65.920	67.724	68.968	69.912	70.474	70.565
15-19	66.750	67.168	67.672	68.193	68.857	70.275	72.123	74.639	77.190	79.883	82.150
20-24	88.918	91.239	93.315	94.915	96.046	96.586	96.893	97.328	97.804	98.475	100.162
25-29	84.427	85.527	86.873	88.541	90.756	93.070	95.351	97.396	98.960	100.036	100.454
30-34	80.893	81.233	81.715	82.129	82.619	83.177	84.127	85.332	86.866	88.928	91.045
35-39	73.773	74.914	75.778	76.454	76.994	77.592	77.797	78.152	78.456	78.836	79.243
40-44	65.756	67.652	69.487	71.123	72.552	73.674	74.704	75.471	76.064	76.523	77.000
45-49	44.560	47.687	50.829	53.847	56.328	58.365	60.009	61.600	63.024	64.269	65.201
50-54	30.505	32.245	33.998	35.801	38.091	40.719	43.528	46.349	49.058	51.279	53.061
55-59	22.197	23.369	24.676	26.053	27.480	28.908	30.516	32.141	33.811	35.945	38.366
60-64	14.165	14.742	15.387	16.094	16.892	17.781	18.706	19.740	20.837	21.974	23.091
65-69	9.429	9.789	10.192	10.634	11.126	11.666	12.134	12.658	13.236	13.890	14.613
70-74	5.666	5.903	6.130	6.341	6.551	6.766	7.032	7.334	7.658	8.022	8.409
75+	6.279	6.442	6.627	6.807	7.045	7.277	7.572	7.847	8.143	8.429	8.733
JUMLAH	792.973	810.925	828.926	846.194	863.593	880.561	897.295	914.279	930.619	947.116	962.879

DATA

MENCERDASKAN BANGSA

<http://www.bps.go.id>



BADAN PUSAT STATISTIK

Jl. Dr. Sutomo 6-8 Jakarta 10710

Tel. : (021) 3841195, 3842508, 3810291-4 Fax. : (021) 3857046

Homepage : <http://www.bps.go.id> E-mail : bpsHQ@bps.go.id