

**Proyeksi  
Penduduk Kabupaten/Kota  
Provinsi Kalimantan Tengah**

**2010-2020**



**BADAN PUSAT STATISTIK  
UNITED NATIONS POPULATION FUND**

**JAKARTA 2015**



**BADAN PUSAT STATISTIK**



**Proyeksi  
Penduduk Kabupaten/Kota  
Provinsi Kalimantan Tengah**

**2010-2020**



**PROYEKSI PENDUDUK KABUPATEN/KOTA  
TAHUN 2010 – 2020 PROVINSI KALIMANTAN TENGAH**

**Pengarah:**

Drs. Razali Ritonga, MA

**Tim Teknis:**

Dr. Indra Murty Surbakti, MA; Poetrijanti, S.Si; Dendi Handiyatmo SST, M.Si;  
Hermawan Agustina, S.Kom;

**Penyusun/Penulis:**

Yogo Aryo Jatmiko, S.ST

Subekti, M.Sc

**Pengolah Data:**

Ikhsan Fahmi, SST

**Layout:**

Nuraini, S.ST

<http://www.bps.go.id>

## KATA PENGANTAR

Proyeksi Penduduk Indonesia tahun 2010 - 2035 yang merupakan proyeksi penduduk untuk tingkat nasional dan provinsi telah diterbitkan pada tahun 2013. Untuk memenuhi kebutuhan data penduduk pada tingkat kabupaten/kota maka disusun proyeksi ini berdasarkan hasil Sensus Penduduk 2010 dan sesuai dengan asumsi penghitungan proyeksi nasional dan provinsi. Adapun metode yang digunakan memanfaatkan tren pertumbuhan penduduk sejak tahun 2000, dimana data kabupaten/kota sudah tersedia.

Publikasi Proyeksi Kabupaten/Kota disusun untuk periode 2010 - 2020 dengan tujuan untuk menunjang perencanaan pada tingkat kabupaten/kota di masa kini dan mendatang. Periode yang disampaikan cukup singkat dengan pertimbangan agar tren yang digunakan tidak terlalu menyimpang, sehingga hasil proyeksi ini masih dianggap realistis. Dengan demikian, untuk saat ini Badan Pusat Statistik telah menyediakan data proyeksi penduduk tingkat nasional, provinsi, dan kabupaten/kota yang dapat dimanfaatkan oleh semua pengguna data.

Penyusunan buku ini merupakan hasil kerja sama antara BPS dan UNFPA. Kami mengucapkan terima kasih kepada semua pihak yang telah membantu penyusunan buku ini. Semoga bermanfaat dan dapat memenuhi kebutuhan semua pihak yang memerlukan, khususnya bagi pihak yang berminat pada masalah sosial dan kependudukan.

Jakarta, Juni 2015

Kepala Badan Pusat Statistik,



Dr. Suryamin, M.Sc

<http://www.bps.go.id>

## DAFTAR ISI

	Halaman
<b>KATA PENGANTAR</b> .....	iii
<b>DAFTAR ISI</b> .....	v
<b>BAB I. PENDAHULUAN</b> .....	1
<b>BAB II. METODOLOGI</b> .....	3
<b>LAMPIRAN</b>	
<b>Tabel I.1</b> Proyeksi Penduduk Menurut Kabupaten/Kota dan Jenis Kelamin Tahun 2010 - 2020 .....	7
<b>Tabel I.2</b> Rasio Jenis Kelamin Menurut Kabupaten/Kota Tahun 2010 - 2020 .....	10
<b>Tabel I.3</b> Rasio Ketergantungan Menurut Kabupaten/Kota Tahun 2010 - 2020.....	11
<b>Tabel I.4</b> Persentase Penduduk Perkotaan Menurut Kabupaten/Kota Tahun 2010 - 2020 .....	12
<b>Tabel I.5</b> Persentase Penduduk Lansia Menurut Kabupaten/Kota Tahun 2010 - 2020..	13
<b>Gambar I</b> Piramida Penduduk Menurut Kabupaten/Kota Tahun 2010 - 2020.....	14
<b>Tabel II</b> Proyeksi Penduduk Menurut Jenis Kelamin dan Kelompok Umur Tahun 2010 - 2020 .....	28

<http://www.bps.go.id>

# **BAB I**

## **PENDAHULUAN**

Informasi mengenai jumlah penduduk untuk wilayah kabupaten/kota pada suatu waktu tertentu dibutuhkan dalam perencanaan program dan penentuan kebijakan di wilayah tersebut. Ketersediaan data penduduk dapat dipenuhi dari hasil sensus penduduk ataupun survei tentang kependudukan namun sayangnya tidak setiap tahun tersedia. Oleh karena itu, perlu dibuat suatu perkiraan mengenai jumlah penduduk untuk wilayah kabupaten/kota untuk mengisi kekosongan pada tahun-tahun tertentu atau untuk masa yang akan datang. Ketersediaan data penduduk selain jumlahnya juga dilengkapi dengan karakteristik jenis kelamin dan umur.

Secara nasional dan pada tingkat provinsi informasi penduduk masa yang datang diproyeksikan menggunakan metode komponen, dimana metode tersebut mempertimbangkan pengaruh kelahiran, kematian, dan perpindahan. Untuk tingkat kabupaten/kota dilakukan estimasi penduduk dengan mempertimbangkan laju pertumbuhan untuk masing-masing kabupaten/kota, dimana jumlahnya dipagu dari hasil proyeksi provinsinya. Metode estimasi yang digunakan untuk memperkirakan penduduk masa yang akan datang menggunakan metode geometrik. Pemilihan metode ini didasarkan kesesuaian pertambahan secara geometrik dengan perkembangan jumlah penduduk dan disadari bahwa belum dapat dilakukannya proyeksi komponen untuk kabupaten/kota karena komponen pertumbuhan belum tersedia lengkap.

Proyeksi penduduk kabupaten/kota menurut kelompok umur, dan jenis kelamin yang disajikan dalam publikasi ini mencakup kurun waktu sepuluh tahun, mulai tahun 2010 sampai dengan 2020. Pembuatan proyeksi dengan kurun waktu singkat ini dimaksudkan agar hasilnya dapat digunakan untuk berbagai keperluan terutama perencanaan di masa datang.



<http://www.bps.go.id>

## BAB II

### METODOLOGI

Estimasi penduduk dengan metode geometrik menggunakan asumsi bahwa jumlah penduduk akan bertambah secara geometrik menggunakan dasar perhitungan bunga majemuk. Laju pertumbuhan penduduk (*rate of growth*) dianggap sama untuk setiap tahun. Berikut formula yang digunakan pada metode geometrik:

$$P_t = P_0(1+r)^t$$

$$r = \left(\frac{P_t}{P_0}\right)^{\frac{1}{t}} - 1$$

dimana:

- $P_t$  = jumlah penduduk pada tahun  $t$
- $P_0$  = jumlah penduduk pada tahun awal
- $r$  = laju pertumbuhan penduduk
- $t$  = periode waktu antara tahun dasar dan tahun  $t$  (dalam tahun)

Data yang dibutuhkan:

- Jumlah penduduk Indonesia hasil proyeksi penduduk 2010 - 2020 yang dirinci menurut provinsi.
- Jumlah penduduk kabupaten/kota hasil SP2000, SP2010, khusus untuk kabupaten/kota di Provinsi Aceh dan Pulau Nias menggunakan data hasil SPAN2005.

Tahapan menghitung proyeksi penduduk kabupaten/kota:

1. Menentukan sumber data dari hasil sensus penduduk dan menyiapkan dua data penduduk untuk tahun yang berbeda pada suatu wilayah yang akan diestimasi.
2. Menghitung rata-rata laju pertumbuhan penduduk (LPP) per tahun dengan metode geometrik berdasarkan jumlah penduduk dari dua data.

3. Melakukan proses prorata, agar penjumlahan penduduk untuk semua kabupaten/kota menjadi sama dengan penduduk provinsi (penduduk provinsi sebagai kontrol).
4. Jumlah penduduk per kabupaten/kota ini selanjutnya akan digunakan sebagai kontrol untuk menghitung jumlah penduduk menurut kota/desa, jenis kelamin, maupun menurut kelompok umur.
5. Estimasi penduduk untuk karakteristik jenis kelamin diolah terlebih dahulu, kemudian dilanjutkan dengan estimasi penduduk perkotaan dan perdesaan.
6. Melakukan proses iterasi untuk penduduk kabupaten/kota menurut jenis kelamin dan kelompok umur, dengan jumlah penduduk provinsi sebagai kontrol.
7. Untuk kabupaten/kota pemekaran yang pada saat sensus belum terbentuk, data ditelusuri menggunakan data SP2000, SPAN2005, dan SP2010.

# LAMPIRAN

<http://www.tips.go.id>



Tabel I.1.1  
 PROYEKSI PENDUDUK  
 MENURUT KABUPATEN/KOTA DAN JENIS KELAMIN  
 TAHUN 2010 - 2020

KALIMANTAN TENGAH

LAKI-LAKI

KABUPATEN/KOTA	2010	2011	2012	2013	2014	2015	2016	2017	2018	2019	2020
(1)	(2)	(3)	(4)	(5)	(6)	(7)	(8)	(9)	(10)	(11)	(12)
KOTAWARINGIN BARAT	125.192	129.458	133.820	138.244	142.742	147.292	151.891	156.549	161.214	165.924	170.697
KOTAWARINGIN TIMUR	198.019	203.401	208.805	213.995	219.693	225.087	230.497	235.839	241.460	246.765	251.844
KAPUAS	168.309	170.304	172.251	174.201	175.951	177.648	179.248	180.742	182.073	183.396	184.634
BARITO SELATAN	63.366	64.231	65.060	65.899	66.623	67.358	68.058	68.719	69.327	69.931	70.493
BARITO UTARA	63.171	63.840	64.482	65.089	65.669	66.211	66.715	67.179	67.581	67.989	68.349
SUKAMARA	23.967	24.995	26.054	27.145	28.259	29.404	30.576	31.773	32.998	34.247	35.539
LAMANDAU	33.805	34.909	36.032	37.242	38.285	39.480	40.651	41.829	43.015	44.171	45.398
SERUYAN	75.530	79.008	82.603	86.320	90.134	94.068	98.112	102.261	106.525	110.889	115.353
KATINGAN	76.770	78.263	79.720	81.156	82.575	83.964	85.325	86.648	87.941	89.150	90.397
PULANG PISAU	62.486	63.041	63.565	64.084	64.517	64.939	65.324	65.688	65.953	66.234	66.451
GUNUNG MAS	51.627	52.984	54.346	55.711	57.079	58.444	59.803	61.174	62.468	63.788	65.097
BARITO TIMUR	50.244	51.863	53.503	55.170	56.835	58.539	60.246	61.962	63.689	65.419	67.151
MURUNG RAYA	50.456	51.830	53.212	54.598	55.991	57.382	58.771	60.173	61.533	62.899	64.268
KOTA PALANGKA RAYA	113.335	117.151	121.027	124.988	128.949	132.980	137.057	141.179	145.301	149.489	153.633
JUMLAH	1.156.277	1.185.278	1.214.480	1.243.842	1.273.302	1.302.796	1.332.274	1.361.715	1.391.078	1.420.291	1.449.304

Tabel I.1.2  
PROYEKSI PENDUDUK  
MENURUT KABUPATEN/KOTA DAN JENIS KELAMIN  
TAHUN 2010 - 2020

KALIMANTAN TENGAH

PEREMPUAN

KABUPATEN/KOTA	2010	2011	2012	2013	2014	2015	2016	2017	2018	2019	2020
(1)	(2)	(3)	(4)	(5)	(6)	(7)	(8)	(9)	(10)	(11)	(12)
KOTAWARINGIN BARAT	111.712	115.431	119.216	122.996	126.887	130.849	134.823	138.800	142.868	146.987	151.054
KOTAWARINGIN TIMUR	177.630	182.544	186.942	191.743	196.458	201.089	205.779	210.255	214.949	219.601	224.185
KAPUAS	162.299	164.042	165.805	167.357	169.004	170.401	171.795	173.102	174.309	175.424	176.451
BARITO SELATAN	61.139	61.873	62.600	63.320	63.986	64.629	65.246	65.824	66.409	66.865	67.372
BARITO UTARA	58.739	59.299	59.835	60.344	60.825	61.268	61.685	62.108	62.438	62.724	62.998
SUKAMARA	21.226	22.114	23.028	23.963	24.931	25.917	26.928	28.002	29.046	30.095	31.193
LAMANDAU	29.680	30.619	31.572	32.462	33.513	34.495	35.509	36.512	37.497	38.509	39.523
SERUYAN	65.183	68.065	71.144	74.256	77.487	80.791	84.195	87.714	91.314	94.991	98.713
KATINGAN	70.194	71.392	72.689	73.926	75.079	76.341	77.512	78.658	79.765	80.847	81.890
PULANG PISAU	57.891	58.299	58.793	59.194	59.498	59.906	60.160	60.493	60.704	60.884	61.030
GUNUNG MAS	45.752	46.904	48.064	49.225	50.388	51.503	52.681	53.880	54.989	56.122	57.248
BARITO TIMUR	47.602	49.091	50.554	52.146	53.611	55.157	56.700	58.292	59.868	61.455	63.042
MURUNG RAYA	46.831	47.965	49.257	50.493	51.733	53.008	54.205	55.431	56.664	57.886	59.095
KOTA PALANGKA RAYA	108.663	112.204	115.804	119.466	123.156	126.885	130.700	134.488	138.311	142.178	146.058
JUMLAH	1.064.541	1.089.842	1.115.303	1.140.891	1.166.556	1.192.239	1.217.918	1.243.559	1.269.131	1.294.568	1.319.852

Tabel I.1.3  
PROYEKSI PENDUDUK  
MENURUT KABUPATEN/KOTA DAN JENIS KELAMIN  
TAHUN 2010 - 2020

KALIMANTAN TENGAH

LAKI-LAKI + PEREMPUAN

KABUPATEN/KOTA	2010	2011	2012	2013	2014	2015	2016	2017	2018	2019	2020
(1)	(2)	(3)	(4)	(5)	(6)	(7)	(8)	(9)	(10)	(11)	(12)
KOTAWARINGIN BARAT	236.904	244.889	253.036	261.240	269.629	278.141	286.714	295.349	304.082	312.911	321.751
KOTAWARINGIN TIMUR	375.649	385.945	395.747	405.738	416.151	426.176	436.276	446.094	456.409	466.366	476.029
KAPUAS	330.608	334.346	338.056	341.558	344.955	348.049	351.043	353.844	356.382	358.820	361.085
BARITO SELATAN	124.505	126.104	127.660	129.219	130.609	131.987	133.304	134.543	135.736	136.796	137.865
BARITO UTARA	121.910	123.139	124.317	125.433	126.494	127.479	128.400	129.287	130.019	130.713	131.347
SUKAMARA	45.193	47.109	49.082	51.108	53.190	55.321	57.504	59.775	62.044	64.342	66.732
LAMANDAU	63.485	65.528	67.604	69.704	71.798	73.975	76.160	78.341	80.512	82.680	84.921
SERUYAN	140.713	147.073	153.747	160.576	167.621	174.859	182.307	189.975	197.839	205.880	214.066
KATINGAN	146.964	149.655	152.409	155.082	157.654	160.305	162.837	165.306	167.706	169.997	172.287
PULANG PISAU	120.377	121.340	122.358	123.278	124.015	124.845	125.484	126.181	126.657	127.118	127.481
GUNUNG MAS	97.379	99.888	102.410	104.936	107.467	109.947	112.484	115.054	117.457	119.910	122.345
BARITO TIMUR	97.846	100.954	104.057	107.316	110.446	113.696	116.946	120.254	123.557	126.874	130.193
MURUNG RAYA	97.287	99.795	102.469	105.091	107.724	110.390	112.976	115.604	118.197	120.785	123.363
KOTA PALANGKA RAYA	221.998	229.355	236.831	244.454	252.105	259.865	267.757	275.667	283.612	291.667	299.691
JUMLAH	2.220.818	2.275.120	2.329.783	2.384.733	2.439.858	2.495.035	2.550.192	2.605.274	2.660.209	2.714.859	2.769.156



Tabel I.2  
RASIO JENIS KELAMIN  
MENURUT KABUPATEN/KOTA  
TAHUN 2010 - 2020

KALIMANTAN TENGAH

KABUPATEN/KOTA	2010	2011	2012	2013	2014	2015	2016	2017	2018	2019	2020
(1)	(2)	(3)	(4)	(5)	(6)	(7)	(8)	(9)	(10)	(11)	(12)
KOTAWARINGIN BARAT	112,07	112,15	112,25	112,40	112,50	112,57	112,66	112,79	112,84	112,88	113,00
KOTAWARINGIN TIMUR	111,48	111,43	111,70	111,61	111,83	111,93	112,01	112,17	112,33	112,37	112,34
KAPUAS	103,70	103,82	103,89	104,09	104,11	104,25	104,34	104,41	104,45	104,54	104,64
BARITO SELATAN	103,64	103,81	103,93	104,07	104,12	104,22	104,31	104,40	104,39	104,59	104,63
BARITO UTARA	107,55	107,66	107,77	107,86	107,96	108,07	108,15	108,16	108,24	108,39	108,49
SUKAMARA	112,91	113,03	113,14	113,28	113,35	113,45	113,55	113,47	113,61	113,80	113,93
LAMANDAU	113,90	114,01	114,13	114,72	114,24	114,45	114,48	114,56	114,72	114,70	114,86
SERUYAN	115,87	116,08	116,11	116,25	116,32	116,43	116,53	116,58	116,66	116,74	116,86
KATINGAN	109,37	109,62	109,67	109,78	109,98	109,99	110,08	110,16	110,25	110,27	110,39
PULANG PISAU	107,94	108,13	108,12	108,26	108,44	108,40	108,58	108,59	108,65	108,79	108,88
GUNUNG MAS	112,84	112,96	113,07	113,18	113,28	113,48	113,52	113,54	113,60	113,66	113,71
BARITO TIMUR	105,55	105,65	105,83	105,80	106,01	106,13	106,25	106,30	106,38	106,45	106,52
MURUNG RAYA	107,74	108,06	108,03	108,13	108,23	108,25	108,42	108,55	108,59	108,66	108,75
KOTA PALANGKA RAYA	104,30	104,41	104,51	104,62	104,70	104,80	104,86	104,98	105,05	105,14	105,19
JUMLAH	108,62	108,76	108,89	109,02	109,15	109,27	109,39	109,50	109,61	109,71	109,81

Tabel I.3  
RASIO KETERGANTUNGAN  
MENURUT KABUPATEN/KOTA  
TAHUN 2010 - 2020

KALIMANTAN TENGAH

KABUPATEN/KOTA	2010	2011	2012	2013	2014	2015	2016	2017	2018	2019	2020
(1)	(2)	(3)	(4)	(5)	(6)	(7)	(8)	(9)	(10)	(11)	(12)
KOTAWARINGIN BARAT	47,39	46,46	45,57	44,78	44,06	43,44	42,78	42,20	41,68	41,19	40,74
KOTAWARINGIN TIMUR	48,96	48,06	47,19	46,41	45,71	45,10	44,45	43,87	43,36	42,88	42,43
KAPUAS	51,77	50,78	49,82	48,95	48,18	47,50	46,78	46,15	45,59	45,07	44,59
BARITO SELATAN	53,25	52,16	51,13	50,19	49,35	48,61	47,83	47,15	46,55	46,00	45,48
BARITO UTARA	52,29	51,25	50,26	49,38	48,58	47,88	47,13	46,47	45,90	45,36	44,85
SUKAMARA	50,00	49,09	48,21	47,43	46,75	46,15	45,50	44,91	44,40	43,92	43,48
LAMANDAU	49,23	48,26	47,33	46,49	45,75	45,10	44,41	43,81	43,28	42,79	42,37
SERUYAN	46,97	46,15	45,38	44,70	44,08	43,56	42,98	42,48	42,02	41,60	41,20
KATINGAN	54,28	53,26	52,30	51,42	50,64	49,98	49,23	48,60	48,04	47,50	47,01
PULANG PISAU	52,89	51,84	50,83	49,91	49,10	48,39	47,64	46,98	46,42	45,90	45,42
GUNUNG MAS	58,42	57,41	56,43	55,56	54,76	54,10	53,34	52,70	52,12	51,58	51,07
BARITO TIMUR	50,92	49,89	48,93	48,05	47,27	46,60	45,89	45,27	44,73	44,24	43,79
MURUNG RAYA	60,31	59,24	58,22	57,29	56,45	55,72	54,93	54,22	53,60	53,01	52,44
KOTA PALANGKA RAYA	42,60	41,85	41,13	40,48	39,90	39,41	38,86	38,38	37,96	37,55	37,17
JUMLAH	50,35	49,38	48,45	47,61	46,86	46,21	45,51	44,90	44,35	43,84	43,36

Tabel I.4  
 PERSENTASE PENDUDUK PERKOTAAN  
 MENURUT KABUPATEN/KOTA  
 TAHUN 2010 - 2020

KALIMANTAN TENGAH

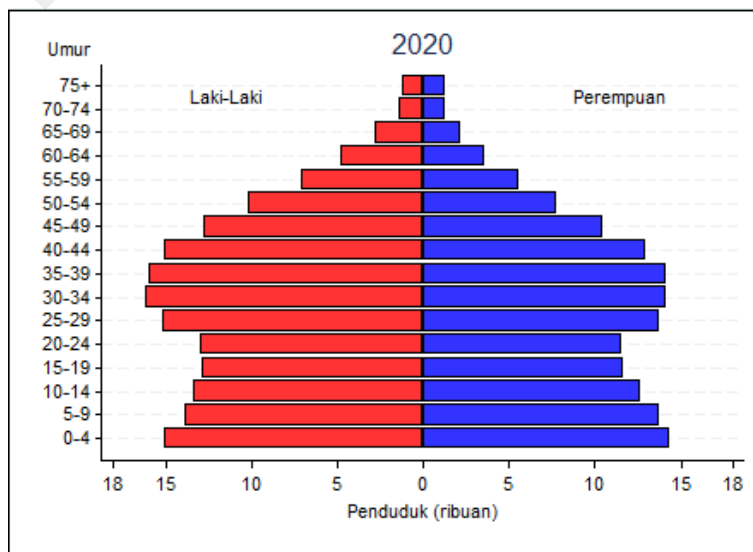
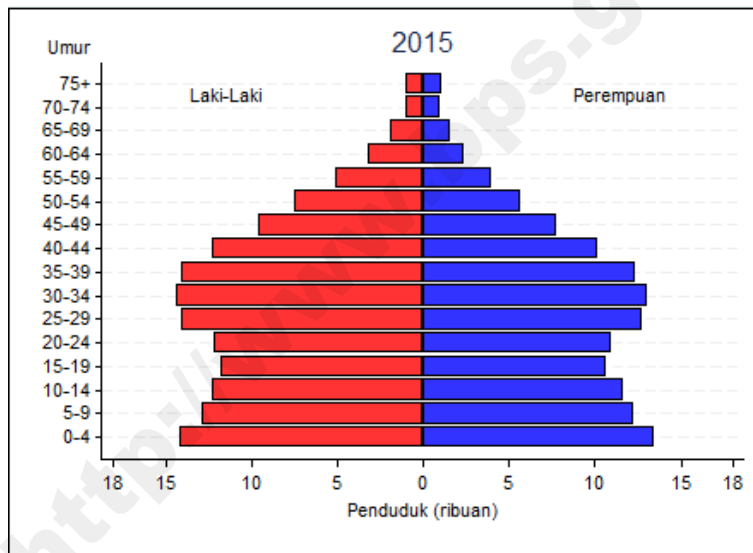
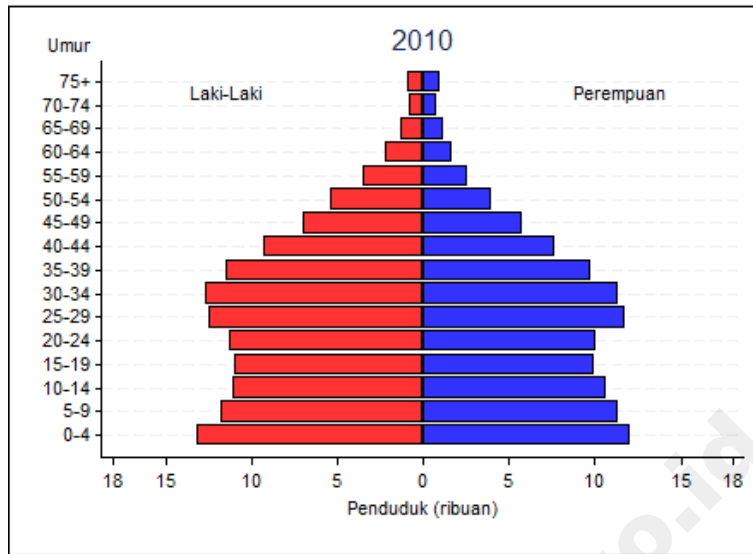
KABUPATEN/KOTA	2010	2011	2012	2013	2014	2015	2016	2017	2018	2019	2020
(1)	(2)	(3)	(4)	(5)	(6)	(7)	(8)	(9)	(10)	(11)	(12)
KOTAWARINGIN BARAT	45,71	46,34	46,97	47,60	48,22	48,85	49,56	50,26	50,97	51,67	52,38
KOTAWARINGIN TIMUR	35,76	36,39	37,02	37,65	38,27	38,91	39,61	40,32	41,02	41,72	42,43
KAPUAS	21,39	22,02	22,65	23,29	23,91	24,55	25,25	25,96	26,67	27,37	28,08
BARITO SELATAN	24,43	25,06	25,69	26,32	26,95	27,58	28,29	28,99	29,70	30,41	31,11
BARITO UTARA	28,18	28,81	29,45	30,08	30,70	31,33	32,04	32,75	33,45	34,15	34,86
SUKAMARA	28,85	29,47	30,10	30,73	31,36	31,99	32,69	33,40	34,10	34,81	35,51
LAMANDAU	19,31	19,94	20,57	21,19	21,82	22,45	23,15	23,86	24,56	25,26	25,97
SERUYAN	19,42	20,04	20,67	21,30	21,93	22,55	23,26	23,96	24,67	25,37	26,07
KATINGAN	24,15	24,78	25,41	26,03	26,66	27,29	28,00	28,70	29,41	30,11	30,82
PULANG PISAU	13,03	13,67	14,29	14,93	15,55	16,19	16,89	17,59	18,30	19,01	19,71
GUNUNG MAS	21,02	21,65	22,28	22,90	23,53	24,15	24,86	25,57	26,27	26,97	27,68
BARITO TIMUR	25,46	26,09	26,72	27,35	27,98	28,61	29,31	30,02	30,73	31,43	32,14
MURUNG RAYA	14,90	15,53	16,16	16,79	17,42	18,05	18,76	19,47	20,17	20,87	21,58
KOTA PALANGKA RAYA	90,79	91,42	92,05	92,68	93,31	93,95	94,65	95,36	96,06	96,76	97,47
JUMLAH	33,47	34,09	34,72	35,35	35,98	36,61	37,32	38,02	38,73	39,43	40,14

Tabel I.5  
PERSENTASE PENDUDUK LANSIA  
MENURUT KABUPATEN/KOTA  
TAHUN 2010 - 2020

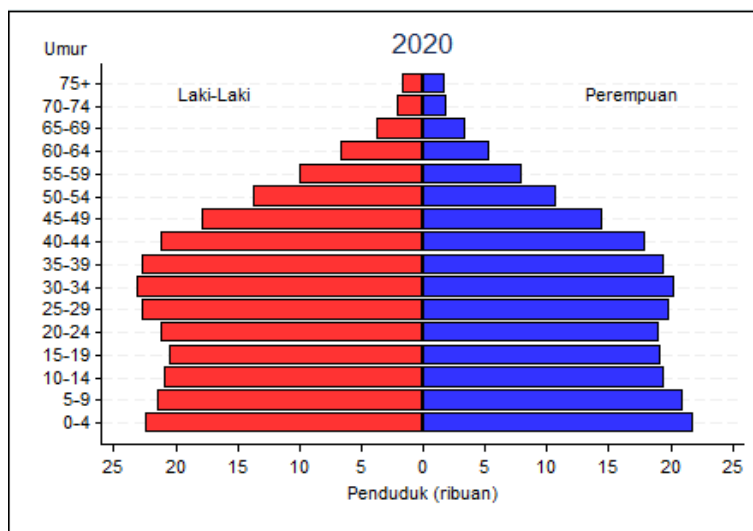
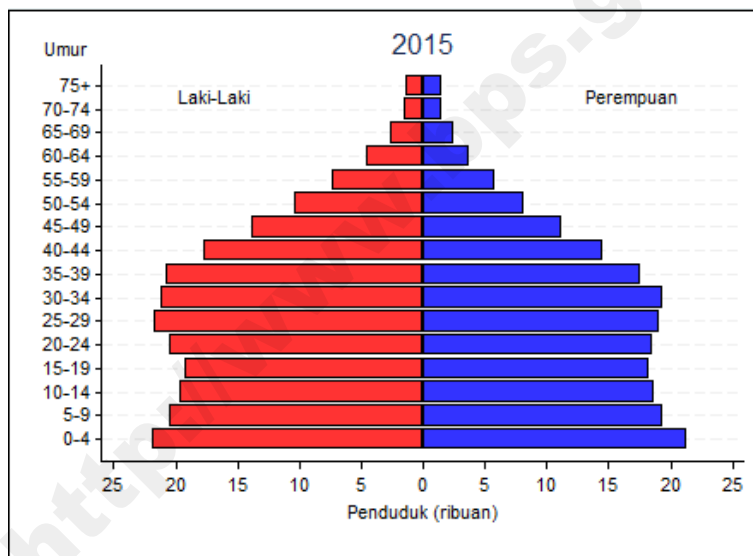
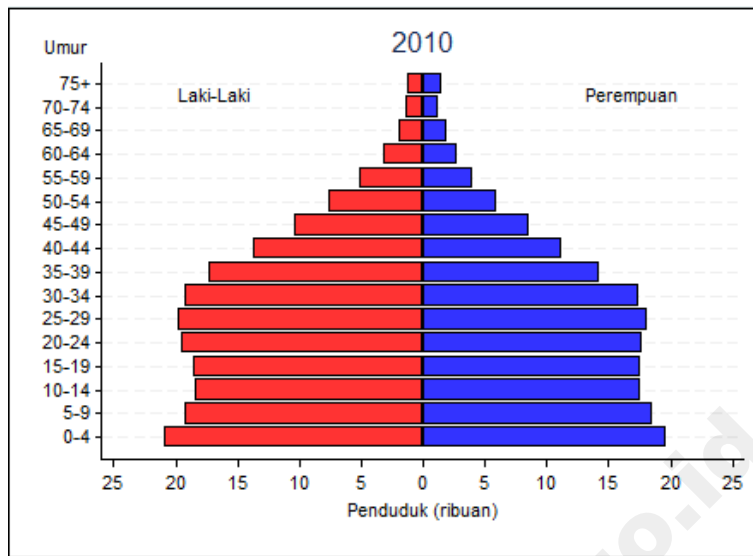
KALIMANTAN TENGAH

KABUPATEN/KOTA	2010	2011	2012	2013	2014	2015	2016	2017	2018	2019	2020
(1)	(2)	(3)	(4)	(5)	(6)	(7)	(8)	(9)	(10)	(11)	(12)
KOTAWARINGIN BARAT	4,20	4,26	4,35	4,45	4,58	4,73	4,90	5,10	5,31	5,54	5,78
KOTAWARINGIN TIMUR	4,02	4,09	4,18	4,28	4,41	4,56	4,73	4,92	5,13	5,35	5,59
KAPUAS	5,32	5,40	5,51	5,64	5,80	5,99	6,20	6,44	6,70	6,98	7,28
BARITO SELATAN	5,31	5,39	5,49	5,61	5,76	5,94	6,15	6,38	6,64	6,91	7,20
BARITO UTARA	4,62	4,70	4,79	4,91	5,06	5,23	5,42	5,63	5,87	6,12	6,39
SUKAMARA	4,13	4,20	4,28	4,38	4,52	4,67	4,85	5,04	5,26	5,49	5,73
LAMANDAU	5,37	5,45	5,55	5,67	5,83	6,03	6,23	6,47	6,73	7,01	7,31
SERUYAN	2,99	3,04	3,11	3,20	3,30	3,43	3,56	3,71	3,88	4,06	4,25
KATINGAN	4,86	4,93	5,03	5,15	5,30	5,48	5,68	5,90	6,15	6,41	6,69
PULANG PISAU	7,00	7,09	7,22	7,38	7,58	7,81	8,07	8,36	8,69	9,04	9,40
GUNUNG MAS	4,95	5,03	5,14	5,27	5,43	5,62	5,82	6,06	6,32	6,60	6,89
BARITO TIMUR	5,65	5,73	5,83	5,95	6,11	6,29	6,51	6,74	7,01	7,29	7,60
MURUNG RAYA	4,05	4,12	4,21	4,32	4,46	4,61	4,79	4,99	5,21	5,45	5,69
KOTA PALANGKA RAYA	3,98	4,04	4,12	4,23	4,35	4,50	4,67	4,86	5,06	5,28	5,52
JUMLAH	4,64	4,71	4,79	4,90	5,03	5,20	5,37	5,58	5,80	6,04	6,30

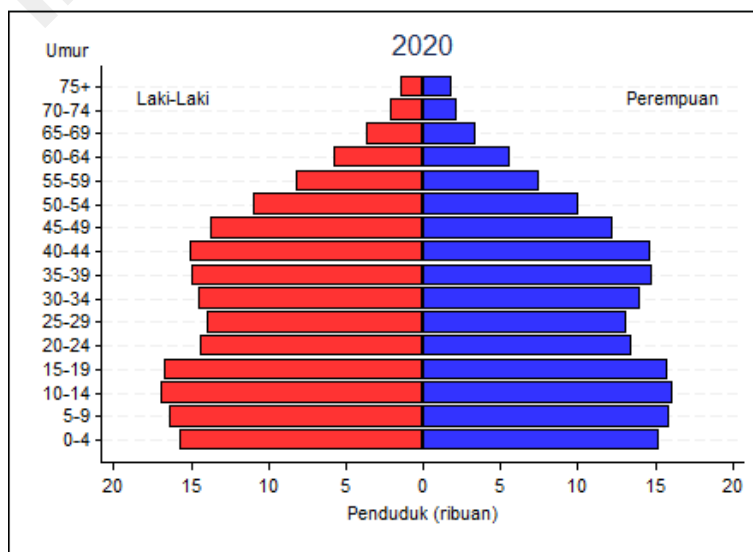
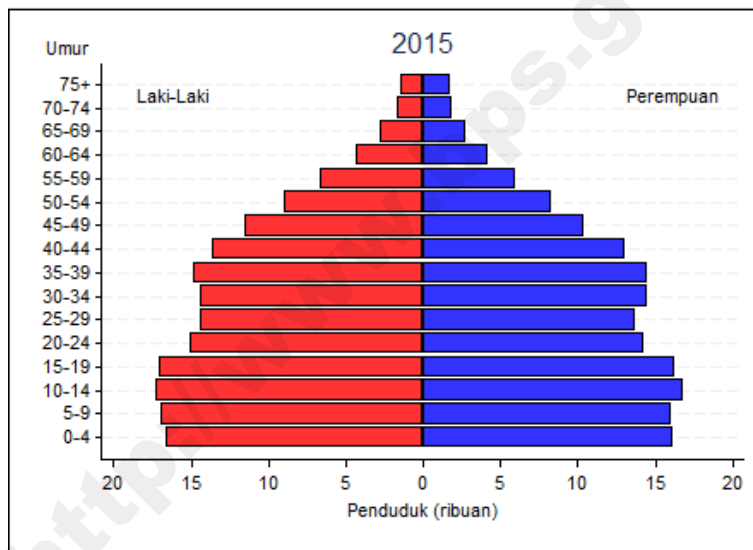
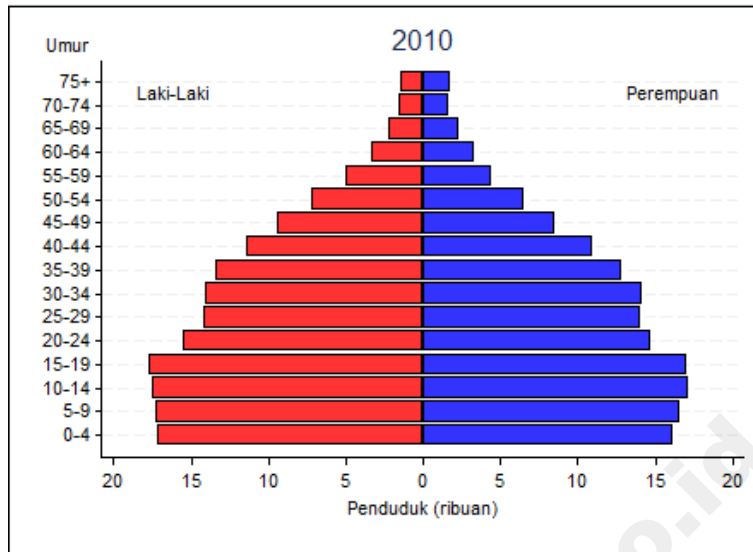
Gambar I.1  
 PIRAMIDA PENDUDUK KOTAWARINGIN BARAT  
 TAHUN 2010 – 2020



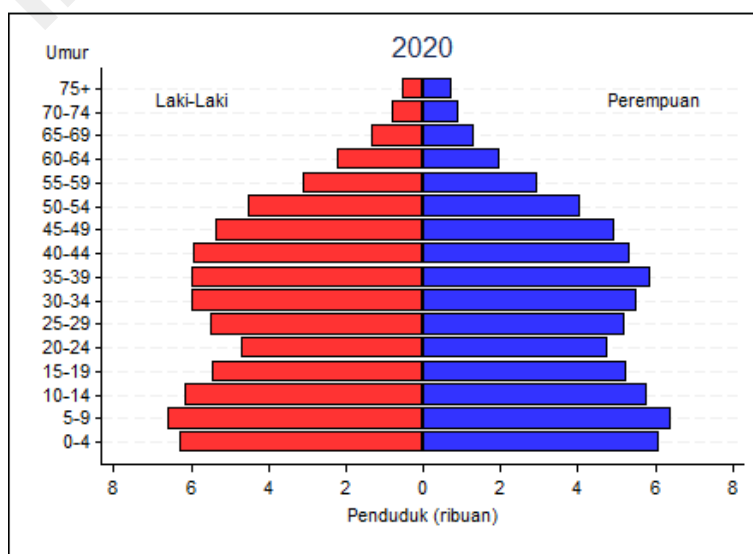
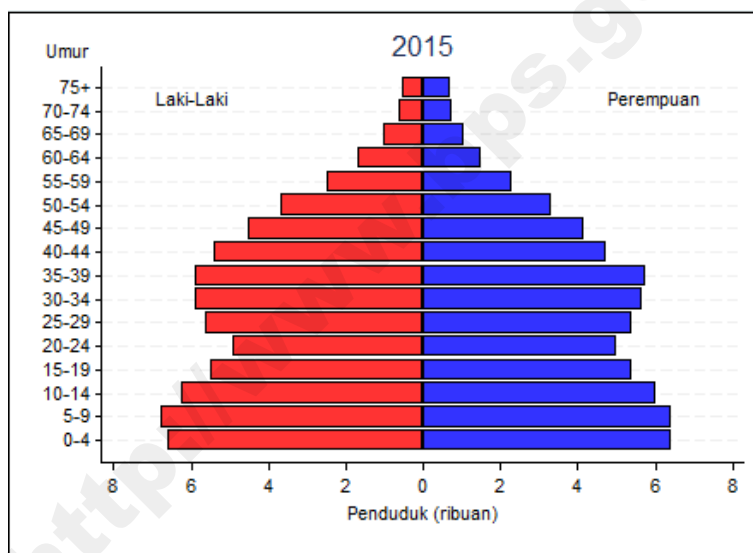
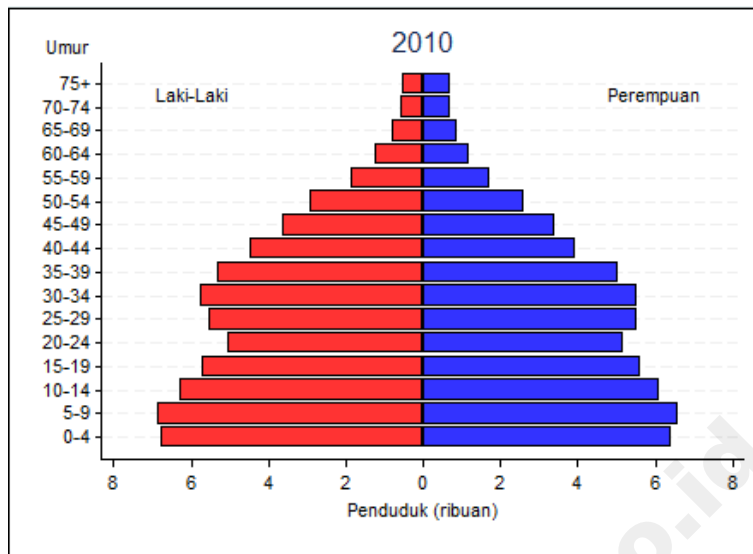
Gambar 1.2  
 PIRAMIDA PENDUDUK KOTAWARINGIN TIMUR  
 TAHUN 2010 – 2020



Gambar I.3  
 PIRAMIDA PENDUDUK KAPUAS  
 TAHUN 2010 – 2020

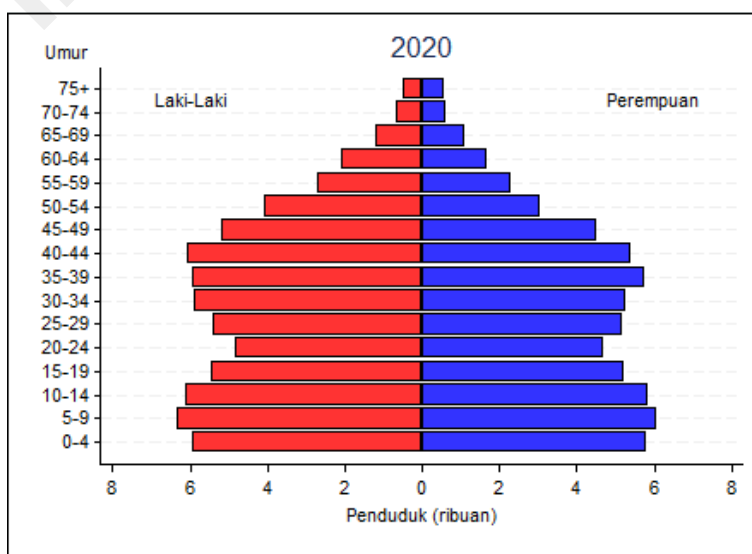
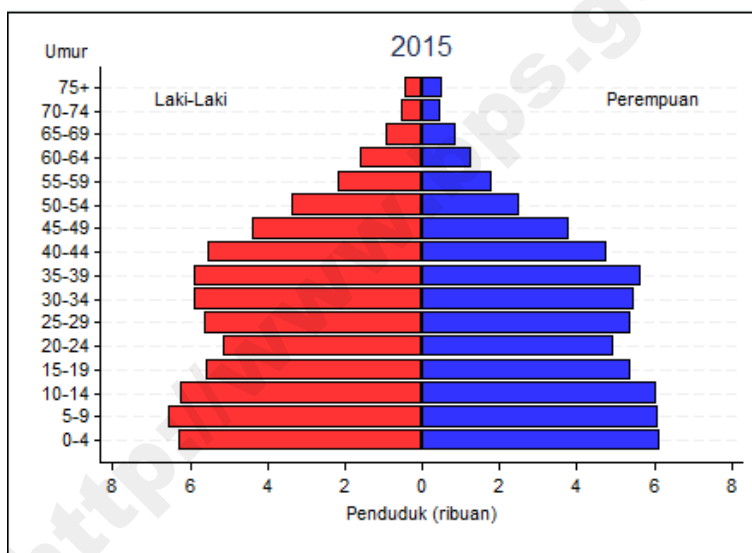
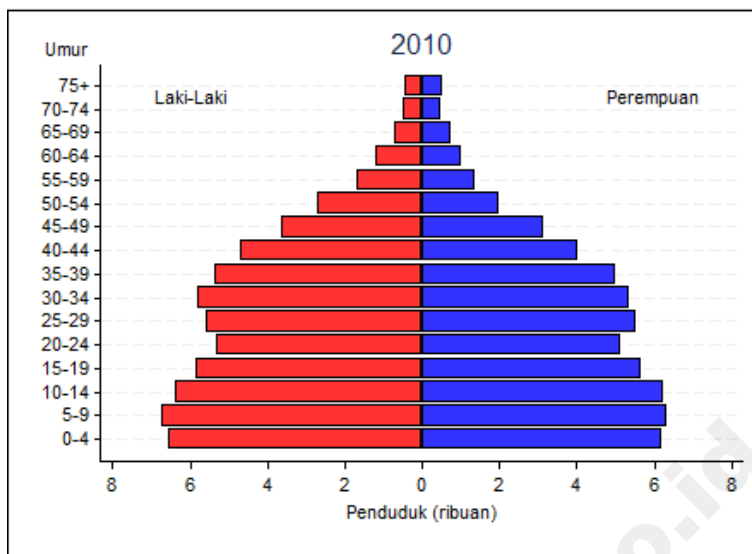


Gambar I.4  
 PIRAMIDA PENDUDUK BARITO SELATAN  
 TAHUN 2010 – 2020

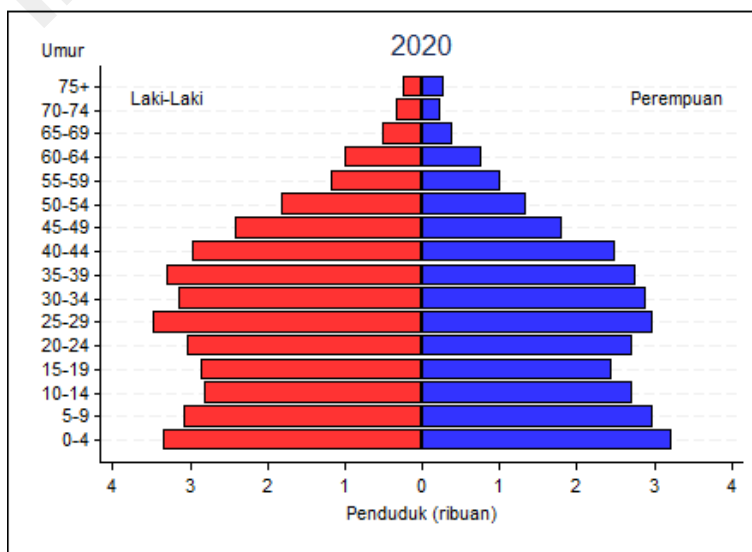
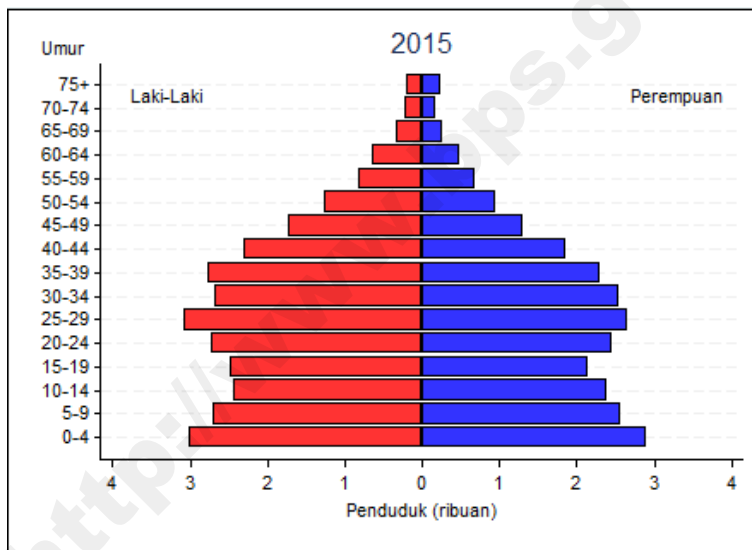
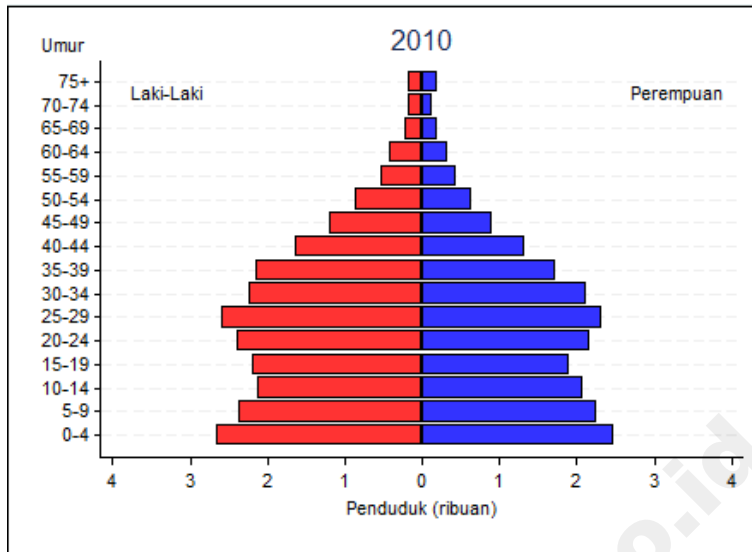




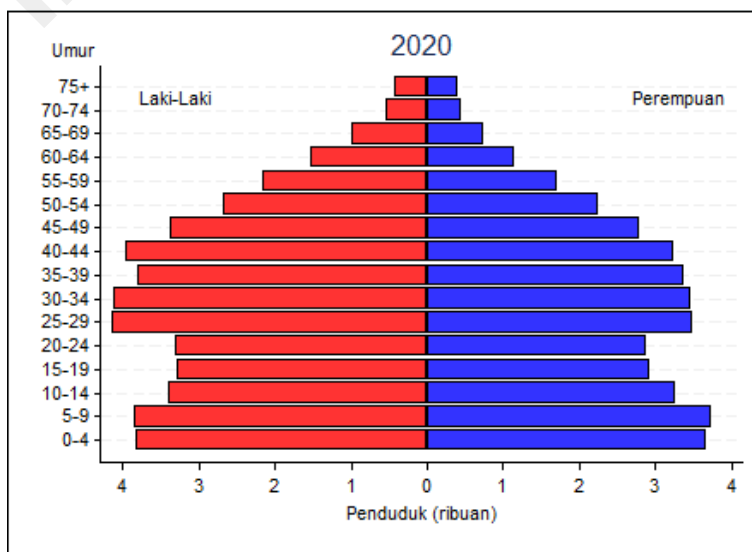
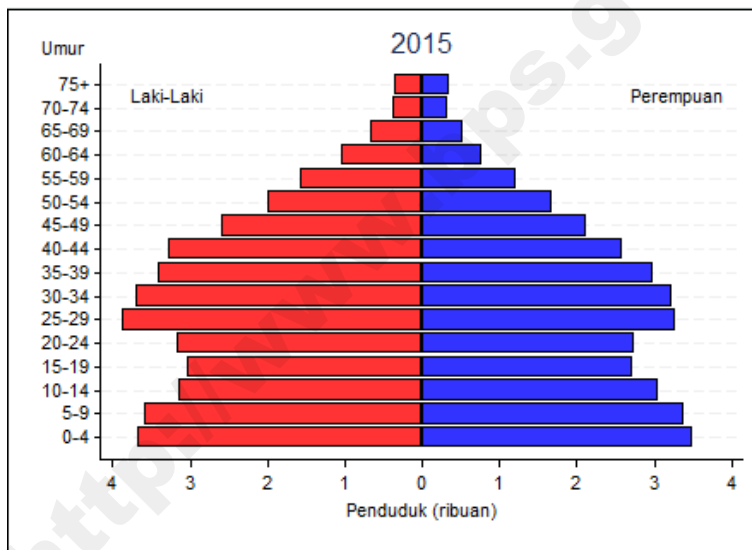
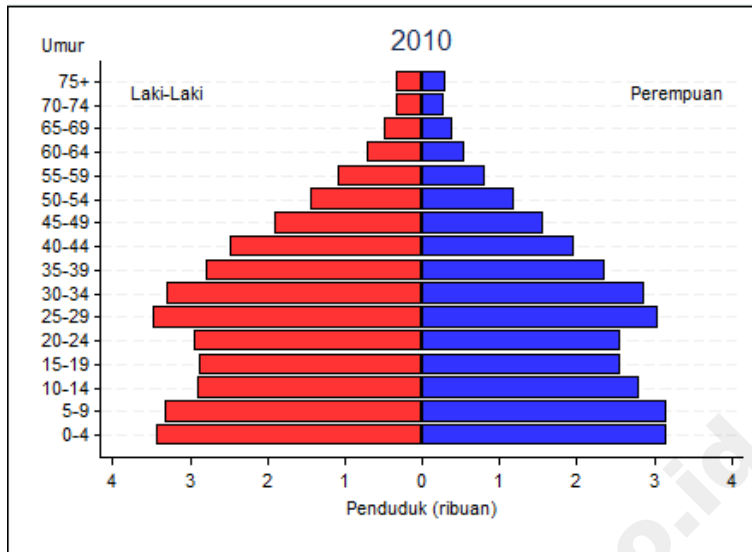
Gambar 1.5  
 PIRAMIDA PENDUDUK BARITO UTARA  
 TAHUN 2010 – 2020



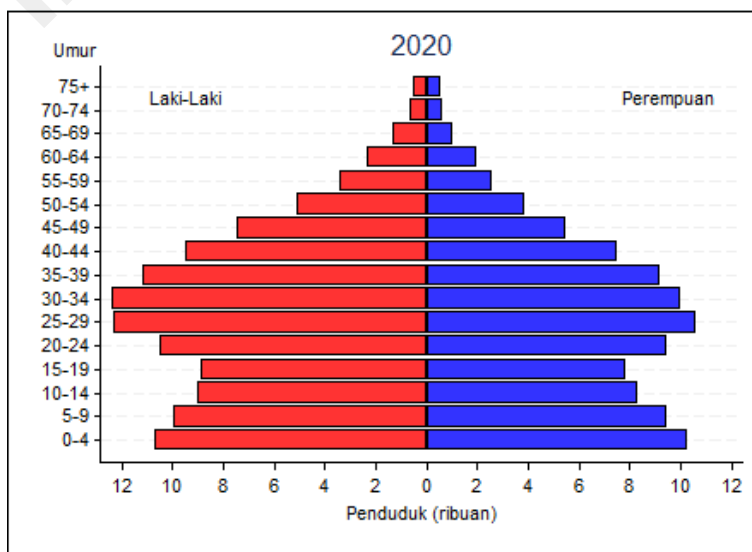
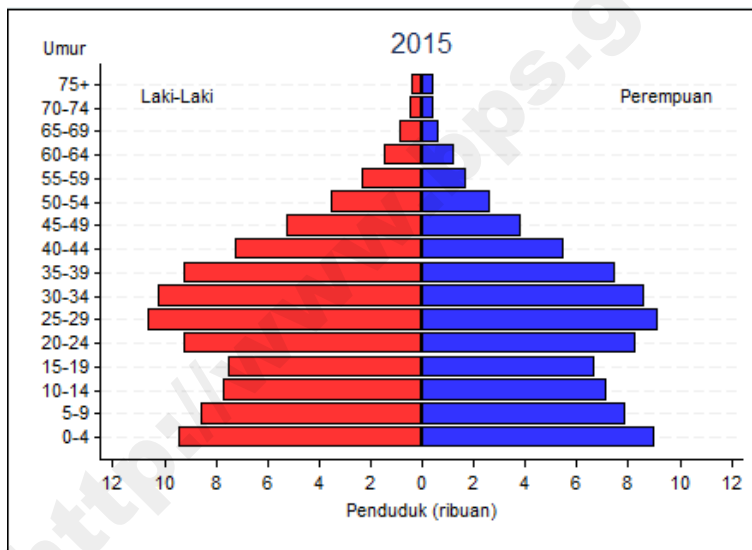
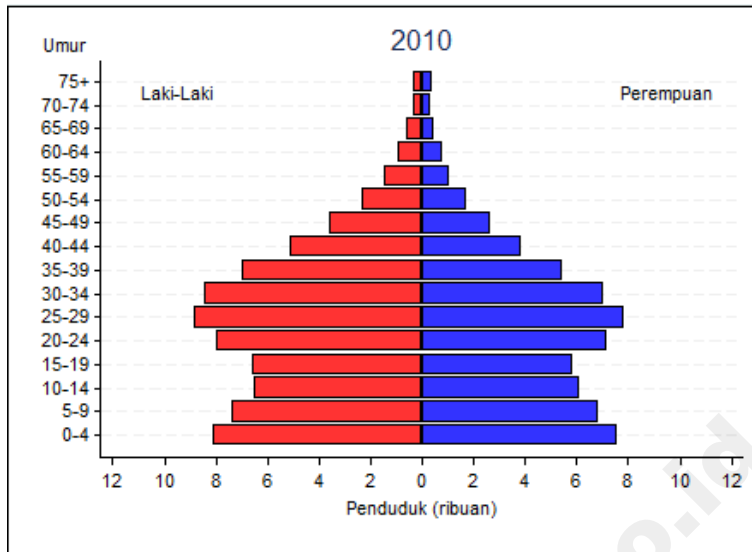
Gambar I.6  
 PIRAMIDA PENDUDUK SUKAMARA  
 TAHUN 2010 – 2020



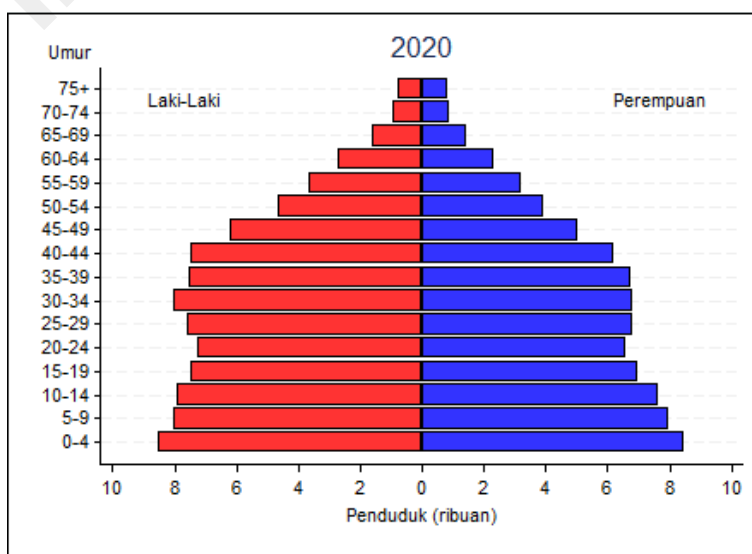
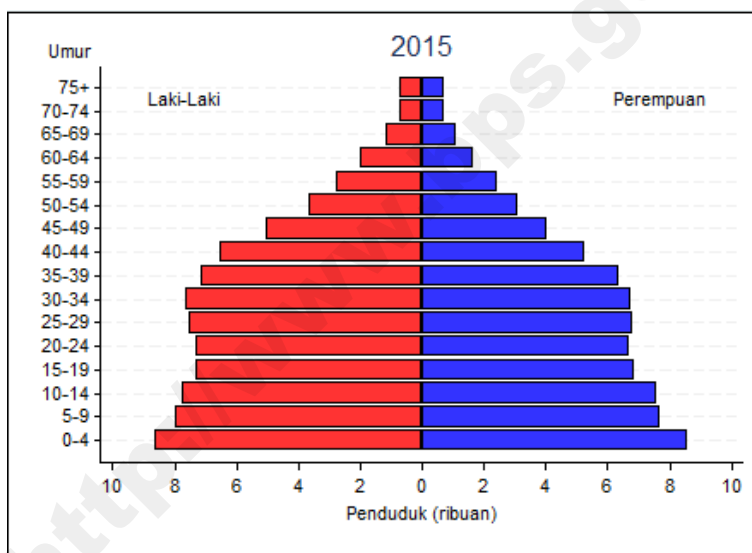
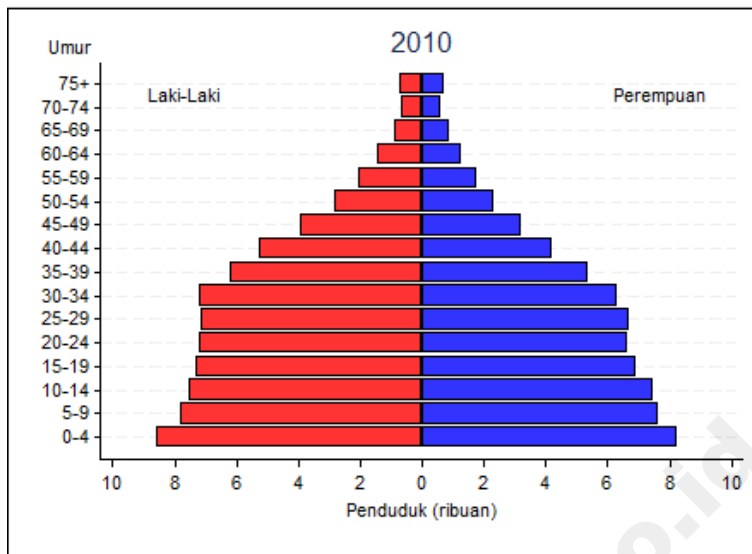
Gambar I.7  
 PIRAMIDA PENDUDUK LAMANDAU  
 TAHUN 2010 – 2020



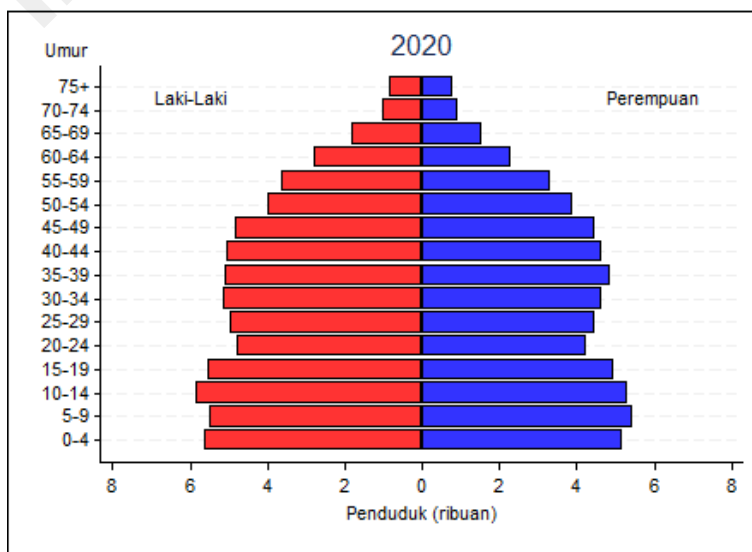
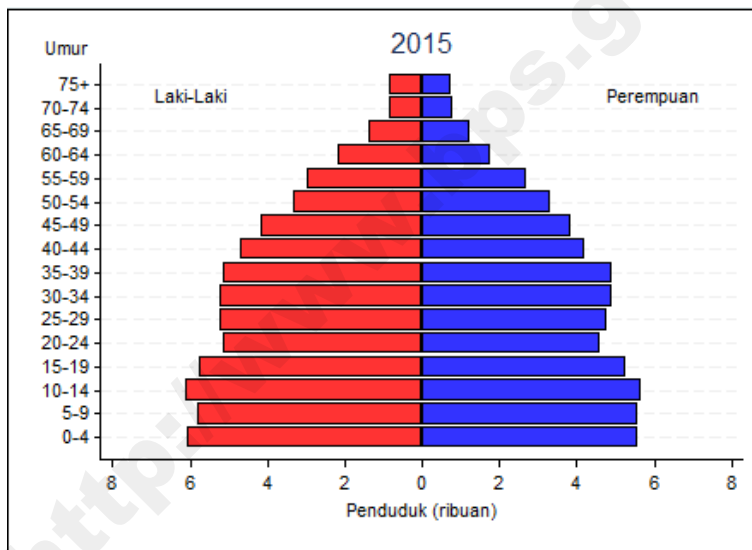
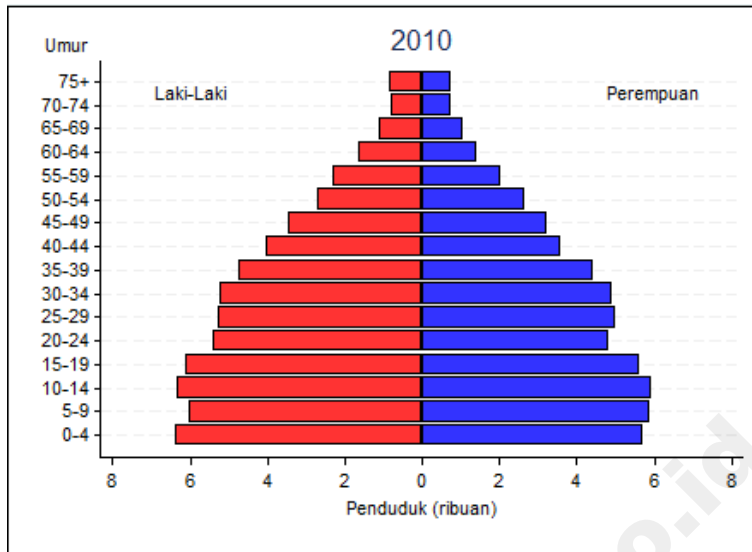
Gambar I.8  
 PIRAMIDA PENDUDUK SERUYAN  
 TAHUN 2010 – 2020



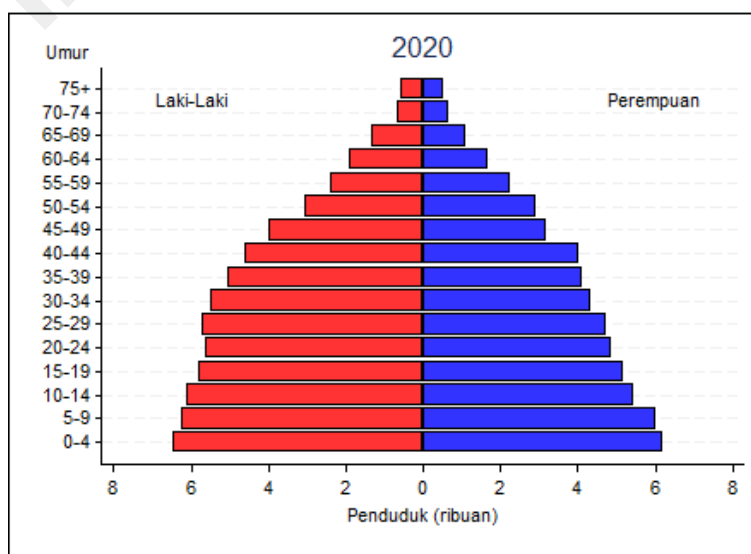
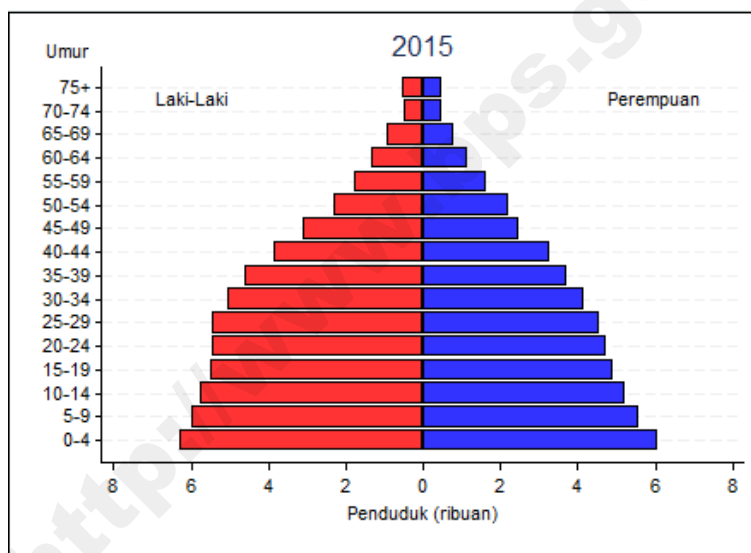
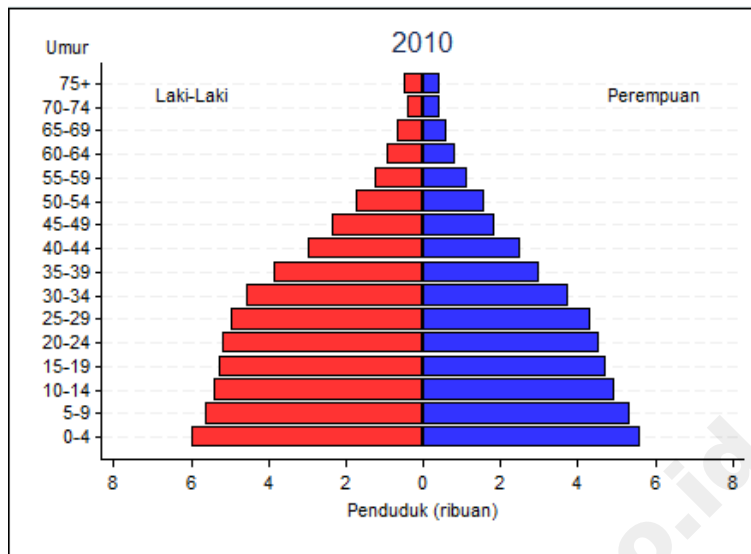
Gambar I.9  
 PIRAMIDA PENDUDUK KATINGAN  
 TAHUN 2010 – 2020



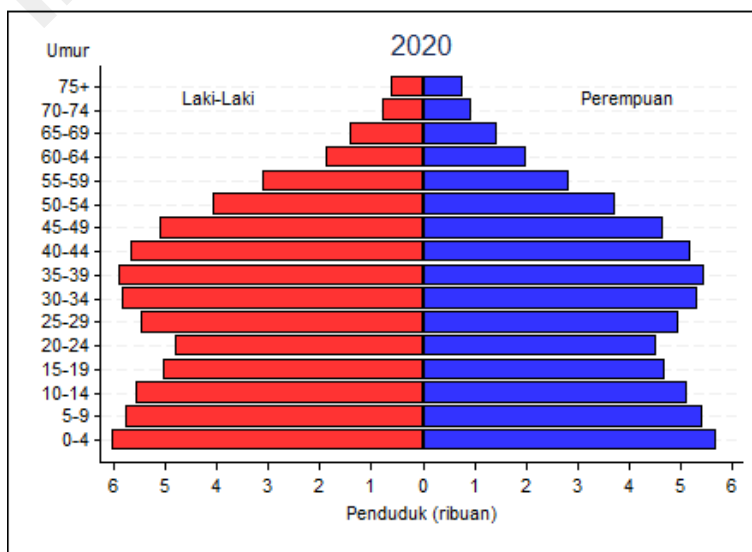
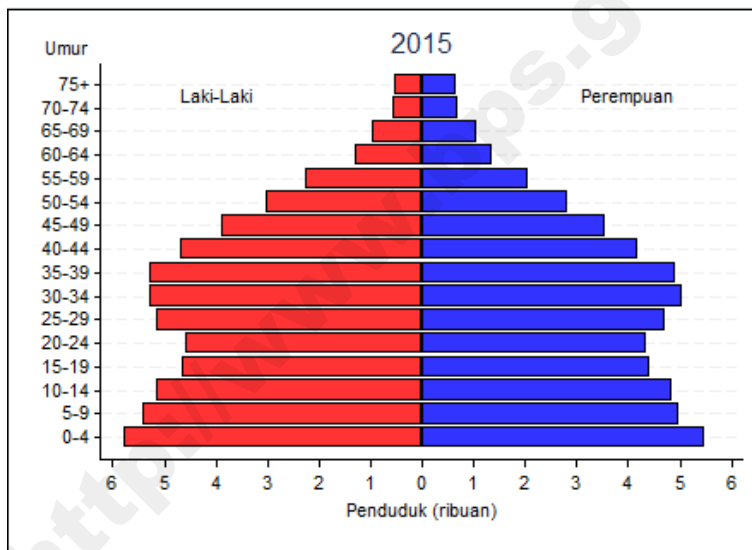
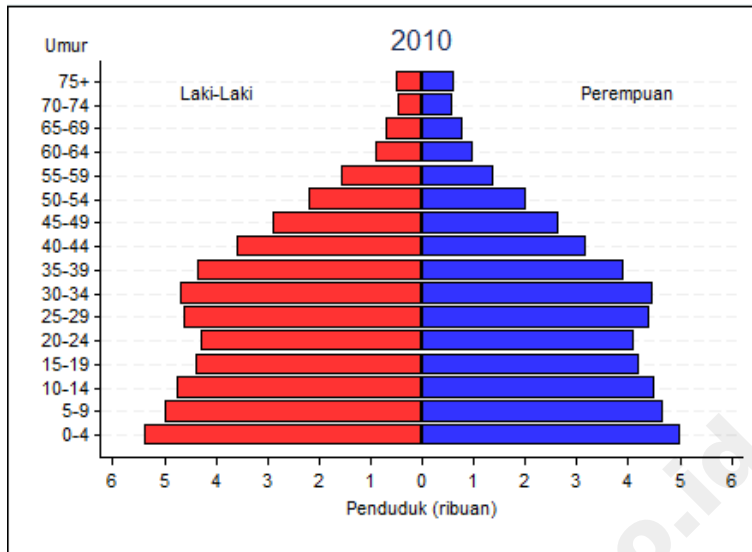
Gambar I.10  
 PIRAMIDA PENDUDUK PULANG PISAU  
 TAHUN 2010 – 2020



Gambar I.11  
 PIRAMIDA PENDUDUK GUNUNG MAS  
 TAHUN 2010 – 2020

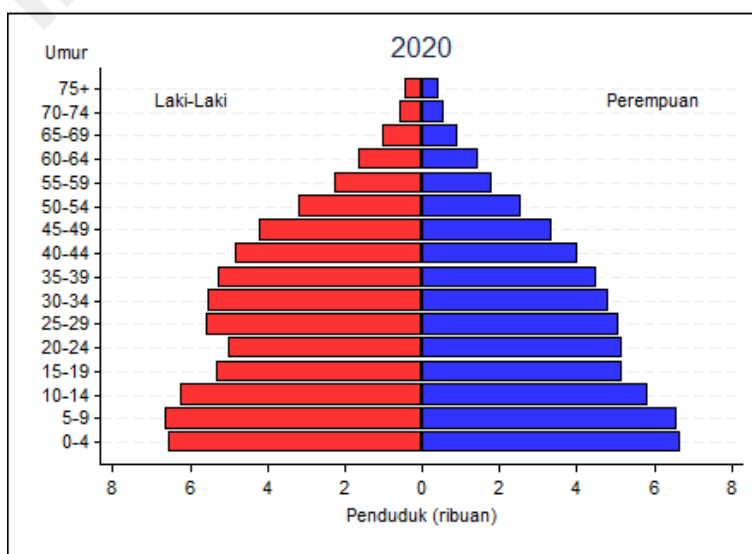
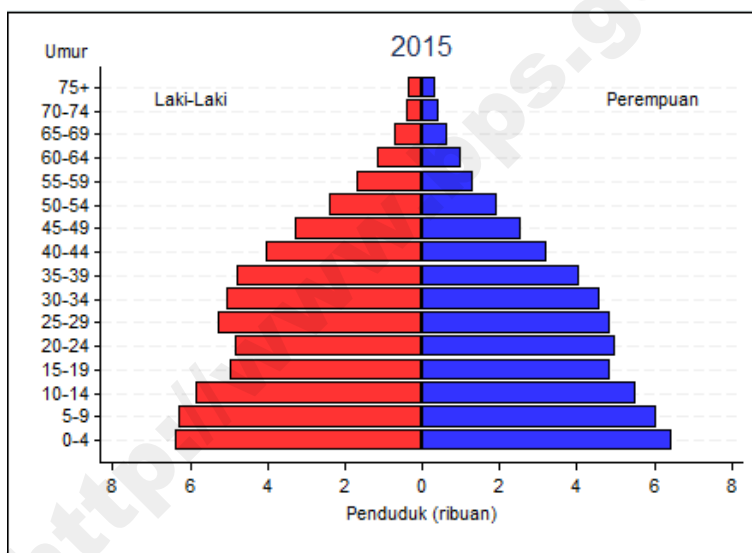
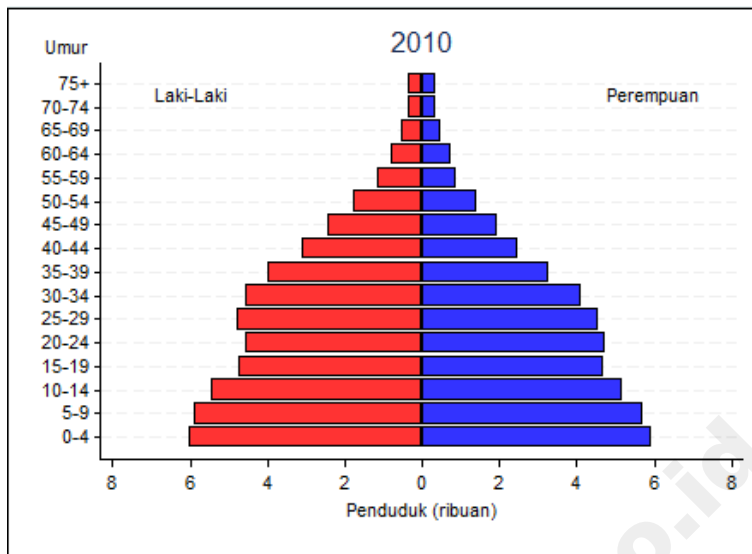


Gambar I.12  
 PIRAMIDA PENDUDUK BARITO TIMUR  
 TAHUN 2010 – 2020

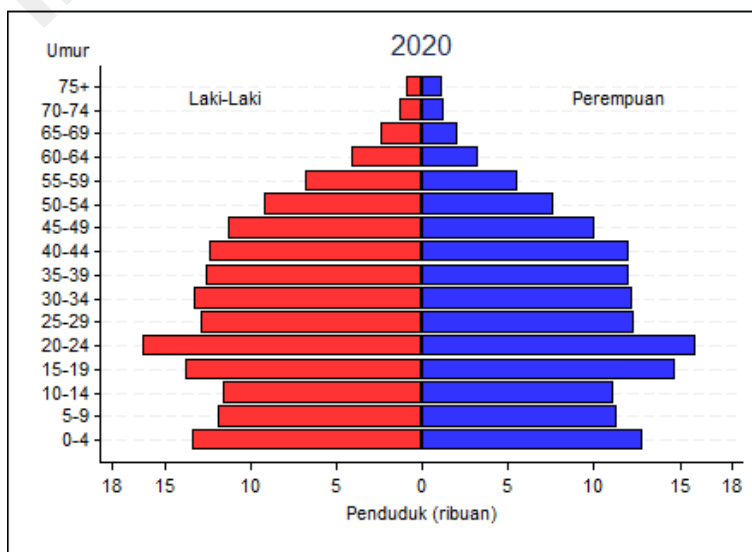
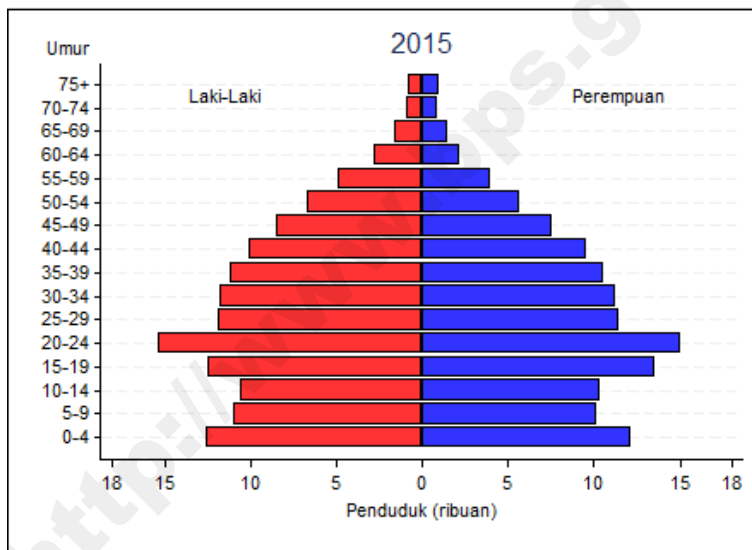
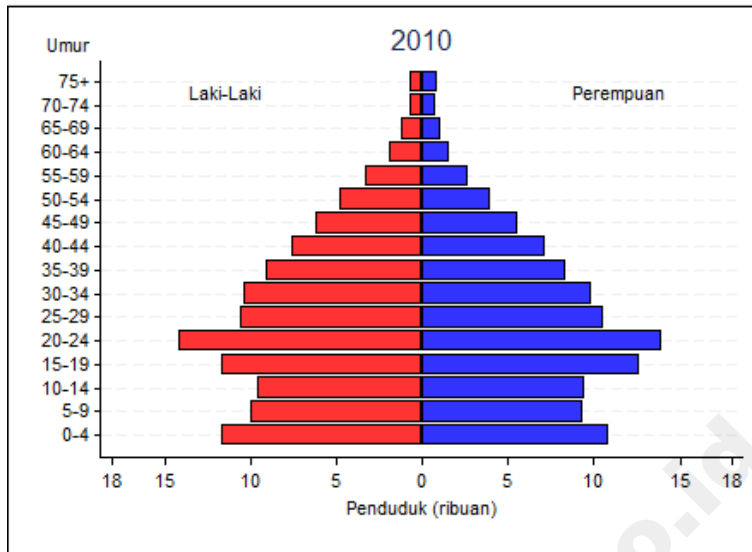




Gambar I.13  
 PIRAMIDA PENDUDUK MURUNG RAYA  
 TAHUN 2010 – 2020



Gambar I.14  
 PIRAMIDA PENDUDUK KOTA PALANGKA RAYA  
 TAHUN 2010 – 2020



Tabel II.1.1  
 PROYEKSI PENDUDUK  
 MENURUT JENIS KELAMIN DAN KELOMPOK UMUR  
 TAHUN 2010 - 2020

KOTAWARINGIN BARAT

LAKI-LAKI

KELOMPOK UMUR	2010	2011	2012	2013	2014	2015	2016	2017	2018	2019	2020
(1)	(2)	(3)	(4)	(5)	(6)	(7)	(8)	(9)	(10)	(11)	(12)
0-4	13.119	13.308	13.506	13.704	13.907	14.180	14.369	14.547	14.713	14.869	15.020
5-9	11.758	11.981	12.236	12.494	12.717	12.852	13.040	13.236	13.432	13.633	13.907
10-14	11.116	11.342	11.524	11.710	11.951	12.234	12.465	12.727	12.994	13.224	13.366
15-19	11.000	11.138	11.282	11.434	11.582	11.767	12.000	12.185	12.373	12.615	12.907
20-24	11.272	11.502	11.745	11.946	12.115	12.209	12.349	12.492	12.642	12.787	12.975
25-29	12.460	12.791	13.097	13.407	13.733	14.056	14.339	14.630	14.871	15.072	15.186
30-34	12.651	12.969	13.317	13.660	14.021	14.365	14.740	15.081	15.427	15.793	16.159
35-39	11.455	12.076	12.651	13.198	13.682	14.084	14.434	14.812	15.184	15.576	15.953
40-44	9.230	9.802	10.393	10.994	11.596	12.260	12.921	13.534	14.112	14.624	15.054
45-49	7.022	7.474	7.960	8.479	9.022	9.583	10.174	10.787	11.406	12.027	12.717
50-54	5.369	5.757	6.152	6.564	7.005	7.481	7.963	8.480	9.028	9.602	10.201
55-59	3.477	3.777	4.094	4.425	4.768	5.115	5.486	5.864	6.255	6.674	7.129
60-64	2.189	2.347	2.538	2.754	2.989	3.235	3.516	3.813	4.124	4.442	4.767
65-69	1.345	1.422	1.508	1.606	1.729	1.879	2.015	2.180	2.367	2.567	2.783
70-74	831	861	893	924	957	993	1.052	1.117	1.192	1.284	1.396
75+	898	911	924	945	968	999	1.028	1.064	1.094	1.135	1.177
<b>JUMLAH</b>	<b>125.192</b>	<b>129.458</b>	<b>133.820</b>	<b>138.244</b>	<b>142.742</b>	<b>147.292</b>	<b>151.891</b>	<b>156.549</b>	<b>161.214</b>	<b>165.924</b>	<b>170.697</b>

Tabel II.1.2  
 PROYEKSI PENDUDUK  
 MENURUT JENIS KELAMIN DAN KELOMPOK UMUR  
 TAHUN 2010 - 2020

KOTAWARINGIN BARAT

PEREMPUAN

KELOMPOK UMUR	2010	2011	2012	2013	2014	2015	2016	2017	2018	2019	2020
(1)	(2)	(3)	(4)	(5)	(6)	(7)	(8)	(9)	(10)	(11)	(12)
0-4	12.095	12.355	12.610	12.876	13.145	13.493	13.675	13.846	14.011	14.168	14.311
5-9	11.349	11.537	11.743	11.947	12.155	12.271	12.536	12.793	13.070	13.346	13.699
10-14	10.675	10.876	11.063	11.240	11.437	11.675	11.866	12.073	12.288	12.505	12.617
15-19	9.978	10.114	10.270	10.402	10.540	10.667	10.862	11.036	11.211	11.404	11.627
20-24	10.092	10.257	10.399	10.585	10.748	10.906	11.044	11.196	11.334	11.473	11.592
25-29	11.722	11.972	12.199	12.354	12.541	12.748	12.949	13.123	13.359	13.561	13.746
30-34	11.375	11.711	12.066	12.408	12.734	13.009	13.276	13.523	13.696	13.898	14.117
35-39	9.709	10.307	10.877	11.421	11.954	12.357	12.718	13.099	13.476	13.829	14.119
40-44	7.645	8.106	8.585	9.074	9.575	10.204	10.831	11.421	11.998	12.556	12.970
45-49	5.743	6.114	6.510	6.921	7.355	7.810	8.282	8.768	9.273	9.789	10.426
50-54	4.010	4.335	4.661	4.989	5.331	5.698	6.066	6.455	6.868	7.303	7.749
55-59	2.633	2.846	3.100	3.377	3.667	3.953	4.273	4.591	4.920	5.260	5.619
60-64	1.706	1.814	1.924	2.049	2.202	2.394	2.588	2.817	3.072	3.337	3.598
65-69	1.170	1.223	1.297	1.383	1.475	1.568	1.670	1.773	1.889	2.034	2.209
70-74	809	846	877	910	944	985	1.032	1.095	1.169	1.247	1.328
75+	1.001	1.018	1.035	1.060	1.084	1.111	1.155	1.191	1.234	1.277	1.327
<b>JUMLAH</b>	<b>111.712</b>	<b>115.431</b>	<b>119.216</b>	<b>122.996</b>	<b>126.887</b>	<b>130.849</b>	<b>134.823</b>	<b>138.800</b>	<b>142.868</b>	<b>146.987</b>	<b>151.054</b>

Tabel II.1.3  
PROYEKSI PENDUDUK  
MENURUT JENIS KELAMIN DAN KELOMPOK UMUR  
TAHUN 2010 - 2020

KOTAWARINGIN BARAT

LAKI-LAKI + PEREMPUAN

KELOMPOK UMUR	2010	2011	2012	2013	2014	2015	2016	2017	2018	2019	2020
(1)	(2)	(3)	(4)	(5)	(6)	(7)	(8)	(9)	(10)	(11)	(12)
0-4	25.214	25.663	26.116	26.580	27.052	27.673	28.044	28.393	28.724	29.037	29.331
5-9	23.107	23.518	23.979	24.441	24.872	25.123	25.576	26.029	26.502	26.979	27.606
10-14	21.791	22.218	22.587	22.950	23.388	23.909	24.331	24.800	25.282	25.729	25.983
15-19	20.978	21.252	21.552	21.836	22.122	22.434	22.862	23.221	23.584	24.019	24.534
20-24	21.364	21.759	22.144	22.531	22.863	23.115	23.393	23.688	23.976	24.260	24.567
25-29	24.182	24.763	25.296	25.761	26.274	26.804	27.288	27.753	28.230	28.633	28.932
30-34	24.026	24.680	25.383	26.068	26.755	27.374	28.016	28.604	29.123	29.691	30.276
35-39	21.164	22.383	23.528	24.619	25.636	26.441	27.152	27.911	28.660	29.405	30.072
40-44	16.875	17.908	18.978	20.068	21.171	22.464	23.752	24.955	26.110	27.180	28.024
45-49	12.765	13.588	14.470	15.400	16.377	17.393	18.456	19.555	20.679	21.816	23.143
50-54	9.379	10.092	10.813	11.553	12.336	13.179	14.029	14.935	15.896	16.905	17.950
55-59	6.110	6.623	7.194	7.802	8.435	9.068	9.759	10.455	11.175	11.934	12.748
60-64	3.895	4.161	4.462	4.803	5.191	5.629	6.104	6.630	7.196	7.779	8.365
65-69	2.515	2.645	2.805	2.989	3.204	3.447	3.685	3.953	4.256	4.601	4.992
70-74	1.640	1.707	1.770	1.834	1.901	1.978	2.084	2.212	2.361	2.531	2.724
75+	1.899	1.929	1.959	2.005	2.052	2.110	2.183	2.255	2.328	2.412	2.504
<b>JUMLAH</b>	<b>236.904</b>	<b>244.889</b>	<b>253.036</b>	<b>261.240</b>	<b>269.629</b>	<b>278.141</b>	<b>286.714</b>	<b>295.349</b>	<b>304.082</b>	<b>312.911</b>	<b>321.751</b>

Tabel II.2.1  
PROYEKSI PENDUDUK  
MENURUT JENIS KELAMIN DAN KELOMPOK UMUR  
TAHUN 2010 - 2020

KOTAWARINGIN TIMUR

LAKI-LAKI

KELOMPOK UMUR	2010	2011	2012	2013	2014	2015	2016	2017	2018	2019	2020
(1)	(2)	(3)	(4)	(5)	(6)	(7)	(8)	(9)	(10)	(11)	(12)
0-4	20.845	21.023	21.211	21.369	21.583	21.871	22.023	22.158	22.298	22.392	22.455
5-9	19.283	19.535	19.830	20.108	20.366	20.455	20.627	20.803	21.008	21.189	21.459
10-14	18.442	18.707	18.888	19.062	19.360	19.695	19.949	20.239	20.560	20.794	20.867
15-19	18.567	18.691	18.819	18.937	19.095	19.280	19.541	19.712	19.917	20.181	20.498
20-24	19.538	19.823	20.115	20.313	20.504	20.536	20.645	20.750	20.894	21.002	21.159
25-29	19.844	20.252	20.609	20.945	21.355	21.725	22.020	22.328	22.582	22.747	22.751
30-34	19.265	19.640	20.040	20.412	20.853	21.232	21.649	22.014	22.403	22.793	23.154
35-39	17.350	18.185	18.937	19.614	20.237	20.705	21.085	21.500	21.933	22.356	22.736
40-44	13.776	14.546	15.330	16.100	16.900	17.764	18.608	19.359	20.089	20.688	21.142
45-49	10.447	11.055	11.703	12.376	13.104	13.835	14.601	15.377	16.181	16.954	17.800
50-54	7.685	8.189	8.703	9.219	9.791	10.389	10.993	11.632	12.324	13.027	13.738
55-59	5.185	5.598	6.035	6.476	6.940	7.399	7.888	8.378	8.897	9.433	10.004
60-64	3.214	3.428	3.681	3.968	4.287	4.612	4.980	5.370	5.773	6.180	6.589
65-69	1.942	2.040	2.148	2.274	2.435	2.633	2.807	3.014	3.255	3.514	3.782
70-74	1.329	1.366	1.405	1.448	1.491	1.538	1.619	1.710	1.816	1.942	2.097
75+	1.307	1.323	1.351	1.374	1.392	1.418	1.462	1.495	1.530	1.573	1.613
<b>JUMLAH</b>	<b>198.019</b>	<b>203.401</b>	<b>208.805</b>	<b>213.995</b>	<b>219.693</b>	<b>225.087</b>	<b>230.497</b>	<b>235.839</b>	<b>241.460</b>	<b>246.765</b>	<b>251.844</b>

Tabel II.2.2  
PROYEKSI PENDUDUK  
MENURUT JENIS KELAMIN DAN KELOMPOK UMUR  
TAHUN 2010 - 2020

KOTAWARINGIN TIMUR

PEREMPUAN

KELOMPOK UMUR	2010	2011	2012	2013	2014	2015	2016	2017	2018	2019	2020
(1)	(2)	(3)	(4)	(5)	(6)	(7)	(8)	(9)	(10)	(11)	(12)
0-4	19.702	20.034	20.291	20.617	20.910	21.326	21.485	21.598	21.724	21.828	21.913
5-9	18.473	18.700	18.889	19.120	19.337	19.396	19.691	19.959	20.266	20.561	20.975
10-14	17.525	17.776	17.948	18.142	18.349	18.611	18.795	18.992	19.210	19.422	19.477
15-19	17.536	17.691	17.829	17.971	18.093	18.194	18.413	18.584	18.763	18.963	19.219
20-24	17.650	17.854	17.973	18.205	18.372	18.520	18.634	18.765	18.880	18.987	19.067
25-29	18.080	18.377	18.592	18.731	18.894	19.075	19.259	19.379	19.606	19.775	19.926
30-34	17.440	17.869	18.279	18.704	19.074	19.364	19.644	19.863	19.997	20.163	20.355
35-39	14.246	15.058	15.774	16.485	17.149	17.609	18.018	18.428	18.842	19.216	19.497
40-44	11.225	11.850	12.455	13.099	13.745	14.540	15.340	16.074	16.778	17.448	17.913
45-49	8.510	9.019	9.531	10.084	10.654	11.235	11.839	12.451	13.086	13.728	14.530
50-54	5.945	6.400	6.822	7.271	7.724	8.201	8.676	9.168	9.693	10.239	10.800
55-59	3.975	4.279	4.619	5.013	5.410	5.796	6.227	6.644	7.068	7.510	7.975
60-64	2.709	2.865	3.025	3.205	3.423	3.696	3.973	4.292	4.655	5.024	5.377
65-69	1.898	1.976	2.081	2.209	2.340	2.476	2.621	2.769	2.936	3.136	3.388
70-74	1.265	1.320	1.362	1.399	1.448	1.499	1.563	1.645	1.745	1.854	1.960
75+	1.451	1.476	1.472	1.488	1.536	1.551	1.601	1.644	1.700	1.747	1.813
<b>JUMLAH</b>	<b>177.630</b>	<b>182.544</b>	<b>186.942</b>	<b>191.743</b>	<b>196.458</b>	<b>201.089</b>	<b>205.779</b>	<b>210.255</b>	<b>214.949</b>	<b>219.601</b>	<b>224.185</b>

Tabel II.2.3  
PROYEKSI PENDUDUK  
MENURUT JENIS KELAMIN DAN KELOMPOK UMUR  
TAHUN 2010 - 2020

KOTAWARINGIN TIMUR

LAKI-LAKI + PEREMPUAN

KELOMPOK UMUR	2010	2011	2012	2013	2014	2015	2016	2017	2018	2019	2020
(1)	(2)	(3)	(4)	(5)	(6)	(7)	(8)	(9)	(10)	(11)	(12)
0-4	40.547	41.057	41.502	41.986	42.493	43.197	43.508	43.756	44.022	44.220	44.368
5-9	37.756	38.235	38.719	39.228	39.703	39.851	40.318	40.762	41.274	41.750	42.434
10-14	35.967	36.483	36.836	37.204	37.709	38.306	38.744	39.231	39.770	40.216	40.344
15-19	36.103	36.382	36.648	36.908	37.188	37.474	37.954	38.296	38.680	39.144	39.717
20-24	37.188	37.677	38.088	38.518	38.876	39.056	39.279	39.515	39.774	39.989	40.226
25-29	37.924	38.629	39.201	39.676	40.249	40.800	41.279	41.707	42.188	42.522	42.677
30-34	36.705	37.509	38.319	39.116	39.927	40.596	41.293	41.877	42.400	42.956	43.509
35-39	31.596	33.243	34.711	36.099	37.386	38.314	39.103	39.928	40.775	41.572	42.233
40-44	25.001	26.396	27.785	29.199	30.645	32.304	33.948	35.433	36.867	38.136	39.055
45-49	18.957	20.074	21.234	22.460	23.758	25.070	26.440	27.828	29.267	30.682	32.330
50-54	13.630	14.589	15.525	16.490	17.515	18.590	19.669	20.800	22.017	23.266	24.538
55-59	9.160	9.877	10.654	11.489	12.350	13.195	14.115	15.022	15.965	16.943	17.979
60-64	5.923	6.293	6.706	7.173	7.710	8.308	8.953	9.662	10.428	11.204	11.966
65-69	3.840	4.016	4.229	4.483	4.775	5.109	5.428	5.783	6.191	6.650	7.170
70-74	2.594	2.686	2.767	2.847	2.939	3.037	3.182	3.355	3.561	3.796	4.057
75+	2.758	2.799	2.823	2.862	2.928	2.969	3.063	3.139	3.230	3.320	3.426
<b>JUMLAH</b>	<b>375.649</b>	<b>385.945</b>	<b>395.747</b>	<b>405.738</b>	<b>416.151</b>	<b>426.176</b>	<b>436.276</b>	<b>446.094</b>	<b>456.409</b>	<b>466.366</b>	<b>476.029</b>



Tabel II.3.1  
PROYEKSI PENDUDUK  
MENURUT JENIS KELAMIN DAN KELOMPOK UMUR  
TAHUN 2010 - 2020

KAPUAS

LAKI-LAKI

KELOMPOK UMUR	2010	2011	2012	2013	2014	2015	2016	2017	2018	2019	2020
(1)	(2)	(3)	(4)	(5)	(6)	(7)	(8)	(9)	(10)	(11)	(12)
0-4	17.120	17.001	16.890	16.785	16.667	16.629	16.484	16.325	16.146	15.961	15.767
5-9	17.287	17.247	17.242	17.242	17.172	16.982	16.856	16.737	16.607	16.491	16.449
10-14	17.494	17.477	17.382	17.299	17.274	17.302	17.248	17.228	17.199	17.122	16.925
15-19	17.715	17.562	17.414	17.285	17.131	17.030	16.992	16.874	16.755	16.713	16.723
20-24	15.496	15.483	15.477	15.414	15.295	15.085	14.927	14.769	14.616	14.460	14.351
25-29	14.186	14.259	14.293	14.326	14.360	14.383	14.352	14.326	14.239	14.117	13.912
30-34	14.091	14.144	14.217	14.283	14.343	14.381	14.436	14.448	14.451	14.472	14.480
35-39	13.396	13.825	14.180	14.485	14.694	14.802	14.840	14.896	14.933	14.985	15.009
40-44	11.451	11.905	12.357	12.800	13.211	13.669	14.094	14.439	14.723	14.926	15.024
45-49	9.421	9.817	10.237	10.677	11.115	11.553	12.002	12.445	12.868	13.272	13.726
50-54	7.179	7.536	7.884	8.239	8.602	8.989	9.359	9.751	10.152	10.563	10.973
55-59	4.995	5.311	5.637	5.967	6.290	6.603	6.927	7.243	7.556	7.888	8.240
60-64	3.292	3.457	3.657	3.887	4.127	4.373	4.649	4.932	5.214	5.495	5.767
65-69	2.212	2.289	2.376	2.480	2.611	2.776	2.915	3.082	3.272	3.474	3.681
70-74	1.577	1.600	1.623	1.646	1.669	1.694	1.757	1.822	1.902	2.003	2.132
75+	1.397	1.391	1.385	1.386	1.390	1.397	1.410	1.425	1.440	1.454	1.475
<b>JUMLAH</b>	<b>168.309</b>	<b>170.304</b>	<b>172.251</b>	<b>174.201</b>	<b>175.951</b>	<b>177.648</b>	<b>179.248</b>	<b>180.742</b>	<b>182.073</b>	<b>183.396</b>	<b>184.634</b>

Tabel II.3.2  
 PROYEKSI PENDUDUK  
 MENURUT JENIS KELAMIN DAN KELOMPOK UMUR  
 TAHUN 2010 - 2020

KAPUAS

PEREMPUAN

KELOMPOK UMUR	2010	2011	2012	2013	2014	2015	2016	2017	2018	2019	2020
(1)	(2)	(3)	(4)	(5)	(6)	(7)	(8)	(9)	(10)	(11)	(12)
0-4	16.193	16.175	16.151	16.123	16.098	16.143	15.992	15.826	15.646	15.454	15.256
5-9	16.567	16.471	16.401	16.314	16.238	16.013	15.989	15.948	15.923	15.879	15.932
10-14	17.172	17.112	17.026	16.914	16.835	16.792	16.679	16.588	16.494	16.396	16.167
15-19	17.061	16.911	16.798	16.635	16.491	16.306	16.228	16.118	15.999	15.894	15.837
20-24	14.746	14.658	14.540	14.473	14.375	14.244	14.095	13.971	13.817	13.663	13.490
25-29	14.089	14.071	14.029	13.899	13.802	13.709	13.613	13.484	13.412	13.299	13.169
30-34	14.155	14.248	14.359	14.436	14.491	14.467	14.434	14.375	14.232	14.114	14.016
35-39	12.816	13.301	13.723	14.088	14.412	14.550	14.633	14.729	14.802	14.837	14.807
40-44	10.907	11.312	11.721	12.114	12.505	13.007	13.488	13.898	14.257	14.563	14.700
45-49	8.520	8.869	9.236	9.603	9.985	10.357	10.734	11.109	11.480	11.838	12.314
50-54	6.547	6.917	7.271	7.606	7.950	8.301	8.638	8.983	9.338	9.699	10.059
55-59	4.417	4.674	4.976	5.297	5.623	5.919	6.250	6.563	6.866	7.167	7.483
60-64	3.353	3.491	3.634	3.791	3.991	4.235	4.478	4.764	5.071	5.375	5.658
65-69	2.291	2.348	2.434	2.537	2.650	2.760	2.870	2.986	3.114	3.275	3.477
70-74	1.701	1.740	1.768	1.790	1.815	1.851	1.897	1.970	2.054	2.145	2.231
75+	1.764	1.744	1.738	1.737	1.743	1.747	1.777	1.790	1.804	1.826	1.855
<b>JUMLAH</b>	<b>162.299</b>	<b>164.042</b>	<b>165.805</b>	<b>167.357</b>	<b>169.004</b>	<b>170.401</b>	<b>171.795</b>	<b>173.102</b>	<b>174.309</b>	<b>175.424</b>	<b>176.451</b>

Tabel II.3.3  
PROYEKSI PENDUDUK  
MENURUT JENIS KELAMIN DAN KELOMPOK UMUR  
TAHUN 2010 - 2020

KAPUAS

LAKI-LAKI + PEREMPUAN

KELOMPOK UMUR	2010	2011	2012	2013	2014	2015	2016	2017	2018	2019	2020
(1)	(2)	(3)	(4)	(5)	(6)	(7)	(8)	(9)	(10)	(11)	(12)
0-4	33.313	33.176	33.041	32.908	32.765	32.772	32.476	32.151	31.792	31.415	31.023
5-9	33.854	33.718	33.643	33.556	33.410	32.995	32.845	32.685	32.530	32.370	32.381
10-14	34.666	34.589	34.408	34.213	34.109	34.094	33.927	33.816	33.693	33.518	33.092
15-19	34.776	34.473	34.212	33.920	33.622	33.336	33.220	32.992	32.754	32.607	32.560
20-24	30.242	30.141	30.017	29.887	29.670	29.329	29.022	28.740	28.433	28.123	27.841
25-29	28.275	28.330	28.322	28.225	28.162	28.092	27.965	27.810	27.651	27.416	27.081
30-34	28.246	28.392	28.576	28.719	28.834	28.848	28.870	28.823	28.683	28.586	28.496
35-39	26.212	27.126	27.903	28.573	29.106	29.352	29.473	29.625	29.735	29.822	29.816
40-44	22.358	23.217	24.078	24.914	25.716	26.676	27.582	28.337	28.980	29.489	29.724
45-49	17.941	18.686	19.473	20.280	21.100	21.910	22.736	23.554	24.348	25.110	26.040
50-54	13.726	14.453	15.155	15.845	16.552	17.290	17.997	18.734	19.490	20.262	21.032
55-59	9.412	9.985	10.613	11.264	11.913	12.522	13.177	13.806	14.422	15.055	15.723
60-64	6.645	6.948	7.291	7.678	8.118	8.608	9.127	9.696	10.285	10.870	11.425
65-69	4.503	4.637	4.810	5.017	5.261	5.536	5.785	6.068	6.386	6.749	7.158
70-74	3.278	3.340	3.391	3.436	3.484	3.545	3.654	3.792	3.956	4.148	4.363
75+	3.161	3.135	3.123	3.123	3.133	3.144	3.187	3.215	3.244	3.280	3.330
<b>JUMLAH</b>	<b>330.608</b>	<b>334.346</b>	<b>338.056</b>	<b>341.558</b>	<b>344.955</b>	<b>348.049</b>	<b>351.043</b>	<b>353.844</b>	<b>356.382</b>	<b>358.820</b>	<b>361.085</b>

Tabel II.4.1  
 PROYEKSI PENDUDUK  
 MENURUT JENIS KELAMIN DAN KELOMPOK UMUR  
 TAHUN 2010 - 2020

BARITO SELATAN

LAKI-LAKI

KELOMPOK UMUR	2010	2011	2012	2013	2014	2015	2016	2017	2018	2019	2020
(1)	(2)	(3)	(4)	(5)	(6)	(7)	(8)	(9)	(10)	(11)	(12)
0-4	6.759	6.721	6.682	6.646	6.603	6.594	6.542	6.484	6.421	6.355	6.284
5-9	6.889	6.881	6.884	6.891	6.866	6.796	6.752	6.710	6.666	6.626	6.617
10-14	6.287	6.289	6.260	6.236	6.229	6.245	6.231	6.229	6.227	6.204	6.140
15-19	5.704	5.662	5.617	5.582	5.534	5.506	5.500	5.467	5.434	5.426	5.436
20-24	5.030	5.032	5.033	5.019	4.981	4.917	4.871	4.824	4.778	4.734	4.703
25-29	5.546	5.582	5.598	5.618	5.634	5.647	5.641	5.636	5.607	5.565	5.489
30-34	5.753	5.782	5.816	5.848	5.875	5.896	5.923	5.934	5.942	5.959	5.968
35-39	5.301	5.477	5.621	5.749	5.834	5.881	5.901	5.930	5.952	5.978	5.994
40-44	4.493	4.677	4.858	5.037	5.201	5.385	5.559	5.700	5.818	5.906	5.950
45-49	3.651	3.809	3.977	4.150	4.323	4.498	4.676	4.854	5.023	5.188	5.370
50-54	2.924	3.073	3.219	3.366	3.515	3.677	3.832	3.996	4.165	4.338	4.512
55-59	1.869	1.990	2.114	2.241	2.363	2.482	2.606	2.728	2.849	2.977	3.114
60-64	1.256	1.320	1.399	1.488	1.580	1.676	1.783	1.894	2.004	2.115	2.222
65-69	802	830	863	901	949	1.010	1.063	1.124	1.194	1.269	1.346
70-74	587	597	606	615	624	634	658	684	714	753	801
75+	515	509	513	512	512	514	520	525	533	538	547
<b>JUMLAH</b>	<b>63.366</b>	<b>64.231</b>	<b>65.060</b>	<b>65.899</b>	<b>66.623</b>	<b>67.358</b>	<b>68.058</b>	<b>68.719</b>	<b>69.327</b>	<b>69.931</b>	<b>70.493</b>

Tabel II.4.2  
 PROYEKSI PENDUDUK  
 MENURUT JENIS KELAMIN DAN KELOMPOK UMUR  
 TAHUN 2010 - 2020

BARITO SELATAN

PEREMPUAN

KELOMPOK UMUR	2010	2011	2012	2013	2014	2015	2016	2017	2018	2019	2020
(1)	(2)	(3)	(4)	(5)	(6)	(7)	(8)	(9)	(10)	(11)	(12)
0-4	6.416	6.413	6.409	6.409	6.401	6.428	6.376	6.317	6.255	6.179	6.109
5-9	6.618	6.584	6.561	6.537	6.508	6.427	6.424	6.416	6.416	6.401	6.429
10-14	6.107	6.090	6.062	6.033	6.007	6.000	5.968	5.942	5.916	5.884	5.809
15-19	5.601	5.556	5.524	5.479	5.433	5.381	5.360	5.330	5.300	5.266	5.253
20-24	5.170	5.144	5.110	5.094	5.060	5.021	4.973	4.935	4.889	4.835	4.782
25-29	5.532	5.529	5.517	5.475	5.437	5.411	5.377	5.332	5.314	5.271	5.227
30-34	5.526	5.567	5.615	5.655	5.680	5.677	5.672	5.652	5.604	5.556	5.523
35-39	5.043	5.239	5.409	5.562	5.692	5.756	5.796	5.840	5.877	5.894	5.892
40-44	3.938	4.088	4.236	4.387	4.529	4.721	4.900	5.057	5.198	5.311	5.370
45-49	3.396	3.539	3.685	3.841	3.995	4.148	4.307	4.460	4.617	4.761	4.961
50-54	2.615	2.764	2.907	3.047	3.186	3.330	3.470	3.613	3.762	3.908	4.058
55-59	1.723	1.824	1.942	2.069	2.197	2.318	2.450	2.574	2.697	2.816	2.944
60-64	1.174	1.224	1.273	1.329	1.400	1.486	1.575	1.675	1.788	1.895	1.999
65-69	864	887	919	960	1.004	1.047	1.089	1.135	1.188	1.250	1.329
70-74	690	707	718	729	739	754	775	803	840	877	916
75+	726	718	713	714	718	724	734	743	748	761	771
<b>JUMLAH</b>	<b>61.139</b>	<b>61.873</b>	<b>62.600</b>	<b>63.320</b>	<b>63.986</b>	<b>64.629</b>	<b>65.246</b>	<b>65.824</b>	<b>66.409</b>	<b>66.865</b>	<b>67.372</b>

Tabel II.4.3  
 PROYEKSI PENDUDUK  
 MENURUT JENIS KELAMIN DAN KELOMPOK UMUR  
 TAHUN 2010 - 2020

BARITO SELATAN

LAKI-LAKI + PEREMPUAN

KELOMPOK UMUR	2010	2011	2012	2013	2014	2015	2016	2017	2018	2019	2020
(1)	(2)	(3)	(4)	(5)	(6)	(7)	(8)	(9)	(10)	(11)	(12)
0-4	13.175	13.134	13.091	13.055	13.004	13.022	12.918	12.801	12.676	12.534	12.393
5-9	13.507	13.465	13.445	13.428	13.374	13.223	13.176	13.126	13.082	13.027	13.046
10-14	12.394	12.379	12.322	12.269	12.236	12.245	12.199	12.171	12.143	12.088	11.949
15-19	11.305	11.218	11.141	11.061	10.967	10.887	10.860	10.797	10.734	10.692	10.689
20-24	10.200	10.176	10.143	10.113	10.041	9.938	9.844	9.759	9.667	9.569	9.485
25-29	11.078	11.111	11.115	11.093	11.071	11.058	11.018	10.968	10.921	10.836	10.716
30-34	11.279	11.349	11.431	11.503	11.555	11.573	11.595	11.586	11.546	11.515	11.491
35-39	10.344	10.716	11.030	11.311	11.526	11.637	11.697	11.770	11.829	11.872	11.886
40-44	8.431	8.765	9.094	9.424	9.730	10.106	10.459	10.757	11.016	11.217	11.320
45-49	7.047	7.348	7.662	7.991	8.318	8.646	8.983	9.314	9.640	9.949	10.331
50-54	5.539	5.837	6.126	6.413	6.701	7.007	7.302	7.609	7.927	8.246	8.570
55-59	3.592	3.814	4.056	4.310	4.560	4.800	5.056	5.302	5.546	5.793	6.058
60-64	2.430	2.544	2.672	2.817	2.980	3.162	3.358	3.569	3.792	4.010	4.221
65-69	1.666	1.717	1.782	1.861	1.953	2.057	2.152	2.259	2.382	2.519	2.675
70-74	1.277	1.304	1.324	1.344	1.363	1.388	1.433	1.487	1.554	1.630	1.717
75+	1.241	1.227	1.226	1.226	1.230	1.238	1.254	1.268	1.281	1.299	1.318
<b>JUMLAH</b>	<b>124.505</b>	<b>126.104</b>	<b>127.660</b>	<b>129.219</b>	<b>130.609</b>	<b>131.987</b>	<b>133.304</b>	<b>134.543</b>	<b>135.736</b>	<b>136.796</b>	<b>137.865</b>

Tabel II.5.1  
 PROYEKSI PENDUDUK  
 MENURUT JENIS KELAMIN DAN KELOMPOK UMUR  
 TAHUN 2010 - 2020

BARITO UTARA

LAKI-LAKI

KELOMPOK UMUR	2010	2011	2012	2013	2014	2015	2016	2017	2018	2019	2020
(1)	(2)	(3)	(4)	(5)	(6)	(7)	(8)	(9)	(10)	(11)	(12)
0-4	6.543	6.488	6.435	6.381	6.327	6.304	6.241	6.173	6.097	6.021	5.943
5-9	6.752	6.726	6.712	6.698	6.662	6.579	6.522	6.467	6.410	6.358	6.336
10-14	6.387	6.372	6.327	6.283	6.265	6.266	6.239	6.223	6.205	6.171	6.094
15-19	5.855	5.795	5.736	5.682	5.623	5.583	5.563	5.517	5.471	5.452	5.450
20-24	5.301	5.288	5.278	5.246	5.198	5.120	5.058	4.999	4.940	4.884	4.841
25-29	5.591	5.611	5.616	5.617	5.623	5.622	5.603	5.586	5.545	5.493	5.406
30-34	5.814	5.829	5.849	5.863	5.879	5.886	5.900	5.898	5.892	5.896	5.893
35-39	5.372	5.535	5.668	5.779	5.853	5.887	5.895	5.909	5.917	5.932	5.935
40-44	4.679	4.857	5.034	5.203	5.364	5.539	5.705	5.836	5.944	6.021	6.054
45-49	3.616	3.762	3.917	4.077	4.240	4.399	4.564	4.725	4.881	5.029	5.196
50-54	2.696	2.826	2.953	3.078	3.210	3.349	3.482	3.623	3.767	3.916	4.063
55-59	1.673	1.777	1.884	1.989	2.094	2.195	2.301	2.402	2.502	2.609	2.723
60-64	1.203	1.261	1.332	1.413	1.498	1.585	1.683	1.783	1.883	1.982	2.079
65-69	733	757	784	817	858	912	956	1.010	1.071	1.136	1.203
70-74	491	497	504	510	516	524	541	561	585	617	654
75+	465	459	453	453	459	461	462	467	471	472	479
<b>JUMLAH</b>	<b>63.171</b>	<b>63.840</b>	<b>64.482</b>	<b>65.089</b>	<b>65.669</b>	<b>66.211</b>	<b>66.715</b>	<b>67.179</b>	<b>67.581</b>	<b>67.989</b>	<b>68.349</b>

Tabel II.5.2  
 PROYEKSI PENDUDUK  
 MENURUT JENIS KELAMIN DAN KELOMPOK UMUR  
 TAHUN 2010 - 2020

BARITO UTARA

PEREMPUAN

KELOMPOK UMUR	2010	2011	2012	2013	2014	2015	2016	2017	2018	2019	2020
(1)	(2)	(3)	(4)	(5)	(6)	(7)	(8)	(9)	(10)	(11)	(12)
0-4	6.199	6.187	6.169	6.158	6.142	6.157	6.096	6.033	5.962	5.885	5.806
5-9	6.332	6.288	6.254	6.219	6.182	6.096	6.083	6.069	6.056	6.036	6.053
10-14	6.226	6.198	6.158	6.117	6.082	6.065	6.019	5.988	5.951	5.911	5.827
15-19	5.661	5.607	5.564	5.507	5.454	5.390	5.362	5.328	5.285	5.246	5.225
20-24	5.147	5.112	5.066	5.040	5.001	4.953	4.901	4.858	4.801	4.743	4.683
25-29	5.549	5.538	5.514	5.462	5.418	5.381	5.340	5.290	5.259	5.210	5.159
30-34	5.372	5.403	5.439	5.466	5.483	5.471	5.456	5.432	5.372	5.321	5.279
35-39	5.012	5.198	5.358	5.497	5.620	5.673	5.703	5.741	5.764	5.774	5.761
40-44	4.009	4.155	4.297	4.440	4.578	4.765	4.939	5.095	5.223	5.333	5.382
45-49	3.138	3.266	3.397	3.531	3.664	3.802	3.938	4.078	4.209	4.338	4.512
50-54	1.989	2.101	2.207	2.310	2.411	2.518	2.619	2.724	2.831	2.937	3.045
55-59	1.360	1.437	1.528	1.628	1.726	1.817	1.916	2.014	2.106	2.198	2.293
60-64	1.015	1.057	1.096	1.141	1.199	1.272	1.344	1.430	1.521	1.612	1.697
65-69	741	760	787	819	856	889	926	962	1.003	1.054	1.118
70-74	465	477	483	490	497	504	518	538	560	582	607
75+	524	515	518	519	512	515	525	528	535	544	551
<b>JUMLAH</b>	<b>58.739</b>	<b>59.299</b>	<b>59.835</b>	<b>60.344</b>	<b>60.825</b>	<b>61.268</b>	<b>61.685</b>	<b>62.108</b>	<b>62.438</b>	<b>62.724</b>	<b>62.998</b>



Tabel II.5.3  
PROYEKSI PENDUDUK  
MENURUT JENIS KELAMIN DAN KELOMPOK UMUR  
TAHUN 2010 - 2020

BARITO UTARA

LAKI-LAKI + PEREMPUAN

KELOMPOK UMUR	2010	2011	2012	2013	2014	2015	2016	2017	2018	2019	2020
(1)	(2)	(3)	(4)	(5)	(6)	(7)	(8)	(9)	(10)	(11)	(12)
0-4	12.742	12.675	12.604	12.539	12.469	12.461	12.337	12.206	12.059	11.906	11.749
5-9	13.084	13.014	12.966	12.917	12.844	12.675	12.605	12.536	12.466	12.394	12.389
10-14	12.613	12.570	12.485	12.400	12.347	12.331	12.258	12.211	12.156	12.082	11.921
15-19	11.516	11.402	11.300	11.189	11.077	10.973	10.925	10.845	10.756	10.698	10.675
20-24	10.448	10.400	10.344	10.286	10.199	10.073	9.959	9.857	9.741	9.627	9.524
25-29	11.140	11.149	11.130	11.079	11.041	11.003	10.943	10.876	10.804	10.703	10.565
30-34	11.186	11.232	11.288	11.329	11.362	11.357	11.356	11.330	11.264	11.217	11.172
35-39	10.384	10.733	11.026	11.276	11.473	11.560	11.598	11.650	11.681	11.706	11.696
40-44	8.688	9.012	9.331	9.643	9.942	10.304	10.644	10.931	11.167	11.354	11.436
45-49	6.754	7.028	7.314	7.608	7.904	8.201	8.502	8.803	9.090	9.367	9.708
50-54	4.685	4.927	5.160	5.388	5.621	5.867	6.101	6.347	6.598	6.853	7.108
55-59	3.033	3.214	3.412	3.617	3.820	4.012	4.217	4.416	4.608	4.807	5.016
60-64	2.218	2.318	2.428	2.554	2.697	2.857	3.027	3.213	3.404	3.594	3.776
65-69	1.474	1.517	1.571	1.636	1.714	1.801	1.882	1.972	2.074	2.190	2.321
70-74	956	974	987	1.000	1.013	1.028	1.059	1.099	1.145	1.199	1.261
75+	989	974	971	972	971	976	987	995	1.006	1.016	1.030
<b>JUMLAH</b>	<b>121.910</b>	<b>123.139</b>	<b>124.317</b>	<b>125.433</b>	<b>126.494</b>	<b>127.479</b>	<b>128.400</b>	<b>129.287</b>	<b>130.019</b>	<b>130.713</b>	<b>131.347</b>

Tabel II.6.1  
 PROYEKSI PENDUDUK  
 MENURUT JENIS KELAMIN DAN KELOMPOK UMUR  
 TAHUN 2010 - 2020

SUKAMARA

LAKI-LAKI

KELOMPOK UMUR	2010	2011	2012	2013	2014	2015	2016	2017	2018	2019	2020
(1)	(2)	(3)	(4)	(5)	(6)	(7)	(8)	(9)	(10)	(11)	(12)
0-4	2.655	2.720	2.786	2.855	2.926	3.012	3.082	3.150	3.217	3.283	3.348
5-9	2.365	2.434	2.509	2.587	2.660	2.714	2.781	2.850	2.920	2.992	3.083
10-14	2.119	2.183	2.240	2.298	2.369	2.448	2.518	2.597	2.677	2.751	2.807
15-19	2.204	2.254	2.305	2.359	2.412	2.474	2.547	2.612	2.679	2.758	2.849
20-24	2.395	2.468	2.545	2.614	2.677	2.724	2.782	2.841	2.904	2.965	3.038
25-29	2.595	2.689	2.781	2.873	2.973	3.072	3.165	3.260	3.346	3.424	3.485
30-34	2.240	2.319	2.405	2.491	2.582	2.670	2.767	2.858	2.952	3.051	3.153
35-39	2.145	2.283	2.414	2.544	2.662	2.767	2.864	2.967	3.071	3.181	3.290
40-44	1.650	1.769	1.894	2.023	2.155	2.300	2.447	2.588	2.726	2.851	2.965
45-49	1.208	1.298	1.397	1.503	1.613	1.731	1.856	1.986	2.121	2.257	2.411
50-54	868	940	1.013	1.093	1.177	1.270	1.364	1.466	1.576	1.694	1.817
55-59	524	576	630	688	748	811	877	947	1.020	1.098	1.185
60-64	417	452	493	540	592	647	711	778	849	924	1.001
65-69	229	244	262	281	306	336	363	396	435	477	522
70-74	181	190	198	207	217	228	244	260	281	305	335
75+	172	176	182	189	190	200	208	217	224	236	250
<b>JUMLAH</b>	<b>23.967</b>	<b>24.995</b>	<b>26.054</b>	<b>27.145</b>	<b>28.259</b>	<b>29.404</b>	<b>30.576</b>	<b>31.773</b>	<b>32.998</b>	<b>34.247</b>	<b>35.539</b>

Tabel II.6.2  
 PROYEKSI PENDUDUK  
 MENURUT JENIS KELAMIN DAN KELOMPOK UMUR  
 TAHUN 2010 - 2020

SUKAMARA

PEREMPUAN

KELOMPOK UMUR	2010	2011	2012	2013	2014	2015	2016	2017	2018	2019	2020
(1)	(2)	(3)	(4)	(5)	(6)	(7)	(8)	(9)	(10)	(11)	(12)
0-4	2.471	2.548	2.628	2.710	2.793	2.895	2.962	3.033	3.097	3.158	3.223
5-9	2.256	2.315	2.380	2.446	2.512	2.560	2.639	2.724	2.809	2.893	2.999
10-14	2.083	2.143	2.201	2.259	2.321	2.393	2.456	2.525	2.594	2.662	2.713
15-19	1.911	1.956	2.006	2.053	2.100	2.146	2.207	2.267	2.323	2.383	2.454
20-24	2.158	2.215	2.268	2.331	2.390	2.447	2.501	2.567	2.621	2.676	2.731
25-29	2.323	2.395	2.464	2.522	2.583	2.651	2.717	2.785	2.861	2.929	2.998
30-34	2.122	2.206	2.294	2.383	2.468	2.547	2.625	2.705	2.765	2.831	2.904
35-39	1.725	1.850	1.972	2.092	2.212	2.308	2.399	2.499	2.595	2.684	2.770
40-44	1.332	1.425	1.524	1.629	1.735	1.866	2.001	2.135	2.262	2.388	2.490
45-49	909	979	1.051	1.128	1.212	1.299	1.391	1.489	1.589	1.693	1.821
50-54	638	696	758	817	883	952	1.025	1.103	1.184	1.267	1.359
55-59	432	470	518	570	624	679	742	806	871	941	1.014
60-64	333	358	384	413	447	491	535	591	651	712	776
65-69	193	204	218	236	253	271	293	314	337	365	401
70-74	139	147	153	161	169	176	187	202	217	233	250
75+	201	207	209	213	229	236	248	257	270	280	290
<b>JUMLAH</b>	<b>21.226</b>	<b>22.114</b>	<b>23.028</b>	<b>23.963</b>	<b>24.931</b>	<b>25.917</b>	<b>26.928</b>	<b>28.002</b>	<b>29.046</b>	<b>30.095</b>	<b>31.193</b>

Tabel II.6.3  
 PROYEKSI PENDUDUK  
 MENURUT JENIS KELAMIN DAN KELOMPOK UMUR  
 TAHUN 2010 - 2020

SUKAMARA

LAKI-LAKI + PEREMPUAN

KELOMPOK UMUR	2010	2011	2012	2013	2014	2015	2016	2017	2018	2019	2020
(1)	(2)	(3)	(4)	(5)	(6)	(7)	(8)	(9)	(10)	(11)	(12)
0-4	5.126	5.268	5.414	5.565	5.719	5.907	6.044	6.183	6.314	6.441	6.571
5-9	4.621	4.749	4.889	5.033	5.172	5.274	5.420	5.574	5.729	5.885	6.082
10-14	4.202	4.326	4.441	4.557	4.690	4.841	4.974	5.122	5.271	5.413	5.520
15-19	4.115	4.210	4.311	4.412	4.512	4.620	4.754	4.879	5.002	5.141	5.303
20-24	4.553	4.683	4.813	4.945	5.067	5.171	5.283	5.408	5.525	5.641	5.769
25-29	4.918	5.084	5.245	5.395	5.556	5.723	5.882	6.045	6.207	6.353	6.483
30-34	4.362	4.525	4.699	4.874	5.050	5.217	5.392	5.563	5.717	5.882	6.057
35-39	3.870	4.133	4.386	4.636	4.874	5.075	5.263	5.466	5.666	5.865	6.060
40-44	2.982	3.194	3.418	3.652	3.890	4.166	4.448	4.723	4.988	5.239	5.455
45-49	2.117	2.277	2.448	2.631	2.825	3.030	3.247	3.475	3.710	3.950	4.232
50-54	1.506	1.636	1.771	1.910	2.060	2.222	2.389	2.569	2.760	2.961	3.176
55-59	956	1.046	1.148	1.258	1.372	1.490	1.619	1.753	1.891	2.039	2.199
60-64	750	810	877	953	1.039	1.138	1.246	1.369	1.500	1.636	1.777
65-69	422	448	480	517	559	607	656	710	772	842	923
70-74	320	337	351	368	386	404	431	462	498	538	585
75+	373	383	391	402	419	436	456	474	494	516	540
<b>JUMLAH</b>	<b>45.193</b>	<b>47.109</b>	<b>49.082</b>	<b>51.108</b>	<b>53.190</b>	<b>55.321</b>	<b>57.504</b>	<b>59.775</b>	<b>62.044</b>	<b>64.342</b>	<b>66.732</b>

Tabel II.7.1  
 PROYEKSI PENDUDUK  
 MENURUT JENIS KELAMIN DAN KELOMPOK UMUR  
 TAHUN 2010 - 2020

LAMANDAU

LAKI-LAKI

KELOMPOK UMUR	2010	2011	2012	2013	2014	2015	2016	2017	2018	2019	2020
(1)	(2)	(3)	(4)	(5)	(6)	(7)	(8)	(9)	(10)	(11)	(12)
0-4	3.428	3.471	3.517	3.567	3.603	3.668	3.708	3.746	3.778	3.805	3.837
5-9	3.326	3.384	3.449	3.521	3.567	3.599	3.643	3.689	3.734	3.777	3.845
10-14	2.894	2.948	2.989	3.038	3.084	3.153	3.206	3.265	3.324	3.372	3.401
15-19	2.871	2.901	2.933	2.973	2.996	3.040	3.093	3.132	3.172	3.225	3.293
20-24	2.948	3.004	3.061	3.112	3.141	3.162	3.190	3.218	3.249	3.276	3.318
25-29	3.468	3.554	3.631	3.717	3.789	3.873	3.940	4.011	4.066	4.109	4.131
30-34	3.292	3.368	3.452	3.541	3.616	3.700	3.789	3.866	3.945	4.025	4.110
35-39	2.801	2.948	3.081	3.215	3.316	3.408	3.485	3.567	3.647	3.729	3.811
40-44	2.489	2.639	2.792	2.954	3.100	3.274	3.441	3.595	3.739	3.863	3.968
45-49	1.912	2.032	2.159	2.299	2.434	2.582	2.736	2.892	3.051	3.207	3.384
50-54	1.441	1.543	1.646	1.757	1.864	1.989	2.111	2.244	2.383	2.525	2.677
55-59	1.077	1.168	1.264	1.367	1.464	1.569	1.678	1.789	1.905	2.025	2.158
60-64	714	764	824	894	965	1.044	1.132	1.224	1.321	1.419	1.519
65-69	487	514	544	580	621	673	722	778	842	911	986
70-74	328	339	350	363	374	388	410	434	462	495	538
75+	329	332	340	344	351	358	367	379	397	408	422
<b>JUMLAH</b>	<b>33.805</b>	<b>34.909</b>	<b>36.032</b>	<b>37.242</b>	<b>38.285</b>	<b>39.480</b>	<b>40.651</b>	<b>41.829</b>	<b>43.015</b>	<b>44.171</b>	<b>45.398</b>

Tabel II.7.2  
 PROYEKSI PENDUDUK  
 MENURUT JENIS KELAMIN DAN KELOMPOK UMUR  
 TAHUN 2010 - 2020

LAMANDAU

PEREMPUAN

KELOMPOK UMUR	2010	2011	2012	2013	2014	2015	2016	2017	2018	2019	2020
(1)	(2)	(3)	(4)	(5)	(6)	(7)	(8)	(9)	(10)	(11)	(12)
0-4	3.176	3.237	3.296	3.354	3.422	3.504	3.545	3.580	3.611	3.641	3.668
5-9	3.165	3.210	3.261	3.305	3.363	3.386	3.451	3.514	3.579	3.644	3.732
10-14	2.819	2.867	2.910	2.945	2.997	3.050	3.094	3.141	3.188	3.234	3.255
15-19	2.567	2.596	2.630	2.654	2.689	2.713	2.758	2.796	2.832	2.872	2.919
20-24	2.566	2.602	2.632	2.671	2.711	2.743	2.772	2.807	2.831	2.858	2.878
25-29	3.054	3.112	3.165	3.191	3.238	3.281	3.328	3.363	3.415	3.454	3.493
30-34	2.866	2.946	3.028	3.103	3.184	3.242	3.302	3.357	3.388	3.428	3.471
35-39	2.373	2.514	2.650	2.771	2.899	2.989	3.070	3.155	3.236	3.312	3.373
40-44	1.960	2.074	2.192	2.306	2.435	2.586	2.742	2.886	3.023	3.154	3.249
45-49	1.571	1.670	1.775	1.880	1.999	2.115	2.237	2.365	2.493	2.624	2.787
50-54	1.192	1.285	1.379	1.468	1.570	1.674	1.778	1.886	2.000	2.123	2.247
55-59	819	884	961	1.042	1.132	1.218	1.315	1.410	1.504	1.603	1.709
60-64	560	595	630	669	720	779	841	913	992	1.073	1.155
65-69	401	419	443	469	502	532	564	597	636	681	737
70-74	282	296	308	316	328	341	358	379	402	428	454
75+	309	312	312	318	324	342	354	363	367	380	396
<b>JUMLAH</b>	<b>29.680</b>	<b>30.619</b>	<b>31.572</b>	<b>32.462</b>	<b>33.513</b>	<b>34.495</b>	<b>35.509</b>	<b>36.512</b>	<b>37.497</b>	<b>38.509</b>	<b>39.523</b>

Tabel II.7.3  
 PROYEKSI PENDUDUK  
 MENURUT JENIS KELAMIN DAN KELOMPOK UMUR  
 TAHUN 2010 - 2020

LAMANDAU

LAKI-LAKI + PEREMPUAN

KELOMPOK UMUR	2010	2011	2012	2013	2014	2015	2016	2017	2018	2019	2020
(1)	(2)	(3)	(4)	(5)	(6)	(7)	(8)	(9)	(10)	(11)	(12)
0-4	6.604	6.708	6.813	6.921	7.025	7.172	7.253	7.326	7.389	7.446	7.505
5-9	6.491	6.594	6.710	6.826	6.930	6.985	7.094	7.203	7.313	7.421	7.577
10-14	5.713	5.815	5.899	5.983	6.081	6.203	6.300	6.406	6.512	6.606	6.656
15-19	5.438	5.497	5.563	5.627	5.685	5.753	5.851	5.928	6.004	6.097	6.212
20-24	5.514	5.606	5.693	5.783	5.852	5.905	5.962	6.025	6.080	6.134	6.196
25-29	6.522	6.666	6.796	6.908	7.027	7.154	7.268	7.374	7.481	7.563	7.624
30-34	6.158	6.314	6.480	6.644	6.800	6.942	7.091	7.223	7.333	7.453	7.581
35-39	5.174	5.462	5.731	5.986	6.215	6.397	6.555	6.722	6.883	7.041	7.184
40-44	4.449	4.713	4.984	5.260	5.535	5.860	6.183	6.481	6.762	7.017	7.217
45-49	3.483	3.702	3.934	4.179	4.433	4.697	4.973	5.257	5.544	5.831	6.171
50-54	2.633	2.828	3.025	3.225	3.434	3.663	3.889	4.130	4.383	4.648	4.924
55-59	1.896	2.052	2.225	2.409	2.596	2.787	2.993	3.199	3.409	3.628	3.867
60-64	1.274	1.359	1.454	1.563	1.685	1.823	1.973	2.137	2.313	2.492	2.674
65-69	888	933	987	1.049	1.123	1.205	1.286	1.375	1.478	1.592	1.723
70-74	610	635	658	679	702	729	768	813	864	923	992
75+	638	644	652	662	675	700	721	742	764	788	818
<b>JUMLAH</b>	<b>63.485</b>	<b>65.528</b>	<b>67.604</b>	<b>69.704</b>	<b>71.798</b>	<b>73.975</b>	<b>76.160</b>	<b>78.341</b>	<b>80.512</b>	<b>82.680</b>	<b>84.921</b>

Tabel II.8.1  
PROYEKSI PENDUDUK  
MENURUT JENIS KELAMIN DAN KELOMPOK UMUR  
TAHUN 2010 - 2020

SERUYAN

LAKI-LAKI

KELOMPOK UMUR	2010	2011	2012	2013	2014	2015	2016	2017	2018	2019	2020
(1)	(2)	(3)	(4)	(5)	(6)	(7)	(8)	(9)	(10)	(11)	(12)
0-4	8.134	8.363	8.601	8.847	9.101	9.409	9.667	9.922	10.177	10.429	10.682
5-9	7.357	7.599	7.865	8.140	8.398	8.606	8.854	9.111	9.376	9.651	9.982
10-14	6.528	6.753	6.953	7.162	7.407	7.690	7.943	8.224	8.515	8.786	9.005
15-19	6.585	6.757	6.936	7.127	7.316	7.537	7.794	8.021	8.262	8.542	8.860
20-24	7.973	8.245	8.533	8.797	9.043	9.240	9.478	9.719	9.974	10.229	10.526
25-29	8.826	9.183	9.529	9.888	10.267	10.654	11.018	11.400	11.750	12.078	12.339
30-34	8.439	8.769	9.125	9.489	9.871	10.255	10.668	11.067	11.481	11.919	12.364
35-39	7.004	7.483	7.945	8.401	8.830	9.215	9.575	9.961	10.356	10.772	11.188
40-44	5.091	5.479	5.888	6.314	6.750	7.235	7.732	8.212	8.683	9.124	9.522
45-49	3.590	3.873	4.182	4.515	4.868	5.244	5.644	6.066	6.506	6.956	7.457
50-54	2.350	2.555	2.768	2.994	3.237	3.505	3.782	4.084	4.410	4.757	5.122
55-59	1.463	1.611	1.769	1.940	2.118	2.303	2.505	2.715	2.936	3.178	3.442
60-64	935	1.016	1.113	1.224	1.348	1.479	1.630	1.791	1.965	2.146	2.335
65-69	570	611	656	708	773	852	926	1.016	1.119	1.231	1.352
70-74	348	366	384	403	424	445	478	515	556	609	672
75+	337	345	356	371	383	399	418	437	459	482	505
<b>JUMLAH</b>	<b>75.530</b>	<b>79.008</b>	<b>82.603</b>	<b>86.320</b>	<b>90.134</b>	<b>94.068</b>	<b>98.112</b>	<b>102.261</b>	<b>106.525</b>	<b>110.889</b>	<b>115.353</b>



Tabel II.8.2  
 PROYEKSI PENDUDUK  
 MENURUT JENIS KELAMIN DAN KELOMPOK UMUR  
 TAHUN 2010 - 2020

SERUYAN

PEREMPUAN

KELOMPOK UMUR	2010	2011	2012	2013	2014	2015	2016	2017	2018	2019	2020
(1)	(2)	(3)	(4)	(5)	(6)	(7)	(8)	(9)	(10)	(11)	(12)
0-4	7.567	7.827	8.103	8.390	8.683	9.033	9.284	9.537	9.786	10.033	10.273
5-9	6.807	7.005	7.231	7.460	7.695	7.873	8.157	8.447	8.753	9.061	9.431
10-14	6.127	6.322	6.521	6.719	6.933	7.171	7.391	7.627	7.872	8.122	8.308
15-19	5.846	6.003	6.184	6.348	6.524	6.691	6.909	7.123	7.335	7.564	7.821
20-24	7.174	7.385	7.594	7.841	8.071	8.301	8.520	8.767	9.000	9.235	9.459
25-29	7.865	8.132	8.406	8.628	8.878	9.147	9.420	9.680	9.995	10.286	10.571
30-34	7.034	7.333	7.665	7.994	8.318	8.612	8.912	9.206	9.450	9.718	10.005
35-39	5.475	5.891	6.306	6.718	7.129	7.471	7.799	8.152	8.505	8.850	9.157
40-44	3.852	4.138	4.444	4.762	5.097	5.506	5.929	6.344	6.763	7.176	7.519
45-49	2.633	2.838	3.064	3.304	3.561	3.831	4.122	4.426	4.746	5.080	5.489
50-54	1.730	1.895	2.066	2.242	2.430	2.633	2.843	3.069	3.312	3.568	3.840
55-59	1.061	1.161	1.285	1.419	1.561	1.708	1.872	2.040	2.218	2.402	2.602
60-64	819	883	951	1.030	1.120	1.233	1.353	1.495	1.652	1.819	1.987
65-69	478	507	546	591	639	688	742	799	863	941	1.038
70-74	334	354	373	392	412	437	465	500	541	585	630
75+	381	391	405	418	436	456	477	502	523	551	583
<b>JUMLAH</b>	<b>65.183</b>	<b>68.065</b>	<b>71.144</b>	<b>74.256</b>	<b>77.487</b>	<b>80.791</b>	<b>84.195</b>	<b>87.714</b>	<b>91.314</b>	<b>94.991</b>	<b>98.713</b>

Tabel II.8.3  
PROYEKSI PENDUDUK  
MENURUT JENIS KELAMIN DAN KELOMPOK UMUR  
TAHUN 2010 - 2020

SERUYAN

LAKI-LAKI + PEREMPUAN

KELOMPOK UMUR	2010	2011	2012	2013	2014	2015	2016	2017	2018	2019	2020
(1)	(2)	(3)	(4)	(5)	(6)	(7)	(8)	(9)	(10)	(11)	(12)
0-4	15.701	16.190	16.704	17.237	17.784	18.442	18.951	19.459	19.963	20.462	20.955
5-9	14.164	14.604	15.096	15.600	16.093	16.479	17.011	17.558	18.129	18.712	19.413
10-14	12.655	13.075	13.474	13.881	14.340	14.861	15.334	15.851	16.387	16.908	17.313
15-19	12.431	12.760	13.120	13.475	13.840	14.228	14.703	15.144	15.597	16.106	16.681
20-24	15.147	15.630	16.127	16.638	17.114	17.541	17.998	18.486	18.974	19.464	19.985
25-29	16.691	17.315	17.935	18.516	19.145	19.801	20.438	21.080	21.745	22.364	22.910
30-34	15.473	16.102	16.790	17.483	18.189	18.867	19.580	20.273	20.931	21.637	22.369
35-39	12.479	13.374	14.251	15.119	15.959	16.686	17.374	18.113	18.861	19.622	20.345
40-44	8.943	9.617	10.332	11.076	11.847	12.741	13.661	14.556	15.446	16.300	17.041
45-49	6.223	6.711	7.246	7.819	8.429	9.075	9.766	10.492	11.252	12.036	12.946
50-54	4.080	4.450	4.834	5.236	5.667	6.138	6.625	7.153	7.722	8.325	8.962
55-59	2.524	2.772	3.054	3.359	3.679	4.011	4.377	4.755	5.154	5.580	6.044
60-64	1.754	1.899	2.064	2.254	2.468	2.712	2.983	3.286	3.617	3.965	4.322
65-69	1.048	1.118	1.202	1.299	1.412	1.540	1.668	1.815	1.982	2.172	2.390
70-74	682	720	757	795	836	882	943	1.015	1.097	1.194	1.302
75+	718	736	761	789	819	855	895	939	982	1.033	1.088
<b>JUMLAH</b>	<b>140.713</b>	<b>147.073</b>	<b>153.747</b>	<b>160.576</b>	<b>167.621</b>	<b>174.859</b>	<b>182.307</b>	<b>189.975</b>	<b>197.839</b>	<b>205.880</b>	<b>214.066</b>

Tabel II.9.1  
 PROYEKSI PENDUDUK  
 MENURUT JENIS KELAMIN DAN KELOMPOK UMUR  
 TAHUN 2010 - 2020

KATINGAN

LAKI-LAKI

KELOMPOK UMUR	2010	2011	2012	2013	2014	2015	2016	2017	2018	2019	2020
(1)	(2)	(3)	(4)	(5)	(6)	(7)	(8)	(9)	(10)	(11)	(12)
0-4	8.579	8.590	8.600	8.608	8.617	8.665	8.659	8.644	8.621	8.586	8.553
5-9	7.823	7.867	7.926	7.984	8.015	7.991	7.994	8.002	8.006	8.008	8.057
10-14	7.540	7.595	7.613	7.631	7.682	7.757	7.794	7.847	7.899	7.922	7.896
15-19	7.327	7.323	7.318	7.317	7.310	7.326	7.368	7.376	7.385	7.421	7.487
20-24	7.214	7.268	7.321	7.345	7.348	7.303	7.285	7.266	7.252	7.228	7.233
25-29	7.168	7.264	7.336	7.409	7.486	7.557	7.601	7.648	7.665	7.657	7.607
30-34	7.205	7.291	7.385	7.475	7.567	7.647	7.738	7.806	7.874	7.943	8.014
35-39	6.196	6.446	6.663	6.856	7.012	7.118	7.193	7.279	7.358	7.438	7.513
40-44	5.247	5.500	5.754	6.004	6.246	6.514	6.771	6.992	7.189	7.342	7.452
45-49	3.943	4.143	4.354	4.574	4.800	5.029	5.266	5.504	5.740	5.965	6.218
50-54	2.809	2.974	3.136	3.300	3.473	3.659	3.840	4.032	4.234	4.438	4.648
55-59	2.035	2.182	2.334	2.490	2.645	2.799	2.960	3.120	3.282	3.451	3.635
60-64	1.427	1.510	1.611	1.725	1.846	1.971	2.114	2.260	2.409	2.558	2.707
65-69	895	934	977	1.028	1.091	1.169	1.237	1.319	1.412	1.510	1.613
70-74	660	675	690	705	722	738	771	807	849	900	966
75+	702	701	702	705	715	721	734	746	766	783	798
<b>JUMLAH</b>	<b>76.770</b>	<b>78.263</b>	<b>79.720</b>	<b>81.156</b>	<b>82.575</b>	<b>83.964</b>	<b>85.325</b>	<b>86.648</b>	<b>87.941</b>	<b>89.150</b>	<b>90.397</b>

Tabel II.9.2  
 PROYEKSI PENDUDUK  
 MENURUT JENIS KELAMIN DAN KELOMPOK UMUR  
 TAHUN 2010 - 2020

KATINGAN

PEREMPUAN

KELOMPOK UMUR	2010	2011	2012	2013	2014	2015	2016	2017	2018	2019	2020
(1)	(2)	(3)	(4)	(5)	(6)	(7)	(8)	(9)	(10)	(11)	(12)
0-4	8.238	8.292	8.351	8.412	8.459	8.566	8.559	8.545	8.521	8.492	8.453
5-9	7.615	7.630	7.664	7.692	7.712	7.678	7.734	7.781	7.838	7.884	7.976
10-14	7.457	7.486	7.512	7.532	7.551	7.603	7.620	7.645	7.669	7.690	7.648
15-19	6.900	6.891	6.905	6.901	6.890	6.877	6.905	6.918	6.927	6.942	6.977
20-24	6.629	6.639	6.643	6.673	6.675	6.680	6.670	6.667	6.650	6.636	6.606
25-29	6.715	6.755	6.796	6.789	6.790	6.809	6.819	6.813	6.835	6.838	6.831
30-34	6.332	6.422	6.531	6.625	6.699	6.751	6.793	6.821	6.808	6.807	6.814
35-39	5.353	5.601	5.833	6.042	6.228	6.351	6.448	6.545	6.637	6.711	6.754
40-44	4.219	4.409	4.606	4.803	4.994	5.250	5.494	5.714	5.917	6.101	6.214
45-49	3.199	3.356	3.525	3.699	3.873	4.057	4.241	4.427	4.614	4.799	5.040
50-54	2.337	2.488	2.638	2.786	2.933	3.092	3.246	3.406	3.571	3.740	3.913
55-59	1.743	1.858	1.996	2.143	2.291	2.437	2.596	2.750	2.901	3.056	3.218
60-64	1.263	1.325	1.389	1.461	1.548	1.659	1.767	1.898	2.039	2.181	2.317
65-69	876	904	946	994	1.045	1.099	1.154	1.209	1.272	1.349	1.445
70-74	615	636	651	666	679	699	723	756	796	838	878
75+	703	700	703	708	712	733	743	763	770	783	806
<b>JUMLAH</b>	<b>70.194</b>	<b>71.392</b>	<b>72.689</b>	<b>73.926</b>	<b>75.079</b>	<b>76.341</b>	<b>77.512</b>	<b>78.658</b>	<b>79.765</b>	<b>80.847</b>	<b>81.890</b>

Tabel II.9.3  
 PROYEKSI PENDUDUK  
 MENURUT JENIS KELAMIN DAN KELOMPOK UMUR  
 TAHUN 2010 - 2020

KATINGAN

LAKI-LAKI + PEREMPUAN

KELOMPOK UMUR	2010	2011	2012	2013	2014	2015	2016	2017	2018	2019	2020
(1)	(2)	(3)	(4)	(5)	(6)	(7)	(8)	(9)	(10)	(11)	(12)
0-4	16.817	16.882	16.951	17.020	17.076	17.231	17.218	17.189	17.142	17.078	17.006
5-9	15.438	15.497	15.590	15.676	15.727	15.669	15.728	15.783	15.844	15.892	16.033
10-14	14.997	15.081	15.125	15.163	15.233	15.360	15.414	15.492	15.568	15.612	15.544
15-19	14.227	14.214	14.223	14.218	14.200	14.203	14.273	14.294	14.312	14.363	14.464
20-24	13.843	13.907	13.964	14.018	14.023	13.983	13.955	13.933	13.902	13.864	13.839
25-29	13.883	14.019	14.132	14.198	14.276	14.366	14.420	14.461	14.500	14.495	14.438
30-34	13.537	13.713	13.916	14.100	14.266	14.398	14.531	14.627	14.682	14.750	14.828
35-39	11.549	12.047	12.496	12.898	13.240	13.469	13.641	13.824	13.995	14.149	14.267
40-44	9.466	9.909	10.360	10.807	11.240	11.764	12.265	12.706	13.106	13.443	13.666
45-49	7.142	7.499	7.879	8.273	8.673	9.086	9.507	9.931	10.354	10.764	11.258
50-54	5.146	5.462	5.774	6.086	6.406	6.751	7.086	7.438	7.805	8.178	8.561
55-59	3.778	4.040	4.330	4.633	4.936	5.236	5.556	5.870	6.183	6.507	6.853
60-64	2.690	2.835	3.000	3.186	3.394	3.630	3.881	4.158	4.448	4.739	5.024
65-69	1.771	1.838	1.923	2.022	2.136	2.268	2.391	2.528	2.684	2.859	3.058
70-74	1.275	1.311	1.341	1.371	1.401	1.437	1.494	1.563	1.645	1.738	1.844
75+	1.405	1.401	1.405	1.413	1.427	1.454	1.477	1.509	1.536	1.566	1.604
<b>JUMLAH</b>	<b>146.964</b>	<b>149.655</b>	<b>152.409</b>	<b>155.082</b>	<b>157.654</b>	<b>160.305</b>	<b>162.837</b>	<b>165.306</b>	<b>167.706</b>	<b>169.997</b>	<b>172.287</b>

Tabel II.10.1  
 PROYEKSI PENDUDUK  
 MENURUT JENIS KELAMIN DAN KELOMPOK UMUR  
 TAHUN 2010 - 2020

PULANG PISAU

LAKI-LAKI

KELOMPOK UMUR	2010	2011	2012	2013	2014	2015	2016	2017	2018	2019	2020
(1)	(2)	(3)	(4)	(5)	(6)	(7)	(8)	(9)	(10)	(11)	(12)
0-4	6.392	6.324	6.257	6.192	6.121	6.080	6.001	5.918	5.823	5.732	5.633
5-9	6.037	6.001	5.975	5.950	5.899	5.808	5.741	5.675	5.604	5.538	5.497
10-14	6.331	6.301	6.242	6.186	6.149	6.134	6.086	6.054	6.014	5.960	5.860
15-19	6.108	6.033	5.958	5.888	5.810	5.751	5.714	5.649	5.583	5.542	5.518
20-24	5.410	5.386	5.361	5.318	5.253	5.158	5.082	5.007	4.931	4.856	4.794
25-29	5.282	5.289	5.279	5.271	5.259	5.244	5.209	5.177	5.121	5.055	4.955
30-34	5.243	5.242	5.248	5.251	5.249	5.239	5.236	5.218	5.194	5.178	5.155
35-39	4.752	4.887	4.991	5.077	5.128	5.143	5.133	5.131	5.119	5.112	5.095
40-44	4.030	4.174	4.315	4.452	4.575	4.711	4.836	4.934	5.006	5.052	5.059
45-49	3.467	3.599	3.738	3.883	4.024	4.165	4.307	4.448	4.576	4.700	4.834
50-54	2.726	2.852	2.972	3.092	3.214	3.345	3.467	3.595	3.726	3.858	3.988
55-59	2.288	2.424	2.563	2.701	2.834	2.962	3.094	3.222	3.345	3.476	3.613
60-64	1.654	1.730	1.824	1.931	2.041	2.153	2.279	2.407	2.533	2.657	2.774
65-69	1.132	1.167	1.206	1.254	1.314	1.391	1.453	1.531	1.618	1.709	1.802
70-74	790	798	806	814	821	830	857	886	920	965	1.021
75+	844	834	830	824	826	825	829	836	840	844	853
JUMLAH	62.486	63.041	63.565	64.084	64.517	64.939	65.324	65.688	65.953	66.234	66.451

Tabel II.10.2  
PROYEKSI PENDUDUK  
MENURUT JENIS KELAMIN DAN KELOMPOK UMUR  
TAHUN 2010 - 2020

PULANG PISAU

PEREMPUAN

KELOMPOK UMUR	2010	2011	2012	2013	2014	2015	2016	2017	2018	2019	2020
(1)	(2)	(3)	(4)	(5)	(6)	(7)	(8)	(9)	(10)	(11)	(12)
0-4	5.723	5.691	5.665	5.635	5.593	5.596	5.513	5.437	5.349	5.257	5.161
5-9	5.904	5.842	5.797	5.745	5.685	5.591	5.552	5.519	5.483	5.442	5.428
10-14	5.923	5.875	5.826	5.767	5.707	5.672	5.607	5.555	5.497	5.434	5.332
15-19	5.608	5.532	5.477	5.404	5.325	5.250	5.196	5.146	5.079	5.022	4.977
20-24	4.844	4.791	4.737	4.697	4.638	4.585	4.512	4.456	4.385	4.315	4.239
25-29	5.016	4.986	4.955	4.888	4.825	4.780	4.720	4.660	4.612	4.549	4.483
30-34	4.926	4.937	4.958	4.966	4.956	4.933	4.896	4.858	4.784	4.720	4.660
35-39	4.408	4.553	4.684	4.792	4.872	4.906	4.909	4.924	4.923	4.912	4.876
40-44	3.595	3.710	3.832	3.944	4.048	4.202	4.335	4.452	4.545	4.620	4.640
45-49	3.225	3.342	3.469	3.592	3.714	3.841	3.961	4.084	4.199	4.306	4.459
50-54	2.661	2.796	2.928	3.052	3.172	3.301	3.417	3.544	3.665	3.788	3.908
55-59	2.056	2.164	2.295	2.436	2.570	2.697	2.834	2.965	3.085	3.205	3.328
60-64	1.436	1.488	1.540	1.598	1.671	1.768	1.859	1.971	2.089	2.204	2.311
65-69	1.059	1.081	1.117	1.158	1.203	1.248	1.292	1.336	1.386	1.449	1.530
70-74	739	753	763	770	776	789	804	831	864	895	926
75+	768	758	750	750	743	747	753	755	759	766	772
<b>JUMLAH</b>	<b>57.891</b>	<b>58.299</b>	<b>58.793</b>	<b>59.194</b>	<b>59.498</b>	<b>59.906</b>	<b>60.160</b>	<b>60.493</b>	<b>60.704</b>	<b>60.884</b>	<b>61.030</b>

Tabel II.10.3  
PROYEKSI PENDUDUK  
MENURUT JENIS KELAMIN DAN KELOMPOK UMUR  
TAHUN 2010 - 2020

PULANG PISAU

LAKI-LAKI + PEREMPUAN

KELOMPOK UMUR	2010	2011	2012	2013	2014	2015	2016	2017	2018	2019	2020
(1)	(2)	(3)	(4)	(5)	(6)	(7)	(8)	(9)	(10)	(11)	(12)
0-4	12.115	12.015	11.922	11.827	11.714	11.676	11.514	11.355	11.172	10.989	10.794
5-9	11.941	11.843	11.772	11.695	11.584	11.399	11.293	11.194	11.087	10.980	10.925
10-14	12.254	12.176	12.068	11.953	11.856	11.806	11.693	11.609	11.511	11.394	11.192
15-19	11.716	11.565	11.435	11.292	11.135	11.001	10.910	10.795	10.662	10.564	10.495
20-24	10.254	10.177	10.098	10.015	9.891	9.743	9.594	9.463	9.316	9.171	9.033
25-29	10.298	10.275	10.234	10.159	10.084	10.024	9.929	9.837	9.733	9.604	9.438
30-34	10.169	10.179	10.206	10.217	10.205	10.172	10.132	10.076	9.978	9.898	9.815
35-39	9.160	9.440	9.675	9.869	10.000	10.049	10.042	10.055	10.042	10.024	9.971
40-44	7.625	7.884	8.147	8.396	8.623	8.913	9.171	9.386	9.551	9.672	9.699
45-49	6.692	6.941	7.207	7.475	7.738	8.006	8.268	8.532	8.775	9.006	9.293
50-54	5.387	5.648	5.900	6.144	6.386	6.646	6.884	7.139	7.391	7.646	7.896
55-59	4.344	4.588	4.858	5.137	5.404	5.659	5.928	6.187	6.430	6.681	6.941
60-64	3.090	3.218	3.364	3.529	3.712	3.921	4.138	4.378	4.622	4.861	5.085
65-69	2.191	2.248	2.323	2.412	2.517	2.639	2.745	2.867	3.004	3.158	3.332
70-74	1.529	1.551	1.569	1.584	1.597	1.619	1.661	1.717	1.784	1.860	1.947
75+	1.612	1.592	1.580	1.574	1.569	1.572	1.582	1.591	1.599	1.610	1.625
<b>JUMLAH</b>	<b>120.377</b>	<b>121.340</b>	<b>122.358</b>	<b>123.278</b>	<b>124.015</b>	<b>124.845</b>	<b>125.484</b>	<b>126.181</b>	<b>126.657</b>	<b>127.118</b>	<b>127.481</b>



Tabel II.11.1  
 PROYEKSI PENDUDUK  
 MENURUT JENIS KELAMIN DAN KELOMPOK UMUR  
 TAHUN 2010 - 2020

GUNUNG MAS

LAKI-LAKI

KELOMPOK UMUR	2010	2011	2012	2013	2014	2015	2016	2017	2018	2019	2020
(1)	(2)	(3)	(4)	(5)	(6)	(7)	(8)	(9)	(10)	(11)	(12)
0-4	5.985	6.040	6.098	6.154	6.210	6.296	6.342	6.383	6.411	6.439	6.460
5-9	5.611	5.689	5.778	5.869	5.940	5.969	6.021	6.077	6.124	6.175	6.257
10-14	5.390	5.473	5.531	5.589	5.672	5.774	5.848	5.937	6.021	6.086	6.112
15-19	5.261	5.300	5.340	5.383	5.423	5.477	5.553	5.606	5.652	5.727	5.821
20-24	5.191	5.271	5.355	5.416	5.461	5.472	5.503	5.534	5.564	5.590	5.635
25-29	4.976	5.082	5.176	5.270	5.369	5.463	5.540	5.621	5.674	5.714	5.718
30-34	4.578	4.669	4.769	4.866	4.966	5.059	5.161	5.249	5.333	5.424	5.513
35-39	3.854	4.041	4.211	4.369	4.505	4.611	4.697	4.793	4.880	4.974	5.059
40-44	2.991	3.160	3.333	3.506	3.677	3.866	4.050	4.219	4.368	4.498	4.598
45-49	2.345	2.484	2.632	2.788	2.949	3.114	3.287	3.466	3.639	3.813	4.004
50-54	1.717	1.831	1.947	2.067	2.192	2.328	2.463	2.607	2.758	2.915	3.074
55-59	1.235	1.335	1.440	1.548	1.657	1.768	1.884	2.003	2.122	2.250	2.388
60-64	920	981	1.055	1.139	1.229	1.324	1.429	1.542	1.655	1.772	1.888
65-69	684	720	758	804	861	930	992	1.067	1.150	1.240	1.334
70-74	412	424	437	451	465	479	504	532	565	603	652
75+	477	484	486	492	503	514	529	538	552	568	584
<b>JUMLAH</b>	<b>51.627</b>	<b>52.984</b>	<b>54.346</b>	<b>55.711</b>	<b>57.079</b>	<b>58.444</b>	<b>59.803</b>	<b>61.174</b>	<b>62.468</b>	<b>63.788</b>	<b>65.097</b>

Tabel II.11.2  
 PROYEKSI PENDUDUK  
 MENURUT JENIS KELAMIN DAN KELOMPOK UMUR  
 TAHUN 2010 - 2020

GUNUNG MAS

PEREMPUAN

KELOMPOK UMUR	2010	2011	2012	2013	2014	2015	2016	2017	2018	2019	2020
(1)	(2)	(3)	(4)	(5)	(6)	(7)	(8)	(9)	(10)	(11)	(12)
0-4	5.601	5.688	5.769	5.856	5.939	6.050	6.093	6.134	6.158	6.179	6.196
5-9	5.334	5.390	5.454	5.515	5.575	5.585	5.670	5.750	5.831	5.910	6.022
10-14	4.948	5.011	5.065	5.119	5.173	5.238	5.292	5.352	5.401	5.457	5.465
15-19	4.753	4.789	4.833	4.867	4.899	4.919	4.978	5.028	5.070	5.115	5.177
20-24	4.542	4.589	4.622	4.679	4.721	4.753	4.781	4.820	4.840	4.863	4.877
25-29	4.319	4.385	4.439	4.467	4.503	4.541	4.582	4.613	4.660	4.696	4.727
30-34	3.760	3.850	3.942	4.030	4.111	4.165	4.223	4.275	4.292	4.321	4.355
35-39	3.022	3.190	3.347	3.495	3.635	3.729	3.815	3.904	3.986	4.059	4.115
40-44	2.539	2.676	2.817	2.960	3.104	3.280	3.461	3.625	3.780	3.924	4.025
45-49	1.871	1.979	2.093	2.213	2.338	2.463	2.595	2.731	2.865	3.000	3.173
50-54	1.608	1.728	1.845	1.961	2.084	2.209	2.337	2.474	2.611	2.753	2.902
55-59	1.128	1.212	1.311	1.420	1.532	1.636	1.758	1.877	1.993	2.115	2.241
60-64	857	907	958	1.015	1.085	1.170	1.257	1.360	1.471	1.584	1.696
65-69	614	639	674	714	756	799	844	892	943	1.008	1.087
70-74	423	441	456	467	482	500	521	550	581	617	652
75+	433	430	439	447	451	466	474	495	507	521	538
<b>JUMLAH</b>	<b>45.752</b>	<b>46.904</b>	<b>48.064</b>	<b>49.225</b>	<b>50.388</b>	<b>51.503</b>	<b>52.681</b>	<b>53.880</b>	<b>54.989</b>	<b>56.122</b>	<b>57.248</b>

Tabel II.11.3  
PROYEKSI PENDUDUK  
MENURUT JENIS KELAMIN DAN KELOMPOK UMUR  
TAHUN 2010 - 2020

GUNUNG MAS

LAKI-LAKI + PEREMPUAN

KELOMPOK UMUR	2010	2011	2012	2013	2014	2015	2016	2017	2018	2019	2020
(1)	(2)	(3)	(4)	(5)	(6)	(7)	(8)	(9)	(10)	(11)	(12)
0-4	11.586	11.728	11.867	12.010	12.149	12.346	12.435	12.517	12.569	12.618	12.656
5-9	10.945	11.079	11.232	11.384	11.515	11.554	11.691	11.827	11.955	12.085	12.279
10-14	10.338	10.484	10.596	10.708	10.845	11.012	11.140	11.289	11.422	11.543	11.577
15-19	10.014	10.089	10.173	10.250	10.322	10.396	10.531	10.634	10.722	10.842	10.998
20-24	9.733	9.860	9.977	10.095	10.182	10.225	10.284	10.354	10.404	10.453	10.512
25-29	9.295	9.467	9.615	9.737	9.872	10.004	10.122	10.234	10.334	10.410	10.445
30-34	8.338	8.519	8.711	8.896	9.077	9.224	9.384	9.524	9.625	9.745	9.868
35-39	6.876	7.231	7.558	7.864	8.140	8.340	8.512	8.697	8.866	9.033	9.174
40-44	5.530	5.836	6.150	6.466	6.781	7.146	7.511	7.844	8.148	8.422	8.623
45-49	4.216	4.463	4.725	5.001	5.287	5.577	5.882	6.197	6.504	6.813	7.177
50-54	3.325	3.559	3.792	4.028	4.276	4.537	4.800	5.081	5.369	5.668	5.976
55-59	2.363	2.547	2.751	2.968	3.189	3.404	3.642	3.880	4.115	4.365	4.629
60-64	1.777	1.888	2.013	2.154	2.314	2.494	2.686	2.902	3.126	3.356	3.584
65-69	1.298	1.359	1.432	1.518	1.617	1.729	1.836	1.959	2.093	2.248	2.421
70-74	835	865	893	918	947	979	1.025	1.082	1.146	1.220	1.304
75+	910	914	925	939	954	980	1.003	1.033	1.059	1.089	1.122
<b>JUMLAH</b>	<b>97.379</b>	<b>99.888</b>	<b>102.410</b>	<b>104.936</b>	<b>107.467</b>	<b>109.947</b>	<b>112.484</b>	<b>115.054</b>	<b>117.457</b>	<b>119.910</b>	<b>122.345</b>

Tabel II.12.1  
 PROYEKSI PENDUDUK  
 MENURUT JENIS KELAMIN DAN KELOMPOK UMUR  
 TAHUN 2010 - 2020

BARITO TIMUR

LAKI-LAKI

KELOMPOK UMUR	2010	2011	2012	2013	2014	2015	2016	2017	2018	2019	2020
(1)	(2)	(3)	(4)	(5)	(6)	(7)	(8)	(9)	(10)	(11)	(12)
0-4	5.397	5.463	5.532	5.603	5.671	5.768	5.831	5.888	5.941	5.986	6.030
5-9	4.999	5.085	5.182	5.281	5.360	5.405	5.471	5.538	5.606	5.674	5.770
10-14	4.743	4.830	4.898	4.967	5.055	5.163	5.247	5.345	5.443	5.524	5.567
15-19	4.392	4.440	4.487	4.539	4.585	4.647	4.728	4.788	4.848	4.932	5.030
20-24	4.290	4.370	4.453	4.520	4.571	4.597	4.638	4.679	4.724	4.765	4.821
25-29	4.605	4.719	4.821	4.925	5.032	5.138	5.228	5.322	5.395	5.452	5.477
30-34	4.692	4.800	4.919	5.035	5.154	5.269	5.393	5.505	5.616	5.733	5.849
35-39	4.356	4.584	4.792	4.988	5.157	5.296	5.414	5.542	5.668	5.796	5.920
40-44	3.576	3.791	4.011	4.234	4.454	4.698	4.940	5.160	5.368	5.547	5.692
45-49	2.885	3.065	3.258	3.462	3.675	3.895	4.124	4.362	4.599	4.837	5.098
50-54	2.197	2.352	2.509	2.671	2.843	3.029	3.216	3.416	3.627	3.848	4.075
55-59	1.556	1.688	1.826	1.969	2.116	2.265	2.423	2.582	2.748	2.924	3.115
60-64	889	951	1.027	1.111	1.203	1.301	1.410	1.524	1.644	1.767	1.889
65-69	697	736	778	828	888	963	1.030	1.112	1.204	1.304	1.407
70-74	484	501	517	534	552	572	605	641	681	732	794
75+	486	488	493	503	519	533	548	558	577	598	617
<b>JUMLAH</b>	<b>50.244</b>	<b>51.863</b>	<b>53.503</b>	<b>55.170</b>	<b>56.835</b>	<b>58.539</b>	<b>60.246</b>	<b>61.962</b>	<b>63.689</b>	<b>65.419</b>	<b>67.151</b>

Tabel II.12.2  
 PROYEKSI PENDUDUK  
 MENURUT JENIS KELAMIN DAN KELOMPOK UMUR  
 TAHUN 2010 - 2020

BARITO TIMUR

PEREMPUAN

KELOMPOK UMUR	2010	2011	2012	2013	2014	2015	2016	2017	2018	2019	2020
(1)	(2)	(3)	(4)	(5)	(6)	(7)	(8)	(9)	(10)	(11)	(12)
0-4	5.006	5.098	5.182	5.282	5.364	5.486	5.537	5.588	5.628	5.669	5.701
5-9	4.686	4.748	4.812	4.886	4.949	4.975	5.061	5.149	5.238	5.328	5.447
10-14	4.521	4.594	4.651	4.717	4.777	4.858	4.917	4.984	5.053	5.118	5.142
15-19	4.208	4.250	4.297	4.346	4.383	4.419	4.479	4.536	4.591	4.647	4.720
20-24	4.113	4.168	4.208	4.277	4.322	4.365	4.403	4.449	4.484	4.519	4.548
25-29	4.404	4.482	4.549	4.600	4.647	4.706	4.759	4.805	4.873	4.926	4.971
30-34	4.480	4.599	4.716	4.843	4.947	5.033	5.117	5.193	5.239	5.295	5.356
35-39	3.929	4.156	4.365	4.577	4.765	4.906	5.028	5.159	5.284	5.402	5.491
40-44	3.194	3.375	3.560	3.756	3.945	4.186	4.422	4.647	4.860	5.062	5.206
45-49	2.667	2.832	3.001	3.187	3.370	3.564	3.765	3.972	4.183	4.397	4.663
50-54	2.020	2.177	2.328	2.486	2.644	2.814	2.982	3.164	3.354	3.548	3.751
55-59	1.397	1.507	1.634	1.776	1.917	2.057	2.214	2.371	2.527	2.690	2.861
60-64	985	1.047	1.108	1.183	1.266	1.369	1.476	1.602	1.737	1.875	2.012
65-69	787	823	869	924	983	1.044	1.108	1.174	1.249	1.338	1.450
70-74	589	614	637	657	680	705	737	779	828	881	936
75+	616	621	637	649	652	670	695	720	740	760	787
JUMLAH	47.602	49.091	50.554	52.146	53.611	55.157	56.700	58.292	59.868	61.455	63.042

Tabel II.12.3  
PROYEKSI PENDUDUK  
MENURUT JENIS KELAMIN DAN KELOMPOK UMUR  
TAHUN 2010 - 2020

BARITO TIMUR

LAKI-LAKI + PEREMPUAN

KELOMPOK UMUR	2010	2011	2012	2013	2014	2015	2016	2017	2018	2019	2020
(1)	(2)	(3)	(4)	(5)	(6)	(7)	(8)	(9)	(10)	(11)	(12)
0-4	10.403	10.561	10.714	10.885	11.035	11.254	11.368	11.476	11.569	11.655	11.731
5-9	9.685	9.833	9.994	10.167	10.309	10.380	10.532	10.687	10.844	11.002	11.217
10-14	9.264	9.424	9.549	9.684	9.832	10.021	10.164	10.329	10.496	10.642	10.709
15-19	8.600	8.690	8.784	8.885	8.968	9.066	9.207	9.324	9.439	9.579	9.750
20-24	8.403	8.538	8.661	8.797	8.893	8.962	9.041	9.128	9.208	9.284	9.369
25-29	9.009	9.201	9.370	9.525	9.679	9.844	9.987	10.127	10.268	10.378	10.448
30-34	9.172	9.399	9.635	9.878	10.101	10.302	10.510	10.698	10.855	11.028	11.205
35-39	8.285	8.740	9.157	9.565	9.922	10.202	10.442	10.701	10.952	11.198	11.411
40-44	6.770	7.166	7.571	7.990	8.399	8.884	9.362	9.807	10.228	10.609	10.898
45-49	5.552	5.897	6.259	6.649	7.045	7.459	7.889	8.334	8.782	9.234	9.761
50-54	4.217	4.529	4.837	5.157	5.487	5.843	6.198	6.580	6.981	7.396	7.826
55-59	2.953	3.195	3.460	3.745	4.033	4.322	4.637	4.953	5.275	5.614	5.976
60-64	1.874	1.998	2.135	2.294	2.469	2.670	2.886	3.126	3.381	3.642	3.901
65-69	1.484	1.559	1.647	1.752	1.871	2.007	2.138	2.286	2.453	2.642	2.857
70-74	1.073	1.115	1.154	1.191	1.232	1.277	1.342	1.420	1.509	1.613	1.730
75+	1.102	1.109	1.130	1.152	1.171	1.203	1.243	1.278	1.317	1.358	1.404
<b>JUMLAH</b>	<b>97.846</b>	<b>100.954</b>	<b>104.057</b>	<b>107.316</b>	<b>110.446</b>	<b>113.696</b>	<b>116.946</b>	<b>120.254</b>	<b>123.557</b>	<b>126.874</b>	<b>130.193</b>

Tabel II.13.1  
 PROYEKSI PENDUDUK  
 MENURUT JENIS KELAMIN DAN KELOMPOK UMUR  
 TAHUN 2010 - 2020

MURUNG RAYA

LAKI-LAKI

KELOMPOK UMUR	2010	2011	2012	2013	2014	2015	2016	2017	2018	2019	2020
(1)	(2)	(3)	(4)	(5)	(6)	(7)	(8)	(9)	(10)	(11)	(12)
0-4	6.026	6.085	6.147	6.208	6.270	6.363	6.416	6.465	6.504	6.539	6.571
5-9	5.891	5.977	6.077	6.175	6.256	6.291	6.353	6.418	6.478	6.541	6.638
10-14	5.440	5.527	5.589	5.655	5.742	5.850	5.932	6.028	6.121	6.198	6.231
15-19	4.740	4.777	4.817	4.859	4.899	4.953	5.026	5.079	5.131	5.204	5.297
20-24	4.557	4.630	4.706	4.763	4.808	4.822	4.854	4.887	4.919	4.950	4.997
25-29	4.793	4.899	4.994	5.087	5.187	5.284	5.362	5.446	5.507	5.552	5.566
30-34	4.553	4.646	4.749	4.849	4.953	5.051	5.157	5.251	5.343	5.442	5.539
35-39	3.978	4.175	4.353	4.520	4.664	4.778	4.872	4.976	5.074	5.179	5.276
40-44	3.102	3.280	3.462	3.645	3.827	4.026	4.223	4.401	4.565	4.707	4.820
45-49	2.453	2.600	2.757	2.922	3.094	3.270	3.457	3.646	3.836	4.024	4.232
50-54	1.760	1.879	1.999	2.124	2.254	2.397	2.539	2.690	2.850	3.015	3.187
55-59	1.162	1.257	1.357	1.460	1.565	1.671	1.783	1.897	2.013	2.136	2.271
60-64	785	838	901	974	1.053	1.133	1.226	1.322	1.423	1.525	1.628
65-69	517	544	574	609	652	704	753	809	875	945	1.018
70-74	352	365	376	386	399	412	435	459	487	522	565
75+	347	351	354	362	368	377	383	399	407	420	432
<b>JUMLAH</b>	<b>50.456</b>	<b>51.830</b>	<b>53.212</b>	<b>54.598</b>	<b>55.991</b>	<b>57.382</b>	<b>58.771</b>	<b>60.173</b>	<b>61.533</b>	<b>62.899</b>	<b>64.268</b>

Tabel II.13.2  
 PROYEKSI PENDUDUK  
 MENURUT JENIS KELAMIN DAN KELOMPOK UMUR  
 TAHUN 2010 - 2020

65

MURUNG RAYA											PEREMPUAN
KELOMPOK UMUR	2010	2011	2012	2013	2014	2015	2016	2017	2018	2019	2020
(1)	(2)	(3)	(4)	(5)	(6)	(7)	(8)	(9)	(10)	(11)	(12)
0-4	5.930	6.021	6.123	6.227	6.325	6.463	6.515	6.564	6.609	6.648	6.679
5-9	5.721	5.781	5.862	5.941	6.017	6.050	6.144	6.238	6.343	6.443	6.577
10-14	5.176	5.240	5.313	5.375	5.446	5.535	5.594	5.664	5.736	5.804	5.828
15-19	4.673	4.707	4.764	4.805	4.847	4.886	4.948	5.003	5.056	5.115	5.189
20-24	4.737	4.787	4.839	4.907	4.959	5.008	5.041	5.086	5.123	5.157	5.186
25-29	4.575	4.644	4.716	4.759	4.808	4.867	4.918	4.959	5.022	5.071	5.112
30-34	4.098	4.194	4.306	4.409	4.507	4.583	4.652	4.716	4.751	4.795	4.846
35-39	3.259	3.438	3.618	3.785	3.943	4.060	4.156	4.260	4.360	4.449	4.521
40-44	2.490	2.623	2.770	2.916	3.061	3.250	3.431	3.602	3.765	3.918	4.028
45-49	1.938	2.050	2.176	2.304	2.438	2.578	2.717	2.864	3.013	3.163	3.352
50-54	1.400	1.504	1.612	1.717	1.827	1.943	2.057	2.179	2.307	2.440	2.574
55-59	898	965	1.046	1.135	1.227	1.318	1.416	1.515	1.614	1.717	1.824
60-64	734	776	823	874	934	1.012	1.088	1.180	1.277	1.380	1.480
65-69	500	521	551	584	621	660	698	739	783	838	906
70-74	361	374	387	401	413	428	447	473	501	532	564
75+	341	340	351	354	360	367	383	389	404	416	429
<b>JUMLAH</b>	<b>46.831</b>	<b>47.965</b>	<b>49.257</b>	<b>50.493</b>	<b>51.733</b>	<b>53.008</b>	<b>54.205</b>	<b>55.431</b>	<b>56.664</b>	<b>57.886</b>	<b>59.095</b>



Tabel II.13.3  
PROYEKSI PENDUDUK  
MENURUT JENIS KELAMIN DAN KELOMPOK UMUR  
TAHUN 2010 - 2020

MURUNG RAYA

LAKI-LAKI + PEREMPUAN

KELOMPOK UMUR	2010	2011	2012	2013	2014	2015	2016	2017	2018	2019	2020
(1)	(2)	(3)	(4)	(5)	(6)	(7)	(8)	(9)	(10)	(11)	(12)
0-4	11.956	12.106	12.270	12.435	12.595	12.826	12.931	13.029	13.113	13.187	13.250
5-9	11.612	11.758	11.939	12.116	12.273	12.341	12.497	12.656	12.821	12.984	13.215
10-14	10.616	10.767	10.902	11.030	11.188	11.385	11.526	11.692	11.857	12.002	12.059
15-19	9.413	9.484	9.581	9.664	9.746	9.839	9.974	10.082	10.187	10.319	10.486
20-24	9.294	9.417	9.545	9.670	9.767	9.830	9.895	9.973	10.042	10.107	10.183
25-29	9.368	9.543	9.710	9.846	9.995	10.151	10.280	10.405	10.529	10.623	10.678
30-34	8.651	8.840	9.055	9.258	9.460	9.634	9.809	9.967	10.094	10.237	10.385
35-39	7.237	7.613	7.971	8.305	8.607	8.838	9.028	9.236	9.434	9.628	9.797
40-44	5.592	5.903	6.232	6.561	6.888	7.276	7.654	8.003	8.330	8.625	8.848
45-49	4.391	4.650	4.933	5.226	5.532	5.848	6.174	6.510	6.849	7.187	7.584
50-54	3.160	3.383	3.611	3.841	4.081	4.340	4.596	4.869	5.157	5.455	5.761
55-59	2.060	2.222	2.403	2.595	2.792	2.989	3.199	3.412	3.627	3.853	4.095
60-64	1.519	1.614	1.724	1.848	1.987	2.145	2.314	2.502	2.700	2.905	3.108
65-69	1.017	1.065	1.125	1.193	1.273	1.364	1.451	1.548	1.658	1.783	1.924
70-74	713	739	763	787	812	840	882	932	988	1.054	1.129
75+	688	691	705	716	728	744	766	788	811	836	861
<b>JUMLAH</b>	<b>97.287</b>	<b>99.795</b>	<b>102.469</b>	<b>105.091</b>	<b>107.724</b>	<b>110.390</b>	<b>112.976</b>	<b>115.604</b>	<b>118.197</b>	<b>120.785</b>	<b>123.363</b>

Tabel II.14.1  
 PROYEKSI PENDUDUK  
 MENURUT JENIS KELAMIN DAN KELOMPOK UMUR  
 TAHUN 2010 - 2020

KOTA PALANGKA RAYA

LAKI-LAKI

KELOMPOK UMUR	2010	2011	2012	2013	2014	2015	2016	2017	2018	2019	2020
(1)	(2)	(3)	(4)	(5)	(6)	(7)	(8)	(9)	(10)	(11)	(12)
0-4	11.620	11.793	11.971	12.154	12.333	12.580	12.750	12.909	13.055	13.196	13.318
5-9	10.011	10.206	10.425	10.650	10.842	10.960	11.123	11.290	11.457	11.629	11.853
10-14	9.598	9.799	9.958	10.125	10.333	10.581	10.782	11.010	11.242	11.441	11.556
15-19	11.674	11.827	11.982	12.150	12.308	12.508	12.759	12.956	13.155	13.415	13.715
20-24	14.112	14.407	14.715	14.972	15.186	15.309	15.486	15.667	15.856	16.039	16.262
25-29	10.529	10.813	11.073	11.341	11.618	11.896	12.135	12.385	12.586	12.759	12.846
30-34	10.361	10.627	10.914	11.201	11.497	11.784	12.093	12.376	12.658	12.960	13.250
35-39	9.032	9.525	9.982	10.419	10.802	11.122	11.400	11.701	11.994	12.304	12.593
40-44	7.585	8.059	8.546	9.046	9.541	10.091	10.638	11.142	11.618	12.041	12.384
45-49	6.216	6.619	7.053	7.516	7.998	8.497	9.023	9.566	10.116	10.666	11.269
50-54	4.800	5.148	5.504	5.875	6.271	6.699	7.130	7.595	8.085	8.601	9.128
55-59	3.300	3.587	3.888	4.205	4.530	4.862	5.215	5.575	5.948	6.347	6.774
60-64	1.860	1.996	2.157	2.342	2.541	2.754	2.991	3.246	3.510	3.781	4.055
65-69	1.175	1.242	1.317	1.404	1.511	1.644	1.763	1.907	2.070	2.246	2.434
70-74	747	775	803	832	862	895	947	1.006	1.074	1.157	1.257
75+	715	728	739	756	776	798	822	848	877	907	939
<b>JUMLAH</b>	<b>113.335</b>	<b>117.151</b>	<b>121.027</b>	<b>124.988</b>	<b>128.949</b>	<b>132.980</b>	<b>137.057</b>	<b>141.179</b>	<b>145.301</b>	<b>149.489</b>	<b>153.633</b>

Tabel II.14.2  
 PROYEKSI PENDUDUK  
 MENURUT JENIS KELAMIN DAN KELOMPOK UMUR  
 TAHUN 2010 - 2020

KOTA PALANGKA RAYA

PEREMPUAN

KELOMPOK UMUR	2010	2011	2012	2013	2014	2015	2016	2017	2018	2019	2020
(1)	(2)	(3)	(4)	(5)	(6)	(7)	(8)	(9)	(10)	(11)	(12)
0-4	10.866	11.101	11.331	11.575	11.816	12.126	12.288	12.442	12.585	12.718	12.844
5-9	9.384	9.541	9.712	9.885	10.057	10.148	10.368	10.580	10.807	11.031	11.321
10-14	9.426	9.606	9.769	9.932	10.107	10.313	10.485	10.666	10.849	11.036	11.132
15-19	12.680	12.854	13.050	13.226	13.400	13.563	13.812	14.032	14.249	14.488	14.772
20-24	13.904	14.138	14.340	14.606	14.828	15.034	15.224	15.433	15.615	15.798	15.962
25-29	10.548	10.775	10.984	11.134	11.304	11.489	11.674	11.830	12.039	12.213	12.375
30-34	9.862	10.155	10.462	10.764	11.046	11.282	11.517	11.728	11.878	12.050	12.239
35-39	8.328	8.842	9.327	9.798	10.248	10.589	10.898	11.219	11.536	11.833	12.080
40-44	7.141	7.573	8.023	8.483	8.953	9.531	10.111	10.659	11.187	11.694	12.075
45-49	5.558	5.917	6.301	6.702	7.122	7.562	8.020	8.491	8.975	9.471	10.081
50-54	3.996	4.320	4.643	4.972	5.310	5.674	6.042	6.429	6.838	7.266	7.711
55-59	2.639	2.854	3.109	3.389	3.678	3.962	4.283	4.602	4.925	5.262	5.621
60-64	1.559	1.658	1.762	1.877	2.019	2.192	2.372	2.579	2.810	3.052	3.288
65-69	1.118	1.171	1.241	1.325	1.413	1.503	1.602	1.701	1.815	1.952	2.119
70-74	771	807	838	868	901	938	986	1.045	1.115	1.190	1.268
75+	883	892	912	930	954	979	1.018	1.052	1.088	1.124	1.170
<b>JUMLAH</b>	<b>108.663</b>	<b>112.204</b>	<b>115.804</b>	<b>119.466</b>	<b>123.156</b>	<b>126.885</b>	<b>130.700</b>	<b>134.488</b>	<b>138.311</b>	<b>142.178</b>	<b>146.058</b>

Tabel II.14.3  
PROYEKSI PENDUDUK  
MENURUT JENIS KELAMIN DAN KELOMPOK UMUR  
TAHUN 2010 - 2020

KOTA PALANGKA RAYA

LAKI-LAKI + PEREMPUAN

KELOMPOK UMUR	2010	2011	2012	2013	2014	2015	2016	2017	2018	2019	2020
(1)	(2)	(3)	(4)	(5)	(6)	(7)	(8)	(9)	(10)	(11)	(12)
0-4	22.486	22.894	23.302	23.729	24.149	24.706	25.038	25.351	25.640	25.914	26.162
5-9	19.395	19.747	20.137	20.535	20.899	21.108	21.491	21.870	22.264	22.660	23.174
10-14	19.024	19.405	19.727	20.057	20.440	20.894	21.267	21.676	22.091	22.477	22.688
15-19	24.354	24.681	25.032	25.376	25.708	26.071	26.571	26.988	27.404	27.903	28.487
20-24	28.016	28.545	29.055	29.578	30.014	30.343	30.710	31.100	31.471	31.837	32.224
25-29	21.077	21.588	22.057	22.475	22.922	23.385	23.809	24.215	24.625	24.972	25.221
30-34	20.223	20.782	21.376	21.965	22.543	23.066	23.610	24.104	24.536	25.010	25.489
35-39	17.360	18.367	19.309	20.217	21.050	21.711	22.298	22.920	23.530	24.137	24.673
40-44	14.726	15.632	16.569	17.529	18.494	19.622	20.749	21.801	22.805	23.735	24.459
45-49	11.774	12.536	13.354	14.218	15.120	16.059	17.043	18.057	19.091	20.137	21.350
50-54	8.796	9.468	10.147	10.847	11.581	12.373	13.172	14.024	14.923	15.867	16.839
55-59	5.939	6.441	6.997	7.594	8.208	8.824	9.498	10.177	10.873	11.609	12.395
60-64	3.419	3.654	3.919	4.219	4.560	4.946	5.363	5.825	6.320	6.833	7.343
65-69	2.293	2.413	2.558	2.729	2.924	3.147	3.365	3.608	3.885	4.198	4.553
70-74	1.518	1.582	1.641	1.700	1.763	1.833	1.933	2.051	2.189	2.347	2.525
75+	1.598	1.620	1.651	1.686	1.730	1.777	1.840	1.900	1.965	2.031	2.109
<b>JUMLAH</b>	<b>221.998</b>	<b>229.355</b>	<b>236.831</b>	<b>244.454</b>	<b>252.105</b>	<b>259.865</b>	<b>267.757</b>	<b>275.667</b>	<b>283.612</b>	<b>291.667</b>	<b>299.691</b>

# DATA

MENCERDASKAN BANGSA

<http://www.bps.go.id>



***BADAN PUSAT STATISTIK***

Jl. Dr. Sutomo 6-8 Jakarta 10710

Tel. : (021) 3841195, 3842508, 3810291-4 Fax. : (021) 3857046

Homepage : <http://www.bps.go.id> E-mail : [bpsHQ@bps.go.id](mailto:bpsHQ@bps.go.id)