

**Proyeksi
Penduduk Kabupaten/Kota
Provinsi Sulawesi Utara**

2010-2020



**BADAN PUSAT STATISTIK
UNITED NATIONS POPULATION FUND**

JAKARTA 2015



BADAN PUSAT STATISTIK



**Proyeksi
Penduduk Kabupaten/Kota
Provinsi Sulawesi Utara**

2010-2020



**PROYEKSI PENDUDUK KABUPATEN/KOTA
TAHUN 2010 – 2020 PROVINSI SULAWESI UTARA**

Pengarah:

Drs. Razali Ritonga, MA

Tim Teknis:

Dr. Indra Murty Surbakti, MA; Poetrijanti, S.Si; Dendi Handiyatmo SST, M.Si;
Hermawan Agustina, S.Kom;

Penyusun/Penulis:

Trophy Endah Rahayu, M.Si
Ikhsan Fahmi, SST

Pengolah Data:

Tika Agustin, SST

Layout:

Subekti, M.Sc

<http://www.bps.go.id>

KATA PENGANTAR

Proyeksi Penduduk Indonesia tahun 2010 - 2035 yang merupakan proyeksi penduduk untuk tingkat nasional dan provinsi telah diterbitkan pada tahun 2013. Untuk memenuhi kebutuhan data penduduk pada tingkat kabupaten/kota maka disusun proyeksi ini berdasarkan hasil Sensus Penduduk 2010 dan sesuai dengan asumsi penghitungan proyeksi nasional dan provinsi. Adapun metode yang digunakan memanfaatkan tren pertumbuhan penduduk sejak tahun 2000, dimana data kabupaten/kota sudah tersedia.

Publikasi Proyeksi Kabupaten/Kota disusun untuk periode 2010 - 2020 dengan tujuan untuk menunjang perencanaan pada tingkat kabupaten/kota di masa kini dan mendatang. Periode yang disampaikan cukup singkat dengan pertimbangan agar tren yang digunakan tidak terlalu menyimpang, sehingga hasil proyeksi ini masih dianggap realistis. Dengan demikian, untuk saat ini Badan Pusat Statistik telah menyediakan data proyeksi penduduk tingkat nasional, provinsi, dan kabupaten/kota yang dapat dimanfaatkan oleh semua pengguna data.

Penyusunan buku ini merupakan hasil kerja sama antara BPS dan UNFPA. Kami mengucapkan terima kasih kepada semua pihak yang telah membantu penyusunan buku ini. Semoga bermanfaat dan dapat memenuhi kebutuhan semua pihak yang memerlukan, khususnya bagi pihak yang berminat pada masalah sosial dan kependudukan.

Jakarta, Juni 2015

Kepala Badan Pusat Statistik,



Dr. Suryamin, M.Sc

<http://www.bps.go.id>

DAFTAR ISI

	Halaman
KATA PENGANTAR	iii
DAFTAR ISI	v
BAB I. PENDAHULUAN	1
BAB II. METODOLOGI	3
LAMPIRAN	
Tabel I.1 Proyeksi Penduduk Menurut Kabupaten/Kota dan Jenis Kelamin Tahun 2010 - 2020	7
Tabel I.2 Rasio Jenis Kelamin Menurut Kabupaten/Kota Tahun 2010 - 2020	10
Tabel I.3 Rasio Ketergantungan Menurut Kabupaten/Kota Tahun 2010 - 2020.....	11
Tabel I.4 Persentase Penduduk Perkotaan Menurut Kabupaten/Kota Tahun 2010 - 2020	12
Tabel I.5 Persentase Penduduk Lansia Menurut Kabupaten/Kota Tahun 2010 - 2020..	13
Gambar I Piramida Penduduk Menurut Kabupaten/Kota Tahun 2010 - 2020.....	14
Tabel II Proyeksi Penduduk Menurut Jenis Kelamin dan Kelompok Umur Tahun 2010 - 2020	29

<http://www.bps.go.id>

BAB I

PENDAHULUAN

Informasi mengenai jumlah penduduk untuk wilayah kabupaten/kota pada suatu waktu tertentu dibutuhkan dalam perencanaan program dan penentuan kebijakan di wilayah tersebut. Ketersediaan data penduduk dapat dipenuhi dari hasil sensus penduduk ataupun survei tentang kependudukan namun sayangnya tidak setiap tahun tersedia. Oleh karena itu, perlu dibuat suatu perkiraan mengenai jumlah penduduk untuk wilayah kabupaten/kota untuk mengisi kekosongan pada tahun-tahun tertentu atau untuk masa yang akan datang. Ketersediaan data penduduk selain jumlahnya juga dilengkapi dengan karakteristik jenis kelamin dan umur.

Secara nasional dan pada tingkat provinsi informasi penduduk masa yang datang diproyeksikan menggunakan metode komponen, dimana metode tersebut mempertimbangkan pengaruh kelahiran, kematian, dan perpindahan. Untuk tingkat kabupaten/kota dilakukan estimasi penduduk dengan mempertimbangkan laju pertumbuhan untuk masing-masing kabupaten/kota, dimana jumlahnya dipagu dari hasil proyeksi provinsinya. Metode estimasi yang digunakan untuk memperkirakan penduduk masa yang akan datang menggunakan metode geometrik. Pemilihan metode ini didasarkan kesesuaian pertambahan secara geometrik dengan perkembangan jumlah penduduk dan disadari bahwa belum dapat dilakukannya proyeksi komponen untuk kabupaten/kota karena komponen pertumbuhan belum tersedia lengkap.

Proyeksi penduduk kabupaten/kota menurut kelompok umur, dan jenis kelamin yang disajikan dalam publikasi ini mencakup kurun waktu sepuluh tahun, mulai tahun 2010 sampai dengan 2020. Pembuatan proyeksi dengan kurun waktu singkat ini dimaksudkan agar hasilnya dapat digunakan untuk berbagai keperluan terutama perencanaan di masa datang.

<http://www.bps.go.id>

BAB II

METODOLOGI

Estimasi penduduk dengan metode geometrik menggunakan asumsi bahwa jumlah penduduk akan bertambah secara geometrik menggunakan dasar perhitungan bunga majemuk. Laju pertumbuhan penduduk (*rate of growth*) dianggap sama untuk setiap tahun. Berikut formula yang digunakan pada metode geometrik:

$$P_t = P_0(1+r)^t$$

$$r = \left(\frac{P_t}{P_0}\right)^{\frac{1}{t}} - 1$$

dimana:

- P_t = jumlah penduduk pada tahun t
- P_0 = jumlah penduduk pada tahun awal
- r = laju pertumbuhan penduduk
- t = periode waktu antara tahun dasar dan tahun t (dalam tahun)

Data yang dibutuhkan:

- Jumlah penduduk Indonesia hasil proyeksi penduduk 2010 - 2020 yang dirinci menurut provinsi.
- Jumlah penduduk kabupaten/kota hasil SP2000, SP2010, khusus untuk kabupaten/kota di Provinsi Aceh dan Pulau Nias menggunakan data hasil SPAN2005.

Tahapan menghitung proyeksi penduduk kabupaten/kota:

1. Menentukan sumber data dari hasil sensus penduduk dan menyiapkan dua data penduduk untuk tahun yang berbeda pada suatu wilayah yang akan diestimasi.
2. Menghitung rata-rata laju pertumbuhan penduduk (LPP) per tahun dengan metode geometrik berdasarkan jumlah penduduk dari dua data.

3. Melakukan proses prorata, agar penjumlahan penduduk untuk semua kabupaten/kota menjadi sama dengan penduduk provinsi (penduduk provinsi sebagai kontrol).
4. Jumlah penduduk per kabupaten/kota ini selanjutnya akan digunakan sebagai kontrol untuk menghitung jumlah penduduk menurut kota/desa, jenis kelamin, maupun menurut kelompok umur.
5. Estimasi penduduk untuk karakteristik jenis kelamin diolah terlebih dahulu, kemudian dilanjutkan dengan estimasi penduduk perkotaan dan perdesaan.
6. Melakukan proses iterasi untuk penduduk kabupaten/kota menurut jenis kelamin dan kelompok umur, dengan jumlah penduduk provinsi sebagai kontrol.
7. Untuk kabupaten/kota pemekaran yang pada saat sensus belum terbentuk, data ditelusuri menggunakan data SP2000, SPAN2005, dan SP2010.

LAMPIRAN

<http://www.ips.go.id>

Tabel I.1.1
 PROYEKSI PENDUDUK
 MENURUT KABUPATEN/KOTA DAN JENIS KELAMIN
 TAHUN 2010 - 2020

SULAWESI UTARA

LAKI-LAKI

KABUPATEN/KOTA	2010	2011	2012	2013	2014	2015	2016	2017	2018	2019	2020
(1)	(2)	(3)	(4)	(5)	(6)	(7)	(8)	(9)	(10)	(11)	(12)
BOLAANG MONGONDOW	111.315	113.316	115.267	117.394	119.403	121.211	123.104	124.970	126.900	128.831	130.529
MINAHASA	159.102	161.104	162.921	164.811	166.621	168.217	169.909	171.418	172.992	174.413	175.788
KEPULAUAN SANGIHE	63.802	64.192	64.600	64.777	65.213	65.498	65.682	66.011	66.114	66.293	66.385
KEPULAUAN TALAUD	42.719	43.309	43.870	44.388	44.874	45.383	45.900	46.311	46.693	47.172	47.594
MINAHASA SELATAN	101.088	102.203	103.196	104.097	104.903	105.830	106.628	107.328	108.087	108.711	109.372
MINAHASA UTARA	96.279	97.217	98.077	99.104	99.814	100.719	101.270	102.127	102.792	103.411	104.023
BOLAANG MONGONDOW UTARA	36.201	36.812	37.419	38.026	38.612	39.102	39.563	40.097	40.704	41.123	41.615
SIAU TAGULANDANG BIARO	31.592	31.703	31.904	32.188	32.209	32.397	32.422	32.576	32.694	32.741	32.830
MINAHASA TENGGARA	52.103	52.520	52.977	53.316	53.700	54.103	54.490	54.720	55.001	55.386	55.390
BOLAANG MONGONDOW SELATAN	29.882	30.529	31.002	31.375	32.002	32.399	33.027	33.615	33.983	34.485	34.997
BOLAANG MONGONDOW TIMUR	33.419	33.975	34.431	34.926	35.385	35.876	36.387	36.796	37.305	37.773	38.321
KOTA MANADO	206.584	208.055	209.747	211.112	212.603	213.613	214.734	215.832	216.822	217.396	218.206
KOTA BITUNG	96.215	98.008	99.715	101.495	103.270	105.094	106.831	108.481	110.089	111.909	113.509
KOTA TOMOHON	46.187	47.102	48.084	48.811	49.679	50.576	51.386	52.314	53.000	53.806	54.675
KOTA KOTAMOBAGU	54.994	56.102	57.205	58.474	59.472	60.792	62.110	63.075	64.291	65.370	66.493
JUMLAH	1.161.482	1.176.147	1.190.415	1.204.294	1.217.760	1.230.810	1.243.443	1.255.671	1.267.467	1.278.820	1.289.727

Tabel I.1.2
PROYEKSI PENDUDUK
MENURUT KABUPATEN/KOTA DAN JENIS KELAMIN
TAHUN 2010 - 2020

SULAWESI UTARA

PEREMPUAN

KABUPATEN/KOTA	2010	2011	2012	2013	2014	2015	2016	2017	2018	2019	2020
(1)	(2)	(3)	(4)	(5)	(6)	(7)	(8)	(9)	(10)	(11)	(12)
BOLAANG MONGONDOW	102.984	104.759	106.602	108.374	110.201	111.978	113.789	115.535	117.285	118.980	120.672
MINAHASA	152.206	154.023	155.770	157.471	159.059	160.786	162.281	163.903	165.372	166.763	168.178
KEPULAUAN SANGIHE	62.580	62.894	63.278	63.646	63.890	64.086	64.342	64.482	64.719	64.870	65.004
KEPULAUAN TALAUD	40.967	41.516	42.009	42.538	43.048	43.420	43.936	44.367	44.906	45.303	45.726
MINAHASA SELATAN	95.012	95.906	96.679	97.571	98.414	99.153	99.975	100.685	101.414	101.984	102.714
MINAHASA UTARA	93.231	94.059	95.047	95.765	96.605	97.365	98.228	98.858	99.525	100.213	100.766
BOLAANG MONGONDOW UTARA	34.701	35.170	35.701	36.211	36.678	37.229	37.820	38.340	38.662	39.190	39.714
SIAU TAGULANDANG BIARO	32.418	32.619	32.817	32.941	33.075	33.185	33.405	33.400	33.531	33.662	33.660
MINAHASA TENGGARA	48.608	48.996	49.417	49.813	50.118	50.433	50.673	50.994	51.302	51.513	51.789
BOLAANG MONGONDOW SELATAN	27.298	27.799	28.292	28.845	29.175	29.823	30.180	30.556	31.144	31.586	32.008
BOLAANG MONGONDOW TIMUR	30.494	30.909	31.491	31.864	32.439	32.816	33.329	33.814	34.172	34.635	34.996
KOTA MANADO	204.984	206.724	207.893	209.289	210.654	212.021	213.172	214.301	215.058	216.239	217.128
KOTA BITUNG	92.075	93.798	95.576	97.299	98.934	100.581	102.164	103.928	105.622	107.095	108.713
KOTA TOMOHON	45.726	46.495	47.304	48.162	49.007	49.797	50.595	51.397	52.306	53.111	53.814
KOTA KOTAMOBAGU	52.925	54.110	55.189	56.305	57.547	58.635	59.589	60.797	61.907	63.017	64.185
JUMLAH	1.116.209	1.129.777	1.143.065	1.156.094	1.168.844	1.181.308	1.193.478	1.205.357	1.216.925	1.228.161	1.239.067

Tabel I.1.3
PROYEKSI PENDUDUK
MENURUT KABUPATEN/KOTA DAN JENIS KELAMIN
TAHUN 2010 - 2020

SULAWESI UTARA

LAKI-LAKI + PEREMPUAN

KABUPATEN/KOTA	2010	2011	2012	2013	2014	2015	2016	2017	2018	2019	2020
(1)	(2)	(3)	(4)	(5)	(6)	(7)	(8)	(9)	(10)	(11)	(12)
BOLAANG MONGONDOW	214.299	218.075	221.869	225.768	229.604	233.189	236.893	240.505	244.185	247.811	251.201
MINAHASA	311.308	315.127	318.691	322.282	325.680	329.003	332.190	335.321	338.364	341.176	343.966
KEPULAUAN SANGIHE	126.382	127.086	127.878	128.423	129.103	129.584	130.024	130.493	130.833	131.163	131.389
KEPULAUAN TALAUD	83.686	84.825	85.879	86.926	87.922	88.803	89.836	90.678	91.599	92.475	93.320
MINAHASA SELATAN	196.100	198.109	199.875	201.668	203.317	204.983	206.603	208.013	209.501	210.695	212.086
MINAHASA UTARA	189.510	191.276	193.124	194.869	196.419	198.084	199.498	200.985	202.317	203.624	204.789
BOLAANG MONGONDOW UTARA	70.902	71.982	73.120	74.237	75.290	76.331	77.383	78.437	79.366	80.313	81.329
SIAU TAGULANDANG BIARO	64.010	64.322	64.721	65.129	65.284	65.582	65.827	65.976	66.225	66.403	66.490
MINAHASA TENGGARA	100.711	101.516	102.394	103.129	103.818	104.536	105.163	105.714	106.303	106.899	107.179
BOLAANG MONGONDOW SELATAN	57.180	58.328	59.294	60.220	61.177	62.222	63.207	64.171	65.127	66.071	67.005
BOLAANG MONGONDOW TIMUR	63.913	64.884	65.922	66.790	67.824	68.692	69.716	70.610	71.477	72.408	73.317
KOTA MANADO	411.568	414.779	417.640	420.401	423.257	425.634	427.906	430.133	431.880	433.635	435.334
KOTA BITUNG	188.290	191.806	195.291	198.794	202.204	205.675	208.995	212.409	215.711	219.004	222.222
KOTA TOMOHON	91.913	93.597	95.388	96.973	98.686	100.373	101.981	103.711	105.306	106.917	108.489
KOTA KOTAMOBAGU	107.919	110.212	112.394	114.779	117.019	119.427	121.699	123.872	126.198	128.387	130.678
JUMLAH	2.277.691	2.305.924	2.333.480	2.360.388	2.386.604	2.412.118	2.436.921	2.461.028	2.484.392	2.506.981	2.528.794

Tabel I.2
RASIO JENIS KELAMIN
MENURUT KABUPATEN/KOTA
TAHUN 2010 - 2020

SULAWESI UTARA

KABUPATEN/KOTA	2010	2011	2012	2013	2014	2015	2016	2017	2018	2019	2020
(1)	(2)	(3)	(4)	(5)	(6)	(7)	(8)	(9)	(10)	(11)	(12)
BOLAANG MONGONDOW	108,09	108,17	108,13	108,32	108,35	108,25	108,19	108,17	108,20	108,28	108,17
MINAHASA	104,53	104,60	104,59	104,66	104,75	104,62	104,70	104,59	104,61	104,59	104,52
KEPULAUAN SANGIHE	101,95	102,06	102,09	101,78	102,07	102,20	102,08	102,37	102,16	102,19	102,12
KEPULAUAN TALAUD	104,28	104,32	104,43	104,35	104,24	104,52	104,47	104,38	103,98	104,13	104,09
MINAHASA SELATAN	106,39	106,57	106,74	106,69	106,59	106,73	106,65	106,60	106,58	106,60	106,48
MINAHASA UTARA	103,27	103,36	103,19	103,49	103,32	103,44	103,10	103,31	103,28	103,19	103,23
BOLAANG MONGONDOW UTARA	104,32	104,67	104,81	105,01	105,27	105,03	104,61	104,58	105,28	104,93	104,79
SIAU TAGULANDANG BIARO	97,45	97,19	97,22	97,71	97,38	97,63	97,06	97,53	97,50	97,26	97,53
MINAHASA TENGGARA	107,19	107,19	107,20	107,03	107,15	107,28	107,53	107,31	107,21	107,52	106,95
BOLAANG MONGONDOW SELATAN	109,47	109,82	109,58	108,77	109,69	108,64	109,43	110,01	109,12	109,18	109,34
BOLAANG MONGONDOW TIMUR	109,59	109,92	109,34	109,61	109,08	109,32	109,18	108,82	109,17	109,06	109,50
KOTA MANADO	100,78	100,64	100,89	100,87	100,93	100,75	100,73	100,71	100,82	100,54	100,50
KOTA BITUNG	104,50	104,49	104,33	104,31	104,38	104,49	104,57	104,38	104,23	104,50	104,41
KOTA TOMOHON	101,01	101,31	101,65	101,35	101,37	101,56	101,56	101,78	101,33	101,31	101,60
KOTA KOTAMOBAGU	103,91	103,68	103,65	103,85	103,35	103,68	104,23	103,75	103,85	103,73	103,60
JUMLAH	104,06	104,10	104,14	104,17	104,18	104,19	104,19	104,17	104,15	104,12	104,09

Tabel I.3
RASIO KETERGANTUNGAN
MENURUT KABUPATEN/KOTA
TAHUN 2010 - 2020

SULAWESI UTARA

KABUPATEN/KOTA	2010	2011	2012	2013	2014	2015	2016	2017	2018	2019	2020
(1)	(2)	(3)	(4)	(5)	(6)	(7)	(8)	(9)	(10)	(11)	(12)
BOLAANG MONGONDOW	53,05	52,68	52,30	51,95	51,66	51,44	51,23	51,06	50,95	50,86	50,76
MINAHASA	47,51	47,13	46,76	46,45	46,24	46,13	46,07	46,07	46,17	46,31	46,46
KEPULAUAN SANGIHE	45,47	45,10	44,75	44,44	44,22	44,10	44,01	43,99	44,04	44,13	44,25
KEPULAUAN TALAUD	51,76	51,34	50,93	50,55	50,25	50,03	49,83	49,68	49,62	49,58	49,55
MINAHASA SELATAN	51,94	51,49	51,04	50,65	50,35	50,14	49,99	49,91	49,91	49,95	50,01
MINAHASA UTARA	48,48	48,11	47,73	47,40	47,13	46,95	46,77	46,65	46,58	46,55	46,52
BOLAANG MONGONDOW UTARA	56,08	55,70	55,28	54,90	54,60	54,36	54,14	53,96	53,85	53,74	53,64
SIAU TAGULANDANG BIARO	48,06	47,63	47,22	46,90	46,65	46,51	46,44	46,43	46,52	46,63	46,80
MINAHASA TENGGARA	55,16	54,71	54,25	53,84	53,51	53,28	53,07	52,91	52,83	52,78	52,74
BOLAANG MONGONDOW SELATAN	58,52	58,14	57,74	57,34	56,99	56,66	56,36	56,04	55,82	55,57	55,31
BOLAANG MONGONDOW TIMUR	48,89	48,57	48,23	47,93	47,68	47,48	47,31	47,17	47,09	47,01	46,92
KOTA MANADO	41,00	40,72	40,44	40,19	40,00	39,87	39,75	39,64	39,60	39,57	39,53
KOTA BITUNG	47,40	47,08	46,75	46,44	46,18	45,97	45,74	45,55	45,40	45,27	45,11
KOTA TOMOHON	45,67	45,33	45,00	44,73	44,54	44,44	44,38	44,37	44,44	44,55	44,66
KOTA KOTAMOBAGU	45,50	45,20	44,89	44,59	44,35	44,17	43,99	43,85	43,76	43,68	43,59
JUMLAH	47,98	47,63	47,27	46,96	46,72	46,56	46,42	46,32	46,29	46,29	46,28

Tabel I.4
 PERSENTASE PENDUDUK PERKOTAAN
 MENURUT KABUPATEN/KOTA
 TAHUN 2010 - 2020

SULAWESI UTARA

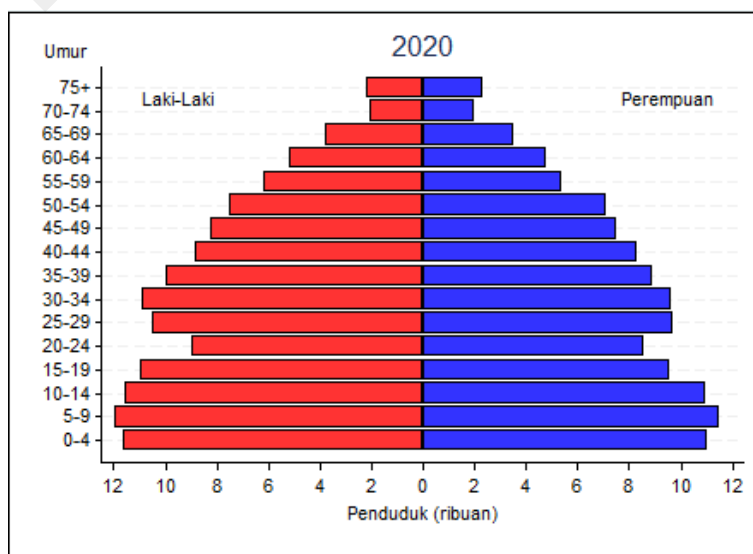
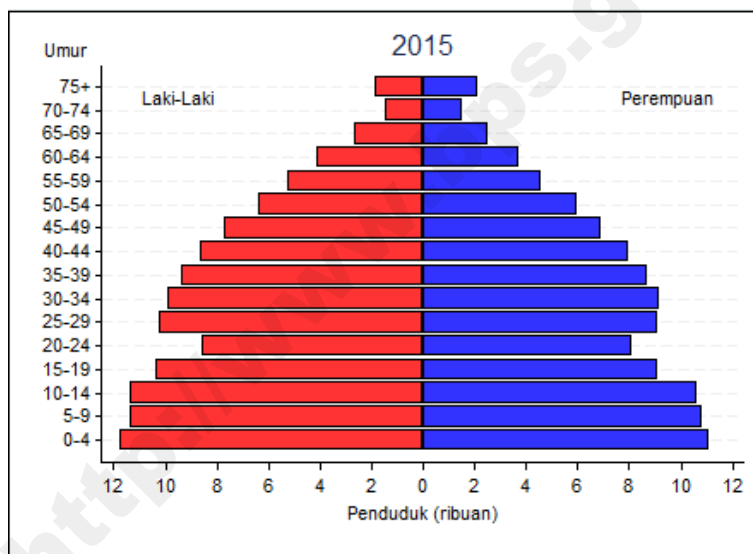
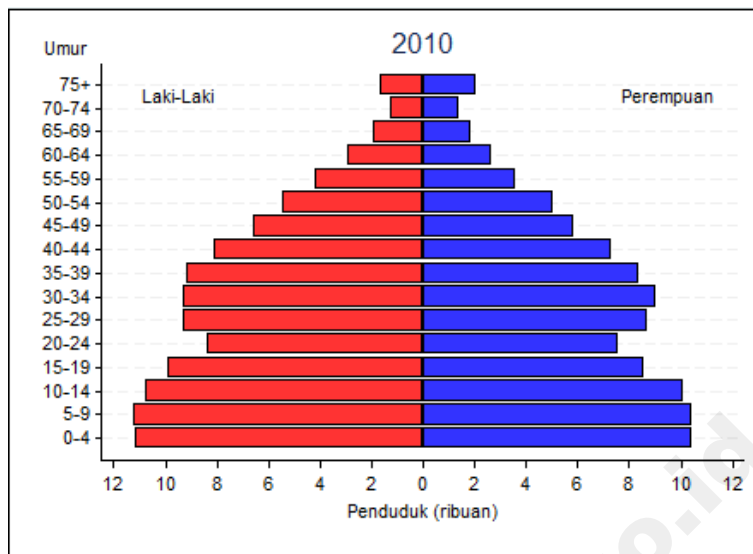
KABUPATEN/KOTA	2010	2011	2012	2013	2014	2015	2016	2017	2018	2019	2020
(1)	(2)	(3)	(4)	(5)	(6)	(7)	(8)	(9)	(10)	(11)	(12)
BOLAANG MONGONDOW	3,26	4,16	5,07	5,98	6,88	7,79	8,76	9,74	10,71	11,69	12,67
MINAHASA	48,33	49,25	50,15	51,06	51,97	52,88	53,85	54,83	55,80	56,77	57,75
KEPULAUAN SANGIHE	27,84	28,75	29,66	30,57	31,48	32,38	33,36	34,33	35,31	36,29	37,26
KEPULAUAN TALAUD	12,89	13,79	14,70	15,61	16,52	17,42	18,40	19,38	20,36	21,33	22,31
MINAHASA SELATAN	17,21	18,11	19,02	19,93	20,83	21,74	22,71	23,69	24,67	25,64	26,62
MINAHASA UTARA	45,53	46,43	47,34	48,25	49,16	50,07	51,04	52,02	53,00	53,97	54,95
BOLAANG MONGONDOW UTARA	2,27	3,18	4,08	4,99	5,90	6,81	7,79	8,76	9,73	10,71	11,68
SIAU TAGULANDANG BIARO	21,75	22,66	23,57	24,48	25,39	26,30	27,28	28,25	29,23	30,21	31,19
MINAHASA TENGGARA	0,81	1,71	2,62	3,52	4,43	5,34	6,32	7,29	8,26	9,24	10,21
BOLAANG MONGONDOW SELATAN	1,67	2,58	3,49	4,39	5,30	6,20	7,18	8,15	9,13	10,10	11,08
BOLAANG MONGONDOW TIMUR	8,83	9,74	10,64	11,55	12,46	13,36	14,34	15,31	16,29	17,26	18,24
KOTA MANADO	96,15	96,62	97,09	97,56	98,03	98,50	98,80	99,10	99,40	99,70	100,00
KOTA BITUNG	82,80	83,72	84,62	85,53	86,44	87,35	88,32	89,30	90,27	91,25	92,22
KOTA TOMOHON	67,16	68,07	68,98	69,89	70,80	71,70	72,67	73,65	74,63	75,61	76,58
KOTA KOTAMOBAGU	64,86	65,77	66,67	67,58	68,49	69,40	70,38	71,35	72,33	73,31	74,28
JUMLAH	45,21	46,12	47,03	47,94	48,85	49,75	50,72	51,70	52,68	53,66	54,63

Tabel I.5
 PERSENTASE PENDUDUK LANSIA
 MENURUT KABUPATEN/KOTA
 TAHUN 2010 - 2020

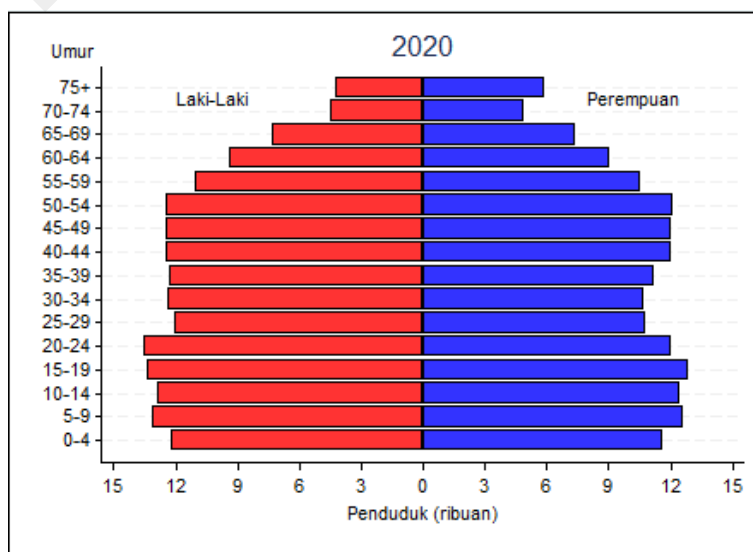
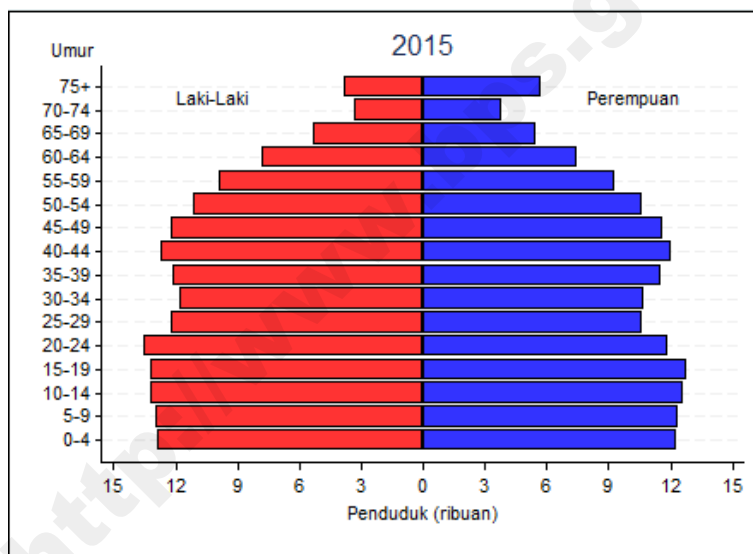
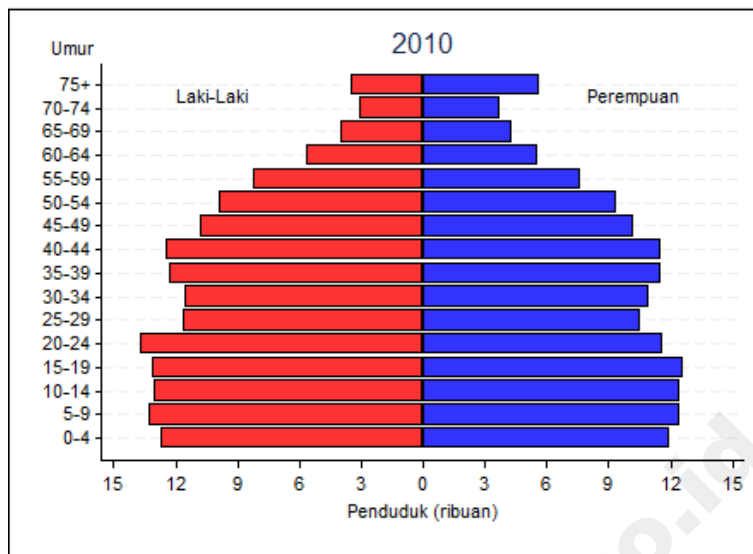
SULAWESI UTARA

KABUPATEN/KOTA	2010	2011	2012	2013	2014	2015	2016	2017	2018	2019	2020
(1)	(2)	(3)	(4)	(5)	(6)	(7)	(8)	(9)	(10)	(11)	(12)
BOLAANG MONGONDOW	7,36	7,54	7,75	8,00	8,28	8,59	8,90	9,23	9,58	9,93	10,28
MINAHASA	11,41	11,64	11,91	12,24	12,61	13,01	13,44	13,89	14,37	14,85	15,34
KEPULAUAN SANGIHE	10,19	10,38	10,63	10,92	11,24	11,60	11,98	12,39	12,81	13,25	13,70
KEPULAUAN TALAUD	9,06	9,26	9,51	9,79	10,11	10,45	10,81	11,19	11,59	12,00	12,41
MINAHASA SELATAN	10,42	10,64	10,90	11,21	11,55	11,94	12,34	12,77	13,21	13,67	14,12
MINAHASA UTARA	8,34	8,53	8,76	9,03	9,33	9,66	10,00	10,36	10,73	11,11	11,49
BOLAANG MONGONDOW UTARA	6,97	7,15	7,35	7,60	7,87	8,17	8,48	8,81	9,16	9,51	9,86
SIAU TAGULANDANG BIARO	11,66	11,88	12,16	12,50	12,87	13,27	13,69	14,16	14,63	15,11	15,61
MINAHASA TENGGARA	9,01	9,22	9,47	9,75	10,08	10,43	10,80	11,18	11,58	12,00	12,41
BOLAANG MONGONDOW SELATAN	5,21	5,36	5,55	5,75	5,98	6,22	6,47	6,73	7,01	7,28	7,55
BOLAANG MONGONDOW TIMUR	6,81	6,99	7,19	7,43	7,70	7,98	8,28	8,60	8,93	9,27	9,60
KOTA MANADO	6,77	6,95	7,15	7,39	7,66	7,95	8,25	8,57	8,90	9,23	9,56
KOTA BITUNG	5,70	5,85	6,04	6,25	6,48	6,73	6,99	7,27	7,55	7,84	8,12
KOTA TOMOHON	10,20	10,41	10,68	11,00	11,35	11,73	12,12	12,55	13,00	13,45	13,91
KOTA KOTAMOBAGU	6,48	6,65	6,86	7,09	7,35	7,64	7,92	8,23	8,55	8,87	9,19
JUMLAH	8,42	8,61	8,84	9,10	9,40	9,72	10,06	10,42	10,79	11,18	11,56

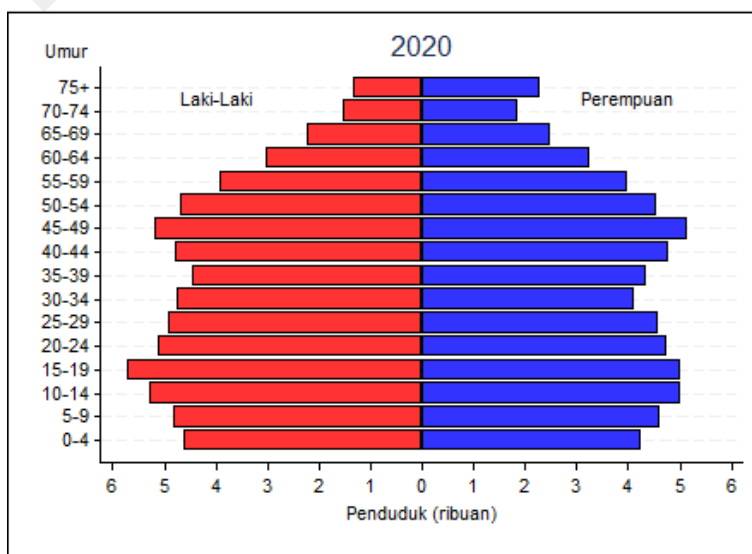
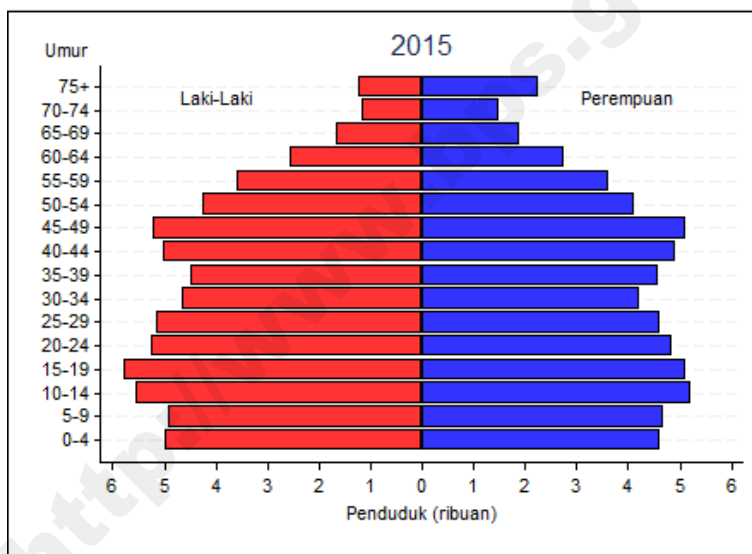
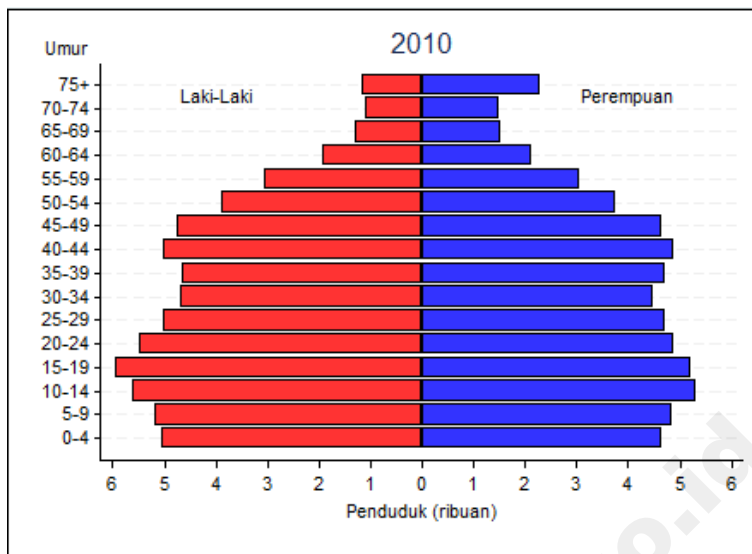
Gambar I.1
 PIRAMIDA PENDUDUK BOLAANG MONGONDOW
 TAHUN 2010 – 2020



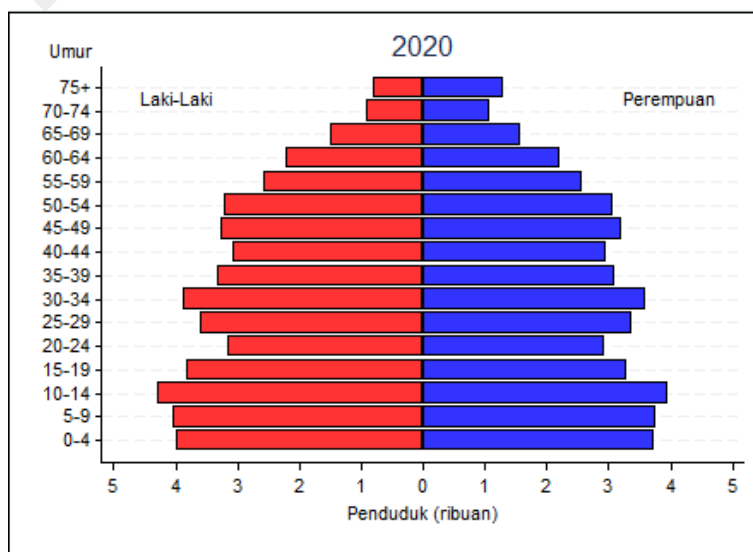
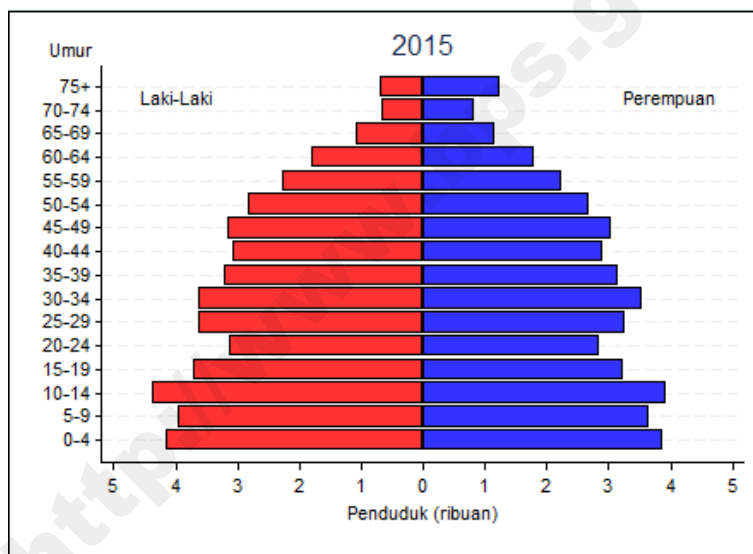
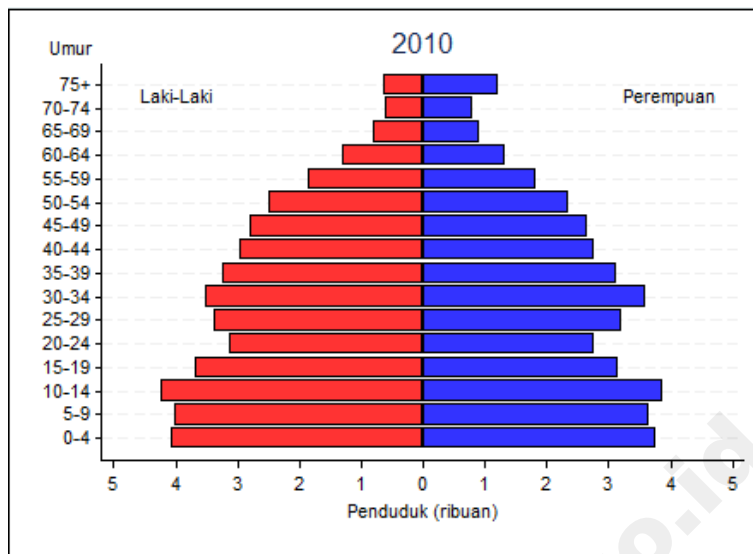
Gambar I.1
 PIRAMIDA PENDUDUK MINAHASA
 TAHUN 2010 – 2020



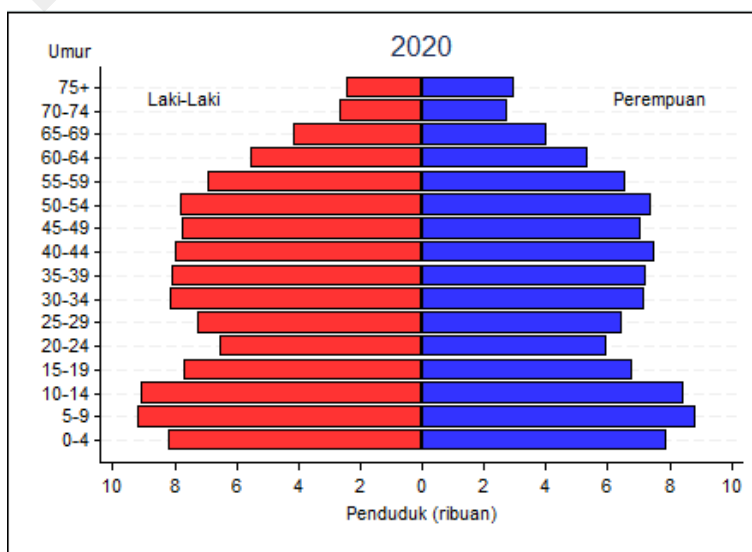
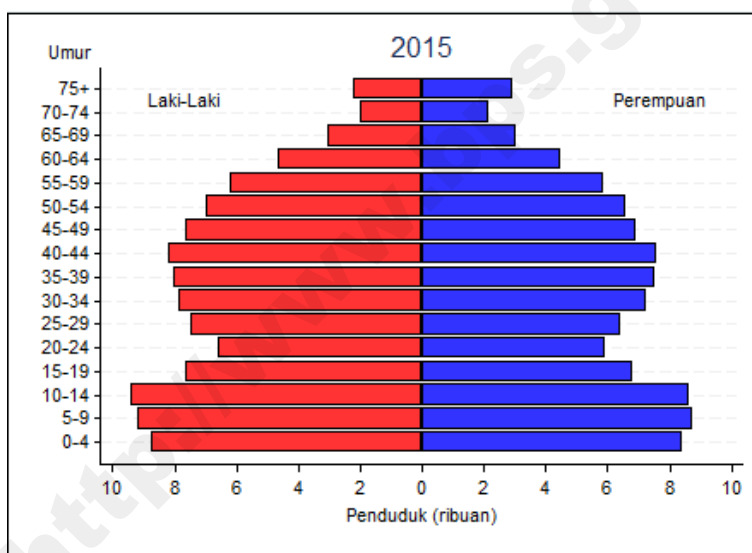
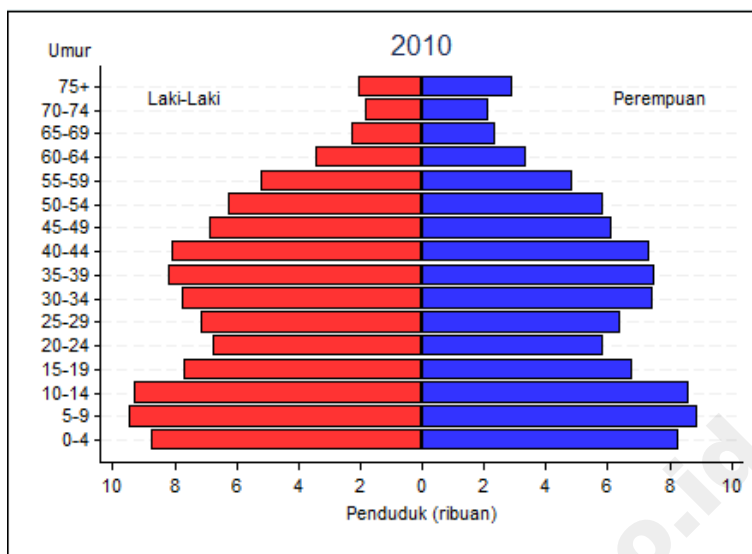
Gambar I.3
 PIRAMIDA PENDUDUK KEPULAUAN SANGIHE
 TAHUN 2010 – 2020



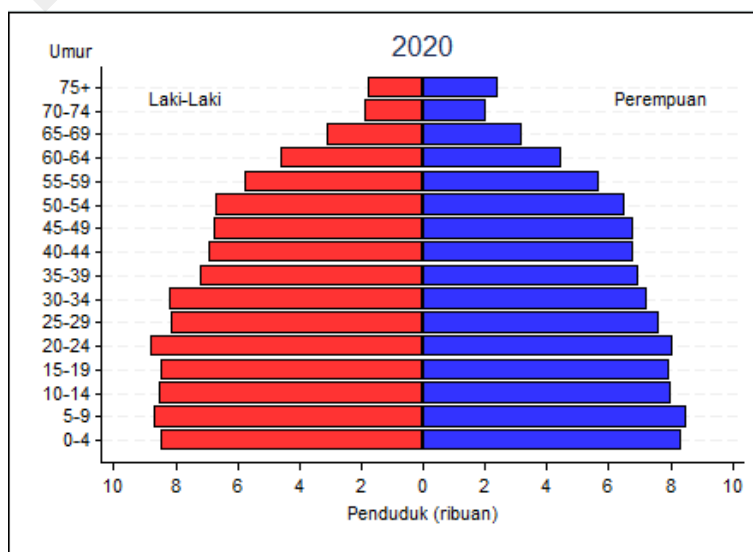
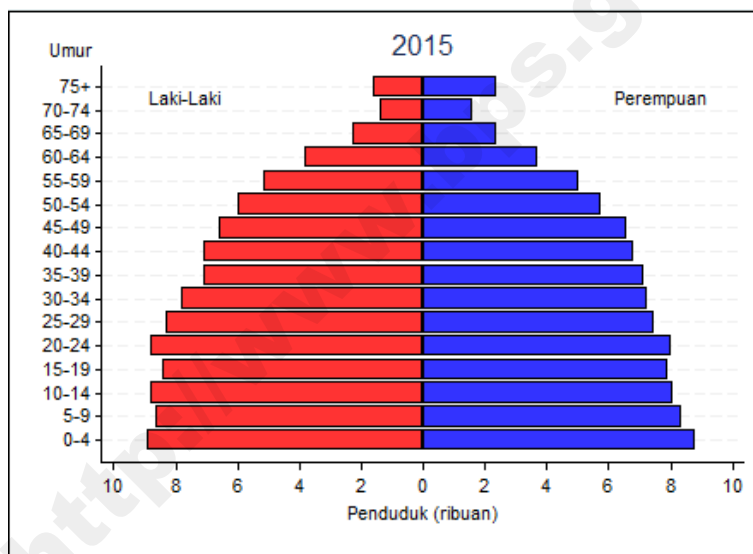
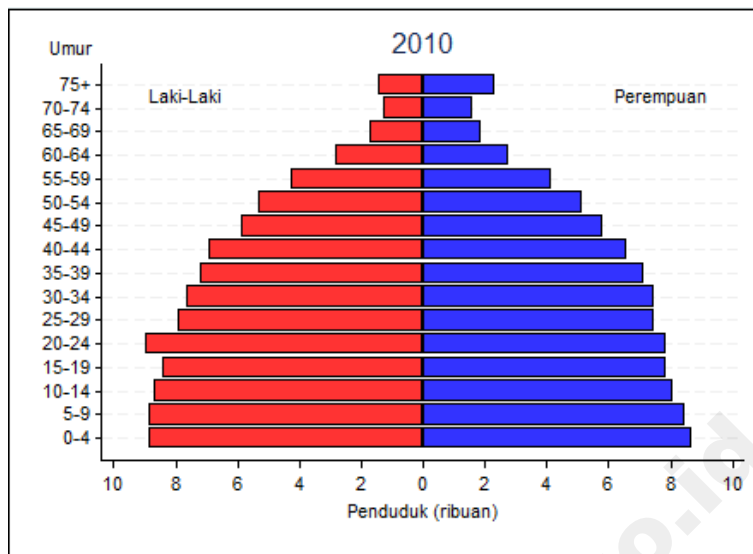
Gambar I.4
 PIRAMIDA PENDUDUK KEPULAUAN TALAUD
 TAHUN 2010 – 2020



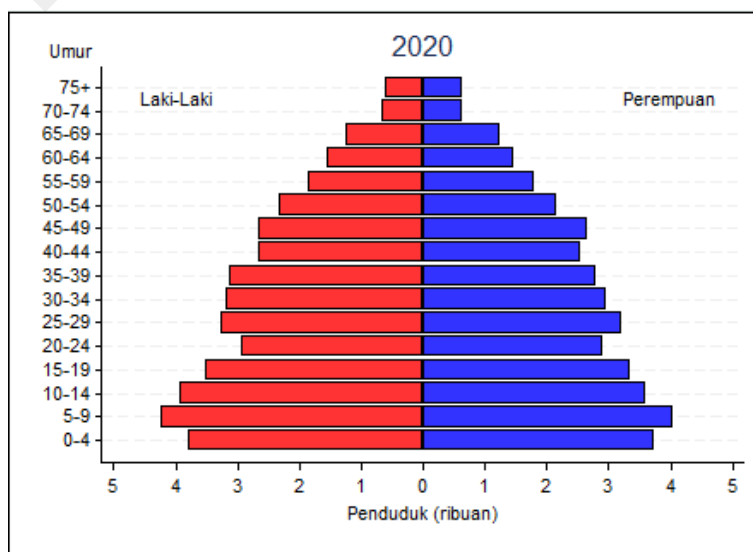
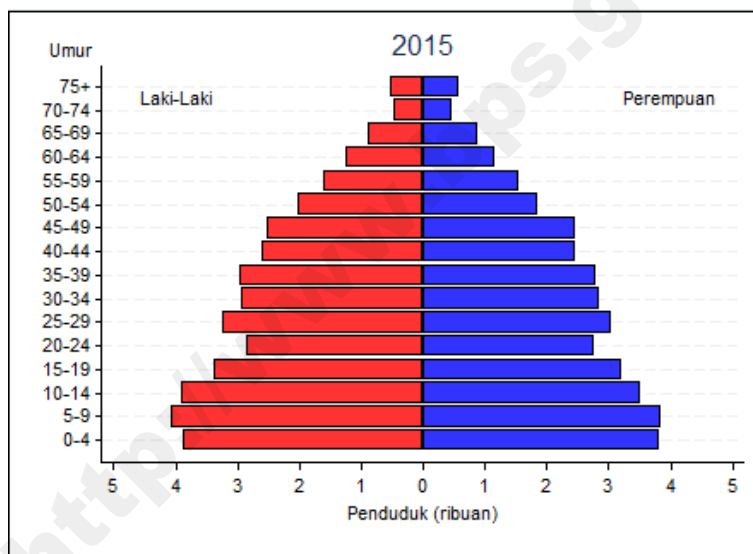
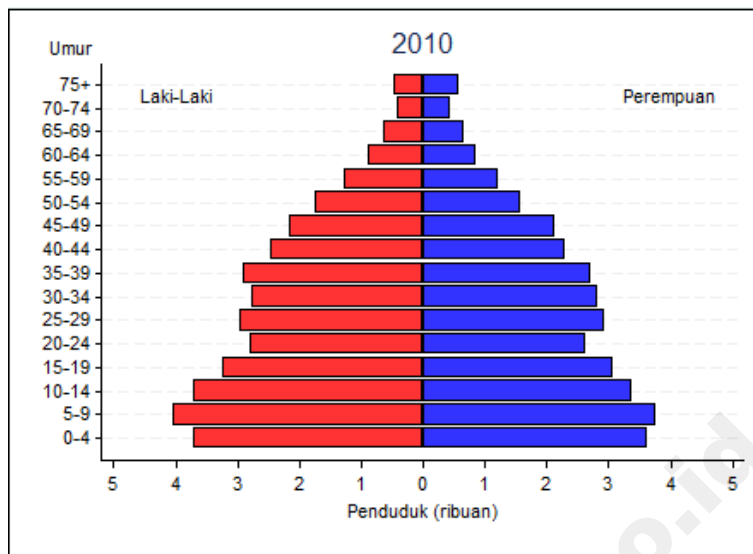
Gambar I.5
 PIRAMIDA PENDUDUK MINAHASA SELATAN
 TAHUN 2010 – 2020



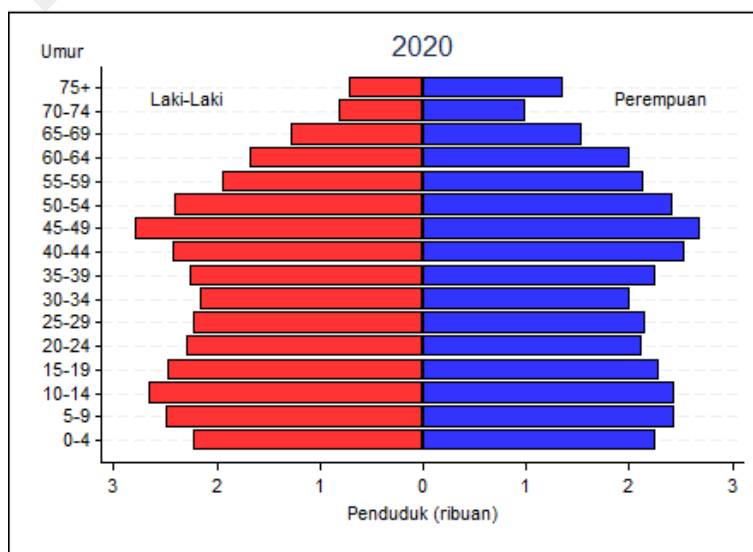
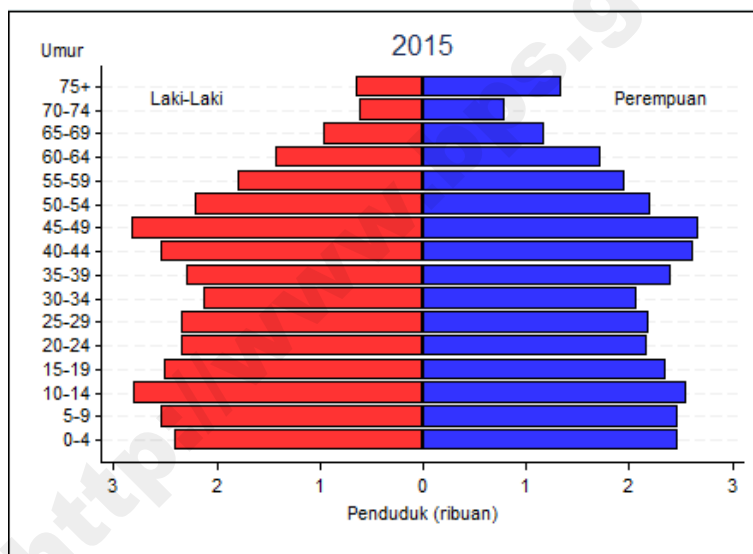
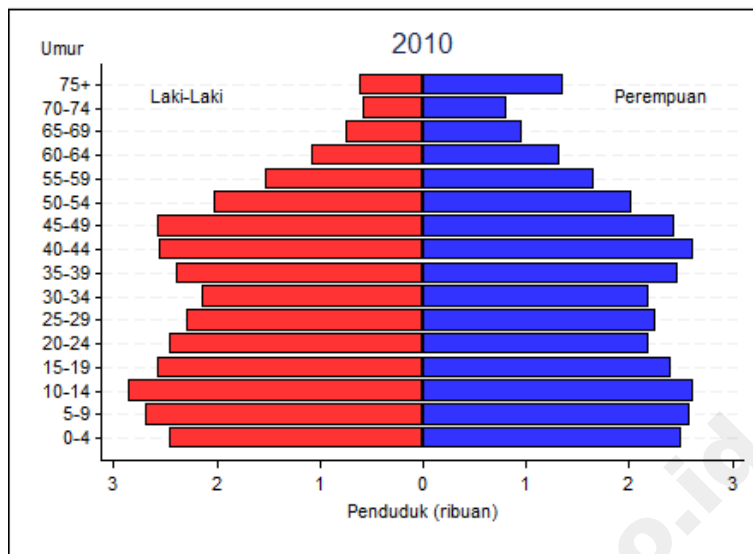
Gambar I.6
 PIRAMIDA PENDUDUK MINAHASA UTARA
 TAHUN 2010 – 2020



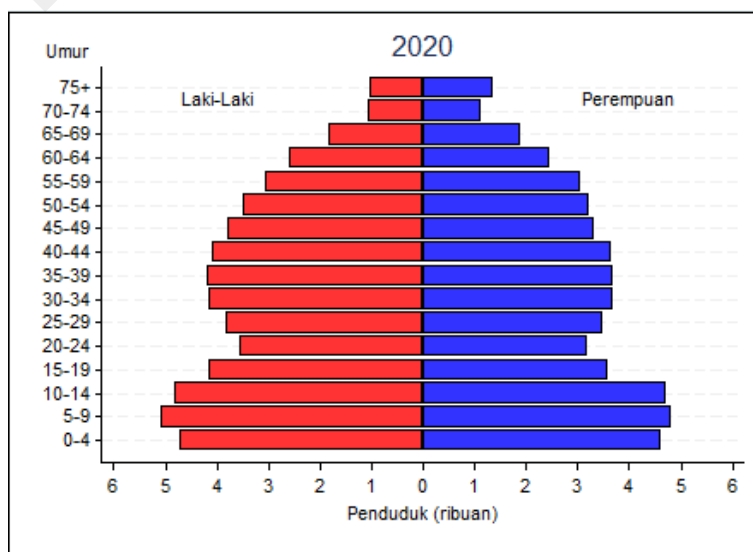
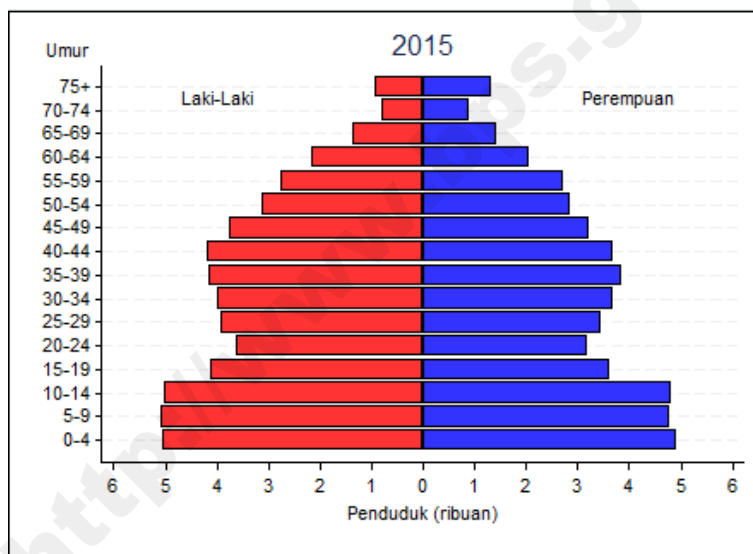
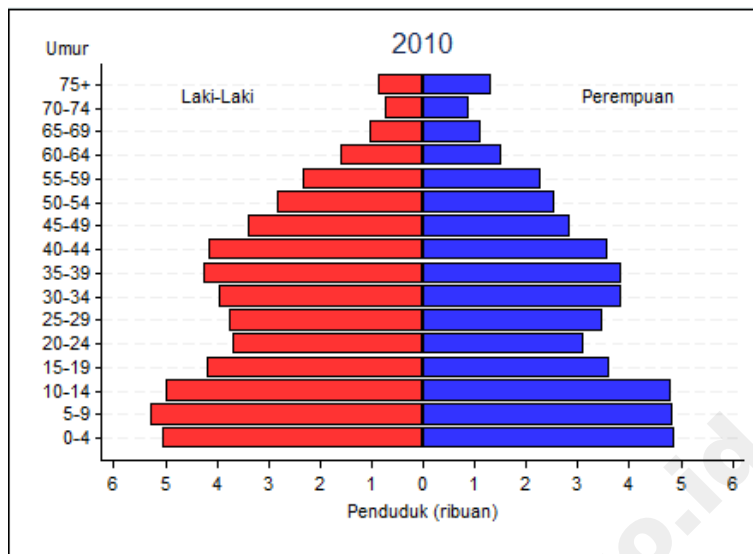
Gambar I.7
 PIRAMIDA PENDUDUK BOLAANG MONGONDOW UTARA
 TAHUN 2010 – 2020



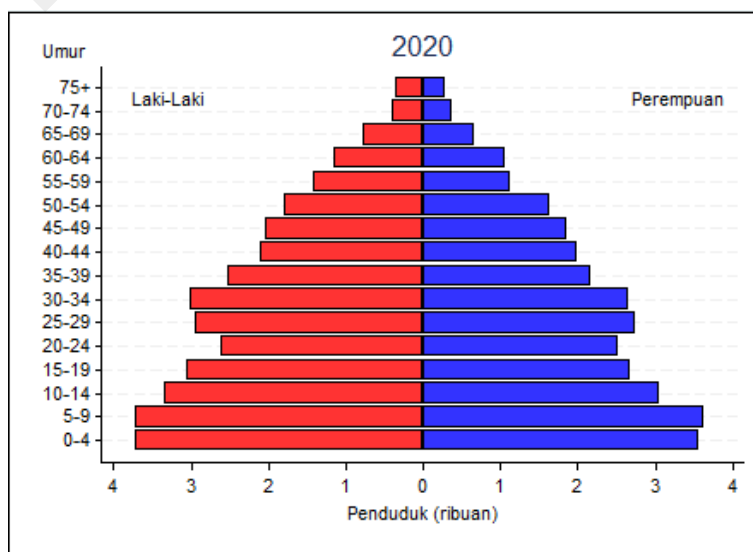
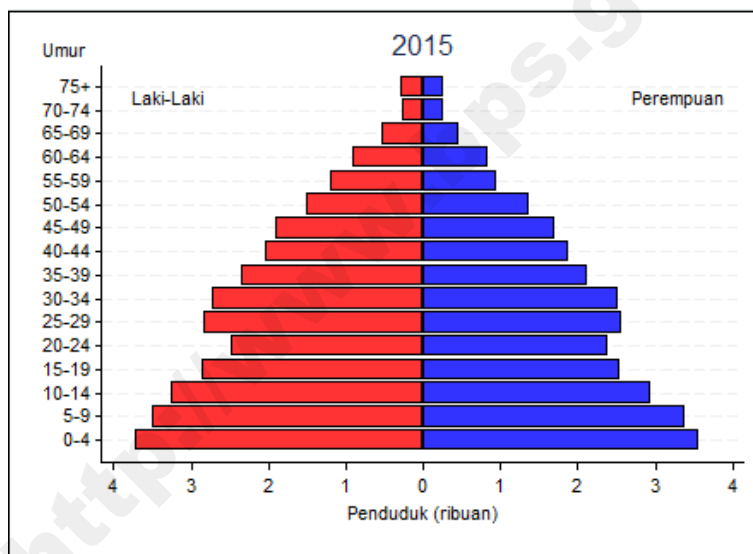
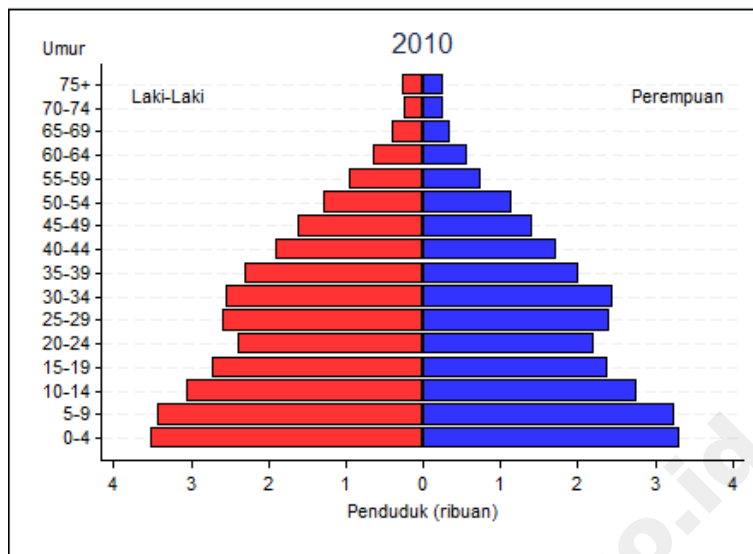
Gambar I.8
 PIRAMIDA PENDUDUK SIAU TAGULANDANG BIARO
 TAHUN 2010 – 2020



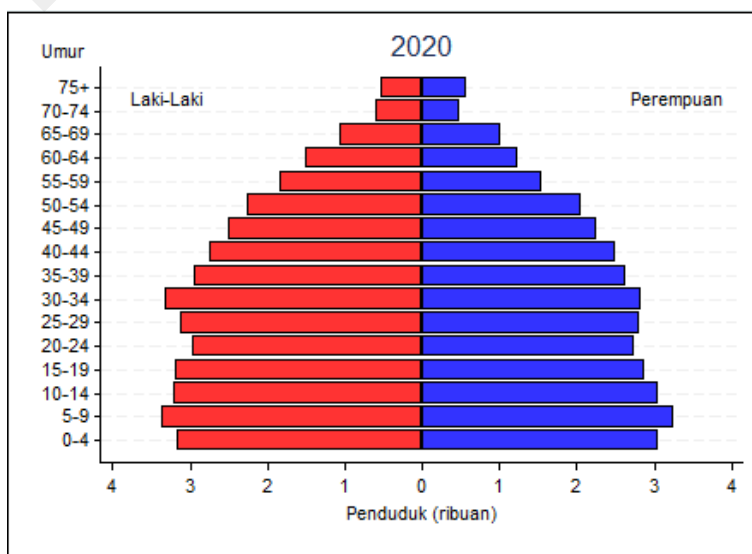
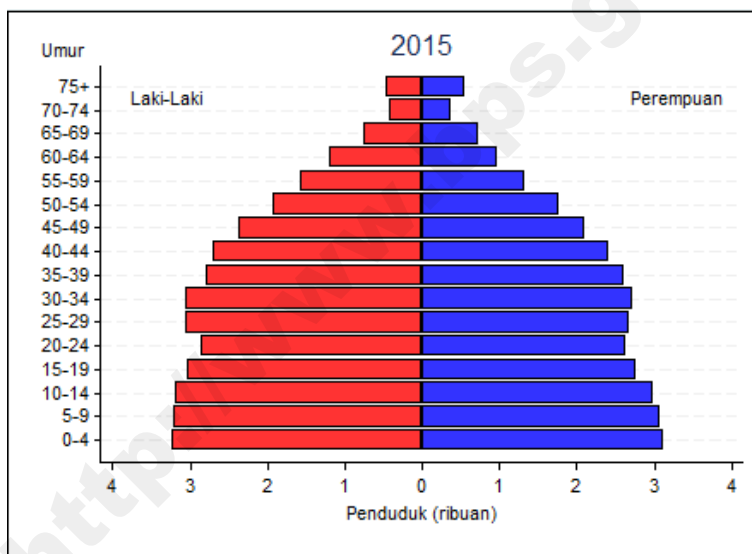
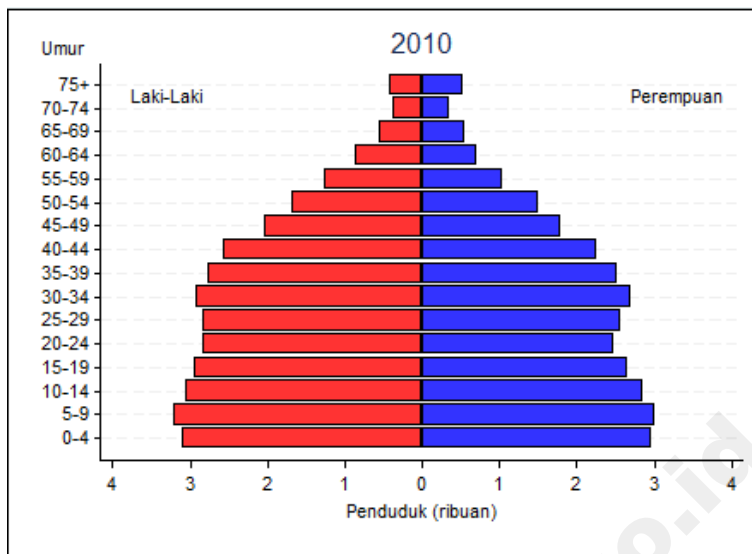
Gambar I.9
 PIRAMIDA PENDUDUK MINAHASA TENGGARA
 TAHUN 2010 – 2020



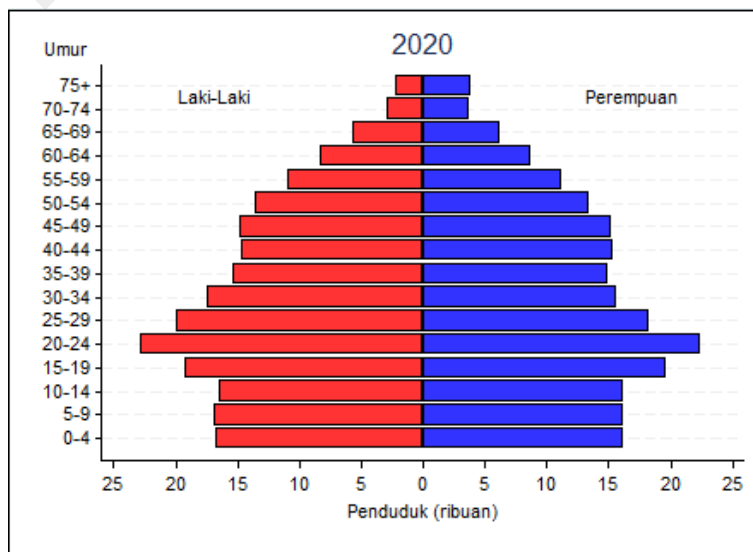
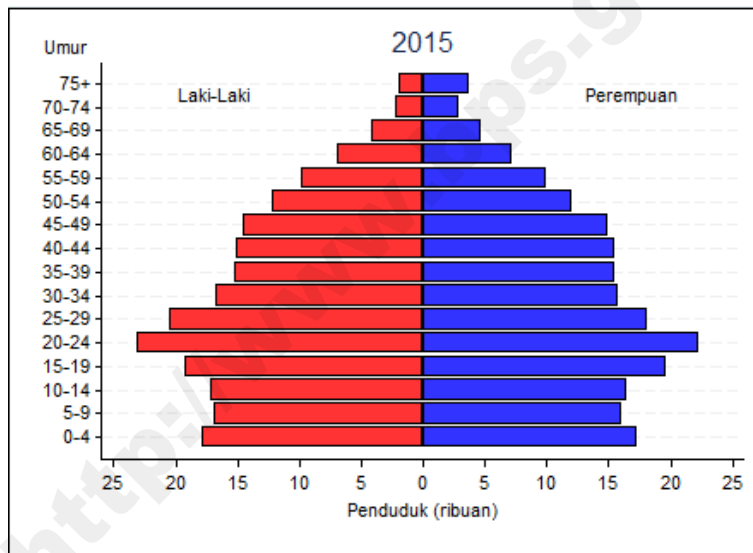
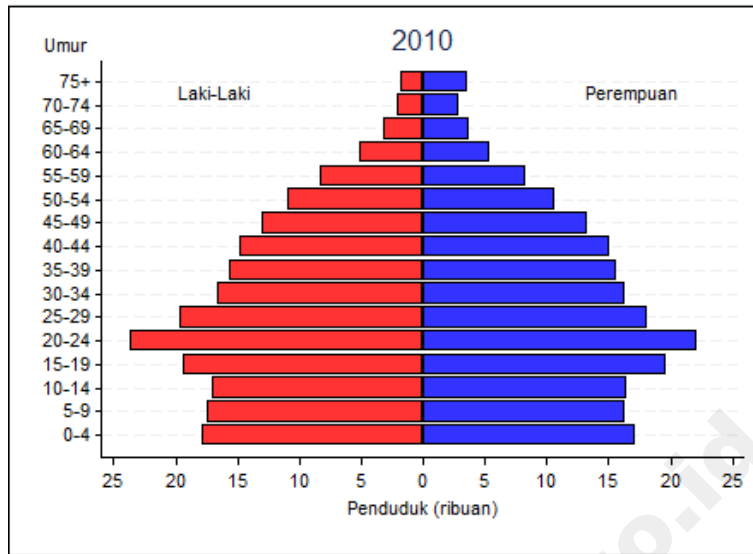
Gambar I.10
 PIRAMIDA PENDUDUK BOLAANG MONGONDOW SELATAN
 TAHUN 2010 – 2020



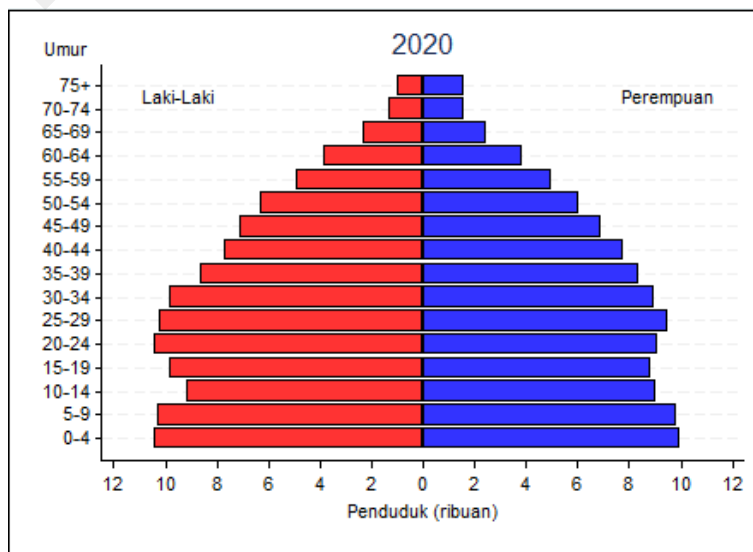
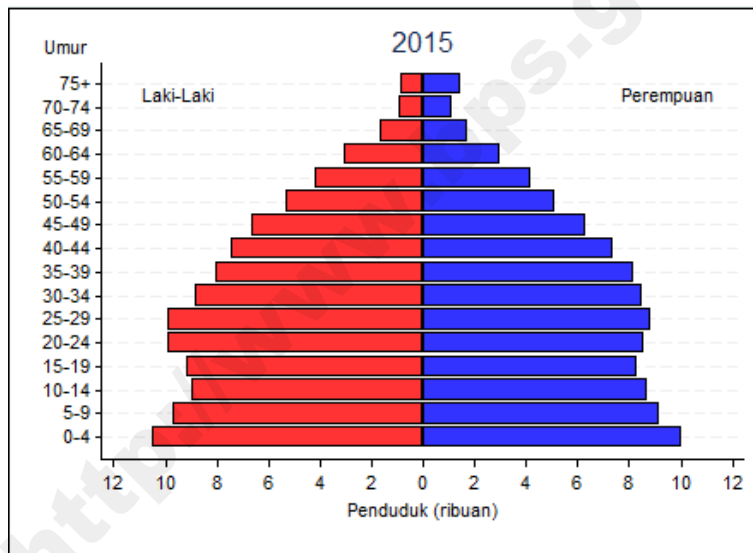
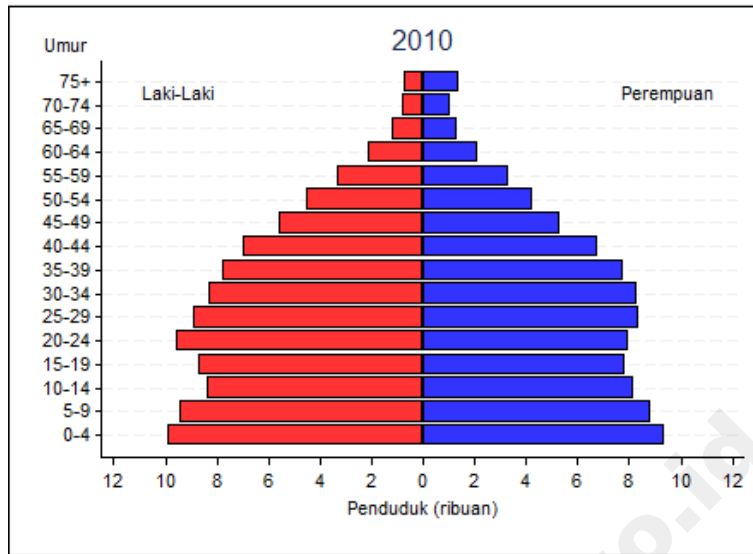
Gambar I.11
 PIRAMIDA PENDUDUK BOLAANG MONGONDOW TIMUR
 TAHUN 2010 – 2020



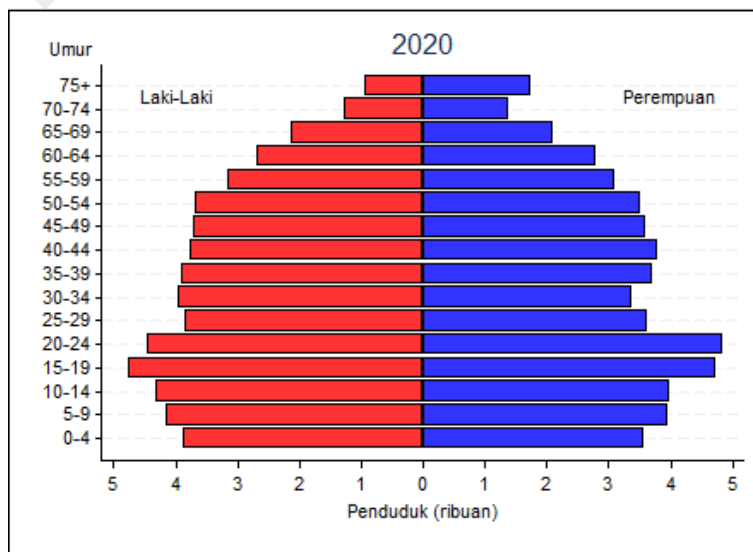
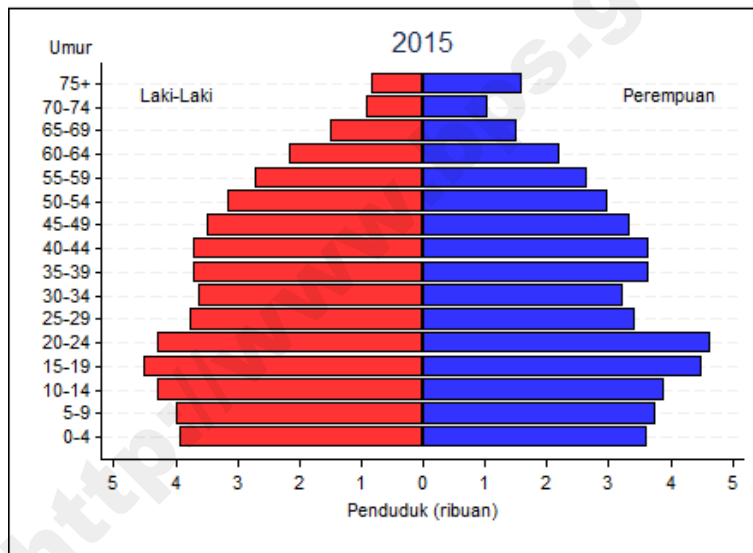
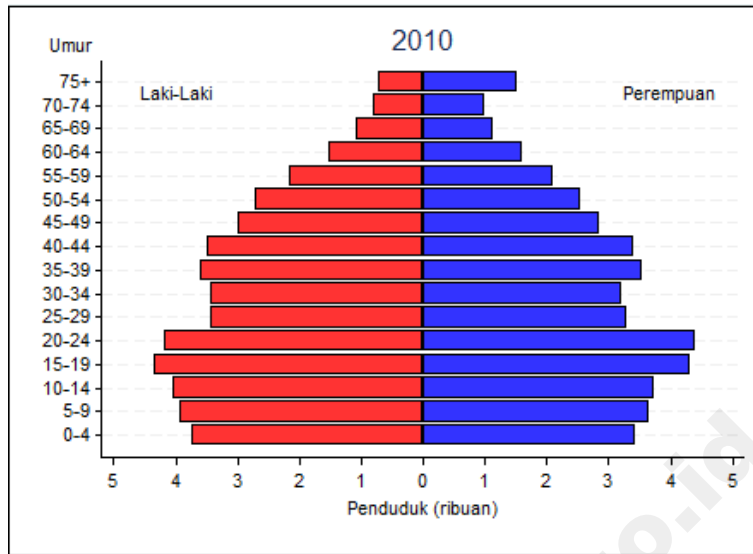
Gambar I.12
 PIRAMIDA PENDUDUK KOTA MANADO
 TAHUN 2010 – 2020



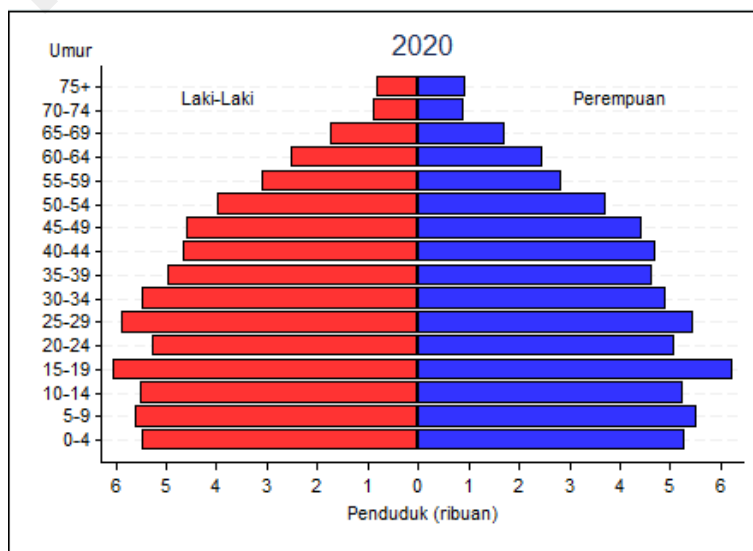
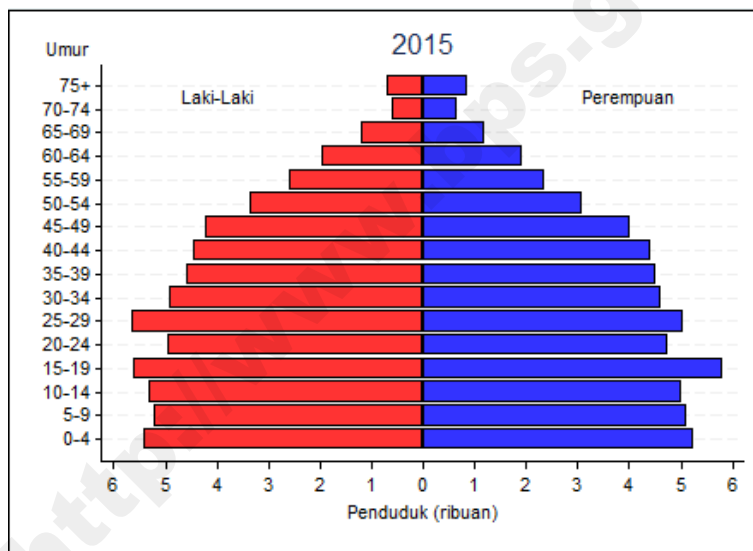
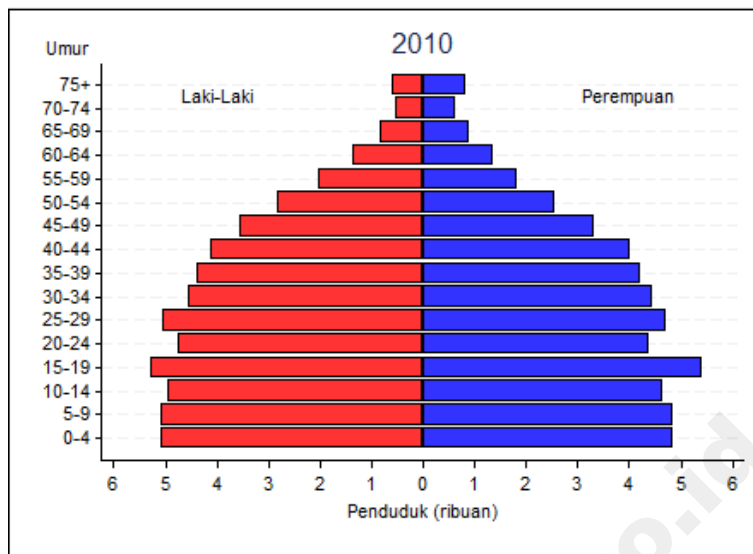
Gambar I.13
 PIRAMIDA PENDUDUK KOTA BITUNG
 TAHUN 2010 – 2020



Gambar I.14
 PIRAMIDA PENDUDUK KOTA TOMOHON
 TAHUN 2010 – 2020



Gambar I.15
 PIRAMIDA PENDUDUK KOTA KOTAMABAGU
 TAHUN 2010 – 2020



Tabel II.1.1
 PROYEKSI PENDUDUK
 MENURUT JENIS KELAMIN DAN KELOMPOK UMUR
 TAHUN 2010 - 2020

BOLAANG MONGONDOW

LAKI-LAKI

KELOMPOK UMUR	2010	2011	2012	2013	2014	2015	2016	2017	2018	2019	2020
(1)	(2)	(3)	(4)	(5)	(6)	(7)	(8)	(9)	(10)	(11)	(12)
0-4	11.165	11.274	11.414	11.558	11.692	11.745	11.711	11.683	11.666	11.656	11.632
5-9	11.205	11.316	11.348	11.401	11.395	11.394	11.504	11.651	11.790	11.932	11.992
10-14	10.754	10.870	10.982	11.099	11.238	11.392	11.505	11.537	11.581	11.580	11.581
15-19	9.925	9.963	10.039	10.146	10.262	10.364	10.474	10.581	10.684	10.822	10.972
20-24	8.367	8.479	8.552	8.608	8.618	8.593	8.629	8.698	8.788	8.893	8.986
25-29	9.333	9.545	9.708	9.894	10.084	10.261	10.391	10.479	10.535	10.548	10.518
30-34	9.322	9.335	9.441	9.585	9.757	9.912	10.129	10.298	10.482	10.683	10.868
35-39	9.148	9.229	9.283	9.336	9.355	9.388	9.395	9.499	9.633	9.805	9.963
40-44	8.104	8.269	8.393	8.497	8.579	8.641	8.716	8.766	8.809	8.831	8.863
45-49	6.583	6.802	7.046	7.317	7.552	7.725	7.880	7.999	8.092	8.174	8.234
50-54	5.484	5.672	5.841	6.019	6.206	6.410	6.623	6.861	7.119	7.350	7.523
55-59	4.183	4.432	4.661	4.881	5.080	5.258	5.440	5.605	5.771	5.955	6.156
60-64	2.901	3.108	3.353	3.624	3.891	4.132	4.379	4.609	4.825	5.025	5.204
65-69	1.912	2.025	2.144	2.281	2.450	2.657	2.849	3.079	3.329	3.577	3.803
70-74	1.273	1.296	1.326	1.364	1.408	1.454	1.545	1.639	1.747	1.880	2.042
75+	1.656	1.701	1.736	1.784	1.836	1.885	1.934	1.986	2.049	2.120	2.192
JUMLAH	111.315	113.316	115.267	117.394	119.403	121.211	123.104	124.970	126.900	128.831	130.529

Tabel II.1.2
 PROYEKSI PENDUDUK
 MENURUT JENIS KELAMIN DAN KELOMPOK UMUR
 TAHUN 2010 - 2020

BOLAANG MONGONDOW

PEREMPUAN

KELOMPOK UMUR	2010	2011	2012	2013	2014	2015	2016	2017	2018	2019	2020
(1)	(2)	(3)	(4)	(5)	(6)	(7)	(8)	(9)	(10)	(11)	(12)
0-4	10.423	10.571	10.696	10.818	10.939	11.098	11.072	11.049	11.031	11.011	11.001
5-9	10.451	10.557	10.668	10.762	10.834	10.808	10.970	11.096	11.226	11.348	11.513
10-14	10.087	10.192	10.295	10.384	10.494	10.628	10.741	10.852	10.951	11.015	10.990
15-19	8.595	8.682	8.778	8.869	8.968	9.072	9.173	9.263	9.344	9.436	9.555
20-24	7.584	7.704	7.834	7.937	8.027	8.094	8.182	8.272	8.362	8.454	8.552
25-29	8.675	8.723	8.778	8.866	8.978	9.120	9.268	9.415	9.537	9.637	9.713
30-34	9.000	9.029	9.071	9.106	9.143	9.160	9.215	9.264	9.356	9.464	9.610
35-39	8.337	8.438	8.516	8.583	8.652	8.727	8.762	8.799	8.831	8.861	8.869
40-44	7.335	7.496	7.644	7.755	7.856	7.943	8.045	8.116	8.185	8.244	8.317
45-49	5.830	6.028	6.253	6.491	6.722	6.912	7.072	7.210	7.318	7.407	7.493
50-54	5.050	5.248	5.426	5.586	5.763	5.965	6.174	6.405	6.652	6.884	7.075
55-59	3.594	3.789	3.998	4.203	4.394	4.556	4.743	4.903	5.055	5.213	5.398
60-64	2.670	2.861	3.064	3.277	3.505	3.747	3.955	4.171	4.385	4.584	4.755
65-69	1.885	1.955	2.061	2.190	2.340	2.502	2.688	2.876	3.080	3.295	3.525
70-74	1.412	1.426	1.433	1.442	1.459	1.492	1.552	1.639	1.745	1.867	2.000
75+	2.056	2.060	2.087	2.105	2.127	2.154	2.177	2.205	2.227	2.260	2.306
JUMLAH	102.984	104.759	106.602	108.374	110.201	111.978	113.789	115.535	117.285	118.980	120.672

Tabel II.1.3
 PROYEKSI PENDUDUK
 MENURUT JENIS KELAMIN DAN KELOMPOK UMUR
 TAHUN 2010 - 2020

BOLAANG MONGONDOW

LAKI-LAKI + PEREMPUAN

KELOMPOK UMUR	2010	2011	2012	2013	2014	2015	2016	2017	2018	2019	2020
(1)	(2)	(3)	(4)	(5)	(6)	(7)	(8)	(9)	(10)	(11)	(12)
0-4	21.588	21.845	22.110	22.376	22.631	22.843	22.783	22.732	22.697	22.667	22.633
5-9	21.656	21.873	22.016	22.163	22.229	22.202	22.474	22.747	23.016	23.280	23.505
10-14	20.841	21.062	21.277	21.483	21.732	22.020	22.246	22.389	22.532	22.595	22.571
15-19	18.520	18.645	18.817	19.015	19.230	19.436	19.647	19.844	20.028	20.258	20.527
20-24	15.951	16.183	16.386	16.545	16.645	16.687	16.811	16.970	17.150	17.347	17.538
25-29	18.008	18.268	18.486	18.760	19.062	19.381	19.659	19.894	20.072	20.185	20.231
30-34	18.322	18.364	18.512	18.691	18.900	19.072	19.344	19.562	19.838	20.147	20.478
35-39	17.485	17.667	17.799	17.919	18.007	18.115	18.157	18.298	18.464	18.666	18.832
40-44	15.439	15.765	16.037	16.252	16.435	16.584	16.761	16.882	16.994	17.075	17.180
45-49	12.413	12.830	13.299	13.808	14.274	14.637	14.952	15.209	15.410	15.581	15.727
50-54	10.534	10.920	11.267	11.605	11.969	12.375	12.797	13.266	13.771	14.234	14.598
55-59	7.777	8.221	8.659	9.084	9.474	9.814	10.183	10.508	10.826	11.168	11.554
60-64	5.571	5.969	6.417	6.901	7.396	7.879	8.334	8.780	9.210	9.609	9.959
65-69	3.797	3.980	4.205	4.471	4.790	5.159	5.537	5.955	6.409	6.872	7.328
70-74	2.685	2.722	2.759	2.806	2.867	2.946	3.097	3.278	3.492	3.747	4.042
75+	3.712	3.761	3.823	3.889	3.963	4.039	4.111	4.191	4.276	4.380	4.498
JUMLAH	214.299	218.075	221.869	225.768	229.604	233.189	236.893	240.505	244.185	247.811	251.201

Tabel II.2.1
PROYEKSI PENDUDUK
MENURUT JENIS KELAMIN DAN KELOMPOK UMUR
TAHUN 2010 - 2020

MINAHASA

LAKI-LAKI

KELOMPOK UMUR	2010	2011	2012	2013	2014	2015	2016	2017	2018	2019	2020
(1)	(2)	(3)	(4)	(5)	(6)	(7)	(8)	(9)	(10)	(11)	(12)
0-4	12.732	12.757	12.809	12.853	12.893	12.852	12.711	12.568	12.440	12.309	12.184
5-9	13.317	13.347	13.274	13.214	13.098	12.994	13.015	13.063	13.103	13.133	13.092
10-14	13.018	13.057	13.083	13.102	13.156	13.233	13.256	13.176	13.109	12.981	12.879
15-19	13.159	13.110	13.101	13.119	13.159	13.188	13.220	13.237	13.247	13.288	13.364
20-24	13.714	13.794	13.797	13.761	13.662	13.519	13.466	13.453	13.469	13.500	13.531
25-29	11.606	11.777	11.878	11.997	12.126	12.242	12.299	12.293	12.249	12.145	12.014
30-34	11.582	11.510	11.542	11.612	11.721	11.817	11.978	12.070	12.177	12.291	12.403
35-39	12.324	12.337	12.307	12.265	12.189	12.135	12.047	12.072	12.134	12.233	12.329
40-44	12.436	12.589	12.673	12.713	12.730	12.722	12.728	12.690	12.638	12.547	12.493
45-49	10.836	11.111	11.415	11.744	12.021	12.202	12.347	12.422	12.454	12.459	12.451
50-54	9.918	10.181	10.398	10.616	10.854	11.124	11.401	11.708	12.040	12.313	12.499
55-59	8.191	8.614	8.986	9.325	9.626	9.882	10.143	10.359	10.573	10.802	11.077
60-64	5.691	6.050	6.473	6.935	7.383	7.779	8.179	8.531	8.851	9.129	9.377
65-69	4.010	4.216	4.427	4.668	4.972	5.349	5.692	6.094	6.529	6.951	7.327
70-74	3.047	3.083	3.126	3.188	3.261	3.342	3.522	3.704	3.913	4.171	4.495
75+	3.521	3.571	3.632	3.699	3.770	3.837	3.905	3.978	4.066	4.161	4.273
JUMLAH	159.102	161.104	162.921	164.811	166.621	168.217	169.909	171.418	172.992	174.413	175.788

Tabel II.2.2
 PROYEKSI PENDUDUK
 MENURUT JENIS KELAMIN DAN KELOMPOK UMUR
 TAHUN 2010 - 2020

MINAHASA

PEREMPUAN

KELOMPOK UMUR	2010	2011	2012	2013	2014	2015	2016	2017	2018	2019	2020
(1)	(2)	(3)	(4)	(5)	(6)	(7)	(8)	(9)	(10)	(11)	(12)
0-4	11.991	12.069	12.109	12.145	12.168	12.246	12.100	11.975	11.844	11.718	11.601
5-9	12.462	12.492	12.515	12.523	12.488	12.361	12.425	12.465	12.494	12.515	12.584
10-14	12.470	12.505	12.524	12.528	12.544	12.603	12.615	12.640	12.636	12.596	12.453
15-19	12.631	12.656	12.685	12.713	12.736	12.778	12.799	12.818	12.811	12.822	12.869
20-24	11.585	11.676	11.778	11.837	11.863	11.871	11.888	11.921	11.944	11.962	11.996
25-29	10.533	10.511	10.488	10.502	10.535	10.619	10.684	10.767	10.807	10.823	10.813
30-34	10.946	10.898	10.857	10.807	10.751	10.680	10.639	10.608	10.614	10.636	10.706
35-39	11.514	11.563	11.570	11.566	11.547	11.557	11.491	11.445	11.383	11.318	11.233
40-44	11.561	11.731	11.859	11.932	11.973	12.010	12.045	12.052	12.042	12.018	12.016
45-49	10.204	10.472	10.768	11.090	11.374	11.600	11.754	11.884	11.949	11.986	12.015
50-54	9.403	9.698	9.938	10.152	10.376	10.653	10.921	11.232	11.560	11.853	12.077
55-59	7.650	8.003	8.370	8.724	9.031	9.297	9.579	9.820	10.028	10.251	10.517
60-64	5.551	5.904	6.269	6.648	7.049	7.476	7.813	8.173	8.515	8.817	9.066
65-69	4.318	4.449	4.647	4.901	5.188	5.507	5.856	6.223	6.605	7.002	7.426
70-74	3.762	3.766	3.757	3.753	3.769	3.825	3.946	4.133	4.362	4.624	4.911
75+	5.625	5.630	5.636	5.650	5.667	5.703	5.726	5.747	5.778	5.822	5.895
JUMLAH	152.206	154.023	155.770	157.471	159.059	160.786	162.281	163.903	165.372	166.763	168.178

Tabel II.2.3
PROYEKSI PENDUDUK
MENURUT JENIS KELAMIN DAN KELOMPOK UMUR
TAHUN 2010 - 2020

MINAHASA

LAKI-LAKI + PEREMPUAN

KELOMPOK UMUR	2010	2011	2012	2013	2014	2015	2016	2017	2018	2019	2020
(1)	(2)	(3)	(4)	(5)	(6)	(7)	(8)	(9)	(10)	(11)	(12)
0-4	24.723	24.826	24.918	24.998	25.061	25.098	24.811	24.543	24.284	24.027	23.785
5-9	25.779	25.839	25.789	25.737	25.586	25.355	25.440	25.528	25.597	25.648	25.676
10-14	25.488	25.562	25.607	25.630	25.700	25.836	25.871	25.816	25.745	25.577	25.332
15-19	25.790	25.766	25.786	25.832	25.895	25.966	26.019	26.055	26.058	26.110	26.233
20-24	25.299	25.470	25.575	25.598	25.525	25.390	25.354	25.374	25.413	25.462	25.527
25-29	22.139	22.288	22.366	22.499	22.661	22.861	22.983	23.060	23.056	22.968	22.827
30-34	22.528	22.408	22.399	22.419	22.472	22.497	22.617	22.678	22.791	22.927	23.109
35-39	23.838	23.900	23.877	23.831	23.736	23.692	23.538	23.517	23.517	23.551	23.562
40-44	23.997	24.320	24.532	24.645	24.703	24.732	24.773	24.742	24.680	24.565	24.509
45-49	21.040	21.583	22.183	22.834	23.395	23.802	24.101	24.306	24.403	24.445	24.466
50-54	19.321	19.879	20.336	20.768	21.230	21.777	22.322	22.940	23.600	24.166	24.576
55-59	15.841	16.617	17.356	18.049	18.657	19.179	19.722	20.179	20.601	21.053	21.594
60-64	11.242	11.954	12.742	13.583	14.432	15.255	15.992	16.704	17.366	17.946	18.443
65-69	8.328	8.665	9.074	9.569	10.160	10.856	11.548	12.317	13.134	13.953	14.753
70-74	6.809	6.849	6.883	6.941	7.030	7.167	7.468	7.837	8.275	8.795	9.406
75+	9.146	9.201	9.268	9.349	9.437	9.540	9.631	9.725	9.844	9.983	10.168
JUMLAH	311.308	315.127	318.691	322.282	325.680	329.003	332.190	335.321	338.364	341.176	343.966

Tabel II.3.1
 PROYEKSI PENDUDUK
 MENURUT JENIS KELAMIN DAN KELOMPOK UMUR
 TAHUN 2010 - 2020

KEPULAUAN SANGIHE

LAKI-LAKI

KELOMPOK UMUR	2010	2011	2012	2013	2014	2015	2016	2017	2018	2019	2020
(1)	(2)	(3)	(4)	(5)	(6)	(7)	(8)	(9)	(10)	(11)	(12)
0-4	5.065	5.046	5.046	5.021	5.020	4.982	4.896	4.828	4.749	4.679	4.607
5-9	5.176	5.158	5.108	5.044	4.982	4.921	4.898	4.902	4.886	4.877	4.835
10-14	5.608	5.593	5.580	5.542	5.546	5.554	5.529	5.481	5.418	5.342	5.271
15-19	5.936	5.879	5.850	5.812	5.809	5.796	5.773	5.766	5.733	5.726	5.728
20-24	5.469	5.469	5.449	5.390	5.331	5.253	5.199	5.181	5.152	5.143	5.126
25-29	5.013	5.060	5.082	5.090	5.127	5.153	5.145	5.127	5.076	5.013	4.933
30-34	4.670	4.613	4.608	4.598	4.625	4.642	4.677	4.698	4.710	4.733	4.752
35-39	4.668	4.647	4.615	4.562	4.518	4.479	4.419	4.416	4.410	4.426	4.437
40-44	5.022	5.055	5.068	5.042	5.031	5.006	4.978	4.948	4.897	4.841	4.794
45-49	4.752	4.845	4.957	5.058	5.160	5.214	5.242	5.261	5.240	5.219	5.187
50-54	3.904	3.983	4.053	4.103	4.180	4.266	4.346	4.450	4.547	4.629	4.674
55-59	3.065	3.204	3.328	3.427	3.524	3.603	3.674	3.741	3.794	3.860	3.937
60-64	1.927	2.037	2.170	2.306	2.448	2.567	2.681	2.790	2.875	2.953	3.017
65-69	1.288	1.346	1.408	1.473	1.563	1.674	1.770	1.890	2.012	2.132	2.236
70-74	1.086	1.091	1.103	1.117	1.138	1.161	1.216	1.275	1.339	1.420	1.523
75+	1.153	1.166	1.175	1.192	1.211	1.227	1.239	1.257	1.276	1.300	1.328
JUMLAH	63.802	64.192	64.600	64.777	65.213	65.498	65.682	66.011	66.114	66.293	66.385

Tabel II.3.2
 PROYEKSI PENDUDUK
 MENURUT JENIS KELAMIN DAN KELOMPOK UMUR
 TAHUN 2010 - 2020

KEPULAUAN SANGIHE

PEREMPUAN

KELOMPOK UMUR	2010	2011	2012	2013	2014	2015	2016	2017	2018	2019	2020
(1)	(2)	(3)	(4)	(5)	(6)	(7)	(8)	(9)	(10)	(11)	(12)
0-4	4.659	4.658	4.648	4.641	4.622	4.618	4.541	4.459	4.388	4.316	4.248
5-9	4.855	4.835	4.818	4.798	4.756	4.673	4.674	4.655	4.643	4.624	4.623
10-14	5.312	5.291	5.272	5.249	5.223	5.210	5.190	5.158	5.134	5.089	5.003
15-19	5.217	5.195	5.181	5.168	5.144	5.124	5.107	5.073	5.048	5.022	5.011
20-24	4.886	4.892	4.906	4.909	4.888	4.853	4.836	4.811	4.799	4.779	4.764
25-29	4.726	4.683	4.649	4.637	4.623	4.626	4.630	4.630	4.626	4.605	4.572
30-34	4.467	4.418	4.379	4.338	4.290	4.231	4.193	4.151	4.133	4.118	4.119
35-39	4.710	4.697	4.676	4.652	4.616	4.583	4.535	4.486	4.441	4.393	4.338
40-44	4.872	4.910	4.937	4.944	4.932	4.910	4.899	4.866	4.837	4.800	4.771
45-49	4.634	4.724	4.832	4.954	5.048	5.111	5.154	5.171	5.175	5.162	5.144
50-54	3.757	3.850	3.924	3.990	4.054	4.130	4.212	4.301	4.405	4.492	4.548
55-59	3.065	3.187	3.316	3.435	3.538	3.613	3.704	3.771	3.832	3.896	3.972
60-64	2.116	2.236	2.364	2.496	2.630	2.769	2.882	2.990	3.101	3.192	3.263
65-69	1.533	1.571	1.634	1.714	1.804	1.902	2.012	2.124	2.243	2.367	2.494
70-74	1.496	1.490	1.479	1.470	1.470	1.482	1.522	1.584	1.662	1.755	1.853
75+	2.275	2.257	2.263	2.251	2.252	2.251	2.251	2.252	2.252	2.260	2.281
JUMLAH	62.580	62.894	63.278	63.646	63.890	64.086	64.342	64.482	64.719	64.870	65.004

Tabel II.3.3
 PROYEKSI PENDUDUK
 MENURUT JENIS KELAMIN DAN KELOMPOK UMUR
 TAHUN 2010 - 2020

KEPULAUAN SANGIHE

LAKI-LAKI + PEREMPUAN

KELOMPOK UMUR	2010	2011	2012	2013	2014	2015	2016	2017	2018	2019	2020
(1)	(2)	(3)	(4)	(5)	(6)	(7)	(8)	(9)	(10)	(11)	(12)
0-4	9.724	9.704	9.694	9.662	9.642	9.600	9.437	9.287	9.137	8.995	8.855
5-9	10.031	9.993	9.926	9.842	9.738	9.594	9.572	9.557	9.529	9.501	9.458
10-14	10.920	10.884	10.852	10.791	10.769	10.764	10.719	10.639	10.552	10.431	10.274
15-19	11.153	11.074	11.031	10.980	10.953	10.920	10.880	10.839	10.781	10.748	10.739
20-24	10.355	10.361	10.355	10.299	10.219	10.106	10.035	9.992	9.951	9.922	9.890
25-29	9.739	9.743	9.731	9.727	9.750	9.779	9.775	9.757	9.702	9.618	9.505
30-34	9.137	9.031	8.987	8.936	8.915	8.873	8.870	8.849	8.843	8.851	8.871
35-39	9.378	9.344	9.291	9.214	9.134	9.062	8.954	8.902	8.851	8.819	8.775
40-44	9.894	9.965	10.005	9.986	9.963	9.916	9.877	9.814	9.734	9.641	9.565
45-49	9.386	9.569	9.789	10.012	10.208	10.325	10.396	10.432	10.415	10.381	10.331
50-54	7.661	7.833	7.977	8.093	8.234	8.396	8.558	8.751	8.952	9.121	9.222
55-59	6.130	6.391	6.644	6.862	7.062	7.216	7.378	7.512	7.626	7.756	7.909
60-64	4.043	4.273	4.534	4.802	5.078	5.336	5.563	5.780	5.976	6.145	6.280
65-69	2.821	2.917	3.042	3.187	3.367	3.576	3.782	4.014	4.255	4.499	4.730
70-74	2.582	2.581	2.582	2.587	2.608	2.643	2.738	2.859	3.001	3.175	3.376
75+	3.428	3.423	3.438	3.443	3.463	3.478	3.490	3.509	3.528	3.560	3.609
JUMLAH	126.382	127.086	127.878	128.423	129.103	129.584	130.024	130.493	130.833	131.163	131.389

Tabel II.4.1
 PROYEKSI PENDUDUK
 MENURUT JENIS KELAMIN DAN KELOMPOK UMUR
 TAHUN 2010 - 2020

KEPULAUAN TALAUD

LAKI-LAKI

KELOMPOK UMUR	2010	2011	2012	2013	2014	2015	2016	2017	2018	2019	2020
(1)	(2)	(3)	(4)	(5)	(6)	(7)	(8)	(9)	(10)	(11)	(12)
0-4	4.062	4.081	4.110	4.131	4.148	4.148	4.114	4.074	4.037	4.009	3.980
5-9	4.004	4.025	4.015	4.002	3.972	3.952	3.970	3.992	4.007	4.032	4.032
10-14	4.248	4.272	4.293	4.306	4.329	4.367	4.388	4.369	4.350	4.324	4.303
15-19	3.673	3.668	3.677	3.688	3.705	3.723	3.742	3.754	3.760	3.787	3.820
20-24	3.135	3.160	3.171	3.168	3.148	3.125	3.122	3.125	3.131	3.150	3.166
25-29	3.388	3.447	3.487	3.527	3.569	3.615	3.642	3.646	3.636	3.619	3.591
30-34	3.526	3.512	3.534	3.560	3.598	3.638	3.699	3.733	3.770	3.820	3.866
35-39	3.230	3.243	3.244	3.239	3.222	3.217	3.203	3.216	3.235	3.273	3.310
40-44	2.975	3.020	3.050	3.064	3.071	3.079	3.089	3.086	3.076	3.066	3.061
45-49	2.784	2.863	2.950	3.039	3.114	3.171	3.218	3.243	3.254	3.269	3.276
50-54	2.480	2.552	2.615	2.673	2.736	2.813	2.891	2.974	3.062	3.142	3.199
55-59	1.863	1.965	2.056	2.136	2.207	2.274	2.341	2.394	2.445	2.509	2.579
60-64	1.313	1.398	1.502	1.611	1.717	1.814	1.913	1.999	2.076	2.150	2.215
65-69	793	836	881	930	993	1.070	1.142	1.225	1.314	1.405	1.485
70-74	604	611	623	636	651	670	707	746	788	843	911
75+	641	656	662	678	694	707	719	735	752	774	800
JUMLAH	42.719	43.309	43.870	44.388	44.874	45.383	45.900	46.311	46.693	47.172	47.594

Tabel II.4.2
 PROYEKSI PENDUDUK
 MENURUT JENIS KELAMIN DAN KELOMPOK UMUR
 TAHUN 2010 - 2020

KEPULAUAN TALAUD

PEREMPUAN

KELOMPOK UMUR	2010	2011	2012	2013	2014	2015	2016	2017	2018	2019	2020
(1)	(2)	(3)	(4)	(5)	(6)	(7)	(8)	(9)	(10)	(11)	(12)
0-4	3.771	3.805	3.823	3.845	3.864	3.884	3.853	3.819	3.793	3.760	3.732
5-9	3.644	3.661	3.674	3.688	3.688	3.647	3.679	3.695	3.722	3.734	3.764
10-14	3.862	3.882	3.894	3.906	3.922	3.937	3.955	3.967	3.986	3.982	3.945
15-19	3.163	3.179	3.191	3.207	3.220	3.229	3.247	3.255	3.269	3.276	3.296
20-24	2.762	2.792	2.818	2.840	2.856	2.853	2.867	2.877	2.896	2.907	2.923
25-29	3.208	3.211	3.211	3.224	3.245	3.265	3.299	3.327	3.356	3.366	3.370
30-34	3.586	3.580	3.571	3.567	3.560	3.535	3.537	3.533	3.552	3.566	3.599
35-39	3.116	3.135	3.143	3.149	3.153	3.153	3.147	3.138	3.136	3.126	3.109
40-44	2.775	2.822	2.857	2.883	2.901	2.907	2.927	2.932	2.941	2.941	2.949
45-49	2.663	2.740	2.821	2.914	2.998	3.053	3.106	3.145	3.176	3.191	3.205
50-54	2.347	2.427	2.491	2.552	2.617	2.683	2.761	2.843	2.938	3.020	3.083
55-59	1.838	1.927	2.018	2.109	2.191	2.252	2.328	2.391	2.452	2.511	2.583
60-64	1.319	1.407	1.494	1.590	1.690	1.792	1.879	1.969	2.059	2.135	2.202
65-69	901	931	974	1.030	1.092	1.160	1.238	1.317	1.404	1.491	1.585
70-74	805	810	808	811	817	828	859	900	955	1.014	1.081
75+	1.207	1.207	1.221	1.223	1.234	1.242	1.254	1.259	1.271	1.283	1.300
JUMLAH	40.967	41.516	42.009	42.538	43.048	43.420	43.936	44.367	44.906	45.303	45.726

Tabel II.4.3
PROYEKSI PENDUDUK
MENURUT JENIS KELAMIN DAN KELOMPOK UMUR
TAHUN 2010 - 2020

KEPULAUAN TALAUD

LAKI-LAKI + PEREMPUAN

KELOMPOK UMUR	2010	2011	2012	2013	2014	2015	2016	2017	2018	2019	2020
(1)	(2)	(3)	(4)	(5)	(6)	(7)	(8)	(9)	(10)	(11)	(12)
0-4	7.833	7.886	7.933	7.976	8.012	8.032	7.967	7.893	7.830	7.769	7.712
5-9	7.648	7.686	7.689	7.690	7.660	7.599	7.649	7.687	7.729	7.766	7.796
10-14	8.110	8.154	8.187	8.212	8.251	8.304	8.343	8.336	8.336	8.306	8.248
15-19	6.836	6.847	6.868	6.895	6.925	6.952	6.989	7.009	7.029	7.063	7.116
20-24	5.897	5.952	5.989	6.008	6.004	5.978	5.989	6.002	6.027	6.057	6.089
25-29	6.596	6.658	6.698	6.751	6.814	6.880	6.941	6.973	6.992	6.985	6.961
30-34	7.112	7.092	7.105	7.127	7.158	7.173	7.236	7.266	7.322	7.386	7.465
35-39	6.346	6.378	6.387	6.388	6.375	6.370	6.350	6.354	6.371	6.399	6.419
40-44	5.750	5.842	5.907	5.947	5.972	5.986	6.016	6.018	6.017	6.007	6.010
45-49	5.447	5.603	5.771	5.953	6.112	6.224	6.324	6.388	6.430	6.460	6.481
50-54	4.827	4.979	5.106	5.225	5.353	5.496	5.652	5.817	6.000	6.162	6.282
55-59	3.701	3.892	4.074	4.245	4.398	4.526	4.669	4.785	4.897	5.020	5.162
60-64	2.632	2.805	2.996	3.201	3.407	3.606	3.792	3.968	4.135	4.285	4.417
65-69	1.694	1.767	1.855	1.960	2.085	2.230	2.380	2.542	2.718	2.896	3.070
70-74	1.409	1.421	1.431	1.447	1.468	1.498	1.566	1.646	1.743	1.857	1.992
75+	1.848	1.863	1.883	1.901	1.928	1.949	1.973	1.994	2.023	2.057	2.100
JUMLAH	83.686	84.825	85.879	86.926	87.922	88.803	89.836	90.678	91.599	92.475	93.320

Tabel II.5.1
PROYEKSI PENDUDUK
MENURUT JENIS KELAMIN DAN KELOMPOK UMUR
TAHUN 2010 - 2020

MINAHASA SELATAN

LAKI-LAKI

KELOMPOK UMUR	2010	2011	2012	2013	2014	2015	2016	2017	2018	2019	2020
(1)	(2)	(3)	(4)	(5)	(6)	(7)	(8)	(9)	(10)	(11)	(12)
0-4	8.724	8.730	8.756	8.763	8.765	8.732	8.619	8.507	8.406	8.302	8.209
5-9	9.497	9.508	9.445	9.378	9.269	9.190	9.186	9.204	9.216	9.220	9.181
10-14	9.325	9.344	9.350	9.341	9.352	9.402	9.398	9.325	9.263	9.155	9.071
15-19	7.691	7.653	7.638	7.630	7.631	7.644	7.648	7.643	7.637	7.646	7.681
20-24	6.765	6.797	6.790	6.756	6.687	6.614	6.574	6.556	6.553	6.557	6.563
25-29	7.122	7.218	7.272	7.326	7.384	7.450	7.469	7.451	7.413	7.335	7.248
30-34	7.750	7.691	7.705	7.732	7.781	7.841	7.933	7.977	8.037	8.095	8.159
35-39	8.209	8.209	8.178	8.130	8.055	8.017	7.942	7.945	7.973	8.022	8.074
40-44	8.068	8.159	8.203	8.208	8.195	8.186	8.173	8.133	8.088	8.013	7.969
45-49	6.844	7.009	7.192	7.382	7.533	7.643	7.717	7.751	7.758	7.745	7.732
50-54	6.283	6.441	6.572	6.692	6.821	6.989	7.148	7.326	7.523	7.678	7.784
55-59	5.196	5.456	5.686	5.885	6.057	6.216	6.366	6.490	6.613	6.745	6.906
60-64	3.433	3.646	3.895	4.163	4.419	4.654	4.882	5.084	5.266	5.421	5.562
65-69	2.299	2.414	2.531	2.662	2.828	3.040	3.229	3.451	3.691	3.920	4.129
70-74	1.833	1.850	1.874	1.907	1.946	1.993	2.095	2.199	2.319	2.468	2.656
75+	2.049	2.078	2.109	2.142	2.180	2.219	2.249	2.286	2.331	2.389	2.448
JUMLAH	101.088	102.203	103.196	104.097	104.903	105.830	106.628	107.328	108.087	108.711	109.372

Tabel II.5.2
 PROYEKSI PENDUDUK
 MENURUT JENIS KELAMIN DAN KELOMPOK UMUR
 TAHUN 2010 - 2020

MINAHASA SELATAN

PEREMPUAN

KELOMPOK UMUR	2010	2011	2012	2013	2014	2015	2016	2017	2018	2019	2020
(1)	(2)	(3)	(4)	(5)	(6)	(7)	(8)	(9)	(10)	(11)	(12)
0-4	8.299	8.334	8.338	8.353	8.361	8.391	8.286	8.180	8.084	7.979	7.894
5-9	8.923	8.924	8.915	8.910	8.876	8.761	8.802	8.810	8.822	8.815	8.859
10-14	8.619	8.622	8.612	8.601	8.605	8.621	8.626	8.623	8.612	8.566	8.467
15-19	6.793	6.793	6.791	6.796	6.801	6.806	6.811	6.806	6.796	6.786	6.806
20-24	5.865	5.896	5.930	5.951	5.959	5.945	5.950	5.952	5.956	5.953	5.966
25-29	6.435	6.406	6.373	6.375	6.387	6.421	6.457	6.493	6.510	6.507	6.496
30-34	7.487	7.439	7.389	7.346	7.303	7.235	7.204	7.169	7.164	7.166	7.208
35-39	7.552	7.566	7.550	7.538	7.520	7.504	7.458	7.410	7.361	7.303	7.243
40-44	7.357	7.446	7.507	7.544	7.563	7.565	7.585	7.573	7.555	7.527	7.520
45-49	6.121	6.268	6.427	6.609	6.775	6.890	6.978	7.039	7.071	7.079	7.091
50-54	5.888	6.059	6.191	6.316	6.451	6.604	6.765	6.942	7.136	7.302	7.436
55-59	4.856	5.071	5.286	5.503	5.693	5.842	6.018	6.155	6.278	6.403	6.567
60-64	3.346	3.551	3.761	3.984	4.218	4.462	4.662	4.864	5.062	5.230	5.374
65-69	2.391	2.459	2.561	2.697	2.852	3.018	3.208	3.400	3.603	3.813	4.042
70-74	2.149	2.148	2.135	2.129	2.133	2.160	2.225	2.326	2.453	2.595	2.752
75+	2.931	2.924	2.913	2.919	2.917	2.928	2.940	2.943	2.951	2.960	2.993
JUMLAH	95.012	95.906	96.679	97.571	98.414	99.153	99.975	100.685	101.414	101.984	102.714

Tabel II.5.3
 PROYEKSI PENDUDUK
 MENURUT JENIS KELAMIN DAN KELOMPOK UMUR
 TAHUN 2010 - 2020

MINAHASA SELATAN

LAKI-LAKI + PEREMPUAN

KELOMPOK UMUR	2010	2011	2012	2013	2014	2015	2016	2017	2018	2019	2020
(1)	(2)	(3)	(4)	(5)	(6)	(7)	(8)	(9)	(10)	(11)	(12)
0-4	17.023	17.064	17.094	17.116	17.126	17.123	16.905	16.687	16.490	16.281	16.103
5-9	18.420	18.432	18.360	18.288	18.145	17.951	17.988	18.014	18.038	18.035	18.040
10-14	17.944	17.966	17.962	17.942	17.957	18.023	18.024	17.948	17.875	17.721	17.538
15-19	14.484	14.446	14.429	14.426	14.432	14.450	14.459	14.449	14.433	14.432	14.487
20-24	12.630	12.693	12.720	12.707	12.646	12.559	12.524	12.508	12.509	12.510	12.529
25-29	13.557	13.624	13.645	13.701	13.771	13.871	13.926	13.944	13.923	13.842	13.744
30-34	15.237	15.130	15.094	15.078	15.084	15.076	15.137	15.146	15.201	15.261	15.367
35-39	15.761	15.775	15.728	15.668	15.575	15.521	15.400	15.355	15.334	15.325	15.317
40-44	15.425	15.605	15.710	15.752	15.758	15.751	15.758	15.706	15.643	15.540	15.489
45-49	12.965	13.277	13.619	13.991	14.308	14.533	14.695	14.790	14.829	14.824	14.823
50-54	12.171	12.500	12.763	13.008	13.272	13.593	13.913	14.268	14.659	14.980	15.220
55-59	10.052	10.527	10.972	11.388	11.750	12.058	12.384	12.645	12.891	13.148	13.473
60-64	6.779	7.197	7.656	8.147	8.637	9.116	9.544	9.948	10.328	10.651	10.936
65-69	4.690	4.873	5.092	5.359	5.680	6.058	6.437	6.851	7.294	7.733	8.171
70-74	3.982	3.998	4.009	4.036	4.079	4.153	4.320	4.525	4.772	5.063	5.408
75+	4.980	5.002	5.022	5.061	5.097	5.147	5.189	5.229	5.282	5.349	5.441
JUMLAH	196.100	198.109	199.875	201.668	203.317	204.983	206.603	208.013	209.501	210.695	212.086

Tabel II.6.1
PROYEKSI PENDUDUK
MENURUT JENIS KELAMIN DAN KELOMPOK UMUR
TAHUN 2010 - 2020

MINAHASA UTARA

LAKI-LAKI

KELOMPOK UMUR	2010	2011	2012	2013	2014	2015	2016	2017	2018	2019	2020
(1)	(2)	(3)	(4)	(5)	(6)	(7)	(8)	(9)	(10)	(11)	(12)
0-4	8.880	8.886	8.917	8.951	8.961	8.942	8.820	8.736	8.641	8.549	8.464
5-9	8.874	8.883	8.827	8.793	8.698	8.638	8.630	8.675	8.696	8.714	8.689
10-14	8.682	8.699	8.708	8.725	8.744	8.806	8.798	8.758	8.708	8.622	8.554
15-19	8.401	8.360	8.348	8.364	8.372	8.401	8.399	8.423	8.424	8.449	8.498
20-24	8.959	9.000	8.995	8.976	8.894	8.811	8.753	8.758	8.763	8.783	8.804
25-29	7.895	8.002	8.064	8.149	8.219	8.308	8.325	8.332	8.298	8.227	8.139
30-34	7.667	7.608	7.625	7.675	7.732	7.805	7.890	7.962	8.029	8.102	8.176
35-39	7.216	7.215	7.192	7.171	7.112	7.090	7.019	7.045	7.076	7.133	7.190
40-44	6.941	7.019	7.060	7.086	7.081	7.084	7.070	7.059	7.026	6.974	6.945
45-49	5.886	6.028	6.188	6.370	6.506	6.612	6.673	6.724	6.736	6.739	6.735
50-54	5.328	5.462	5.575	5.694	5.809	5.962	6.095	6.268	6.442	6.587	6.687
55-59	4.291	4.506	4.697	4.876	5.022	5.164	5.285	5.407	5.515	5.634	5.777
60-64	2.809	2.983	3.188	3.418	3.631	3.830	4.015	4.195	4.350	4.487	4.608
65-69	1.715	1.800	1.888	1.993	2.117	2.282	2.421	2.596	2.780	2.957	3.120
70-74	1.275	1.287	1.304	1.331	1.358	1.394	1.465	1.543	1.630	1.736	1.872
75+	1.460	1.479	1.501	1.532	1.558	1.590	1.612	1.646	1.678	1.718	1.765
JUMLAH	96.279	97.217	98.077	99.104	99.814	100.719	101.270	102.127	102.792	103.411	104.023

Tabel II.6.2
PROYEKSI PENDUDUK
MENURUT JENIS KELAMIN DAN KELOMPOK UMUR
TAHUN 2010 - 2020

MINAHASA UTARA

PEREMPUAN

KELOMPOK UMUR	2010	2011	2012	2013	2014	2015	2016	2017	2018	2019	2020
(1)	(2)	(3)	(4)	(5)	(6)	(7)	(8)	(9)	(10)	(11)	(12)
0-4	8.675	8.714	8.745	8.757	8.775	8.820	8.728	8.619	8.524	8.437	8.345
5-9	8.478	8.483	8.503	8.491	8.467	8.373	8.426	8.440	8.458	8.475	8.514
10-14	8.053	8.059	8.077	8.064	8.075	8.103	8.122	8.125	8.121	8.099	8.002
15-19	7.855	7.857	7.879	7.880	7.897	7.913	7.937	7.935	7.929	7.938	7.960
20-24	7.879	7.927	7.999	8.021	8.039	8.033	8.055	8.063	8.076	8.092	8.105
25-29	7.461	7.433	7.423	7.420	7.448	7.497	7.553	7.598	7.622	7.635	7.619
30-34	7.452	7.407	7.382	7.335	7.300	7.243	7.228	7.196	7.197	7.218	7.258
35-39	7.157	7.174	7.182	7.165	7.154	7.150	7.117	7.078	7.042	7.007	6.951
40-44	6.582	6.664	6.740	6.768	6.792	6.806	6.834	6.827	6.818	6.808	6.800
45-49	5.800	5.942	6.113	6.283	6.446	6.565	6.660	6.721	6.758	6.780	6.789
50-54	5.125	5.276	5.408	5.515	5.640	5.781	5.933	6.092	6.268	6.429	6.546
55-59	4.169	4.356	4.556	4.740	4.909	5.046	5.206	5.327	5.439	5.561	5.702
60-64	2.759	2.929	3.112	3.294	3.493	3.700	3.875	4.045	4.213	4.364	4.484
65-69	1.869	1.923	2.010	2.116	2.241	2.375	2.529	2.684	2.846	3.021	3.199
70-74	1.585	1.585	1.582	1.577	1.585	1.606	1.659	1.734	1.829	1.941	2.060
75+	2.332	2.330	2.336	2.339	2.344	2.354	2.366	2.374	2.385	2.408	2.432
JUMLAH	93.231	94.059	95.047	95.765	96.605	97.365	98.228	98.858	99.525	100.213	100.766

Tabel II.6.3
PROYEKSI PENDUDUK
MENURUT JENIS KELAMIN DAN KELOMPOK UMUR
TAHUN 2010 - 2020

MINAHASA UTARA

LAKI-LAKI + PEREMPUAN

KELOMPOK UMUR	2010	2011	2012	2013	2014	2015	2016	2017	2018	2019	2020
(1)	(2)	(3)	(4)	(5)	(6)	(7)	(8)	(9)	(10)	(11)	(12)
0-4	17.555	17.600	17.662	17.708	17.736	17.762	17.548	17.355	17.165	16.986	16.809
5-9	17.352	17.366	17.330	17.284	17.165	17.011	17.056	17.115	17.154	17.189	17.203
10-14	16.735	16.758	16.785	16.789	16.819	16.909	16.920	16.883	16.829	16.721	16.556
15-19	16.256	16.217	16.227	16.244	16.269	16.314	16.336	16.358	16.353	16.387	16.458
20-24	16.838	16.927	16.994	16.997	16.933	16.844	16.808	16.821	16.839	16.875	16.909
25-29	15.356	15.435	15.487	15.569	15.667	15.805	15.878	15.930	15.920	15.862	15.758
30-34	15.119	15.015	15.007	15.010	15.032	15.048	15.118	15.158	15.226	15.320	15.434
35-39	14.373	14.389	14.374	14.336	14.266	14.240	14.136	14.123	14.118	14.140	14.141
40-44	13.523	13.683	13.800	13.854	13.873	13.890	13.904	13.886	13.844	13.782	13.745
45-49	11.686	11.970	12.301	12.653	12.952	13.177	13.333	13.445	13.494	13.519	13.524
50-54	10.453	10.738	10.983	11.209	11.449	11.743	12.028	12.360	12.710	13.016	13.233
55-59	8.460	8.862	9.253	9.616	9.931	10.210	10.491	10.734	10.954	11.195	11.479
60-64	5.568	5.912	6.300	6.712	7.124	7.530	7.890	8.240	8.563	8.851	9.092
65-69	3.584	3.723	3.898	4.109	4.358	4.657	4.950	5.280	5.626	5.978	6.319
70-74	2.860	2.872	2.886	2.908	2.943	3.000	3.124	3.277	3.459	3.677	3.932
75+	3.792	3.809	3.837	3.871	3.902	3.944	3.978	4.020	4.063	4.126	4.197
JUMLAH	189.510	191.276	193.124	194.869	196.419	198.084	199.498	200.985	202.317	203.624	204.789

Tabel II.7.1
 PROYEKSI PENDUDUK
 MENURUT JENIS KELAMIN DAN KELOMPOK UMUR
 TAHUN 2010 - 2020

BOLAANG MONGONDOW UTARA

LAKI-LAKI

KELOMPOK UMUR	2010	2011	2012	2013	2014	2015	2016	2017	2018	2019	2020
(1)	(2)	(3)	(4)	(5)	(6)	(7)	(8)	(9)	(10)	(11)	(12)
0-4	3.716	3.748	3.794	3.835	3.874	3.883	3.859	3.845	3.839	3.818	3.806
5-9	4.034	4.071	4.081	4.092	4.084	4.075	4.100	4.147	4.196	4.228	4.244
10-14	3.720	3.757	3.794	3.827	3.871	3.916	3.940	3.947	3.962	3.942	3.939
15-19	3.247	3.257	3.281	3.308	3.343	3.369	3.393	3.424	3.456	3.485	3.530
20-24	2.784	2.819	2.842	2.856	2.855	2.841	2.843	2.862	2.891	2.912	2.940
25-29	2.961	3.025	3.076	3.128	3.184	3.234	3.263	3.286	3.304	3.293	3.281
30-34	2.779	2.780	2.810	2.848	2.896	2.935	2.990	3.036	3.089	3.134	3.186
35-39	2.913	2.935	2.952	2.964	2.966	2.970	2.961	2.991	3.032	3.073	3.118
40-44	2.471	2.518	2.555	2.582	2.604	2.616	2.630	2.643	2.655	2.649	2.656
45-49	2.155	2.226	2.304	2.388	2.461	2.512	2.554	2.590	2.619	2.633	2.651
50-54	1.735	1.793	1.845	1.897	1.954	2.014	2.074	2.145	2.227	2.288	2.339
55-59	1.284	1.360	1.429	1.494	1.553	1.605	1.654	1.702	1.753	1.800	1.859
60-64	877	939	1.013	1.093	1.172	1.241	1.311	1.378	1.442	1.494	1.547
65-69	643	680	720	765	820	888	949	1.022	1.106	1.184	1.257
70-74	413	421	430	443	455	470	497	526	560	601	653
75+	469	483	493	506	520	533	545	553	573	589	609
JUMLAH	36.201	36.812	37.419	38.026	38.612	39.102	39.563	40.097	40.704	41.123	41.615

Tabel II.7.2
 PROYEKSI PENDUDUK
 MENURUT JENIS KELAMIN DAN KELOMPOK UMUR
 TAHUN 2010 - 2020

BOLAANG MONGONDOW UTARA

PEREMPUAN

KELOMPOK UMUR	2010	2011	2012	2013	2014	2015	2016	2017	2018	2019	2020
(1)	(2)	(3)	(4)	(5)	(6)	(7)	(8)	(9)	(10)	(11)	(12)
0-4	3.636	3.675	3.709	3.742	3.770	3.820	3.810	3.795	3.765	3.755	3.748
5-9	3.764	3.788	3.819	3.842	3.855	3.841	3.898	3.936	3.957	3.996	4.053
10-14	3.384	3.406	3.433	3.454	3.476	3.516	3.555	3.584	3.592	3.613	3.603
15-19	3.073	3.091	3.119	3.145	3.165	3.199	3.233	3.261	3.268	3.298	3.337
20-24	2.638	2.668	2.707	2.736	2.756	2.775	2.803	2.830	2.843	2.872	2.903
25-29	2.921	2.928	2.941	2.965	2.991	3.034	3.082	3.127	3.145	3.175	3.196
30-34	2.826	2.825	2.833	2.837	2.839	2.842	2.857	2.870	2.880	2.912	2.954
35-39	2.700	2.723	2.741	2.756	2.766	2.788	2.800	2.806	2.799	2.805	2.807
40-44	2.298	2.341	2.381	2.410	2.431	2.457	2.487	2.504	2.511	2.527	2.547
45-49	2.116	2.178	2.255	2.336	2.410	2.474	2.530	2.574	2.596	2.627	2.653
50-54	1.577	1.633	1.684	1.731	1.778	1.839	1.903	1.970	2.031	2.102	2.160
55-59	1.229	1.291	1.359	1.424	1.482	1.536	1.599	1.649	1.689	1.741	1.800
60-64	844	902	963	1.028	1.094	1.169	1.235	1.299	1.357	1.418	1.470
65-69	674	698	733	778	828	884	949	1.018	1.081	1.155	1.236
70-74	452	454	455	455	460	469	489	515	546	582	622
75+	569	569	569	572	577	586	590	602	602	612	625
JUMLAH	34.701	35.170	35.701	36.211	36.678	37.229	37.820	38.340	38.662	39.190	39.714

Tabel II.7.3
PROYEKSI PENDUDUK
MENURUT JENIS KELAMIN DAN KELOMPOK UMUR
TAHUN 2010 - 2020

BOLAANG MONGONDOW UTARA

LAKI-LAKI + PEREMPUAN

KELOMPOK UMUR	2010	2011	2012	2013	2014	2015	2016	2017	2018	2019	2020
(1)	(2)	(3)	(4)	(5)	(6)	(7)	(8)	(9)	(10)	(11)	(12)
0-4	7.352	7.423	7.503	7.577	7.644	7.703	7.669	7.640	7.604	7.573	7.554
5-9	7.798	7.859	7.900	7.934	7.939	7.916	7.998	8.083	8.153	8.224	8.297
10-14	7.104	7.163	7.227	7.281	7.347	7.432	7.495	7.531	7.554	7.555	7.542
15-19	6.320	6.348	6.400	6.453	6.508	6.568	6.626	6.685	6.724	6.783	6.867
20-24	5.422	5.487	5.549	5.592	5.611	5.616	5.646	5.692	5.734	5.784	5.843
25-29	5.882	5.953	6.017	6.093	6.175	6.268	6.345	6.413	6.449	6.468	6.477
30-34	5.605	5.605	5.643	5.685	5.735	5.777	5.847	5.906	5.969	6.046	6.140
35-39	5.613	5.658	5.693	5.720	5.732	5.758	5.761	5.797	5.831	5.878	5.925
40-44	4.769	4.859	4.936	4.992	5.035	5.073	5.117	5.147	5.166	5.176	5.203
45-49	4.271	4.404	4.559	4.724	4.871	4.986	5.084	5.164	5.215	5.260	5.304
50-54	3.312	3.426	3.529	3.628	3.732	3.853	3.977	4.115	4.258	4.390	4.499
55-59	2.513	2.651	2.788	2.918	3.035	3.141	3.253	3.351	3.442	3.541	3.659
60-64	1.721	1.841	1.976	2.121	2.266	2.410	2.546	2.677	2.799	2.912	3.017
65-69	1.317	1.378	1.453	1.543	1.648	1.772	1.898	2.040	2.187	2.339	2.493
70-74	865	875	885	898	915	939	986	1.041	1.106	1.183	1.275
75+	1.038	1.052	1.062	1.078	1.097	1.119	1.135	1.155	1.175	1.201	1.234
JUMLAH	70.902	71.982	73.120	74.237	75.290	76.331	77.383	78.437	79.366	80.313	81.329

Tabel II.8.1
 PROYEKSI PENDUDUK
 MENURUT JENIS KELAMIN DAN KELOMPOK UMUR
 TAHUN 2010 - 2020

SIAU TAGULANDANG BIARO

LAKI-LAKI

KELOMPOK UMUR	2010	2011	2012	2013	2014	2015	2016	2017	2018	2019	2020
(1)	(2)	(3)	(4)	(5)	(6)	(7)	(8)	(9)	(10)	(11)	(12)
0-4	2.463	2.446	2.444	2.446	2.428	2.411	2.363	2.329	2.293	2.255	2.221
5-9	2.691	2.674	2.646	2.626	2.577	2.548	2.528	2.529	2.523	2.512	2.493
10-14	2.855	2.838	2.830	2.826	2.810	2.814	2.794	2.766	2.739	2.695	2.662
15-19	2.579	2.547	2.534	2.529	2.511	2.509	2.491	2.486	2.474	2.467	2.469
20-24	2.458	2.450	2.439	2.427	2.384	2.351	2.320	2.310	2.300	2.291	2.285
25-29	2.285	2.297	2.306	2.322	2.324	2.337	2.326	2.316	2.297	2.262	2.228
30-34	2.140	2.108	2.103	2.111	2.109	2.119	2.128	2.137	2.144	2.150	2.160
35-39	2.397	2.378	2.360	2.346	2.308	2.288	2.252	2.248	2.247	2.252	2.259
40-44	2.554	2.562	2.567	2.569	2.545	2.534	2.512	2.496	2.473	2.439	2.418
45-49	2.582	2.625	2.683	2.753	2.789	2.821	2.829	2.835	2.827	2.811	2.797
50-54	2.033	2.068	2.101	2.140	2.166	2.212	2.247	2.299	2.351	2.390	2.414
55-59	1.529	1.593	1.654	1.711	1.749	1.788	1.819	1.851	1.879	1.908	1.948
60-64	1.080	1.138	1.213	1.295	1.364	1.432	1.492	1.551	1.600	1.641	1.678
65-69	745	775	811	853	899	964	1.016	1.083	1.155	1.222	1.282
70-74	580	581	588	597	605	618	645	675	710	752	807
75+	621	623	625	637	641	651	660	665	682	694	709
JUMLAH	31.592	31.703	31.904	32.188	32.209	32.397	32.422	32.576	32.694	32.741	32.830

Tabel II.8.2
 PROYEKSI PENDUDUK
 MENURUT JENIS KELAMIN DAN KELOMPOK UMUR
 TAHUN 2010 - 2020

SIAU TAGULANDANG BIARO

PEREMPUAN

KELOMPOK UMUR	2010	2011	2012	2013	2014	2015	2016	2017	2018	2019	2020
(1)	(2)	(3)	(4)	(5)	(6)	(7)	(8)	(9)	(10)	(11)	(12)
0-4	2.501	2.502	2.496	2.483	2.471	2.467	2.430	2.377	2.339	2.302	2.260
5-9	2.584	2.573	2.562	2.544	2.519	2.472	2.480	2.458	2.452	2.444	2.436
10-14	2.618	2.609	2.597	2.576	2.562	2.555	2.549	2.527	2.512	2.491	2.440
15-19	2.409	2.399	2.390	2.377	2.364	2.351	2.349	2.325	2.314	2.304	2.291
20-24	2.196	2.200	2.204	2.196	2.187	2.169	2.166	2.147	2.139	2.133	2.120
25-29	2.252	2.235	2.218	2.204	2.196	2.197	2.204	2.195	2.190	2.184	2.159
30-34	2.193	2.170	2.150	2.122	2.098	2.068	2.056	2.029	2.019	2.015	2.010
35-39	2.477	2.472	2.459	2.437	2.416	2.400	2.377	2.343	2.319	2.297	2.260
40-44	2.621	2.641	2.654	2.647	2.640	2.626	2.626	2.598	2.580	2.563	2.539
45-49	2.440	2.489	2.544	2.599	2.647	2.678	2.703	2.705	2.706	2.701	2.682
50-54	2.023	2.072	2.113	2.140	2.171	2.211	2.260	2.298	2.354	2.400	2.424
55-59	1.665	1.731	1.799	1.860	1.913	1.954	2.005	2.033	2.065	2.101	2.135
60-64	1.320	1.395	1.472	1.552	1.636	1.719	1.791	1.854	1.922	1.977	2.016
65-69	955	980	1.016	1.064	1.119	1.179	1.249	1.317	1.390	1.466	1.542
70-74	808	805	797	792	790	796	820	849	892	941	992
75+	1.356	1.346	1.346	1.348	1.346	1.343	1.340	1.345	1.338	1.343	1.354
JUMLAH	32.418	32.619	32.817	32.941	33.075	33.185	33.405	33.400	33.531	33.662	33.660

Tabel II.8.3
 PROYEKSI PENDUDUK
 MENURUT JENIS KELAMIN DAN KELOMPOK UMUR
 TAHUN 2010 - 2020

SIAU TAGULANDANG BIARO

LAKI-LAKI + PEREMPUAN

KELOMPOK UMUR	2010	2011	2012	2013	2014	2015	2016	2017	2018	2019	2020
(1)	(2)	(3)	(4)	(5)	(6)	(7)	(8)	(9)	(10)	(11)	(12)
0-4	4.964	4.948	4.940	4.929	4.899	4.878	4.793	4.706	4.632	4.557	4.481
5-9	5.275	5.247	5.208	5.170	5.096	5.020	5.008	4.987	4.975	4.956	4.929
10-14	5.473	5.447	5.427	5.402	5.372	5.369	5.343	5.293	5.251	5.186	5.102
15-19	4.988	4.946	4.924	4.906	4.875	4.860	4.840	4.811	4.788	4.771	4.760
20-24	4.654	4.650	4.643	4.623	4.571	4.520	4.486	4.457	4.439	4.424	4.405
25-29	4.537	4.532	4.524	4.526	4.520	4.534	4.530	4.511	4.487	4.446	4.387
30-34	4.333	4.278	4.253	4.233	4.207	4.187	4.184	4.166	4.163	4.165	4.170
35-39	4.874	4.850	4.819	4.783	4.724	4.688	4.629	4.591	4.566	4.549	4.519
40-44	5.175	5.203	5.221	5.216	5.185	5.160	5.138	5.094	5.053	5.002	4.957
45-49	5.022	5.114	5.227	5.352	5.436	5.499	5.532	5.540	5.533	5.512	5.479
50-54	4.056	4.140	4.214	4.280	4.337	4.423	4.507	4.597	4.705	4.790	4.838
55-59	3.194	3.324	3.453	3.571	3.662	3.742	3.824	3.884	3.944	4.009	4.083
60-64	2.400	2.533	2.685	2.847	3.000	3.151	3.283	3.405	3.522	3.618	3.694
65-69	1.700	1.755	1.827	1.917	2.018	2.143	2.265	2.400	2.545	2.688	2.824
70-74	1.388	1.386	1.385	1.389	1.395	1.414	1.465	1.524	1.602	1.693	1.799
75+	1.977	1.969	1.971	1.985	1.987	1.994	2.000	2.010	2.020	2.037	2.063
JUMLAH	64.010	64.322	64.721	65.129	65.284	65.582	65.827	65.976	66.225	66.403	66.490

Tabel II.9.1
 PROYEKSI PENDUDUK
 MENURUT JENIS KELAMIN DAN KELOMPOK UMUR
 TAHUN 2010 - 2020

MINAHASA TENGGARA

LAKI-LAKI

KELOMPOK UMUR	2010	2011	2012	2013	2014	2015	2016	2017	2018	2019	2020
(1)	(2)	(3)	(4)	(5)	(6)	(7)	(8)	(9)	(10)	(11)	(12)
0-4	5.055	5.049	5.064	5.062	5.067	5.046	4.985	4.915	4.854	4.805	4.729
5-9	5.277	5.272	5.236	5.194	5.136	5.092	5.094	5.098	5.101	5.116	5.070
10-14	4.987	4.986	4.990	4.979	4.988	5.014	5.016	4.971	4.935	4.889	4.822
15-19	4.175	4.145	4.138	4.128	4.131	4.137	4.142	4.136	4.130	4.145	4.144
20-24	3.702	3.711	3.708	3.684	3.649	3.609	3.590	3.576	3.572	3.583	3.570
25-29	3.766	3.809	3.838	3.862	3.894	3.929	3.942	3.929	3.907	3.876	3.811
30-34	3.967	3.929	3.936	3.946	3.974	4.004	4.053	4.071	4.099	4.140	4.154
35-39	4.270	4.261	4.245	4.214	4.178	4.158	4.122	4.120	4.131	4.167	4.175
40-44	4.153	4.191	4.215	4.211	4.208	4.202	4.199	4.174	4.147	4.120	4.079
45-49	3.382	3.456	3.546	3.635	3.712	3.766	3.805	3.817	3.818	3.822	3.798
50-54	2.827	2.893	2.951	3.001	3.061	3.137	3.211	3.287	3.373	3.451	3.482
55-59	2.323	2.434	2.537	2.622	2.701	2.770	2.840	2.892	2.945	3.012	3.069
60-64	1.605	1.700	1.817	1.939	2.060	2.168	2.277	2.368	2.453	2.531	2.584
65-69	1.025	1.075	1.127	1.184	1.259	1.353	1.437	1.534	1.641	1.747	1.832
70-74	731	737	747	759	774	793	836	875	922	984	1.054
75+	858	872	882	896	908	925	941	957	973	998	1.017
JUMLAH	52.103	52.520	52.977	53.316	53.700	54.103	54.490	54.720	55.001	55.386	55.390

Tabel II.9.2
PROYEKSI PENDUDUK
MENURUT JENIS KELAMIN DAN KELOMPOK UMUR
TAHUN 2010 - 2020

MINAHASA TENGGARA

PEREMPUAN

KELOMPOK UMUR	2010	2011	2012	2013	2014	2015	2016	2017	2018	2019	2020
(1)	(2)	(3)	(4)	(5)	(6)	(7)	(8)	(9)	(10)	(11)	(12)
0-4	4.879	4.896	4.904	4.910	4.906	4.923	4.851	4.790	4.732	4.670	4.616
5-9	4.862	4.859	4.862	4.856	4.831	4.765	4.776	4.783	4.790	4.784	4.805
10-14	4.809	4.809	4.809	4.801	4.794	4.802	4.793	4.793	4.785	4.759	4.700
15-19	3.610	3.608	3.610	3.613	3.610	3.611	3.605	3.603	3.597	3.591	3.599
20-24	3.135	3.150	3.172	3.184	3.183	3.173	3.168	3.171	3.174	3.171	3.174
25-29	3.475	3.459	3.445	3.445	3.447	3.462	3.474	3.494	3.502	3.497	3.490
30-34	3.835	3.808	3.788	3.763	3.734	3.698	3.674	3.658	3.655	3.653	3.672
35-39	3.866	3.872	3.869	3.862	3.845	3.836	3.803	3.779	3.754	3.722	3.688
40-44	3.582	3.623	3.657	3.675	3.677	3.678	3.677	3.674	3.667	3.651	3.645
45-49	2.866	2.933	3.012	3.098	3.169	3.222	3.256	3.286	3.302	3.303	3.306
50-54	2.557	2.629	2.690	2.745	2.798	2.862	2.925	3.003	3.087	3.157	3.214
55-59	2.276	2.375	2.479	2.580	2.664	2.734	2.809	2.872	2.931	2.987	3.061
60-64	1.535	1.630	1.728	1.830	1.933	2.045	2.131	2.226	2.313	2.390	2.456
65-69	1.120	1.150	1.200	1.264	1.333	1.412	1.497	1.588	1.682	1.780	1.883
70-74	889	888	883	881	883	893	917	960	1.011	1.070	1.134
75+	1.312	1.307	1.309	1.306	1.311	1.317	1.317	1.314	1.320	1.328	1.346
JUMLAH	48.608	48.996	49.417	49.813	50.118	50.433	50.673	50.994	51.302	51.513	51.789

Tabel II.9.3
PROYEKSI PENDUDUK
MENURUT JENIS KELAMIN DAN KELOMPOK UMUR
TAHUN 2010 - 2020

MINAHASA TENGGARA

LAKI-LAKI + PEREMPUAN

KELOMPOK UMUR	2010	2011	2012	2013	2014	2015	2016	2017	2018	2019	2020
(1)	(2)	(3)	(4)	(5)	(6)	(7)	(8)	(9)	(10)	(11)	(12)
0-4	9.934	9.945	9.968	9.972	9.973	9.969	9.836	9.705	9.586	9.475	9.345
5-9	10.139	10.131	10.098	10.050	9.967	9.857	9.870	9.881	9.891	9.900	9.875
10-14	9.796	9.795	9.799	9.780	9.782	9.816	9.809	9.764	9.720	9.648	9.522
15-19	7.785	7.753	7.748	7.741	7.741	7.748	7.747	7.739	7.727	7.736	7.743
20-24	6.837	6.861	6.880	6.868	6.832	6.782	6.758	6.747	6.746	6.754	6.744
25-29	7.241	7.268	7.283	7.307	7.341	7.391	7.416	7.423	7.409	7.373	7.301
30-34	7.802	7.737	7.724	7.709	7.708	7.702	7.727	7.729	7.754	7.793	7.826
35-39	8.136	8.133	8.114	8.076	8.023	7.994	7.925	7.899	7.885	7.889	7.863
40-44	7.735	7.814	7.872	7.886	7.885	7.880	7.876	7.848	7.814	7.771	7.724
45-49	6.248	6.389	6.558	6.733	6.881	6.988	7.061	7.103	7.120	7.125	7.104
50-54	5.384	5.522	5.641	5.746	5.859	5.999	6.136	6.290	6.460	6.608	6.696
55-59	4.599	4.809	5.016	5.202	5.365	5.504	5.649	5.764	5.876	5.999	6.130
60-64	3.140	3.330	3.545	3.769	3.993	4.213	4.408	4.594	4.766	4.921	5.040
65-69	2.145	2.225	2.327	2.448	2.592	2.765	2.934	3.122	3.323	3.527	3.715
70-74	1.620	1.625	1.630	1.640	1.657	1.686	1.753	1.835	1.933	2.054	2.188
75+	2.170	2.179	2.191	2.202	2.219	2.242	2.258	2.271	2.293	2.326	2.363
JUMLAH	100.711	101.516	102.394	103.129	103.818	104.536	105.163	105.714	106.303	106.899	107.179

Tabel II.10.1
 PROYEKSI PENDUDUK
 MENURUT JENIS KELAMIN DAN KELOMPOK UMUR
 TAHUN 2010 - 2020

BOLAANG MONGONDOW SELATAN

LAKI-LAKI

KELOMPOK UMUR	2010	2011	2012	2013	2014	2015	2016	2017	2018	2019	2020
(1)	(2)	(3)	(4)	(5)	(6)	(7)	(8)	(9)	(10)	(11)	(12)
0-4	3.529	3.580	3.623	3.652	3.708	3.721	3.729	3.734	3.719	3.718	3.723
5-9	3.425	3.476	3.483	3.483	3.495	3.490	3.542	3.603	3.635	3.682	3.711
10-14	3.064	3.113	3.143	3.161	3.213	3.254	3.302	3.326	3.327	3.331	3.341
15-19	2.731	2.755	2.774	2.790	2.834	2.858	2.903	2.944	2.965	3.006	3.057
20-24	2.402	2.446	2.466	2.470	2.482	2.472	2.496	2.526	2.543	2.576	2.613
25-29	2.582	2.653	2.697	2.735	2.800	2.844	2.895	2.931	2.938	2.945	2.946
30-34	2.559	2.574	2.602	2.629	2.687	2.727	2.801	2.858	2.900	2.959	3.021
35-39	2.295	2.326	2.338	2.341	2.355	2.359	2.374	2.410	2.436	2.482	2.531
40-44	1.906	1.954	1.982	1.997	2.024	2.035	2.064	2.085	2.090	2.096	2.111
45-49	1.618	1.680	1.739	1.796	1.862	1.903	1.951	1.988	2.005	2.028	2.048
50-54	1.287	1.336	1.377	1.411	1.461	1.506	1.565	1.628	1.684	1.741	1.787
55-59	952	1.014	1.066	1.110	1.160	1.200	1.246	1.291	1.325	1.369	1.420
60-64	640	689	743	798	861	913	972	1.028	1.072	1.119	1.163
65-69	389	414	438	464	501	542	585	633	683	735	784
70-74	240	246	251	257	267	275	292	311	332	358	390
75+	263	273	280	281	292	300	310	319	329	340	351
JUMLAH	29.882	30.529	31.002	31.375	32.002	32.399	33.027	33.615	33.983	34.485	34.997

Tabel II.10.2
PROYEKSI PENDUDUK
MENURUT JENIS KELAMIN DAN KELOMPOK UMUR
TAHUN 2010 - 2020

BOLAANG MONGONDOW SELATAN

PEREMPUAN

KELOMPOK UMUR	2010	2011	2012	2013	2014	2015	2016	2017	2018	2019	2020
(1)	(2)	(3)	(4)	(5)	(6)	(7)	(8)	(9)	(10)	(11)	(12)
0-4	3.320	3.375	3.420	3.470	3.498	3.572	3.555	3.545	3.557	3.557	3.556
5-9	3.246	3.285	3.325	3.366	3.375	3.391	3.434	3.468	3.527	3.571	3.627
10-14	2.768	2.803	2.836	2.870	2.890	2.947	2.973	2.996	3.044	3.065	3.061
15-19	2.381	2.410	2.441	2.475	2.491	2.541	2.561	2.585	2.620	2.650	2.685
20-24	2.212	2.253	2.292	2.331	2.349	2.385	2.404	2.428	2.469	2.500	2.529
25-29	2.420	2.439	2.458	2.493	2.512	2.574	2.606	2.646	2.694	2.726	2.749
30-34	2.446	2.461	2.474	2.493	2.492	2.515	2.523	2.535	2.574	2.607	2.648
35-39	2.015	2.045	2.066	2.090	2.098	2.135	2.137	2.141	2.162	2.171	2.174
40-44	1.727	1.767	1.806	1.839	1.857	1.891	1.909	1.923	1.949	1.967	1.986
45-49	1.426	1.478	1.535	1.602	1.651	1.709	1.744	1.776	1.813	1.837	1.862
50-54	1.145	1.194	1.234	1.277	1.312	1.369	1.412	1.464	1.529	1.583	1.629
55-59	743	784	828	875	912	953	990	1.020	1.058	1.093	1.131
60-64	584	625	671	722	768	829	872	917	970	1.014	1.053
65-69	348	361	381	406	432	465	497	533	573	615	657
70-74	258	261	263	266	267	274	287	302	323	345	370
75+	259	258	262	270	271	273	276	277	282	285	291
JUMLAH	27.298	27.799	28.292	28.845	29.175	29.823	30.180	30.556	31.144	31.586	32.008

Tabel II.10.3
 PROYEKSI PENDUDUK
 MENURUT JENIS KELAMIN DAN KELOMPOK UMUR
 TAHUN 2010 - 2020

BOLAANG MONGONDOW SELATAN

LAKI-LAKI + PEREMPUAN

KELOMPOK UMUR	2010	2011	2012	2013	2014	2015	2016	2017	2018	2019	2020
(1)	(2)	(3)	(4)	(5)	(6)	(7)	(8)	(9)	(10)	(11)	(12)
0-4	6.849	6.955	7.043	7.122	7.206	7.293	7.284	7.279	7.276	7.275	7.279
5-9	6.671	6.761	6.808	6.849	6.870	6.881	6.976	7.071	7.162	7.253	7.338
10-14	5.832	5.916	5.979	6.031	6.103	6.201	6.275	6.322	6.371	6.396	6.402
15-19	5.112	5.165	5.215	5.265	5.325	5.399	5.464	5.529	5.585	5.656	5.742
20-24	4.614	4.699	4.758	4.801	4.831	4.857	4.900	4.954	5.012	5.076	5.142
25-29	5.002	5.092	5.155	5.228	5.312	5.418	5.501	5.577	5.632	5.671	5.695
30-34	5.005	5.035	5.076	5.122	5.179	5.242	5.324	5.393	5.474	5.566	5.669
35-39	4.310	4.371	4.404	4.431	4.453	4.494	4.511	4.551	4.598	4.653	4.705
40-44	3.633	3.721	3.788	3.836	3.881	3.926	3.973	4.008	4.039	4.063	4.097
45-49	3.044	3.158	3.274	3.398	3.513	3.612	3.695	3.764	3.818	3.865	3.910
50-54	2.432	2.530	2.611	2.688	2.773	2.875	2.977	3.092	3.213	3.324	3.416
55-59	1.695	1.798	1.894	1.985	2.072	2.153	2.236	2.311	2.383	2.462	2.551
60-64	1.224	1.314	1.414	1.520	1.629	1.742	1.844	1.945	2.042	2.133	2.216
65-69	737	775	819	870	933	1.007	1.082	1.166	1.256	1.350	1.441
70-74	498	507	514	523	534	549	579	613	655	703	760
75+	522	531	542	551	563	573	586	596	611	625	642
JUMLAH	57.180	58.328	59.294	60.220	61.177	62.222	63.207	64.171	65.127	66.071	67.005

Tabel II.11.1
PROYEKSI PENDUDUK
MENURUT JENIS KELAMIN DAN KELOMPOK UMUR
TAHUN 2010 - 2020

BOLAANG MONGONDOW TIMUR

LAKI-LAKI

KELOMPOK UMUR	2010	2011	2012	2013	2014	2015	2016	2017	2018	2019	2020
(1)	(2)	(3)	(4)	(5)	(6)	(7)	(8)	(9)	(10)	(11)	(12)
0-4	3.108	3.133	3.161	3.188	3.213	3.224	3.209	3.189	3.181	3.168	3.167
5-9	3.209	3.236	3.233	3.235	3.221	3.218	3.243	3.272	3.307	3.337	3.358
10-14	3.049	3.078	3.097	3.118	3.145	3.185	3.211	3.209	3.216	3.206	3.213
15-19	2.957	2.964	2.976	2.995	3.017	3.044	3.073	3.092	3.118	3.149	3.197
20-24	2.825	2.859	2.872	2.880	2.872	2.860	2.869	2.880	2.905	2.932	2.968
25-29	2.827	2.887	2.925	2.969	3.015	3.064	3.098	3.112	3.126	3.120	3.116
30-34	2.914	2.913	2.935	2.968	3.009	3.054	3.118	3.156	3.209	3.261	3.322
35-39	2.765	2.785	2.791	2.796	2.791	2.798	2.797	2.816	2.852	2.895	2.945
40-44	2.566	2.615	2.644	2.667	2.682	2.698	2.718	2.723	2.732	2.731	2.746
45-49	2.042	2.109	2.174	2.250	2.314	2.363	2.407	2.435	2.459	2.477	2.499
50-54	1.680	1.735	1.780	1.827	1.877	1.935	1.997	2.061	2.136	2.200	2.254
55-59	1.274	1.348	1.413	1.473	1.528	1.580	1.632	1.675	1.721	1.771	1.834
60-64	858	918	987	1.062	1.137	1.204	1.275	1.338	1.396	1.451	1.504
65-69	545	577	607	645	689	747	800	861	928	996	1.059
70-74	381	387	395	406	416	429	455	481	512	551	598
75+	419	431	441	447	459	473	485	496	507	528	541
JUMLAH	33.419	33.975	34.431	34.926	35.385	35.876	36.387	36.796	37.305	37.773	38.321

Tabel II.11.2
 PROYEKSI PENDUDUK
 MENURUT JENIS KELAMIN DAN KELOMPOK UMUR
 TAHUN 2010 - 2020

BOLAANG MONGONDOW TIMUR

PEREMPUAN

KELOMPOK UMUR	2010	2011	2012	2013	2014	2015	2016	2017	2018	2019	2020
(1)	(2)	(3)	(4)	(5)	(6)	(7)	(8)	(9)	(10)	(11)	(12)
0-4	2.961	2.993	3.030	3.052	3.089	3.122	3.115	3.107	3.085	3.080	3.064
5-9	3.002	3.022	3.057	3.070	3.093	3.074	3.119	3.155	3.176	3.209	3.244
10-14	2.865	2.886	2.919	2.930	2.965	2.990	3.023	3.050	3.065	3.082	3.062
15-19	2.647	2.664	2.697	2.713	2.747	2.767	2.797	2.823	2.834	2.860	2.887
20-24	2.481	2.510	2.558	2.579	2.613	2.625	2.651	2.679	2.698	2.725	2.746
25-29	2.564	2.570	2.589	2.603	2.639	2.671	2.713	2.755	2.776	2.804	2.818
30-34	2.705	2.705	2.722	2.719	2.734	2.726	2.738	2.754	2.767	2.797	2.829
35-39	2.523	2.545	2.570	2.579	2.603	2.616	2.625	2.634	2.631	2.640	2.634
40-44	2.251	2.292	2.341	2.363	2.398	2.415	2.445	2.466	2.475	2.492	2.505
45-49	1.791	1.843	1.918	1.980	2.052	2.102	2.152	2.191	2.214	2.241	2.257
50-54	1.504	1.557	1.612	1.653	1.706	1.760	1.822	1.888	1.953	2.018	2.067
55-59	1.050	1.102	1.165	1.219	1.276	1.317	1.370	1.417	1.455	1.500	1.547
60-64	703	751	803	855	916	977	1.029	1.085	1.138	1.189	1.229
65-69	558	577	610	644	691	735	788	843	901	962	1.027
70-74	362	362	364	363	369	375	390	410	435	464	496
75+	527	530	536	542	548	544	552	557	569	572	584
JUMLAH	30.494	30.909	31.491	31.864	32.439	32.816	33.329	33.814	34.172	34.635	34.996

Tabel II.11.3
PROYEKSI PENDUDUK
MENURUT JENIS KELAMIN DAN KELOMPOK UMUR
TAHUN 2010 - 2020

BOLAANG MONGONDOW TIMUR

LAKI-LAKI + PEREMPUAN

KELOMPOK UMUR	2010	2011	2012	2013	2014	2015	2016	2017	2018	2019	2020
(1)	(2)	(3)	(4)	(5)	(6)	(7)	(8)	(9)	(10)	(11)	(12)
0-4	6.069	6.126	6.191	6.240	6.302	6.346	6.324	6.296	6.266	6.248	6.231
5-9	6.211	6.258	6.290	6.305	6.314	6.292	6.362	6.427	6.483	6.546	6.602
10-14	5.914	5.964	6.016	6.048	6.110	6.175	6.234	6.259	6.281	6.288	6.275
15-19	5.604	5.628	5.673	5.708	5.764	5.811	5.870	5.915	5.952	6.009	6.084
20-24	5.306	5.369	5.430	5.459	5.485	5.485	5.520	5.559	5.603	5.657	5.714
25-29	5.391	5.457	5.514	5.572	5.654	5.735	5.811	5.867	5.902	5.924	5.934
30-34	5.619	5.618	5.657	5.687	5.743	5.780	5.856	5.910	5.976	6.058	6.151
35-39	5.288	5.330	5.361	5.375	5.394	5.414	5.422	5.450	5.483	5.535	5.579
40-44	4.817	4.907	4.985	5.030	5.080	5.113	5.163	5.189	5.207	5.223	5.251
45-49	3.833	3.952	4.092	4.230	4.366	4.465	4.559	4.626	4.673	4.718	4.756
50-54	3.184	3.292	3.392	3.480	3.583	3.695	3.819	3.949	4.089	4.218	4.321
55-59	2.324	2.450	2.578	2.692	2.804	2.897	3.002	3.092	3.176	3.271	3.381
60-64	1.561	1.669	1.790	1.917	2.053	2.181	2.304	2.423	2.534	2.640	2.733
65-69	1.103	1.154	1.217	1.289	1.380	1.482	1.588	1.704	1.829	1.958	2.086
70-74	743	749	759	769	785	804	845	891	947	1.015	1.094
75+	946	961	977	989	1.007	1.017	1.037	1.053	1.076	1.100	1.125
JUMLAH	63.913	64.884	65.922	66.790	67.824	68.692	69.716	70.610	71.477	72.408	73.317

Tabel II.12.1
PROYEKSI PENDUDUK
MENURUT JENIS KELAMIN DAN KELOMPOK UMUR
TAHUN 2010 - 2020

KOTA MANADO

LAKI-LAKI

KELOMPOK UMUR	2010	2011	2012	2013	2014	2015	2016	2017	2018	2019	2020
(1)	(2)	(3)	(4)	(5)	(6)	(7)	(8)	(9)	(10)	(11)	(12)
0-4	17.859	17.834	17.889	17.903	17.938	17.840	17.609	17.395	17.187	16.962	16.773
5-9	17.476	17.456	17.346	17.219	17.049	16.876	16.870	16.915	16.937	16.935	16.863
10-14	17.010	17.001	17.020	17.000	17.048	17.114	17.106	16.987	16.870	16.669	16.514
15-19	19.362	19.228	19.194	19.175	19.203	19.206	19.214	19.220	19.202	19.214	19.304
20-24	23.648	23.705	23.689	23.568	23.365	23.069	22.935	22.893	22.881	22.875	22.905
25-29	19.653	19.882	20.032	20.180	20.373	20.524	20.577	20.545	20.436	20.212	19.971
30-34	16.586	16.428	16.460	16.515	16.649	16.748	16.941	17.057	17.179	17.296	17.432
35-39	15.651	15.622	15.568	15.472	15.358	15.259	15.115	15.132	15.189	15.271	15.374
40-44	14.880	15.017	15.100	15.109	15.112	15.071	15.049	14.986	14.902	14.757	14.674
45-49	13.074	13.361	13.715	14.074	14.388	14.572	14.717	14.792	14.806	14.770	14.749
50-54	10.934	11.188	11.419	11.626	11.872	12.141	12.422	12.744	13.082	13.346	13.534
55-59	8.254	8.651	9.020	9.336	9.621	9.856	10.096	10.305	10.501	10.701	10.961
60-64	5.146	5.457	5.832	6.234	6.626	6.966	7.312	7.618	7.892	8.119	8.330
65-69	3.131	3.285	3.442	3.624	3.855	4.136	4.391	4.699	5.026	5.337	5.623
70-74	2.057	2.077	2.102	2.141	2.185	2.234	2.350	2.471	2.605	2.770	2.982
75+	1.863	1.863	1.919	1.936	1.961	2.001	2.030	2.073	2.127	2.162	2.217
JUMLAH	206.584	208.055	209.747	211.112	212.603	213.613	214.734	215.832	216.822	217.396	218.206

Tabel II.12.2
 PROYEKSI PENDUDUK
 MENURUT JENIS KELAMIN DAN KELOMPOK UMUR
 TAHUN 2010 - 2020

KOTA MANADO

PEREMPUAN

KELOMPOK UMUR	2010	2011	2012	2013	2014	2015	2016	2017	2018	2019	2020
(1)	(2)	(3)	(4)	(5)	(6)	(7)	(8)	(9)	(10)	(11)	(12)
0-4	17.139	17.215	17.209	17.218	17.219	17.293	17.060	16.843	16.613	16.430	16.234
5-9	16.382	16.388	16.356	16.328	16.251	16.051	16.107	16.126	16.117	16.136	16.194
10-14	16.526	16.541	16.502	16.466	16.461	16.501	16.494	16.483	16.435	16.369	16.162
15-19	19.689	19.684	19.654	19.644	19.653	19.673	19.673	19.659	19.592	19.598	19.635
20-24	22.104	22.235	22.331	22.375	22.382	22.333	22.323	22.329	22.303	22.330	22.348
25-29	18.151	18.077	17.967	17.951	17.974	18.076	18.158	18.256	18.273	18.290	18.242
30-34	16.292	16.188	16.069	15.960	15.853	15.723	15.639	15.559	15.524	15.554	15.633
35-39	15.674	15.702	15.652	15.609	15.554	15.529	15.416	15.324	15.199	15.113	14.980
40-44	15.068	15.259	15.367	15.422	15.445	15.456	15.471	15.450	15.388	15.346	15.315
45-49	13.252	13.577	13.903	14.285	14.625	14.882	15.047	15.181	15.219	15.265	15.265
50-54	10.688	11.002	11.229	11.447	11.678	11.965	12.242	12.560	12.892	13.212	13.434
55-59	8.344	8.718	9.077	9.438	9.759	10.020	10.307	10.536	10.728	10.962	11.225
60-64	5.436	5.766	6.103	6.457	6.838	7.235	7.548	7.878	8.182	8.470	8.694
65-69	3.699	3.803	3.964	4.165	4.406	4.672	4.961	5.261	5.570	5.900	6.242
70-74	2.885	2.881	2.870	2.860	2.873	2.913	3.002	3.137	3.302	3.502	3.714
75+	3.655	3.688	3.640	3.664	3.683	3.699	3.724	3.719	3.721	3.762	3.811
JUMLAH	204.984	206.724	207.893	209.289	210.654	212.021	213.172	214.301	215.058	216.239	217.128

Tabel II.12.3
 PROYEKSI PENDUDUK
 MENURUT JENIS KELAMIN DAN KELOMPOK UMUR
 TAHUN 2010 - 2020

KOTA MANADO

LAKI-LAKI + PEREMPUAN

KELOMPOK UMUR	2010	2011	2012	2013	2014	2015	2016	2017	2018	2019	2020
(1)	(2)	(3)	(4)	(5)	(6)	(7)	(8)	(9)	(10)	(11)	(12)
0-4	34.998	35.049	35.098	35.121	35.157	35.133	34.669	34.238	33.800	33.392	33.007
5-9	33.858	33.844	33.702	33.547	33.300	32.927	32.977	33.041	33.054	33.071	33.057
10-14	33.536	33.542	33.522	33.466	33.509	33.615	33.600	33.470	33.305	33.038	32.676
15-19	39.051	38.912	38.848	38.819	38.856	38.879	38.887	38.879	38.794	38.812	38.939
20-24	45.752	45.940	46.020	45.943	45.747	45.402	45.258	45.222	45.184	45.205	45.253
25-29	37.804	37.959	37.999	38.131	38.347	38.600	38.735	38.801	38.709	38.502	38.213
30-34	32.878	32.616	32.529	32.475	32.502	32.471	32.580	32.616	32.703	32.850	33.065
35-39	31.325	31.324	31.220	31.081	30.912	30.788	30.531	30.456	30.388	30.384	30.354
40-44	29.948	30.276	30.467	30.531	30.557	30.527	30.520	30.436	30.290	30.103	29.989
45-49	26.326	26.938	27.618	28.359	29.013	29.454	29.764	29.973	30.025	30.035	30.014
50-54	21.622	22.190	22.648	23.073	23.550	24.106	24.664	25.304	25.974	26.558	26.968
55-59	16.598	17.369	18.097	18.774	19.380	19.876	20.403	20.841	21.229	21.663	22.186
60-64	10.582	11.223	11.935	12.691	13.464	14.201	14.860	15.496	16.074	16.589	17.024
65-69	6.830	7.088	7.406	7.789	8.261	8.808	9.352	9.960	10.596	11.237	11.865
70-74	4.942	4.958	4.972	5.001	5.058	5.147	5.352	5.608	5.907	6.272	6.696
75+	5.518	5.551	5.559	5.600	5.644	5.700	5.754	5.792	5.848	5.924	6.028
JUMLAH	411.568	414.779	417.640	420.401	423.257	425.634	427.906	430.133	431.880	433.635	435.334

Tabel II.13.1
PROYEKSI PENDUDUK
MENURUT JENIS KELAMIN DAN KELOMPOK UMUR
TAHUN 2010 - 2020

KOTA BITUNG

LAKI-LAKI

KELOMPOK UMUR	2010	2011	2012	2013	2014	2015	2016	2017	2018	2019	2020
(1)	(2)	(3)	(4)	(5)	(6)	(7)	(8)	(9)	(10)	(11)	(12)
0-4	9.874	9.984	10.118	10.250	10.383	10.468	10.459	10.448	10.441	10.458	10.461
5-9	9.450	9.556	9.593	9.641	9.650	9.685	9.799	9.938	10.061	10.209	10.283
10-14	8.392	8.494	8.590	8.684	8.807	8.960	9.068	9.106	9.146	9.168	9.190
15-19	8.728	8.774	8.849	8.947	9.061	9.187	9.305	9.412	9.510	9.655	9.812
20-24	9.571	9.714	9.806	9.875	9.900	9.909	9.971	10.065	10.174	10.321	10.453
25-29	8.921	9.136	9.300	9.483	9.679	9.885	10.032	10.129	10.191	10.228	10.222
30-34	8.278	8.299	8.402	8.534	8.700	8.871	9.084	9.248	9.419	9.624	9.812
35-39	7.775	7.855	7.908	7.957	7.985	8.043	8.067	8.167	8.286	8.456	8.610
40-44	6.958	7.109	7.223	7.314	7.397	7.478	7.556	7.613	7.654	7.691	7.737
45-49	5.608	5.803	6.015	6.248	6.460	6.633	6.779	6.892	6.976	7.063	7.132
50-54	4.517	4.678	4.823	4.970	5.132	5.322	5.510	5.716	5.935	6.143	6.301
55-59	3.305	3.507	3.692	3.868	4.032	4.188	4.342	4.481	4.616	4.775	4.947
60-64	2.132	2.286	2.468	2.670	2.870	3.059	3.251	3.425	3.587	3.745	3.888
65-69	1.169	1.239	1.313	1.398	1.503	1.636	1.759	1.902	2.059	2.217	2.362
70-74	806	822	842	866	895	928	988	1.050	1.119	1.207	1.316
75+	731	752	773	790	816	842	861	889	915	949	983
JUMLAH	96.215	98.008	99.715	101.495	103.270	105.094	106.831	108.481	110.089	111.909	113.509

Tabel II.13.2
 PROYEKSI PENDUDUK
 MENURUT JENIS KELAMIN DAN KELOMPOK UMUR
 TAHUN 2010 - 2020

KOTA BITUNG

PEREMPUAN

KELOMPOK UMUR	2010	2011	2012	2013	2014	2015	2016	2017	2018	2019	2020
(1)	(2)	(3)	(4)	(5)	(6)	(7)	(8)	(9)	(10)	(11)	(12)
0-4	9.348	9.495	9.622	9.747	9.859	10.014	9.991	9.993	9.992	9.975	9.978
5-9	8.823	8.928	9.035	9.129	9.193	9.180	9.317	9.448	9.578	9.679	9.833
10-14	8.196	8.295	8.392	8.479	8.571	8.690	8.782	8.893	8.988	9.041	9.033
15-19	7.830	7.920	8.021	8.117	8.211	8.311	8.404	8.508	8.597	8.681	8.803
20-24	7.945	8.082	8.237	8.359	8.461	8.541	8.637	8.754	8.867	8.963	9.081
25-29	8.374	8.434	8.503	8.601	8.712	8.860	9.000	9.170	9.303	9.399	9.487
30-34	8.312	8.353	8.406	8.453	8.492	8.518	8.572	8.642	8.744	8.845	8.995
35-39	7.738	7.841	7.925	7.999	8.063	8.139	8.172	8.229	8.278	8.309	8.338
40-44	6.750	6.910	7.057	7.171	7.263	7.350	7.447	7.527	7.602	7.659	7.737
45-49	5.303	5.491	5.707	5.935	6.145	6.323	6.470	6.611	6.719	6.804	6.889
50-54	4.279	4.454	4.611	4.757	4.910	5.084	5.263	5.470	5.691	5.891	6.064
55-59	3.286	3.469	3.664	3.857	4.032	4.187	4.354	4.512	4.659	4.805	4.982
60-64	2.133	2.290	2.459	2.634	2.820	3.016	3.183	3.366	3.544	3.704	3.846
65-69	1.299	1.353	1.427	1.519	1.626	1.742	1.869	2.009	2.153	2.307	2.471
70-74	1.078	1.089	1.098	1.108	1.124	1.152	1.202	1.272	1.357	1.454	1.558
75+	1.381	1.394	1.412	1.434	1.452	1.474	1.501	1.524	1.550	1.579	1.618
JUMLAH	92.075	93.798	95.576	97.299	98.934	100.581	102.164	103.928	105.622	107.095	108.713

Tabel II.13.3
 PROYEKSI PENDUDUK
 MENURUT JENIS KELAMIN DAN KELOMPOK UMUR
 TAHUN 2010 - 2020

KOTA BITUNG

LAKI-LAKI + PEREMPUAN

KELOMPOK UMUR	2010	2011	2012	2013	2014	2015	2016	2017	2018	2019	2020
(1)	(2)	(3)	(4)	(5)	(6)	(7)	(8)	(9)	(10)	(11)	(12)
0-4	19.222	19.479	19.740	19.997	20.242	20.482	20.450	20.441	20.433	20.433	20.439
5-9	18.273	18.484	18.628	18.770	18.843	18.865	19.116	19.386	19.639	19.888	20.116
10-14	16.588	16.789	16.982	17.163	17.378	17.650	17.850	17.999	18.134	18.209	18.223
15-19	16.558	16.694	16.870	17.064	17.272	17.498	17.709	17.920	18.107	18.336	18.615
20-24	17.516	17.796	18.043	18.234	18.361	18.450	18.608	18.819	19.041	19.284	19.534
25-29	17.295	17.570	17.803	18.084	18.391	18.745	19.032	19.299	19.494	19.627	19.709
30-34	16.590	16.652	16.808	16.987	17.192	17.389	17.656	17.890	18.163	18.469	18.807
35-39	15.513	15.696	15.833	15.956	16.048	16.182	16.239	16.396	16.564	16.765	16.948
40-44	13.708	14.019	14.280	14.485	14.660	14.828	15.003	15.140	15.256	15.350	15.474
45-49	10.911	11.294	11.722	12.183	12.605	12.956	13.249	13.503	13.695	13.867	14.021
50-54	8.796	9.132	9.434	9.727	10.042	10.406	10.773	11.186	11.626	12.034	12.365
55-59	6.591	6.976	7.356	7.725	8.064	8.375	8.696	8.993	9.275	9.580	9.929
60-64	4.265	4.576	4.927	5.304	5.690	6.075	6.434	6.791	7.131	7.449	7.734
65-69	2.468	2.592	2.740	2.917	3.129	3.378	3.628	3.911	4.212	4.524	4.833
70-74	1.884	1.911	1.940	1.974	2.019	2.080	2.190	2.322	2.476	2.661	2.874
75+	2.112	2.146	2.185	2.224	2.268	2.316	2.362	2.413	2.465	2.528	2.601
JUMLAH	188.290	191.806	195.291	198.794	202.204	205.675	208.995	212.409	215.711	219.004	222.222

Tabel II.14.1
 PROYEKSI PENDUDUK
 MENURUT JENIS KELAMIN DAN KELOMPOK UMUR
 TAHUN 2010 - 2020

KOTA TOMOHON

LAKI-LAKI

KELOMPOK UMUR	2010	2011	2012	2013	2014	2015	2016	2017	2018	2019	2020
(1)	(2)	(3)	(4)	(5)	(6)	(7)	(8)	(9)	(10)	(11)	(12)
0-4	3.748	3.786	3.841	3.870	3.911	3.934	3.917	3.911	3.888	3.878	3.873
5-9	3.922	3.962	3.981	3.980	3.975	3.979	4.013	4.066	4.099	4.139	4.164
10-14	4.051	4.097	4.146	4.170	4.220	4.283	4.319	4.334	4.332	4.323	4.327
15-19	4.338	4.356	4.400	4.424	4.471	4.523	4.563	4.614	4.639	4.688	4.758
20-24	4.186	4.244	4.289	4.296	4.297	4.291	4.303	4.340	4.366	4.410	4.460
25-29	3.435	3.513	3.581	3.632	3.699	3.768	3.811	3.846	3.850	3.848	3.840
30-34	3.431	3.436	3.482	3.519	3.578	3.640	3.715	3.779	3.832	3.896	3.968
35-39	3.612	3.644	3.673	3.676	3.681	3.698	3.696	3.740	3.776	3.837	3.901
40-44	3.477	3.547	3.609	3.635	3.667	3.700	3.726	3.751	3.753	3.754	3.771
45-49	2.991	3.091	3.208	3.315	3.419	3.502	3.567	3.624	3.650	3.679	3.710
50-54	2.709	2.803	2.893	2.965	3.055	3.160	3.260	3.380	3.492	3.599	3.686
55-59	2.155	2.285	2.408	2.508	2.609	2.703	2.794	2.881	2.954	3.041	3.147
60-64	1.515	1.624	1.755	1.888	2.025	2.153	2.279	2.401	2.503	2.602	2.696
65-69	1.083	1.147	1.217	1.289	1.383	1.502	1.609	1.740	1.873	2.008	2.136
70-74	808	822	843	863	890	920	976	1.037	1.100	1.183	1.286
75+	726	745	758	781	799	820	838	870	893	921	952
JUMLAH	46.187	47.102	48.084	48.811	49.679	50.576	51.386	52.314	53.000	53.806	54.675

Tabel II.14.2
 PROYEKSI PENDUDUK
 MENURUT JENIS KELAMIN DAN KELOMPOK UMUR
 TAHUN 2010 - 2020

KOTA TOMOHON

PEREMPUAN

KELOMPOK UMUR	2010	2011	2012	2013	2014	2015	2016	2017	2018	2019	2020
(1)	(2)	(3)	(4)	(5)	(6)	(7)	(8)	(9)	(10)	(11)	(12)
0-4	3.440	3.481	3.514	3.553	3.589	3.635	3.619	3.605	3.600	3.587	3.570
5-9	3.659	3.688	3.717	3.750	3.769	3.753	3.801	3.840	3.884	3.921	3.962
10-14	3.727	3.754	3.786	3.817	3.852	3.894	3.926	3.960	3.998	4.016	3.992
15-19	4.319	4.350	4.386	4.431	4.475	4.516	4.558	4.594	4.636	4.676	4.718
20-24	4.389	4.447	4.512	4.565	4.608	4.635	4.673	4.717	4.769	4.812	4.852
25-29	3.290	3.303	3.317	3.349	3.387	3.434	3.481	3.531	3.578	3.607	3.623
30-34	3.216	3.219	3.227	3.236	3.246	3.244	3.254	3.267	3.297	3.332	3.369
35-39	3.529	3.564	3.588	3.614	3.637	3.664	3.668	3.678	3.694	3.702	3.695
40-44	3.403	3.473	3.530	3.580	3.623	3.653	3.692	3.720	3.750	3.771	3.791
45-49	2.851	2.942	3.046	3.161	3.268	3.353	3.424	3.483	3.536	3.575	3.602
50-54	2.551	2.645	2.726	2.808	2.893	2.988	3.086	3.195	3.319	3.429	3.513
55-59	2.110	2.219	2.336	2.455	2.561	2.651	2.751	2.839	2.927	3.015	3.109
60-64	1.590	1.700	1.818	1.945	2.076	2.216	2.333	2.456	2.583	2.694	2.786
65-69	1.146	1.188	1.248	1.327	1.417	1.512	1.618	1.731	1.853	1.983	2.113
70-74	985	993	996	1.003	1.015	1.037	1.077	1.135	1.209	1.290	1.378
75+	1.521	1.529	1.557	1.568	1.591	1.612	1.634	1.646	1.673	1.701	1.741
JUMLAH	45.726	46.495	47.304	48.162	49.007	49.797	50.595	51.397	52.306	53.111	53.814

Tabel II.14.3
 PROYEKSI PENDUDUK
 MENURUT JENIS KELAMIN DAN KELOMPOK UMUR
 TAHUN 2010 - 2020

KOTA TOMOHON

LAKI-LAKI + PEREMPUAN

KELOMPOK UMUR	2010	2011	2012	2013	2014	2015	2016	2017	2018	2019	2020
(1)	(2)	(3)	(4)	(5)	(6)	(7)	(8)	(9)	(10)	(11)	(12)
0-4	7.188	7.267	7.355	7.423	7.500	7.569	7.536	7.516	7.488	7.465	7.443
5-9	7.581	7.650	7.698	7.730	7.744	7.732	7.814	7.906	7.983	8.060	8.126
10-14	7.778	7.851	7.932	7.987	8.072	8.177	8.245	8.294	8.330	8.339	8.319
15-19	8.657	8.706	8.786	8.855	8.946	9.039	9.121	9.208	9.275	9.364	9.476
20-24	8.575	8.691	8.801	8.861	8.905	8.926	8.976	9.057	9.135	9.222	9.312
25-29	6.725	6.816	6.898	6.981	7.086	7.202	7.292	7.377	7.428	7.455	7.463
30-34	6.647	6.655	6.709	6.755	6.824	6.884	6.969	7.046	7.129	7.228	7.337
35-39	7.141	7.208	7.261	7.290	7.318	7.362	7.364	7.418	7.470	7.539	7.596
40-44	6.880	7.020	7.139	7.215	7.290	7.353	7.418	7.471	7.503	7.525	7.562
45-49	5.842	6.033	6.254	6.476	6.687	6.855	6.991	7.107	7.186	7.254	7.312
50-54	5.260	5.448	5.619	5.773	5.948	6.148	6.346	6.575	6.811	7.028	7.199
55-59	4.265	4.504	4.744	4.963	5.170	5.354	5.545	5.720	5.881	6.056	6.256
60-64	3.105	3.324	3.573	3.833	4.101	4.369	4.612	4.857	5.086	5.296	5.482
65-69	2.229	2.335	2.465	2.616	2.800	3.014	3.227	3.471	3.726	3.991	4.249
70-74	1.793	1.815	1.839	1.866	1.905	1.957	2.053	2.172	2.309	2.473	2.664
75+	2.247	2.274	2.315	2.349	2.390	2.432	2.472	2.516	2.566	2.622	2.693
JUMLAH	91.913	93.597	95.388	96.973	98.686	100.373	101.981	103.711	105.306	106.917	108.489

Tabel II.15.1
PROYEKSI PENDUDUK
MENURUT JENIS KELAMIN DAN KELOMPOK UMUR
TAHUN 2010 - 2020

KOTA KOTAMOBAGU

LAKI-LAKI

KELOMPOK UMUR	2010	2011	2012	2013	2014	2015	2016	2017	2018	2019	2020
(1)	(2)	(3)	(4)	(5)	(6)	(7)	(8)	(9)	(10)	(11)	(12)
0-4	5.076	5.136	5.213	5.298	5.359	5.422	5.442	5.432	5.446	5.452	5.464
5-9	5.068	5.129	5.156	5.199	5.198	5.233	5.317	5.388	5.475	5.552	5.605
10-14	4.953	5.017	5.080	5.154	5.219	5.329	5.416	5.435	5.478	5.486	5.511
15-19	5.286	5.319	5.371	5.449	5.511	5.607	5.702	5.765	5.845	5.930	6.039
20-24	4.750	4.824	4.877	4.927	4.933	4.954	5.006	5.050	5.122	5.194	5.271
25-29	5.052	5.178	5.279	5.400	5.504	5.640	5.749	5.800	5.856	5.873	5.883
30-34	4.543	4.558	4.621	4.708	4.793	4.905	5.043	5.131	5.245	5.356	5.471
35-39	4.402	4.450	4.487	4.529	4.539	4.587	4.620	4.674	4.759	4.854	4.953
40-44	4.126	4.217	4.292	4.360	4.404	4.467	4.533	4.563	4.604	4.624	4.661
45-49	3.552	3.678	3.818	3.979	4.108	4.233	4.344	4.413	4.482	4.536	4.591
50-54	2.817	2.920	3.014	3.117	3.213	3.344	3.475	3.605	3.756	3.884	3.993
55-59	2.044	2.170	2.288	2.405	2.503	2.609	2.716	2.800	2.895	2.994	3.107
60-64	1.355	1.454	1.573	1.707	1.833	1.960	2.090	2.201	2.312	2.415	2.511
65-69	846	899	954	1.019	1.094	1.195	1.290	1.393	1.514	1.630	1.739
70-74	529	539	554	572	591	613	656	696	745	804	877
75+	595	614	628	651	670	694	711	729	757	786	817
JUMLAH	54.994	56.102	57.205	58.474	59.472	60.792	62.110	63.075	64.291	65.370	66.493

Tabel II.15.2
PROYEKSI PENDUDUK
MENURUT JENIS KELAMIN DAN KELOMPOK UMUR
TAHUN 2010 - 2020

KOTA KOTAMOBAGU

PEREMPUAN

KELOMPOK UMUR	2010	2011	2012	2013	2014	2015	2016	2017	2018	2019	2020
(1)	(2)	(3)	(4)	(5)	(6)	(7)	(8)	(9)	(10)	(11)	(12)
0-4	4.850	4.942	5.012	5.086	5.170	5.259	5.247	5.261	5.269	5.279	5.296
5-9	4.849	4.922	4.984	5.046	5.103	5.106	5.183	5.269	5.348	5.425	5.525
10-14	4.661	4.734	4.793	4.850	4.926	5.002	5.055	5.133	5.196	5.247	5.256
15-19	5.418	5.496	5.568	5.645	5.737	5.818	5.884	5.970	6.041	6.125	6.230
20-24	4.369	4.460	4.545	4.621	4.696	4.748	4.800	4.875	4.945	5.017	5.097
25-29	4.706	4.755	4.796	4.861	4.949	5.041	5.120	5.228	5.312	5.389	5.453
30-34	4.446	4.483	4.514	4.549	4.591	4.611	4.640	4.689	4.749	4.822	4.920
35-39	4.222	4.292	4.340	4.391	4.448	4.499	4.517	4.558	4.591	4.623	4.651
40-44	4.011	4.122	4.209	4.286	4.361	4.422	4.480	4.540	4.592	4.641	4.703
45-49	3.328	3.458	3.597	3.747	3.898	4.018	4.111	4.211	4.288	4.357	4.424
50-54	2.570	2.685	2.781	2.874	2.982	3.093	3.202	3.335	3.475	3.610	3.728
55-59	1.829	1.938	2.049	2.160	2.270	2.361	2.457	2.553	2.640	2.731	2.842
60-64	1.345	1.448	1.554	1.668	1.793	1.923	2.030	2.152	2.272	2.380	2.479
65-69	883	920	972	1.036	1.113	1.194	1.281	1.381	1.483	1.592	1.712
70-74	626	635	639	646	656	674	701	745	796	854	920
75+	812	820	836	839	854	866	881	897	910	925	949
JUMLAH	52.925	54.110	55.189	56.305	57.547	58.635	59.589	60.797	61.907	63.017	64.185

Tabel II.15.3
 PROYEKSI PENDUDUK
 MENURUT JENIS KELAMIN DAN KELOMPOK UMUR
 TAHUN 2010 - 2020

KOTA KOTAMOBAGU

LAKI-LAKI + PEREMPUAN

KELOMPOK UMUR	2010	2011	2012	2013	2014	2015	2016	2017	2018	2019	2020
(1)	(2)	(3)	(4)	(5)	(6)	(7)	(8)	(9)	(10)	(11)	(12)
0-4	9.926	10.078	10.225	10.384	10.529	10.681	10.689	10.693	10.715	10.731	10.760
5-9	9.917	10.051	10.140	10.245	10.301	10.339	10.500	10.657	10.823	10.977	11.130
10-14	9.614	9.751	9.873	10.004	10.145	10.331	10.471	10.568	10.674	10.733	10.767
15-19	10.704	10.815	10.939	11.094	11.248	11.425	11.586	11.735	11.886	12.055	12.269
20-24	9.119	9.284	9.422	9.548	9.629	9.702	9.806	9.925	10.067	10.211	10.368
25-29	9.758	9.933	10.075	10.261	10.453	10.681	10.869	11.028	11.168	11.262	11.336
30-34	8.989	9.041	9.135	9.257	9.384	9.516	9.683	9.820	9.994	10.178	10.391
35-39	8.624	8.742	8.827	8.920	8.987	9.086	9.137	9.232	9.350	9.477	9.604
40-44	8.137	8.339	8.501	8.646	8.765	8.889	9.013	9.103	9.196	9.265	9.364
45-49	6.880	7.136	7.415	7.726	8.006	8.251	8.455	8.624	8.770	8.893	9.015
50-54	5.387	5.605	5.795	5.991	6.195	6.437	6.677	6.940	7.231	7.494	7.721
55-59	3.873	4.108	4.337	4.565	4.773	4.970	5.173	5.353	5.535	5.725	5.949
60-64	2.700	2.902	3.127	3.375	3.626	3.883	4.120	4.353	4.584	4.795	4.990
65-69	1.729	1.819	1.926	2.055	2.207	2.389	2.571	2.774	2.997	3.222	3.451
70-74	1.155	1.174	1.193	1.218	1.247	1.287	1.357	1.441	1.541	1.658	1.797
75+	1.407	1.434	1.464	1.490	1.524	1.560	1.592	1.626	1.667	1.711	1.766
JUMLAH	107.919	110.212	112.394	114.779	117.019	119.427	121.699	123.872	126.198	128.387	130.678

DATA

MENCERDASKAN BANGSA

<http://www.bps.go.id>



BADAN PUSAT STATISTIK

Jl. Dr. Sutomo 6-8 Jakarta 10710

Tel. : (021) 3841195, 3842508, 3810291-4 Fax. : (021) 3857046

Homepage : <http://www.bps.go.id> E-mail : bpsHQ@bps.go.id