

Skin Cancer Detection using Classification Framework of Neural Network

Sultana Bano, Anugrah Srivastava

Abstract— Skin cancers are the most standard form of cancers found in humans. The unending bring of this cancer up in the around the world, the high restorative cost and demise rate have organized the early analysis of cancer. The different parts in finding of skin cancer include: a naturally skin cancer classification framework is created and the relationship of skin cancer picture utilizing diverse kind of neural network are contemplated with different sorts of preprocessing. The dataset images are feed into the system, and across different image processing procedure to enhance the image properties. Statistical region merging (SRM) algorithm is based on region growing and merging. At that point the typical skin is expelled from the skin influenced district lastly cancer cell is left in the picture. Helpful data can be removed from these pictures and go to the classification framework for preparing and testing. Two neural networks are used as classifier, Back-propagation neural network (BNN) and Auto-associative neural network (AANN). Recognition accuracy of the 3- layers back-propagation neural network classifier is 91 % and auto-associative neural network is 82.6 % in the image database that include dermoscopy photo and digital photo. The analysis of work is totally based on MATLAB software.

Index Terms— Skin Cancer, Neural Network, Image Detection, Image Processing, Statistical region merging (SRM)

I. INTRODUCTION

Cancer is one of the most noteworthy dangers to human and is the second driving reason for death the whole world human [1]. According to the analytical data from WHO (World Health Organization) [2], cancer caused about 7.6 million people death worldwide in 2008, and it is predicted that the number of deaths caused by cancer is being increased and the number will possibly increase to 13.1 million in 2030 [2]. Based on related research, cancer will become the leading death in next 20 years [3]. There are three types of skin cancer: Basal cell cancer and squamous cell cancer are called non-melanoma skin cancer while melanoma is on melanocytes cells, Basal cell cancer and squamous cell cancer are common but not so much dangerous. Melanoma is not common as non-melanoma skin cancers, however, it is more likely to spread and become fatal [4]. Although skin cancer is a threat to human life, fortunately even melanoma can be cured if it is detected early. According to research, the curable rate will be more than 90% high if cancer can be diagnosed in its early stages while the curable rate will be less than 50% in its late stage [5]. Thus, the detection of skin cancer in its early stage has attracted the attention from different fields [6]. With respect to the raises in statistical foundation of skin cancer, the importance of its early detection has been considered as a

vital issue and the computer based diagnosis is an important tool for this purpose.

Currently the diagnosis of skin cancer is done mainly by a human, who is called dermatologist. During diagnosis, dermatologist exams the skin carefully by his eyes or using a device called dermoscope. The skin cancer malignant melanoma can be recovered if diagnosed and treat it in early stages. In this manner early diagnosing is a significant issue for patients. Be that as it may, just experienced specialist can characterize the skin cancer from other skin sicknesses. Thus the computer based skin cancer detection is necessary to provide recommendation for non-specialized user. The development of this diagnosis system over 20 years, the accuracy of diagnosis is around 73% to 98%. The variations of diagnosis are sufficiency large and there are lacks of detail of the test methods. In this work, a developing an automatically skin cancer detection system to classify the cancer images into either benign or malignant melanoma is presented and discussed through using different approaches. The images in the databases used are contained both digital photo and dermoscopy images. Dermoscopy, also calls Dermatoscopy or Epiluminescence light microscopy (ELM). It was first announced on 1987, it is a kind of imaging technique uses to exanimate lesions with a dermatoscope. The process is done by placing an oil immersion between the skin and the optics. The lighting can magnify the skin that improve on reveal most of the pigmented structure, different color shades that is not visible to naked eye; and allows direct viewing and analysis of the epidermis (the outer layer of the skin) and papillary dermis (the deep vascular inner layer of the skin). Physician uses this technique for diagnosis of skin cancer more efficiency. The historical researches have proved that ELM can improve the diagnostic accuracy by 5 – 30% compare to traditional imaging [7]. Furthermore, ELM has evolution and digitalize that can be used to classification with computer. It given several advantages in diagnosing like considering small suspicious lesion and objective evaluation of parameters: geometry, color and texture; and storage of image and comparable for future development [8]. ELM may improve the accuracy of clinical diagnosing but it requires the experienced dermatology physician to exanimate the image. This thesis works on compare different approach with their performance and accuracy.

II. RELATED WORK

Outstanding amongst other ways to deal with overcome previously mentioned challenges in robotizing medicinal imaging conclusion is to rearrange the goal of the investigation and to abuse some sort of speculative data about the imaged structures. The images can then be classified using their morphological, color, fractal, and texture properties. Laws, 1980 in his work transformed digital images to identify

Sultana Bano, M.Tech. Scholar, Cse Department, Rama University, Kanpur

Anugrah Srivastava, Assistant Professor, CSE Department, RAMA University, KANPUR

regions of interest and provided an input dataset for segmentation and features detection operation.

Malignant melanoma currently accounts for a third of most frequent type of skin cancer and 79% of skin cancer death. The incidence of malignant melanoma in fair-skinned patients has increased histrionically in most parts of the world over the past few decades (Rubegni et al., 2002; Stanganelli et al., 2005; Dobrescu et al., 2010). In Europe, it's been reported that malignant melanoma incidence is increasing by 5% every year and it is responsible for 91% of skin cancer death (Sboner et al., 2001; Ali & Deserno, 2012). In a bid to improving early detection, a number of diagnostic checklists and rules have been proposed such as Seven Point Checklist (HealSmith et al., 1994), and ABCDE: **A**symmetry, **B**order, **C**olor, **D**iameter, **E**volution checklist (Fitzpatrick et al., 1998). These rules and checklists specify visual features associated with malignant lesion symptoms.

Gilmore et al., 2009 used lacunarity (a measure of transitional invariance of an object used in quantifying aspects of patterns that exhibit scale-dependent changes in structure) to provide a promising method for automated assessment of melanocytic nevi and melanoma. The fuzzy-based histogram analysis technique used by Stanley et al., 2003 provided a possibility for automated skin lesion discrimination in dermatology clinical images. Rubegni et al., 2002 developed an automated process using artificial neural network methods based on mathematical analysis of pigmented skin lesions to avoid the problem of qualitative interpretation made by the use of ELM by Dermatologist. Kreutz et al., 2000 presented a combination of artificial neural network approach with texture analysis using digital image processing and mixture-of-experts to attempt automation of skin cancer diagnosis. Ganster et al., 2001 developed a system that provided for automated computerized analysis of images obtained from ELM to enhance the early recognition of malignant melanoma. Sheha et al. 2012 used Grey-Level Co-occurrence Matrix (GLCM) and Multilayer perceptron classifier (MLP) for automatic Detection of Melanoma Skin Cancer using Texture Analysis. One core challenge however with many of aforementioned approaches is their inability to integrate well with ubiquitous devices such as mobile telephony, now largely accessible to underserved areas (Mobithink, 2012).

In this paper, a developing a naturally skin cancer recognition framework to order the cancer images into either favorable or harmful melanoma is introduced and examined through utilizing diverse methodologies. The images in the databases utilized are contained both computerized photograph and dermoscopy images.

III. SKIN CANCER DETECTION SYSTEM

Most of the systems consist of following procedures: image pre-processing to removes the noise and fine hair; Post-processing: to enhance the shape of image; Segmentation: to removes the healthy skin from the image and find the region of interest, usually the cancer cell, remains in the image; Feature extraction extracts the useful information or image properties from the segmented images.

A. Pre-processing

The initial phase in master frameworks utilized for skin investigation includes the securing of the tissue computerized

image for skin cancer identification. The skin cancer images as a rule contain fine hairs, clamor and air bubbles. These feature that is not part of the cancer cell and would reduce the accuracy of the border detection or segmentation. The first step to do is apply some image processing techniques to the images. Thus pre-processing used to referring to remove the unwanted features on the skin and post-processing referring to enhancement to the shape of image.



Figure.1 True image identification of skin cancer

B. Segmentation process

In this stage, the improved skin image is divided to isolate the tumor from the foundation (skin). Division expels the sound skin from the image and finds the district of intrigue. Generally the cancer cells stays in the image after division. Segmentation used here is Threshold Segmentation. Thresholding provides an easy and convenient way to perform the segmentation on the basis of the different intensities or colors in the foreground and background regions of an image. The input to a thresholding operation is typically a grayscale or color image. After segmentation, the output is a binary image. Segmentation is accomplished by scanning the whole image pixel by pixel and labelling each pixel as object or background according to its binarized gray level.



Figure.2 Segmented image

Segmentation algorithms are based on one of two basic properties of intensity values discontinuity and similarity. First category is to partition an image based on abrupt changes in intensity, such as edges in an image. Second category is based on partitioning an image into regions that are similar according to predefined criteria. Histogram Threshold approach falls under this category.

In this work, threshold and statistical region merging (SRM) are implemented and compare their accuracy with neural network classifier.

C. Feature extraction and Selection

At this stage, the imperative highlights of image information are extricated from the divided image. By separating highlights, the image information is limit to an arrangement of highlights which can recognize Malignant and Benign melanoma.

The separated highlights ought to be the two delegates of tests and point by point enough to be ordered. 2D wavelet change is utilized for the element extraction. In this framework, 2-D wavelet parcel is utilized and the upgraded image in dark scaled as an info. Bior wavelets at two steps of decomposition are used. At each step of decomposition, the wavelet of primary image is divided into an approximate and three detailed images which show the basic information and vertical, horizontal and diagonal details, respectively.

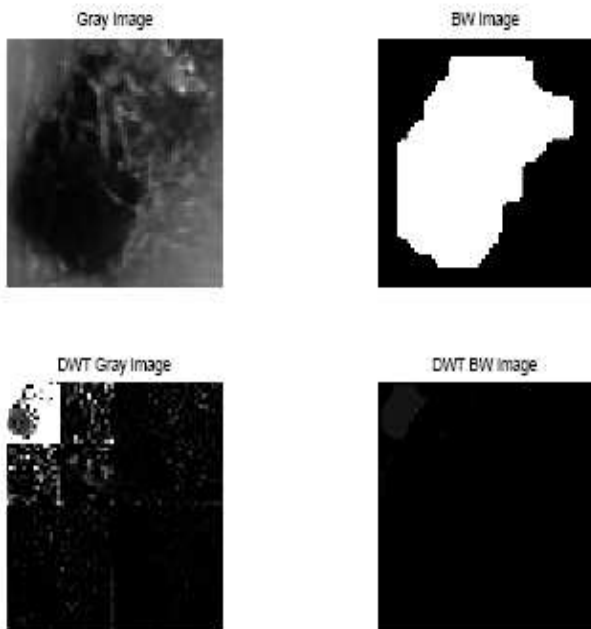


Figure.3 Image composition wavelets

D. Artificial Neural Network Classifier

Artificial neural network (ANN) structures have been perceived for various years as an intense innovation for taking care of certifiable image preparing issues. The basic role of this unique issue is to show some current accomplishment in taking care of image preparing issues and ideally to persuade other image handling scientists to use this innovation to take care of their certifiable issues.

A classifier is a category of unified modeling language (UML) elements that has some features such as attributes or methods in common. Classifier is used for classifying Malignant Melanoma from other skin diseases. Based on the computational simplicity Artificial Neural Network (ANN) based classifier is used. In this proposed system, a feed forward multilayer network is used.

Back-propagation neural network is one of the most common neural network structures, as it is simple and effective. Back propagation (BPN) Algorithm is used for

training. There must be input layer, at least one hidden layer and output layer. The hidden and output layer nodes adjust the weights value depending on the error in classification.

Auto-associative neural network is a network made of equal size of the input layer and the output layer, and smaller size in hidden layer.

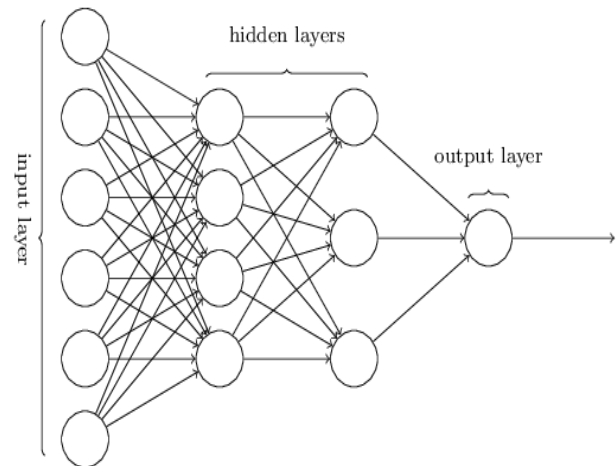


Figure.4 Artificial Neural Network

IV. RESULT AND DISCUSSION

Two neural networks are used as classifier, Back-propagation neural network (BNN) and Auto-associative neural network (AANN). We obtained training image with simulation of MATLAB. These obtained training images to compare at different layer.

Table 1 show as a best result with highest overall accuracy is 90.2%. The best BNN is three hidden layer with 40, 25 and 10 neurons for each hidden layer. The accuracy is increase with number of neuron in hidden layer. However, number of hidden layer cannot improve the result but it could reduce the probability of over-fitting.

Table 1

No of Layer	No of Neuron	Training (%)	Testing (%)	Validation n (%)	Total (%)
1	10	83.6	58.6	62.7	75.6
1	20	99.8	62.4	64.2	86.4
1	30	100.5	55.3	75.3	89.8
2	10,5	85.5	48.8	54.9	68.6
2	20,10	96.9	56.0	71.5	87.4
2	30,20	99.3	59.6	67.5	88.5
3	10,8,6	93.4	63.5	70.5	85.4
3	20,12,8	98.6	61.7	74.7	88.0
3	30,20,10	99.3	61.1	75.4	89.8

The best AANN testing result found is 20 neurons in the first and third layer with overall accuracy 81.5% as table 5.2 illustrated. Unlike BNN, ANN provides a stable classification result in different number of neuron. However, when the layer 1 and layer 3 have different size of neuron, the classifier result has a significant low accuracy diagnosing result.

Table 2

Layer 1 to 4	Training	Validation	Testing	Total
10 4 10 4	85.7	58.4	68.3	78.6
10 5 10 4	84.3	55.5	67.6	74.7
20 4 20 4	88.2	59.7	66.5	78.3
20 10 20 10	90.5	62.3	65.7	83.1
30 4 30 4	88.6	58.5	72.2	81.7
30 10 30 4	87.4	56.7	65.5	75.4
40 4 40 4	88.3	62.2	67.8	77.9
40 20 40 4	87.8	55.4	61.5	74.5
40 10 30 4	42.6	38.7	38.9	38.8

V. CONCLUSION

A Computer based early skin cancer discovery framework is proposed in this paper. It ends up being a superior analysis technique than the customary Bioscopy strategy. The diagnosing strategy utilizes Digital Image Processing Techniques and Artificial Neural Networks for the classification of Malignant Melanoma from other skin ailments. Dermoscopic images were gathered and they are prepared by different Image handling methods. The cancerous district is isolated from sound skin by the strategy for division. The novel highlights of the sectioned images were separated utilizing 2-D Wavelet Transform. In view of the highlights, the images were delegated Cancerous and Non-cancerous. This system has got great precision moreover. By changing the Image handling methods and Classifiers, the precision can be enhanced for this framework.

REFERENCES

- [1] Cancer Research UK, "CancerWorldwide – the global picture", <http://www.cancerresearchuk.org/cancer-info/cancerstats/world/the-global-picture/>, Sept. 2012.
- [2] World Health Organization, <http://www.who.int/en/>.
- [3] Science Daily, "Cancer Projected To Become Leading Cause of Death Worldwide In 2010", <http://www.sciencedaily.com/releases/2008/12/081209111516.htm>, Dec 2008.
- [4] Robert S. Porter, "The Merck Manual", July 20, 2011. & D. L. Kasper, E. Braunwald, and A. Fauci, "Harrison's Principles of Internal Medicine", 17th ed., McGraw-Hill, New York (2008).
- [5] R. Anderson, A. Parrish, "The optics of human skin", The Journal of Investigative Dermatology, Vol. 77, pp 13-19, 1981.
- [6] T. DiChiara. "Pictures of Moles and Melanoma skin cancer – Learn to tell the difference with pictures.", Sept. 2010.
- [7] P. Rubergni, G. Cevenini, M. Burrioni, R. Perotti, G. Dell'Eva, P. Sbrano, C. Miracco, P. Luzi, P. Tosi, P. Barbini, L. Andreassi 2002, Automated diagnosis of pigmented skin lesions, *International Journal of Cancer*, Volume 101, Issue 6, pp. 576-580
- [8] U. Wollina, M. Burrioni, R. Torricelli, S. Gilardi, G. Dell'Eva, C. Helm, W. Bardey 2007, Digital dermoscopy in clinical practice: a three-centre analysis, *Skin Research and Technology Journal*, Volume 13, pp. 133-142
- [9] Ries L, Eisner M., Kosary C, et al (2003). SEER Cancer Statistics Review, 1975-2000. Bethesda, MD: National Cancer Institute. WWW page. URL: http://seer.cancer.gov/archive/csr/1975_2000/. Last accessed February 24, 2016
- [10] National Cancer Registry Programme (2001). Report of population based cancer survey at Bangalore and Mumbai. ICMR, New Delhi.