

FACE RECOGNITION USING COMPLEX VALUED BACKPROPAGATION

Z Nafisah¹, Muhammad Febrian Rachmadi², and E M Imah^{1*}

¹Mathematics Department, Faculty of Mathematics and Natural Sciences, Universitas Negeri Surabaya
Jl. Ketintang, Surabaya, 60231, Indonesia

²School of Informatics, The University of Edinburgh, 11 Crichton Street, Edinburgh EH8 9LE, United Kingdom

*E-mail: ellymatul@unesa.ac.id

Abstract

Face recognition is one of biometrical research area that is still interesting. This study discusses the Complex-Valued Backpropagation algorithm for face recognition. Complex-Valued Backpropagation is an algorithm modified from Real-Valued Backpropagation algorithm where the weights and activation functions used are complex. The dataset used in this study consist of 250 images that is classified in 5 classes. The performance of face recognition using Complex-Valued Backpropagation is also compared with Real-Valued Backpropagation algorithm. Experimental results have shown that Complex-Valued Backpropagation accuracy is better than Real-Valued Backpropagation.

Keywords: *Face Recognition, Complex Valued Backpropagation*

Abstrak

Pengenalan wajah seseorang merupakan salah satu riset di bidang biometrika yang masih sangat menarik hingga saat ini. Dalam penelitian ini membahas algoritma *Complex Valued Backpropagation* untuk pengenalan wajah. *Complex Valued Backpropagation* merupakan algoritma yang dikembangkan dari algoritma *Real Valued Backpropagation* dimana bobot dan fungsi aktivasi yang digunakan bernilai kompleks. Dataset yang digunakan berjumlah 250 citra wajah yang diklasifikasikan kedalam 5 kelas. Performa hasil pengenalan wajah menggunakan *Complex Valued backpropagation* juga dibandingkan dengan algoritma *Real Valued Backpropagation*. Hasil eksperimen yang telah dilakukan menunjukkan bahwa akurasi *Complex Valued Backpropagation* lebih baik dibandingkan dengan *Real Valued Backpropagation*.

Kata Kunci: *Pengenalan Wajah, Complex Valued Backpropagation*

1. Introduction

Face recognition is one of the biometrical research. Until today's face recognition still interesting and challenging research area. Face recognition already using in many applications such as security systems, credit card verification, criminal identification etc. Recently, there are many methods and algorithms that is used for face recognition such as Chittora et al using support vector machine [1], Kathirvalavakumar et al using Wavelet Packet Coefficients and RBF network [2], Cho et al using PCA and GABOR wavelets [3], Sharma using PCA and SVM [4]. Almost all those authors studying face recognition using Real Valued Machine Learning.

Eiichi Goto in 1954 introduced the phase information for computation in his invention of "Parametron". He utilized the phase of a high-frequency carrier to represent binary or multi-valued information. However, the computational principle employed there was "logic" of Turing type, or von Neumann type, based on symbol processing, so that he could not make further extensive use of the phase [5]. Currently, many researchers extend the world of computation to pattern processing fields based on a novel use of the structure of complex-amplitude (phase and amplitude) information. Complex Valued neural Network (CVNN) have recently attracted broad research interests, for example, in seismics, sonar, and radar. CVNN have been shown to inherent

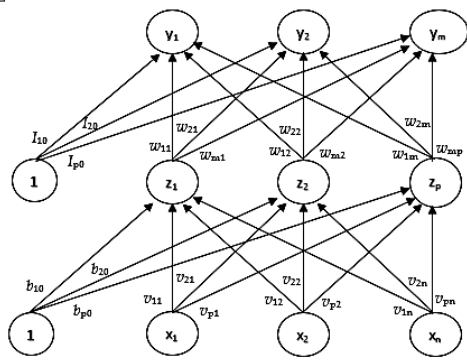


Figure 1. The Real Valued Backpropagation architecture model

advantages in reducing the number of parameters and operations involved. In addition, CVNN has computational advantages over real valued neural networks in solving classification problems [6]. Several literatures was use CVNN such as: A Novel Diagnosis System for Parkinson's Disease Using Complex-Valued Artificial Neural Network with k-Means Clustering Feature [7], Fluorescence Microscopy Images Recognition using Complex CNN [8], A New Automatic Method of Parkinson Disease Identification Using Complex-Valued Neural Network [9], Automatic Sleep Stage Classification of Single-Channel EEG by Using Complex-Valued Convolutional Neural Network [10].

One of the learning processes that utilizes Complex valued neural network is Complex Valued backpropagation (CVBP). CVBP is an algorithm developed from Real Valued Backpropagation algorithm where the weights and activation functions used are complex. According to research conducted by Zimmerman, the average learning speed of the CVBP algorithm is better than the Real Valued backpropagation (RVBP) [11]. Based on that literature, this study will discuss the performace comparison between Complex Valued Backpropagation (CVBP) algorithm and Real Valued Backpropagation (RVBP) algorithm for face recognition. This study already modified the converting process from complex value in hidden layer to real value in output layer using complex modulus, then the complex modulus is using as input variable in activation function. This process is more simple than CVBP that proposed by Zimmerman, because CVBP that proposed by Zimmerman is still using complex value until its mapping into output classes.

This paper is organized as follows: Section II describes the classification process using Real Valued backpropagation (RVBP) and Complex Valued Backpropagation (CVBP). The experi-

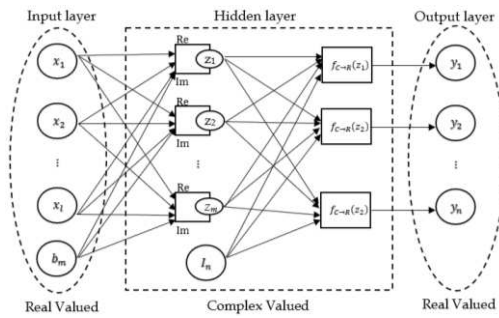


Figure 2. The Complex Valued Backpropagation architecture model

mental results are given in Section III. Finally, section IV is present the conclusion of the study.

2. Methods

Feature Extraction

Principal component analysis (PCA) is a feature extraction technique that can reduce data dimensions without losing important information in the data [4]. In PCA face recognition system, every face image is represented as a vector [12]. Let there are N face images and each image X_i is a 2-dimensional array of size $m \times n$ of intensity values. An image X_i can be converted into a vector of B ($B=m \times n$) pixels, where, $X_i = (x_{i1}, x_{i2}, \dots, x_{iB})$. Define the training set of N images by $X = (X_1, X_2, \dots, X_N) \in \mathfrak{R}^{B \times N}$. The covariance matrix is defined in Eq. 1.

$$C = \frac{1}{N-1} \sum_{i=1}^N (X_i - \bar{X})(X_i - \bar{X})^T \quad (1)$$

where $\bar{X} = \frac{1}{N} \sum_{i=1}^N X_i$ is the mean image of the training set. Then, the eigenvalues and eigenvectors are calculated from the covariance matrix C . Let $Q = (Q_1, Q_2, \dots, Q_r) \in \mathfrak{R}^{B \times N}$ ($r < N$) be the r eigenvectors corresponding to r largest non-zero eigenvalues. Each of the r eigenvectors is called an eigenface. Now, each of the face images of the training set X_i is projected into the eigenface space to obtain its corresponding eigenface-based feature $Z_i \in \mathfrak{R}^{r \times N}$, which is defined in Eq. 2.

$$Z_i = Q^T Y_i, i = 1, 2, \dots, N \quad (2)$$

where Y_i is the mean-subtracted image of X_i .

Classification

Real Valued Backpropagation (RVBP)

Real Valued Backpropagation is models of multiple layer network where the weights and



Figure 3. (a) Original face image of five persons (b) Original face image with various position



Figure 4. The result of pre-processing image

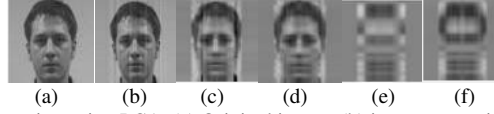


Figure 5. The result of feature extraction using PCA. (a) Original image, (b) image extraction result 99%, (c) image extraction result 92%, (d) image extraction result 80% (e) image extraction result 68% (f) image extraction result 44%

activation function used are real [13]. RVBP is a supervised learning algorithm, both input and target output vectors are provided for training the network [14]. The error data at the output layer is calculated using network output and target output. Then the error is back propagated to intermediate layers, allowing incoming weights to these layers to be updated [15]. Figure 1 shows RVBP model.

The input, weights, threshold, and output signals are a real number. The activity of the neuron z_p and y_m is defined in Eq. 3 and Eq. 4.

$$z_p = \sum_n v_{pn}x_n + b_p \quad (3)$$

$$y_m = \sum_p w_{mp}z_p + I_m \quad (4)$$

where v_{pn} and w_{mp} are real valued weight connecting neuron m and p , x_n is the input signal from neuron n , z_p is the input signal from neuron p , and b_p , I_m are the real valued threshold value of neuron p and m . To obtain the output signal, the activity value y_m is defined in Eq. 5.

$$f_R(y) = 1/(1 + \exp(-y)) \quad (5)$$

where the function above is called the sigmoid binary function. For the sake of simplicity, the networks used both in the analysis and experiments will have three layers. We will use V_{pn} for the weight between the input neuron n and the hidden neuron p , W_{mp} for the weight between the hidden neuron p and the output neuron m , B_p for the threshold of the hidden neuron B_p , and I_m for the threshold of the output neuron m . Let X_n , H_p , O_m denote the output values of the input neuron n , the hidden neuron p , and the output neuron m , respectively. Let also U_p and S_m denote the internal potentials of the hidden neuron p and

the output neuron m , respectively. U_p , S_m , H_p , O_m can be defined respectively as $U_p = \sum_n V_{pn}X_n + B_p$, $S_m = \sum_p W_{mp}H_p + I_m$, $H_p = f_R(U_p)$, and $O_m = f_R(S_m)$. Let $\delta^m = T_m - O_m$ denoted the error between the actual pattern O_m and the target pattern T_m of output neuron m . The real valued neural network error is defined by the following Eq. 6.

$$E = \frac{1}{2} \sum_{m=1}^N (T_m - O_m)^2 \quad (6)$$

where N is the number of output neurons.

Next, we define a learning rule for RVBP model described above. We can show that the weights and the thresholds should be updated according to the following Eq. 7 and Eq.8.

$$\Delta W_{mp} = -\alpha \cdot \frac{\partial E}{\partial W_{mp}} \quad (7)$$

$$\Delta V_{pn} = -\alpha \cdot \frac{\partial E}{\partial V_{pn}} \quad (8)$$

where α is learning rate. Equation can be expressed in Eq. 9 and Eq. 10.

$$\Delta W_{mp} = \alpha(\delta^m(1 - O_m)O_m) H_p \quad (9)$$

$$\Delta V_{pn} = \left((1 - H_p)H_p \times \sum_N \delta^m(1 - O_m)O_m W_{mp} \right) X_n \quad (10)$$

The algorithm of RVBP can be written as follows: (1) Initialization, set all weights and thresholds with a random real number; (2) Presentation of input and desired outputs (target), present the input vector x_1, x_2, \dots, x_N and corresponding desired target t_1, t_2, \dots, t_N one pair at a time, where N is the total number of training patterns; (3) Calculation of actual outputs, use the

TABLE I
CHARACTERISTICS AND SPECIFICATION USED

Characteristic	Specification
Architecture	1 hidden layer
Hidden Neuron	5, 50, 100, 150, and 200
Neuron Output	5 (Classification of face recognition)
Galat Consideration	0,000001
Learning Rate	0,05; 0,1; 0,25; 0,5; and 0,95
Maximum Epoch	50, 100, 200, 300, and 400

TABLE II
RESULTS WITH VARIOUS HIDDEN NEURON

Hidden Neuron	Accuracy (%)	
	RVBP	CVBP
200	87,29 ± 3,63	90,35 ± 2,92
150	88,12 ± 3,48	91,06 ± 2,61
100	85,76 ± 4,62	92,35 ± 3,77
50	73,76 ± 3,60	89,06 ± 5,02
5	33,29 ± 8,70	37,65 ± 12,70

formula in Eq. (3-5) To calculate output signals; (4) Updates of weights and thresholds, use the formulas in Eq. (9-10) To calculate adapted weights and thresholds.

Complex Valued Backpropagation (CVBP)

Complex Valued Backpropagation is an algorithm developed from Real Valued Backpropagation where the weights and activation function used are complex [16]. The goal of CVBP is to minimize the approximation error. Several kinds of literature that compare CVBP and RVBP often conclude that CVBP is better than RVBP . This research will also prove some statement best algorithm CVBP modelling than RVBP modelling. Figure 2 shows a CVBP model.

The input and output signals in this study are a real number, while weights, threshold, and activation function are a complex number. The activity of the neuron z_m and y_n is defined in Eq. 11 and Eq. 12.

$$z_m = \sum_l v_{ml}x_l + b_m \quad (11)$$

$$y_n = \sum_m w_{nm}z_m + I_n \quad (12)$$

where v_{ml} and w_{nm} are complex valued weight connecting neuron n and m , x_l is the input signal from neuron l , z_m is the input signal from neuron m , and b_m, I_n are the complex valued threshold value of neuron n and m . The output y_n is a complex number consisting of real and imaginary parts is defined in Eq. 13.

$$y_n = u + iv = z \quad (13)$$

where i denotes $\sqrt{-1}$. Although various output functions of each neuron can be considered, the

TABLE III
RESULTS WITH VARIOUS EPOCH

Epoch	Accuracy (%)	
	RVBP	CVBP
50	40,12 ± 11,43	86,82 ± 6,94
100	83,41 ± 3,16	90,71 ± 2,03
200	88,12 ± 3,48	92,35 ± 3,77
300	89,76 ± 3,42	92,00 ± 3,45
400	87,06 ± 2,60	90,24 ± 5,55

TABLE IV
RESULTS WITH VARIOUS LEARNING RATE

Learning rate	Accuracy (%)	
	RVBP	CVBP
0,05	87,29 ± 2,65	92,35 ± 2,24
0,10	89,76 ± 3,42	92,35 ± 3,77
0,25	84,35 ± 3,51	89,53 ± 3,82
0,50	84,47 ± 3,08	91,29 ± 4,37
0,95	83,29 ± 3,91	88,35 ± 3,53

output functions used in this study is defined by the following Eq. 14[17].

$$f_{C \rightarrow R}(z) = \sqrt{(f_R(u))^2 + (f_R(v))^2} \quad (14)$$

where $f_R(x) = 1/(1 + \exp(-x))$ and is called the sigmoid function, $x, u, v \in \mathbb{R}$. For the sake of simplicity, the networks used both in the analysis and experiments will have three layers. We will use V_{ml} for the weight between the input neuron l and the hidden neuron m , W_{nm} for the weight between the hidden neuron m and the output neuron n , B_m for the threshold of the hidden neuron m , and I_n for the threshold of the output neuron n . Let X_l, H_m, O_n denote the output values of the input neuron l , the hidden neuron m , and the output neuron n , respectively. Let also U_m and S_n denote the internal potentials of the hidden neuron m and the output neuron n , respectively. U_m, S_n, H_m, O_n can be defined respectively as $U_m = \sum_l V_{ml}X_l + B_m$, $S_n = \sum_m W_{nm}H_m + I_n$, $H_m = f_c(U_m)$, and $O_n = f_c(S_n)$. Let $\delta^n = T_n - O_n$ denoted the error between the actual pattern O_n and the target pattern T_n of output neuron n . The complex valued neural network error is defined by the following Eq.15[11].

$$E = \frac{1}{2} \sum_{n=1}^N (T_n - O_n) \overline{(T_n - O_n)} \quad (15)$$

where N is the number of output neurons.

Next, we define a learning rule for CVBP model described above. We can show that the weights and the thresholds should be updated according to the following Eq. 16 and Eq. 17[18].

$$\Delta W_{nm} = -\alpha \cdot \frac{\partial E}{\partial \text{Re}[W_{nm}]} - i \cdot \alpha \frac{\partial E}{\partial \text{Im}[W_{nm}]} \quad (16)$$

$$\Delta V_{ml} = -\alpha \cdot \frac{\partial E}{\partial \text{Re}[V_{ml}]} - i \cdot \alpha \frac{\partial E}{\partial \text{Im}[V_{ml}]} \quad (17)$$

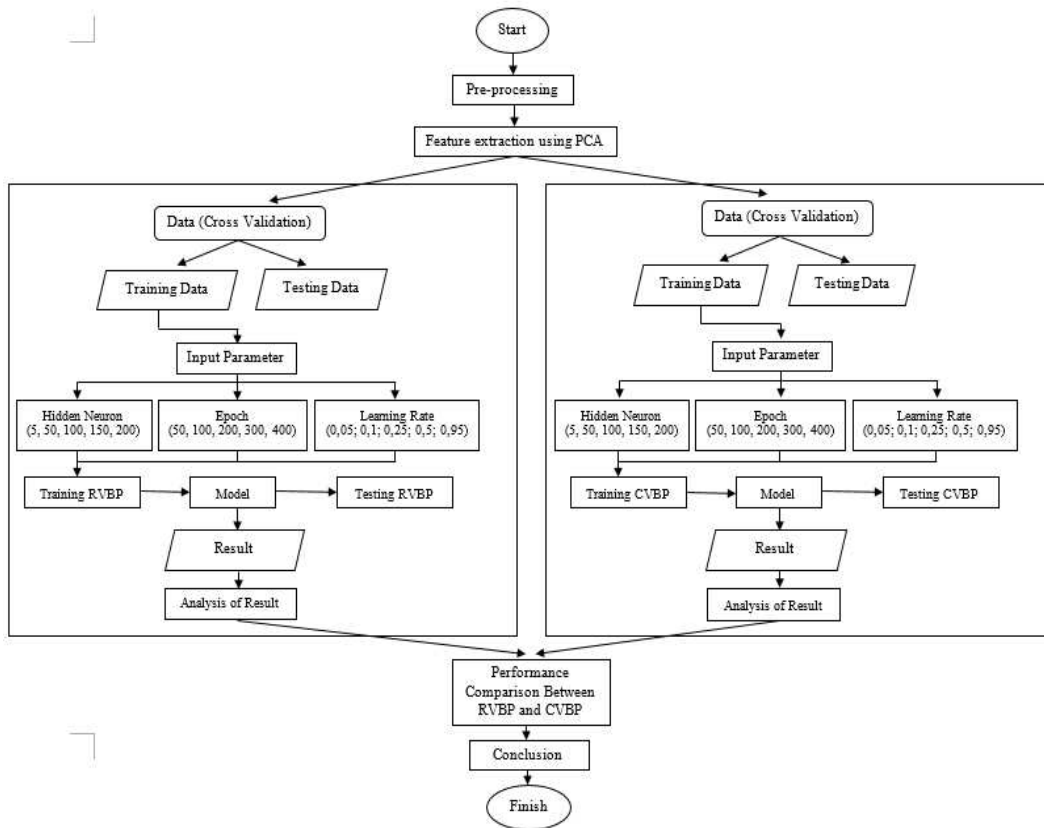


Figure 6. Research process

where α is learning rate. Equation can be expressed in Eq. 18 and Eq. 19.

$$\Delta W_{nm} = \alpha (Re[\delta^n](1 - Re[O_n])Re[O_n] + i.Im[\delta^n](1 - Im[O_n])Im[O_n])\bar{H}_m \quad (18)$$

$$\Delta V_{ml} = \alpha \left(\begin{array}{l} (1 - Re[H_m])Re[H_m] \times \\ \sum_N \left(\begin{array}{l} Re[\delta^n](1 - Re[O_n])Re[O_n]Re[W_{nm}] \\ +Im[\delta^n](1 - Im[O_n])Im[O_n]Im[W_{nm}] \\ -i(1 - Im[H_m])Im[H_m] \times \\ \sum_N \left(\begin{array}{l} Re[\delta^n](1 - Re[O_n])Re[O_n]Im[W_{nm}] \\ -Im[\delta^n](1 - Im[O_n])Im[O_n]Re[W_{nm}] \end{array} \right) \end{array} \right) \bar{X}_l \quad (19)$$

where \bar{z} denotes the complex conjugate of complex number z .

The algorithm of CVBP can be written as follows: (1) Initialization, set all weights and thresholds with a random complex number; (2) Presentation of input and desired outputs (target), present the input vector x_1, x_2, \dots, x_N and corresponding desired target t_1, t_2, \dots, t_N one pair at a time, where N is the total number of training patterns; (3) Calculation of actual outputs, use the formula in Eq. (11-14) To calculate output signals; (4) Updates of weights and thresholds,

use the formulas in Eq. (18-19) To calculate adapted weights and thresholds.

3. Results and Analysis

Datasets

The data that were used in this study are taken from web www-prima.inrialpes.fr [19] that consist of 250 images from 5 persons, each person has 50 images. The face images taken from various positions and there is one person wearing glasses. Data selection was done by performing pre-processing all of the data. Pre-processing data begins with grayscaling, cropping, resize, and feature extraction using Principal Component Analysis (PCA). After pre-processing, data will be divided into two parts: training dataset and testing dataset. The division was based on hold-out cross validation by randomly dividing the data with ratio 2:1. So, 165 images were generated as training data and 85 images as test data.

The sample data that were used in this study can be seen in Figure 3. Then each face image is converted to a grayscale image [20]. After that, each image is cropped so that it is clearly visible on the face, and the size of each image is changed to (64x64) pixels. Figure 4 shows the result from pre-processing image.

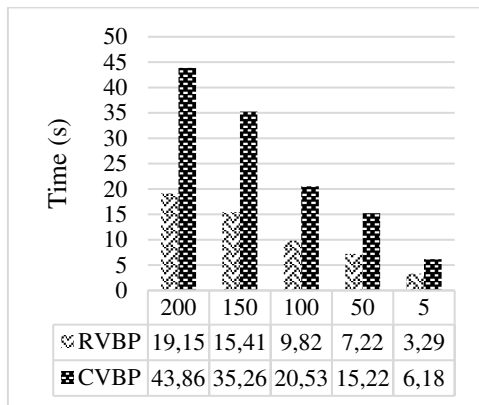


Figure 7. Results of training time in various hidden neuron

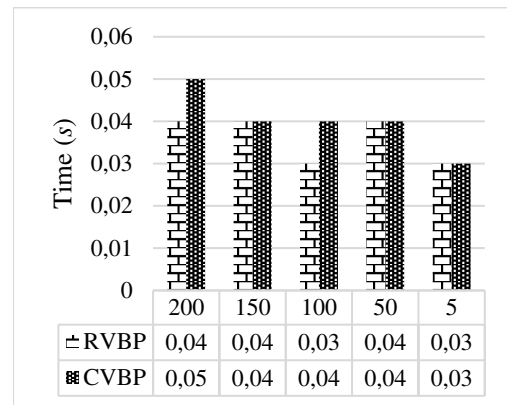


Figure 9. Results of testing time in various hidden neuron

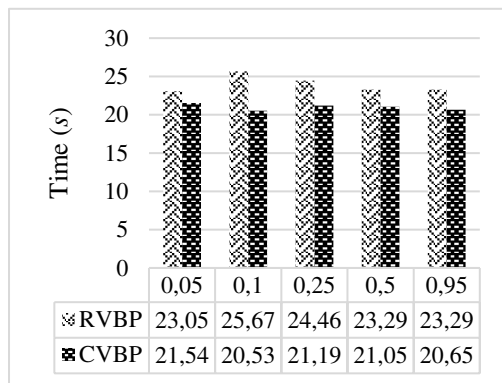


Figure 8. Results of training time in various learning rate

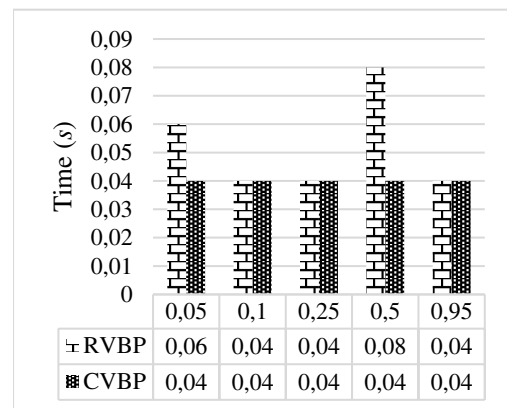


Figure 10. Results of testing time in various learning rate

Next step is feature extraction using Principal Component Analysis (PCA). Figure 5 shows the result of feature extraction using PCA. This study used image extracted features 99%.

Experimental Set Up

This research was conducted with multiple steps including pre-processing data, Real valued Back-propagation (RVBP) modeling, Complex Valued Backpropagation (CVBP) modeling, and analysis of performance comparison between CVBP and RVBP. For more details, research process can be seen in Figure 6.

Result

RVBP and CVBP experiment was done by using data based on pre-processing data. The RVBP and CVBP training process is conducted to obtain the optimal model to be used in the testing process. Table I showed the characteristics and specifications that were used for RVBP and CVBP architecture.

Some models have been produced that is, the weight of v, w and threshold b in the training process will be used in the testing process to determine the level of accuracy using test data. The complex valued backpropagation testing

process begins with input data and the optimum weight and threshold that has been generated in the training process, and then the RVBP and CVBP algorithm is applied only on feedforward section. After that, all network outputs are compared with actual targets for calculated accuracy values. The accuracy values is defined in Eq. 20.

$$Accuracy = \frac{\text{number of correctly classified data}}{\text{total number of data}} \times 100 \quad (20)$$

Tables II, III, and IV are the results of RVBP and CVBP testing performance by changing the number of hidden neurons, epoch number, and learning rate. Each experiment was conducted 10 times to obtain an average of accuracy. From Table II, III, and IV, it can be seen that CVBP algorithm has the best accuracy value $92,35 \pm 3,77$ percent in 100 hidden nodes, 200 epoch, and value of learning rate 0,1. For RVBP algorithm the best accuracy value is $89,76 \pm 3,42$ percent in 150 hidden nodes, 300 epoch, and value of learning rate 0,1.

Training time and testing time for RVBP and CVBP with various hidden neuron and learning rate can be seen in Figure 7, 8, 9, and 10. From the experiment result, CVBP performance is

better than RVBP because CVBP requires less hidden neurons in the formation of networks that will shorten the training and testing time. In addition, CVBP algorithm also requires shortening a number of epoch than the RVBP to obtain the best accuracy. This proves that the learning rate of the CVBP algorithm is faster than the RVBP algorithm.

4. Conclusion

From the conducted research, it can be concluded that performance of face recognition using CVBP is better than RVBP. CVBP algorithm is more detailed in the generalization of the learning model because it consists of real parts and imaginary parts. CVBP algorithm has the best accuracy value $92,35 \pm 3,77$ percent in 100 hidden nodes, 200 epoch, and value of learning rate 0,1 with time of test is 0,04 second, while RVBP algorithm has the best accuracy value $89,76 \pm 3,42$ percent in 150 hidden nodes, 300 epoch, and value of learning rate 0,1 with time of test is 0,04 second.

References

- [1] A. Chittora and O. Mishra, "Face Recognition Using RBF Kernel Based Support Vector Machine," vol. 1, no. 3, pp. 280–283, 2012.
- [2] T. Kathirvalavakumar and J. J. B. Vasanthi, "Face Recognition Based on Wavelet Packet Coefficients and Radial Basis Function Neural Networks," *J. Intell. Learn. Syst. Appl.*, vol. 05, no. 02, pp. 115–122, 2013.
- [3] H. Cho, R. Roberts, B. Jung, O. Choi, and S. Moon, "An efficient hybrid face recognition algorithm using PCA and GABOR wavelets," *Int. J. Adv. Robot. Syst.*, vol. 11, no. 1, pp. 1–8, 2014.
- [4] S. Sharma, "Face Recognition using PCA and SVM with Surf Technique," vol. 129, no. 4, pp. 41–46, 2015.
- [5] D. Xu, H. Zhang, and D. P. Mandic, "Convergence analysis of an augmented algorithm for fully complex-valued neural networks," *Neural Networks*, vol. 69, pp. 44–50, 2015.
- [6] A. Minin, A. Knoll, and H. Zimmermann, "Complex Valued Recurrent Neural Network: From Architecture to Training," vol. 2012, no. May, pp. 192–197, 2012.
- [7] H. Gürüler, "A novel diagnosis system for Parkinson's disease using complex-valued artificial neural network with k-means clustering feature weighting method," *Neural Comput. Appl.*, vol. 28, no. 7, pp. 1657–1666, 2017.
- [8] N. Guberman, "On Complex Valued Convolutional Neural Networks," 2016.
- [9] R. F. Olanrewaju and N. S. Zahari, "A New Automatic Method of Parkinson Disease Identification Using Complex-Valued Neural Network," vol. 6, no. 1, pp. 6–9, 2017.
- [10] J. Zhang and Y. Wu, "Automatic sleep stage classification of single-channel EEG by using complex-valued convolutional neural network," *Biomed. Eng. / Biomed. Tech.*, vol. 0, no. 0, 2017.
- [11] H. Zimmermann, A. Minin, and V. Kuserbaeva, "Comparison of the Complex Valued and Real Valued Neural Networks Trained with Gradient Descent and Random Search Algorithms.," *Esann*, no. April, pp. 27–29, 2011.
- [12] S. Thakur, J. K. Sing, D. K. Basu, M. Nasipuri, and M. Kundu, "Face Recognition using Principal Component Analysis and RBF Neural Networks," vol. 10, no. 5, pp. 7–15.
- [13] P. Sharma and M. Kaur, "Classification in Pattern Recognition: A Review," *Int. J. Adv. Res. Comput. Sci. Softw. Eng.*, vol. 3, no. 4, pp. 2277–128, 2013.
- [14] I. Muhammad and Z. Yan, "Supervised Machine Learning Approaches: a Survey," *ICTACT J. Soft Comput.*, vol. 05, no. 03, pp. 946–952, 2015.
- [15] S. L. Pinjare, "Implementation of Neural Network Back Propagation Training Algorithm on FPGA," vol. 52, no. 6, pp. 1–7, 2012.
- [16] A. S. Gangal, P. K. Kalra, and D. S. Chauhan, "Inversion of Complex Valued Neural Networks Using Complex Back-propagation Algorithm," vol. 3, no. 1, pp. 1–8, 2009.
- [17] F. Amin and K. Murase, "Neurocomputing Single-layered complex-valued neural network for real-valued classification problems," vol. 72, pp. 945–955, 2009.
- [18] A. C. A. Neural and N. Cwann, "Combined Complex-Valued Artificial Neural Network (CCVANN)," vol. II, no. 1, pp. 4–8, 2011.
- [19] N. Gourier, D. Hall, and J. L. Crowley, "Estimating face orientation from robust detection of salient facial structures," *FG Net Work. Vis. Obs. Deictic Gestures*, pp. 17–25, 2004.
- [20] G. Jyothi, C. Sushma, and D. S. S. Veeresh, "Luminance Based Conversion of Gray Scale Image to RGB Image," *Int. J. Comput. Sci. Inf. Technol. Res.*, vol. 3, no. 3, pp. 279–283, 2015.