

# THE FIRST REPORT OF THE DIVERSITY OF ENSIFERA (INSECTA: ORTHOPTERA) FROM ROKAN HULU DISTRICT, RIAU PROVINCE

SUTRISNO SYAHLAN, ROFIZA YOLANDA, RIKI RIHARJI LUBIS

Biology Education Study Programme, Faculty of Teacher Training and Education, University of Pasir Pengaraian, Rokan Hulu District 28457, Riau Province, Indonesia

## ABSTRACT

The objective of this study was to determine the diversity of the suborder Ensifera in Dusun 3, Rambah Hilir Tengah, Rambah Hilir Sub-District, Rokan Hulu District, Riau Province, Indonesia. The study was conducted from September 2015 to January 2016 at six sampling locations by sweep net and hand picking at day and night hours. We recorded 17 species of the Ensifera belonging to 12 genera, 2 families, and 10 subfamilies. The diversity comprised of *Conocephalus maculatus*, *Conocephalus melaenus*, *Conocephalus* sp., *Elbenia* sp., *Elimaea* sp., *Euscirtus concinnus*, *Hexacentrus unicolor*, *Loxoblemus parabolicus*, *Mecopoda elongate*, *Mecopoda* sp., *Nisitrus vittatus*, *Orthelimaea* sp., *Podoscirtinae* species 1 (unidentified), *Teleogryllus emma*, *Teleogryllus* sp., *Trellius* sp. and *Xabea* sp. The *C. maculatus* and *E. concinnus* were the predominant species in this study.

KEY WORDS: crickets, katydids, grassland

Corresponding Author: SUTRISNO SYAHLAN | email: [sutrisnosyahlan@gmail.com](mailto:sutrisnosyahlan@gmail.com)

Submitted: 06-04-2017 | Accepted: 22-05-2017

## INTRODUCTION

Indonesia is a *mega-biodiversity* country which endowed rich and unique biodiversity in the tropical belt between Indomalaya dan Australasia (FWI/GFW, 2001; Rhee *et al.*, 2004). The insect is one of the most diverse groups of animals found in Indonesia (Darnaedi & Noerdjito, 2007). This group is one of the most success organism due to its abundance of more than 25 orders and one million species (Fried & Hademenos, 2006) and also has a worldwide distribution, from terrestrial to aquatic. One of the insect groups we can find easily in our environment is the Ensifera (Resh & Cardé, 2003).

Crickets and katydids (bush crickets, long-horned grasshoppers, and their relatives) constitute the suborder Ensifera. Their multisegmented antennae (more than 30 segments) characterize members of this suborder that, with few exceptions, are as long as or longer than the body. Tympanal organs, when present, are located on the fore tibiae. The ovipositor is long and used to place eggs in crevices, soft ground, or plant tissues. Eggs are laid singly or in small groups in or on stems or leaves, or in loose soil or humus. The cerci are unsegmented, and in most species of Ensifera (especially Grylloidea) they are rather long and flexible, and in males individuals of many species (especially Tettigoniodea), they are modified to form clasping structures to be used during copulation. A single spermatheca is usual, and accessory glands occur either as tubules opening at the base of the ovipositor. Most species are nocturnal and omnivorous (Resh & Cardé, 2003; Gillot, 2005; Tan & Kamaruddin, 2014).

The Ensifera live in virtually all terrestrial habitats from treetops to a meter or more beneath the ground; in or near treetops and in bushes, grasses, and other herbaceous plants; on the soil surface; in caves and shallow or deep burrows. Some excavate burrows in logs or standing trees. Some beach-dwelling species

run and jump readily on the water. Females of different groups lay eggs in stems or twigs, in wood, under bark, in the ground, or in burrows (Resh & Cardé, 2003; Gillot, 2005).

This group plays an ecological role, especially in the food web, health indicators of the terrestrial ecosystem and also for the human being. Some species are prey for larger animals such as birds while others are predators of smaller insects. Some are known to be keystone species while others may serve as good indicators of ecosystem health (Samways, 1997; Erawati *et al.*, 2004; Rentz, 2010). Some are reared and sold in large numbers as fish bait and food for laboratory animals in many parts of the world. Some act as pests and plant diseases. In Indonesia these group attacks various crops like rice, sugar cane, tobacco, tea, soy, corn, banana, bamboo, lemon grass, sugar cane, pineapple, young plant roots, beans, castor, potatoes, dadap, cassava, areca, mimosoid 'lamtoro' and other crops (OPETE, 2010).

However, data about the occurrence of the Ensifera species in Indonesia still poorly known and not up to date. Most data, mainly discuss the potential of this fauna as a pest of crops. Furthermore, data of this particular group found in Sumatra is still lacking. The early information about this fauna in Sumatra was reported by Karny (1926) and followed Ebner (1929). However, they did not provide the information from Riau Province, especially, in Dusun 3, Rambah Hilir Tengah, Rambah Hilir Sub-District, Rokan Hulu District. Information on the Ensifera species from this specific area will allow a better understanding of the overall biodiversity of this species not only to this highland area, but also Indonesia.

This study aims to record the Ensifera species including photographs which collected from Dusun 3, Rambah Hilir Tengah, Rambah Hilir Sub-District, Rokan Hulu District, Riau Province, Indonesia.

## METHODS

This study was conducted from September 2015 to January 2016 in six sampling sites of Dusun 3, Rambah Hilir Tengah, Rambah Hilir Sub-District, Rokan Hulu District, Riau Province, Indonesia (Figure 1). Table 1 presented the descriptions of each sampling site. Samples were collected by using sweep net and hand picking during the day and night hours and preserved in ice box which containing ice.

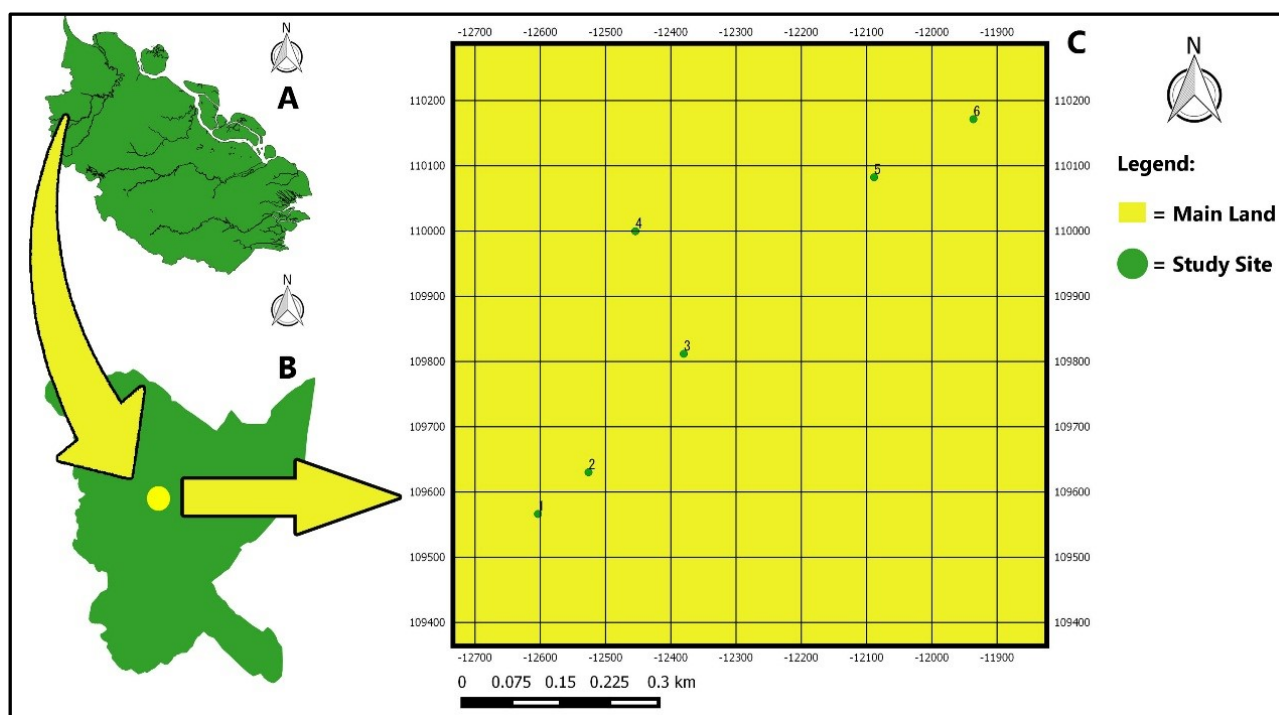
We transported all collected samples to the Laboratory of Biology, University of Pasir Pengaraian, Rokan Hulu District, Indonesia, photographed, identified and dry-mounted. The photographs of specimens were taken using a Nikon D3100 digital camera. After taking the picture, all specimens were identified based on Tan (2010a; 2010b; 2011a; 2011b; 2012a; 2012b); Tan & Wang (2012); Tan *et al.* (2012); Tan (2013); Tan *et al.* (2013) and Tan & Kamaruddin (2014). Mr. Tan Ming Kain of the Department of Biological Sciences, National University of Singapore

confirmed the species identification of the Ensifera by photographs of the specimens (personal communication on January 11<sup>th</sup> 2016).

We mounted the specimens using insect pin number 1 on the insect mounting board. A long, rust-proof pin goes through the middle of the thorax of the Ensifera and put on the mounting board. Then, all specimens stored inside the MERMET oven with 25°C temperature for two days and deposited in insect specimen box.

## RESULTS AND DISCUSSION

We reported a total 17 species of the suborder Ensifera belonging to 2 families (Gryllidae and Tettigoniidae), 10 subfamilies and 12 genera. Members of the family Tettigoniidae is represented 9 species, whereas 8 species represent the family Gryllidae. We provided the list of species in Table 2, and their photographs in Figure 2–6.



**Figure 1.** Study site of the Ensifera in Dusun 3, Rambah Hilir Tengah, Rokan Hulu District, Riau Province, Indonesia. A. Riau Province map, B. Rokan Hulu District map, C. Detail map of study site at Rambah Hilir Tengah.

**Table 1.** Sampling sites in Rambah Hilir Tengah and its characteristics.

Sites	Coordinates	Characteristics
Site 1	00°59'17.02"N 100°23'51.6"E	This location was next to the forest and full of grasses and bushes
Site 2	00°59'19.1"N 100°23'54.1"E	This place was next to the woods and complete of grasses and bushes
Site 3	00°59'25"N 100°23'58.8"E	This location was next to football field and surrounded with grasses
Site 4	00°59'31.1"N 100°23'56.4"E	This place was the rubber plantation and surrounded with grasses and bushes
Site 5	00°59'33.8"N 100°24'08.2"E	This place was the palm oil plantation and surrounded with grasses and bushes
Site 6	00°59'36.7"N 100°24'13.1"E	This place was the palm oil plantation and surrounded with grasses and bushes

**Table 2.** A Checklist of the Ensifera Species from 6 Station in This Study.

TAXON (SUBORDER/FAMILY/SUBFAMILY/SPECIES)	SITES					
	1	2	3	4	5	6
<b>SUBORDER ENSIFERA</b>						
<b>FAMILY GRYLLIDAE</b>						
Subfamily <b>Eneopterinae</b>						
1. <i>Nisitrus vittatus</i> (de Haan, 1842)	+	+	+	-	-	-
Subfamily <b>Euscyrtinae</b>						
2. <i>Euscyrtus concinnus</i> (de Haan, 1842)	+	+	+	+	+	+
Subfamily <b>Gryllinae</b>						
3. <i>Loxoblemus parabolicus</i> (Saussure, 1877)	-	+	+	+	+	+
4. <i>Teleogryllus emma</i> (Ohmachi & Matsuura, 1951)	-	-	+	-	-	-
5. <i>Teleogryllus</i> sp.	-	-	+	-	-	-
Subfamily <b>Oecanthinae</b>						
6. <i>Xabea</i> sp.	+	-	+	-	-	+
Subfamily <b>Phaloriinae</b>						
7. <i>Trellius</i> sp.	-	-	-	+	-	-
Subfamily <b>Podoscirtinae</b>						
8. Podoscirtinae species 1 (unidentified)	+	+	-	-	-	+
<b>FAMILY TETTIGONIIDAE</b>						
Subfamily <b>Conocephalinae</b>						
9. <i>Conocephalus maculatus</i> (Le Guillou, 1841)	+	+	+	+	+	+
10. <i>Conocephalus melaenus</i> (Haan, 1843)	+	+	+	+	-	+
11. <i>Conocephalus</i> sp.	+	+	+	-	-	+
Subfamily <b>Hexacentrinae</b>						
12. <i>Hexacentrus unicolor</i> Serville, 1831	-	+	-	-	-	-
Subfamily <b>Mecopodinae</b>						
13. <i>Mecopoda elongata</i> Linnaeus, 1758	+	+	+	-	+	-
14. <i>Mecopoda</i> sp.	+	+	+	-	+	-
Subfamily <b>Phaneropterinae</b>						
15. <i>Elbenia</i> sp.	-	+	-	-	-	-
16. <i>Elimaea</i> sp.	+	+	+	-	+	+
17. <i>Orthelimaea</i> sp.	-	+	-	-	-	-

Notes: (+) = present, (-) = not present.

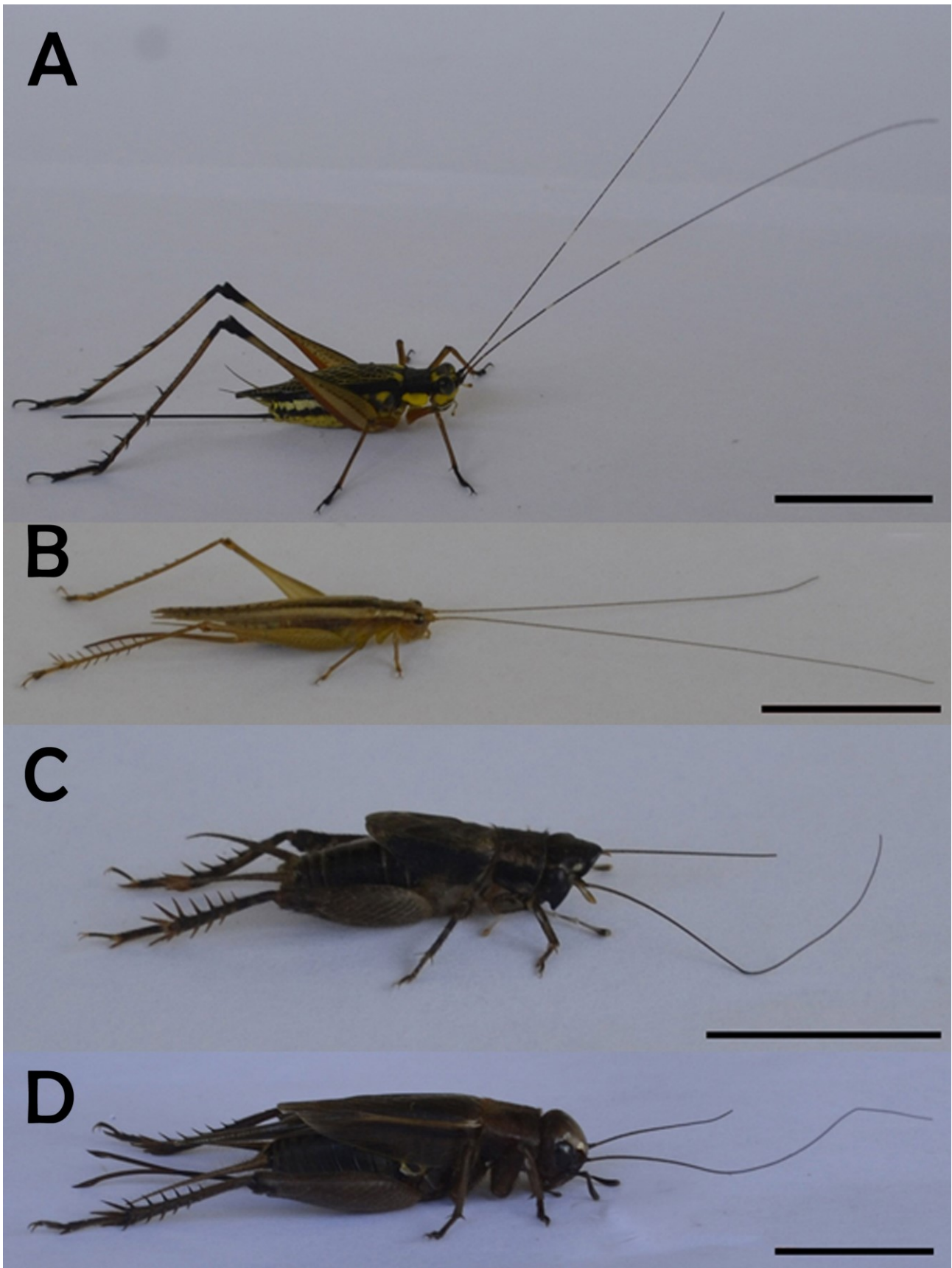
The majority of the Ensifera species recorded in this study are common which also inhabit outside Indonesia regions *e.g.* Malaysia, Singapore, China, Korea, and India (Muzamil & Mohamedsaid, 1998; Kim & Kim, 2002; Tan, 2010a, 2010b, 2011a, 2011b, 2012a, 2012b; Srinivasan & Prabakar, 2012; Tan & Wang, 2012; Tan *et al.*, 2012; Robillard & Tan, 2013; Tan, 2013; Tan *et al.*, 2013; Kim & Pam, 2014; Tan & Kamaruddin, 2014; Li *et al.*, 2015; Gaikwad *et al.*, 2016). In Indonesia, only some species of Ensifera were recorded by several researchers in taxonomy study, *e.g.* 10 species of Ensifera from Sulawesi (Sänger and Helfert, 1995); eight species of Elimaeini group from Sumatra and Java (Ingrisch, 1998); two species from rice ecosystem in Wonosari, Klaten, Java (Mahrub, 1998); 10 species from Gunung Kendeng and Gunung Botol, Gunung Halimun National Park (Erawati *et al.*, 2004); one species from the west of New Guinea (Gorochoy, 2005); five species from Small Islands of Karimunjawa National Park (Erniwati, 2009); 10 species from two mountainous ecosystems in Gunung Halimun-Salak National Park (Erawati and Kahono, 2010); three species *Tacca leontopetaloides* in Karimunjawa Islands, Central Java (Erniwati, 2013); four species from peatland of Lalan District, Banyuasin (Falahuddin *et al.*, 2015). Another study only focus on their role in agriculture area, *e.g.* as pest and predator, so the result only gave a little

information about the diversity of this long-horned grasshopper and its relatives group in Indonesia (Balitpalma, 2005; Darwis, 2006; OPETE, 2010; Rofidah and Tjahjaningrum, 2013; Tunggal *et al.*, 2013; Siahaya, 2014; Tauruslina *et al.*, 2015).

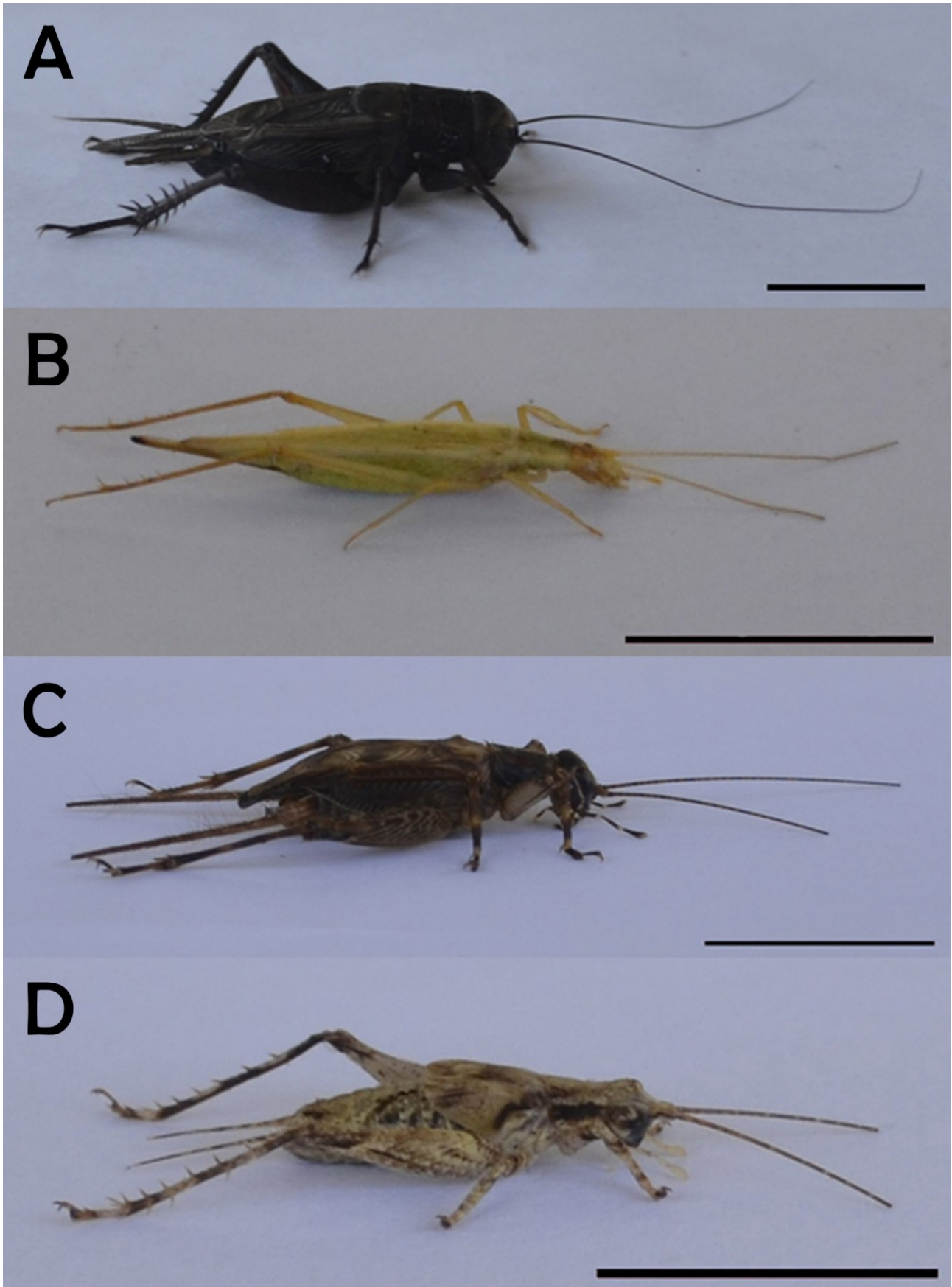
The most predominant species in this study were *Conocephalus maculatus* and *Euscyrtus concinnus*. *C. maculatus* is also known as one of the abundant species elsewhere and able to inhabit in all habitats which possess lowland grass (Tan, 2012; Bazelet & Naskrecki, 2014). Meanwhile, *E. concinnus* has long time been known to be widely distributed and act as a pest in a rice field (Barrion & Litsinger, 1980; Pathak & Dhaliwal, 1981; IRPI, 1983). We hope, our study could contribute to the knowledge of the biological diversity of Ensifera species in Indonesia, especially in Rokan Hulu District, Riau Province, which is relatively poorly known.

## CONCLUSION

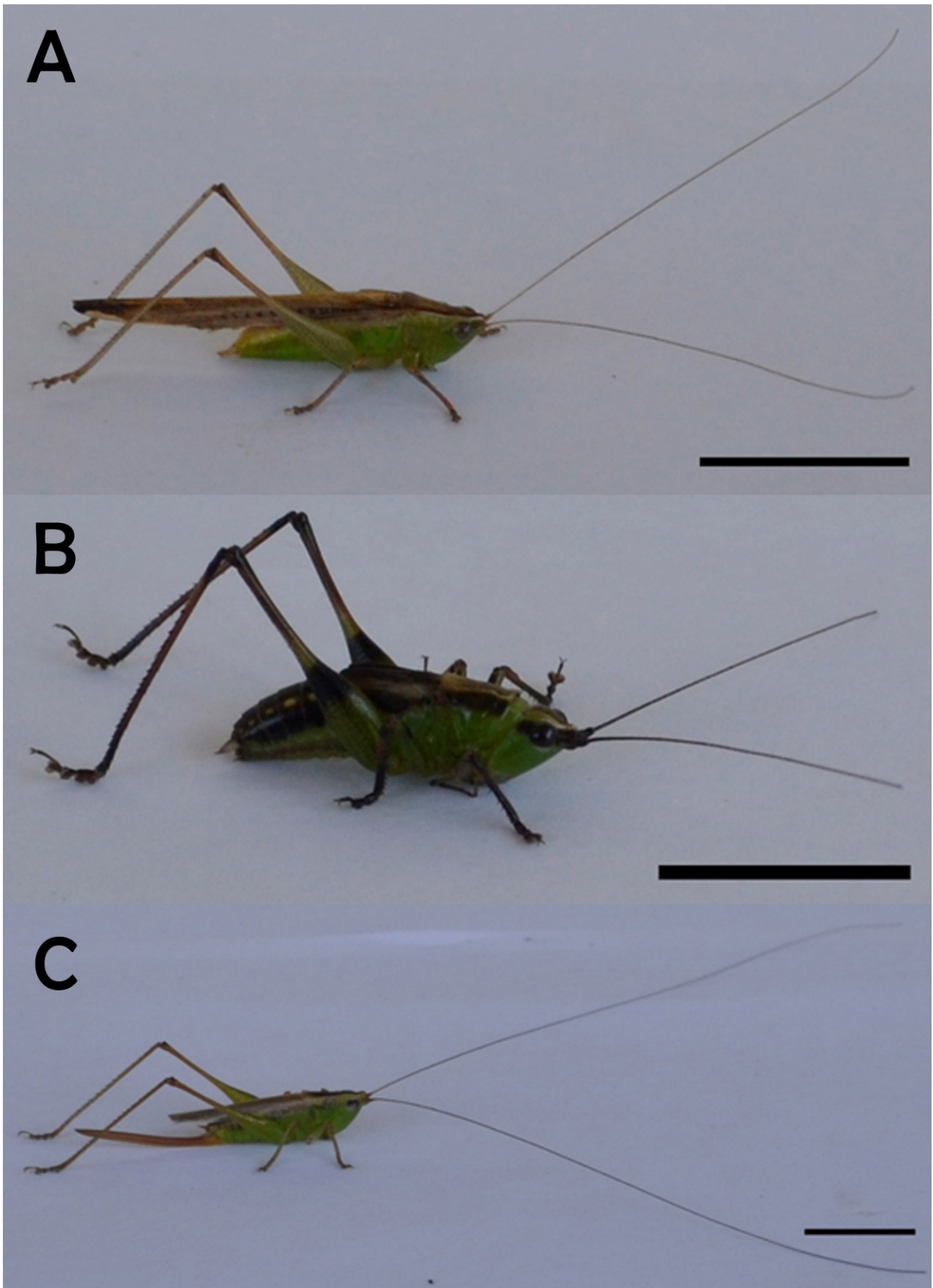
We recorded 17 species of Ensifera belonging to 2 families and 10 subfamilies. The Ensifera diversity namely *Conocephalus maculatus*, *Conocephalus melaenus*, *Conocephalus* sp., *Elbenia* sp., *Elimaea* sp., *Euscyrtus concinnus*, *Hexacentrus unicolor*, *Loxoblemus parabolicus*, *Mecopoda elongate*, *Mecopoda* sp., *Nisitrus vittatus*, *Orthelimaea* sp., Podoscirtinae species 1 (unidentified), *Teleogryllus emma*, *Teleogryllus* sp., *Trellius* sp. and *Xabea* sp.



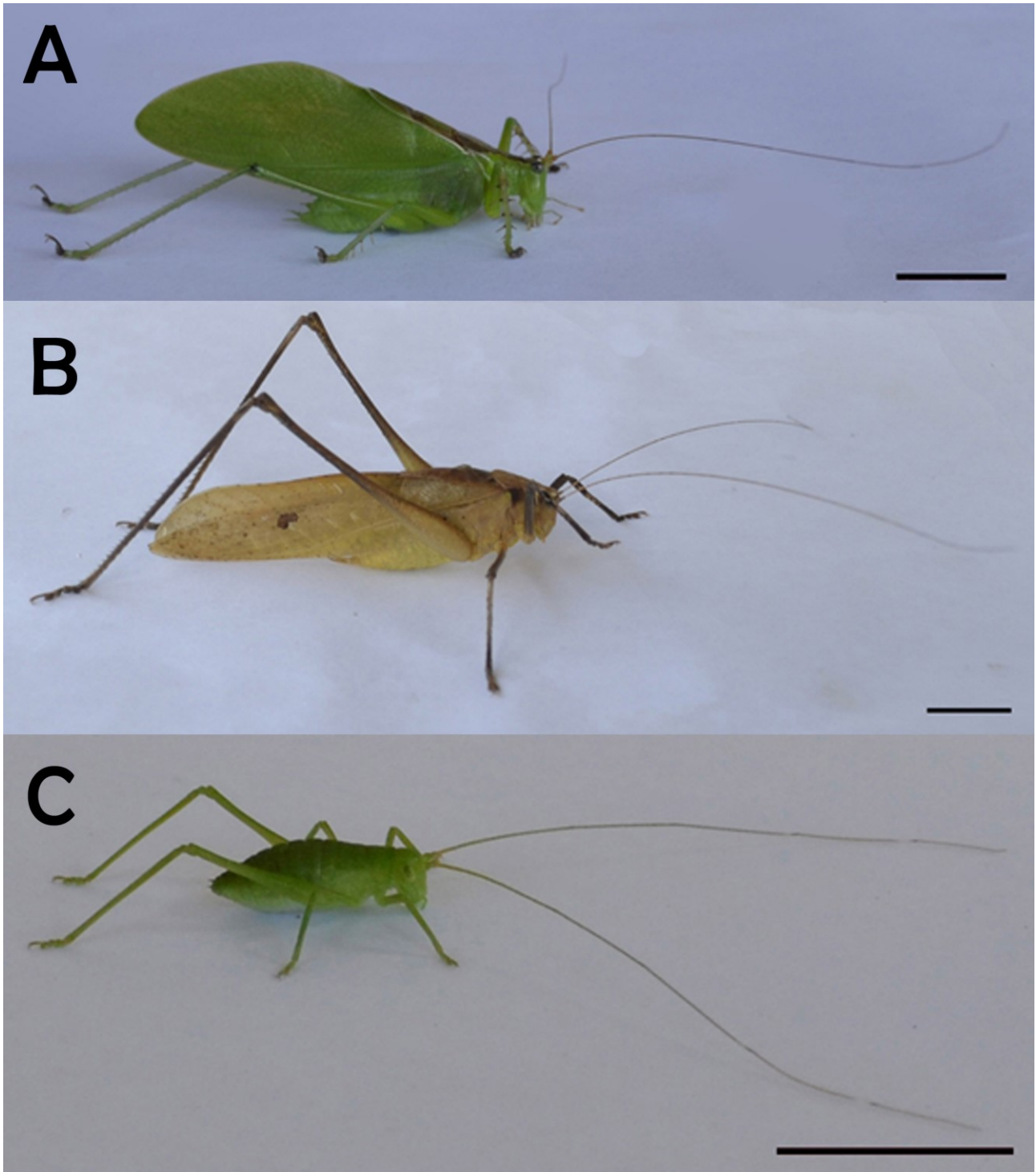
**Figure 2.** A. *Nisitrus vittatus* (de Haan, 1842); B. *Euscyrtus concinnus* (de Haan, 1842); C. *Loxoblemus parabolicus* (Saussure, 1877); D. *Teleogryllus emma* (Ohmachi & Matsuura, 1951).  
Lateral view, scale bar = 10 mm.



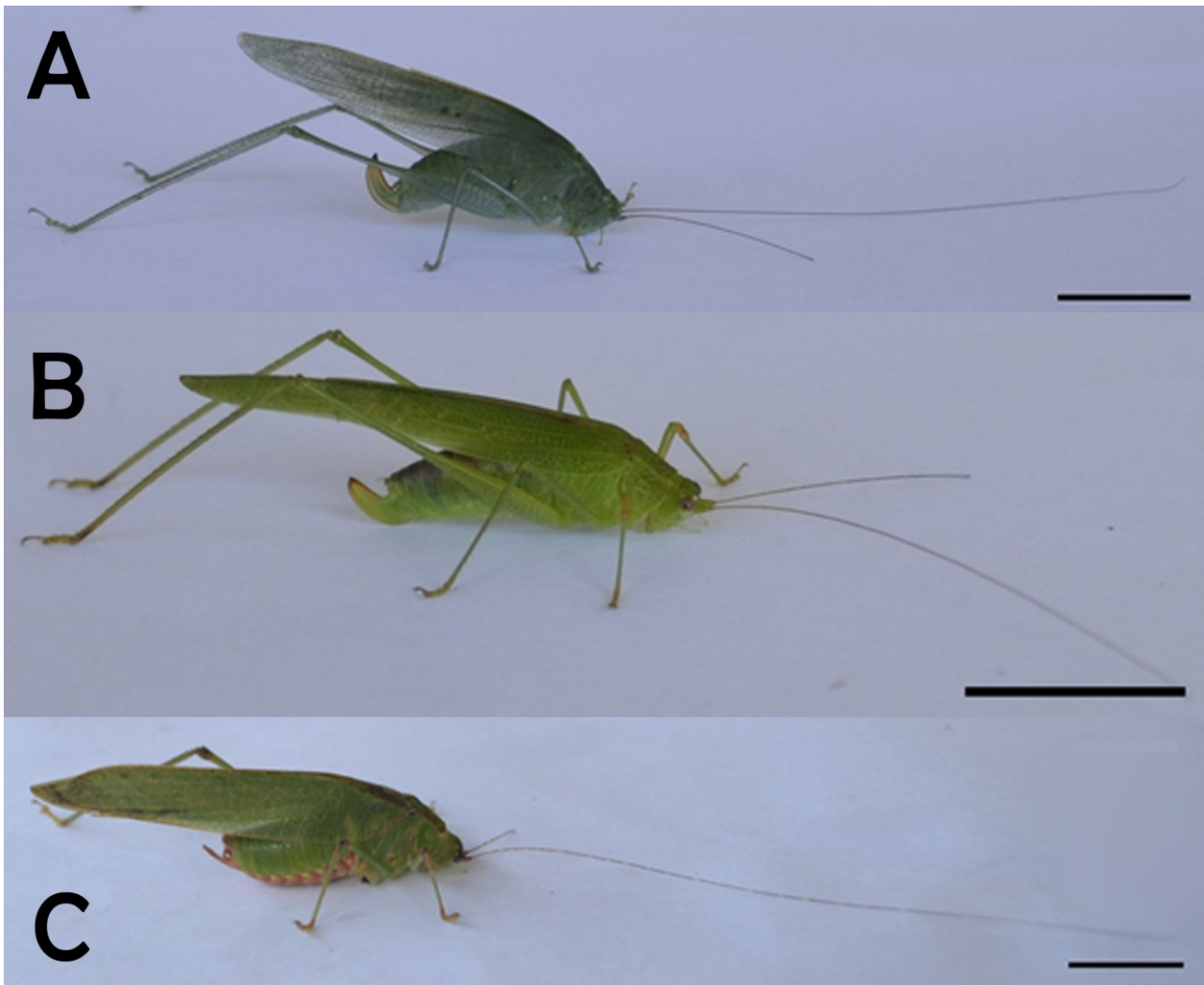
**Figure 3.** A. *Teleogryllus* sp.; B. *Xabea* sp.; C. *Trellius* sp.; D. Podoscirtinae spesies 1 (unidentified).  
Lateral view, scale bar = 10 mm.



**Figure 4.** A. *Conocephalus maculatus* (Le Guillou, 1841); B. *Conocephalus melaenus* (Haan, 1843); C. *Conocephalus* sp. Lateral view, scale bar = 10 mm.



**Figure 5.** A. *Hexacentrus unicolor* Serville, 1831; B. *Mecopoda elongata* (Linnaeus, 1758); C. *Mecopoda* sp.  
Lateral view, scale bar = 10 mm.



**Figure 6.** A. *Elbenia* sp.; B. *Elimaea* sp.; C. *Orthelimaea* sp.  
Lateral view, scale bar = 10 mm.

#### ACKNOWLEDGEMENT

We would like to express our deep gratitude to Mr. Tan Ming Kai of the Department of Biological Sciences, the National University of Singapore for his valuable support and help in identification of the Ensifera species.

#### REFERENCES

- BALITPALMA. 2005. Monograf Hama dan Penyakit Kelapa. Manado: Balai Penelitian Tanaman Kelapa dan Palma Lain.
- Barrion AT, Litsinger JA. 1980. *Euscyrthus concinnus* (Orthoptera: Gryllidae) - new rice pest in the Philippines. International Rice Resources Newsletter 5:19.
- Bazelet C, Naskrecki P. 2014. *Conocephalus maculatus*. The IUCN Red List of Threatened Species 2014:e.T20633133A56178694. [cited 2017 May 06]. Available from <http://dx.doi.org/10.2305/IUCN.UK.2014-3.RLTS.T20633133A56178694.en>.
- Darnaedi D, Noerdjito WA. 2007. Understanding Indonesian natural diversity: insect-collecting methods taught to parataxonomists during DIWPA-IBOY training courses. In: Okada H, Mawatari SF, Suzuki N, Gautam P, editors. Origin and Evolution of Natural Diversity 2007. Proceedings of International Symposium The Origin and Evolution of Natural Diversity; 1-5 October 2007; Sapporo; P.245-250.
- Darwis M. 2006. Controlling *Sexava* spp. through integrated pest Management. Prospektif 5:98-110.
- Ebner R. 1929. Gryllacriden und tettigoniiden (Orthoptera) von Nordost-Sumatra. Treubia 10:49-61.
- Erawati NV, Atmowidi T, Kahono S. 2004. Diversity and abundance of Orthoptera (Insect) at Gunung Kendeng and Gunung Botol, Gunung Halimun National Park, West Java, Indonesia. Berita Biologi 7:7-15.
- Erawati NV, Kahono S. 2010. Diversity and abundance of grasshopper and its relatives (Orthoptera) on Two Mountainous Ecosystems of Gunung Halimun-Salak National Park. Jurnal Entomologi Indonesia 7:100-115.
- Erniwati. 2009. Diversity and distribution of insects in small islands of Karimunjawa National Park. Berita Biologi 9:349-358.
- Erniwati. 2013. Karakter serangga pada tanaman Kecondang (Taccaceae: *Tacca leontopetaloides*) di Karimunjawa, Jawa Tengah. Fauna Indonesia 12:43-51.
- Falahudin I, Mareta DE, Rahayu IAP. 2015. Diversitas serangga ordo Orthoptera pada lahan gambut di Kecamatan Lalan Kabupaten Musi Banyuasin. Bioilmi 1:1-7.
- Friedl GH, Hademenos GH. 2006. Biologi. Edisi Kedua. Jakarta: Erlangga.
- FWI/GFW. 2001. Keadaan hutan Indonesia. Bogor: Forest Watch Indonesia dan Washington D.C. Global Forest Watch.
- Gaikwad SM, Koli YJ, Raut GA, Waghmare SH, Bhawane GP. 2016. Long-horned grasshoppers (Orthoptera: Tettigoniidae) in Radhanagari Wildlife Sanctuary, Maharashtra, India. Journal of Threatened Taxa 8:8533-8537.
- Gillot C. 2005. Entomology. 3<sup>rd</sup> Ed. Canada: University of Saskatchewan.



- Gorochov AV. 2005. New species of the tribe Phisidini from Indonesia (Orthoptera: Tettigoniidae: Meconematinae). *Zoosystematica Rossica* 13:243.
- Ingrisch S. 1998. A review of the Elimaieini In Western Indonesia, Malay Peninsula and Thailand (Ensifera, Phaneropteridae). *Tijdschrift voor Entomologie* 141:65–108.
- IPRI. 1983. *Field Problems of Tropical Rice*. Revised Edition. Manila: International Rice Research Institute.
- Karny HH. 1926. List of the Orthoptera, Copeognatha and Thysanoptera from Durian. In: Dammerman KW, editor. *The Fauna of Durian and the Rhio-Lingga Archipelago*. *Treubia* 8:281–326, 1 pl. (Copeognatha:314).
- Kim T, Kim J. 2002. Taxonomic study of the genus *Conocephalus* Thunberg in Korea (Orthoptera: Tettigoniidae: Conocephalinae). *Korean Journal of Entomology* 32:13–19.
- Kim T, Pham HT. 2014. Checklist of Vietnamese Orthoptera (Saltatoria). *Zootaxa* 3811:053–082.
- Li H, Hao-Yu L, Fu-Ming S. 2015. The investigation of Orthoptera from Huagaoxi Nature Reserve of Sichuan, China. *International Journal of Fauna and Biological Studies* 2:17–24.
- Mahrub E. 1998. Arthropods community structure in rice ecosystem without insecticidiae treatment. *Jurnal Perlindungan Tanaman Indonesia* 4:19–27.
- Muzamil M, Mohamedsaid MS. 1998. Catalogue of Tettigoniidae (Orthoptera) from Peninsular Malaysia. *Serangga* 3:111–152.
- OPETE. 2010. Basis data hama dan penyakit tanaman. [cited on 2016 Februari 26]. Available from: <http://www.opete.info/list-hama.php>.
- Pathak MD, Dhaliwal GS. 1981. Trends and strategies for rice insect problems in tropical ASIA. *The International Rice Research Institute* 64:1–15.
- Resh VH, Carde RT. 2003. *Encyclopedia of insects*. USA: Elsevier Science, Academic Press.
- Rentz D. 2010. *A guide to the katydids of Australia*. Melbourne: CSIRO Publishing.
- Rhee S, Kitchener D, Brown T, Merrill R, Dilts R, Tighe S. 2004. Report on biodiversity and tropical forests in Indonesia. Jakarta: Submitted in accordance with Foreign Assistance Act Sections 118/119. Prepared for USAID/Indonesia.
- Robillard T, Tan MK. 2013. A taxonomic review of common but little known crickets from Singapore and the Philippines (Insecta: Orthoptera: Eneopterinae). *Raffles Bulletin of Zoology* 61:705–725.
- Rofidah E, Tjahjaningrum ITD. 2013. Pengaruh Modifikasi Habitat Padi Varietas IR 64 dengan Aplikasi Trap Crop Menggunakan Serai Wangi (*Andropogon nardus*) Terhadap Komposisi, Kelimpahan, dan Keanekaragaman Arthropoda. *Jurnal Sains dan Seni Pomits* 2:E246–E251.
- Sänger K, Helfert B. 1995. Notes on Tettigoniids (Orthoptera, Ensifera) from Sulawesi. *Zeitschrift der Arbeitsgemeinschaft Österreichischer Entomologen* 47:89–96.
- Samways MJ. 1997. Conservation biology of Orthoptera. In: Gangwere SK, Muralirangan MC, Muralirangan M, editors. *Bionomics of grasshoppers, katydids and their kin*. Wallingford, Oxon, UK and New York: CAB International. p 481–496.
- Siahaya VG. 2014. Coconut Plant Damaged Attack by *Sexava nubila* and *Oryctes rhinoceros* in Kairatu Distric, West Seram Regency. *Jurnal Budidaya Pertanian* 10:93–99.
- Srinivasan G, Prabakar D. 2012. Additional records of Tettigoniidae from Arunachal. *Zoological Survey of India* 4:3255–3268.
- Tan MK. 2010a. Orthoptera of the Vacant Lots in Bedok South. *Nature in Singapore* 3:69–81.
- Tan MK. 2010b. Orthoptera in Pulau Ubin. *Nature in Singapore* 3:245–268.
- Tan MK. 2011a. The Copiphorini (Orthoptera: Tettigoniidae: Conocephalinae) in Singapore. *Nature in Singapore* 4:31–42.
- Tan MK. 2011b. The Species of *Asioplugis* Gorochov, 1998 in Singapore (Orthoptera: Tettigoniidae: Meconematinae). *Nature in Singapore* 4:233–239.
- Tan MK. 2012a. Orthoptera in the Bukit Timah and Central Catchment Nature Reserves (Part 2):Suborder Ensifera. Singapore: Raffles Museum of Biodiversity Research, Department of Biological Sciences, Faculty of Science, National University of Singapore.
- Tan MK. 2012b. Orthoptera of the exhumed Bidadari cemetery, Singapore. *Nature in Singapore* 5:343–350.
- Tan MK, Wang LK. 2012. The Orthoptera of Semakau landfill, Singapore: a project Semakau checklist. *Nature in Singapore* 5:309–318.
- Tan MK, Ngiam RWJ, Ismail MRB. 2012. A checklist of Orthoptera in Singapore parks. *Nature in Singapore* 5:61–67.
- Tan MK. 2013. Orthoptera in the mangrove forests of Singapore. *Nature in Singapore* 6:289–300.
- Tan MK, Ngiam RWJ, Ismail MRB, Ibrahim H. 2013. Diversity of Orthoptera from Neo Tiew Lane 2, Singapore. *Nature in Singapore* 6:211–222.
- Tan MK, Kamaruddin KN. 2014. Orthoptera of Fraser's Hill, Peninsular Malaysia. Singapore: Lee Kong Chian Natural History Museum Faculty of Science Nasional University of Singapore.
- Tauruslina E, Trizelia, Yaherwandi, Hamid H. 2015. Diversity analysis of brown planthopper *Nilaparvata lugens* rod natural enemies in paddy rice ecosystems in West Sumatera natural enemies in paddy rice ecosystem. *Prosiding Seminar Nasional Masyarakat Biodiversitas Indonesia* 1:581–589.
- Tunggali IS, Mamahit JME, Dien MF. 2013. Insects associated in rice nursery fields in east Kotamobagu Sub District, Bolaang Mongondow Regency. *Eugenia* 19:9–19.