

SEISMIC FACIES ANALYSIS ON 2D SEISMIC REFLECTION PROFILE IN “BARUNA” AND “JAYA” LINE AT NORTHEAST JAVA BASIN

Taufan Wiguna^{1*}, R. Rahadian¹, Sri Ardhyastuti¹, Safira Rahmah², Tati Zera²

¹*Technology Center for Marine Survey, Agency for the Assessment and Application of Technology, M.H. Thamrin St. No. 8, Jakarta Pusat, 10340*

²*Department of Physics, Faculty of Science and Technology, Syarif Hidayatullah State Islamic University Jakarta, Ir. H. Juanda St. No. 95 Ciputat Tangerang, 15412*

Received: 28th August 2016; Revised: 6th September 2016; Accepted: 27th October 2016

ABSTRACT

Two dimensions (2D) seismic profile of Baruna and Jaya lines at North-East Java Basin show seismic reflector characteristics that can be used to interpret sediment thickness and continuity. Those reflector characteristics that can be applied for seismic facies analysis that represents depositional environment. This study starts from seismic data processing that using Kirchhoff Post Stack Time Migration method which is 2D seismic profile as result. Seismic reflector characterization has been done to both 2D profiles. Seismic reflector characterization was grouped as (i) individual reflection, (ii) reflection configuration, (iii) reflection termination, (iv) external form. Individual reflection characteristics show high and medium amplitude, medium and low frequency, and continuous. Configuration reflection is continuous with parallel and subparallel type. Reflection termination shows on lap, and external form shows sheet drape. Local mound appearance can be interpreted as paleo-reef. Facies seismic analysis result for this study area is a shelf.

Keywords: Seismic facies; reflector; Kirchhoff; Post Stack Time Migration

Introduction

The 2D seismic profile is used to determine the subsurface condition in land and seafloor. It can be applied to any major of research not only in oil and gas exploration, e.g. geohazard, paleoenvironment, and continental shelf delineation. The 2D seismic profile contains seismic reflectors that represent physical characteristics of subsurface lithology. Those characters can be grouped as a unit which is called seismic facies.¹⁻²

Seismic facies analysis shows sediment type, process, and stratigraphy which are the result of geometry and reflection configuration interpretation. This paper discusses the interpretation of seismic reflector attributes and seismic facies analysis in 2D seismic reflection profile to determine sedimentation process and

deposition environment in study area.

Methods

This study was started by seismic data processing that SEG-D format. This data was collected using R/V Baruna Jaya II that owned by Agency for the Assessment and Application of Technology (Badan Pengkajian dan Penerapan Teknologi/ BPPT). Seismic data processing used a software named ProMAX version 5000 with Kirchhoff Post Stack Time Migration method (Figure 1).³⁻⁶

Data processing was done to 2 (two) seismic lines, they are “Baruna” as inline and “Jaya” as crossline. Both of them located at north Madura Island (Figure 2). The long line of “Baruna” is 3200 CDP (20 km) and Two-Way Times (TWT) 1000 ms. The long line of “Jaya” is 2000 CDP (13 km) and TWT 1600 ms.

* Corresponding author.

E-Mail: taufan.wiguna@bppt.go.id

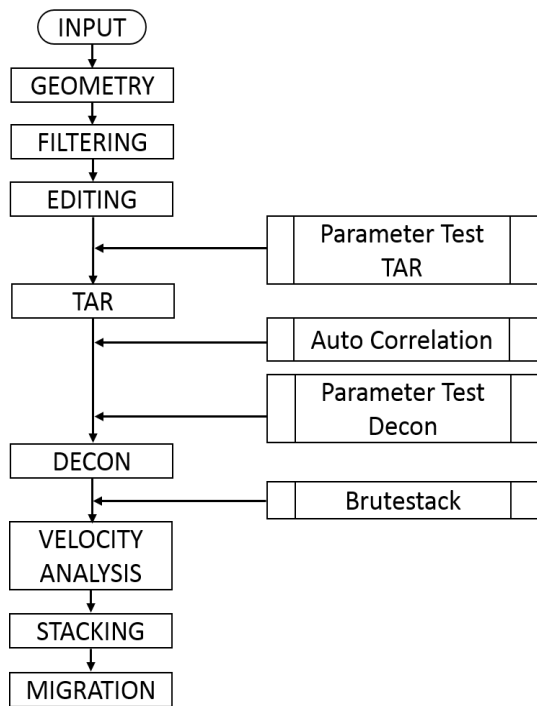


Figure 1. Seismic 2D Data Processing Flow Diagram



Figure 2. Location

Seismic facies analysis was done by seismic facies characterization in migrated 2D seismic reflection profile. Those characterizations involve⁷⁻¹²:

1. Individual reflector: amplitude and frequency characteristics, reflectors continuity. Individual reflector represents density, horizon continuity, horizon thickness, and the depositional process of each lithology.
2. Reflection termination: showing the sequence boundary type based on strata termination. Reflection termination is interpreted as stratification form and uses to recognize and correlate the depositional

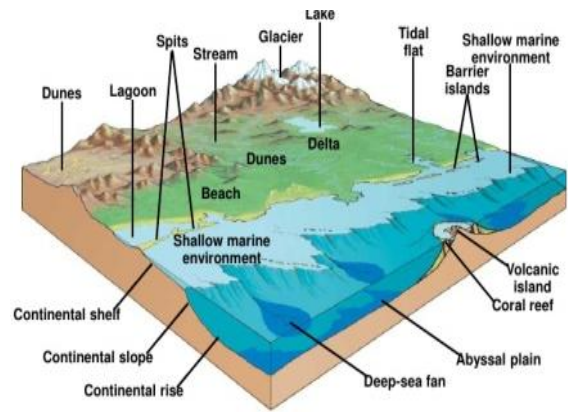


Figure 3. Sediment depositional environment illustration

sequence, interpret depositional environment, lithofacies estimation.

3. Reflection configuration: gross form stratification of depositional process, erosion, and paleo topography. Reflection configuration shows stratification pattern, depositional process, erosion, and paleo-topography.
4. External form: geometry pattern from reflection configuration. External form shows depositional form, sediment source, and geological setting.

The depositional environment can be determined as land (alluvial fan, fluvial, lake, desert, swamp), transition (delta, beach, lagoon, tidal flat), marine (reef, continental shelf, continental slope and rise, abyssal plain)¹³ (Figure 3).¹⁴

Result and Discussion

Reflector characteristics of 2D seismic profile in Baruna and Jaya line are:

1. Baruna Line (Figure 4)

Individual reflector characteristics in this profile show continuous reflection - high amplitude - low frequency (A), medium amplitude-high frequency (B). Reflection termination show parallel even (A and B), subparallel and hummocky (C). There is an interlayer between sub-parallel and hummocky (XYZ, C) and fault as a vertical boundary in eastern. On lap, as configuration reflection appears between parallel and subparallel (B).

2. Jaya Line (Figure 5)

2D seismic profile in this line shows low amplitude reflector (E), medium amplitude reflector (D), and strong amplitude reflector (D'), high frequency. Continuous reflector is reflector individual characters. Concordance (B) is reflection termination. Reflection configuration in this profile are parallel even (A) and hummocky (A'). Sheet drape and local mound appear as external form

Facies seismic analysis brings this study to paleocurrent interpretation which is a process of sediment supply in its paleoenvironment. Sediment supply relies heavily on currents energy. If the current energy is low, so the sediments are fine grain which are showed by box A and B in Baruna

profile and box A, D, and E in Jaya profile. Coarse grain sediments which are caused by high current energy showed by Jaya profile box B' and D'.

Currents energy changing means supply sediment changing. It is showed in Jaya profile, that are:

- a changing of configuration reflection from hummocky (A') become parallel even (A)
- the dip difference (B) between older and younger strata, which the older is more dip than younger strata (B)
- local mound appearance can be interpreted as paleo reef (C). It represents low sediment supply at that time
- a changing of amplitude from strong amplitude (D') to medium amplitude (D). it shows lithology changing from coarse grain to fine grain

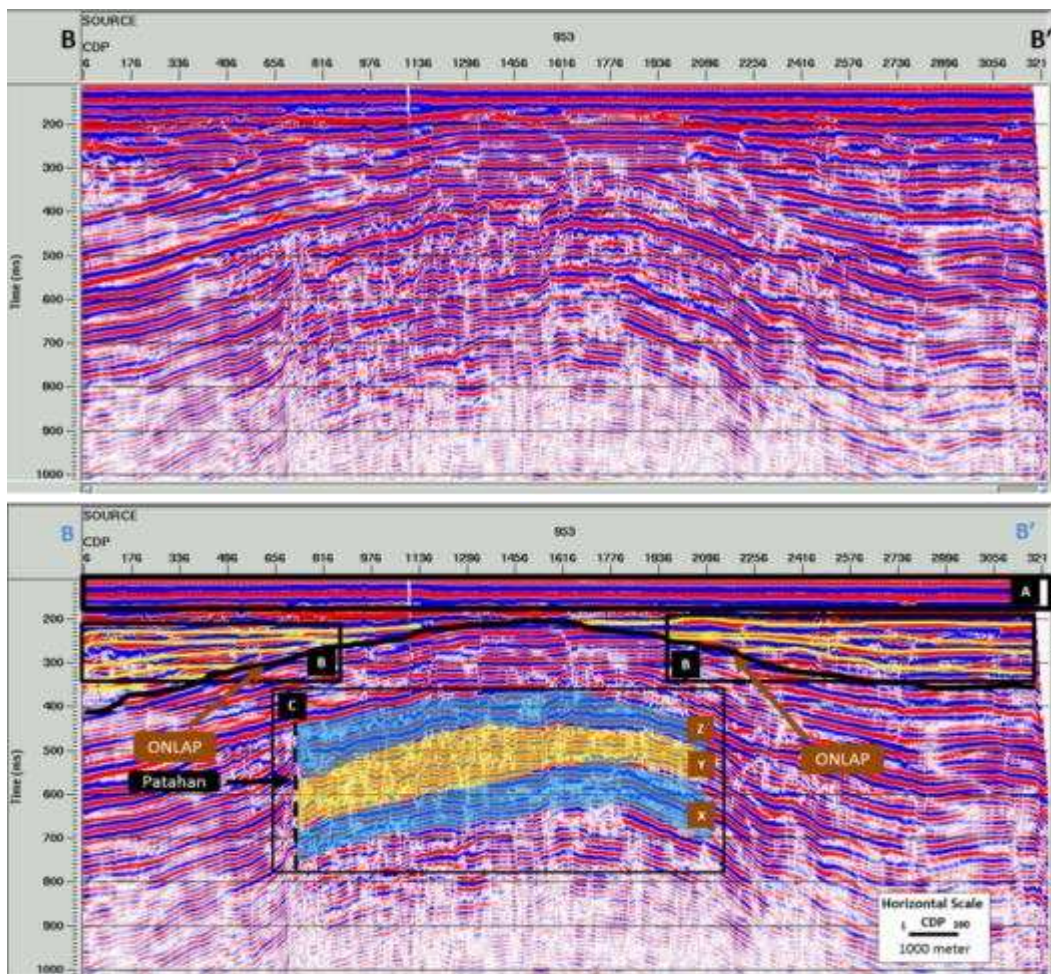


Figure 4. 2D Seismic Reflection of Baruna Line Profile

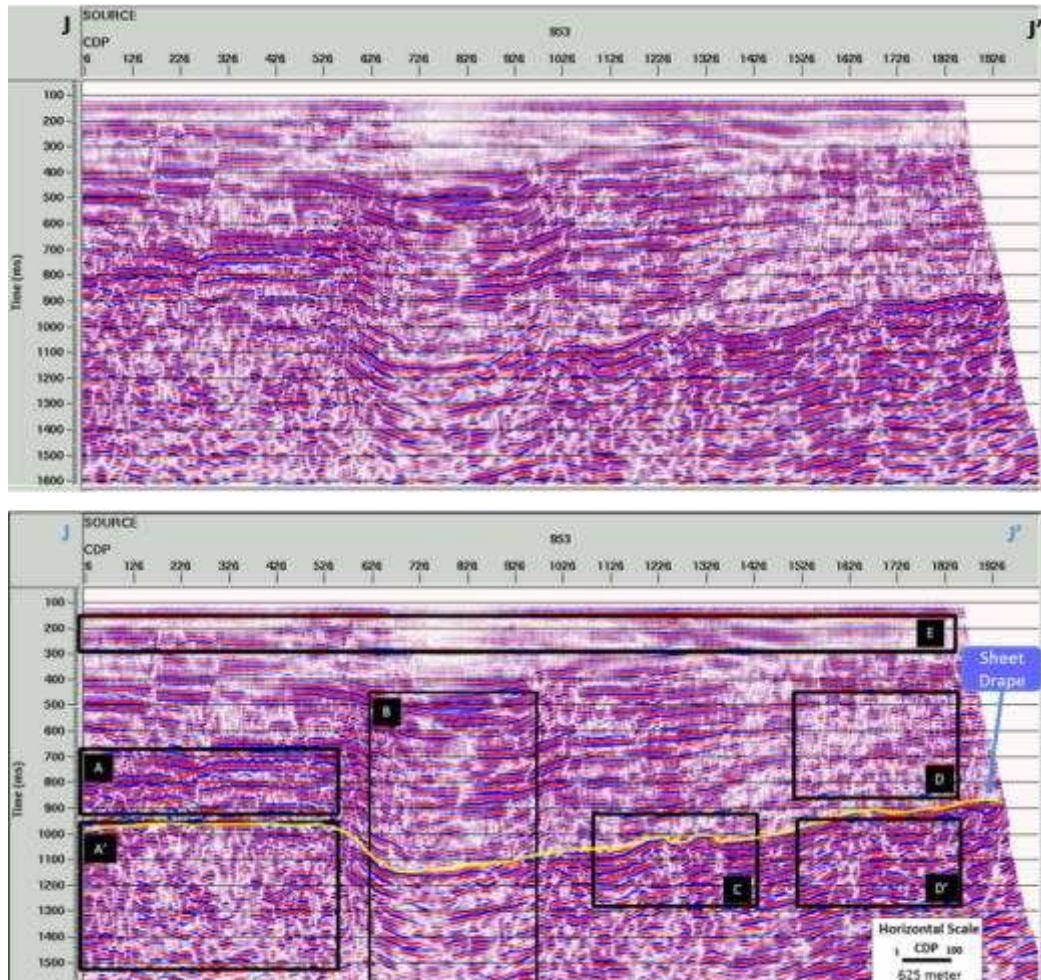


Figure 5. 2D Seismic Reflection of Jaya Line Profile

Depositional environment interpretation that was done to seismic facies unit in Baruna and Jaya profile based on seismic facies parameters, consists of reflection configuration, geometry and structure, literal relation, nature boundary, amplitude, continuity, and frequency. Seismic facies in this study show:

- reflection configuration is dominated by parallel
- sheet drape geometry shows stable condition and fault is rare
- the local mound is carbonate
- concordance and on lap are nature boundary
- high amplitude domination
- continuous reflector
- high frequency and not various

Conclusion

1. Seismic data processing use Kirchhoff Post Stack Time Migration method can be applied for seismic facies analysis.
2. In this study, seismic reflector characteristics that have been found are:
 - a. individual reflector: medium to strong amplitude, low to medium frequency, continuous reflection
 - b. reflection termination: parallel and hummocky
 - c. reflection configuration: on lap (Baruna line)
 - d. external form: sheet drape and local mound (Jaya line)
3. Reflector characterization and seismic facies unit analysis in this study shows shelf as the depositional environment.

Acknowledgment

The authors want to say thanks to Dr. M. Ilyas (Head of Technology Center for Marine Survey, Agency for the Assessment and Application and Technology - BPPT) for supporting in this publication. The data were taken by K.R. Baruna Jaya II in oil and gas exploration program in 2009 between Technology Center for Marine Survey - BPPT, ELNUSA, and PT. Binsar Natorang Energi (BNE).

References

1. Boggs, S.Jr. Principles of Sedimentology and Stratigraphy, 4th Ed. New Jersey: Pearson Prentice Hall; 2009.
2. R. G. Walker and N. P. James (eds). Facies Models. Response to Sea Level Change. 2nd ed. Canada: Geological Association of Canada; 1992.
3. Munadi, S. Pengolahan Data Seismik: Prinsip Dasar dan Metodologi. Depok: Percetakan Universitas Indonesia, Indonesia; 2002.
4. Yilmaz, O. Seismic Data Processing, Society of Exploration Geophysicists, Investigations in Geophysics No. 2. Tulsa, Society of Exploration Geophysicists; 1987.
5. Schneider W.A. Integral Formulation for Migration in Two and Three Dimensions. Geophysics. 1978 Feb; 13(I), 19-76.
6. Bancroft, J. C. A Practical Understanding of Pre- and Poststack Migrations, Volume I. Tulsa: Society of Exploration Geophysicist; 1997.
7. Mitchum, R.M., Vail P.R., and Thompson S. Seismic stratigraphy and global changes in sealevel, Part 2: The depositional sequence as a basic unit for stratigraphic analysis. In: Payton (Ed.), Seismic Stratigraphy: Application to Hydrocarbon Exploration. AAPG-Memoir No. 26, AAPG, Tulsa; 1977. p. 53–62.
8. Badley, M. E. Practical Seismic Interpretation. Englewood Cliffs: Prentice Hall; 1985.
9. Soeka S. and Munadi, S. Prinsip Dasar Rekonstruksi Lingkungan Pengendapan Berdasarkan Fasies Seismik. Depok: Percetakan Universitas Indonesia, Indonesia; 2008.
10. Sangree, J.B and Widmier J.M. Seismic stratigraphy and global changes in sealevel Part 9: seismic interpretation of clastic depositional facies. In: Payton (Ed.), Seismic Stratigraphy: Application to Hydrocarbon Exploration, AAPG-Memoir No. 26, AAPG, Tulsa; 1977. p. 165–184.
11. Vail, P.R., Todd R. G., and Sangree J. B. Seismic Stratigraphy and Global Changes of Sea Level: Part 5. Chronostratigraphic Significance of Seismic Reflections: Section 2. Application of Seismic Reflection Configuration to Stratigraphic Interpretation. AAPG Memoir 26; 1977. p. 99 – 116.
12. Veeken P.C.H. Seismic Stratigraphy and Depositional Facies Model. Amsterdam: Academic Press; 2013.
13. Nicholas G. Sedimentology and Stratigraphy. UK: Wiley-Blackwell; 2009.
14. The Walker School Environmental Science. Geology and The Environment; 31st October 2008 [cited June 20th 2016]. Available from: <http://www.slideshare.net/guest4eac6/geology-and-the-environment-presentation>. Internet.