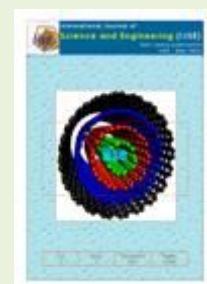




## International Journal of Science and Engineering(IJSE)

Home page: <http://ejournal.undip.ac.id/index.php/ijse>



# Codition of Coral Reef at Teluk Pandan Sub-District East Kutai District

Muhammad Syahrir R<sup>1)\*</sup>, Achmad Jayadi<sup>2)</sup>, Adnan<sup>1)</sup>, Muhammad Yasser MF<sup>1)</sup> and Tedy Hanjoko<sup>1)</sup>

<sup>1)</sup>Fisheries and Marine Science Faculty of Mulawarman University, Kampus Gunung Kelua Samarinda, East Kalimantan 75123

<sup>2)</sup>Marine and Fisheries Office of East Kutai District, JalanSosial, Government Offices Complex of Bukit Pelangi, Sangatta, East Kutai District, East Kalimantan Province, Indonesia

Email: [msr\\_arm@yahoo.com](mailto:msr_arm@yahoo.com)

**Abstract** - Coral reef of TelukPandan Sub-district East Kutai District still low in both monitoring and management, thus also poorly in coral reef database. This research purpose was to obtain the data of coral reef condition and distribution description in this sub-district. Research was held on October 2013 at six observation stations using lifeform line intercept transect survey method. The coral condition estimation was based on live coral cover (LC) and hard coral mortality index (HCM). Coral reef distribution and wide were estimated by satellite image Landsat 7 ETM+ processing and direct field tracking using GPS. There estimated  $\pm 618.63$  ha of coral reef area consist of fringing and patch reef formation type. Live coral cover vary 2.1-67.8% or categorized "poor" to "good" reef condition and in average LC = 38.1% ("fair/moderate" condition). Hard coral mortality (HCM) index ranged 0.14 - 0.8 and in average 0.31.

**Keywords** - Coral; Condition; Distribution; Mortality Index; Teluk Pandan; East Kutai

Submission: October 3, 2014

Corrected : December 1, 2014

Accepted: December 27, 2014

Doi: 10.12777/ijse.8.1.60-64

[How to cite this article: Syahrir, M. R., Jayadi, A., Adnan, A., Yasser, M.F., Hanjoko, T. 2015. Codition of Coral Reef at Teluk Pandan Sub-District East Kutai District, International Journal of Science and Engineering, Vol. 8(1),60-64 . Doi: 10.12777/ijse.8.1.60-64

### I. INTRODUCTION

Coral reef are very diverse, complex marine ecosystems which commonly occur in shallow tropical water (U.S. Coral Reef task Force Working Group on Ecosystem Science and Conservation, 2000) and has important function and role for marine environment and biota life and also for human life. Coral reefs are often characterized as an underwater tropical rain forest with high biodiversity and primary productivity (Hubbell, 1997; Gladfelter, 1985 in Jaap, 2000). These ecosystems are also valuable assets that provide food, jobs, and beautiful seascape that attracts tourists, protection of vulnerable shorelines from storms and wave action, and provide huge revenue to local communities and national economies (Lobel, 2011).

However, coral reefs are fragile and susceptible harm from many sources that differ in effects (U.S. Coral Reef task Force Working Group on Ecosystem Science and Conservation, 2000) and it is becoming increasingly acknowledged that coral reefs are globally threatened, even along related ecosystem is rapidly deteriorating world-wide (Abelson et al., 1999). According to Wilkinson (2008) the world has effectively lost 19% of the original area of coral reefs.

East Kutai District is include to a region of EastKalimantanProvince with the coastal area southern bordered to BontangCity until northern border of Berau District. TelukPandan is one among seven sub-districts in East Kutai District that covering coastal and sea area as part of the administrative region, also as the southernmost sub-district.

Studies of Juliani (2013) and Juliani and Suyatna (2014) indicate that TelukPandanSub-district had the highest demersal fish stock compared to the other six coastal sub-districts. Unfortunately the data of coral reef existence and condition as the buffer of this fish potency is poorly available. Refer to study of Yasser MF (2010) on coral reef of Bontang City, the direct southern border region to the sub-district, indicate that coral reef in Bontang City has suffer degradation as impact of both nature and anthropogenic disturbance. Thus, reef of TelukPandan possibly experience the same impact and degradation since the area still low in coral reef monitoring and management.

Our research on coral reef of TelukPandanSub-district was conducted in order to obtain the description of the condition and distribution. Along the environment change due to the region development both land and water, the database further expect to support the following

researches and the efforts of policy determination and management for the coral reef of TelukPandan Sub-district.

## II. RESEARCH METHOD

Data was collected in waters of Teluk Pandan Sub-district, East Kutai District, East Kalimantan Province, on October 2013. There 6 (six) observation stations surveyed using lifeform line intercept transect method as described in English et al. (1994) in order to obtain the data of coral condition. Fifty meters long measuring tape was placed parallel to the reef edge profile. Each coral colony or benthic organism that crossover by the line were measured by it length of each lifeform category.

Coordinate of observation stations (Figure 1):

1. N 0o 12' 23.9" E 117o 33' 11.0"
2. N 0o 13' 13.7" E 117o 32' 36.0"
3. N 0o 14' 30.2" E 117o 32' 48.4"
4. N 0o 15' 06.9" E 117o 32' 15.6"
5. N 0o 16' 58.4" E 117o 32' 21.9"
6. N 0o 18' 09.5" E 117o 32' 44.0"

Coral percent cover was calculated using formula (Gomez and Yap, 1988; English et al., 1994; Gomez et al., 1994):

Percent cover of hard coral (HC) is total of both coverage of lifeform Acropora and Non-Acropora. Live

coral coverage (LC) is total of hard coral and soft coral coverage (LC = HC + SC).

$$\text{Percent Cover } \alpha = \frac{\text{total length of lifeform } \alpha}{\text{length of transect}} \times 100$$

$\alpha$  = a category of lifeform

The percentage of LC <25% was categorized as "poor/bad" coral coverage condition, LC 25% - <50% categorized as "fair/moderate" condition, LC 50% - <75% categorized as "good" condition, and LC  $\geq$ 75% categorized as "excellent" condition (Jompa and Pet-Soede, 2002; Hill and Wilkinson, 2004).

Hard coral mortality (HCM) index calculated as ratio of standing dead coral to total cover of both live hard coral and dead coral, HCM = dead coral/(hard coral + dead coral) (Gomez et al., 1994; Fox et al., 2001). Coral mortality index values near zero indicates no significant changes for live coral, while the value of 1 shows that there is a change of live to dead coral, and if MI >0.33, the mortality index is considered to be high and the reef is classified as sick (Sadhukhan and Raghunathan, 2011).

Coral reef distribution and wide were estimated based on satellite image Landsat 7 ETM+ 2008 and further processed using software of ER Mapper 5.5. Direct field tracking using global positioning system (GPS) was performed to identify coral and non-coral areas (ER Mapper, 1997; F-G UGM – Bakosurtanal, 2000).

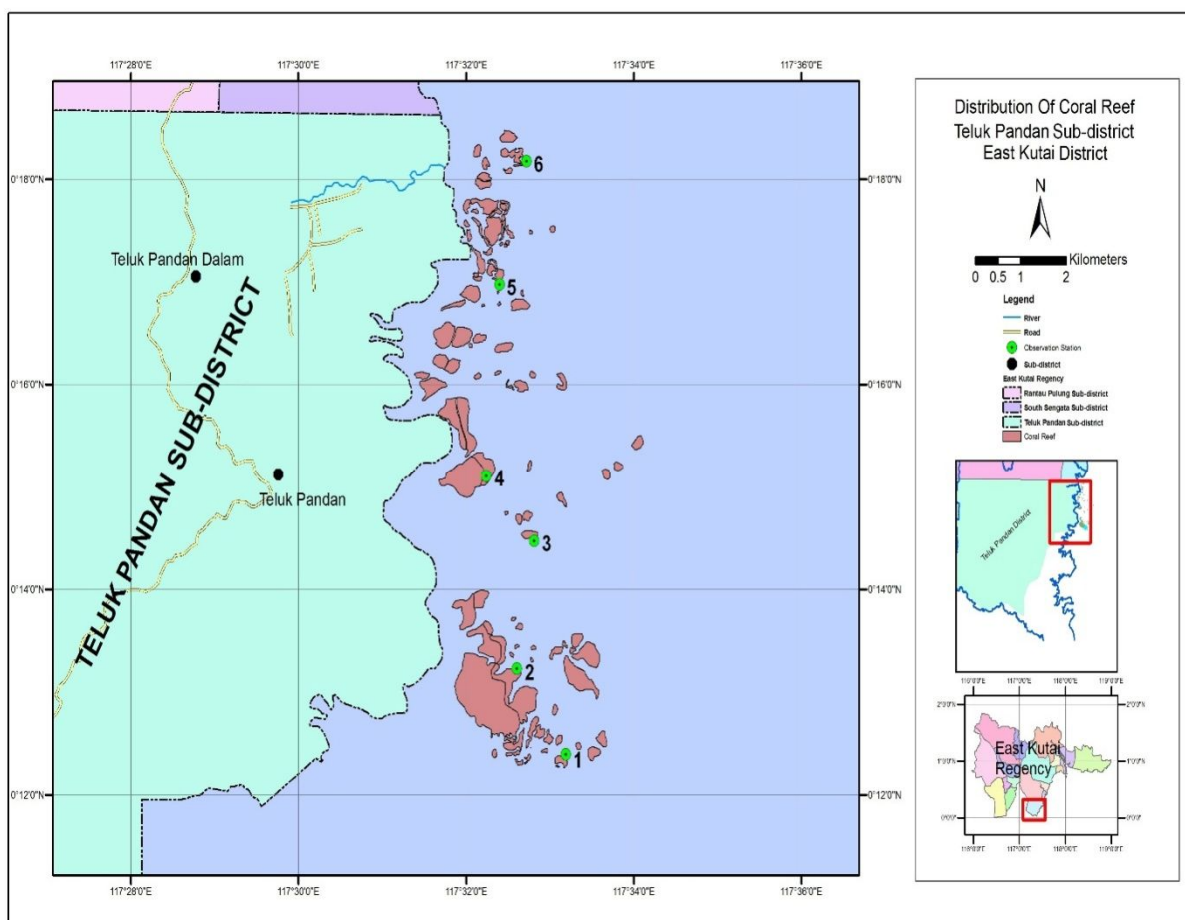


Figure 1. Distribution of Coral Reef, TelukPandan Sub-district, East Kutai District

### III. RESULTS AND DISCUSSIONS

Coral reef in Teluk Pandan Sub-district coastal East Kutai District is a section of continuous reef groups that distributed along the East Kalimantan Province coastal at Marangkayu Sub-district KutaiKartanegara District, Bontang City and southern region of East Kutai District at South Sangatta Sub-district (Marine and Fisheries Office, 2011; Marine and Fisheries Office, 2012). Reef formation type in this coastal mainly was fringing reef that found at near coastline, while small spots of patch reef type observed at farther seaward. Community of seagrass was intensely observed associate overlapping in almost all reef flats both fringing and patch reef, while mangrove community only associate with the back reef near the coastline.

Coral reef in TelukPandanSub-district estimate ± 618.63 ha. Group of reef that closer the coastline tend to form wider groups rather than small scattered groups at farther seaward. The widest group was found at southern part, estimated ± 216 ha (figure 1).

The coral reef tends to develop in scattered colonies at the reef flat commonly dominate by massive lifeform, while dense developing reef found at the reef edge. Coral

found well developed at deep of seawater surface level (or zero meter) until reef upper slope ± 5-7m deep.

The life coral cover (LC) vary from 2.1-67.8% or categorized “poor” to “good” reef condition, while in average LC = 38.1% categorized into “fair/moderate” condition which is contribute by coverage of hard coral (HC) 21.0% and soft coral (SC) 17.1%. Highest LC found at station 3 and the lowest at station 1. However, Figure 2 and Table 1 show that high live coral coverage at station 3 as well at station 5 mostly contribute by abundance of SC by 64.0% and 26.7% while HC contribute only poorly 3.8% and 8.9%. If refer to Done (1997) condition of the principal scleractinian and hydrozoan corals is a critical determiner for the long-term integrity of the reef ecosystems, thus station 2 and 4 possibly considered as reefs with better condition rather than the other stations. Reefs at those two stations respectively has HC of 59.0% and 39.6%, and ‘if the reef condition category estimate by hard coral alone, respectively it categorized to “good” and “fair/moderate” condition, while the other four stations including the average of whole stations has HC < 25% or categorized into “poor” condition.

Table 1. Percent Cover of Lifeform at Each Observed Station and in Average of Teluk Pandan District, East Kutai Regency

Station	Categories/Lifeform	1	2	3	4	5	6	Av.
DEAD CORAL	DC	-	0.2	-	-	1.1	1.3	0.43
	DCA	4.5	9.1	9.3	6.2	14.0	10.7	8.97
ACROPORA	ACB	-	41.7	2.6	6.5	-	1.3	8.68
	ACT	-	-	-	4.3	-	-	0.72
	ACE	-	0.8	-	0.2	-	-	0.17
	ACS	-	2.2	-	1.5	0.4	0.2	0.72
	ACD	-	-	-	1.3	-	-	0.22
NON ACROPORA	CB	-	2.6	-	4.2	-	-	1.13
	CE	0.4	-	-	8.1	-	-	1.42
	CF	-	2.9	-	2.5	-	-	0.90
	CM	0.1	2.0	1.2	5.7	6.6	8.9	4.08
	CS	0.1	1.7	-	3.4	1.6	0.3	1.18
	CMR	-	1.5	-	1.3	0.3	1.0	0.68
	CME	-	3.6	-	0.6	-	2.5	1.12
CHL	-	-	-	-	-	-	-	
OTHER FAUNA	SC	1.5	2.3	64.0	5.9	26.7	2.2	17.10
	SP	2.5	0.9	-	-	0.3	-	0.62
	AA	-	1.0	-	2.3	2.0	2.8	1.35
	CA	-	4.2	-	0.4	-	-	0.77
	HA	-	2.4	0.6	11.5	4.7	3.1	3.72
	MA	-	0.3	-	-	-	1.1	0.23
	TA	-	0.4	-	-	-	-	0.07
	ZO	-	-	-	-	-	-	-
OT	0.1	0.3	-	0.5	1.7	1.0	0.60	
ABIOTIC	S	1.5	4.5	7.2	6.9	11.5	1.1	5.45
	R	85.0	15.0	10.7	25.4	29.1	62.5	37.95
	RCK	4.3	-	-	0.6	-	-	0.82
	SI	-	0.4	4.4	0.7	-	-	0.92
	WA	-	-	-	-	-	-	-

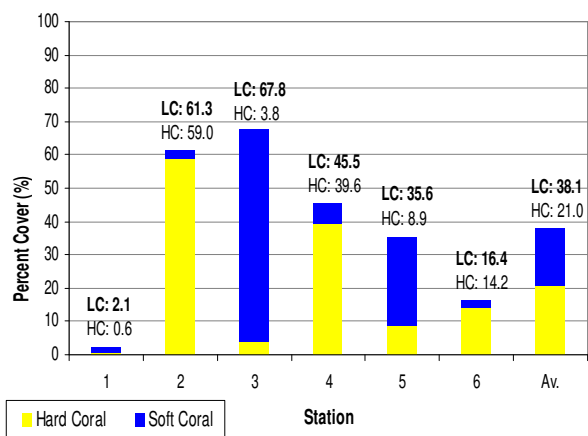


Figure2. Percent Cover of Live Coral (LC) and the Proportion of Hard Coral and Soft Coral of Each Observation Station and in Average, TelukPandan Sub-district, East Kutai District

In general, despite soft coral coverage is dominant in live coral but the overall vastest coverage was contribute by abiotic category of rubble (R) about 38% as shown in Table 1. This rubble form very common observed at the reef flat part at almost entire studied area, except station 2 and 3. Reef at station 2 dominated by hard coral cover particularly at reef crest by acropora branching (ACB) and station 3 dominated by soft coral (SC) cover. Reef crest often space monopolized by fast-growing scleractinians of branching coral (Tomascik *et al.*, 1997).

Domination of soft coral toward poorly cover of hard coral occur at station 3 and 5, while dead coral with algae and rubble are non-live coral that in other hand also commonly cover this reefs area. The domination of soft coral on indicated 'long dead' coral in this reefs estimate related to characteristic of octocorals recruit and grow at a relatively rapid rate thus faster recover to pre-disturbance population, while stony coral recruit and grow in very slow rate even under optimal conditions and their recovery may require several decades to a century (Jaap, 2000).

Northern part reefs relatively suffer higher damage than reefs at southern part, and outer reefs in form of small patch reefs tend suffer higher damage than reef at near shore. Hard coral mortality index vary from 0.14 – 0.88, the average HCM of 0.31 indicate healthy reef without significant change of live coral. Low mortality value of station 2 and 4 with similar HCM of 0.14 indicate healthy reefs, while high mortality at station 1, 3, 5 and 6 with HCM respectively 0.88, 0.71, 0.63 and 0.46 classified as sick reef condition (HCM > 0.33).

The worst reef condition of TelukPandanSub-district was found at station 1, as representing the most outer patch reef. Figure 3 show that the highest HCM value (0.88) was obtained from this station with vast rubble cover (R= 85%) observed all along the scuba dive. There obviously visualized during the observation that the severe damage on this coral reef station mostly caused by destructive fishing practice of blast fishing. Unfortunately, this kind of destruction been observed as well at the whole reefs area in TelukPandan Sub-district particularly toward the small.

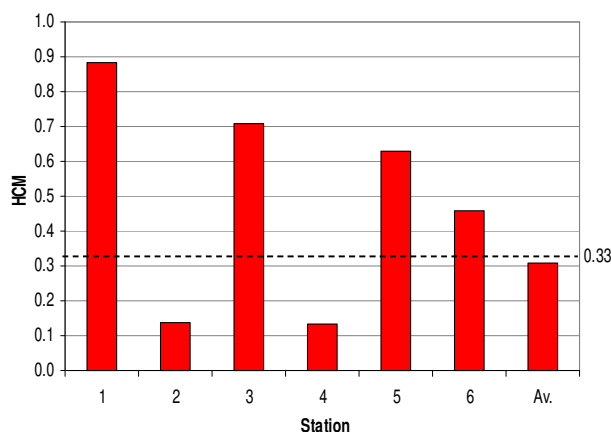


Figure3. Hard Coral Mortality Index (HCM) Each Observation Station and in Average, TelukPandan Sub-district, East Kutai District

### CONCLUSIONS

Coral reef of TelukPandan Sub-district estimate ± 618.63 ha consist of fringing and patch reef formation type. Live coral cover vary 2.1-67.8% or categorized "poor" to "good" reef condition and in average LC = 38.1% ("fair/moderate" condition). Hard coral mortality (HCM) index ranged 0.14 – 0.8 and in average 0.31.

### ACKNOWLEDGMENT

The author would like to thank to Marine and Fisheries Office of East Kutai Dist for their valuable support in providing information and data needed in this article.

### REFERENCES

- [1] Abelson, A., B. Shteinman., M. Fine., and S. Kaganovsky. 1999. Mass Transport from Pollution Sources to Remote Coral Reefs in Eilat (Gulf of Aqaba, Red Sea). *Marine Pollution Bulletin*, Vol. 38, No 1, pp. 25-29
- [2] Done, T. 1997. Four Performance Indicators for Integrated Reef Resources Management. *Workshop on Intergrated Reef Resources Manganement in the Maldives 1997:237-251.*
- [3] English, S., C. Wilkinson., and V. Baker. 1994. *Survey Manual For Tropical Marine Resources.* Australian Institute of Marine Science. Townsville, Australia.
- [4] ER Mapper. 1997. *ER Mapper 5.5 Level One Training Workbook.* Western Australia. Earth Resource Mapping.
- [5] F-G UGM - Bakosurtanal. 2000. *Standardize on Control Methodology Spec of Basic Thematic Mapping Quality to Support the Zonation Plan.* Yogyakarta. (inbahasa)
- [6] Fox, H. E., R. Dahuri., A. H. Muljadi., P. J. Mous., and J. S. Pet. 2001. Increased Coral Cover in Komodo National Park, Indonesia: Monitoring for Management Relevance. *Indonesian Journal of Coastal and Marine Resources* 3: 27-35
- [7] Gomez, E. D., and H. T. Yap. 1988. *Monitoring Reef Condition.* In: Kenchington, R. A., and B. E. T. Hudson. (Eds.), *Coral Reef Management Handbook.* UNESCO Regional Office for Science and Technology for Southeast Asia (ROSTSEA). Jakarta.
- [8] Gomez, E. D., P. M. Alino., H. T. Yap., and W. Y. Licuanan. 1994. A Review of the Status of Philippine Reefs. *Marine Pollution Bulletin* 29:62-68
- [9] Hill, J., and C. Wilkinson. 2004. *Methods for Ecological Monitoring of Coral Reefs, Version 1; A Resource for Managers.* Australian Institute of Marine Science. Australia.
- [10] Hubbell, S. P. 1997. A Unified Theory of Biogeography and Relative Species Abundance and its Application to Tropical Rain Forests and Coral Reefs. *Proc. 7th Int. Coral Reef Symp.* I, 33–42
- [11] Jaap, W. C. 2000. *Coral Reef Restoration.* *Ecological Engineering* 15: 345–364
- [12] Jompa, H., and L. Pet-Soede. 2002. *The Coastal Fishery in East Kalimantan: A Rapid Assessment of Fishing Patterns, Status of*

- Reef Habitat and Reef Fish Stocks and Socio-economic Characteristics. WWF Indonesia – Wallacea Program Report.
- [13] Juliani and I. Suyatna. 2014. The Stock Potency of Demersal Fish Resource at the Coastal Zone, East Kutai Sub-district in East Kalimantan. *International Journal of Science and Engineering*, 6(2):135-143
- [14] Juliani. 2013. The Potency Estimations of Fish Resources at Teluk Pandan, South Sangatta, North Sangatta and Bengalon Sub-districts Waters East Kutai District. *Journal of Tropical Fisheries Science* Vol. 18. No. 2: 56-67. (in bahasa)
- [15] Lobel, P. 2011. Technical Note: Coral Reef Initiative Database; Natural Resources Conservation. Department of Defense, Legacy Resource Management Program. Washington, D.C.
- [16] Marine and Fisheries Office. 2011. Identification of Coral Reef Distribution at Marangkayu and Samboja Sub-district Kutai Kartanegara District; Final Report. Marine and Fisheries Office of Kutai Kartanegara District. East Kalimantan province. (in bahasa)
- [17] Marine and Fisheries Office. 2012. Utilization Study on Coastal Area and Small Islands Refer to Agroecosystem Condition; Final Report. Marine and Fisheries Office of East Kutai District. East Kalimantan Province. (in bahasa)
- [18] Sadhukhan, K., and C. Raghunathan. 2011. Diversity and Abundance of Scleractinia Corals in Car Nicobar Island, India. *International Journal of Plant, Animal and Environmental Sciences*. Vol. 1, Issue: 3 Sept-Nov 2011: 150-157.
- [19] Tomascik, T., A. J. Mah., A. Nontji, and M. K. Moosa. 1997. *The Ecology of Indonesian Seas; The Ecology of Indonesian Seas*. Periplus Editions (HK) Ltd. Republic of Singapore.
- [20] U.S. Coral Reef Task Force Working Group on Ecosystem Science and Conservation. 2000. *Coral Reef Protected Areas: A Guide for Management*. U.S. Coral Reef Task Force, Department of the Interior, Washington, D.C.
- [21] Wilkinson, C. 2008. *Status of Coral Reefs of the World: 2008*. Global Coral Reef Monitoring Network and Reef and Rainforest Research Centre. Townsville, Australia.
- [22] Yasser MF, M. 2010. Description of Coral Reef Degradation Level in Bontang Waters East Kalimantan Province. *Journal of Tropical Fisheries Science*, Vol. 12. No. 2: 17-25 (in bahasa).